



**Blue Mountains Bush Fire Management Committee**  
***Hazard Reduction Notification***

Please be advised that on behalf of the Blue Mountains Bush Fire Management Committee (BMBFMC) crews from the NSW Rural Fire Service (RFS) and Fire & Rescue NSW (FRNSW) are intending to undertake Hazard Reduction (HR) burning, weather permitting, at the following location this week:

Date: Saturday 29<sup>th</sup> July 2017 & Sunday 30<sup>th</sup> July 2017  
Name of HR: Weemala West  
Location: Weemala Avenue Linden  
Size: 66.6 hectares  
Lead Agency: RFS

Date: Saturday 29<sup>th</sup> July 2017 & Sunday 30<sup>th</sup> July 2017  
Name of HR: Steiner School  
Location: between Clear View Pde & Mount View Ave Hazelbrook  
Size: 5.77 hectares  
Lead Agency: RFS

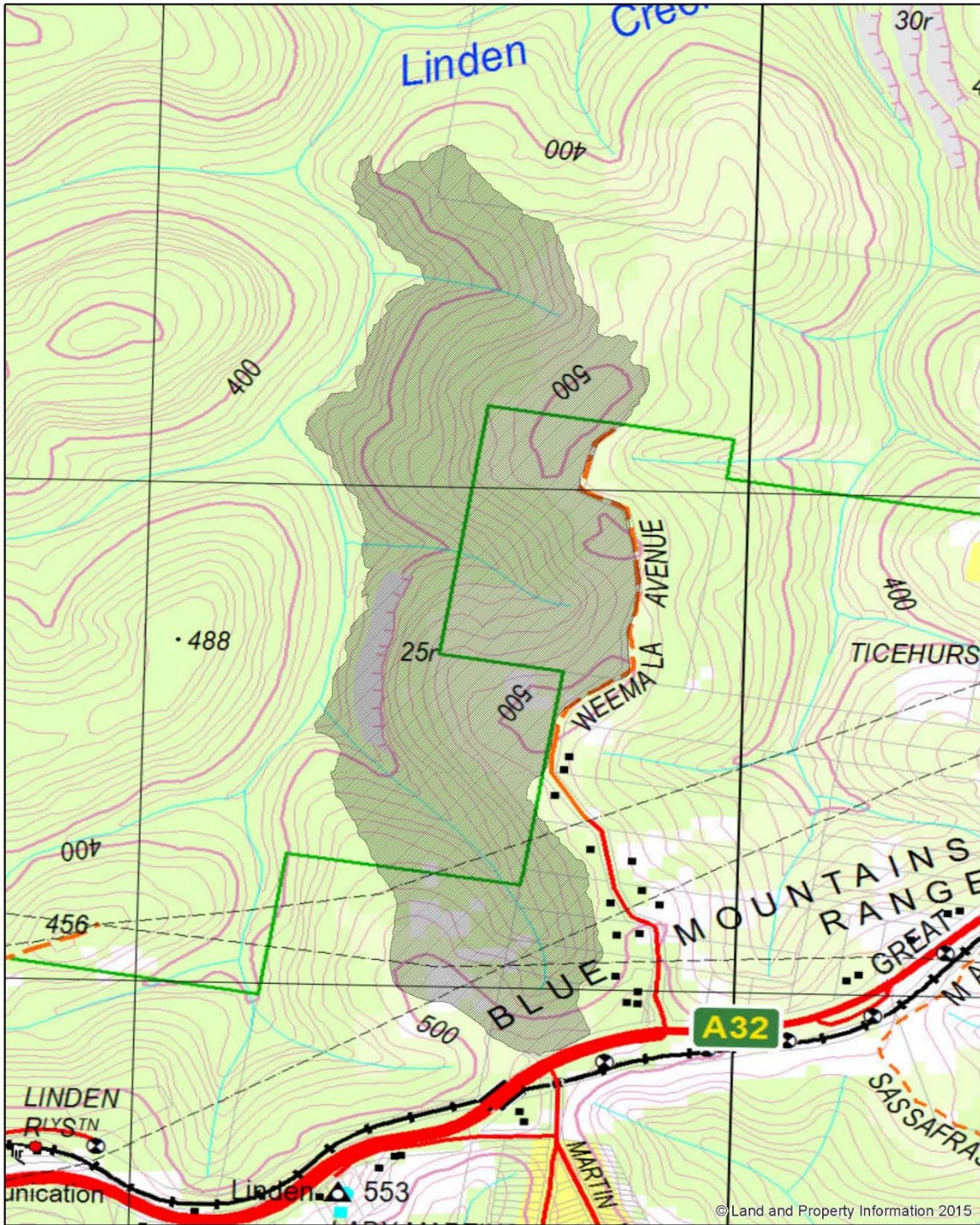
Further information regarding these activities can be found at <http://www.rfs.nsw.gov.au/hr>

or by contacting the relevant lead agency

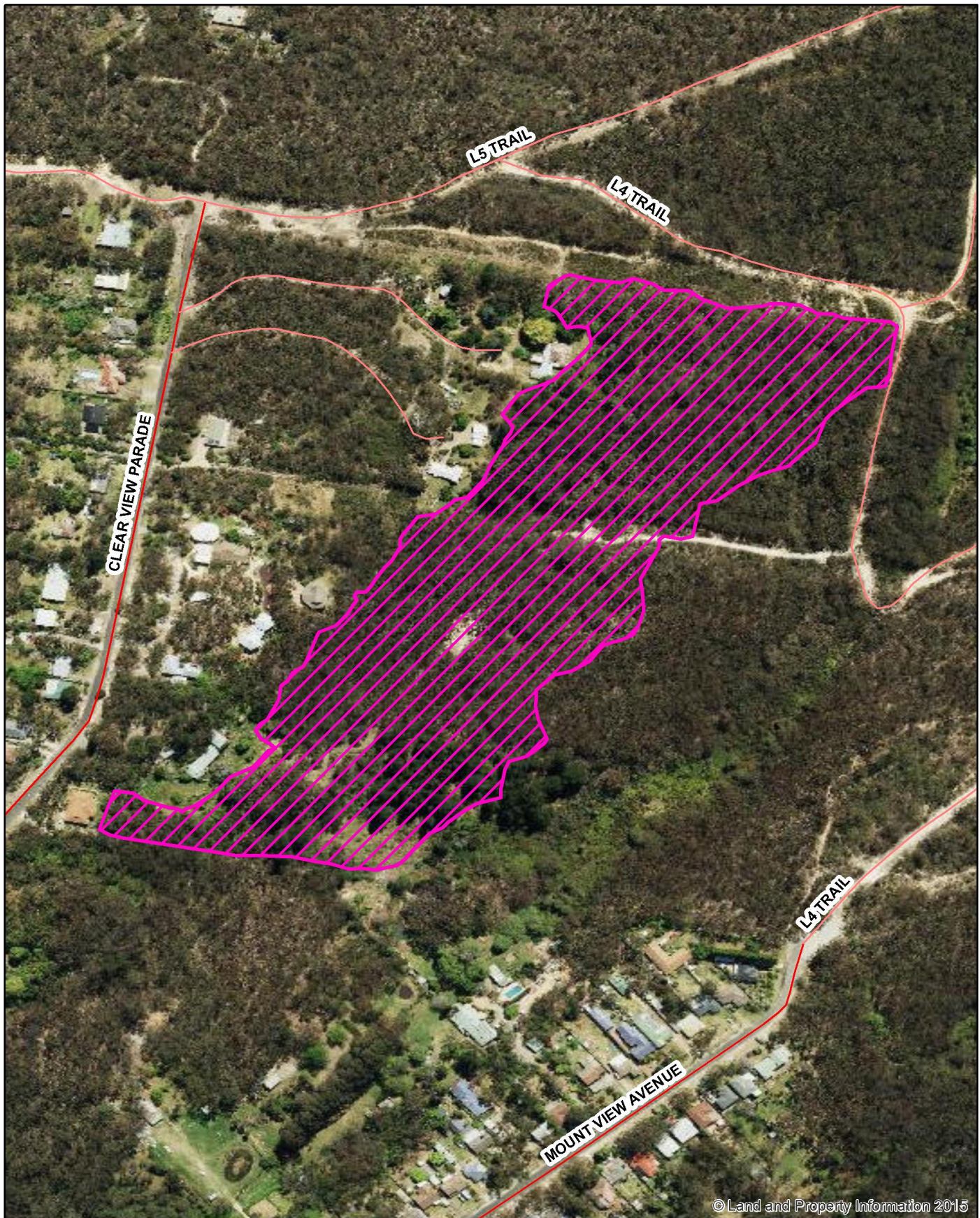
NSW Rural Fire Service  
Blue Mountains District - 4784 7444  
[bluemountains@rfs.nsw.gov.au](mailto:bluemountains@rfs.nsw.gov.au)



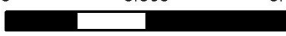
Regards,

David Jones  
**Executive Officer**  
On behalf of the Blue Mountains Bushfire Management Committee



**Weemala Avenue, Linden Hazard Reduction**



	MAP DESCRIPTION	LEGEND	WARNING INFORMATION	KEY MAP
 <p><b>BLUE MOUNTAINS</b></p>	Steiner School HR		<ol style="list-style-type: none"> <li>This map has been prepared by a NSW Government Agency (the Agency) using data supplied to it by other agencies and entities.</li> <li>The Agency has not verified or checked the data used to prepare this map. The map may contain errors and omissions. The Agency has not made any attempt to ground truth the map.</li> <li>There will be a margin of error in relation to the location of features recorded on the map. The Agency is unable to specify the extent or magnitude of that margin of error.</li> <li>Significant changes may have occurred:               <ol style="list-style-type: none"> <li>in the time between which the data was originally collected and the map produced; and</li> <li>since the map was produced.</li> </ol> </li> <li>Users must, wherever possible, ground truth the map before relying on it or the accuracy of the map or the information recorded on this map for any purpose.</li> <li>The Agency accepts no responsibility for any injury loss or damage arising from the use of this map or any errors or omissions in the information recorded on the map.</li> </ol>	
	<p><b>PRODUCTION INFORMATION</b></p> <p><b>Map Details:</b>            Base Data: © LPI, SPOT, AAM, SKM, OEH, Sensis, Kattron            Map Projection: GCS GDA 1994            Print Date / Time: 25/10/2016 10:39:01 AM            Produced by: John Norris</p> 		<p><b>SCALE</b></p> <p>Scale: 1 : 3,500</p> <p>0      0.065      0.13</p>  <p>Km</p>	