

Bush Fire Preparation Map



Creewah

WORKS PROGRAM

Map Ref No.	Strategy	Action	Responsible Agency	Target / Action Date (Year)
1	Hazard Reduction	Maintain Fire Trails	Forest NSW, Private	on going
2	Hazard Reduction	Monitor and Maintain Strategic Fire Advantage Zone(SFAZ) as required	Private, Forest NSW	on going
3	Hazard Reduction	Monitor and Maintain Asset Protection Zone (APZ)	Private	on going
4	Preparedness	Preparation of Bush Fire Survival Plans	Private	on going
5	Hazard Reduction	Maintain Crown Road Reserves around NSP	Dep Primary Industries-Lands	on going
6	Hazard Reduction	Maintain Council Road Reserves around NSP	Council	on going
7	Hazard Reduction	Maintain resident preparation zone to APZ standard where possible	Private	on going
8	Hazard Reduction	Monitor NSP APZ	RFS	annually



Zone	Purpose	Suppression Objectives	Zone Characteristics
Asset Protection Zone	To protect human life, property and highly valued public assets and values.	To enable the safe use of Direct Attack suppression strategies within the zone. To minimise bush fire impacts on undefendable assets.	As per RFS document Standards for Asset Protection Zones.
Strategic Fire Advantage Zone	To provide strategic areas of fire protection advantage which will reduce the speed and intensity of bush fires, and reduce the potential for spot fire development. To aid containment of wildfires to existing management boundaries.	To improve the likelihood and safe use of Parallel/Attack suppression strategies within the zone. Indirect Attack (back burning) in high to very high fire weather conditions within the zone. To reduce the likelihood of Crown fire development within the zone, and/or Spot fire ignition potential from the zone.	Zone width related to suppression objectives and dependant upon: •Topography •Aspect •Spotting propensity •Location of adjacent firebreaks •Mosaic pattern of treatment •Assess Overall Fuel Hazard (OFH) once vegetation communities reach minimum fire thresholds within this plan. Management practices should aim to achieve mosaic fuel reduction patterns so that the majority of the SFAZ has an OFH of less than high.
Resident Preparation Zone	To identify that residents / property owners have a vital role to play in bush fire risk management and that they are responsible for their own property preparedness.	To increase the preparedness of residents for bush fire and ensure that vegetation in close proximity to residential assets are adequately maintained. To provide a defensible space for residents / fire fighters and complement hazard reduction works carried out within Asset Protection Zones / Strategic Fire Advantage Zones.	Residents / property owners should strive to achieve a 'Fire-Safe' property as outlined in the illustration above. Concerns regarding the bush fire safety of neighbouring properties should be raised with the NSW Rural Fire Service.

LEGEND

- Proposed Asset Protection Zone
- Proposed Strategic Fire Advantage Zone
- Asset Protection Zone
- Strategic Fire Advantage Zone
- Proposed Hazard Reduction
- Residential Preparation Zone
- Proposed Fire Trail
- Fire Trail
- Neighbourhood Safer Place

PREPARE. ACT. SURVIVE.

BUSH FIRE INFORMATION LINE
1800 NSW RFS
 1 8 0 0 6 7 9 7 3 7
www.rfs.nsw.gov.au

000 EMERGENCY

BUSH FIRE PREVENTION COMMITTEE

PRODUCTION INFORMATION

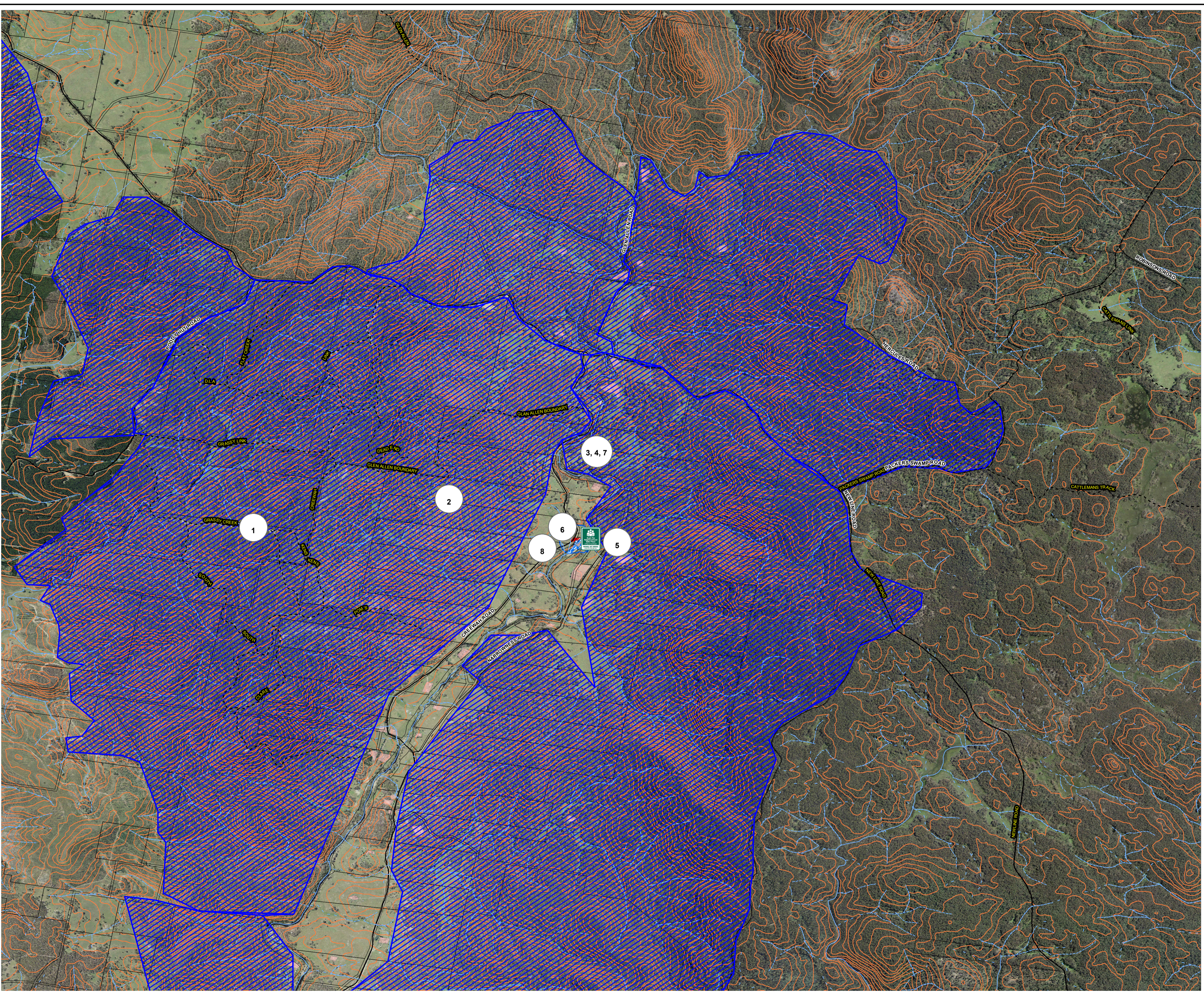
Base Data: LPMA Cadastre and Topo Database
 Map Projection: GCS GDA 1994

Print Date / Time: 19/11/2015
 Produced by: CSC south

BFMC Approved: 24/09/2015

WARNING INFORMATION

- This map has been prepared by the NSW Rural Fire Service ("The Service") using data supplied to it by other agencies and entities. See the 'Data Dictionary' for further information about the sources of this data.
- The Service has not verified or checked the data used to prepare this map. The map may contain errors and omissions. The Service has not made any attempt to ground truth the map.
- There will be a margin of error in relation to the location of features recorded on the map. The Service is unable to specify the extent or magnitude of that margin of error.
- Significant changes may have occurred:
 - In the time between which the data was originally collected and the map produced; and
 - Since the map was produced.
- Users must, wherever possible, ground truth the map before relying on it or the accuracy of the map or the information recorded on the map for any purpose.
- The Service accepts no responsibility for any injury loss or damage arising from the use of this map or any errors or omissions in the information recorded on the map.



**FIRE HAS A PLAN
DO YOU?**

**Get prepared for the Bush Fire Season and make your Bush Fire Survival Plan Now.
Go to www.myfireplan.com.au and discuss with your family what to do if a fire starts near you.**