

**Hunters Hill Lane Cove Parramatta Ryde  
Bush Fire Management Committee**

**Bush Fire Risk Management Plan  
2019-2024**



## Table of Contents

<i>Glossary</i> .....	6
<b>Chapter 1. Introduction</b> .....	<b>7</b>
1.1 Background.....	7
1.2 Aim and Objectives .....	7
1.3 Description of the Hunters Hill Lane Cove Parramatta Ryde BFMC Area.....	8
1.3.1 Location and land tenure .....	8
1.3.2 Climate and bush fire season.....	8
1.3.3 Population and demographic information.....	8
1.3.4 History of bush fire frequency and ignition cause .....	8
<b>Chapter 2. Identifying and Assessing the Bush Fire Risk</b> .....	<b>9</b>
2.1 Process .....	9
2.2 Communication and Consultation.....	9
2.3 Identifying the Bush Fire Risk .....	10
2.3.1 Assets .....	10
2.3.2 Assessing the Bush Fire Risk - Consequence .....	11
2.3.3 Assessing the Bush Fire Risk - Likelihood .....	12
2.3.4 Identifying the level of risk .....	12
2.3.5 Evaluating the Bush Fire Risk.....	12
2.3.6 Prioritising Treatments .....	12
2.3.7 Risk Acceptability .....	13
<b>Chapter 3. Treating the Risk</b> .....	<b>14</b>
3.1 Bush Fire Management Zones .....	14
3.2 BFMC Wide Treatments .....	15
3.3 Asset Specific Treatments .....	16
3.4 Fire Thresholds.....	17
3.5 Annual Works Programs .....	18
3.6 Implementation .....	18
<b>Chapter 4. Performance Monitoring and Reviewing</b> .....	<b>19</b>
4.1 Review.....	19
4.2 Monitoring .....	19
4.3 Reporting .....	19
4.4 Performance Measurements .....	19
<b>Appendix 1 Community Participation Strategy</b> .....	<b>21</b>
<b>Appendix 3 Treatment Register</b> .....	<b>25</b>
<b>Appendix 4 Map Display Areas</b> .....	<b>28</b>


**List of Tables**

Table 1-1 Land Tenure	8
Table 2-1 Risk acceptability and mitigation	13
Table 3-1 Bush Fire Management Zones	14
Table 3-2 Asset specific treatments used in the Hunters Hill Lane Cove Parramatta Ryde BFMC area	17
Table 3-3 Fire Thresholds for Vegetation Categories	18

**List of Figures**

Figure 2-1 Overview of the risk assessment process	9
--	---

**Hunters Hill Lane Cove Parramatta  
Ryde Bush Fire Management  
Committee Member Agencies**



Fire & Rescue NSW  
Hunters Hill Council

National Parks and Wildlife Service- NPWS (In maps as OEH)  
Lane Cove Council  
City of Parramatta Council  
Ausgrid

Council of the City of Ryde  
NSW Police Force

Department of Trade and Investment – Crown Lands M2  
Motorway

Nature Conservation Council – NSW  
Sydney Olympic Park Authority

## Authorisation

In accordance with Part 3 Division 4 of the Rural Fires Act 1997, this Plan has been prepared by the Hunters Hill Lane Cove Parramatta Ryde Bush Fire Management Committee and has been endorsed at the BFMC meeting on 30<sup>th</sup> June 2020 for submission to the Bush Fire Coordinating Committee.

### Recommended

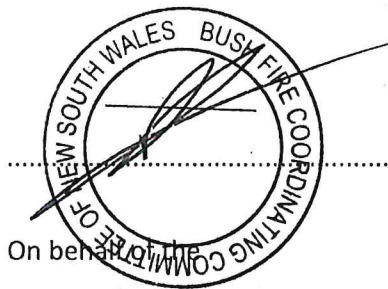


Cr. Pam Palmer

16 February 2021

Chairperson  
Hunters Hill Lane Cove Parramatta Ryde  
Bush Fire Management Committee

### Approved



On behalf of  
NSW Bush Fire Coordinating Committee

6, 10, 21



## Amendment List

Amendment		Entered	
Number	Date	Signature	Date

## Glossary

**Assets:** anything valued by the community which includes houses, crops, heritage buildings and places, infrastructure, the environment, businesses, and forests, that may be at risk from bush fire.

**Bush Fire:** a general term used to describe fire in vegetation, includes grass fire.

**Bush Fire Hazard:** the potential severity of a bush fire, which is determined by fuel load, fuel arrangement and topography under a given climatic condition.

**Bush Fire Risk:** the chance of a bush fire igniting, spreading and causing damage to the community or the assets they value.

**Bush Fire Risk Management:** a systematic process that provides a range of treatments which contribute to the wellbeing of communities and the environment, which suffer the adverse effects of wildfire/bush fire.

**Bush Fire Threat:** potential bush fire exposure of an asset due to the proximity and type of a hazard and the slope on which the hazard is situated.

**Consequence:** outcome or impact of a bush fire event.

**Fire Fighting Authorities:** the NSW Rural Fire Service, NSW Fire Brigades, the National Parks and Wildlife Service and Forests NSW.

**Likelihood:** the chance of a bush fire igniting and spreading.

**Major Bush Fire:** A bush fire which requires the attendance of multiple brigades or causes damage to property or injury to one or more persons.

**Display area:** geographic area determined by the Bush Fire Management Committee which is used to provide a suitable area and scale for community participation and mapping display purposes.

**Recovery costs:** the capacity of an asset to recover from the impacts of a bush fire.

**Risk Acceptance:** an informed decision to accept the consequences and the likelihood of a particular risk.

**Risk Analysis:** a systematic process to understand the nature of and to deduce the level of risk.

**Risk Assessment:** the overall process of risk identification, risk analysis and risk evaluation.

**Risk Identification:** the process of determining what, where, when, why, and how something could happen.

**Risk Treatment:** the process of selection and implementation of measures to modify risk.

**Vulnerability:** the susceptibility of an asset to the impacts of bush fire.

# Chapter 1. Introduction

## 1.1 Background

Under the *Rural Fires Act 1997* the Bush Fire Coordinating Committee (BFCC) must constitute a Bush Fire Management Committee (BFMC) for each area in the State, which is subject to the risk of bush fires. Each BFMC is required to prepare and submit to the BFCC a draft Bush Fire Risk Management Plan (BFRMP).

A BFRMP is a strategic document that identifies community assets at risk and sets out a five-year program of coordinated multi-agency treatments to reduce the risk of bush fire to the assets. Treatments may include such things as hazard reduction burning, grazing, community education, fire trail maintenance and establishing community fireguard groups.

Annual programs to implement the treatments identified in this plan will be undertaken by the relevant land managers and fire fighting authorities.

In exercising its functions under the *Rural Fires Act 1997*, including the preparation of a draft bush fire risk management plan, the Hunters Hill Lane Cove Parramatta Ryde BFMC is required to have regard to the principles of ecologically sustainable development (ESD).

This document and the accompanying maps together form the BFRMP for the Hunters Hill Lane Cove Parramatta Ryde BFMC area.

This BFRMP has been prepared by the Hunters Hill Lane Cove Parramatta Ryde BFMC and covers both public and private lands. This BFRMP must be reviewed and updated within each successive five-year period from the constitution of the BFMC.

The BFCC recognises that climate change has the potential to increase bush fire risk. The risk assessment process applied in this BFRMP is based on current climatic conditions. The BFCC will monitor information on climate change and will modify the process when necessary.

## 1.2 Aim and Objectives

The **aim** of this BFRMP is to minimise the risk of adverse impact of bush fires on life, property and the environment.

The **objectives** of this BFRMP are to:

- reduce the number of human-induced bush fire ignitions that cause damage to life, property and the environment;
- manage fuel to reduce the rate of spread and intensity of bush fires, while minimising environmental/ecological impacts;
- reduce the community's vulnerability to bush fires by improving its preparedness; and
- effectively contain fires with a potential to cause damage to life, property and the environment.

## **1.3 Description of the Hunters Hill Lane Cove Parramatta Ryde BFMC Area**

### **1.3.1 Location and land tenure**

The Hunters Hill Lane Cove Parramatta Ryde *BFMC* area occupies the North Western shore of Sydney Harbour and extends along the northern side of the Parramatta River up to the M2 Motorway.

The area covered by the Hunters Hill Lane Cove Parramatta Ryde BFMC is 14,036 hectares and includes the land tenures outlined in Table 1.

<b>Land Manager</b>	<b>% of BFMC area</b>
National Parks & Wildlife Service (NPWS)	1%
Forestry Corporation of NSW	N/A
Trade and Investment – Crown Lands	5%
Local Government	14%
Private	80%
Other	N/A

Table 1-1 Land Tenure

### **1.3.2 Climate and bush fire season**

The typical / average climate in the Hunters Hill Lane Cove Parramatta Ryde BFMC area is for uniform rainfall throughout the year, although higher rainfall can be experienced in the months of February to March. The Bush Fire season generally runs from October to March, in which high daytime temperatures are expected.

Prevailing weather conditions associated with the Bush Fire season in the Hunters Hill Lane Cove Parramatta Ryde BFMC area are strong North West winds, low humidity and high temperatures. These conditions combined with predominantly dry sclerophyll vegetation dramatically influence the behaviour of Bush Fires in the area. Although Bush Fires may occur at any time of the year, the highest probability of Bush Fires occurs in December and January.

### **1.3.3 Population and demographic information**

The population of the Hunters Hill Lane Cove Parramatta Ryde BFMC area is approximately 387,958 people. The major population centres are Hunters Hill, Parramatta, Harris Park Ryde, Epping, Carlingford and Lane Cove.

### **1.3.4 History of bush fire frequency and ignition cause**

The Hunters Hill Lane Cove Parramatta Ryde BFMC area has on average 8 Bush Fires per year, of which none can be considered a major fire.

The main sources of ignition in the Hunters Hill Lane Cove Parramatta Ryde BFMC areas are deliberate ignitions, campfires, fire by misadventure & lightning strikes.



## Chapter 2. Identifying and Assessing the Bush Fire Risk

### 2.1 Process

The Australia/New Zealand Standard ISO 31000:2009 Risk Management - Principles and guidelines was used as the basis for the risk assessment process. See Figure 2.1 for the steps involved. For a detailed description of the process undertaken see the Bush Fire Risk Management Planning Guidelines for Bush Fire Management Committees on the RFS website: [www.rfs.nsw.gov.au](http://www.rfs.nsw.gov.au).

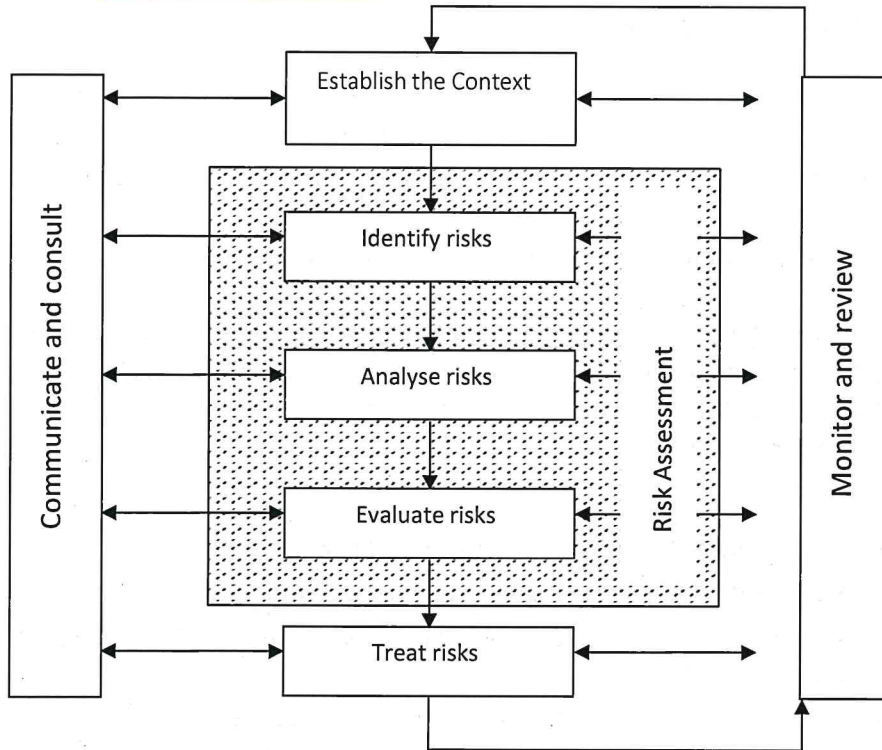


Figure 2-1 Overview of the risk assessment process

### 2.2 Communication and Consultation

Community participation is an integral part of risk management. The Community Participation Strategy involved developing and implementing a process to address the needs, issues and concerns of stakeholders within the BFMC area in regard to the BFRMP.

See Appendix 1 for the Community Participation Strategy used by the Hunters Hill Lane Cove Parramatta Ryde BFMC in preparing this BFRMP.



## **2.3 Identifying the Bush Fire Risk**

Identifying the level of bush fire risk firstly involved identifying important community assets considered to be at risk from bush fire in the Hunters Hill Lane Cove Parramatta Ryde BFMC area, and then assessing the likelihood and consequence ratings.

### **2.3.1 Assets**

BFMC members and the community, identified assets within the Hunters Hill Lane Cove Parramatta Ryde BFMC that they believed were at risk of bush fire.

The assets were divided into four asset types:

#### **Human settlement**

- Residential areas including urban bushland interface areas and rural properties;
- Special Fire Protection areas including schools, hospitals, nursing homes, and tourist facilities; and
- Other human settlement areas including commercial and industrial areas where distinct from major towns.
- Neighbourhood Safer Place (NSP) is defined by the *Rural Fires Act 1997* as *land or a building designated as a neighbourhood safer place under section 62C*. NSPs provide a place of last resort for people during a bush fire. All designated NSP locations for NSW are available at [www.rfs.nsw.gov.au](http://www.rfs.nsw.gov.au).

#### **Economic**

- Agricultural; e.g. major silos, regional saleyards, cropping/grazing land;
- Commercial/industrial e.g. major industries, waste treatment plants, sawmills;
- Infrastructure e.g. large power lines, gas and oil pipelines, railway lines, electricity substations, communication facilities;
- Tourist and recreational e.g. tourist sites and facilities, resorts, retreats;
- Mines;
- Commercial forests e.g. pine plantations, eucalypt plantations and commercial native forests;
- Drinking water catchments; and
- Military facilities.

#### **Environmental**

- Threatened species, populations and ecological communities and Ramsar wetlands; and
- Locally important species and ecological communities, such as species and ecological communities especially sensitive to fire.

## **Cultural**

- Aboriginal significance – Aboriginal places and items of significance;
- Non-indigenous heritage – places and items arising from the early occupation of NSW by European or other non-indigenous settlers; and
- Other cultural assets – community halls, clubs and recreational facilities.

See Appendix 2 for the full list of assets identified in the Hunters Hill Lane Cove Parramatta Ryde BFMC area. See maps 1-3 for the location of assets to be treated under this BFRMP

### **2.3.2 Assessing the Bush Fire Risk - Consequence**

Once the assets were identified, the consequence of a bush fire impacting on these assets was assessed.

See Appendix 2 for the consequence ratings assigned to each asset identified in the Hunters Hill Lane Cove Parramatta Ryde BFMC area.

The different asset types had different assessment processes used to determine the consequence. These processes are identified below.

#### **Human settlement**

A potential fire behaviour model using vegetation type, slope and separation distance was used to produce a threat rating for human settlement assets. The vulnerability of the asset to a bush fire was also assessed and a rating assigned. These ratings were then used to assess the consequence of a bush fire impacting upon a human settlement asset.

Special Fire Protection (SFP) assets were considered inherently more vulnerable to bush fire due to mobility capacity, knowledge or other issues relating to their inhabitants, (e.g. the elderly, infirm, children or tourists) and therefore stricter requirements for vulnerability assessment and rating were applied. Due to circumstances surrounding NSPs and their use during a bush fire, stricter requirements for vulnerability assessment and rating will also apply to these assets.

#### **Economic**

The level of economic impact e.g. local, regional or state, as well as the economic recovery costs (how long and complicated a financial recovery will be) of the asset were identified. These ratings were used to assess the consequence of a bush fire impacting upon an economic asset.

#### **Environmental**

Environmental assets with known minimum fire threshold were assessed to determine if they were at risk of a bush fire within the five year life of the BFRMP using fire history *and fire threshold* data. Those environmental assets which were within or above the fire threshold were not assessed in the BFRMP, as the negative impact of a fire within the five year period was determined as being low and may even be of benefit to the asset and surrounding habitat.

The vulnerability of an environmental asset was determined by its conservation status and its geographic extent (distribution across the landscape). Vulnerability and potential impact of bush fire were used to assess the consequence of a bush fire impacting upon an environmental asset.

### **Cultural**

For non-indigenous historical, Aboriginal and other cultural assets a potential fire behaviour model using fuel load, slope and proximity was used to produce a threat rating. The physical vulnerability of the asset to a bush fire was also assessed. These ratings were then used to assess the consequence of a bush fire impacting upon a cultural asset.

### **2.3.3 Assessing the Bush Fire Risk - Likelihood**

For all asset types the likelihood of a bush fire occurring was assessed. This involves considering fire history, including ignition cause and patterns, known fire paths, access, containment potential and potential fire run (size of the vegetated area). See Appendix 2 for the likelihood ratings assigned to each asset identified in the Hunters Hill Lane Cove Parramatta Ryde BFMC area.

### **2.3.4 Identifying the level of risk**

The consequence and likelihood ratings were then used to identify the level of risk. See Appendix 2 for the risk ratings assigned to each asset identified in the Hunters Hill Lane Cove Parramatta Ryde BFMC area.

### **2.3.5 Evaluating the Bush Fire Risk**

Once the risk ratings for each asset were identified, they were evaluated to:

- a) confirm that risk levels identified in the risk analysis process are appropriate and reflect the relative seriousness of the bush fire risk;
- b) identify which assets require treatments; and
- c) identify treatment priorities.

### **2.3.6 Prioritising Treatments**

No organisation has limitless resources to deal with adverse risk. It is therefore necessary to define priorities. The bush fire risk ratings determined were used to prioritise the risk treatments, i.e. areas of extreme risk were considered first for treatment, then very high, then high then medium then low.

Treatments used within this five-year Bush Fire Risk Management Plan can be applied annually, periodically throughout the life of the Plan, as deemed necessary due to changing risk or as a single targeted event.

### 2.3.7 Risk Acceptability

Risks below a certain level were assessed as not requiring treatment within the life of this plan as defined within Table 2-1. This is due to a combination of public education; general mitigation works and Fire agencies response times and resources availability. Within the Hunters Hill Lane Cove Parramatta Ryde BFMC area the level of acceptability is 'Medium'. Areas of medium and low risk are likely to be managed by routine procedures and so do not require a specific application of resources.

Risk Rating	Mitigation
Extreme	Application of specific and coordinated treatment strategies as defined within this Bush Fire Risk Management Plan
Very High	
High	
Medium	Land owners / managers may apply the identified treatment strategy as part of their routine annual works, maintenance and inspection programs
Low	

**Table 2-1** Risk acceptability and mitigation

All NSPs for a BFMC area will require ongoing treatment by the applicable landowner to ensure that the asset remains viable as a place of last resort for people during a bush fire. Therefore, all NSP assets are allocated specific treatments in this Plan, regardless of the level of bush fire risk identified and the risk acceptability nominated by the Hunters Hill Lane Cove Parramatta Ryde BFMC.



## Chapter 3. Treating the Risk

### 3.1 Bush Fire Management Zones

Bush Fire Management Zones were identified within the Hunters Hill Lane Cove Parramatta Ryde BFMC area and mapped (see maps 1-4). These zones identify the fire management intent for a specific area. See Table 3.1 for descriptions of the zones and their purposes. The four categories of Bush Fire Management Zones are:

- Asset Protection Zone (APZ);
- Strategic Fire Advantage Zone (SFAZ);
- Land Management Zone (LMZ); and
- Fire Exclusion Zone (FEZ).

Some of these zones (usually Land Management Zones) may be further classified within this category by the land manager, e.g. LMZ -Heritage Management Zone (NPWS).

LMZs that have been identified as a polygon on the map will have defined management objectives. Below is a list of each identified LMZ and its associated management objectives.

Zone	Purpose	Suppression Objective(s)	Zone characteristics
Asset Protection Zone	To protect human life, property and highly valued public assets and values.	To enable the safe use of <b>Direct Attack</b> suppression strategies within the zone. To minimise Bush Fire impacts on undefended assets.	As per RFS document <i>Standards for Asset Protection Zones</i> .
Strategic Fire Advantage Zone	To provide strategic areas of fire protection advantage which will reduce the speed and intensity of Bush Fires, and reduce the potential for spot fire development; To aid containment of wildfires to existing management boundaries.	To improve the likelihood and safe use of: <b>Parallel Attack</b> suppression strategies within the zone. and/or <b>Indirect Attack</b> (back burning) in high to very high fire weather conditions within the zone.  To reduce the likelihood of: Crown fire development within the zone. and/or Spot fire ignition potential from the zone.	Zone width related to suppression objectives and dependent upon: <ul style="list-style-type: none"> <li>• Topography</li> <li>• Aspect</li> <li>• Spotting propensity</li> <li>• Location of adjacent firebreaks</li> <li>• Mosaic pattern of treatment</li> </ul> Assess Overall Fuel Hazard (OFH) once vegetation communities reach minimum fire thresholds within this plan. Management practices should aim to achieve mosaic fuel reduction patterns so that the majority of the SFAZ has an OFH of less than high.
Land Management Zone	To meet relevant land management objectives in areas where APZs or SFAZs are not appropriate.	As per the land management and fire protection objectives of the responsible land management agency. To reduce the likelihood of spread of fires. To undertake mosaic burning	As appropriate to achieve land management e.g. heritage and/or fire protection e.g. broad scale mosaic burning objectives.
Fire Exclusion Zone	To exclude Bush Fires.	N/A	Variable dependant on size of fire sensitive area requiring protection.

Table 3-1 Bush Fire Management Zones



NB: OFH refers the Overall Fuel Hazard Guide as described in the document published by (Dept. of Sustainability and Environment 3<sup>rd</sup> ed. 1999); State-wide procedures for assessment of fuel hazard will be developed in conjunction with the BFCC.

**Note:** All areas that are not mapped or described as APZs or SFAZs are considered as LMZs.

### **3.2 BFMC Wide Treatments**

BFMC wide treatments are activities which reduce the overall bush fire risk within the BFMC area and are undertaken on an ongoing basis as part of normal business. These treatments are not linked to specific assets in the BFRMP, rather they are applied across all or part of the BFMC area as designated by legislation or agency policy. BFMC wide treatments include the following:

- **Reviewing the bush fire prone land map**

These maps identify bush fire prone land and are used to trigger whether a development application is assessed using *Planning for Bush Fire Protection*<sup>1</sup>.

- **Ensuring developments in bush fire prone land comply with *Planning for Bush Fire Protection***

This assessment process requires new applications for development to include bush fire protection measures.

- **Using the Local Environment Plan/s (LEPs) to control developments in areas with a bush fire risk**

LEPs can be used to exclude development in extreme bush fire risk areas or where bush fire protection measures cannot be incorporated.

- **Varying the standard bush fire danger period as required**

In years where the weather is particularly adverse the bush fire danger period may be brought in early or extended. This is assessed every year by the BFMC.

- **Requiring permits during the bush fire danger period**

In the bush fire danger period, a fire safety permit is required to light a fire in the open. Permits specify conditions such as firefighting equipment that must be on site, or restrict burns based on weather conditions.

- **Prosecution of arsonists/offenders**

Under the *Rural Fires Act 1997* persons may be prosecuted for breaching the conditions on a fire permit, lighting a fire during a Total Fire Ban, allowing fire to escape their property, or other breaches of the Act.

- **Investigation of bush fire cause**

All bush fires which do not have a known cause are investigated to identify how they started.

---

<sup>1</sup> NSW Rural Fire Service 2006 *Planning for Bush Fire Protection: A guide for councils, planners, fire authorities and developers.*

- **Normal fire suppression activities**

Responding to bush fire is a normal business activity for the fire fighting authorities.

- **Assessing and managing compliance with strategic fire fighting resource allocation provisions**

Strategic fire fighting resource allocation provisions is the process used to identify the number of stations, brigades and appliances required in an area, and considers members, training, assets and hazards.

- **Preparation of a S52 Operations Coordination Plan**

The Operations Coordination Plan is prepared biannually and sets out how coordinated fire fighting will occur. It includes specific operational restrictions on fire fighting techniques in certain areas, where fires will be managed from, and how agencies involved can communicate during operations.

- **Fire Management Plans or Plans of Management**

Some land management agencies have developed fire management plans or plans of management with specific fire or fuel management strategies, for example a Forestry Corporation of NSW Regional Fuel Management Risk Plan, a NPWS Fire Management Strategy. These publicly exhibited plans form the basis for operational fire planning on public parks, reserves and forests.

- **Bush Fire Hazard Complaints**

If someone is concerned about possible bush fire hazards on a neighbouring property or any other land, then this can be reported to the RFS Commissioner or their local RFS Fire Control Centre. The complaint will be investigated and may result in a notice being issued to the landowner or manager to reduce the hazard.

### **3.3 Asset Specific Treatments**

There are five broad strategy groups available to treat the bush fire risk to assets identified in the BFRMP.

The types of asset specific treatments in each strategy group used in the Hunters Hill Lane Cove Parramatta Ryde BFMC areas are listed below. A full list of the treatment strategies in the Hunters Hill Lane Cove Parramatta Ryde BFMC area are in Appendix 3.

<b>Strategy</b>	<b>Targeted treatments used in the Hunters Hill Lane Cove Parramatta Ryde BFMC area</b>
Ignition Management	Suspend fire generated activities on days of very high to extreme fire danger. Undertake patrols of National Parks during TOBANS. Close National Parks and managed bushland reserves as required.
Hazard Reduction	Manage fuel loads; bushland structure and accessibility Perform annual maintenance along APZ and maintain annual Hazard Reduction Works Program Manage land as per agency Fire Management Plans
Community Education	Manage CFU as per FRNSW policy Community information, (Letterbox drops)
Preparedness	Inspect and maintain fire trail as required Manage CFU as per FRNSW policy Review Pre-incident plans Undertake site inspections as required

**Table 3-2** Asset specific treatments used in the Hunters Hill Lane Cove Parramatta Ryde BFMC area

### 3.4 Fire Thresholds

The vegetation in the Hunters Hill Lane Cove Parramatta Ryde BFMC area was classified into fire threshold categories (Table 3.3).

Vegetation formation	Minimum SFAZ Threshold	Minimum LMZ Threshold	Maximum Threshold	Notes
Rainforest	NA	NA	NA	Fire should be avoided.
Alpine complex	NA	NA	NA	Fire should be avoided.
Wet Sclerophyll forest (shrubby sub formation)	25	30	60	Crown fires should be avoided in the lower end of the interval range.
Wet Sclerophyll forest (grassy sub formation)	10	15	50	Crown fires should be avoided in the lower end of the interval range.
Grassy woodland	5	8	40	Minimum interval of 10 years should apply in the southern Tablelands area. Occasional intervals greater than 15 years may be desirable.
Grassland	2	3	10	Occasional intervals greater than 7 years should be included in coastal areas. There was insufficient data to give a maximum interval; available evidence indicates maximum intervals should be approximately 10 years.
Dry sclerophyll forest (shrub/grass sub formation)	5	8	50	Occasional intervals greater than 25 years may be desirable.
Dry sclerophyll forest (shrub sub formation)	7	10	30	Occasional intervals greater than 25 years may be desirable.
Heathlands	7	10	30	Occasional intervals greater than 20 years may be desirable.
Freshwater wetlands	6	10	35	Occasional intervals greater than 30 years may be desirable.
Forested wetlands	7	10	35	Some intervals greater than 20 years may be desirable.
Saline wetlands	NA	NA	NA	Fire should be avoided.
Semi-arid woodlands (grassy sub formation)	6	9	No max	Not enough data for a maximum fire interval.
Semi-arid woodlands (shrubby sub formation)	10	15	No Max	Not enough data for a maximum fire interval.
Arid shrublands (chenopod sub formation)	NA	NA	NA	Fire should be avoided.
Arid shrublands (acacia sub formation)	10	15	No Max	Not enough data for a maximum fire interval.

Table 3-3 Fire Thresholds for Vegetation Categories

### ***3.5 Annual Works Programs***

The land management agencies and firefighting authorities responsible for implementing the treatments identified in this plan will include those treatments in their annual works programs detailing how, when, and where the required activities will be undertaken.

The Hunters Hill Lane Cove Parramatta Ryde BFMC has four annual works programs, these are:

1. Prescribed Burning (Broad area & Piles);
2. Mechanical and Manual works;
3. Community Engagement / Education; and
4. Fire Access Fire Trails (FAFT) – Annual inspections and maintenance as required.

### ***3.6 Implementation***

When the treatments identified in this BFRMP are implemented there are a number of issues that need to be considered by the responsible agency including environmental assessments and approvals, smoke management and prescribed burn plans.



## **Chapter 4. Performance Monitoring and Reviewing**

### ***4.1 Review***

This BFRMP must be reviewed and updated within each successive five-year period from the constitution of the BFMC. The Hunters Hill Lane Cove Parramatta Ryde BFMC will also review this plan as necessary to account for any changes in context or risk. This may be triggered by a range of circumstances, including but not limited to:

- changes to the BFMC area, organisational responsibilities or legislation;
- changes to the bush fire risk in the area; or
- following a major fire event.

### ***4.2 Monitoring***

The BFMC is required to monitor progress towards the completion of treatment works listed in the BFRMP, and the timeliness of the works.

### ***4.3 Reporting***

The BFMC is required to report annually to the BFCC on its progress in implementing the bush fire risk management activities identified in this plan.

### ***4.4 Performance Measurements***

State wide performance measurements which are linked to the BFRMP have been identified by the BFCC. All BFMCs must use these to monitor and report on their success in reducing the bush fire risk in their BFMC area.



## Appendices

Appendix 1 Community Participation Strategy

Appendix 2 Asset Register

Appendix 3 Treatment Register

Appendix 4 Map Display Areas

Map 1	Hunters Hill
Map 2	Lane Cove
Map 3	Parramatta
Map 4	Ryde

## Appendix 1 Community Participation Strategy

Target Audience	Method of Communication	Method of Notification	Key messages/ purpose	Resources	Notes & Responsibility
<b>Bushland-interface residents</b>	Local Newspaper print advertisement. Document link on Land Managers websites	Media Release, Mayoral Column, Letters to LGA Precincts, website, Flyer, Poster	Introduce BFRMP, community issues, discuss treatment options & community responsibilities	Media article, Flyers/posters, website, agency representatives, host webpage link, feedback email address	FRNSW to draft print advertisement. Land Managers to place advertisement, and maintain host link on website. FRNSW to collate feedback.
<b>Broader Community</b>	Local Newspaper print advertisement. Document link on Land Managers websites	Media Release, Mayoral Column, Letters to LGA Precincts, website, Flyer, Poster	Introduce BFRMP, community issues, discuss treatment options, community responsibilities	Media article, Flyers/posters, website, agency representatives, host webpage link, feedback email address	FRNSW to draft print advertisement. Land Managers to place advertisement, and maintain host link on website. FRNSW to collate feedback.
<b>Mayor, Councillor &amp; CEO Briefing</b>	Advising letter and explanation of the Bush Fire Risk Plan. Send hard copy of Draft Plan	Advising Letter to CEO / General Manager	Introduce BFRMP, Implications for agency	Letter, host webpage link, feedback email address	FRNSW to draft & send letter / copy of BFRMP to identify focus group. Land Managers to maintain host link on website. FRNSW to collate feedback.
<b>Staff Briefing</b>	Agency email and webpage link	Email	Introduce BFRMP, Implications for agency	Email, host webpage link, feedback email address	Land Managers to maintain host link on website. Land Managers to send email.
<b>Interest Groups (Bush care etc.)</b>	Local Newspaper print advertisement. Document link on Land Managers websites	Media Release, Mayoral Column, Letters to LGA Precincts, website, Flyer, Poster	Introduce BFRMP, community issues, discuss treatment options, community responsibilities	Media article, Flyers/posters, website, agency representatives, host webpage link, feedback email address	FRNSW to draft print advertisement. Land Managers to place advertisement, and maintain host link on website. FRNSW to collate feedback.
<b>CFU</b>	FRNSW email CFU members	FRNSW CFU Officer, to email CFU members and advise of BFRMP	Introduce BFRMP, community issues; discuss treatment options, community responsibilities, and CFU involvement and policies.	Letter, host webpage link, feedback email address	Land Managers to maintain host link on website. FRNSW BFO to send email to CFU Officer.
<b>Draft Exhibition</b>	Static display material	Newspaper advertisements	Final public exhibition requirement	Static display materials and copies of Draft BFRMP	Land Managers to host display. Land Managers to place advertisement, and maintain host link on website. FRNSW to collate feedback via email.

## Appendix 2 Asset Register

### Non Mapped Assets

Asset ID	Priority	Asset name	Risk	Likelihood	Consequence	Asset type	Asset sub type	Display area	Asset Location	Treatment number	Notes
0	1B	Aboriginal Sites - LCNP	Extreme	Likely	Catastrophic	Cultural	Aboriginal Significance	RYDE			Contact LSNP for further details
0	1B	Aboriginal Heritage Sites - Lane Cove	Extreme	Likely	Catastrophic	Cultural	Aboriginal Significance	LANE COVE	Throughout LGA		Contact Lane Cove Council for further details
0	2A	Aboriginal Heritage Significance - Ryde	Very High	Likely	Major	Cultural	Aboriginal Significance	RYDE	Throughout area		Contact Ryde Council for further details
0	2A	Aboriginal Heritage Sites - Hunters Hill	Very High	Likely	Major	Cultural	Aboriginal Significance	HUNTERS HILL	Throughout Hunters Hill LGA		Contact Hunters Hill Council for further details
0	2A	Porters Creek Bridge	Very High	Likely	Major	Cultural	Non Indigenous	RYDE		54	
0	2A	LCNP stonework	Very High	Likely	Major	Cultural	Non Indigenous	RYDE			
0	3A	Riding for the Disabled (RDA)	High	Likely	Moderate	Economic	Tourist and Recreational	RYDE	118-120 Culloden Rd, Macquarie Park	40	As per letter from City of Ryde Director Of Planning & Environment
0	3A	Fauna	High	Likely	Moderate	Environment	Vulnerable	HUNTERS HILL;LANE COVE;RYDE;WILLOUGHBY			Contact Council or NSW for further information.
0	3A	Flora	High	Likely	Moderate	Environment	Vulnerable	HUNTERS HILL;LANE COVE;RYDE;WILLOUGHBY			Contact Council or NPWS for further information
0	4	Locally Rare Plants	Medium	Likely	Minor	Cultural	Other	LANE COVE	Throughout LGA		
0	NA	LCNP Boatshed	Low	Unlikely	Moderate	Cultural	Non Indigenous	RYDE			



Appendix 2 Asset Register

Mapped Assets

Asset ID	Priority	Asset name	Risk	Likelihood	Consequence	Asset type	Asset sub type	Display area	Treatment number	Asset Location	Notes
1	1A	The Kings School & Tara Anglican School for Girls	Extreme	Almost certain	Catastrophic	Human Settlement	Special Fire Protection	PARRAMATTA	8:9,12,11	Pennant Hills Road, North Rocks	
2	1A	Hunts Creek Lower Precinct Urban Properties	Extreme	Almost certain	Catastrophic	Human Settlement	Residential	PARRAMATTA	7:13,14,10	Hunts Creek North Rocks	
3	1A	Darling Mills Precinct (South) Urban Properties	Extreme	Almost certain	Catastrophic	Human Settlement	Residential	PARRAMATTA	7:10,14,13	Baulkham Hills and west Pennant Hills	
4	1B	Basaco Road	Extreme	Likely	Catastrophic	Human Settlement	Residential	RYDE	17:26,37,29	Basaco Road	
5	1B	Residential, North Ryde	Extreme	Likely	Catastrophic	Human Settlement	Residential	RYDE	18:19,20,29	Macquarie Park - NW of Lane Cove Road	
6	1B	Lane Cove River Tourist Park	Extreme	Likely	Catastrophic	Human Settlement	Special Fire Protection	RYDE	24:25,29,37	Macquarie Park - Plassy Road	
7	1B	Crimea Road	Extreme	Likely	Catastrophic	Human Settlement	Residential	RYDE	15:16,27,29	Marafeld - Crimea Road	
8	1B	Ryde Hospital	Extreme	Likely	Catastrophic	Human Settlement	Special Fire Protection	RYDE	28:39	Denistone - Denistone Road	
9	1B	De Burghs Cottage	Extreme	Likely	Catastrophic	Human Settlement	Residential	RYDE	21:22,23	Denistone - Denistone Road	
10	1B	Electricity Transmission Lines	Extreme	Likely	Catastrophic	Economic	Infrastructure	LANE COVE,RYDE	32:30,31,33,34	Lane Cove River Valley	EA responsibility to manage vegetation underneath lines and keep stanchions accessible.
11	1B	Possum Control - chick care centre	Extreme	Likely	Catastrophic	Human Settlement	Special Fire Protection	LANE COVE	29:35	76 Mowbray Rd Lane Cove North	
12	1B	Quebec Road Residents	Extreme	Likely	Catastrophic	Human Settlement	Residential	RYDE	38:38		
13	1B	KU Osborne Park Preschool	Extreme	Likely	Catastrophic	Human Settlement	Special Fire Protection	LANE COVE	29:38	2 Osborne Road Lane Cove	
14	1B	Centenary Avenue Residential	Extreme	Likely	Catastrophic	Human Settlement	Residential	PARRAMATTA	29:38	North Mead	
15	1B	Parramatta Dam Wall	Extreme	Likely	Catastrophic	Cultural	Non Indigenous	PARRAMATTA	38	North Parramatta	
16	2A	Manfield Park	Extreme	Likely	Catastrophic	Human Settlement	Residential	RYDE	40	136/94-116 Culloden Rd, 199 Epping Rd/192-200 Vimeira Rd MARSFIELD	Added to BFRMP as per letter from City of Ryde Director of Planning & Environment Liz Coad
17	2A	St Therese Primary School	Very High	Likely	Major	Human Settlement	Special Fire Protection	RYDE	27:29	Denistone - Blaxland Road	30/07/2020 Downgraded risk from Extreme 1B as per letter from City of Ryde Director Enviro & Planning
18	2A	Montessori Preschool	Very High	Likely	Major	Human Settlement	Special Fire Protection	RYDE	27:29	North Ryde - Cressy Road	30/07/2020 Downgraded risk from Extreme 1B as per letter from City of Ryde Director Enviro & Planning
19	2A	AusGrid facility and compound	Very High	Likely	Major	Economic	Infrastructure	RYDE	67		
20	2A	Energy Australia Power Sub Station	Very High	Likely	Major	Economic	Infrastructure	LANE COVE	43:57	29 Sirius Rd Lane Cove West	Sugarloaf powerline transmission point
21	2A	Standish St, Greenwich	Very High	Likely	Major	Human Settlement	Residential	LANE COVE	58:42	Standish St Greenwich	
22	2A	Wicks Road Waste Transfer Station	Very High	Likely	Major	Economic	Commercial	RYDE	64	Macquarie Park - Wicks Road	
23	2A	River Avenue - Residential	Very High	Likely	Major	Human Settlement	Residential	RYDE	46:47,36,29	North Ryde - River Avenue	
24	2A	Riverside Corporate Park	Very High	Likely	Major	Economic	Commercial	RYDE	45:65	North Ryde - Debn Road	
25	2A	Pembroke Electrical Sub Station	Very High	Likely	Major	Economic	Infrastructure	RYDE	69:51	Marafeld - Pembroke Road	
26	2A	Terry Creek - Residential	Very High	Likely	Major	Human Settlement	Residential	RYDE	51:69,58	Eastwood - Vimeira Road	
27	2A	New Horizons	Very High	Likely	Major	Economic	Commercial	RYDE	48		
28	2A	Field of Mars Residential 2	Very High	Likely	Major	Human Settlement	Residential	RYDE	41:60,58	Ryde - Field of Mars	
29	2A	Barton Reserve Residential	Very High	Likely	Major	Human Settlement	Residential	RYDE	50:60,58	Ryde - Pidding Road	
30	2A	Denistone Park - Residential	Very High	Likely	Major	Human Settlement	Residential	RYDE	52:60,58	Denistone - Florence Ave	
31	2A	Brush Farm Park - Residential 1	Very High	Likely	Major	Human Settlement	Residential	RYDE		Eastwood - Lawson Street	
32	2A	Buffalo Creek Reserve	Very High	Likely	Major	Human Settlement	Residential	HUNTERS HILL	56:49,58	Barons Cresc	
33	2A	Brush Farm Park Residential 2	Very High	Likely	Major	Human Settlement	Residential	RYDE	53	Eastwood	
34	2A	Best Street Private Residential	Very High	Likely	Major	Human Settlement	Residential	LANE COVE	58:59	Best Street	
35	2A	Field of Mars Residential 1	Very High	Likely	Major	Human Settlement	Residential	RYDE	58:60,41		
36	2A	CSIRO Radiophysics Laboratory	Very High	Likely	Major	Economic	Infrastructure	RYDE	51	Marafeld - Pembroke Road	
37	2A	Warraroon Reserve West Side 2 - Riverview	Very High	Likely	Major	Human Settlement	Residential	LANE COVE	58:59	Warraroon Reserve Westside 2 - Riverview	Kallaroo Rd, Wierona Rd
38	2A	Warraroon Reserve West Side 1 - Riverview	Very High	Likely	Major	Human Settlement	Residential	LANE COVE	59:55	Warraroon Road, River Road - Riverview	
39	2A	Lane Cove Industrial Estate	Very High	Likely	Major	Economic	Commercial	LANE COVE	43:57,33	Lane Cove West	
40	2A	Loyal Road Industrial Area	Very High	Likely	Major	Economic	Commercial	PARRAMATTA	61:62	Loyal Road, North Rocks	
41	2A	Moxhams Peninsula Residential	Very High	Likely	Major	Human Settlement	Residential	PARRAMATTA	62:58	Northmead	
42	2A	Terry Creek Residential North	Very High	Likely	Major	Human Settlement	Residential	PARRAMATTA	56:62	North Epping	
43	2A	Terry Creek Residential South	Very High	Likely	Major	Human Settlement	Residential	PARRAMATTA	56:62	North Epping	
44	2A	Newington Armoury Facility	Very High	Likely	Major	Cultural	Non Indigenous	PARRAMATTA	63	Newington	
45	2A	Sydney Water Facility	Very High	Likely	Major	Economic	Infrastructure	RYDE	59		
46	2A	Sydney Water Dosing Unit	Very High	Likely	Major	Economic	Infrastructure	RYDE		90 Crimea Rd, Marafeld	As per letter from City of Ryde Director of Planning and Environment
47	2A	Field of Mars Reserve Environmentally Vulnerable Flora	Very High	Likely	Major	Environment	Vulnerable	RYDE		Cressy Rd, Ryde	As per letter from City of Ryde Director addition of Environmental Vulnerable plant species (Epacris, Pimelea, Melaleuca)
48	2A	Lucknow Park Environmentally Vulnerable Flora	Very High	Likely	Major	Environment	Vulnerable	RYDE		Crimea Rd, Marafeld	As per letter from City of Ryde Director addition of Environmental Vulnerable plant species (Epacris, Pimelea, Melaleuca)
49	2A	Pembroke Park Environmentally Vulnerable Flora	Very High	Likely	Major	Environment	Vulnerable	RYDE		Pembroke Rd, Marafeld	As per letter from City of Ryde Director addition of Environmental Vulnerable plant species (Epacris, Pimelea, Melaleuca)
50	2A	Somenet Park Environmentally Vulnerable Flora	Very High	Likely	Major	Environment	Vulnerable	RYDE		Crinera Rd, North Ryde	As per letter from City of Ryde Director addition of Environmental Vulnerable plant species (Epacris, Pimelea, Melaleuca)
51	2B	Hunts Creek Upper Precinct Urban Properties	High	Possible	Catastrophic	Human Settlement	Residential	PARRAMATTA	66:67,64		
0	3A	Riding for the Disabled (RDA)	High	Likely	Moderate	Economic	Tourist and Recreational	RYDE	40	116-120 Culloden Rd, Macquarie Park	As per letter from City of Ryde Director Of Planning & Environment
0	3A	Fauna	High	Likely	Moderate	Environment	Vulnerable	HUNTERS HILL,LANE COVE,RYDE,WILLOUGHBY			Contact Council or NSWPS for further information.
0	3A	Flora	High	Likely	Moderate	Environment	Vulnerable	HUNTERS HILL,LANE COVE,RYDE,WILLOUGHBY			Contact Council or NPWS for further information.
52	3A	Tetira Sub Station	High	Likely	Moderate	Economic	Infrastructure	RYDE	71	Denistone - Chatham Road	30/07/2020 Downgraded risk from Extreme 1B as per letter from City of Ryde Director Enviro & Planning
53	3A	Khye Creek - Residential	High	Likely	Moderate	Human Settlement	Residential	RYDE	69:60,60,58	North Ryde - Cressy Road	30/07/2020 Downgraded risk from Extreme 1B as per letter from City of Ryde Director Enviro & Planning
54	3A	Darvall Park - Residential	High	Likely	Moderate	Human Settlement	Residential	RYDE	60:70	Denistone - Chatham Road	
55	3A	Myall Reserve - Residential	High	Likely	Moderate	Human Settlement	Residential	RYDE		North Ryde - Berheim Road	
56	3A	Koonereer Picnic Area	High	Likely	Moderate	Economic	Tourist and Recreational	RYDE	73		30/07/2020 Downgraded risk from Extreme 1B as per letter from City of Ryde Director Enviro & Planning
57	3A	SG Johnson - chemical factory	High	Likely	Moderate	Economic	Commercial	LANE COVE	72:83	160 Epping Rd Lane Cove	includes picnic area, toilet block, shelters and BBQ's
58	3A	Office Block - Epping Rd	High	Likely	Moderate	Economic	Commercial	LANE COVE	83:75	166 Epping Rd Lane Cove West	Office facility
59	3A	Eden Garden Retail Centre	High	Likely	Moderate	Economic	Commercial	RYDE	76:77	Macquarie Park - Lane Cove Road	
60	3A	Northern Suburbs Cemetery	High	Likely	Moderate	Economic	Cultural	RYDE	87	Macquarie Park - Debn Road	
61	3A	North Ryde RSL Club	High	Likely	Moderate	Economic	Commercial	RYDE	85	North Ryde - Magdala Road	
62	3A	Banool, Nundah Reserves	High	Likely	Moderate	Human Settlement	Residential	RYDE	82:85	North Ryde - Pittwater Road	
63	3A	Field of Mars Cemetery	High	Likely	Moderate	Cultural	Non Indigenous	RYDE	83:84,86	Ryde - Quarry Road	
64	3A	Field of Mars Environmental Education Centre	High	Likely	Moderate	Human Settlement	Special Fire Protection	RYDE	84:83	Ryde - Field of Mars	
65	3A	Tunks Hill Picnic Area	High	Likely	Moderate	Economic	Tourist and Recreational	RYDE	77:54		includes picnic shed, toilet block and playground
66	3A	Scribbly Gum Picnic Area	High	Likely	Moderate	Economic	Tourist and Recreational	RYDE	24:78		includes picnic area, toilet block and shelters
67	3A	Commandment Rock Picnic Area	High	Likely	Moderate	Economic	Tourist and Recreational	RYDE	78		includes picnic area, toilet block and shelters
68	3A	Cottonwood Glen Picnic Area	High	Likely	Moderate	Economic	Tourist and Recreational	RYDE	78		includes picnic area, toilet block and shelters
69	3A	Carters Creek Picnic Area	High	Likely	Moderate	Economic	Tourist and Recreational	RYDE	79:80		includes picnic area, toilet block, shelters and BBQ
70	3A	Moala Picnic Area	High	Likely	Moderate	Economic	Tourist and Recreational	RYDE	81		includes picnic area, toilet block and shelters
71	3A	Hours and Blue Wren Picnic Area	High	Likely	Moderate	Economic	Tourist and Recreational	RYDE	81:74		includes toilet block, picnic area, shelters and BBQ's
72	3A	Lane Cove Boatshed	High	Likely	Moderate	Economic	Tourist and Recreational	RYDE	81		Lane Cove River Boatshed including NPWS ticket machine
73	3A	Blackman Park Synthetic Sports complex	High	Likely	Moderate	Economic	Tourist and Recreational	LANE COVE	84		Synthetic sports fields and building complex
74	3A	Northern Suburbs Crematorium & Gardens	High	Likely	Moderate	Cultural	Non Indigenous	RYDE	74:81	Lane Cove	
75	3A	Epping Aquatic Leisure Centre	High	Likely	Moderate	Economic	Tourist and Recreational	PARRAMATTA	64	Epping	
76	3A	Christie Park	High	Likely	Moderate	Economic	Tourist and Recreational	RYDE	84:86	Macquarie Park - Christie Road	
77	3A	Waterloo Park Residential	High	Likely	Moderate	Human Settlement	Residential	RYDE	89:88		
78	3A	Eastwood Guide Hill	High	Likely	Moderate	Economic	Tourist and Recreational	RYDE	90	15 Brnsh Rd Eastwood	As per letter from City of Ryde Director of Environment and Planning
79	3B	St Ignatius College - Riverview	High	Possible	Major	Human Settlement	Special Fire Protection	LANE COVE	91:92	Riverview Street	
80	3B	Darling Mills Ck. Precinct (Murray Farm) Urban Properties	High	Possible	Major	Human Settlement	Residential	PARRAMATTA	83:84		
81	3C	Montefiore Jewish Home	High	Unlikely	Catastrophic	Human Settlement	Special Fire Protection	HUNTERS HILL	87:88	High St	
82	3C	Warraroon Reserve East Side - Longueville	High	Unlikely	Catastrophic	Human Settlement	Residential	LANE COVE	95:55,58	Warraroon Reserve East Side - Longueville	
83	3C	Ternysson Park Residential - Bridge St, River Rd - Riverview	High	Unlikely	Catastrophic	Human Settlement	Residential	LANE COVE	88:100	Bridge St, River Rd, Fox St - Riverview	
84	3C	Ternysson Park Residential - College St Sth	High	Unlikely	Catastrophic	Human Settlement	Residential	LANE COVE	100:88	College St Sth, Sofofa Av, Hamilton St, Fox St	
85	3C	Wood St Lane Cove West	High	Unlikely	Catastrophic	Human Settlement	Residential	LANE COVE	88:106	Wood St - Lane Cove West	
86	3C	Aged and Disability Housing - Lane Cove West	High	Unlikely	Catastrophic	Human Settlement	Special Fire Protection	LANE COVE	105:101	80 Parreroe St Lane Cove West	
87	3C	Greenwich Hospital	High	Unlikely	Catastrophic	Human Settlement	Special Fire Protection	LANE COVE	107:98,99	River Rd Greenwich	
88	3C	East Ryde Public School	High	Unlikely	Catastrophic	Human Settlement	Special Fire Protection	RYDE	88:107		
89	3C	Riverglade Reserve Residential 1	High	Unlikely	Catastrophic	Human Settlement	Residential	HUNTERS HILL	88:103,104	Richmond Cresc	
90	3C	Marist Sisters College	High	Unlikely	Catastrophic	Human Settlement	Special Fire Protection	HUNTERS HILL	88:102,107	Woolwich Rd	
91	3C	Moore St - Lane Cove West	High	Unlikely	Catastrophic	Human Settlement	Residential	LANE COVE	88:96	Moore St - Lane Cove West	
92	3C	Alambie Peninsula Residential	High	Unlikely	Catastrophic	Human Settlement	Residential	PARRAMATTA	88:105	Northmead	
93	3C	Northmead Public School	High	Unlikely	Catastrophic	Human Settlement	Special Fire Protection	PARRAMATTA	105:107	Northmead	
94	3C	Courtlands Age Care	High	Unlikely	Catastrophic	Human Settlement	Special Fire Protection	PARRAMATTA	105:107	Caringford	



Appendix 2 Asset Register

Mapped Assets

95	3C	Beecroft Residential	High	Unlikely	Catastrophic	Human Settlement	Residential	PARRAMATTA	88;105	Beecroft	
96	3C	Ryde Secondary College	High	Unlikely	Catastrophic	Human Settlement	Special Fire Protection	RYDE	107;105	5 Malvina St Ryde	
97	4	Brush Farm Park Sports Facilities	Medium	Likely	Minor	Economic	Tourist and Recreational	RYDE	86;84	Eastwood - Lawson Street	30/07/2020 Downgraded risk from Extreme 1B as per letter from City of Ryde Director Enviro & Planning
98	4	Valleyview Rd, Greenwich	Medium	Unlikely	Major	Human Settlement	Residential	LANE COVE	117;109	Valleyview Rd - Bushland Park - Greenwich	
99	4	M2 Offices & Toll points	Medium	Unlikely	Major	Economic	Infrastructure	RYDE	110;119	Macquarie Park - M2	
100	4	Fairylands	Medium	Likely	Minor	Economic	Tourist and Recreational	RYDE	87		Historic Fairylands Pleasure Grounds
101	4	Mowbray Rd, Merinda, Pinaroo Rd - Lane Cove	Medium	Unlikely	Major	Human Settlement	Residential	LANE COVE	111;112;108	Mowbray Rd, Merinda, Pinaroo Rd - Lane Cove North	
102	4	Obsome Rd - Lane Cove	Medium	Unlikely	Major	Human Settlement	Residential	LANE COVE	113;58;117	Obsome Rd - Lane Cove	
103	4	Ryde SES	Medium	Likely	Minor	Human Settlement	Special Fire Protection	RYDE	119	Macquarie Park - Wicks Road	
104	4	Magdala Park	Medium	Likely	Minor	Economic	Tourist and Recreational	RYDE	119	North Ryde - Magdala Road	
105	4	Field of Mars Visitors Centre	Medium	Unlikely	Major	Human Settlement	Special Fire Protection	RYDE	119	Field of Mars Reserve	
106	4	De Burghs entrance box	Medium	Likely	Minor	Economic	Tourist and Recreational	RYDE	114;115		
107	4	Sugarloaf Carpark	Medium	Likely	Minor	Economic	Tourist and Recreational	RYDE	122		
108	4	Sydney Water compound River Ave	Medium	Unlikely	Major	Economic	Infrastructure	RYDE	36		Sydney Water facility
109	4	Child Care Centre - Happy Kids Kindergarten	Medium	Unlikely	Major	Human Settlement	Special Fire Protection	LANE COVE	111;108;117	638 Mowbray, Lane Cove North	
110	4	Orion Rd Child Care Centre	Medium	Unlikely	Major	Human Settlement	Special Fire Protection	LANE COVE	117	Orion Rd Lane Cove West	
111	4	Residents - Killys Bush	Medium	Unlikely	Major	Human Settlement	Residential	HUNTERS HILL	118;117	South of Woolwich Rd	
112	4	Boronja Park Residential 2	Medium	Unlikely	Major	Human Settlement	Residential	HUNTERS HILL	116;117	Boronja Ave	
113	4	Francis St Reserve	Medium	Unlikely	Major	Human Settlement	Residential	HUNTERS HILL	117	Francis St	
114	4	Theological College	Medium	Unlikely	Major	Human Settlement	Special Fire Protection	HUNTERS HILL	121	Gladesville Rd	
115	4	Riverglade Reserve Residential 2	Medium	Unlikely	Major	Human Settlement	Residential	HUNTERS HILL	117		
116	4	Merton Complex - Residential mixed use.	Medium	Unlikely	Major	Human Settlement	Residential	LANE COVE	120		
117	4	Sherwood Street Residential	Medium	Unlikely	Major	Human Settlement	Residential	PARRAMATTA	117;119		
118	4	Redbank Road Residential	Medium	Unlikely	Major	Human Settlement	Residential	PARRAMATTA	117;119	Northmead	
119	4	Model Farms Residential	Medium	Unlikely	Major	Human Settlement	Residential	PARRAMATTA	119;117	Winston Hills	
120	4	Yarrabee Residential	Medium	Unlikely	Major	Human Settlement	Residential	PARRAMATTA	119;117	Winston Hills	
121	4	Vineyard Creek Residential	Medium	Unlikely	Major	Human Settlement	Residential	PARRAMATTA	117;119	Dundas	
122	4	Galering Residential	Medium	Unlikely	Major	Human Settlement	Residential	PARRAMATTA	117;119	Carrynsford	
123	4	Kerry Residential	Medium	Unlikely	Major	Human Settlement	Residential	PARRAMATTA	117;119	Epping	
124	4	Ryde Bus Depot	Medium	Unlikely	Major	Economic	Commercial	RYDE	119		
125	4	East Ryde Scout Hall	Medium	Likely	Minor	Economic	Tourist and Recreational	RYDE	117		
126	NA	Burrows Park Residential	Low	Unlikely	Moderate	Human Settlement	Residential	RYDE	123;117;119	Ryde - Princes Street	30/07/2020 Downgraded risk from Extreme 1B as per letter from City of Ryde Director Enviro & Planning
127	NA	Boronja Park Residential 1	Low	Unlikely	Moderate	Human Settlement	Residential	HUNTERS HILL	131	High St	
128	NA	Factory Warehouse - Mowbray Rd	Low	Unlikely	Moderate	Economic	Commercial	LANE COVE	132;133	700-704 Mowbray Rd Lane Cove North	
129	NA	Elizabeth Pde, Gordon Cres, Kullah Pde - Lane Cove North	Low	Unlikely	Moderate	Human Settlement	Residential	LANE COVE	127;134	Elizabeth Pde, Gordon Cres, Kullah Pde - Lane Cove North	
130	NA	Myee Cres to Cape St - Lane Cove West	Low	Unlikely	Moderate	Human Settlement	Residential	LANE COVE	126;129	Myee Cres to Cape St - Lane Cove West	
131	NA	Macquarie University Sports Centre	Low	Unlikely	Minor	Economic	Tourist and Recreational	RYDE	135	Macquarie Park - Culloden Road	
132	NA	Brush Park Bowling Club	Low	Unlikely	Moderate	Economic	Commercial	RYDE	134	Eastwood - Rutledge Street	
133	NA	Sugarloaf Point picnic area	Low	Unlikely	Minor	Economic	Tourist and Recreational	RYDE	125		
134	NA	Backman Park Tennis Club	Low	Unlikely	Minor	Economic	Tourist and Recreational	LANE COVE	124	Lloyd Rees Dve, Lane Cove West	
135	NA	Epping Boys High (School)	Low	Unlikely	Moderate	Human Settlement	Special Fire Protection	RYDE	133	Crimea Road Marsfield	
136	NA	NSP - St Ignace College Junior School	Low	Unlikely	Moderate	Human Settlement	Other	LANE COVE	130		NSP
137	NA	NSP - Bayview Park Greenwich	Low	Unlikely	Moderate	Human Settlement	Other	LANE COVE	130		
138	NA	NSP - Woodford Bay Bicentennial Reserve	Low	Unlikely	Moderate	Human Settlement	Other	LANE COVE	130		
139	NA	NSP - Pottery Green Lane Cove	Low	Unlikely	Moderate	Human Settlement	Other	LANE COVE	130		
140	NA	NSP - Kingsford Smith Oval Longueville	Low	Unlikely	Moderate	Human Settlement	Other	LANE COVE	130		
141	NA	NSP - Linley Point Reserve	Low	Unlikely	Moderate	Human Settlement	Other	LANE COVE	130		
142	NA	NSP - Marjorie York Playground	Low	Unlikely	Moderate	Human Settlement	Other	LANE COVE	130		
143	NA	NSP - Carpark Macquarie Shopping Centre	Low	Unlikely	Moderate	Human Settlement	Other	RYDE	130		
144	NA	NSP - Monash Park	Low	Unlikely	Moderate	Human Settlement	Other	RYDE	130		
145	NA	Bundilla Scout Camp	Low	Unlikely	Minor	Economic	Tourist and Recreational	PARRAMATTA	128	Northmead	
146	NA	John Curtin Community Education Centre	Low	Unlikely	Minor	Economic	Tourist and Recreational	PARRAMATTA	128	Winston Hills	
147	NA	Lake Parramatta Kiosk Recreation Area	Low	Unlikely	Minor	Economic	Tourist and Recreational	PARRAMATTA	128	North Parramatta	



Appendix 3 Treatment Register

Non Mapped Assets

Priority (Risk Rating)	Asset ID	Asset Name	Asset Location	Class	Subclass	Strategy	Treatment ID	Action Description	Responsible Agencies	Other RA	Support Agencies	Other SA	1819	1920	2021	2122
1B (Extreme)	0	Aboriginal Heritage Sites - Lane Cove	Throughout LGA	Cultural Heritage	Aboriginal Significance											
		Aboriginal Sites - LCNP		Cultural Heritage	Aboriginal Significance											
		Aboriginal Heritage Significance - Ryde	Throughout area	Cultural Heritage	Aboriginal Significance											
		Aboriginal Heritage Sites - Hunters Hill	Throughout Hunters Hill LGA	Cultural Heritage	Aboriginal Significance											
		LCNP stonework		Cultural Heritage	Non Indigenous											
		Porters Creek Bridge		Cultural Heritage	Non Indigenous	Hazard Reduction	54	Maintain SFAZ - Tunks Hill	NPWS		FRNSW					
2A (Very High)	0	Telsira Telecommunication Tower - Lane Cove West	opp 87 Mars Rd Lane Cove West	Economic	Infrastructure	Hazard Reduction	30	Maintain APZ - Old Pacific Power Site	LGA/Private				[1819]	[1920]	[2021]	[2122]
	31						Maintain Blackman Park APZ	LGA				[1819]	[1920]	[2021]	[2122]	
	32						Maintain APZ - 35 Sirius Rd Lane Cove West	Private/Other	Energy Australia	LGA/Other	Energy Australia	[1819]	[1920]	[2021]	[2122]	
	33						Underlake fuel management - Ventemans Reach LMZ	LGA				[1819]	[1920]	[2021]	[2122]	
	44						Maintain SFAZ - Ventemans Reach end of Mars Rd	LGA			FRNSW	[1819]	[1920]	[2021]	[2122]	
3A (High)	0	Fauna		Environmental	Vulnerable											
		Flora		Environmental	Vulnerable											
		Riding for the Disabled (RDA)	118-120 Culloden Rd, Macquarie Park	Economic	Tourist and Recreation	Community Education	40	Annual letter with key bushfire safety messages	FRNSW		LGA				[2021]	[2122]
4 (Medium)	0	Locally Rare Plants	Throughout LGA	Cultural Heritage	Other											
NA (Low)	0	LCNP Boatshed		Cultural Heritage	Non Indigenous											

Appendix 3 Treatment Register  
Mapped Assets

Priority (Risk Rating)	Asset ID	Asset Name	Asset Location	Class	Subclass	Strategy	Treatment ID	Action Description	Responsible Agencies	Other RA	Support Agencies	Other SA	2019	2020	2021	2022		
1A (Extreme)	1	The Kings School & Tara Anglican School for Girls	Pennant Hills Road, North Rocks	Human Settlement	Special Fire Protection	Hazard Reduction	9	Undertake mechanical and / or prescribed burning	Private			FRNSW		1819	1920	2021	2122	
							11	Manage APZ fuel by mechanical work or pile burning	Private			FRNSW		1819	1920	2021	2122	
							8	Site inspection & review of Pre Incident Plan	FRNSW					1819	1920	2021	2122	
	2	Hunts Creek Lower Precinct Urban Properties	Hunts Creek North Rocks	Human Settlement	Residential	Hazard Reduction	12	Inspect fire trails and maintain as required	Private/Other		BRTB	LGA		1819	1920	2021	2122	
							10	Annual letter with key bushfire safety messages.	LGA				1819	1920	2021	2122		
							7	Undertake mechanical and / or prescribed burning	LGA/Other	BRTB, Deerubbin LALC & Sydney Water	FRNSW		1819	1920	2021	2122		
	3	Darling Mills Precinct (South) Urban Properties	Baukhams Hills and west Pennant Hills	Human Settlement	Residential	Preparedness	13	Inspect fire trails and maintain as required	LGA					1819	1920	2021	2122	
							14	Maintain CFU	FRNSW				1819	1920	2021	2122		
							10	Annual letter with key bushfire safety messages.	LGA				1819	1920	2021	2122		
	1B (Extreme)	4	Busaco Road	Busaco Road	Human Settlement	Residential	Community Education	29	Annual letter with key bushfire safety messages.	LGA					1819	1920	2021	2122
								17	Undertake works in Busaco Road SFAZ	NPWS				1819	1920	2021	2122	
								26	Maintain Busaco Road APZ	LGA/NPWS				1819	1920	2021	2122	
5		Residential, North Ryde	Macquarie Park - NW of Lane Cove Road	Human Settlement	Residential	Ignition Management	37	Restrict close reserve from public access	NPWS			FRNSW/Police		1819	1920	2021	2122	
							29	Annual letter with key bushfire safety messages.	LGA				1819	1920	2021	2122		
							18	Undertake works in Tuckwell Place A SFAZ	NPWS			LGA	1819	1920	2021	2122		
6		Lane Cove River Tourist Park	Macquarie Park - Plassy Road	Human Settlement	Special Fire Protection	Hazard Reduction	24	Undertake works in Scribbly Gums SFAZ	NPWS			FRNSW		1819	1920	2021	2122	
							25	Undertake works in Carters Creek A SFAZ	NPWS			FRNSW		1819	1920	2021	2122	
							37	Restrict close reserve from public access	NPWS			FRNSW/Police		1819	1920	2021	2122	
7		Crimea Road	Marsfield - Crimes Road	Human Settlement	Residential	Community Education	29	Annual letter with key bushfire safety messages.	LGA					1819	1920	2021	2122	
							15	Undertake works in Bertwami Reserve SFAZ	NPWS			LGA	1819	1920	2021	2122		
							16	Undertake works in Woodvale Ave SFAZ	NPWS			LGA/FRNSW	1819	1920	2021	2122		
2A (Very High)	8	Ryde Hospital	Denistone - Denistone Road	Human Settlement	Special Fire Protection	Hazard Reduction	28	Undertake works in Ryde Hospital LMZ	Other	Dept of Health				1819	1920	2021	2122	
							39	Inspect and maintain APZ line Ryde Hospital	FRNSW			LGA		1819	1920	2021	2122	
							21	Undertake works in Riverside Drive entry SFAZ	NPWS			FRNSW		1819	1920	2021	2122	
	9	De Burghs Cottage		Human Settlement	Residential	Hazard Reduction	22	Undertake works in Blue Side SFAZ	NPWS			FRNSW		1819	1920	2021	2122	
							23	Undertake works in Bloodwoods A SFAZ	NPWS			FRNSW		1819	1920	2021	2122	
							30	Maintain APZ - Old Pacific Power Site	LGA/Private				1819	1920	2021	2122		
	10	Electricity Transmission Lines	Lane Cove River Valley	Economic	Infrastructure	Hazard Reduction	31	Maintain Blackman Park APZ	LGA					1819	1920	2021	2122	
							32	Maintain APZ - 35 Sirius Rd Lane Cove West	Private/Other	Energy Australia	LGA/Other	Energy Australia	1819	1920	2021	2122		
							33	Undertake fuel management - Ventemans Reach LMZ	LGA				1819	1920	2021	2122		
	2B (High)	11	Possum Corner - child care centre	76 Movbray Rd Lane Cove North	Human Settlement	Special Fire Protection	Community Education	34	Maintain SFAZ - Magdala Road	NPWS					1819	1920	2021	2122
								29	Annual letter with key bushfire safety messages.	LGA				1819	1920	2021	2122	
								35	Undertake fuel management - Epping Rd Plateau west	LGA				1819	1920	2021	2122	
12		Quebec Road Residents		Human Settlement	Residential	Hazard Reduction	36	Inspect and maintain SFAZ - River Avenue	NPWS					1819	1920	2021	2122	
							38	Undertake mechanical and / or prescribed burning	LGA			FRNSW		1819	1920	2021	2122	
							29	Annual letter with key bushfire safety messages.	LGA				1819	1920	2021	2122		
13		KU Osborne Park Preschool	2 Osborne Road Lane Cove	Human Settlement	Special Fire Protection	Hazard Reduction	38	Undertake mechanical and / or prescribed burning	LGA			FRNSW		1819	1920	2021	2122	
							39	Annual letter with key bushfire safety messages.	LGA				1819	1920	2021	2122		
							38	Undertake mechanical and / or prescribed burning	LGA			FRNSW		1819	1920	2021	2122	
14		Centenary Avenue Residential	North Mead	Human Settlement	Residential	Community Education	29	Annual letter with key bushfire safety messages.	LGA					1819	1920	2021	2122	
							38	Undertake mechanical and / or prescribed burning	LGA			FRNSW		1819	1920	2021	2122	
							35	Undertake mechanical and / or prescribed burning	LGA			FRNSW		1819	1920	2021	2122	
15	Parramatta Dam Wall	North Parramatta	Cultural Heritage	Non Indigenous	Hazard Reduction	35	Undertake mechanical and / or prescribed burning	LGA					1819	1920	2021	2122		
						40	Annual letter with key bushfire safety messages	FRNSW			LGA	1819	1920	2021	2122			
						29	Annual letter with key bushfire safety messages.	LGA				1819	1920	2021	2122			
16	Marsfield Park	136/94-116 Cutoden Rd, 199 Epping Rd/192-200 Vimeira Rd MARSFIELD	Human Settlement	Residential	Community Education	40	Annual letter with key bushfire safety messages	FRNSW			LGA		1819	1920	2021	2122		
						29	Annual letter with key bushfire safety messages.	LGA				1819	1920	2021	2122			
						27	Maintain APZ	LGA/Private				1819	1920	2021	2122			
17	St Therese Primary School	Denistone - Blaxland Road	Human Settlement	Special Fire Protection	Community Education	29	Annual letter with key bushfire safety messages.	LGA					1819	1920	2021	2122		
						27	Maintain APZ	LGA/Private				1819	1920	2021	2122			
						29	Annual letter with key bushfire safety messages.	LGA				1819	1920	2021	2122			
18	Montessori PreSchool	North Ryde - Cressy Road	Human Settlement	Special Fire Protection	Preparedness	57	Maintain APZ	LGA/Private					1819	1920	2021	2122		
						57	Maintain agency maintenance / inspection program.	Other	Energy agency			1819	1920	2021	2122			
						43	Maintain SFAZ - Ventemans Reach (oslow/Mars Rd)	Other				1819	1920	2021	2122			
19	AusGrid facility and compound		Economic	Infrastructure	Hazard Reduction	43	Maintain SFAZ - Ventemans Reach (oslow/Mars Rd)	Other	Energy agency				1819	1920	2021	2122		
						57	Maintain agency maintenance / inspection program.	Other	Energy agency			1819	1920	2021	2122			
						58	Annual letter with key bushfire safety	LGA				1819	1920	2021	2122			
20	Energy Australia Power Sub Station	29 Sirius Rd Lane Cove West	Economic	Infrastructure	Preparedness	57	Maintain agency maintenance / inspection program.	Other	Energy agency				1819	1920	2021	2122		
						58	Annual letter with key bushfire safety	LGA				1819	1920	2021	2122			
						42	Inspect & maintain Gore Creek Reserve LMZ	LGA				1819	1920	2021	2122			
21	Standish St, Greenvick	Standish St Greenvick	Human Settlement	Residential	Hazard Reduction	58	Annual letter with key bushfire safety	LGA					1819	1920	2021	2122		
						42	Inspect & maintain Gore Creek Reserve LMZ	LGA				1819	1920	2021	2122			
						64	Undertake mechanical and / or prescribed burning	LGA			FRNSW		1819	1920	2021	2122		
22	Wicks Road Waste Transfer Station	Macquarie Park - Wicks Road	Economic	Commercial	Community Education	29	Annual letter with key bushfire safety messages.	LGA					1819	1920	2021	2122		
						36	Inspect and maintain SFAZ - River Avenue	NPWS				1819	1920	2021	2122			
						46	Inspect & maintain Kobada Rocks SFAZ	NPWS				1819	1920	2021	2122			
23	River Avenue - Residential	North Ryde - River Avenue	Human Settlement	Residential	Hazard Reduction	47	Inspect & maintain SFAZ (Quebec Road) as required	LGA/NPWS			FRNSW		1819	1920	2021	2122		
						45	Inspect & maintain SFAZ (Delhi Rd A) as required	NPWS			FRNSW		1819	1920	2021	2122		
						65	Maintain APZ at Riverside Corporate Park	FRNSW			LGA	1819	1920	2021	2122			
24	Riverside Corporate Park	North Ryde - Delhi Road	Economic	Commercial	Hazard Reduction	51	Inspect & maintain Pembroke Park LMZ as required	LGA			FRNSW		1819	1920	2021	2122		
						60	Maintain APZ	LGA/Other			FRNSW		1819	1920	2021	2122		
						58	Annual letter with key bushfire safety	LGA			AusGrid		1819	1920	2021	2122		
25	Pembroke Electrical Sub Station	Marsfield - Pembroke Road	Economic	Infrastructure	Hazard Reduction	51	Inspect & maintain Pembroke Park LMZ as required	LGA			FRNSW		1819	1920	2021	2122		
						60	Maintain APZ	LGA/Other			FRNSW		1819	1920	2021	2122		
						58	Annual letter with key bushfire safety	LGA			AusGrid		1819	1920	2021	2122		
26	Terry's Creek - Residential	Eastwood - Vimeira Road	Human Settlement	Residential	Hazard Reduction	60	Maintain APZ	LGA/Other			AusGrid		1819	1920	2021	2122		
						48	Inspect & maintain Wallumatta Nature Reserve SFAZ	NPWS				1819	1920	2021	2122			
						58	Annual letter with key bushfire safety	LGA				1819	1920	2021	2122			
27	NewHorizons		Economic	Commercial	Hazard Reduction	48	Inspect & maintain Wallumatta Nature Reserve SFAZ	NPWS					1819	1920	2021	2122		
						58	Annual letter with key bushfire safety	LGA				1819	1920	2021	2122			
						41	Manage fuel loads as required - LMZ Field of Mars	LGA			FRNSW		1819	1920	2021	2122		
28	Field of Mars Residential 2	Ryde - Field of Mars	Human Settlement	Residential	Hazard Reduction	60	Maintain APZ	LGA/Other			AusGrid		1819	1920	2021	2122		
						58	Annual letter with key bushfire safety	LGA				1819	1920	2021	2122			
						50	Annual letter with key bushfire safety	LGA				1819	1920	2021	2122			
29	Barton Reserve Residential	Ryde - Pidding Road	Human Settlement	Residential	Hazard Reduction	58	Inspect & maintain Barton Reserve LMZ as required	LGA			FRNSW		1819	1920	2021	2122		
						50	Maintain APZ	LGA/Other			AusGrid		1819	1920	2021	2122		
						58	Annual letter with key bushfire safety	LGA				1819	1920	2021	2122			
30	Denistone Park - Residential	Denistone - Florence Ave	Human Settlement	Residential	Community Education	58	Annual letter with key bushfire safety	LGA					1819	1920	2021	2122		
						52	Inspect & maintain Denistone Park LMZ as required	LGA			FRNSW		1819	1920	2021	2122		
						50	Maintain APZ	LGA/Other			AusGrid		1819	1920	2021	2122		
31	Brush Farm Park - Residential 1	Eastwood - Lawson Street	Human Settlement	Residential	Hazard Reduction	53	Inspect & maintain Brush Farm Park LMZ as required	LGA			FRNSW		1819	1920	2021	2122		
						58	Annual letter with key bushfire safety	LGA				1819	1920	2021	2122			
						49	Inspect and maintain LNCP LMZ	NPWS			LGA/FRNSW		1819	1920	2021	2122		
32	Buffalo Creek Reserve	Barons Cresc	Human Settlement	Residential	Hazard Reduction	56	Inspect & maintain Field of Mars LMZ as required	LGA			FRNSW		1819	1920	2021	2122		
						53	Inspect & maintain Brush Farm Park LMZ as required	LGA			FRNSW		1819	1920	2021	2122		
						58	Annual letter with key bushfire safety	LGA				1819	1920	2021	2122			
33	Brush Farm Park Residential 2	Eastwood	Human Settlement	Residential	Hazard Reduction	53	Inspect & maintain Brush Farm Park LMZ as required	LGA			FRNSW		1819	1920	2021	2122		
						58	Annual letter with key bushfire safety	LGA				1819	1920	2021	2122			
						59	Annual letter with key bushfire safety	LGA				1819	1920	2021	2122			







Appendix 3 Treatment Register

Mapped Assets

Asset ID	Asset Name	Address	Asset Type	Category	Priority	Activity	Frequency	Responsible Agency	Start Date	End Date	2019	2020	2021	2022
92	Alambie Peninsula Residential	Northmead	Human Settlement	Residential	Hazard Reduction	96	Undertake fuel reduction-Lower Stringybark Creek	LGA	(1819)	(1920)	(2021)	(2122)		
93	Northmead Public School	Northmead	Human Settlement	Special Fire Protection	Community Education	88	Annual letter with key bushfire safety messages	LGA	(1819)	(1920)	(2021)	(2122)		
94	Courtlands Age Care	Caringford	Human Settlement	Special Fire Protection	Hazard Reduction	105	Undertake mechanical and / or prescribed burning	LGA	FRNSW	(1819)	(1920)	(2021)	(2122)	
95	Beecroft Residential	Beecroft	Human Settlement	Residential	Preparedness	107	Site inspection & review of Pre Incident Plan	FRNSW	(1819)	(1920)	(2021)	(2122)		
96	Ryde Secondary College	5 Malva St Ryde	Human Settlement	Special Fire Protection	Hazard Reduction	105	Undertake mechanical and / or prescribed burning	LGA	FRNSW	(1819)	(1920)	(2021)	(2122)	
97	Brush Farm Park Sports Facilities	Eastwood - Lawson Street	Economic	Tourist and Recreation	Hazard Reduction	84	Undertake mechanical and / or prescribed burning	LGA	FRNSW	(1819)	(1920)	(2021)	(2122)	
98	Valleyview Rd, Greenwich	Valleyview Rd - Bushland Park - Greenwich	Human Settlement	Residential	Community Education	117	Annual letter with key bushfire safety messages.	LGA	(1819)	(1920)	(2021)	(2122)		
99	M2 Offices & Toll points	Macquarie Park - M2	Economic	Infrastructure	Hazard Reduction	109	Maintain LMZ - Bushland Park (eastern embankment)	LGA						
100	Fairylands		Economic	Tourist and Recreation	Hazard Reduction	110	APZ - create and maintain	Private						
101	Movbray Rd, Merinda, Pinaroo Rd - Lane Cove	Movbray Rd, Merinda, Pinaroo Rd - Lane Cove North	Human Settlement	Residential	Hazard Reduction	119	Undertake mechanical and / or prescribed burning	NPWS	FRNSW	(1819)	(1920)	(2021)	(2122)	
102	Osborne Rd - Lane Cove	Osborne Rd - Lane Cove	Human Settlement	Residential	Hazard Reduction	87	Undertake works in Lower Stringybark Creek LMZ	NPWS	FRNSW	(1819)	(1920)	(2021)	(2122)	
103	Ryde SES	Macquarie Park - Wicks Road	Human Settlement	Special Fire Protection	Hazard Reduction	108	Undertake works in Batten Reserve LMZ	LGA	FRNSW	(1819)	(1920)	(2021)	(2122)	
104	Magdala Park	North Ryde - Magdala Road	Economic	Tourist and Recreation	Hazard Reduction	111	Undertake works in Epping Rd Plateau SFAZ	LGA	FRNSW	(1819)	(1920)	(2021)	(2122)	
105	Field of Mars Visitors Centre	Field of Mars Reserve	Human Settlement	Special Fire Protection	Hazard Reduction	112	Undertake works in Batten Reserve-Pinaroo St SFAZ	LGA	FRNSW	(1819)	(1920)	(2021)	(2122)	
106	De Burghs entrance box		Economic	Tourist and Recreation	Community Education	58	Annual letter with key bushfire safety	LGA						
107	Sugarloaf Carpark		Economic	Tourist and Recreation	Hazard Reduction	117	Annual letter with key bushfire safety messages.	LGA	(1819)	(1920)	(2021)	(2122)		
108	Sydney Water compound River Ave		Economic	Infrastructure	Hazard Reduction	113	Undertake works in Osborne Rd LMZ	LGA	FRNSW	(1819)	(1920)	(2021)	(2122)	
109	Child Care Centre - Happy Kids Kindergarten	638 Movbray, Lane Cove North	Human Settlement	Special Fire Protection	Hazard Reduction	119	Undertake mechanical and / or prescribed burning	LGA	FRNSW	(1819)	(1920)	(2021)	(2122)	
110	Orion Rd Child Care Centre	Orion Rd Lane Cove West	Human Settlement	Special Fire Protection	Hazard Reduction	119	Undertake mechanical and / or prescribed burning	LGA	FRNSW	(1819)	(1920)	(2021)	(2122)	
111	Residents - Kullys Bush	South of Woollahr Rd	Human Settlement	Residential	Community Education	117	Annual letter with key bushfire safety messages.	LGA	(1819)	(1920)	(2021)	(2122)		
112	Boronia Park Residential 2	Boronia Ave	Human Settlement	Residential	Hazard Reduction	116	Maintain APZ - Boronia Park	LGA	(1819)	(1920)	(2021)	(2122)		
113	Francis St Reserve	Francis St	Human Settlement	Residential	Community Education	117	Annual letter with key bushfire safety messages.	LGA	(1819)	(1920)	(2021)	(2122)		
114	Theological College	Gladesville Rd	Human Settlement	Special Fire Protection	Hazard Reduction	121	Undertake mechanical and / or prescribed burning	Private	FRNSW	(1819)	(1920)	(2021)	(2122)	
115	Riverglade Reserve Residential 2		Human Settlement	Residential	Community Education	117	Annual letter with key bushfire safety messages.	LGA	(1819)	(1920)	(2021)	(2122)		
116	Meriton Complex - Residential mixed use.		Human Settlement	Residential	Preparedness	120	Undertake annual maintenance roster / inspection	Private	(1819)	(1920)	(2021)	(2122)		
117	Sherwood Street Residential		Human Settlement	Residential	Community Education	117	Annual letter with key bushfire safety messages.	LGA	FRNSW	(1819)	(1920)	(2021)	(2122)	
118	Redbank Road Residential	Northmead	Human Settlement	Residential	Hazard Reduction	119	Undertake mechanical and / or prescribed burning	LGA	FRNSW	(1819)	(1920)	(2021)	(2122)	
119	Model Farms Residential	Winston Hills	Human Settlement	Residential	Community Education	117	Annual letter with key bushfire safety messages.	LGA	FRNSW	(1819)	(1920)	(2021)	(2122)	
120	Yarrabee Residential	Winston Hills	Human Settlement	Residential	Hazard Reduction	119	Undertake mechanical and / or prescribed burning	LGA	FRNSW	(1819)	(1920)	(2021)	(2122)	
121	Vineyard Creek Residential	Dundas	Human Settlement	Residential	Community Education	117	Annual letter with key bushfire safety messages.	LGA	FRNSW	(1819)	(1920)	(2021)	(2122)	
122	Gairingl Residential	Caringford	Human Settlement	Residential	Hazard Reduction	119	Undertake mechanical and / or prescribed burning	LGA	FRNSW	(1819)	(1920)	(2021)	(2122)	
123	Kery Residential	Epping	Human Settlement	Residential	Community Education	117	Annual letter with key bushfire safety messages.	LGA	FRNSW	(1819)	(1920)	(2021)	(2122)	
124	Ryde Bus Depot		Economic	Commercial	Hazard Reduction	119	Undertake mechanical and / or prescribed burning	LGA	FRNSW	(1819)	(1920)	(2021)	(2122)	
125	East Ryde Scout Hall		Economic	Tourist and Recreation	Hazard Reduction	119	Undertake mechanical and / or prescribed burning	LGA	FRNSW	(1819)	(1920)	(2021)	(2122)	
126	Burrows Park Residential	Ryde - Princes Street	Human Settlement	Residential	Community Education	117	Annual letter with key bushfire safety messages.	LGA	(1819)	(1920)	(2021)	(2122)		
127	Boronia Park Residential 1	High St	Human Settlement	Residential	Hazard Reduction	123	Maintain APZ - Princes St	LGA	(1819)	(1920)	(2021)	(2122)		
128	Factory Warehouse - Movbray Rd	700-704 Movbray Rd Lane Cove North	Economic	Commercial	Hazard Reduction	131	Undertake works in Epping Plateau LMZ	LGA	FRNSW	(1819)	(1920)	(2021)	(2122)	
129	Elizabeth Pde, Gordon Cras, Kullah Pde - Lane Cove North	Elizabeth Pde, Gordon Cras, Kullah Pde - Lane Cove North	Human Settlement	Residential	Preparedness	133	Undertake annual maintenance roster / inspection	Private	(1819)	(1920)	(2021)	(2122)		
130	Myee Cres to Cope St - Lane Cove West	Myee Cres to Cope St - Lane Cove West	Human Settlement	Residential	Hazard Reduction	124	Annual letter with key bushfire safety messages.	LGA	FRNSW	(1819)	(1920)	(2021)	(2122)	
131	Macquarie University Sports Centre	Macquarie Park - Culloden Road	Economic	Tourist and Recreation	Hazard Reduction	126	Inspect & maintain APZ Behind Myee Cres	Private	LGA	(1819)	(1920)	(2021)	(2122)	
132	Brush Park Bowling Club	Eastwood - Rutledge Street	Economic	Commercial	Hazard Reduction	129	Undertake works in The Boreen LMZ	FRNSW	FRNSW/Other	Macquarie University	(1819)	(1920)	(2021)	(2122)
133	Sugarloaf Point Picnic Area		Economic	Tourist and Recreation	Community Education	134	Annual letter with key bushfire safety messages.	LGA	(1819)	(1920)	(2021)	(2122)		
134	Blackman Park Tennis Club	Lloyd Rees Dve, Lane Cove West	Economic	Tourist and Recreation	Hazard Reduction	125	Inspect & maintain Sugarloaf Point LMZ	NPWS	FRNSW	(1819)	(1920)	(2021)	(2122)	
135	Epping Boys High School	Crimes Road Marsfield	Human Settlement	Special Fire Protection	Preparedness	124	LMZ - Manage fuel loads	LGA	FRNSW	(1819)	(1920)	(2021)	(2122)	
136	NSP - St Ignatius College Junior School		Human Settlement	Other	Preparedness	133	Undertake annual maintenance roster / inspection	Private	(1819)	(1920)	(2021)	(2122)		
137	NSP - Bayview Park Greenwich		Human Settlement	Other	Preparedness	130	Conduct Annual Inspection	LGA	(1819)	(1920)	(2021)	(2122)		
138	NSP - Woodfield Bay Bicentennial Reserve		Human Settlement	Other	Preparedness	130	Conduct Annual Inspection	LGA	(1819)	(1920)	(2021)	(2122)		
139	NSP - Pottery Green Lane Cove		Human Settlement	Other	Preparedness	130	Conduct Annual Inspection	LGA	(1819)	(1920)	(2021)	(2122)		
140	NSP - Kingsford Smith Oval Longueville		Human Settlement	Other	Preparedness	130	Conduct Annual Inspection	LGA	(1819)	(1920)	(2021)	(2122)		
141	NSP - Lilyfield Post Reserve		Human Settlement	Other	Preparedness	130	Conduct Annual Inspection	LGA	(1819)	(1920)	(2021)	(2122)		
142	NSP - Marjorie York Playground		Human Settlement	Other	Preparedness	130	Conduct Annual Inspection	LGA	(1819)	(1920)	(2021)	(2122)		
143	NSP - Carpark Macquarie Shopping Centre		Human Settlement	Other	Preparedness	130	Conduct Annual Inspection	LGA	(1819)	(1920)	(2021)	(2122)		
144	NSP - Monash Park		Human Settlement	Other	Preparedness	130	Conduct Annual Inspection	LGA	(1819)	(1920)	(2021)	(2122)		
145	Bundilla Scout Camp	Northmead	Economic	Tourist and Recreation	Hazard Reduction	128	Undertake mechanical and / or prescribed burning	LGA	FRNSW	(1819)	(1920)	(2021)	(2122)	
146	John Curtin Community Education Centre	Winston Hills	Economic	Tourist and Recreation	Hazard Reduction	128	Undertake mechanical and / or prescribed burning	LGA	FRNSW	(1819)	(1920)	(2021)	(2122)	
147	Lake Parramatta Kiosk Recreation Area	North Parramatta	Economic	Tourist and Recreation	Hazard Reduction	128	Undertake mechanical and / or prescribed burning	LGA	FRNSW	(1819)	(1920)	(2021)	(2122)	



## Appendix 4 Map Display Areas

- Hunters Hill
- Lane Cove
- Parramatta
- Ryde





Map Ref	Asset name	Asset type	Subtype	Risk level	Priority	Treatment
22	Bubala Creek Reserve	Human	Residential	Very High	2A	T56, A4, S8
81	Meadowlands Jewish Home	Human	Special Use	High	3C	T97, S8
89	Riverglades Reserve Residential 1	Human	Residential	High	3C	T98, T92, T94
89	Maria Street College	Human	Special Use	High	3C	T98, T92, T97
110	Reservoirs - Sully Bush	Human	Residential	Medium	4	T116, T117
112	Sorensen Park Residential 2	Human	Residential	Medium	4	T116, T117
115	Francis St Reserve	Human	Residential	Medium	4	T117
116	Theological College	Human	Special Use	Medium	4	T121
115	Riverglades Reserve Residential 2	Human	Residential	Medium	4	T117
127	Sorensen Park Residential 1	Human	Residential	Low	NA	T131

# Hunters Hill, Lane Cove, Parramatta, Ryde BFMC Bush Fire Risk

HUNTERS HILL - Map Display Area  
Map 1 of 4

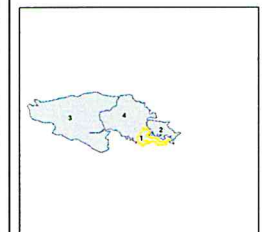
This Bush Fire Risk Management Plan (BFRMP) has been prepared by the Hunters Hill, Lane Cove, Parramatta, Ryde Bush Fire Management Committee (BFMC) pursuant to section 52 of the Bush Fire Act 2017.

The aim of this BFRMP is to reduce the adverse impact of bush fires on life, property and the environment.

The objectives of this BFRMP are to:

- reduce the number of human-caused bush fire incidents that cause damage to life, property or the environment;
- manage land to reduce the spread and intensity of bush fires while maintaining environmental and recreational values;
- reduce the community's vulnerability to bush fires by improving its preparedness; and
- effectively contain fires with a potential to cause damage to life, property and the environment.

This map forms part of the BFRMP for the Hunters Hill, Lane Cove, Parramatta, Ryde BFMC, covering the local government area(s) of: It should be viewed in conjunction with the accompanying BFRMP document which provides further details on the BFRMP area, the assets assessed and the risk assessment process used.



**Review**

Under the Bush Fire Act 2017 this plan must be reviewed and updated within each successive five year period following the completion of the BFRMP. The Hunters Hill, Lane Cove, Parramatta, Ryde BFMC will also review this plan as necessary. This may be triggered by a range of circumstances, including but not limited to:

- changes to the BFRMP area, organisational responsibilities or legislation;
- changes to the bush fire risk in the area; or
- following a major bush fire event.

**Assets**

The BFRMP identifies the assets that are considered by the Hunters Hill, Lane Cove, Parramatta, Ryde BFMC and community to be at risk from bush fires. Assets in the bush fire risk in each asset and require treatments designed to mitigate the risk. Assets in the BFRMP area identified as requiring treatment are listed in the assets table. Other assets within the BFRMP area that were assessed but not listed in the assets table are listed in the list of assets not included in the BFRMP document. The map ref number 'NA' denotes non-assessed assets.

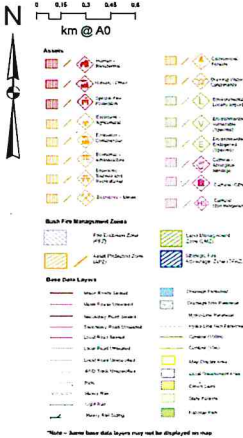
**Treatments**

Specific treatments assigned to assets in the Hunters Hill, Lane Cove, Parramatta, Ryde area are listed in the treatment table and listed in the assets table. They are designed to protect, Standard BFRMP, with treatment (i.e., not limited to a specific asset) which could be an ongoing task, including but not limited to:

- reducing the bush fire spread risk;
- ensuring developments in the bush fire prone land comply with Planning for Bush Fire Protection;
- using the Local Government Plan (LGP) to control development in areas with a bush fire risk;
- ensuring the standard bush fire danger period is required;
- ensuring correct signage bush fire danger period;
- provision of extinguishers;
- provision of fire hydrants;
- ensuring fire suppression systems;
- ensuring and managing compliance with strategic firefighting resource allocation management systems;
- provision of a 24/7 Operations Coordination Plan.

Note: an LMC, all areas not specifically mapped on an APZ, BFRMP, or FZ are considered as LMC for the bush fire risk management plan. For areas identified by an LMC on the map, please refer to the BFRMP document for the specific land management objectives.

Zone	Purpose	Suppression	Zone
<b>Asset Protection Zone</b>	To protect human life, property and highly valued public assets and values. To minimise the bush fire impact on unincorporated assets.	To ensure the safe use of Council Assets and ensure that the zone is protected from bush fire.	As per RFS Incident Response and Asset Protection Zones.
<b>High Value Asset Protection Zone</b>	To provide strategic areas of fire protection which will reduce the bush fire risk to the zone.	To ensure the safe use of Council Assets and ensure that the zone is protected from bush fire.	As per RFS Incident Response and Asset Protection Zones.
<b>Land Management Zone</b>	To meet relevant land management objectives in areas where APZs are not appropriate.	To reduce the bush fire risk to the zone.	As per RFS Incident Response and Asset Protection Zones.
<b>Fire Exclusion Zone</b>	To exclude bush fire.	NA	NA



ID	Treatment strategy	Action	Agency (Support)
T45	Hazard Reduction	Inspect and maintain LMCZ LMC	NSWFC (LGA, FRNSW)
T56	Hazard Reduction	Inspect & maintain Field of Mars LMC L1	LGA (FRNSW)
T58	Community Education	Annual letter with key bushfire safety messages	LGA
T88	Community Education	Annual letter with key bushfire safety messages	LGA
T97	Hazard Reduction	Maintain APZ - Sorensen Park	LGA
T102	Hazard Reduction	Maintain APZ - Wed Park Sport Field	LGA
T103	Hazard Reduction	Maintain APZ - Richmond Cross	LGA
T104	Hazard Reduction	Maintain APZ - Riverglades Reserve	LGA
T107	Preparedness	Site Inspection & review of Pre Incident Plan	FRNSW
T110	Hazard Reduction	Maintain APZ - Sorensen Park	LGA
T117	Community Education	Annual letter with key bushfire safety messages.	LGA
T119	Hazard Reduction	Maintain APZ	LGA
T121	Hazard Reduction	Maintain residential land & 1st prohibited	FRNSW (FRNSW)
T131	Hazard Reduction	Maintain APZ - Phoenix ID	LGA

**Disclaimer**

The Hunters Hill, Lane Cove, Parramatta, Ryde BFMC makes every effort to ensure the quality of the information available on this map. Errors relating to information on this map, users should carefully verify its accuracy, completeness and relevance for their purposes, and should obtain any appropriate professional advice relevant to the particular circumstances.

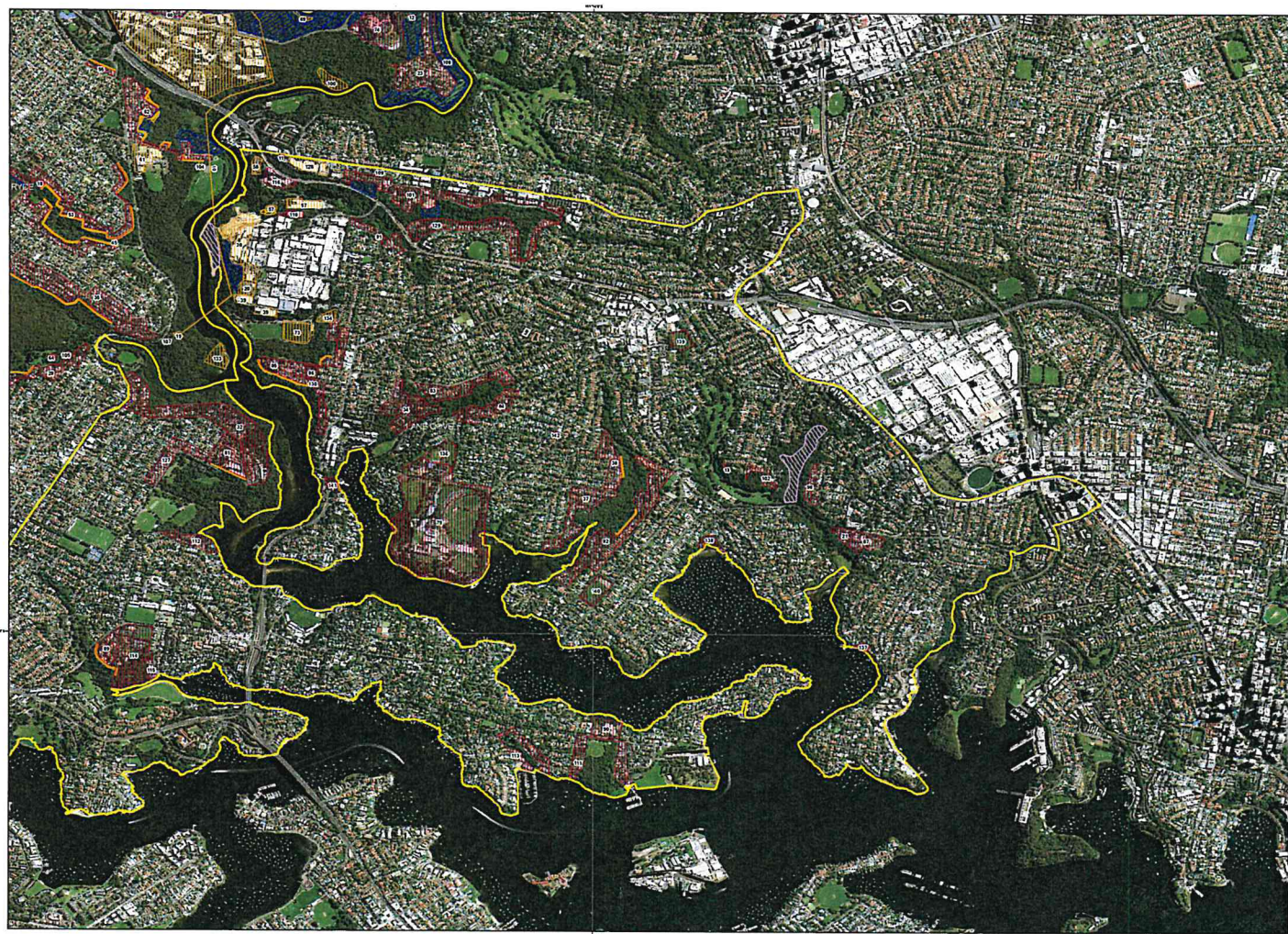
The Hunters Hill, Lane Cove, Parramatta, Ryde BFMC does not guarantee or warrant the accuracy, completeness or relevance of the information. Copyright Hunters Hill, Lane Cove, Parramatta, Ryde BFMC 2021.

Authorised by: \_\_\_\_\_ of Hunters Hill, Lane Cove, Parramatta, Ryde BFMC.  
Date created: Thursday, 28 April 2021



# Hunters Hill, Lane Cove, Parramatta, Ryde BFMC Bush Fire Risk

LANE COVE - Map Display Area  
Map 2 of 4



Map Ref	Asset Name	Asset Type	Subtype	Risk Level	Priority	Treatment
10	Electricity Transmission Lines	Economic	Infrastructure	Extreme	1B	011
11	Peppan Corner - child care centre	Human	Special Fire	Extreme	1B	729.26
13	RJ O'Brien Park Provisional	Human	Special Fire	Extreme	1B	729.24
14A	Tabern Telecommunication Tower - Lane Cove	Economic	Infrastructure	Very High	2A	(2)
20	Energy Australia Power Sub Station	Economic	Infrastructure	Very High	2A	743.57
21	Stanhil St Greenwash	Human	Residential	Very High	2A	738.42
37	Best Street Private Residential	Human	Residential	Very High	2A	738.59
34	Warrierson Reserves West Side 2 -	Human	Residential	Very High	2A	736.55
38	Warrierson Reserves West Side 1 -	Human	Residential	Very High	2A	736.25
16	Lane Cove Industrial Estate	Economic	Commercial	Very High	2A	743.27.33
17	St Johnson - chemical factory	Economic	Commercial	High	2A	732.81
58	Office Block - Egging Rd	Economic	Commercial	High	2A	732.75
77	Blackman Park Synthetic Sports	Economic	Tourist and	High	2A	734
79	St Ignace College - Revenue	Human	Special Fire	High	2B	731.92
82	Warrierson Reserves East Side -	Human	Residential	High	3C	736.55.58
83	Trojan Park Residential - Bridge St	Human	Residential	High	3C	738.100
84	Trojan Park Residential - College St	Human	Residential	High	3C	738.08
95	Wood St Lane Cove West	Human	Residential	High	3C	738.104
96	Age and Disability Housing - Lane Cove	Human	Special Fire	High	3C	737.50.99
97	Greenwash Hospital	Human	Special Fire	High	3C	737.50.99
91	Stones St - Lane Cove West	Human	Residential	High	3C	738.58
98	Mildmay Rd Greenwash	Human	Residential	Medium	4	7317.306
101	Meadway Rd, Nemds, Phoenix Rd -	Human	Residential	Medium	4	(2)
102	Obsons Rd - Lane Cove	Human	Residential	Medium	4	7315.58.117
100	Child Care Centre - Happy Kids	Human	Special Fire	Medium	4	(6)
110	Olson Rd Child Care Centre	Human	Special Fire	Medium	4	7317
118	Merton Complex - Residential street	Human	Residential	Medium	4	7329
128	Factory Warehouse - Monastery Rd	Economic	Commercial	Low	NA	7132.133
129	Elizabeth Pk, Gordon Crs, Lubbah Pk	Human	Residential	Low	NA	7127.134
130	Myers Crs to Cape St Lane Cove	Human	Residential	Low	NA	7128.126
134	Blackman Park Tennis Club	Economic	Tourist and	Low	NA	7124
136	NESP - St Ignace College Senior School	Human	Other	Low	NA	7130
137	NESP - Bayview Park Greenwash	Human	Other	Low	NA	7130
138	NESP - Woodford Bay Recreational	Human	Other	Low	NA	7130
139	NESP - Falsbery Green Lane Cove	Human	Other	Low	NA	7130
140	NESP - Kingsford Smith Oval Longview	Human	Other	Low	NA	7130
141	NESP - Liberty Park Reserves	Human	Other	Low	NA	7130
142	NESP - Maple York Playground	Human	Other	Low	NA	7130

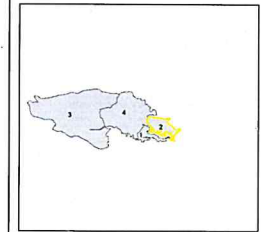
This Bush Fire Risk Management Plan (BFRMP) has been prepared by the Hunters Hill, Lane Cove, Parramatta, Ryde Bush Fire Management Committee (BFMC) pursuant to section 52 of the Bush Fires Act 1937.

The aim of this BFRMP is to reduce the adverse impact of bush fires on life, property and the environment.

The objectives of this BFRMP are to:

- Minimise the risk to life, property and the environment from bush fires.
- Minimise the risk to life, property and the environment from bush fires by ensuring that bush fire risk management measures are implemented in a timely and effective manner.
- Minimise the risk to life, property and the environment from bush fires by ensuring that bush fire risk management measures are implemented in a timely and effective manner.

This map forms part of the BFRMP for the Hunters Hill, Lane Cove, Parramatta, Ryde BFMC. The map is intended to provide a visual overview of the bush fire risk management measures identified in the BFRMP. The map is not intended to provide a detailed assessment of bush fire risk. For more information, please refer to the BFRMP document.



**Review**  
Under the Bush Fires Act 1937 this plan must be reviewed and updated, including any necessary amendments, at least once every five years. The review may be triggered by a change of circumstances, including but not limited to: a change in the BFMC's membership or responsibilities; a change in the BFMC's assets; a change in the bush fire risk to the area; or a change in the law.

**Assets**  
The BFRMP identifies the assets that are considered by the Hunters Hill, Lane Cove, Parramatta, Ryde BFMC and are included in the bush fire risk assessment. Assets are defined as any structure, building, or other man-made or natural object that is located within the bush fire risk management area. Assets are classified as either 'high value' or 'low value' based on their location, size, and potential impact.

**Treatments**  
Specific treatments are identified in this BFRMP to reduce the bush fire risk to the assets. Treatments are defined as any action taken to reduce the bush fire risk to an asset. Treatments are classified as either 'preventive' or 'reactive' based on whether they are intended to prevent a bush fire from occurring or to respond to a bush fire once it has occurred.

**Notes on LMC**  
All areas not specifically mapped as an APZ, SFZ or FEZ are considered as LMC for this risk management plan. For areas identified as LMC, the map is intended to provide a visual overview of the bush fire risk management measures identified in the BFRMP.

ID	Treatment strategy	Action	Agency (Support)
728	Community Education	Annual letter with key bushfire safety messages.	LGA (FRNSW)
729	Hazard Reduction	Maintain APZ - Chk Pacific Power Site	LGA, Phoenix
731	Hazard Reduction	Maintain Blackman Park APZ	LGA
732	Hazard Reduction	Maintain APZ - St Ignace Rd Lane Cove West	Phoenix, Energy Australia CoA,
733	Hazard Reduction	Maintain fuel management - Villamans	LGA
734	Hazard Reduction	Maintain SFZ - Maples Road	NPSW
735	Hazard Reduction	Maintain fuel management - Egging Rd	LGA
736	Hazard Reduction	Maintain mechanical and / or prescribed	LGA (FRNSW)
142	Hazard Reduction	Inspect & maintain Gore Creek Reserves LMC	LGA (Energy Australia)
143	Hazard Reduction	Inspect & maintain Gore Creek Reserves LMC	LGA (Energy Australia)
144	Hazard Reduction	Inspect & maintain Warrierson Reserves LMC	LGA (FRNSW)
737	Preparedness	Maintain agency maintenance / inspection	Energy agency
738	Community Education	Annual letter with key bushfire safety	LGA (FRNSW)
739	Hazard Reduction	Maintain mechanical and / or prescribed	LGA (FRNSW)
740	Hazard Reduction	Maintain fuel management - Lake St St Johnson LMC	Phoenix (LGA)
741	Hazard Reduction	Maintain LMC - Pumphouse Reserves	LGA (FRNSW)
742	Preparedness	Maintain annual maintenance roster /	Phoenix
743	Hazard Reduction	Maintain fuel management / inspection	LGA (FRNSW)
744	Hazard Reduction	Inspect & maintain APZ behind Myers Crs	Phoenix Co GGA
745	Hazard Reduction	Inspect & maintain APZ behind Myers Crs	LGA (FRNSW)
746	Hazard Reduction	Inspect & maintain APZ behind Myers Crs	LGA (FRNSW)
747	Hazard Reduction	Inspect & maintain APZ behind Myers Crs	LGA (FRNSW)
748	Hazard Reduction	Inspect & maintain APZ behind Myers Crs	LGA (FRNSW)
749	Hazard Reduction	Inspect & maintain APZ behind Myers Crs	LGA (FRNSW)
750	Hazard Reduction	Inspect & maintain APZ behind Myers Crs	LGA (FRNSW)

ID	Treatment strategy	Action	Agency (Support)
7100	Hazard Reduction	Undertake works in Trojan Park LMC	LGA (FRNSW)
7101	Hazard Reduction	LMZ - Luvvies Reserves / Blackman Park	LGA
7105	Hazard Reduction	LMZ - Luvvies Reserves / Blackman Park	LGA (FRNSW)
7106	Hazard Reduction	APZ - Maintain fuel loads	LGA
7107	Preparedness	Site inspection & review of Fire Incident Plan	FRNSW
7108	Hazard Reduction	Undertake works in Satter Reserves LMC	LGA (FRNSW)
7109	Hazard Reduction	Maintain LMC - Rusland Park Reserves	LGA
7111	Hazard Reduction	Undertake works in Egging Rd Phoenix SFZ	LGA (FRNSW)
7112	Hazard Reduction	Undertake works in Satter Reserves SFZ	LGA (FRNSW)
7113	Hazard Reduction	Undertake works in Obsons Rd LMC	LGA (FRNSW)
7117	Community Education	Annual letter with key bushfire safety messages.	LGA
7120	Preparedness	Undertake annual maintenance roster /	Phoenix
7124	Hazard Reduction	LMZ - Manage fuel loads	LGA (FRNSW)
7129	Hazard Reduction	Inspect & maintain APZ behind Myers Crs	Phoenix Co GGA
7137	Hazard Reduction	Undertake works in Elizabeth Pk LMC	LGA (FRNSW)
7138	Hazard Reduction	Undertake works in The Haven LMC	LGA (FRNSW)
7139	Preparedness	Conduct Annual Inspection	LGA
7132	Hazard Reduction	Undertake works in Egging Phoenix LMC	LGA (FRNSW)
7133	Preparedness	Undertake annual maintenance roster /	Phoenix
7134	Community Education	Annual letter with key bushfire safety messages.	LGA
7131	Preparedness	Maintain CFU	Phoenix (FRNSW)
7135	Hazard Reduction	Undertake mechanical and / or prescribed	LGA (FRNSW)
7136	Hazard Reduction	APZ - Maintain fuel loads	LGA
7138	Hazard Reduction	Undertake fuel reduction - Lower Stringybark	LGA
7139	Hazard Reduction	Inspect & maintain Ben Campbell Oval LMC	LGA
7140	Hazard Reduction	Inspect & maintain Ben Campbell Oval LMC	LGA



Zone	Purpose	Suppression	Zone
Asset Protection Zone	To protect human life, property and highly valued public assets and values.	To enable the safe use of these assets and values. To remove bush fire impacts on unattended assets.	As per BFRMP document. Standards for Asset Protection Zone.
Strategic Fire Management Zone	To provide strategic level of bush fire protection measures which will reduce the bush fire risk and reduce the potential for asset loss.	To improve the bush fire risk and reduce the potential for asset loss. To provide strategic level of bush fire protection measures which will reduce the bush fire risk and reduce the potential for asset loss.	Zone width related to suppression measures and dependent upon: - Aspect - Location of assets - Location of bush fire risk management measures - Assets Critical Fuel Load (CFL) - Assets Critical Fuel Load (CFL) - Assets Critical Fuel Load (CFL)
Land Management Zone	To meet relevant bush fire objectives to area adjacent to APZ or SFZ as per BFRMP.	As per the land management plan. To meet relevant bush fire objectives to area adjacent to APZ or SFZ as per BFRMP.	An opportunity to manage the bush fire risk to the area. To meet relevant bush fire objectives to area adjacent to APZ or SFZ as per BFRMP.
Fire Exclusion Zone	To exclude bush fire.	N/A	Variable dependent on size of the area and the bush fire risk.

**Disclaimer**  
The Hunters Hill, Lane Cove, Parramatta, Ryde BFMC makes every effort to ensure the quality of the information available on this map. Errors relating to the information on this map, even though they result in serious consequences and loss, are not the responsibility of the BFMC. The BFMC is not liable for any loss or damage resulting from the use of this map.

The Hunters Hill, Lane Cove, Parramatta, Ryde BFMC can not guarantee and accept no legal liability or responsibility for the accuracy, currency or completeness of the information, Copyright, Photos, Lane Cove, Parramatta, Ryde BFMC 2021.

Authorised by: Hunters Hill, Lane Cove, Parramatta, Ryde BFMC.  
Date created: Thursday, 29 April 2021  
GPRM-version-20-006







# Hunters Hill, Lane Cove, Parramatta, Ryde BFMC Bush Fire Risk

RYDE - Map Display Area  
Map 4 of 4



ID	Treatment strategy	Action	Agencies (Support)	ID	Treatment strategy	Action	Agencies (Support)
105	Hazard Reduction	Undertake works in Burnwood Reserve SFZ	NPWFS (LGA)	745	Hazard Reduction	Inspect & maintain SFZs (Dohi Rd) as is	NPWFS (FRNSW)
115	Hazard Reduction	Undertake works in Woodvale Ave SFZ	NPWFS (LGA, FRNSW)	746	Hazard Reduction	Inspect & maintain Burnwood Reserve SFZ	NPWFS
116	Hazard Reduction	Undertake works in Burnwood Reserve SFZ	NPWFS	747	Hazard Reduction	Inspect & maintain SFZs (Dohi Rd) as is	LGA, NPWFS (FRNSW)
117	Hazard Reduction	Undertake works in Burnwood Reserve SFZ	NPWFS	748	Hazard Reduction	Inspect & maintain Burnwood Reserve SFZ	NPWFS
118	Hazard Reduction	Undertake works in Burnwood Reserve SFZ	NPWFS (LGA)	749	Hazard Reduction	Inspect & maintain Burnwood Reserve SFZ	NPWFS
119	Hazard Reduction	Undertake works in Burnwood Reserve SFZ	NPWFS (LGA)	750	Hazard Reduction	Inspect & maintain Burnwood Reserve SFZ	LGA (FRNSW)
120	Hazard Reduction	Undertake works in Burnwood Reserve SFZ	NPWFS (LGA)	751	Hazard Reduction	Inspect & maintain Burnwood Reserve SFZ	LGA (FRNSW)
121	Hazard Reduction	Undertake works in Burnwood Reserve SFZ	NPWFS (FRNSW)	752	Hazard Reduction	Inspect & maintain Burnwood Reserve SFZ	LGA (FRNSW)
122	Hazard Reduction	Undertake works in Burnwood Reserve SFZ	NPWFS (FRNSW)	753	Hazard Reduction	Inspect & maintain Burnwood Reserve SFZ	LGA (FRNSW)
123	Hazard Reduction	Undertake works in Burnwood Reserve SFZ	NPWFS (FRNSW)	754	Hazard Reduction	Inspect & maintain Burnwood Reserve SFZ	NPWFS (FRNSW)
124	Hazard Reduction	Undertake works in Burnwood Reserve SFZ	NPWFS (FRNSW)	755	Preparation	Maintain agency maintenance / inspection	Energy Agency
125	Hazard Reduction	Undertake works in Burnwood Reserve SFZ	NPWFS (FRNSW)	756	Community Education	Annual letter with key bushfire safety	LGA
126	Hazard Reduction	Undertake works in Burnwood Reserve SFZ	NPWFS (FRNSW)	757	Community Education	Undertake mechanical and / or prescribed	LGA (FRNSW)
127	Hazard Reduction	Undertake works in Burnwood Reserve SFZ	NPWFS (FRNSW)	758	Hazard Reduction	Undertake mechanical and / or prescribed	LGA, AusGrid
128	Hazard Reduction	Undertake works in Burnwood Reserve SFZ	NPWFS (FRNSW)	759	Hazard Reduction	Undertake mechanical and / or prescribed	LGA (FRNSW)
129	Preparation	Undertake works in Burnwood Reserve SFZ	LGA, Private	760	Hazard Reduction	Undertake mechanical and / or prescribed	LGA, AusGrid
130	Hazard Reduction	Undertake works in Burnwood Reserve SFZ	NPWFS (FRNSW)	761	Hazard Reduction	Undertake mechanical and / or prescribed	LGA (FRNSW)
131	Community Education	Undertake works in Burnwood Reserve SFZ	LGA	762	Hazard Reduction	Undertake mechanical and / or prescribed	LGA (FRNSW)
132	Community Education	Undertake works in Burnwood Reserve SFZ	LGA	763	Hazard Reduction	Undertake mechanical and / or prescribed	LGA (FRNSW)
133	Community Education	Undertake works in Burnwood Reserve SFZ	LGA	764	Hazard Reduction	Undertake mechanical and / or prescribed	LGA (FRNSW)
134	Community Education	Undertake works in Burnwood Reserve SFZ	LGA	765	Hazard Reduction	Undertake mechanical and / or prescribed	LGA (FRNSW)
135	Community Education	Undertake works in Burnwood Reserve SFZ	LGA	766	Hazard Reduction	Undertake mechanical and / or prescribed	LGA (FRNSW)
136	Community Education	Undertake works in Burnwood Reserve SFZ	LGA	767	Hazard Reduction	Undertake mechanical and / or prescribed	LGA (FRNSW)
137	Community Education	Undertake works in Burnwood Reserve SFZ	LGA	768	Hazard Reduction	Undertake mechanical and / or prescribed	LGA (FRNSW)
138	Community Education	Undertake works in Burnwood Reserve SFZ	LGA	769	Hazard Reduction	Undertake mechanical and / or prescribed	LGA (FRNSW)
139	Community Education	Undertake works in Burnwood Reserve SFZ	LGA	770	Hazard Reduction	Undertake mechanical and / or prescribed	LGA (FRNSW)
140	Community Education	Undertake works in Burnwood Reserve SFZ	LGA	771	Hazard Reduction	Undertake mechanical and / or prescribed	LGA (FRNSW)
141	Community Education	Undertake works in Burnwood Reserve SFZ	LGA	772	Hazard Reduction	Undertake mechanical and / or prescribed	LGA (FRNSW)
142	Community Education	Undertake works in Burnwood Reserve SFZ	LGA	773	Hazard Reduction	Undertake mechanical and / or prescribed	LGA (FRNSW)
143	Community Education	Undertake works in Burnwood Reserve SFZ	LGA	774	Hazard Reduction	Undertake mechanical and / or prescribed	LGA (FRNSW)
144	Community Education	Undertake works in Burnwood Reserve SFZ	LGA	775	Hazard Reduction	Undertake mechanical and / or prescribed	LGA (FRNSW)
145	Community Education	Undertake works in Burnwood Reserve SFZ	LGA	776	Hazard Reduction	Undertake mechanical and / or prescribed	LGA (FRNSW)
146	Community Education	Undertake works in Burnwood Reserve SFZ	LGA	777	Hazard Reduction	Undertake mechanical and / or prescribed	LGA (FRNSW)
147	Community Education	Undertake works in Burnwood Reserve SFZ	LGA	778	Hazard Reduction	Undertake mechanical and / or prescribed	LGA (FRNSW)
148	Community Education	Undertake works in Burnwood Reserve SFZ	LGA	779	Hazard Reduction	Undertake mechanical and / or prescribed	LGA (FRNSW)
149	Community Education	Undertake works in Burnwood Reserve SFZ	LGA	780	Hazard Reduction	Undertake mechanical and / or prescribed	LGA (FRNSW)
150	Community Education	Undertake works in Burnwood Reserve SFZ	LGA	781	Hazard Reduction	Undertake mechanical and / or prescribed	LGA (FRNSW)
151	Community Education	Undertake works in Burnwood Reserve SFZ	LGA	782	Hazard Reduction	Undertake mechanical and / or prescribed	LGA (FRNSW)
152	Community Education	Undertake works in Burnwood Reserve SFZ	LGA	783	Hazard Reduction	Undertake mechanical and / or prescribed	LGA (FRNSW)
153	Community Education	Undertake works in Burnwood Reserve SFZ	LGA	784	Hazard Reduction	Undertake mechanical and / or prescribed	LGA (FRNSW)
154	Community Education	Undertake works in Burnwood Reserve SFZ	LGA	785	Hazard Reduction	Undertake mechanical and / or prescribed	LGA (FRNSW)
155	Community Education	Undertake works in Burnwood Reserve SFZ	LGA	786	Hazard Reduction	Undertake mechanical and / or prescribed	LGA (FRNSW)
156	Community Education	Undertake works in Burnwood Reserve SFZ	LGA	787	Hazard Reduction	Undertake mechanical and / or prescribed	LGA (FRNSW)
157	Community Education	Undertake works in Burnwood Reserve SFZ	LGA	788	Hazard Reduction	Undertake mechanical and / or prescribed	LGA (FRNSW)
158	Community Education	Undertake works in Burnwood Reserve SFZ	LGA	789	Hazard Reduction	Undertake mechanical and / or prescribed	LGA (FRNSW)
159	Community Education	Undertake works in Burnwood Reserve SFZ	LGA	790	Hazard Reduction	Undertake mechanical and / or prescribed	LGA (FRNSW)
160	Community Education	Undertake works in Burnwood Reserve SFZ	LGA	791	Hazard Reduction	Undertake mechanical and / or prescribed	LGA (FRNSW)
161	Community Education	Undertake works in Burnwood Reserve SFZ	LGA	792	Hazard Reduction	Undertake mechanical and / or prescribed	LGA (FRNSW)
162	Community Education	Undertake works in Burnwood Reserve SFZ	LGA	793	Hazard Reduction	Undertake mechanical and / or prescribed	LGA (FRNSW)
163	Community Education	Undertake works in Burnwood Reserve SFZ	LGA	794	Hazard Reduction	Undertake mechanical and / or prescribed	LGA (FRNSW)
164	Community Education	Undertake works in Burnwood Reserve SFZ	LGA	795	Hazard Reduction	Undertake mechanical and / or prescribed	LGA (FRNSW)
165	Community Education	Undertake works in Burnwood Reserve SFZ	LGA	796	Hazard Reduction	Undertake mechanical and / or prescribed	LGA (FRNSW)
166	Community Education	Undertake works in Burnwood Reserve SFZ	LGA	797	Hazard Reduction	Undertake mechanical and / or prescribed	LGA (FRNSW)
167	Community Education	Undertake works in Burnwood Reserve SFZ	LGA	798	Hazard Reduction	Undertake mechanical and / or prescribed	LGA (FRNSW)
168	Community Education	Undertake works in Burnwood Reserve SFZ	LGA	799	Hazard Reduction	Undertake mechanical and / or prescribed	LGA (FRNSW)
169	Community Education	Undertake works in Burnwood Reserve SFZ	LGA	800	Hazard Reduction	Undertake mechanical and / or prescribed	LGA (FRNSW)

ID	Treatment strategy	Action	Agencies (Support)
170	Hazard Reduction	Undertake works in Burnwood Reserve SFZ	NPWFS (FRNSW)
171	Hazard Reduction	Undertake works in Burnwood Reserve SFZ	NPWFS (FRNSW)
172	Hazard Reduction	Undertake works in Burnwood Reserve SFZ	NPWFS (FRNSW)
173	Hazard Reduction	Undertake works in Burnwood Reserve SFZ	NPWFS (FRNSW)
174	Hazard Reduction	Undertake works in Burnwood Reserve SFZ	NPWFS (FRNSW)
175	Hazard Reduction	Undertake works in Burnwood Reserve SFZ	NPWFS (FRNSW)
176	Hazard Reduction	Undertake works in Burnwood Reserve SFZ	NPWFS (FRNSW)
177	Hazard Reduction	Undertake works in Burnwood Reserve SFZ	NPWFS (FRNSW)
178	Hazard Reduction	Undertake works in Burnwood Reserve SFZ	NPWFS (FRNSW)
179	Hazard Reduction	Undertake works in Burnwood Reserve SFZ	NPWFS (FRNSW)
180	Hazard Reduction	Undertake works in Burnwood Reserve SFZ	NPWFS (FRNSW)
181	Hazard Reduction	Undertake works in Burnwood Reserve SFZ	NPWFS (FRNSW)
182	Hazard Reduction	Undertake works in Burnwood Reserve SFZ	NPWFS (FRNSW)
183	Hazard Reduction	Undertake works in Burnwood Reserve SFZ	NPWFS (FRNSW)
184	Hazard Reduction	Undertake works in Burnwood Reserve SFZ	NPWFS (FRNSW)
185	Hazard Reduction	Undertake works in Burnwood Reserve SFZ	NPWFS (FRNSW)
186	Hazard Reduction	Undertake works in Burnwood Reserve SFZ	NPWFS (FRNSW)
187	Hazard Reduction	Undertake works in Burnwood Reserve SFZ	NPWFS (FRNSW)
188	Hazard Reduction	Undertake works in Burnwood Reserve SFZ	NPWFS (FRNSW)
189	Hazard Reduction	Undertake works in Burnwood Reserve SFZ	NPWFS (FRNSW)
190	Hazard Reduction	Undertake works in Burnwood Reserve SFZ	NPWFS (FRNSW)
191	Hazard Reduction	Undertake works in Burnwood Reserve SFZ	NPWFS (FRNSW)
192	Hazard Reduction	Undertake works in Burnwood Reserve SFZ	NPWFS (FRNSW)
193	Hazard Reduction	Undertake works in Burnwood Reserve SFZ	NPWFS (FRNSW)
194	Hazard Reduction	Undertake works in Burnwood Reserve SFZ	NPWFS (FRNSW)
195	Hazard Reduction	Undertake works in Burnwood Reserve SFZ	NPWFS (FRNSW)
196	Hazard Reduction	Undertake works in Burnwood Reserve SFZ	NPWFS (FRNSW)
197	Hazard Reduction	Undertake works in Burnwood Reserve SFZ	NPWFS (FRNSW)
198	Hazard Reduction	Undertake works in Burnwood Reserve SFZ	NPWFS (FRNSW)
199	Hazard Reduction	Undertake works in Burnwood Reserve SFZ	NPWFS (FRNSW)
200	Hazard Reduction	Undertake works in Burnwood Reserve SFZ	NPWFS (FRNSW)

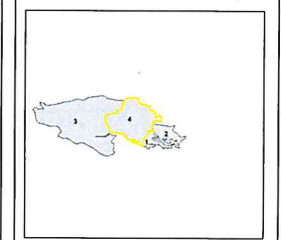
Map Ref	Asset name	Asset type	Subtype	Risk level	Priority	Treatment
4	Bassett Road	Human	Residential	Extreme	1B	(1)
5	Beaconsfield North Park	Human	Residential	Extreme	1B	(2)
6	Leach Cove Four Yearly Park	Human	Special Fire	Extreme	1B	(3)
7	Connaught Road	Human	Residential	Extreme	1B	(4)
8	Ryde Hospital	Human	Special Fire	Extreme	1B	178.28
9	De Burgh Cottages	Human	Residential	Extreme	1B	171.22.23
10	Electricity Transmission Lines	Economic	Infrastructure	Extreme	1B	(5)
11	Clunban Road Residents	Human	Residential	Extreme	1B	178.28
12	Marsfield Park	Human	Residential	Extreme	1B	140
NA	Porters Creek Bridge	Cultural	Non	Very High	2A	174
17	St Thomas Primary School	Human	Special Fire	Very High	2A	177.29
18	Maitland Primary School	Human	Special Fire	Very High	2A	177.29
19	Australian Red Cross	Economic	Infrastructure	Very High	2A	174
20	Wicks Road Waste Transfer Station	Economic	Commercial	Very High	2A	157
21	Four Avenue - Residential	Human	Residential	Very High	2A	157
24	Riverside Corporate Park	Economic	Commercial	Very High	2A	174.85
25	Parramatta Electrical Sub Station	Economic	Infrastructure	Very High	2A	168.51
26	Tony Creek - Residential	Human	Residential	Very High	2A	171.80.58
27	New Hazards	Economic	Commercial	Very High	2A	149
28	Field of Mars Residential 2	Human	Residential	Very High	2A	141.89.58
29	Barton Reserve Residential	Human	Residential	Very High	2A	174.80.58
30	Denmore Park - Residential	Human	Residential	Very High	2A	174.80.58
31	Brush Farm Park - Residential 1	Human	Residential	Very High	2A	173
32	Brush Farm Park Residential 2	Human	Residential	Very High	2A	173
33	Field of Mars Residential 1	Human	Residential	Very High	2A	174.80.58
34	CFRPO Substation Laboratory	Economic	Infrastructure	Very High	2A	175
40	Sydney Water Facility	Economic	Infrastructure	Very High	2A	174
NA	Riding for the Disabled (RDG)	Economic	Tourist and	High	3A	170
53	Tobin Sub Station	Economic	Infrastructure	High	3A	171
53	Edy Creek - Residential	Human	Residential	High	3A	171
54	Darvall Park - Residential	Human	Residential	High	3A	168.80.58
55	Myak Reserve - Residential	Human	Residential	High	3A	168.79
56	Rangerie Picnic Area	Economic	Tourist and	High	3A	171
58	Eden Garden Retail Centre	Economic	Commercial	High	3A	174.77
60	Northwood Cemetery	Cultural	Non	High	3A	167
61	Northwood PTA Club	Economic	Commercial	High	3A	167
62	Northwood Recreation	Human	Residential	High	3A	172.85
63	Field of Mars Cemetery	Cultural	Non	High	3A	171.84.84
64	Field of Mars Environmental Education	Human	Special Fire	High	3A	174.83
65	Turkey Hill Picnic Area	Economic	Tourist and	High	3A	177.54
66	Scrubby Gum Picnic Area	Economic	Tourist and	High	3A	174.79
67	Communal Bush Picnic Area	Economic	Tourist and	High	3A	174
68	Colwood Glen Picnic Area	Economic	Tourist and	High	3A	174
69	Carvers Creek Picnic Area	Economic	Tourist and	High	3A	174.80
70	Macleay Picnic Area	Economic	Tourist and	High	3A	171
71	Bears and Blue Wren Picnic Area	Economic	Tourist and	High	3A	171.74
72	Leach Cove Picnic Area	Economic	Tourist and	High	3A	171
73	Northwood Sports Centre	Cultural	Non	High	3A	174.81
74	Charles Park	Economic	Tourist and	High	3A	174.80
77	Wendover Park Residential	Human	Residential	High	3A	178.88
78	Eastwood Quade Hall	Economic	Tourist and	High	3A	170
88	East Ryde Public School	Human	Special Fire	High	3C	174.107
91	Ryde Secondary College	Human	Special Fire	High	3C	1107.105
97	Brush Farm Park Sports Facilities	Economic	Tourist and	Medium	4	174.84
98	M2 Obvise & Toll points	Economic	Infrastructure	Medium	4	1110.118
99	Fairfarms	Economic	Tourist and	Medium	4	177
102	Ryde SE	Human	Special Fire	Medium	4	1111
103	Macleay Park	Economic	Tourist and	Medium	4	1111
104	De Burgh Cottages	Human	Special Fire	Medium	4	1111
106	De Burgh Cottages	Economic	Tourist and	Medium	4	1114.115
107	Supergrid Capacity	Economic	Tourist and	Medium	4	1122
108	Sydney Water compound Row Area	Economic	Infrastructure	Medium	4	174
124	Ryde Bus Depot	Economic	Commercial	Medium	4	1111
125	East Ryde School Hall	Economic	Tourist and	Medium	4	1117
128	Barrmore Park Residential	Human	Residential	Low	NA	(1)
131	Macleay University Sports Centre	Economic	Tourist and	Low	NA	1131
132	Brush Farm Bowling Club	Economic	Commercial	Low	NA	1134
133	Scrubby Gum picnic area	Economic	Tourist and	Low	NA	1125
134	Edy Creek Picnic Area	Human	Special Fire	Low	NA	1120
143	M2 - Connaught Motorway Shopping	Human	Other	Low	NA	1120
144	M2 - Maitland Park	Human	Other	Low	NA	1120

This Bush Fire Risk Management Plan (BFRMP) has been prepared by the Hunters Hill, Lane Cove, Parramatta, Ryde Bush Fire Management Committee (BFMC) pursuant to section 12 of the Rural Fire Act 2001.

The aim of this BFRMP is to reduce the adverse impact of bush fires on life, property and the environment.

The objectives of this BFRMP are:

- reduce the number of human-caused bush fire incidents that cause damage to life, property and the environment;
- manage land to reduce the spread and intensity of bush fires while minimising environmental impacts;
- reduce the community's vulnerability to bush fires by improving its preparedness; and
- effectively contain fires with a potential to cause damage to life, property and the environment.



Under the Rural Fire Act 2001 this plan must be reviewed and updated within each review cycle and approved by the BFMC. The BFMC will also review this plan as required by the Rural Fire Act 2001. This plan may be updated by the BFMC in response to changes in the risk assessment process.

Under the Rural Fire Act 2001 this plan must be reviewed and updated within each review cycle and approved by the BFMC. The BFMC will also review this plan as required by the Rural Fire Act 2001. This plan may be updated by the