

Hume Zone Bush Fire Management Committee

Bush Fire Risk Management Plan

Table of Contents

<i>Chapter 1. Introduction</i>	7
1.1 Background	7
1.2 Aim and Objectives	7
1.3 Description of the Hume Zone BFMC Area	8
1.3.1 Location and land tenure	8
1.3.2 Climate and bush fire season	8
1.3.3 Population	8
1.3.4 History of bush fire frequency and ignition cause	8
<i>Chapter 2. Identifying and Assessing the Bush Fire Risk</i>	10
2.1 Process	10
2.2 Communication and Consultation	10
2.3 Identifying the Bush Fire Risk	11
2.3.1 Assets	11
2.3.2 Assessing the Bush Fire Risk - Consequence	12
2.3.3 Assessing the Bush Fire Risk - Likelihood	13
2.3.4 Identifying the level of risk	13
2.3.5 Evaluating the Bush Fire Risk	13
2.3.6 Prioritising Treatments	13
2.3.7 Risk Acceptability	13
<i>Chapter 3. Treating the Risk</i>	14
3.1 Bush Fire Management Zones	14
3.2 BFMC Wide Treatments	15
3.3 Asset Specific Treatments	17
3.4 Annual Works Programs	18
3.5 Implementation	18
<i>Chapter 4. Performance Monitoring and Reviewing</i>	19
4.1 Review	19
4.2 Monitoring	19
4.3 Reporting	19
4.4 Performance Measurements	19
<i>Appendix 1 Community Participation Strategy</i>	20
<i>Appendix 2 Asset Register</i>	20
<i>Appendix 3 Treatment Register</i>	20
<i>Appendix 4 - Maps</i>	20

List of Tables

<i>Table 1.1 Land Tenure</i>	8
<i>Table 3.1 Bush Fire Management Zones: Purpose, objectives and characteristics</i>	15
<i>Table 3.2 Asset specific treatments used in the Hume Zone BFMC area</i>	17
<i>Table 3.3 Fire Thresholds for Vegetation Categories</i>	18

List of Figures

<i>Figure 2.1 Overview of the risk assessment process.....</i>	10
--	----

Authorisation

In accordance with Part 3 Division 4 of the Rural Fires Act 1997, this Plan has been prepared by the Hume Zone Bush Fire Management Committee (BFMC) and has been endorsed at the Hume Zone BFMC meeting on 28 July 2016 for submission to the Bush Fire Coordinating Committee.

Recommended



Chairperson
Hume Zone Bush Fire Management Committee

Approved



On behalf of the
NSW Bush Fire Coordinating Committee

Amendment List

Amendment		Entered	
Number	Date	Signature	Date

Glossary

Assets: anything valued by the community which includes houses, crops, heritage buildings and places, infrastructure, the environment, businesses, and forests, that may be at risk from bush fire.

Bush Fire: a general term used to describe fire in vegetation, includes grass fire.

Bush Fire Hazard: the potential severity of a bush fire, which is determined by fuel load, fuel arrangement and topography under a given climatic condition.

Bush Fire Risk: the chance of a bush fire igniting, spreading and causing damage to the community or the assets they value.

Bush Fire Risk Management: a systematic process that provides a range of treatments which contribute to the well being of communities and the environment, which suffer the adverse effects of wildfire/bush fire.

Bush Fire Threat: potential bush fire exposure of an asset due to the proximity and type of a hazard and the slope on which the hazard is situated.

Consequence: outcome or impact of a bush fire event.

Fire Fighting Authorities: the NSW Rural Fire Service, Fire Rescue NSW, National Parks and Wildlife Service and Forests NSW.

Likelihood: the chance of a bush fire igniting and spreading.

Major Bush Fire: A bush fire which requires the attendance of multiple brigades, or causes damage to property or injury to one or more persons.

Display area: geographic area determined by the Bush Fire Management Committee which is used to provide a suitable area and scale for community participation and mapping display purposes.

Recovery costs: the capacity of an asset to recover from the impacts of a bush fire.

Risk Acceptance: an informed decision to accept the consequences and the likelihood of a particular risk.

Risk Analysis: a systematic process to understand the nature of and to reduce the level of risk.

Risk Assessment: the overall process of risk identification, risk analysis and risk evaluation.

Risk Identification: the process of determining what, where, when, why, and how something could happen.

Risk Treatment: the process of selection and implementation of measures to modify risk.

Vulnerability: the susceptibility of an asset to the impacts of bush fire.

Chapter 1. Introduction

1.1 Background

Under the *Rural Fires Act 1997* the Bush Fire Coordinating Committee (BFCC) must constitute a Bush Fire Management Committee (BFMC) for each area in the State, which is subject to the risk of bush fires. Each BFMC is required to prepare and submit to the BFCC a draft Bush Fire Risk Management Plan (BFRMP).

A BFRMP is a strategic document that identifies community assets at risk and sets out a five-year program of coordinated multi-agency treatments to reduce the risk of bush fire to the assets. Treatments may include such things as hazard reduction burning, grazing, community education, fire trail maintenance and establishing community fireguard groups.

Annual programs to implement the treatments identified in this plan will be undertaken by the relevant land managers and fire fighting authorities.

In exercising its functions under the *Rural Fires Act 1997*, including the preparation of a draft bush fire risk management plan, the Hume Zone BFMC is required to have regard to the principles of ecologically sustainable development (ESD).

This document and the accompanying maps together form the BFRMP for the Hume Zone BFMC area.

This BFRMP has been prepared by the Hume Zone BFMC and covers both public and private lands. This BFRMP must be reviewed and updated within each successive five-year period from the constitution of the BFMC.

The BFCC recognises that climate change has the potential to increase bush fire risk. The risk assessment process applied in this BFRMP is based on current climatic conditions. The BFCC will monitor information on climate change and will modify the process when necessary.

1.2 Aim and Objectives

The **aim** of this BFRMP is to minimise the risk of adverse impact of bush fires on life, property and the environment.

The **objectives** of this BFRMP are to:

- reduce the number of human-induced bush fire ignitions that cause damage to life, property and the environment;
- manage fuel to reduce the rate of spread and intensity of bush fires, while minimising environmental/ecological impacts;
- reduce the community's vulnerability to bush fires by improving its preparedness; and
- effectively contain fires with a potential to cause damage to life, property and the environment.

1.3 Description of the Hume Zone BFMC Area

1.3.1 Location and land tenure

The Hume Zone BFMC area is located on the southern border of New South Wales. It includes the Local Government area/s of Albury City and Greater Hume Shire.

The area covered by the Hume Zone BFMC is 6152 sq kilometres and includes the land tenures outlined in Table 1.1.

Land Manager	% of BFMC area
National Parks & Wildlife Service	5.44
Forests NSW	3.28
Department of Lands	3.80
Local Government	1.54
Private	85.94

Table 1.1 Land Tenure

1.3.2 Climate and bush fire season

The climate in the Hume Zone BFMC area is warm to hot during the summer period of November to March. During the summer, dry storms producing lightning frequently occur. Winters tend to experience higher rainfall and lower temperatures.

The bush fire season generally runs from November to March.

Prevailing weather conditions associated with the bush fire season in the Hume Zone BFMC area are north-westerly winds accompanied by high daytime temperatures and low relative humidity. There are also dry lightning storms occurring during the bush fire season in areas across the district, many being recorded around the softwood plantations and National Park in the east of the zone.

1.3.3 Population

The population of the Hume Zone BFMC area is approximately 57,112 people. The major population centres are Albury, Holbrook, Culcairn and Henty.

1.3.4 History of bush fire frequency and ignition cause

The Hume Zone BFMC area has on average 50 bush fires per year, of which very few can be considered to be major fires.

The main sources of ignition in the Hume Zone BFMC area are:

- Escapes from legal burning off
- Lightning
- Farm machinery
- Travelling public
- Trains
- Incendiarism

Escapes from legal burning off, lightning and equipment use remain the top three causes of bush fire in the zone. These are mainly confined to rural areas.

Lightning activity in the Zone is mainly associated with late spring and summer thunderstorm activity, which is normally (but not always) accompanied by rainfall.

Farm machinery activity early in the summer when cereal crops are being harvested often produce outbreaks of fire across the Zone. Many haystack fires have also been experienced in recent years that appear associated with the unusual rainfall pattern.

Incendiarism continues as a trend, and is most common in the grassland and forested areas adjacent to townships, particularly the suburbs of Albury. Areas of high incidence have been identified by the BFMC.

The main Melbourne to Sydney railway line passes through the Zone and has been a known ignition source in the past decade.

The Hume, Riverina and Olympic Highways pass through the Zone with a number of recorded ignitions occurring each year.

Chapter 2. Identifying and Assessing the Bush Fire Risk

2.1 Process

The Australia/New Zealand Standard *AS/NZS 4360: 2004 Risk Management* was used as the basis for the risk assessment process. See Figure 2.1 for the steps involved. For a detailed description of the process undertaken see the Bush Fire Risk Management Planning Guidelines for Bush Fire Management Committees on the RFS website: www.rfs.nsw.gov.au.

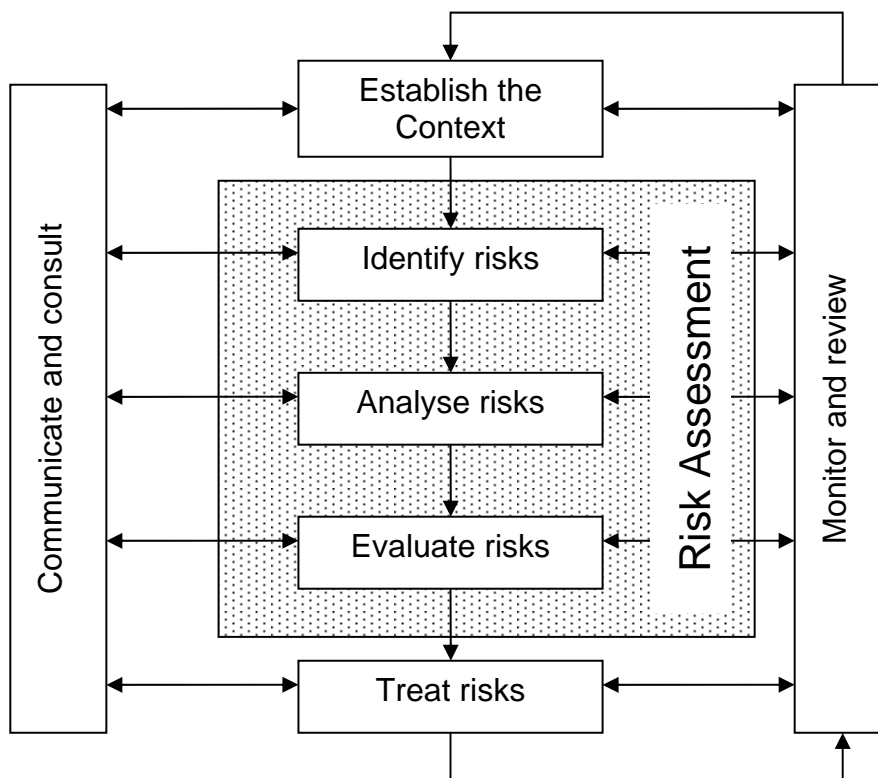


Figure 2.1 Overview of the risk assessment process

2.2 Communication and Consultation

Community participation is an integral part of risk management. The Community Participation Strategy involved developing and implementing a process to address the needs, issues and concerns of stakeholders within the BFMC area in regards to the BFRMP. See Appendix 1 for the Community Participation Strategy used by the Hume Zone BFMC in preparing this BFRMP.

2.3 Identifying the Bush Fire Risk

Determining the level of bush fire risk firstly involved identifying important community assets considered to be at risk from bush fire in the Hume Zone BFMC area, and then assessing the likelihood and consequence ratings.

2.3.1 Assets

BFMC members and the community, including RFS volunteers, identified assets within the Hume Zone BFMC that they believed were at risk of bush fire.

The assets were divided into four asset types:

Human settlement

- Residential areas including urban bushland interface areas and rural properties;
- Special Fire Protection areas including schools, hospitals, nursing homes, and tourist facilities; and
- Other human settlement areas including commercial and industrial areas where distinct from major towns.
- Neighbourhood Safer Places (NSP) are defined by the *Rural Fires Act 1997* as *land or a building designated as a neighbourhood safer place under section 62C*. NSPs provide a place of last resort for people during a bush fire. All designated NSP locations for NSW are available at www.rfs.nsw.gov.au.

Economic

- Agricultural; e.g. major silos, regional saleyards, cropping/grazing land;
- Commercial/industrial e.g. major industries, waste treatment plants, sawmills;
- Infrastructure e.g. large power lines, gas and oil pipelines, railway lines, electricity substations, communication facilities;
- Tourist and recreational e.g. tourist sites and facilities, resorts, retreats;
- Mines;
- Commercial forests e.g. pine plantations, eucalypt plantations and commercial native forests; and
- Drinking water catchments.

Environmental

- Threatened species, populations and ecological communities and Ramsar wetlands;
- Locally important species and ecological communities, such as species and ecological communities especially sensitive to fire.

Cultural

- Aboriginal significance – Aboriginal places and items of significance;
- Non-indigenous heritage – places and items arising from the early occupation of NSW by European or other non-indigenous settlers; and
- Other cultural assets – community halls, clubs and recreational facilities.

See Appendix 2 for the full list of assets identified in the Hume Zone BFMC area. See attached maps for the location of assets to be treated under this BFRMP.

2.3.2 Assessing the Bush Fire Risk - Consequence

Once the assets were identified, the consequence of a bush fire impacting on these assets was assessed.

See Appendix 2 for the consequence ratings assigned to each asset identified in the Hume Zone BFMC area.

The different asset types had different assessment processes used to determine the consequence. These processes are identified below.

Human settlement

A potential fire behaviour model using vegetation type, slope and separation distance was used to produce a threat rating for human settlement assets. The vulnerability of the asset to a bush fire was also assessed and a rating assigned. These ratings were then used to assess the consequence of a bush fire impacting upon a human settlement asset.

Special Fire Protection (SFP) assets were considered inherently more vulnerable to bush fire due to mobility capacity, knowledge or other issues relating to their inhabitants, (e.g. the elderly, infirm, children or tourists) and therefore stricter requirements for vulnerability assessment and rating were applied. Due to circumstances surrounding NSPs and their use during a bush fire, stricter requirements for vulnerability assessment and rating will also apply to these assets.

Economic

The level of economic impact e.g. local, regional or state, as well as the economic recovery costs (how long and complicated a financial recovery will be) of the asset were identified. These ratings were used to assess the consequence of a bush fire impacting upon an economic asset.

Environmental

Environmental assets with known minimum fire threshold were assessed to determine if they were at risk of a bush fire within the 5 year life of the BFRMP using fire history data. Those environmental assets which were within or above the fire threshold were not assessed in the BFRMP, as the negative impact of a fire within the 5 year period was determined as being low and may even be of benefit to the asset and surrounding habitat.

The vulnerability of an environmental asset was determined by its conservation status and its geographic extent (distribution across the landscape). Vulnerability and potential impact of bush fire were used to assess the consequence of a bush fire impacting upon an environmental asset.

Cultural

For non-indigenous historical, Aboriginal and other cultural assets a potential fire behaviour model using fuel load, slope and proximity was used to produce a threat rating.

The physical vulnerability of the asset to a bush fire was also assessed. These ratings were then used to assess the consequence of a bush fire impacting upon a cultural asset.

2.3.3 Assessing the Bush Fire Risk - Likelihood

For all asset types the likelihood of a bush fire occurring was assessed. This involves considering fire history, including ignition cause and patterns, known fire paths, access, containment potential and potential fire run (size of the vegetated area). See Appendix 2 for the likelihood ratings assigned to each asset identified in the Hume Zone BFMC area.

2.3.4 Identifying the level of risk

The consequence and likelihood ratings were then used to identify the level of risk. See Appendix 2 for the risk ratings assigned to each asset identified in the Hume Zone BFMC area.

2.3.5 Evaluating the Bush Fire Risk

Once the risk ratings for each asset were identified, they were evaluated to:

- a) confirm that risk levels identified in the risk analysis process are appropriate and reflect the relative seriousness of the bush fire risk;
- b) identify which assets require treatments; and
- c) identify treatment priorities.

2.3.6 Prioritising Treatments

No organisation has limitless resources to deal with adverse risk. It is therefore necessary to define priorities. The bush fire risk ratings determined were used to prioritise the risk treatments, i.e. areas of extreme risk were considered first for treatment, then very high, then high then medium then low.

2.3.7 Risk Acceptability

Risks below a certain level were assessed as not requiring treatment within the life of this plan. This is due to a combination of risk priority and capacity to undertake the works. Within the Hume Zone BFMC area the level of acceptability is high. Areas of high, medium or low risk are likely to be managed by routine procedures and so do not require a specific application of resources.

All NSPs for a BFMC area will require ongoing treatment by the applicable land owner to ensure that the asset remains viable as a place of last resort for people during a bush fire. Therefore, all NSP assets are allocated specific treatments in this Plan, regardless of the level of bush fire risk identified and the risk acceptability nominated by the Hume Zone BFMC.

Some areas of High Risk have been assigned treatments, treatments will be prioritised accordingly.

Chapter 3. Treating the Risk

3.1 Bush Fire Management Zones

Bush Fire Management Zones were identified within the Hume Zone BFMC area and are mapped. These zones identify the fire management intent for a specific area. See Table 3.1 for descriptions of the zones and their purposes. The four categories of Bush Fire Management Zones are:

- Asset Protection Zone (APZ);
- Strategic Fire Advantage Zone (SFAZ);
- Land Management Zone (LMZ); and
- Fire Exclusion Zone (FEZ).

The above zones have been developed to assist with the protection of economic, residential or special fire protection premises, or control the run of fire across the district.

Zone	Purpose	Suppression Objective(s)	Zone characteristics
Asset Protection Zone	To protect human life, property and highly valued public assets and values.	To enable the safe use of Direct Attack suppression strategies within the zone. To minimise bush fire impacts on undefended assets.	As per RFS document <i>Standards for Asset Protection Zones</i> .
Strategic Fire Advantage Zone	To provide strategic areas of fire protection advantage which will reduce the speed and intensity of bush fires, and reduce the potential for spot fire development; To aid containment of wildfires to existing management boundaries.	To improve the likelihood and safe use of: Parallel Attack suppression strategies within the zone. and/or Indirect Attack (back burning) in high to very high fire weather conditions within the zone. To reduce the likelihood of: Crown fire development within the zone. and/or Spot fire ignition potential from the zone	Zone width related to suppression objectives and dependent upon: <ul style="list-style-type: none"> • Topography • Aspect • Spotting propensity • Location of adjacent firebreaks • Mosaic pattern of treatment Assess Overall Fuel Hazard (OFH) once vegetation communities reach minimum fire thresholds within this plan. Management practices should aim to achieve mosaic fuel reduction patterns so that the majority of the SFAZ has an OFH of less than high.
Land Management Zone	To meet relevant land management objectives in areas where APZs or SFAZs are not appropriate.	As per the land management and fire protection objectives of the responsible land management agency. To reduce the likelihood of spread of fires. To undertake mosaic burning.	As appropriate to achieve land management e.g. heritage and/or fire protection e.g. broad scale mosaic burning objectives.

Fire Exclusion Zone	To exclude bush fires.	N/A	Variable dependant on size of fire sensitive area requiring protection.
----------------------------	------------------------	-----	---

Table 3.1 Bush Fire Management Zones: Purpose, objectives and characteristics

NB: OFH refers to the Overall Fuel Hazard Guide as described in the document published by (Dept. of Sustainability and Environment 3rd ed. 1999 & NPWS version); State-wide procedures for assessment of fuel hazard will be developed in conjunction with the BFCC.

Note: All areas that are not mapped or described as APZs, SFAZs are considered as LMZs within the Hume Zone.

For the purpose of the Bush Fire Environmental Assessment Code:

1. Plantations that are approved under the *Plantations & Reafforestation Act 1999* after closure of the public exhibition period for this BFRMP are considered to be identified in this BFRMP; and
2. Retained vegetation within the aforementioned plantations is considered to be a Strategic Fire Advantage Zone identified in the text of this BFRMP as long as it meets the suppression objectives for SFAZs included in the BFRMP, and is not mapped or otherwise described as a Fire Exclusion Zone in the BFRMP.

3.2 BFMC Wide Treatments

BFMC wide treatments are activities which reduce the overall bush fire risk within the BFMC area and are undertaken on an ongoing basis as part of normal business. These treatments are not linked to specific assets in the BFRMP, rather they are applied across all or part of the BFMC area as designated by legislation or agency policy. BFMC wide treatments include the following:

- **Reviewing the bush fire prone land map**
These maps identify bush fire prone land and are used to trigger whether a development application is assessed using *Planning for Bush Fire Protection*¹.
- **Ensuring developments in bush fire prone land comply with *Planning for Bush Fire Protection***
This assessment process requires new applications for development to include bush fire protection measures.
- **Using the Local Environment Plan/s (LEPs) to control developments in areas with a bush fire risk**
LEPs can be used to exclude development in extreme bush fire risk areas or where bush fire protection measures cannot be incorporated.
- **Varying the standard bush fire danger period as required**

¹ NSW Rural Fire Service 2006 *Planning for Bush Fire Protection: A guide for councils, planners, fire authorities and developers.*

In years where the weather is particularly adverse the bush fire danger period may be brought in early or extended. This is assessed every year by the BFMC.

- **Requiring permits during the bush fire danger period**

In the bush fire danger period a fire safety permit is required to light a fire in the open. Permits specify conditions such as fire fighting equipment that must be on site, or restrict burns based on weather conditions.

- **Prosecution of arsonists/offenders**

Under the *Rural Fires Act 1997* persons may be prosecuted for breaching the conditions on a fire permit, lighting a fire during a Total Fire Ban, allowing fire to escape their property, or other breaches of the Act.

- **Investigation of bush fire cause**

All bush fires which do not have a known cause are investigated to identify how they started.

- **Normal fire suppression activities**

Responding to bush fire is a normal business activity for the fire fighting authorities.

- **Assessing and managing compliance with strategic fire fighting resource allocation provisions**

Strategic fire fighting resource allocation provisions is the process used to identify the number of stations, brigades and appliances required in an area, and considers members, training, assets and hazards.

- **Preparation of a S52 Operations Coordination Plan**

The Operations Coordination Plan is prepared biannually and sets out how coordinated fire fighting will occur. It includes specific operational restrictions on fire fighting techniques in certain areas, where fires will be managed from, and how agencies involved can communicate during operations.

- **Fire Management Plans or Plans of Management**

Several land management agencies have developed fire management plans or plans of management with specific fire or fuel management strategies, for example a Forests NSW Regional Fuel Management Risk Plan, a NPWS Reserve Fire Management Strategy. These publicly exhibited plans form the basis for operational fire planning on public parks, reserves and forests.

- **Bush Fire Hazard Complaints**

If someone is concerned about possible bush fire hazards on a neighbouring property or any other land, then this can be reported to the RFS Commissioner or their local RFS Fire Control Centre. The complaint will be investigated and may result in a notice being issued to the landowner or manager to reduce the hazard.

- **Grazing**

Land use in many areas adjacent to rural development is predominantly grazing and mixed farming. The BFMC recognises that the agricultural practice of grazing has a reduction on available fuel loads during summer.

3.3 Asset Specific Treatments

There are five broad strategy groups available to treat the bush fire risk to assets identified in the BFRMP.

The types of asset specific treatments in each strategy group used in the Hume Zone BFMC area are listed below. A full list of the treatment strategies in the Hume Zone BFMC area are in Appendix 3.

Strategy	Targeted treatments used in the Hume Zone BFMC area
Ignition Management	Use of Permits and regulation for periods when burning is permitted. Restrict access to high risk areas during summer. Fire tower and patrol activities.
Hazard Reduction	A program of burning or other hazard reduction utilised across public and private lands, concentrating initially on APZ's and SFAZ's
Community Education	Conducted in areas highlighted as more at risk. School program conducted in rural schools.
Property Planning	Develop Community Pre-incident Plans Ensure SFP's have Emergency Fire Plans suitable for bush fire events Use of CFU's and NSP's Development and planning in association with the LEP for BFPL Retrofit structures
Preparedness	Construct or maintain fire trails

Table 3.2 Asset specific treatments used in the Hume Zone BFMC area

Vegetation formation	Minimum SFAZ Threshold	Minimum LMZ Threshold	Maximum Threshold	Notes
Rainforest	NA	NA	NA	Fire should be avoided.
Alpine complex	NA	NA	NA	Fire should be avoided.
Wet Sclerophyll forest (shrubby subformation)	25	30	60	Crown fires should be avoided in the lower end of the interval range.
Wet Sclerophyll forest (grassy subformation)	10	15	50	Crown fires should be avoided in the lower end of the interval range.
Grassy woodland	5	8	40	Minimum interval of 10 years should apply in the southern Tablelands area. Occasional intervals greater than 15 years may be desirable.
Grassland	2	3	10	Occasional intervals greater than 7 years should be included in coastal areas. There was insufficient data to give a maximum interval; available evidence indicates maximum intervals should be approximately 10 years.

Dry sclerophyll forest (shrub/grass subformation)	5	8	50	Occasional intervals greater than 25 years may be desirable.
Dry sclerophyll forest (shrub subformation)	7	10	30	Occasional intervals greater than 25 years may be desirable.
Heathlands	7	10	30	Occasional intervals greater than 20 years may be desirable.
Freshwater wetlands	6	10	35	Occasional intervals greater than 30 years may be desirable.
Forested wetlands	7	10	35	Some intervals greater than 20 years may be desirable.
Saline wetlands	NA	NA	NA	Fire should be avoided.
Semi-arid woodlands (grassy subformation)	6	9	No max	Not enough data for a maximum fire interval.
Semi-arid woodlands (shrubby subformation)	10	15	No Max	Not enough data for a maximum fire interval.
Arid shrublands (chenopod subformation)	NA	NA	NA	Fire should be avoided.
Arid shrublands (acacia subformation)	10	15	No Max	Not enough data for a maximum fire interval.

Table 3.3 Fire Thresholds for Vegetation Categories

3.4 Annual Works Programs

The land management agencies and fire fighting authorities responsible for implementing the treatments identified in this plan will include those treatments in their annual works programs detailing how, when, and where the required activities will be undertaken.

3.5 Implementation

When the treatments identified in this BFRMP are implemented there are a number of issues that need to be considered by the responsible agency including environmental assessments and approvals, smoke management and prescribed burn plans.

Chapter 4. Performance Monitoring and Reviewing

4.1 Review

This BFRMP must be reviewed and updated within each successive five-year period from the constitution of the BFMC. The Hume Zone BFMC will also review this plan as necessary to account for any changes in context or risk. This may be triggered by a range of circumstances, including but not limited to:

- changes to the BFMC area, organisational responsibilities or legislation;
- changes to the bush fire risk in the area; or
- following a major fire event.

4.2 Monitoring

The BFMC is required to monitor progress towards the completion of treatment works listed in the BFRMP, and the timeliness of the works.

4.3 Reporting

The BFMC is required to report annually to the BFCC on its progress in implementing the bush fire risk management activities identified in this plan.

4.4 Performance Measurements

State wide performance measurements which are linked to the BFRMP have been identified by the BFCC. All BFMCs must use these to monitor and report on their success in reducing the bush fire risk in their BFMC area.

Appendices

Appendix 1 Community Participation Strategy

Community Participation Strategy

Appendix 2 Asset Register

Assets Assessed

Appendix 3 Treatment Register

Treatments Assigned

Appendix 4 - Maps

Hume Zone East

Hume Zone West

Hume Zone Time since Fire

Hume Zone Fire Threshold

Appendix 1 Community Participation Strategy

Background

The Hume Zone Bush Fire Management Committee (BFMC) is made up of stakeholders that have a requirement to manage land within the jurisdiction of the BFMC area.

Each of those stakeholders have a requirement to have representation on the BFMC and to report to the BFMC the works undertaken to reduce the risk of fire across the area the BFMC is responsible for.

The BFMC must produce a plan, or update an existing plan, which deals with risk management. This plan maps assets, which are then assigned a risk level. The plan also determines which risks the BFMC area has the ability to treat. Treatments are assigned to assets accordingly.

A Bush Fire Risk Management Plan (BFRMP) needs to be acceptable to the communities that the plan area covers. To assist with this process, under statutory requirements, the BFRMP must be placed on Public Exhibition for 40 days. A Communications Strategy is also required to ensure the widest range of members within the community have access to and opportunity to comment on, the plan.

Strategy

All members of the BFMC have a requirement to advertise the BFRMP within the realm of the capabilities of their organisation. Not all member organisations of the BFMC area have a capacity to connect with the community, or are even present in a local sense, within the plan area.

As such, dissemination of information is often left to the lead land management agencies and the NSW RFS. The NSW RFS are often responsible for the administration associated with production of the document and ensuring it is placed on public exhibition in strategic locations.

Types of Exhibition available within the Hume Zone

Public Exhibition of hard copy documents:

- Albury City Council and Greater Hume Shire and the Southern Border Team (SBT) Fire Control Centre displayed hard copy maps and provided copies of the written document for the period of the public exhibition. Greater Hume Shire Council (GHSC) provided four outlets, Holbrook, Henty, Culcairn and Jindera.

Websites

- Both Albury City and GHSC have functional and highly visited web sites. The BFRMP was placed on both of these websites for the duration of the public exhibition period.

Facebook

- Facebook is now a vital source of information for the general public. Albury City, GHSC and SBT all have active Facebook pages and the plan was highlighted on these throughout the public exhibition phase.

Media

- A Media release was sent to all local media outlets highlighting the exhibition of the BFRMP. Several slots in local news were broadcast on the BFRMP (3).
- Albury City and GHSC placed in Public Notices in the Border Mail newspaper information on the BFRMP, the exhibition process and the locations of the hard copy documents.

Public Meetings

- All brigades (38) within the SBT area hold their annual general meetings between June and August. The BFRMP was displayed and discussed at these meetings.
- The BFRMP was also given exposure at other meetings across the district where this was appropriate (council meetings, community forums, RFS meetings of executive)

The Hume Zone BFRMP was placed on public exhibition between 13 May and 28 June 2016.

The Plan received two submissions following the exhibition process.

The BFRMP was submitted to the BFCC on 20 October 2016.

APPENDIX 1

COMMUNITY PARTICIPATION STRATEGY

DATE	EVENT	TARGET GROUP	Location	Key Purpose	No.Att
25-Feb-16	Senior Management Team Meeting	Group Officers Hume	Howlong Community Centre	Explain need for update	17
5-Apr-16	Group 3 Post season meeting	Group 3 Members	Brocklesby Hall	Provide updated information for comment	28
19-Apr-16	Hume Zone BFMC	BFMC members	Albury FCC	Provide additional information and update	16
19-Apr-16	Group 4 Post-season Meeting	Group 4 members	Table Top station	Provide information on changes to BFRMP	48
6-May-16	Border Mail Newspaper notification	General Public	Widespread	Provide information on Public Exhibition	N/A
13-May-16	Albury City Website	General Public	Widespread	Plans for comment	N/A
13-May-16	Greater Hume Shire Council Website	General Public	Widespread	Plans for comment	N/A
13-May-16	Albury City Council Office	General Public	Albury	Plans for comment	N/A
13-May-16	Greater Hume Shire Council Offices	General Public	Culcairn/Holbrook/Jindera	Plans for comment	N/A
26-July-2016	Lavington Brigade AGM	Brigade members	Lavington Station	Provide opportunity for feedback on changes	22
07-August-2016	Splitters Creek Brigade AGM	Brigade members	Splitters Community Centre	Provide opportunity for feedback on changes	33
14-August-2016	Table Top Brigade AGM	Brigade members	Burma Road, Table Top	Provide opportunity for feedback on changes	30
30-August-2016	Thurgoona Brigade AGM	Brigade members	Thurgoona station	Provide opportunity for feedback on changes	42
03-August-2016	Alma Park Brigade AGM	Brigade members	Alma Park Hall	Provide opportunity for feedback on changes	18
27-July-2016	Back Creek Brigade AGM	Brigade members	Innisfail	Provide opportunity for feedback on changes	11
12-July-2016	Bowna Wymah Brigade AGM	Brigade members	Recreation Ground	Provide opportunity for feedback on changes	20
19-July-2016	Brocklesby Brigade AGM	Brigade members	Brocklesby Hall	Provide opportunity for feedback on changes	10
23-August-2016	Bucki Brigade AGM	Brigade members	Bucki station	Provide opportunity for feedback on changes	20
25-September-2016	Bulgandra Brigade AGM	Brigade members	Bulgandra Station	Provide opportunity for feedback on changes	14
18-July-2016	Bungowannah Brigade AGM	Brigade members	Bungowannah Hall	Provide opportunity for feedback on changes	18
20-July-2016	Burrumbuttock Brigade AGM	Brigade members	Burrumbuttock Station	Provide opportunity for feedback on changes	15
23-July-2016	Carabost Brigade AGM	Brigade members	Carabost Hall b'fast 8.30 am	Provide opportunity for feedback on changes	18
05-July-2016	Central Brigade AGM	Brigade members	Central Station	Provide opportunity for feedback on changes	12
09-August-2016	Cookardina Brigade AGM	Brigade members	Cookardina Hall	Provide opportunity for feedback on changes	19
16-July-2016	Culcairn North Brigade AGM	Brigade members	Ponderosa 518 Jennings Road	Provide opportunity for feedback on changes	9
10-August-2016	Culcairn NW Brigade AGM	Brigade members	GHSC Culcairn	Provide opportunity for feedback on changes	8
23-August-2016	Culcairn South Brigade AGM	Brigade members	Morven Hotel	Provide opportunity for feedback on changes	18
27-June-2016	Culcairn SW Brigade AGM	Brigade members	Culcairn Hotel	Provide opportunity for feedback on changes	9
27-July-2016	Garryowen Brigade AGM	Brigade members	Holbrook RS Club	Provide opportunity for feedback on changes	8
13-July-2016	Gerogery Brigade AGM	Brigade members	Gerogery Hall	Provide opportunity for feedback on changes	25
09-August-2016	Glenellen Brigade AGM	Brigade members	St Peter's Lutherna Hall, Glenellen Rd	Provide opportunity for feedback on changes	19
02-August-2016	Goombargana Brigade AGM	Brigade members	Brocklesby Hall	Provide opportunity for feedback on changes	20
31-August-2016	Jindera Brigade AGM	Brigade members	Jindera Station	Provide opportunity for feedback on changes	30
18-August-2016	Jingellic Brigade AGM	Brigade members	Jingellic Station	Provide opportunity for feedback on changes	18
28-July-2016	Lankeys Creek Brigade AGM	Brigade members	Lankeys Creek Hall	Provide opportunity for feedback on changes	11
17-August-2016	Little Billabong Brigade AGM	Brigade members	Little Billabong Station	Provide opportunity for feedback on changes	15
16-August-2016	Merri Meric Brigade AGM	Brigade members	Doodle Cooma Arms, Henty	Provide opportunity for feedback on changes	10
13-August-2016	Morven Brigade AGM	Brigade members	Morven station	Provide opportunity for feedback on changes	8
23-August-2016	Mountain Creek Brigade AGM	Brigade members	Morven Pub	Provide opportunity for feedback on changes	14
14-August-2016	Mt Wagra Brigade AGM	Brigade members	Walden Park 7846 River Road Wymah	Provide opportunity for feedback on changes	14
20-July-2016	Mullengandra Brigade AGM	Brigade members	Mullengandra Hall	Provide opportunity for feedback on changes	17
25-July-2016	Ralvona Brigade AGM	Brigade members	Ralvona Station	Provide opportunity for feedback on changes	12
22-August-2016	Talmalmo Brigade AGM	Brigade members	"Talmalmo" 5078 River Rd, Talmalmo	Provide opportunity for feedback on changes	19
25-July-2016	Walbundrie Brigade AGM	Brigade members	Walbundrie Sports Pavilion	Provide opportunity for feedback on changes	14
03-August-2016	Walla Walla Brigade AGM	Brigade members	Walla Walla station	Provide opportunity for feedback on changes	11
27-July-2016	Wantagong Brigade AGM	Brigade members	Narrabilla, Jingellic Rd, Wantagong	Provide opportunity for feedback on changes	12
14-July-2016	Woomargama Brigade AGM	Brigade members	Woomargama Hall	Provide opportunity for feedback on changes	20

Appendix 2. Asset Register

Map Ref number	Asset Type	Asset Sub Type	Asset Name	Asset Location	LGA	Display area	Likelihood	Consequence	Risk	Priority	Notes	Treatment number
29	Human Settlement	Residential	Monument Hill Interface	Monument Hill, Albury	Albury	Hume Zone West	Likely	Major	Very High	2A		7;8
197	Human Settlement	Residential	Norris Park East	Norris Park, Lavington	Albury	Hume Zone West	Likely	Moderate	High	3A		7;72;66;75
196	Human Settlement	Residential	Norris Park West	Norris Park, Lavington	Albury	Hume Zone West	Likely	Moderate	High	3A		66;60;7;72;75
195	Human Settlement	Residential	Glenroy Interface	Glenroy, Albury	Albury	Hume Zone West	Likely	Moderate	High	3A		60;66;72;75
194	Human Settlement	Residential	Golfview Interface	Golfview Dr, Albury	Albury	Hume Zone West	Likely	Moderate	High	3A		72;66
253	Human Settlement	Residential	Walla Walla Interface	Walla Walla	Greater Hume	Hume Zone West	Likely	Moderate	High	3A		
187	Human Settlement	Residential	Mitchell Park Estate Interface	Mitchell Park, Thurgoona	Albury	Hume Zone East	Likely	Moderate	High	3A		60
193	Human Settlement	Residential	Monument Hill West Interface	Monument Hill, West Albury	Albury	Hume Zone West	Likely	Moderate	High	3A		66;72;60
251	Human Settlement	Residential	Burrumbuttock Interface	Howlong Burrumbuttock Rd, Burrumbuttock	Greater Hume	Hume Zone West	Likely	Moderate	High	3A		66;60
192	Human Settlement	Residential	Doctors Point Interface	Eastern Hill, Albury	Albury	Hume Zone East	Likely	Moderate	High	3A		72;66
28	Human Settlement	Residential	East Albury Interface	East Albury	Albury	Hume Zone East	Likely	Major	Very High	2A		7;36
255	Human Settlement	Residential	Centaur Rd Interface	Centaur Rd, Lavington	Albury	Hume Zone West	Likely	Moderate	High	3A		75
27	Human Settlement	Residential	Hume Weir Village	Hume Weir Village, Lake Hume	Albury	Hume Zone East	Likely	Major	Very High	2A		7;21;28;31
191	Human Settlement	Residential	Thurgoona Park Estate Interface	Thurgoona Park Estate, Thurgoona	Albury	Hume Zone East	Likely	Moderate	High	3A		60
256	Human Settlement	Residential	Urana Rd Interface	Urana Rd, Lavington	Albury	Hume Zone West	Likely	Moderate	High	3A		75
30	Human Settlement	Residential	Yambla Ave Interface	Albury	Albury	Hume Zone West	Likely	Major	Very High	2A		7;35;34;36
247	Human Settlement	Residential	Gerogery Interface 2	Cross St, Gerogery	Greater Hume	Hume Zone West	Likely	Moderate	High	3A		66
84	Human Settlement	Residential	Henty Retirement Village	Rosler St, Henty	Greater Hume	Hume Zone West	Likely	Major	Very High	2A		9;31;29;36
211	Human Settlement	Residential	Sweetwater Road	Sweetwater Rd, Mullengandra	Greater Hume	Hume Zone East	Likely	Moderate	High	3A		
270	Human Settlement	Residential	Gerogery West	Gerogery Rd, Gerogery West	Greater Hume	Hume Zone West	Likely	Moderate	High	3A		60;66
271	Human Settlement	Residential	Gerogery West Estate	Sarah St, Gerogery West	Greater Hume	Hume Zone West	Likely	Moderate	High	3A		
243	Human Settlement	Residential	Yensch's Rd Subdivision	Yensch's Rd, Jingellic	Greater Hume	Hume Zone East	Likely	Moderate	High	3A		24;73;74;35
244	Human Settlement	Residential	Talmalmo NP Interface	River Rd, Talmalmo	Greater Hume	Hume Zone East	Likely	Moderate	High	3A		24;74
198	Human Settlement	Residential	Monument Hill Reserve Interface	Beyers Rd, Albury	Albury	Hume Zone West	Likely	Moderate	High	3A		66;72
246	Human Settlement	Residential	Gerogery Interface 1	West st, Gerogery	Greater Hume	Hume Zone West	Likely	Moderate	High	3A		66
252	Human Settlement	Residential	Jindera Interface	Creek & Jindera St's Jindera	Greater Hume	Hume Zone West	Likely	Moderate	High	3A		66
248	Human Settlement	Residential	Culcairn Interface	Stockroute Rd, Culcairn	Greater Hume	Hume Zone West	Likely	Moderate	High	3A		66
41	Human Settlement	Residential	Henty North Interface	Elm St, Henty	Greater Hume	Hume Zone West	Likely	Major	Very High	2A		9;29;31
249	Human Settlement	Residential	Walbundrie Interface	Billabong St, Walbundrie	Greater Hume	Hume Zone West	Likely	Moderate	High	3A		66;60
201	Human Settlement	Residential	Woomargama Village	Woomargama Way, Holbrook	Greater Hume	Hume Zone East	Likely	Moderate	High	3A		9
250	Human Settlement	Residential	Brocklesby Interface	West St, Brocklesby	Greater Hume	Hume Zone West	Likely	Moderate	High	3A		66
257	Human Settlement	Residential	Central Reserve Road Interface	Central Reserve Rd, Lavington	Greater Hume	Hume Zone West	Likely	Moderate	High	3A		75
245	Human Settlement	Residential	Mt Wagra NP Interface	River Rd, Mt Wagra	Greater Hume	Hume Zone East	Likely	Moderate	High	3A		74;37
176	Human Settlement	Residential	Hamilton Valley Estate	Centaur Rd, Lavington	Albury	Hume Zone West	Likely	Moderate	High	3A		75
267	Human Settlement	Residential	North Lavington Rural Residential	Lyne St, Prune St, Lavington	Albury	Hume Zone West	Likely	Moderate	High	3A		
154	Human Settlement	Residential	West Albury Interface	West Albury	Albury	Hume Zone West	Likely	Moderate	High	3A		66;34;72;75
298	Human Settlement	Residential	Morven Township	Morven, Culcairn Holbrook Rd	Greater Hume	Hume Zone East	Likely	Moderate	High	3A		
266	Human Settlement	Residential	Henty West Interface	Smith St, Henty	Greater Hume	Hume Zone West	Likely	Moderate	High	3A		72;66
88	Human Settlement	Residential	Splitters Creek	Splitters Creek, Albury	Greater Hume	Hume Zone West	Likely	Major	Very High	2A		90;35;77;36

Map Ref number	Asset Type	Asset Sub Type	Asset Name	Asset Location	LGA	Display area	Likelihood	Consequence	Risk	Priority	Notes	Treatment number
20	Human Settlement	Residential	Albury Lifestyle Village	Strauss St & Kemp St, Lavington	Albury	Hume Zone West	Likely	Major	Very High	2A		29;57
178	Human Settlement	Residential	Springdale Heights Interface	Springdale Heights, Albury	Albury	Hume Zone West	Likely	Moderate	High	3A		
24	Human Settlement	Residential	Spring Park Estate	Old Table Top Rd, Thurgoona	Albury	Hume Zone East	Likely	Major	Very High	2A		33;8;35;77
181	Human Settlement	Residential	Lara Lakes Estate	Tynan's Rd, Table Top	Albury	Hume Zone West	Likely	Moderate	High	3A		
182	Human Settlement	Residential	Carisbrook Estate	Tynans Rd, Table Top	Albury	Hume Zone West	Likely	Moderate	High	3A		
183	Human Settlement	Residential	Himalaya Estate	Olympic Way, Table Top	Albury	Hume Zone West	Likely	Moderate	High	3A		76;88
300	Human Settlement	Residential	Holbrook Interface	West Holbrook	Greater Hume	Hume Zone East	Likely	Moderate	High	3A		60;66
402	Human Settlement	Other	Alexandra Park NSP	Keene St, Albury	Albury	Hume Zone East	Unlikely	Moderate	Low	NA		68
264	Human Settlement	Other	Table Top NSP	Burma Rd, Table Top	Albury	Hume Zone East	Likely	Moderate	High	3A		65
405	Human Settlement	Other	Ernest Grant Park NSP	Bogong St, Thurgoona	Albury	Hume Zone East	Unlikely	Moderate	Low	NA		68
404	Human Settlement	Other	Springdale Heights NSP	Cardo Dr, Springdale Heights	Albury	Hume Zone West	Unlikely	Moderate	Low	NA		68
399	Human Settlement	Other	Jindera NSP	Dight St, Jindera	Greater Hume	Hume Zone West	Unlikely	Moderate	Low	NA		68
401	Human Settlement	Other	Bunton Park NSP	Aleman Ave, Nth Albury	Albury	Hume Zone West	Unlikely	Moderate	Low	NA		68
400	Human Settlement	Other	Urana Rd NSP	Urana Rd, Lavington	Albury	Hume Zone West	Unlikely	Moderate	Low	NA		68
408	Human Settlement	Other	Henty NSP	Olympic Highway, Henty	Greater Hume	Hume Zone West	Unlikely	Moderate	Low	NA		68
38	Human Settlement	Other	Tin Mines Camp	Tin Mines Trail, Woomargama National Park	Greater Hume	Hume Zone East	Likely	Major	Very High	2A		89;37;30
407	Human Settlement	Other	Culcairn NSP	Balfour St, Culcairn	Greater Hume	Hume Zone West	Unlikely	Moderate	Low	NA	Within township - only maintenance required to building;	68
259	Human Settlement	Other	Billabong NSP	Little Billabong Rd, Little Billabong	Greater Hume	Hume Zone East	Likely	Moderate	High	3A		63
261	Human Settlement	Other	Lavington Oval NSP	Centaur Rd, Lavington	Albury	Hume Zone West	Unlikely	Moderate	Low	NA		68
403	Human Settlement	Other	QEII Square NSP	Dean St, Albury	Albury	Hume Zone West	Unlikely	Minor	Low	NA		68
260	Human Settlement	Other	Wymah NSP	Wymah Rd, Wymah	Greater Hume	Hume Zone East	Likely	Moderate	High	3A		64
258	Human Settlement	Other	Bungowannah NSP	Ferguson Rd, Bungowannah	Greater Hume	Hume Zone West	Likely	Moderate	High	3A		62
397	Human Settlement	Other	Woomargama NSP	Woomargama	Greater Hume	Hume Zone East	Unlikely	Moderate	Low	NA		69
394	Human Settlement	Other	Burrumbuttock NSP	Urana Rd, Burrumbuttock	Greater Hume	Hume Zone West	Unlikely	Minor	Low	NA		68
396	Human Settlement	Other	Holbrook NSP	Gundagai St, Holbrook	Greater Hume	Hume Zone East	Unlikely	Minor	Low	NA		68
352	Human Settlement	Other	Walbundrie NSP	Urana Rd, Walbundrie	Greater Hume	Hume Zone West	Likely	Minor	Medium	4		67
172	Human Settlement	Other	Splitters Creek Community Centre (NSP)	Splitters Creek Rd, Splitters Creek	Albury	Hume Zone West	Likely	Moderate	High	3A		
40	Human Settlement	Other	Twelve Mile Reserve	Riverina Highway, Bungowannah	Greater Hume	Hume Zone West	Likely	Major	Very High	2A	Managed by RLPB - Campers during summer months	15;41
239	Human Settlement	Other	Pleasure Point	Wymah Rd, Wymah	Greater Hume	Hume Zone East	Likely	Moderate	High	3A		
351	Human Settlement	Other	Brocklesby NSP	Kywong Howlong Rd, Brocklesby	Greater Hume	Hume Zone West	Likely	Minor	Medium	4		68
395	Human Settlement	Other	Walla Walla NSP	William St, Walla Walla	Greater Hume	Hume Zone West	Likely	Minor	Medium	4		68
353	Human Settlement	Other	Morven NSP	Morven Gerogery Rd, Morven	Greater Hume	Hume Zone East	Likely	Minor	Medium	4		68
37	Human Settlement	Special Fire Protection	Mullengandra Public School	Hume Highway, Mullengandra	Greater Hume	Hume Zone East	Likely	Major	Very High	2A		16;54;32;59
337	Human Settlement	Special Fire Protection	Culcairn Public School	Balfour St, Culcairn	Greater Hume	Hume Zone East	Unlikely	Major	Medium	4		70
9	Human Settlement	Special Fire Protection	Jindera Aged Care Facility	Creek St, Jindera	Greater Hume	Hume Zone West	Likely	Major	Very High	2A		9;28;31;58
23	Human Settlement	Special Fire Protection	Table Top Primary School	Burma Rd, Table Top	Albury	Hume Zone East	Likely	Major	Very High	2A		31;32;54;16
325	Human Settlement	Special Fire Protection	Albury Wodonga Private Hospital	Pemberton St, Albury	Albury	Hume Zone West	Unlikely	Major	Medium	4		70
324	Human Settlement	Special Fire	Lutheran Aged Care	Pemberton St, Albury	Albury	Hume Zone West	Unlikely	Major	Medium	4		70

Map Ref number	Asset Type	Asset Sub Type	Asset Name	Asset Location	LGA	Display area	Likelihood	Consequence	Risk	Priority	Notes	Treatment number
		Protection										
13	Human Settlement	Special Fire Protection	Gerogery Public School	Coach Rd, Gerogery	Greater Hume	Hume Zone East	Likely	Major	Very High	2A		8;32;31;54;59
129	Human Settlement	Special Fire Protection	St Mary McKillop Catholic School	Urana Rd, Jindera	Greater Hume	Hume Zone West	Likely	Moderate	High	3A		31;32;1
128	Human Settlement	Special Fire Protection	Greater Hume Child Care Services	Creek St, Jindera	Greater Hume	Hume Zone West	Likely	Moderate	High	3A		31
374	Human Settlement	Special Fire Protection	Jindera Public School	Dight St, Jindera	Greater Hume	Hume Zone West	Unlikely	Moderate	Low	NA		91
339	Human Settlement	Special Fire Protection	Billabong High School	Gordon St, Culcairn	Greater Hume	Hume Zone East	Unlikely	Major	Medium	4		
127	Human Settlement	Special Fire Protection	St John's Lutheran Primary School	Adam St, Jindera	Greater Hume	Hume Zone West	Likely	Moderate	High	3A		31;32;57;1
386	Human Settlement	Special Fire Protection	Border Christian College	Elizabeth Mitchell Dr, Thurgoona	Albury	Hume Zone East	Unlikely	Moderate	Low	NA		
124	Human Settlement	Special Fire Protection	Walla Walla Public School	Commercial St, Walla Walla	Greater Hume	Hume Zone West	Likely	Moderate	High	3A		54;31;32
121	Human Settlement	Special Fire Protection	St Paul's College	Commercial St, Walla Walla	Greater Hume	Hume Zone West	Likely	Moderate	High	3A		31;1
87	Human Settlement	Special Fire Protection	Burrumbuttock Public School	Burrumbuttock Howlong Road, Burrumbuttock	Greater Hume	Hume Zone West	Likely	Major	Very High	2A		16;31;32;54;59
8	Human Settlement	Special Fire Protection	Burrumbuttock Pre-school	Howlong Burrumbuttock Rd, Burrumbuttock	Greater Hume	Hume Zone West	Likely	Major	Very High	2A		16;57;32;31
100	Human Settlement	Special Fire Protection	St Paul's Lutheran School, Henty	Lynne Street, Henty	Greater Hume	Hume Zone West	Likely	Moderate	High	3A		16;61;54
86	Human Settlement	Special Fire Protection	Walbundrie Public School	Walbundrie Road, Walbundrie	Greater Hume	Hume Zone West	Likely	Major	Very High	2A		16;31;32;54;59
85	Human Settlement	Special Fire Protection	Brocklesby Public School	Main Street, Brocklesby	Greater Hume	Hume Zone West	Likely	Major	Very High	2A		9;59;54;31;32
10	Human Settlement	Special Fire Protection	Jindera Pre-school	Jindera St, Jindera	Greater Hume	Hume Zone West	Likely	Major	Very High	2A		58;32;16
338	Human Settlement	Special Fire Protection	Culcairn Early Childhood Centre	Federal St, Culcairn	Greater Hume	Hume Zone East	Unlikely	Major	Medium	4		70
346	Human Settlement	Special Fire Protection	Holbrook Pre-school	Swift St, Holbrook	Greater Hume	Hume Zone East	Unlikely	Major	Medium	4		70
345	Human Settlement	Special Fire Protection	Holbrook Hospital	Bowler St, Holbrook	Greater Hume	Hume Zone East	Unlikely	Major	Medium	4		70
344	Human Settlement	Special Fire Protection	Holbrook Public School	Albury St, Holbrook	Greater Hume	Hume Zone East	Unlikely	Major	Medium	4		70
343	Human Settlement	Special Fire Protection	St Patricks Catholic School	Albury St, Holbrook	Greater Hume	Hume Zone East	Unlikely	Major	Medium	4		70
342	Human Settlement	Special Fire Protection	Holbrook Village Hostel	Bowler St, Holbrook	Greater Hume	Hume Zone East	Unlikely	Major	Medium	4		70
341	Human Settlement	Special Fire Protection	Henty Pre-school	Lynne St, Henty	Greater Hume	Hume Zone West	Unlikely	Major	Medium	4		70
33	Human Settlement	Special Fire Protection	Myoora Hostel	Keighran St. Henty	Greater Hume	Hume Zone West	Likely	Major	Very High	2A		9;29;31;53
185	Human Settlement	Special Fire Protection	National Environmental Centre (Riverina TAFE)	Ettamogah Rd, Thurgoona	Albury	Hume Zone East	Likely	Moderate	High	3A		51;57
340	Human Settlement	Special Fire Protection	Henty Public School	Sladen St, Henty	Greater Hume	Hume Zone West	Unlikely	Major	Medium	4		70
186	Human Settlement	Special Fire Protection	Trinity College	Elizabeth Mitchell Dr, Thurgoona	Albury	Hume Zone East	Likely	Moderate	High	3A		57;1

Map Ref number	Asset Type	Asset Sub Type	Asset Name	Asset Location	LGA	Display area	Likelihood	Consequence	Risk	Priority	Notes	Treatment number
336	Human Settlement	Special Fire Protection	St Josephs Primary School, Culcairn	Blair St, Culcairn	Greater Hume	Hume Zone West	Unlikely	Major	Medium	4		70
335	Human Settlement	Special Fire Protection	Culcairn Hostel	Edward St, Culcairn	Greater Hume	Hume Zone East	Unlikely	Major	Medium	4		70
334	Human Settlement	Special Fire Protection	Culcairn Hospital	Balfour St, Culcairn	Greater Hume	Hume Zone East	Unlikely	Major	Medium	4		70
31	Human Settlement	Special Fire Protection	Riverina Institute of TAFE	Poole St, Albury	Albury	Hume Zone West	Likely	Major	Very High	2A		57;51;9;36;37
333	Human Settlement	Special Fire Protection	Albury Base Hospital	East St, Albury	Albury	Hume Zone East	Unlikely	Major	Medium	4		70
26	Human Settlement	Special Fire Protection	Charles Sturt University, Thurgoona Campus	Elizabeth Mitchell Dr, Thurgoona	Albury	Hume Zone East	Likely	Major	Very High	2A		52
25	Human Settlement	Special Fire Protection	The Grange Aged Care Facility	Thurgoona Dr, Thurgoona	Albury	Hume Zone East	Likely	Major	Very High	2A		58;29
35	Human Settlement	Special Fire Protection	Ferndale Rd Interface	Ferndale Rd, Woomargama	Greater Hume	Hume Zone East	Likely	Major	Very High	2A		35;9;28;37
32	Human Settlement	Special Fire Protection	Henty Hospital	Keighran St, Henty	Greater Hume	Hume Zone West	Likely	Major	Very High	2A		9;29;31;53
368	Economic	Agricultural	Blairs Grain Shed	Victoria St, Walla Walla	Greater Hume	Hume Zone West	Unlikely	Moderate	Low	NA		
169	Economic	Agricultural	Blairs Grain Storage	Urana Rd, Burrumbuttock	Greater Hume	Hume Zone West	Likely	Moderate	High	3A		
131	Economic	Agricultural	Waybet Rise Poultry Farm	Urana Rd, Jindera	Greater Hume	Hume Zone West	Likely	Moderate	High	3A		
311	Economic	Agricultural	Godde's Grain Store	Schnaars Road, Culcairn	Greater Hume	Hume Zone West	Unlikely	Major	Medium	4		
237	Economic	Agricultural	Ashleigh Park Feed Lot	Back Henty Rd, Culcairn	Greater Hume	Hume Zone West	Likely	Moderate	High	3A		
419	Economic	Agricultural	Greasy Grain Silos	Kywong Howlong Rd, Brocklesby	Greater Hume	Hume Zone West	Unlikely	Moderate	Low	NA		
208	Economic	Agricultural	Flyfarne Vineyard	Tunnel Rd, Woomargama	Greater Hume	Hume Zone East	Likely	Moderate	High	3A		
416	Economic	Agricultural	Wetterns Grain Storage	Yankee Crssing Rd, Henty	Greater Hume	Hume Zone East	Unlikely	Moderate	Low	NA		
103	Economic	Agricultural	Henty Feed Lot	Cookardinia Rd, Henty	Greater Hume	Hume Zone East	Likely	Moderate	High	3A		
367	Economic	Agricultural	Walla Walla Oat Mill	Railway St, Walla Walla	Greater Hume	Hume Zone West	Unlikely	Moderate	Low	NA		
238	Economic	Agricultural	Cooper and Ramsden Olives	Splitters Creek Rd, Spliters Creek	Albury	Hume Zone West	Likely	Moderate	High	3A		
308	Economic	Agricultural	Cargills Grain	Grubben Rd, Henty	Greater Hume	Hume Zone West	Likely	Minor	Medium	4		
290	Economic	Agricultural	Jayfields Nursery	180 Clifton Ring Rd, Pulletop	Greater Hume	Hume Zone East	Likely	Moderate	High	3A		
306	Economic	Agricultural	Brocklesby Silo	Olive St, Brocklesby	Greater Hume	Hume Zone West	Likely	Minor	Medium	4		
409	Economic	Agricultural	Blairs Burrum Grain Store	Urana Rd, Burrumbuttock	Greater Hume	Hume Zone West	Unlikely	Moderate	Low	NA		
305	Economic	Agricultural	Ferndale Silo	Ferndale Rd, Bulgandra	Greater Hume	Hume Zone West	Likely	Minor	Medium	4		
11	Economic	Commercial	Jindera Industrial Estate	Urana Rd, Jindera	Greater Hume	Hume Zone West	Likely	Major	Very High	2A		9;17;78
157	Economic	Commercial	Walla Walla Winery	Walla West Rd, Walla Walla	Greater Hume	Hume Zone West	Likely	Moderate	High	3A		
328	Economic	Commercial	Ettamogah Freight Interchange	R W Henry Drive, Ettamogah	Albury	Hume Zone West	Unlikely	Major	Medium	4		
326	Economic	Commercial	Reproductive Medicine Albury	Pemberton St, Albury	Albury	Hume Zone West	Unlikely	Major	Medium	4		
229	Economic	Commercial	Murray Hume Forest Depot	Coppabella Rd, Coppabella	Greater Hume	Hume Zone East	Likely	Moderate	High	3A		
200	Economic	Commercial	Orange Grove Reception Centre	Olympic Highway, Gerogery	Greater Hume	Hume Zone West	Likely	Moderate	High	3A		
16	Economic	Commercial	Riverlea Piggery	Riverina Highway, Bungowannah	Greater Hume	Hume Zone West	Likely	Major	Very High	2A		57
137	Economic	Commercial	Gerogery Post Office and General Store	Main St, Gerogery	Greater Hume	Hume Zone West	Likely	Moderate	High	3A		
297	Economic	Commercial	Bungo Blasting	Bungowannah Rd, Bungowannah	Greater Hume	Hume Zone West	Likely	Moderate	High	3A		
139	Economic	Commercial	Eversons Grain Shed	Olympic Highway, Gerogery	Greater Hume	Hume Zone West	Likely	Moderate	High	3A		
146	Economic	Commercial	Altmeier Vineyard and Cellar Door	Splitters Creek Rd, Spliters Creek	Albury	Hume Zone West	Likely	Moderate	High	3A		
293	Economic	Commercial	Culcairn Bowling Club	Olympic Highway, Culcairn	Greater Hume	Hume Zone West	Likely	Moderate	High	3A		

Map Ref number	Asset Type	Asset Sub Type	Asset Name	Asset Location	LGA	Display area	Likelihood	Consequence	Risk	Priority	Notes	Treatment number
318	Economic	Commercial	Jindera Brick Works	Hueske Rd, Jindera	Greater Hume	Hume Zone West	Unlikely	Major	Medium	4		
415	Economic	Commercial	Kanes Buses	Yankee Crossing Rd, Henty	Greater Hume	Hume Zone East	Unlikely	Moderate	Low	NA		
331	Economic	Commercial	Albury Airport	Airport Dr, Albury	Albury	Hume Zone East	Unlikely	Major	Medium	4		
330	Economic	Commercial	Thurgoona Shopping Centre	Shuter Ave, Thurgoona	Albury	Hume Zone East	Unlikely	Major	Medium	4		
391	Economic	Commercial	Woomargama Hotel & Motel	Woomargama Way, Woomargama	Greater Hume	Hume Zone East	Unlikely	Moderate	Low	NA		
291	Economic	Commercial	Woomargama Post Office	Woomargama Way, Woomargama	Greater Hume	Hume Zone East	Likely	Moderate	High	3A		
413	Economic	Commercial	Bald Hill Quarry	Hume Highway, Holbrook	Greater Hume	Hume Zone East	Unlikely	Moderate	Low	NA		
414	Economic	Commercial	Rockley Falls Quarry	Hume Highway, Holbrook	Greater Hume	Hume Zone East	Unlikely	Moderate	Low	NA		
184	Economic	Commercial	Kinross Hotel	Old Table Top Rd, Thurgoona	Albury	Hume Zone East	Likely	Moderate	High	3A		
418	Economic	Commercial	Boral Quarry	Weeamara Rd, Culcairn	Greater Hume	Hume Zone West	Unlikely	Moderate	Low	NA		
204	Economic	Commercial	GHSC Holbrook Depot	Millswood Rd, Holbrook	Greater Hume	Hume Zone East	Likely	Moderate	High	3A		
296	Economic	Commercial	Ettamogah Pub Complex	Burma Rd, Table Top	Albury	Hume Zone East	Likely	Moderate	High	3A		
206	Economic	Commercial	Holbrook Airpark	Wagga Rd, Holbrook	Greater Hume	Hume Zone East	Likely	Moderate	High	3A		
304	Economic	Commercial	Norske Skog	RW Henry Dr, Ettamogah	Albury	Hume Zone West	Unlikely	Catastrophic	High	3C		
180	Economic	Commercial	Table Top Commercial Precinct	Burma Rd, Table Top	Albury	Hume Zone East	Likely	Moderate	High	3A		
303	Economic	Commercial	BTR Engineering	Kaitlers Rd, Lavington	Albury	Hume Zone West	Unlikely	Catastrophic	High	3C		
294	Economic	Commercial	Caltex Fuel Stop	Olympic Highway, Culcairn	Greater Hume	Hume Zone West	Likely	Moderate	High	3A		
295	Economic	Commercial	Orange Grove Reception Centre	Olympic Highway, Culcairn	Greater Hume	Hume Zone West	Likely	Moderate	High	3A		
218	Economic	Commercial	Lumeah Horse Breeding Centre	Hume Highway, Mullengandrah	Greater Hume	Hume Zone East	Likely	Moderate	High	3A		
347	Economic	Commercial	Holbrook RTA Depot	Albury St, Holbrook	Greater Hume	Hume Zone East	Unlikely	Major	Medium	4		
118	Economic	Commercial	Burrumbuttock Hotel	Urana Road, Burrumbuttock	Greater Hume	Hume Zone West	Likely	Moderate	High	3A		
106	Economic	Commercial	Round Hill Hotel	Brownrigg Street, Morven	Greater Hume	Hume Zone East	Likely	Moderate	High	3A		
102	Economic	Commercial	Henty Machinery Field Day Site	Henty Cookardinia Rd, Henty	Greater Hume	Hume Zone East	Likely	Moderate	High	3A		
134	Economic	Commercial	Gerogery Hotel	Olympic Highway, Gerogery	Greater Hume	Hume Zone West	Likely	Moderate	High	3A		
382	Economic	Commercial	Jindera Hotel & Motel	Urana Rd, Jindera	Greater Hume	Hume Zone West	Unlikely	Moderate	Low	NA		
364	Economic	Commercial	Brocklesby Community Hotel & Post Office	Main Street, Brocklesby	Greater Hume	Hume Zone West	Unlikely	Moderate	Low	NA		
96	Economic	Commercial	Walbundrie Hotel	Billabong Street, Walbundrie	Greater Hume	Hume Zone West	Likely	Moderate	High	3A		
95	Economic	Commercial	Walbundrie Co-op & Post Office	Urana Rd, Walbundrie	Greater Hume	Hume Zone West	Likely	Moderate	High	3A		
7	Economic	Commercial	Geelong Leather	Schnaars Road, Culcairn	Greater Hume	Hume Zone West	Likely	Major	Very High	2A		
109	Economic	Commercial	Greater Hume Shire Works Depot	Back Henty Road, Culcairn	Greater Hume	Hume Zone West	Likely	Moderate	High	3A		
119	Economic	Commercial	Burrumbuttock Post Office & General Store	Urana Rd, Burrumbuttock	Greater Hume	Hume Zone West	Likely	Moderate	High	3A		
312	Economic	Commercial	Kotzurs Silo's	Commercial St, Walla Walla	Greater Hume	Hume Zone West	Unlikely	Major	Medium	4		
369	Economic	Commercial	Blair's Grain & Fertilizer	Commercial Rd, Walla Walla	Greater Hume	Hume Zone West	Unlikely	Moderate	Low	NA		
317	Economic	Commercial	Jindera Shopping Centre	Urana Rd & Creek St, Jindera	Greater Hume	Hume Zone West	Unlikely	Major	Medium	4		
370	Economic	Commercial	Lieschke Motors	Commercial St, Walla Walla	Greater Hume	Hume Zone West	Unlikely	Moderate	Low	NA		
371	Economic	Commercial	Weisner Motors	Commercial St, Walla Walla	Greater Hume	Hume Zone West	Unlikely	Moderate	Low	NA		
123	Economic	Commercial	PJN Sheds	Commercial St, Walla Walla	Greater Hume	Hume Zone West	Likely	Moderate	High	3A		
381	Economic	Commercial	Jindera Rural Produce	Adam ST, Jindera	Greater Hume	Hume Zone West	Unlikely	Moderate	Low	NA		
90	Economic	Commercial	Severin Feed Lot	Fax Vale Road, Goombargana	Greater Hume	Hume Zone West	Likely	Moderate	High	3A		
377	Economic	Commercial	Jindera Post Office	Urana Rd, Jindera	Greater Hume	Hume Zone West	Unlikely	Moderate	Low	NA		
93	Economic	Commercial	Walbundrie Grain Storage	Kidston Street, Walbundrie	Greater Hume	Hume Zone West	Likely	Moderate	High	3A		
378	Economic	Commercial	Jindera Newsagent & Take-away	Urana Rd, Jindera	Greater Hume	Hume Zone West	Unlikely	Moderate	Low	NA		
417	Economic	Infrastructure	Henty Mobile Phone Tower	Yankee Crossing Rd, Henty	Greater Hume	Hume Zone East	Unlikely	Minor	Low	NA		
5	Economic	Infrastructure	Peddles Hill Communication Site	Ross Road, Henty	Greater Hume	Hume Zone East	Likely	Major	Very High	2A		35
199	Economic	Infrastructure	Culcairn Waste Site	Schnaars Rd, Culcairn	Greater Hume	Hume Zone West	Likely	Moderate	High	3A		
101	Economic	Infrastructure	Henty Field Day Telephone Tower	Lubkes Road, Henty	Greater Hume	Hume Zone East	Likely	Moderate	High	3A		

Map Ref number	Asset Type	Asset Sub Type	Asset Name	Asset Location	LGA	Display area	Likelihood	Consequence	Risk	Priority	Notes	Treatment number
332	Economic	Infrastructure	Albury Waterworks	Waterworks Rd, Albury	Albury	Hume Zone East	Unlikely	Major	Medium	4		
307	Economic	Infrastructure	Henty Sewerage Treatment Works	Smith Street, Henty	Greater Hume	Hume Zone West	Likely	Minor	Medium	4		
302	Economic	Infrastructure	Gas Pipeline	Across District	Greater Hume	Hume Zone East	Possible	Major	High	3B		
289	Economic	Infrastructure	Coppabella Telephone Exchange	Four Mile Lane, Lankeys Creek	Greater Hume	Hume Zone East	Likely	Moderate	High	3A		
366	Economic	Infrastructure	Brocklesby Telephone Exchange	Main Street, Brocklesby	Greater Hume	Hume Zone West	Unlikely	Moderate	Low	NA		
97	Economic	Infrastructure	Walbundrie Pump Station	Walbundrie Road, Walbundrie	Greater Hume	Hume Zone West	Likely	Moderate	High	3A		
94	Economic	Infrastructure	Walbundrie Telephone Exchange	Urana Rd, Walbundrie	Greater Hume	Hume Zone West	Likely	Moderate	High	3A		
104	Economic	Infrastructure	Cookardinia Telephone Exchange	Wagga Rd, Cookardinia	Greater Hume	Hume Zone East	Likely	Moderate	High	3A		
91	Economic	Infrastructure	Alma Park Telephone Exchange	Shoemarks Road, Alma Park	Greater Hume	Hume Zone West	Likely	Moderate	High	3A		
92	Economic	Infrastructure	Wallandool Telephone Exchange	Munyaplah Settlement Road, Munyaplah	Greater Hume	Hume Zone West	Likely	Moderate	High	3A		
15	Economic	Infrastructure	Goombargana Hill Communications Site	Daysdale Rd, Goombargana	Greater Hume	Hume Zone West	Likely	Major	Very High	2A		8;35
171	Economic	Infrastructure	Bungowannah Telephone Exchange	Methodist Rd, Bungowannah	Greater Hume	Hume Zone West	Likely	Moderate	High	3A		
380	Economic	Infrastructure	Jindera Telephone Exchange	Urana Rd, Jindera	Greater Hume	Hume Zone West	Unlikely	Moderate	Low	NA		
12	Economic	Infrastructure	Lindner Road Electrical Sub-station	Lindner Rd, Jindera	Greater Hume	Hume Zone West	Likely	Major	Very High	2A		22
136	Economic	Infrastructure	Gerogery Telephone Exchange	Main St, Gerogery	Greater Hume	Hume Zone West	Likely	Moderate	High	3A		
125	Economic	Infrastructure	Jindera Sewerage Works	Drumwood Rd, Jindera	Greater Hume	Hume Zone West	Likely	Moderate	High	3A		
14	Economic	Infrastructure	Mt Locah Communications Site	Yambla Range, Gerogery	Greater Hume	Hume Zone East	Likely	Major	Very High	2A		37;8
17	Economic	Infrastructure	Albury Sewerage	Riverina Highway, Albury	Albury	Hume Zone West	Likely	Major	Very High	2A	Incorporates some pine forest in joint venture with State Forest	7;17;55;9
18	Economic	Infrastructure	Gas Pipeline Valve	Jindera Walla Rd, Walla Walla	Greater Hume	Hume Zone West	Likely	Major	Very High	2A		23;48
163	Economic	Infrastructure	Gerogery West Telephone Exchange	Glenellen Rd, Gerogery West	Greater Hume	Hume Zone West	Likely	Moderate	High	3A		
145	Economic	Infrastructure	Splitters Creek Pump Station	Delaware Rd, Splitters Creek	Albury	Hume Zone West	Likely	Moderate	High	3A		
170	Economic	Infrastructure	Burrumbuttock Telephone Exchange	Burrumbuttock Howlong Rd, Burrumbuttock	Greater Hume	Hume Zone West	Likely	Moderate	High	3A		
362	Economic	Infrastructure	Gasline Pumping Station	Yankee Crossing Rd, Henty	Greater Hume	Hume Zone East	Unlikely	Major	Medium	4		
113	Economic	Infrastructure	Culcairn Sewerage Treatment Works	Baird St, Culcairn	Greater Hume	Hume Zone East	Likely	Moderate	High	3A		
19	Economic	Infrastructure	Albury Waste Transfer Station	Centaur Rd, Lavington	Albury	Hume Zone West	Likely	Major	Very High	2A		7;55;36;9
6	Economic	Infrastructure	Gas Metering Station	Walbundrie Road, Culcairn	Greater Hume	Hume Zone West	Likely	Major	Very High	2A		23;48
112	Economic	Infrastructure	Riverina Water Red Creek Pumping Station	Cummings Road, Culcairn	Greater Hume	Hume Zone West	Likely	Moderate	High	3A		
111	Economic	Infrastructure	Water Aeration Plant	Water Works Rd, Culcairn	Greater Hume	Hume Zone East	Likely	Moderate	High	3A		
108	Economic	Infrastructure	Major's Creek Water Pumping Station	Calool Lane, Culcairn	Greater Hume	Hume Zone East	Likely	Moderate	High	3A		
363	Economic	Infrastructure	Henty Refuse Station	Henty Pleasant Hills Rd, Henty	Greater Hume	Hume Zone West	Likely	Minor	Medium	4		
21	Economic	Infrastructure	One Tree Hill Communications Site	Shaw St, Lavington	Albury	Hume Zone West	Likely	Major	Very High	2A		8;35;56
309	Economic	Infrastructure	Morven Telephone Exchange	Culcairn Holbrook Road, Morven	Greater Hume	Hume Zone East	Likely	Minor	Medium	4		
310	Economic	Infrastructure	Culcairn Refuse Station	Schnaars Road, Culcairn	Greater Hume	Hume Zone West	Likely	Minor	Medium	4		
254	Economic	Infrastructure	Urana Rd/Lockhart Rd	Across District	Greater Hume	Hume Zone West	Likely	Moderate	High	3A		

Map Ref number	Asset Type	Asset Sub Type	Asset Name	Asset Location	LGA	Display area	Likelihood	Consequence	Risk	Priority	Notes	Treatment number
422	Economic	Infrastructure	Wirlinga Ordinance Depot	Riverina Highway, Wirlinga	Albury	Hume Zone East	Likely	Major	Very High	2A		94
202	Economic	Infrastructure	Trans Grid High Voltage Power Lines	Across District	Greater Hume	Hume Zone West	Likely	Moderate	High	3A		
34	Economic	Infrastructure	Riverina Water Sub-station	Ralvona Rd, Ralvona	Greater Hume	Hume Zone East	Likely	Major	Very High	2A		21;46
207	Economic	Infrastructure	Garryowen Telephone Exchange	Hume Freeway, Garryowen	Greater Hume	Hume Zone East	Likely	Moderate	High	3A		
221	Economic	Infrastructure	Wymah Telephone Exchange	Wymah Rd, Wymah	Greater Hume	Hume Zone East	Likely	Moderate	High	3A		
348	Economic	Infrastructure	Garryowen Telephone Tower	Cromer Hill, Garryowen	Greater Hume	Hume Zone East	Likely	Minor	Medium	4		
54	Economic	Infrastructure	Hume Freeway	Across District	Greater Hume	Hume Zone East	Likely	Major	Very High	2A		11
223	Economic	Infrastructure	Talmalmo Telephone Exchange	River Rd, Talmalmo	Greater Hume	Hume Zone East	Likely	Moderate	High	3A		
52	Economic	Infrastructure	Riverina Highway	Across District	Greater Hume	Hume Zone West	Likely	Major	Very High	2A		11
39	Economic	Infrastructure	Jingellic Communications Site	Tower Trail, Woomargama NP	Greater Hume	Hume Zone East	Likely	Major	Very High	2A		8;37;6;24
209	Economic	Infrastructure	Mountain Creek Telephone Exchange	Mountain Creek Rd, Mountain Creek	Greater Hume	Hume Zone East	Likely	Moderate	High	3A		
36	Economic	Infrastructure	Mt McKenzie Communications Site	Woomargama	Greater Hume	Hume Zone East	Likely	Major	Very High	2A		8;35
53	Economic	Infrastructure	Olympic Highway	Across district	Greater Hume	Hume Zone West	Likely	Major	Very High	2A		11
393	Economic	Infrastructure	Woomargama Telephone Exchange	Woomargama Way, Woomargama	Greater Hume	Hume Zone East	Unlikely	Moderate	Low	NA		
214	Economic	Infrastructure	Wymah Ferry	Wymah Ferry Rd, Wymah	Greater Hume	Hume Zone East	Likely	Moderate	High	3A		
55	Economic	Infrastructure	Sydney Melbourne Rail Corridor	Across District	Greater Hume	Hume Zone East	Likely	Major	Very High	2A		12
232	Economic	Infrastructure	Billabong Telephone Exchange	Little Billabong Rd, Little Billabong	Greater Hume	Hume Zone East	Likely	Moderate	High	3A		
235	Economic	Infrastructure	Carabost Telephone Exchange	Tumbarumba Rd, Carabost	Greater Hume	Hume Zone East	Likely	Moderate	High	3A		
219	Economic	Infrastructure	Bowna Telephone Exchange	Wymah Rd, Bowna	Greater Hume	Hume Zone East	Likely	Moderate	High	3A		
236	Economic	Infrastructure	Little Billabong Telephone Tower	Hillside, Little Billabong	Greater Hume	Hume Zone East	Likely	Moderate	High	3A		
226	Economic	Tourist and Recreational	Lankey's Creek Hall	Jingellic Rd, Lankeys Creek	Greater Hume	Hume Zone East	Likely	Moderate	High	3A		
190	Economic	Tourist and Recreational	Thurgoona Tennis Centre	Thurgoona Dr, Thurgoona	Albury	Hume Zone East	Likely	Moderate	High	3A		
126	Economic	Tourist and Recreational	Jindera Golf Club	Brumwood Rd, Jindera	Greater Hume	Hume Zone West	Likely	Moderate	High	3A		
327	Economic	Tourist and Recreational	Albury Archery Club	Urana Rd, Lavington	Albury	Hume Zone West	Likely	Minor	Medium	4		
292	Economic	Tourist and Recreational	Henty Sportsground	Grubben Rd, Henty	Greater Hume	Hume Zone West	Likely	Moderate	High	3A		
316	Economic	Tourist and Recreational	Jindera Pioneer Museum	Urana Rd, Jindera	Greater Hume	Hume Zone West	Unlikely	Major	Medium	4		
212	Economic	Tourist and Recreational	Mullengandra Hall	Bowna Rd, Mullengandra	Greater Hume	Hume Zone East	Likely	Moderate	High	3A		
174	Economic	Tourist and Recreational	Hume Pistol Club	Urana Rd, Lavington	Albury	Hume Zone West	Likely	Moderate	High	3A		
361	Economic	Tourist and Recreational	Chalmers Presbyterian Church	Meyers Rd, Cookardinia	Greater Hume	Hume Zone East	Likely	Minor	Medium	4		
175	Economic	Tourist and Recreational	Panthers Sports Complex	Centaur Rd, Lavington	Albury	Hume Zone West	Likely	Moderate	High	3A		
117	Economic	Tourist and	Burrumbuttock Hall	Urana Rd, Burrumbuttock	Greater Hume	Hume Zone West	Likely	Moderate	High	3A		

Map Ref number	Asset Type	Asset Sub Type	Asset Name	Asset Location	LGA	Display area	Likelihood	Consequence	Risk	Priority	Notes	Treatment number
		Recreational										
140	Economic	Tourist and Recreational	Table Top Homestead Motel	Burma Rd, Table Top	Albury	Hume Zone East	Likely	Moderate	High	3A		
151	Economic	Tourist and Recreational	Bunns Air	Riverina Highway, Bungowannah	Greater Hume	Hume Zone West	Likely	Moderate	High	3A		
234	Economic	Tourist and Recreational	Carabost Hall	Tumburarumba Rd, Carabost	Greater Hume	Hume Zone East	Likely	Moderate	High	3A		
230	Economic	Tourist and Recreational	Glenfalloch Farm Stay	Four Mile Lane, Billabong	Greater Hume	Hume Zone East	Likely	Moderate	High	3A		
153	Economic	Tourist and Recreational	Wonga Wetlands	Riverina Highway, Albury	Albury	Hume Zone West	Likely	Moderate	High	3A		
138	Economic	Tourist and Recreational	Gerogery Hall	Main St, Gerogery	Greater Hume	Hume Zone West	Likely	Moderate	High	3A		
114	Economic	Tourist and Recreational	Culcairn Sports Ground	Federal Street, Culcairn	Greater Hume	Hume Zone East	Likely	Moderate	High	3A		
110	Economic	Tourist and Recreational	Culcairn Golf Club	Culcairn Holbrook Rd, Culcairn	Greater Hume	Hume Zone East	Likely	Moderate	High	3A		
115	Economic	Tourist and Recreational	Wirramina Nature Centre	Burrumbuttock Howlong Rd, Burrumbuttock	Greater Hume	Hume Zone West	Likely	Moderate	High	3A		
188	Economic	Tourist and Recreational	Thurgoona Sports Ground	Table Top Rd, Thurgoona	Albury	Hume Zone East	Likely	Moderate	High	3A		
116	Economic	Tourist and Recreational	Burrumbuttock Sports Ground	Burrumbuttock Howlong Rd, Burrumbuttock	Greater Hume	Hume Zone West	Likely	Moderate	High	3A		
89	Economic	Tourist and Recreational	Alma Park Hall	Alma Park Road, Alma Park	Greater Hume	Hume Zone West	Likely	Moderate	High	3A		
105	Economic	Tourist and Recreational	Cookardinia Hall	Wagga Rd, Cookardinia	Greater Hume	Hume Zone East	Likely	Moderate	High	3A		
372	Economic	Tourist and Recreational	Rural Transaction Centre	Commercial St, Walla Walla	Greater Hume	Hume Zone West	Unlikely	Moderate	Low	NA		
373	Economic	Tourist and Recreational	Walla Walla Bowling Club	Commercial St, Walla Walla	Greater Hume	Hume Zone West	Unlikely	Moderate	Low	NA		
314	Economic	Tourist and Recreational	Gerogery West Tennis Club	Glenellen Rd, Gerogery West	Greater Hume	Hume Zone West	Likely	Minor	Medium	4		
179	Economic	Tourist and Recreational	Table Top Hall	Burma Rd, Table Top	Albury	Hume Zone East	Likely	Moderate	High	3A		
189	Economic	Tourist and Recreational	Thurgoona Golf Club	Thurgoona Dr, Thurgoona	Albury	Hume Zone East	Likely	Moderate	High	3A		
299	Economic	Tourist and Recreational	Walbundrie Public Hall	Lockhart Road, Walbundrie	Greater Hume	Hume Zone West	Likely	Moderate	High	3A		
1	Economic	Commercial Forest	State Forest	Carabost, Little Billabong, Lankeys Creek	Greater Hume	Hume Zone East	Likely	Catastrophic	Extreme	1B		6;2;3;4;5
57	Economic	Commercial Forest	Snowy Mountains Forests	Carabost, Little Billabong, Lankeys Creek	Greater Hume	Hume Zone East	Likely	Major	Very High	2A	Formerly Murray River Forests, taken over by Snowy Mountains Forests	26;39;44;19
22	Economic	Commercial Forest	Norske Skog Pine Plantation	Hume Highway, Tble Top	Albury	Hume Zone East	Likely	Major	Very High	2A		
58	Economic	Commercial Forest	Hume Forest Plantations	Carabost, Billabong, Lankeys Creek	Greater Hume	Hume Zone East	Likely	Major	Very High	2A		18;25;38;43
56	Economic	Commercial Forest	Snowy Mountains Forests	Carabost, Billabong, Lankeys Creek	Greater Hume	Hume Zone East	Likely	Major	Very High	2A		19;26;39;44
263	Economic	Drinking Water Catchment	Billabong Creek	Across district	Greater Hume	Hume Zone West	Likely	Moderate	High	3A		

Map Ref number	Asset Type	Asset Sub Type	Asset Name	Asset Location	LGA	Display area	Likelihood	Consequence	Risk	Priority	Notes	Treatment number
265	Economic	Drinking Water Catchment	Lake Hume	Wymah, Albury	Greater Hume	Hume Zone East	Likely	Moderate	High	3A		
262	Economic	Drinking Water Catchment	Murray River	Across District	Greater Hume	Hume Zone East	Likely	Moderate	High	3A		
47	Environment	Endangered	Fauna	Woomargama NP	Greater Hume	Hume Zone East	Likely	Major	Very High	2A	Southern Bell Frog - Exclude bushfire; no burning within 100m of streams; no slashing trittering or tree removal.	93
43	Environment	Endangered	Fauna	Carabost	Greater Hume	Hume Zone East	Likely	Major	Very High	2A	Booroolong Frog - Exclude bushfire; no burning within 100m of streams; no slashing trittering or tree removal.	93
44	Environment	Endangered	Fauna	Woomargama National park	Greater Hume	Hume Zone East	Likely	Major	Very High	2A	Southern Bell Frog - Exclude bushfire; no burning within 100m of streams; no slashing trittering or tree removal.	93
51	Environment	Endangered	Fauna	Henty Swamp	Greater Hume	Hume Zone West	Likely	Major	Very High	2A	Bush Stone Curlew - Exclude bushfire; No burning from 1 Aug - 31 March; no more than once every 2 yrs. Retain logs on ground. Slashing in winter but no trittering or tree removal.	93
50	Environment	Endangered	Fauna	Walla Walla Travelling Stock Reserve	Greater Hume	Hume Zone West	Likely	Major	Very High	2A	Bush Stone Curlew - Exclude bushfire; No burning from 1 Aug - 31 March; no more than once every 2 yrs. Retain logs on ground. Slashing in winter but no trittering or tree removal.	93
46	Environment	Endangered	Fauna	Woomargama NP	Greater Hume	Hume Zone East	Likely	Major	Very High	2A	Booroolong Frog - Exclude bushfire; no burning within 100m of streams; no slashing trittering or tree removal.	93
42	Environment	Endangered	Flora	Nail Can Hill	Albury	Hume Zone West	Likely	Major	Very High	2A	Crimson Spider Orchid - Exclude HR; no slashing, trittering or tree removal	93
48	Environment	Endangered	Fauna	Thurgoona	Albury	Hume Zone West	Likely	Major	Very	2A	Southern Bell Frog -	93

Map Ref number	Asset Type	Asset Sub Type	Asset Name	Asset Location	LGA	Display area	Likelihood	Consequence	Risk	Priority	Notes	Treatment number
									High		Exclude bushfire; no burning within 100m of streams; no slashing trittering or tree removal.	
349	Environment	Endangered	Fauna	North Albury	Albury	Hume Zone West	Unlikely	Major	Medium	4	Bush Stone Curlew - Exclude bushfire; No burning from 1 Aug - 31 March; no more than once every 2 yrs. Retain logs on ground. Slashing in winter but no trittering or tree removal.	
350	Environment	Endangered	Fauna	North Albury	Albury	Hume Zone West	Unlikely	Major	Medium	4	Bush Stone Curlew - Exclude bushfire; No burning from 1 Aug - 31 March; no more than once every 2 yrs. Retain logs on ground. Slashing in winter but no trittering or tree removal.	
49	Environment	Endangered	Fauna	Wonga Wetlands	Albury	Hume Zone West	Likely	Major	Very High	2A	Australasian Bittern - Exclude bushfire; no slashing trittering or tree removal.	93
45	Environment	Endangered	Fauna	Woomargama NP	Greater Hume	Hume Zone East	Likely	Major	Very High	2A	Southern Bell Frog - Exclude bushfire; no burning within 100m of streams; no slashing trittering or tree removal.	93
0	Environment	Vulnerable	Fauna	Downfall NR; Benambra NP; Woomargama NP		undefined	Likely	Minor	Medium	4	Squirrel Glider - No slashing, trittering or tree removal	
0	Environment	Vulnerable	Fauna	Woomargama NP		undefined	Likely	Minor	Medium	4	Eastern Pigmy Possom - No slashing, trittering or tree removal	
0	Environment	Vulnerable	Aves	Downfall NR; Benambra NP; Woomargama NP		undefined	Likely	Minor	Medium	4	Diamond Firetail - No slashing, trittering or tree removal	
0	Environment	Vulnerable	Aves	Downfall NR; Benambra NP; Woomargama NP		undefined	Likely	Minor	Medium	4	Speckled Warbler - No slashing, trittering or tree removal	
0	Environment	Vulnerable	Aves	Downfall NR; Wiesners Swamp; Benambra NP; Woomargama NP		undefined	Likely	Minor	Medium	4	Brown Treecreeper - No slashing, trittering or tree removal	
0	Environment	Vulnerable	Aves	Woomargama NP		undefined	Likely	Minor	Medium	4	Powerful Owl - No burning around known nesting sites at any time - No slashing, trittering or tree removal or around	

Map Ref number	Asset Type	Asset Sub Type	Asset Name	Asset Location	LGA	Display area	Likelihood	Consequence	Risk	Priority	Notes	Treatment number
											known nesting sites	
0	Environment	Vulnerable	Aves	Woomargama NP		undefined	Likely	Minor	Medium	4	Grey-crowned babbler - No slashing, trittering or tree removal	
0	Environment	Vulnerable	Fauna	Woomargama NP		undefined	Likely	Minor	Medium	4	Eastern False Pipistrelle - Protect hollows, no tree removal	
0	Environment	Vulnerable	Flora	Weisners Swamp		undefined	Likely	Moderate	High	3A	Floating Swamp Wallaby grass - No fire more than once in 6 yrs; no slashing trittering or tree removal	
0	Environment	Vulnerable	Flora	Benambra, Table Top, Woomargama		undefined	Likely	Moderate	High	3A	Woolly Ragwort - No fire more than once in 10 yrs; no slashing trittering or tree removal	
0	Environment	Vulnerable	Fauna	Woomargama NP		undefined	Likely	Minor	Medium	4	Southern Myoyis - No fire around known roost sites; no tree removal	
0	Environment	Vulnerable	Flora	Woomargama NP		undefined	Likely	Moderate	High	3A	Phantom Wattle - No fire more than once in 10 yrs; no slashing trittering or tree removal	
0	Environment	Vulnerable	Aves	Downfall NR, Woomargama NP		undefined	Likely	Minor	Medium	4	Barking Owl - No burning around known nesting sites at any time - No slashing, trittering or tree removal or around known nesting sites	
274	Cultural	Aboriginal Significance	Aboriginal Artefacts	Bowna	Greater Hume	Hume Zone East	Likely	Moderate	High	3A		
268	Cultural	Aboriginal Significance	Tree Modification	Willamulka	Albury	Hume Zone East	Likely	Moderate	High	3A		
61	Cultural	Aboriginal Significance	Tree Modification	Riversdale Rd	Albury	Hume Zone East	Likely	Major	Very High	2A	Manual clearing and raking only	93
62	Cultural	Aboriginal Significance	Tree modification	Bowna	Albury	Hume Zone East	Likely	Major	Very High	2A	Manual clearing and raking only	93
76	Cultural	Aboriginal Significance	Scarred Tree	Coppabella	Greater Hume	Hume Zone East	Likely	Major	Very High	2A	Manual clearing and raking only	93
75	Cultural	Aboriginal Significance	Tree Modification	Back Creek, Wantigong	Greater Hume	Hume Zone East	Likely	Major	Very High	2A	Manual clearing and raking only	93
73	Cultural	Aboriginal Significance	Tree Modification	Holbrook	Greater Hume	Hume Zone East	Likely	Major	Very High	2A	Manual clearing and raking only	93
72	Cultural	Aboriginal Significance	Tree Modfication	Yarra Yarra	Greater Hume	Hume Zone East	Likely	Major	Very High	2A	Manual clearing and raking only	93
71	Cultural	Aboriginal Significance	Tree Modification	Mullengandra	Greater Hume	Hume Zone East	Likely	Major	Very High	2A	Manual clearing and raking only	93
70	Cultural	Aboriginal	Tree Modification	Woomargama	Greater Hume	Hume Zone East	Likely	Major	Very	2A	Manual clearing and	93

Map Ref number	Asset Type	Asset Sub Type	Asset Name	Asset Location	LGA	Display area	Likelihood	Consequence	Risk	Priority	Notes	Treatment number
		Significance							High		raking only	
69	Cultural	Aboriginal Significance	Tree Modification	12 Mile Reserve	Greater Hume	Hume Zone West	Likely	Major	Very High	2A	Manual clearing and raking only	93
64	Cultural	Aboriginal Significance	Tree modification	Table Top	Albury	Hume Zone West	Likely	Major	Very High	2A	Manual clearing and raking only	93
67	Cultural	Aboriginal Significance	Tree Modification	Dights Hill	Greater Hume	Hume Zone West	Likely	Major	Very High	2A	Manual clearing and raking only	93
63	Cultural	Aboriginal Significance	Tree Modification	Ettamogah	Albury	Hume Zone West	Likely	Major	Very High	2A	Manual clearing and raking only	93
77	Cultural	Aboriginal Significance	Scarred Tree	Coppabella	Greater Hume	Hume Zone East	Likely	Major	Very High	2A	Manual clearing and raking only	93
66	Cultural	Aboriginal Significance	Tree Modification	Jindera	Greater Hume	Hume Zone West	Likely	Major	Very High	2A	Manual clearing and raking only	93
269	Cultural	Aboriginal Significance	Tree Modification	Jindera	Greater Hume	Hume Zone West	Likely	Moderate	High	3A	Manual clearing and raking only	
65	Cultural	Aboriginal Significance	Tree modification	Table Top	Albury	Hume Zone West	Likely	Major	Very High	2A	Manual clearing and raking	93
74	Cultural	Aboriginal Significance	Tree Modification	Little Billabong	Greater Hume	Hume Zone East	Likely	Major	Very High	2A	Manual clearing and raking only	93
4	Cultural	Aboriginal Significance	Tree Modification	Woomargama NP	Greater Hume	Hume Zone East	Likely	Catastrophic	Extreme	1B	Manual clearing and raking only	92
68	Cultural	Aboriginal Significance	Scarred Tree	Wonga Wetlands	Albury	Hume Zone West	Likely	Major	Very High	2A	Manual clearing and raking only	93
285	Cultural	Aboriginal Significance	Aboriginal Artefact	Bungowannah	Greater Hume	Hume Zone West	Likely	Moderate	High	3A		
80	Cultural	Aboriginal Significance	Tree Modification	Billabong Creek	Greater Hume	Hume Zone West	Likely	Major	Very High	2A	Manual clearing and raking only	93
82	Cultural	Aboriginal Significance	Tree Modification	Burrumbuttock	Greater Hume	Hume Zone West	Likely	Major	Very High	2A	Manual clearing and raking only	93
83	Cultural	Aboriginal Significance	Tree Modification	Brae Springs	Greater Hume	Hume Zone West	Likely	Major	Very High	2A	Manual clearing and raking	93
354	Cultural	Aboriginal Significance	Aboriginal Artefacts	Wymah	Greater Hume	Hume Zone East	Likely	Minor	Medium	4		
412	Cultural	Aboriginal Significance	Aboriginal Artefact	Wymah	Greater Hume	Hume Zone East	Unlikely	Minor	Low	NA		
355	Cultural	Aboriginal Significance	Aboriginal Artefacts	Wymah	Greater Hume	Hume Zone East	Likely	Minor	Medium	4		
360	Cultural	Aboriginal Significance	Aboriginal Artefact	Lake Hume	Albury	Hume Zone East	Likely	Minor	Medium	4		
356	Cultural	Aboriginal Significance	Aboriginal Artefacts	Wymah	Greater Hume	Hume Zone East	Likely	Minor	Medium	4		
411	Cultural	Aboriginal Significance	Aboriginal Artefact	Lake Hume	Albury	Hume Zone East	Unlikely	Minor	Low	NA		
359	Cultural	Aboriginal Significance	Aboriginal Artefact	Lake Hume	Albury	Hume Zone East	Likely	Minor	Medium	4		
358	Cultural	Aboriginal Significance	Aboriginal Artefact	Lake Hume	Albury	Hume Zone East	Likely	Minor	Medium	4		
410	Cultural	Aboriginal Significance	Aboriginal Artefact	Lake Hume	Albury	Hume Zone East	Unlikely	Minor	Low	NA		
288	Cultural	Aboriginal Significance	Aboriginal Artefact	Ettamogah	Albury	Hume Zone East	Likely	Moderate	High	3A		
79	Cultural	Aboriginal Significance	Tree Modification	Ashley Park	Greater Hume	Hume Zone West	Likely	Major	Very High	2A	Manual clearing and raking only	93

Map Ref number	Asset Type	Asset Sub Type	Asset Name	Asset Location	LGA	Display area	Likelihood	Consequence	Risk	Priority	Notes	Treatment number
280	Cultural	Aboriginal Significance	Aboriginal Artefact	Walla Walla	Greater Hume	Hume Zone West	Likely	Moderate	High	3A		
357	Cultural	Aboriginal Significance	Aboriginal Artefacts	Bowna	Greater Hume	Hume Zone East	Likely	Minor	Medium	4		
273	Cultural	Aboriginal Significance	Aboriginal Artefacts	Wymah	Greater Hume	Hume Zone East	Likely	Moderate	High	3A		
275	Cultural	Aboriginal Significance	Aboriginal Artefacts	Woomargama NP	Greater Hume	Hume Zone East	Likely	Moderate	High	3A		
276	Cultural	Aboriginal Significance	Aboriginal Artefacts	Woomargama NP	Greater Hume	Hume Zone East	Likely	Moderate	High	3A		
277	Cultural	Aboriginal Significance	Aboriginal Artefact	Hume Freeway	Greater Hume	Hume Zone East	Likely	Moderate	High	3A		
287	Cultural	Aboriginal Significance	Aboriginal Artefact	Thurgoona	Albury	Hume Zone East	Likely	Moderate	High	3A		
279	Cultural	Aboriginal Significance	Aboriginal Artefact	Henty	Greater Hume	Hume Zone West	Likely	Moderate	High	3A		
286	Cultural	Aboriginal Significance	Aboriginal Artefact	Splitters Creek	Greater Hume	Hume Zone West	Likely	Moderate	High	3A		
272	Cultural	Aboriginal Significance	Aboriginal Artefacts	Wymah	Greater Hume	Hume Zone East	Likely	Moderate	High	3A		
281	Cultural	Aboriginal Significance	Aboriginal Artefact	Mountain Creek	Greater Hume	Hume Zone East	Likely	Moderate	High	3A		
282	Cultural	Aboriginal Significance	Aboriginal Artefact	Benambra NP	Greater Hume	Hume Zone East	Likely	Moderate	High	3A		
283	Cultural	Aboriginal Significance	Aboriginal Artefact	Gerogery	Greater Hume	Hume Zone East	Likely	Moderate	High	3A		
284	Cultural	Aboriginal Significance	Aboriginal Artefact	Jindera	Albury	Hume Zone West	Likely	Moderate	High	3A		
81	Cultural	Aboriginal Significance	Tree Modification	Walla Walla	Greater Hume	Hume Zone West	Likely	Major	Very High	2A	Manual clearing and raking only	93
278	Cultural	Aboriginal Significance	Aboriginal Artefact	Olympic Highway	Greater Hume	Hume Zone East	Likely	Moderate	High	3A		
60	Cultural	Aboriginal Significance	Tree modification	Mullengandra, Hume Highway	Greater Hume	Hume Zone East	Likely	Major	Very High	2A	Manual clearing and raking only	93
3	Cultural	Aboriginal Significance	Tree Modification	Mullengandra Nature Reserve	Greater Hume	Hume Zone East	Likely	Catastrophic	Extreme	1B	Manual clearing and raking only	92
78	Cultural	Aboriginal Significance	Tree Modification	Henty Swamp	Greater Hume	Hume Zone West	Likely	Major	Very High	2A	Manual clearing and raking only	93
59	Cultural	Aboriginal Significance	Tree modification	Yellow Creek, Hume Highway	Greater Hume	Hume Zone East	Likely	Major	Very High	2A	Manual clearing and raking only	93
406	Cultural	Aboriginal Significance	Tree Modification	Hume Weir	Greater Hume	Hume Zone East	Unlikely	Moderate	Low	NA		
2	Cultural	Aboriginal Significance	Tree Modification	One Tree Hill	Albury	Hume Zone West	Likely	Catastrophic	Extreme	1B	Manual clearing and raking only	92
301	Cultural	Non Indigenous	Woomargama Station	Tunnel Rd, Woomargama	Greater Hume	Hume Zone East	Likely	Moderate	High	3A		
150	Cultural	Non Indigenous	Bungowannah Church of England	Riverina Highway, Bungowannah	Greater Hume	Hume Zone West	Likely	Moderate	High	3A		
228	Cultural	Non Indigenous	Coppabella Blacksmith Shop	Coppabella Rd, Coppabella	Greater Hume	Hume Zone East	Likely	Moderate	High	3A		
162	Cultural	Non Indigenous	Fernsight Homestead	Walla West Rd, Walla Walla	Greater Hume	Hume Zone West	Likely	Moderate	High	3A		
142	Cultural	Non Indigenous	Morgans Lookout	Lookout Rd, Walla Walla	Greater Hume	Hume Zone West	Likely	Moderate	High	3A		

Map Ref number	Asset Type	Asset Sub Type	Asset Name	Asset Location	LGA	Display area	Likelihood	Consequence	Risk	Priority	Notes	Treatment number
		Indigenous										
107	Cultural	Non Indigenous	Round Hill Hotel	Brownrigg Street, Morven	Greater Hume	Hume Zone East	Likely	Moderate	High	3A		
135	Cultural	Non Indigenous	Gerogery Station Masters House	Coach Rd, Gerogery	Greater Hume	Hume Zone East	Likely	Moderate	High	3A		
156	Cultural	Non Indigenous	Brae Springs Homestead	Jindera Walla Rd, Walla Walla	Greater Hume	Hume Zone West	Likely	Moderate	High	3A		
99	Cultural	Non Indigenous	Goombargana Cemetery	Balldale Walbundrie Road, Goombargana	Greater Hume	Hume Zone West	Likely	Moderate	High	3A		
158	Cultural	Non Indigenous	Hill and Dale Homestead	Burrumbuttock Walla Rd, Walla Walla	Greater Hume	Hume Zone West	Likely	Moderate	High	3A		
132	Cultural	Non Indigenous	Bethel Lutheran Church	Bethel rd, Glenellen	Greater Hume	Hume Zone West	Likely	Moderate	High	3A		
159	Cultural	Non Indigenous	Walla Park Homestead	Lookout Rd, Walla Walla	Greater Hume	Hume Zone West	Likely	Moderate	High	3A		
120	Cultural	Non Indigenous	Holy Cross Lutheran Church	Burrumbuttock Howlong Rd, Burrumbuttock	Greater Hume	Hume Zone West	Likely	Moderate	High	3A		
227	Cultural	Non Indigenous	Cornish Chimney	Millers Rd, Woomargama SF	Greater Hume	Hume Zone East	Likely	Moderate	High	3A		
313	Cultural	Non Indigenous	Zion Lutheran Church	Commercial St, Walla Walla	Greater Hume	Hume Zone West	Likely	Minor	Medium	4		
376	Cultural	Non Indigenous	St Paul's Church of England	Urana Rd, Jindera	Greater Hume	Hume Zone West	Unlikely	Minor	Low	NA		
224	Cultural	Non Indigenous	Dora Dora Hotel	River Road, Talmalmo	Greater Hume	Hume Zone East	Likely	Moderate	High	3A		
164	Cultural	Non Indigenous	Strathdown Homestead	Gerogery Rd, West Gerogery	Greater Hume	Hume Zone West	Likely	Moderate	High	3A		
165	Cultural	Non Indigenous	Hill Top Homestead	Gerogery Rd, West Gerogery	Greater Hume	Hume Zone West	Likely	Moderate	High	3A		
166	Cultural	Non Indigenous	Huondale Homestead	Gerogery Rd, Gerogery	Greater Hume	Hume Zone West	Likely	Moderate	High	3A		
167	Cultural	Non Indigenous	Beelawong Homestead	Beelawong Rd, Gerogery West	Greater Hume	Hume Zone West	Likely	Moderate	High	3A		
168	Cultural	Non Indigenous	Gerogery East Homestead	Coach Rd, Gerogery	Greater Hume	Hume Zone East	Likely	Moderate	High	3A		
161	Cultural	Non Indigenous	Bigger Plains Homestead	Chinatown Lane, Walla Walla	Greater Hume	Hume Zone West	Likely	Moderate	High	3A		
216	Cultural	Non Indigenous	Wymah School	River Rd, Wymah	Greater Hume	Hume Zone East	Likely	Moderate	High	3A		
160	Cultural	Non Indigenous	Merino Park Homestead	Jindera Walla Road, Walla Walla	Greater Hume	Hume Zone West	Likely	Moderate	High	3A		
155	Cultural	Non Indigenous	Green Hill Homestead	Jindera Walla Road, Walla Walla	Greater Hume	Hume Zone West	Likely	Moderate	High	3A		
398	Cultural	Other	Jindera Rural Fire Brigade Station	Urana Rd, Jindera	Greater Hume	Hume Zone West	Unlikely	Minor	Low	NA		
319	Cultural	Other	Walbundrie Catholic Church	Walbundrie Rd, Walbundrie	Greater Hume	Hume Zone West	Likely	Minor	Medium	4		
322	Cultural	Other	Walla Walla Rural Fire Brigade Station	Commercial Rd, Walla Walla	Greater Hume	Hume Zone West	Likely	Minor	Medium	4		
320	Cultural	Other	Walbundrie Uniting Church	Walbundrie Rd, Walbundrie	Greater Hume	Hume Zone West	Likely	Minor	Medium	4		
321	Cultural	Other	Alma Park Lutheran Church	Alma Park Rd, Alma Park	Greater Hume	Hume Zone West	Likely	Minor	Medium	4		
144	Cultural	Other	Holy Cross Lutheran Church	Burrumbuttock Howlong Rd, Burrumbuttock	Greater Hume	Hume Zone West	Likely	Moderate	High	3A		
323	Cultural	Other	Brocklesby Uniting Church	Ellis St, Brocklesby	Greater Hume	Hume Zone West	Likely	Minor	Medium	4		
143	Cultural	Other	Goombargana Baptist Church	Balldale Walbundrie Rd,	Greater Hume	Hume Zone West	Likely	Moderate	High	3A		

Map Ref number	Asset Type	Asset Sub Type	Asset Name	Asset Location	LGA	Display area	Likelihood	Consequence	Risk	Priority	Notes	Treatment number
				Goombargana								
213	Cultural	Other	Mullengandra Rural Fire Brigade Station	Bowna Rd, Mullengandra	Greater Hume	Hume Zone East	Likely	Moderate	High	3A		
233	Cultural	Other	Carabost Rural Fire Brigade Station	Carabost Rd, Carabost	Greater Hume	Hume Zone East	Likely	Moderate	High	3A		
392	Cultural	Other	Little Billabong Rural Fire Brigade Station	Little Billabong Rd, Little Billabong	Greater Hume	Hume Zone East	Unlikely	Moderate	Low	NA		
149	Cultural	Other	Bungowannah Rural Fire Brigade Station	Bungowannah Rd, Bungowannah	Greater Hume	Hume Zone West	Likely	Moderate	High	3A		
385	Cultural	Other	Burrumbuttock Rural Fire Brigade Station	Urana Rd, Burrumbuttock	Greater Hume	Hume Zone West	Unlikely	Minor	Low	NA		
152	Cultural	Other	Landcare Propogation Shed	Breton Rd, Splitters Creek	Albury	Hume Zone West	Likely	Moderate	High	3A		
225	Cultural	Other	Lankey's Creek Rural Fire Brigade Station	Jingellic Rd, Lankeys Creek	Greater Hume	Hume Zone East	Likely	Moderate	High	3A		
222	Cultural	Other	Talmalmo Rural Fire Brigade Station	River Rd, Talmalmo	Greater Hume	Hume Zone East	Likely	Moderate	High	3A		
240	Cultural	Other	Morven Rural Fire Brigade Station	Brownrigg St, Morven	Greater Hume	Hume Zone East	Likely	Moderate	High	3A		
220	Cultural	Other	Bowna Wymah Rural Fire Brigade Station	Wymah Rd, Wymah	Greater Hume	Hume Zone East	Likely	Moderate	High	3A		
133	Cultural	Other	Gerogery Sports Ground	West st, Gerogery	Greater Hume	Hume Zone West	Likely	Moderate	High	3A		
177	Cultural	Other	Lavington Rural Fire Brigade Station	629 Krautz St, Lavington	Albury	Hume Zone West	Likely	Moderate	High	3A		
390	Cultural	Other	Woomargama Rural Fire Brigade Station	Murray St, Woomargama	Greater Hume	Hume Zone East	Unlikely	Minor	Low	NA		
329	Cultural	Other	Table Top Rural Fire Brigade Station	Burma Rd, Table Top	Albury	Hume Zone East	Likely	Minor	Medium	4		
210	Cultural	Other	Mountain Creek Rural Fire Brigade Station	Mountain Creek Rd, Mountain Creek	Greater Hume	Hume Zone East	Likely	Moderate	High	3A		
205	Cultural	Other	Central Rural Fire Brigade Station	Millswood Rd, Holbrook	Greater Hume	Hume Zone East	Likely	Moderate	High	3A		
203	Cultural	Other	Ralvona Rural Fire Brigade Station	Ralvona Rd, Ralvona	Greater Hume	Hume Zone East	Likely	Moderate	High	3A		
387	Cultural	Other	Thurgoona Rural Fire Brigade Station	RSD Wells Ave	Albury	Hume Zone East	Unlikely	Minor	Low	NA		
173	Cultural	Other	Splitters Creek Rural Fire Brigade Station	Splitters Creek Rd, Splitters Creek	Albury	Hume Zone West	Likely	Moderate	High	3A		
379	Cultural	Other	Bethlehem Lutheran Church	Adam St, Jindera	Greater Hume	Hume Zone West	Unlikely	Minor	Low	NA		
241	Cultural	Other	Morven Church of England	Brownrigg Rd, Morven	Greater Hume	Hume Zone East	Likely	Moderate	High	3A		
421	Cultural	Other	Jindera School of Arts/Hall	Urana Rd, Jindera	Albury	Hume Zone West	Unlikely	Minor	Low	NA		
242	Cultural	Other	Woomargama Anglican Church	Hay St, Woomargama	Greater Hume	Hume Zone East	Likely	Moderate	High	3A		
383	Cultural	Other	Jindera Tennis Club	Urana Rd, Jindera	Greater Hume	Hume Zone West	Unlikely	Minor	Low	NA		
130	Cultural	Other	St Mary McKillop Catholic Church	Urana Rd, Jindera	Greater Hume	Hume Zone West	Likely	Moderate	High	3A		
315	Cultural	Other	Glenellen Rural Fire Brigade Station	Glenellen rd, Glenellen	Greater Hume	Hume Zone West	Likely	Minor	Medium	4		
141	Cultural	Other	St Peter's Lutheran Church and Hall	Glenellan Rd, Gerogery West	Greater Hume	Hume Zone West	Likely	Moderate	High	3A		
384	Cultural	Other	Gerogery Rural Fire Brigade Station	Olympic Highway, Gerogery	Greater Hume	Hume Zone West	Unlikely	Minor	Low	NA		

Appendix 3. Treatment Register

Priority (Risk Rating)	Asset Name	Asset Location	Class	Subclass	Strategy	Treatment ID	Action Description	Responsible Agencies	Other RA	Support Agencies	Treatment year					
1B (Extreme)	State Forest	Carabost, Little Billabong, Lankeys Creek	Economic	Commercial Forests	Hazard Reduction	2	Low Intensity Burn	FCNSW				[1718]		[1920]		
					Ignition Management	3	Patrol/Fire Towers	FCNSW			[1617]	[1718]	[1819]	[1920]	[2021]	
						4	Restrict Access	FCNSW			[1617]	[1718]	[1819]	[1920]	[2021]	
					Preparedness	6	Fire Trail Maintenance	FCNSW			[1617]	[1718]	[1819]	[1920]	[2021]	
	Property Planning	5	Plantation Fire Management Plans	FCNSW			[1617]	[1718]	[1819]	[1920]	[2021]					
	Tree Modification	Mullengandra Nature Reserve	Cultural Heritage	Aboriginal Significance	Preparedness	92	Undertake awareness training for fire-fighters	RFS							[1920]	
One Tree Hill		Cultural Heritage	Aboriginal Significance	Preparedness	92	Undertake awareness training for fire-fighters	RFS							[1920]		
Woomargama NP		Cultural Heritage	Aboriginal Significance	Preparedness	92	Undertake awareness training for fire-fighters	RFS							[1920]		
2A (Very High)	Albury Lifestyle Village	Strauss St & Kemp St, Lavington	Human Settlement	Residential	Community Education	29	Implement Community Engagement Strategy	FRNSW				[1617]	[1718]	[1819]	[1920]	[2021]
					Hazard Reduction	57	Spray/Slash	Other	Riverina Institute of TAFE			[1617]	[1718]	[1819]	[1920]	[2021]
	Albury Sewerage	Riverina Highway, Albury	Economic	Infrastructure	Hazard Reduction	7	Spray/Slash	LGA				[1617]	[1718]	[1819]	[1920]	[2021]
						9	Undertake Annual LGA HR program	LGA			[1617]	[1718]	[1819]	[1920]	[2021]	
						17	Spray/Slash/Graze	LGA				[1718]	[1819]	[1920]	[2021]	
					Ignition Management	55	Restrict Access	LGA			[1617]	[1718]	[1819]	[1920]	[2021]	
	Albury Waste Transfer Station	Centaur Rd, Lavington	Economic	Infrastructure	Hazard Reduction	7	Spray/Slash	LGA				[1617]	[1718]	[1819]	[1920]	[2021]
						9	Undertake Annual LGA HR program	LGA			[1617]	[1718]	[1819]	[1920]	[2021]	
					Ignition Management	55	Restrict Access	LGA			[1617]	[1718]	[1819]	[1920]	[2021]	
					Preparedness	36	Fire Trail Maintenance	LGA			[1617]	[1718]	[1819]	[1920]	[2021]	
	Brocklesby Public School	Main Street, Brocklesby	Human Settlement	Special Fire Protection	Community Education	31	Ensure Community Response Plans are current	RFS				[1617]	[1718]	[1819]	[1920]	[2021]
						32	School Visit	RFS			[1617]	[1718]	[1819]	[1920]	[2021]	
					Hazard Reduction	9	Undertake Annual LGA HR program	LGA			[1617]	[1718]	[1819]	[1920]	[2021]	
					Property Planning	54	Emergency Fire & Relocation Plans	Other	Department of Education			[1617]	[1718]	[1819]	[1920]	[2021]
59						Retrofit	Other	Department of Education			[1617]	[1718]	[1819]	[1920]	[2021]	
Burrumbuttock Pre-school	Howlong Burrumbuttock Rd,	Human Settlement	Special Fire Protection	Community Education	31	Ensure Community Response Plans are current	RFS				[1617]	[1718]	[1819]	[1920]	[2021]	

Priority (Risk Rating)	Asset Name	Asset Location	Class	Subclass	Strategy	Treatment ID	Action Description	Responsible Agencies	Other RA	Support Agencies	Treatment year				
											[1617]	[1718]	[1819]	[1920]	[2021]
		Burrumbuttock				32	School Visit	RFS			[1617]	[1718]	[1819]	[1920]	[2021]
					Hazard Reduction	57	Spray/Slash	Other	Riverina Institute of TAFE	[1617]	[1718]	[1819]	[1920]	[2021]	
					Preparedness	16	Undertake Duty of Care Inspection Annually	RFS		[1617]	[1718]	[1819]	[1920]	[2021]	
	Burrumbuttock Public School	Burrumbuttock Howlong Road, Burrumbuttock	Human Settlement	Special Fire Protection	Community Education	31	Ensure Community Response Plans are current	RFS			[1617]	[1718]	[1819]	[1920]	[2021]
						32	School Visit	RFS			[1617]	[1718]	[1819]	[1920]	[2021]
					Preparedness	16	Undertake Duty of Care Inspection Annually	RFS		[1617]	[1718]	[1819]	[1920]	[2021]	
					Property Planning	54	Emergency Fire & Relocation Plans	Other	Departme nt of Education	[1617]	[1718]	[1819]	[1920]	[2021]	
						59	Retrofit	Other	Departme nt of Education	[1617]	[1718]	[1819]	[1920]	[2021]	
	Charles Sturt University, Thurgoona Campus	Elizabeth Mitchell Dr, Thurgoona	Human Settlement	Special Fire Protection	Property Planning	52	Emergency Fire and Relocation Plans	Other	Charles Sturt University		[1617]	[1718]	[1819]	[1920]	[2021]
	East Albury Interface	East Albury	Human Settlement	Residential	Hazard Reduction	7	Spray/Slash	LGA			[1617]	[1718]	[1819]	[1920]	[2021]
					Preparedness	36	Fire Trail Maintenance	LGA		[1617]	[1718]	[1819]	[1920]	[2021]	
	Fauna	Carabost	Environmental	Endangered	Preparedness	93	Undertake awareness training for fire fighters	RFS					[1819]		[2021]
		Henty Swamp	Environmental	Endangered	Preparedness	93	Undertake awareness training for fire fighters	RFS					[1819]		[2021]
		Thurgoona	Environmental	Endangered	Preparedness	93	Undertake awareness training for fire fighters	RFS					[1819]		[2021]
		Walla Walla Travelling Stock Reserve	Environmental	Endangered	Preparedness	93	Undertake awareness training for fire fighters	RFS					[1819]		[2021]
		Wonga Wetlands	Environmental	Endangered	Preparedness	93	Undertake awareness training for fire fighters	RFS					[1819]		[2021]
		Woomargama National park	Environmental	Endangered	Preparedness	93	Undertake awareness training for fire fighters	RFS					[1819]		[2021]
	Ferndale Rd Interface	Ferndale Rd, Woomargama	Human Settlement	Special Fire Protection	Community Education	28	Implement Community Engagement Strategy	RFS				[1718]			[2021]
					Hazard Reduction	9	Undertake Annual LGA HR program	LGA			[1617]	[1718]	[1819]	[1920]	[2021]
Preparedness					35	Fire Trail Maintenance	TI CL		Private	[1617]	[1718]	[1819]	[1920]	[2021]	
					37	Fire Trail Maintenance	OEH			[1617]	[1718]	[1819]	[1920]	[2021]	
Flora	Nail Can Hill	Environmental	Endangered	Preparedness	93	Undertake awareness training for fire fighters	RFS					[1819]		[2021]	

Priority (Risk Rating)	Asset Name	Asset Location	Class	Subclass	Strategy	Treatment ID	Action Description	Responsible Agencies	Other RA	Support Agencies	Treatment year				
											[1617]	[1718]	[1819]	[1920]	[2021]
	Gas Metering Station	Walbundrie Road, Culcairn	Economic	Infrastructure	Hazard Reduction	23	Spray/Slash	Other	Gas Authority		[1617]	[1718]	[1819]	[1920]	[2021]
					Property Planning	48	Retrofit	Other	Gas Authority		[1617]	[1718]			
	Gas Pipeline Valve	Jindera Walla Rd, Walla Walla	Economic	Infrastructure	Hazard Reduction	23	Spray/Slash	Other	Gas Authority		[1617]	[1718]	[1819]	[1920]	[2021]
					Property Planning	48	Retrofit	Other	Gas Authority		[1617]	[1718]			
	Gerogery Public School	Coach Rd, Gerogery	Human Settlement	Special Fire Protection	Community Education	31	Ensure Community Response Plans are current	RFS			[1617]	[1718]	[1819]	[1920]	[2021]
						32	School Visit	RFS			[1617]	[1718]	[1819]	[1920]	[2021]
					Hazard Reduction	8	Spray/Slash	TI CL			[1617]	[1718]	[1819]	[1920]	[2021]
					Property Planning	54	Emergency Fire & Relocation Plans	Other	Departme nt of Education		[1617]	[1718]	[1819]	[1920]	[2021]
						59	Retrofit	Other	Departme nt of Education		[1617]	[1718]	[1819]	[1920]	[2021]
	Goombargana Hill Communications Site	Daysdale Rd, Goombargana	Economic	Infrastructure	Hazard Reduction	8	Spray/Slash	TI CL			[1617]	[1718]	[1819]	[1920]	[2021]
					Preparedness	35	Fire Trail Maintenance	TI CL		Private	[1617]	[1718]	[1819]	[1920]	[2021]
	Henty Hospital	Keighran St, Henty	Human Settlement	Special Fire Protection	Community Education	29	Implement Community Engagement Strategy	FRNSW			[1617]	[1718]	[1819]	[1920]	[2021]
						31	Ensure Community Response Plans are current	RFS			[1617]	[1718]	[1819]	[1920]	[2021]
					Hazard Reduction	9	Undertake Annual LGA HR program	LGA			[1617]	[1718]	[1819]	[1920]	[2021]
					Property Planning	53	Emergency Fire and Relocation Plans	Other	Health NSW		[1617]	[1718]	[1819]	[1920]	[2021]
	Henty North Interface	Elm St, Henty	Human Settlement	Residential	Community Education	29	Implement Community Engagement Strategy	FRNSW			[1617]	[1718]	[1819]	[1920]	[2021]
						31	Ensure Community Response Plans are current	RFS			[1617]	[1718]	[1819]	[1920]	[2021]
					Hazard Reduction	9	Undertake Annual LGA HR program	LGA			[1617]	[1718]	[1819]	[1920]	[2021]
	Henty Retirement Village	Rosler St, Henty	Human Settlement	Residential	Community Education	29	Implement Community Engagement Strategy	FRNSW			[1617]	[1718]	[1819]	[1920]	[2021]
						31	Ensure Community Response Plans are current	RFS			[1617]	[1718]	[1819]	[1920]	[2021]
					Hazard Reduction	9	Undertake Annual LGA HR program	LGA			[1617]	[1718]	[1819]	[1920]	[2021]
					Preparedness	36	Fire Trail Maintenance	LGA			[1617]	[1718]	[1819]	[1920]	[2021]
	Hume Forest Plantations	Carabost, Billabong, Lankeys Creek	Economic	Commercial Forests	Hazard Reduction	18	Spray/Slash/Burn	Other	Hume Forests		[1617]	[1718]	[1819]	[1920]	[2021]

Priority (Risk Rating)	Asset Name	Asset Location	Class	Subclass	Strategy	Treatment ID	Action Description	Responsible Agencies	Other RA	Support Agencies	Treatment year				
											[1617]	[1718]	[1819]	[1920]	[2021]
					Ignition Management	25	Restrict Access	Other	Hume Forests		[1617]	[1718]	[1819]	[1920]	[2021]
					Preparedness	38	Fire Trail Maintenance	Other	Hume Forests		[1617]	[1718]	[1819]	[1920]	[2021]
					Property Planning	43	Maintain Current Management Plans	Other	Hume Forests		[1617]	[1718]	[1819]	[1920]	[2021]
	Hume Freeway	Across District	Economic	Infrastructure	Hazard Reduction	11	Undertake roadside works program	RMS		LGA	[1617]	[1718]	[1819]	[1920]	[2021]
	Hume Weir Village	Hume Weir Village, Lake Hume	Human Settlement	Residential	Community Education	28	Implement Community Engagement Strategy	RFS				[1718]			[2021]
31						Ensure Community Response Plans are current	RFS			[1617]	[1718]	[1819]	[1920]	[2021]	
Hazard Reduction					7	Spray/Slash	LGA			[1617]	[1718]	[1819]	[1920]	[2021]	
					21	Spray/Slash/Burn	Other	Water Authority		[1617]	[1718]	[1819]	[1920]	[2021]	
	Jindera Aged Care Facility	Creek St, Jindera	Human Settlement	Special Fire Protection	Community Education	28	Implement Community Engagement Strategy	RFS				[1718]			[2021]
31						Ensure Community Response Plans are current	RFS			[1617]	[1718]	[1819]	[1920]	[2021]	
Hazard Reduction					9	Undertake Annual LGA HR program	LGA			[1617]	[1718]	[1819]	[1920]	[2021]	
Property Planning					58	Emergency Fire & Relocation Plans	Private			[1617]	[1718]	[1819]	[1920]	[2021]	
	Jindera Industrial Estate	Urana Rd, Jindera	Economic	Commercial	Hazard Reduction	9	Undertake Annual LGA HR program	LGA			[1617]	[1718]	[1819]	[1920]	[2021]
17						Spray/Slash/Graze	LGA				[1718]	[1819]	[1920]	[2021]	
78						Low Intensity Burn	LGA		RFS			[1819]			
	Jindera Pre-school	Jindera St, Jindera	Human Settlement	Special Fire Protection	Community Education	32	School Visit	RFS			[1617]	[1718]	[1819]	[1920]	[2021]
Preparedness					16	Undertake Duty of Care Inspection Annually	RFS			[1617]	[1718]	[1819]	[1920]	[2021]	
Property Planning					58	Emergency Fire & Relocation Plans	Private			[1617]	[1718]	[1819]	[1920]	[2021]	
	Jingellic Communications Site	Tower Trail, Woomargama NP	Economic	Infrastructure	Hazard Reduction	8	Spray/Slash	TI CL			[1617]	[1718]	[1819]	[1920]	[2021]
24						Spray/Slash/Burn	OEH								
Preparedness					6	Fire Trail Maintenance	FCNSW			[1617]	[1718]	[1819]	[1920]	[2021]	
					37	Fire Trail Maintenance	OEH			[1617]	[1718]	[1819]	[1920]	[2021]	
	Lindner Road Electrical Sub-station	Lindner Rd, Jindera	Economic	Infrastructure	Hazard Reduction	22	Spray/Slash	Other	Electricity Authority		[1617]	[1718]	[1819]	[1920]	[2021]
	Monument Hill Interface	Monument Hill, Albury	Human Settlement	Residential	Hazard Reduction	7	Spray/Slash	LGA			[1617]	[1718]	[1819]	[1920]	[2021]
8						Spray/Slash	TI CL			[1617]	[1718]	[1819]	[1920]	[2021]	
	Mt Locah Communications Site	Yambla Range, Gerogery	Economic	Infrastructure	Hazard Reduction	8	Spray/Slash	TI CL			[1617]	[1718]	[1819]	[1920]	[2021]
Preparedness					37	Fire Trail Maintenance	OEH			[1617]	[1718]	[1819]	[1920]	[2021]	

Priority (Risk Rating)	Asset Name	Asset Location	Class	Subclass	Strategy	Treatment ID	Action Description	Responsible Agencies	Other RA	Support Agencies	Treatment year					
											[1617]	[1718]	[1819]	[1920]	[2021]	
	Mt McKenzie Communications Site	Woomargama	Economic	Infrastructure	Hazard Reduction	8	Spray/Slash	TI CL			[1617]	[1718]	[1819]	[1920]	[2021]	
					Preparedness	35	Fire Trail Maintenance	TI CL		Private	[1617]	[1718]	[1819]	[1920]	[2021]	
	Mullengandra Public School	Hume Highway, Mullengandra	Human Settlement	Special Fire Protection	Community Education	32	School Visit	RFS			[1617]	[1718]	[1819]	[1920]	[2021]	
					Preparedness	16	Undertake Duty of Care Inspection Annually	RFS			[1617]	[1718]	[1819]	[1920]	[2021]	
					Property Planning	54	Emergency Fire & Relocation Plans	Other	Departme nt of Education			[1617]	[1718]	[1819]	[1920]	[2021]
						59	Retrofit	Other	Departme nt of Education			[1617]	[1718]	[1819]	[1920]	[2021]
	Myoora Hostel	Keighran St. Henty	Human Settlement	Special Fire Protection	Community Education	29	Implement Community Engagement Strategy	FRNSW			[1617]	[1718]	[1819]	[1920]	[2021]	
						31	Ensure Community Response Plans are current	RFS			[1617]	[1718]	[1819]	[1920]	[2021]	
					Hazard Reduction	9	Undertake Annual LGA HR program	LGA			[1617]	[1718]	[1819]	[1920]	[2021]	
					Property Planning	53	Emergency Fire and Relocation Plans	Other	Health NSW			[1617]	[1718]	[1819]	[1920]	[2021]
	Norske Skog Pine Plantation	Hume Highway, Tble Top	Economic	Commercial Forests												
	Olympic Highway	Across District	Economic	Infrastructure	Hazard Reduction	11	Undertake roadside works program	RMS		LGA	[1617]	[1718]	[1819]	[1920]	[2021]	
	One Tree Hill Communications Site	Shaw St, Lavington	Economic	Infrastructure	Hazard Reduction	8	Spray/Slash	TI CL			[1617]	[1718]	[1819]	[1920]	[2021]	
					Ignition Management	56	Restrict Access	TI CL			[1617]	[1718]	[1819]	[1920]	[2021]	
					Preparedness	35	Fire Trail Maintenance	TI CL		Private	[1617]	[1718]	[1819]	[1920]	[2021]	
	Peddles Hill Communication Site	Ross Road, Henty	Economic	Infrastructure	Preparedness	35	Fire Trail Maintenance	TI CL		Private	[1617]	[1718]	[1819]	[1920]	[2021]	
	Riverina Highway	Across District	Economic	Infrastructure	Hazard Reduction	11	Undertake roadside works program	RMS		LGA	[1617]	[1718]	[1819]	[1920]	[2021]	
	Riverina Institute of TAFE	Poole St, Albury	Human Settlement	Special Fire Protection	Hazard Reduction	9	Undertake Annual LGA HR program	LGA			[1617]	[1718]	[1819]	[1920]	[2021]	
						57	Spray/Slash	Other	Riverina Institute of TAFE			[1617]	[1718]	[1819]	[1920]	[2021]
					Preparedness	36	Fire Trail Maintenance	LGA			[1617]	[1718]	[1819]	[1920]	[2021]	
						37	Fire Trail Maintenance	OEH			[1617]	[1718]	[1819]	[1920]	[2021]	
					Property Planning	51	Emergency Fire and Relocation Plans	Other	Riverina Institute of TAFE			[1617]	[1718]	[1819]	[1920]	[2021]
	Riverina Water Sub-station	Ralvona Rd, Ralvona	Economic	Infrastructure	Hazard Reduction	21	Spray/Slash/Burn	Other	Water Authority		[1617]	[1718]	[1819]	[1920]	[2021]	

Priority (Risk Rating)	Asset Name	Asset Location	Class	Subclass	Strategy	Treatment ID	Action Description	Responsible Agencies	Other RA	Support Agencies	Treatment year					
											[1617]	[1718]	[1819]	[1920]	[2021]	
					Property Planning	46	Retrofit	Other	Water Authority		[1617]	[1718]				
	Riverlea Piggery	Riverina Highway, Bungowannah	Economic	Commercial	Hazard Reduction	57	Spray/Slash	Other	Riverina Institute of TAFE		[1617]	[1718]	[1819]	[1920]	[2021]	
	Scarred Tree	Coppabella	Cultural Heritage	Aboriginal Significance	Preparedness	93	Undertake awareness training for fire fighters	RFS					[1819]		[2021]	
		Wonga Wetlands	Cultural Heritage	Aboriginal Significance	Preparedness	93	Undertake awareness training for fire fighters	RFS					[1819]		[2021]	
	Snowy Mountains Forests	Carabost, Billabong, Lankeys Creek	Economic	Commercial Forests	Hazard Reduction	19	Spray/Slash/Burn	Other	Snowy Mountain Forests		[1617]	[1718]	[1819]	[1920]	[2021]	
					Ignition Management	26	Restrict Access	Other	Snowy Mountain Forests		[1617]	[1718]	[1819]	[1920]	[2021]	
					Preparedness	39	Fire Trail Maintenance	Other	Snowy Mountain Forests		[1617]	[1718]	[1819]	[1920]	[2021]	
					Property Planning	44	Management Plans	Other	Snowy Mountain Forests		[1617]	[1718]	[1819]	[1920]	[2021]	
		Carabost, Little Billabong, Lankeys Creek	Economic	Commercial Forests	Hazard Reduction	19	Spray/Slash/Burn	Other	Snowy Mountain Forests		[1617]	[1718]	[1819]	[1920]	[2021]	
					Ignition Management	26	Restrict Access	Other	Snowy Mountain Forests		[1617]	[1718]	[1819]	[1920]	[2021]	
					Preparedness	39	Fire Trail Maintenance	Other	Snowy Mountain Forests		[1617]	[1718]	[1819]	[1920]	[2021]	
					Property Planning	44	Management Plans	Other	Snowy Mountain Forests		[1617]	[1718]	[1819]	[1920]	[2021]	
	Splitters Creek	Splitters Creek, Albury	Human Settlement	Residential	Community Education	90	Community Awareness	RFS			[1617]	[1718]	[1819]	[1920]	[2021]	
					Hazard Reduction	77	Low Intensity Burn	TI CL		RFS						[2021]
					Preparedness	35	Fire Trail Maintenance	TI CL		Private		[1617]	[1718]	[1819]	[1920]	[2021]
						36	Fire Trail Maintenance	LGA				[1617]	[1718]	[1819]	[1920]	[2021]
	Spring Park Estate	Old Table Top Rd, Thurgoona	Human Settlement	Residential	Community Education	33	Community Fire Unit	RFS			[1617]	[1718]	[1819]	[1920]	[2021]	
					Hazard Reduction	8	Spray/Slash	TI CL			[1617]	[1718]	[1819]	[1920]	[2021]	
						77	Low Intensity Burn	TI CL		RFS					[2021]	
					Preparedness	35	Fire Trail Maintenance	TI CL		Private	[1617]	[1718]	[1819]	[1920]	[2021]	
	Sydney Melbourne Rail Corridor	Across District	Economic	Infrastructure	Hazard Reduction	12	Undertake Rail Corridor Maintenance Program	ARTC			[1617]	[1718]	[1819]	[1920]	[2021]	

Priority (Risk Rating)	Asset Name	Asset Location	Class	Subclass	Strategy	Treatment ID	Action Description	Responsible Agencies	Other RA	Support Agencies	Treatment year				
											[1617]	[1718]	[1819]	[1920]	[2021]
	Table Top Primary School	Burma Rd, Table Top	Human Settlement	Special Fire Protection	Community Education	31	Ensure Community Response Plans are current	RFS			[1617]	[1718]	[1819]	[1920]	[2021]
						32	School Visit	RFS			[1617]	[1718]	[1819]	[1920]	[2021]
					Preparedness	16	Undertake Duty of Care Inspection Annually	RFS			[1617]	[1718]	[1819]	[1920]	[2021]
					Property Planning	54	Emergency Fire & Relocation Plans	Other	Departme nt of Education		[1617]	[1718]	[1819]	[1920]	[2021]
	The Grange Aged Care Facility	Thurgoona Dr, Thurgoona	Human Settlement	Special Fire Protection	Community Education	29	Implement Community Engagement Strategy	FRNSW			[1617]	[1718]	[1819]	[1920]	[2021]
					Property Planning	58	Emergency Fire & Relocation Plans	Private			[1617]	[1718]	[1819]	[1920]	[2021]
	Tin Mines Camp	Tin Mines Trail, Woomargama National Park	Human Settlement	Other	Community Education	30	Community Awareness	OEH			[1617]	[1718]	[1819]	[1920]	[2021]
					Hazard Reduction	89	Spray/Slash/Burn	OEH			[1617]	[1718]	[1819]	[1920]	[2021]
					Preparedness	37	Fire Trail Maintenance	OEH			[1617]	[1718]	[1819]	[1920]	[2021]
	Tree Modification	Yarra Yarra	Cultural Heritage	Aboriginal Significance	Preparedness	93	Undertake awareness training for fire fighters	RFS				[1819]		[2021]	
	Tree Modification	12 Mile Reserve	Cultural Heritage	Aboriginal Significance	Preparedness	93	Undertake awareness training for fire fighters	RFS				[1819]		[2021]	
		Ashley Park	Cultural Heritage	Aboriginal Significance	Preparedness	93	Undertake awareness training for fire fighters	RFS				[1819]		[2021]	
		Back Creek, Wantigong	Cultural Heritage	Aboriginal Significance	Preparedness	93	Undertake awareness training for fire fighters	RFS				[1819]		[2021]	
		Billabong Creek	Cultural Heritage	Aboriginal Significance	Preparedness	93	Undertake awareness training for fire fighters	RFS				[1819]		[2021]	
		Bowna	Cultural Heritage	Aboriginal Significance	Preparedness	93	Undertake awareness training for fire fighters	RFS				[1819]		[2021]	
		Brae Springs	Cultural Heritage	Aboriginal Significance	Preparedness	93	Undertake awareness training for fire fighters	RFS				[1819]		[2021]	
		Burrumbuttock	Cultural Heritage	Aboriginal Significance	Preparedness	93	Undertake awareness training for fire fighters	RFS				[1819]		[2021]	
		Dights Hill	Cultural Heritage	Aboriginal Significance	Preparedness	93	Undertake awareness training for fire fighters	RFS				[1819]		[2021]	
		Ettamogah	Cultural Heritage	Aboriginal Significance	Preparedness	93	Undertake awareness training for fire fighters	RFS				[1819]		[2021]	
Henty Swamp		Cultural Heritage	Aboriginal Significance	Preparedness	93	Undertake awareness training for fire fighters	RFS				[1819]		[2021]		
Holbrook		Cultural Heritage	Aboriginal Significance	Preparedness	93	Undertake awareness training for fire fighters	RFS				[1819]		[2021]		
Jindera		Cultural Heritage	Aboriginal Significance	Preparedness	93	Undertake awareness training for fire fighters	RFS				[1819]		[2021]		
Little Billabong		Cultural Heritage	Aboriginal Significance	Preparedness	93	Undertake awareness training for fire fighters	RFS				[1819]		[2021]		
Mullengandra		Cultural Heritage	Aboriginal Significance	Preparedness	93	Undertake awareness training for fire fighters	RFS				[1819]		[2021]		

Priority (Risk Rating)	Asset Name	Asset Location	Class	Subclass	Strategy	Treatment ID	Action Description	Responsible Agencies	Other RA	Support Agencies	Treatment year				
	Carabost Hall	Tumburarumba Rd, Carabost	Economic	Tourist and Recreation											
	Carabost Rural Fire Brigade Station	Carabost Rd, Carabost	Cultural Heritage	Other											
	Carabost Telephone Exchange	Tumbarumba Rd, Carabost	Economic	Infrastructure											
	Carisbrook Estate	Tynans Rd, Table Top	Human Settlement	Residential											
	Centaur Rd Interface	Centaur Rd, Lavington	Human Settlement	Residential	Preparedness	75	Fire Trail Maintenance	TI CL			[1617]	[1718]	[1819]	[1920]	[2021]
	Central Reserve Road Interface	Central Reserve Rd, Lavington	Human Settlement	Residential	Preparedness	75	Fire Trail Maintenance	TI CL			[1617]	[1718]	[1819]	[1920]	[2021]
	Central Rural Fire Brigade Station	Millswood Rd, Holbrook	Cultural Heritage	Other											
	Cookardinia Hall	Wagga Rd, Cookardinia	Economic	Tourist and Recreation											
	Cookardinia Telephone Exchange	Wagga Rd, Cookardinia	Economic	Infrastructure											
	Cooper and Ramsden Olives	Splitters Creek Rd, Splitters Creek	Economic	Agricultural											
	Coppabella Blacksmith Shop	Coppabella Rd, Coppabella	Cultural Heritage	Non Indigenous											
	Coppabella Telephone Exchange	Four Mile Lane, Lankeys Creek	Economic	Infrastructure											
	Cornish Chimney	Millers Rd, Woomargama SF	Cultural Heritage	Non Indigenous											
	Culcairn Bowling Club	Olympic Highway, Culcairn	Economic	Commercial											
	Culcairn Golf Club	Culcairn Holbrook Rd, Culcairn	Economic	Tourist and Recreation											
	Culcairn Interface	Stockroute Rd, Culcairn	Human Settlement	Residential	Hazard Reduction	66	Spray/Slash/Burn	LGA			[1617]	[1718]	[1819]	[1920]	[2021]
	Culcairn Sewerage Treatment Works	Baird St, Culcairn	Economic	Infrastructure											
	Culcairn Sports Ground	Federal Street, Culcairn	Economic	Tourist and Recreation											
	Culcairn Waste Site	Schnaars Rd, Culcairn	Economic	Infrastructure											
	Doctors Point Interface	Eastern Hill, Albury	Human Settlement	Residential	Hazard Reduction	66	Spray/Slash/Burn	LGA			[1617]	[1718]	[1819]	[1920]	[2021]
					Preparedness	72	Fire Trail Maintenance	LGA			[1617]	[1718]	[1819]	[1920]	[2021]

Priority (Risk Rating)	Asset Name	Asset Location	Class	Subclass	Strategy	Treatment ID	Action Description	Responsible Agencies	Other RA	Support Agencies	Treatment year								
	PJN Sheds	Commercial St, Walla Walla	Economic	Commercial															
	Pleasure Point	Wymah Rd, Wymah	Human Settlement	Other															
	Ralvona Rural Fire Brigade Station	Ralvona Rd, Ralvona	Cultural Heritage	Other															
	Riverina Water Red Creek Pumping Station	Cummings Road, Culcairn	Economic	Infrastructure															
	Round Hill Hotel	Brownrigg Street, Morven	Cultural Heritage	Non Indigenous															
			Economic	Commercial															
	Severin Feed Lot	Fax Vale Road, Goombargana	Economic	Commercial															
	Splitters Creek Community Centre (NSP)	Splitters Creek Rd, Splitters Creek	Human Settlement	Other															
	Splitters Creek Pump Station	Delaware Rd, Splitters Creek	Economic	Infrastructure															
	Splitters Creek Rural Fire Brigade Station	Splitters Creek Rd, Splitters Creek	Cultural Heritage	Other															
	Springdale Heights Interface	Springdale Heights, Albury	Human Settlement	Residential															
	St John's Lutheran Primary School	Adam St, Jindera	Human Settlement	Special Fire Protection	Community Education	31	Ensure Community Response Plans are current	RFS				[1617]	[1718]	[1819]	[1920]	[2021]			
									32	School Visit	RFS				[1617]	[1718]	[1819]	[1920]	[2021]
									Hazard Reduction	57	Spray/Slash	Other	Riverina Institute of TAFE		[1617]	[1718]	[1819]	[1920]	[2021]
									Property Planning	1	Maintain Emergency Fire and Relocation Plans	Other	Private Schools	RFS	[1617]	[1718]	[1819]	[1920]	[2021]
	St Mary McKillop Catholic Church	Urana Rd, Jindera	Cultural Heritage	Other															
	St Mary McKillop Catholic School	Urana Rd, Jindera	Human Settlement	Special Fire Protection	Community Education	31	Ensure Community Response Plans are current	RFS				[1617]	[1718]	[1819]	[1920]	[2021]			
									32	School Visit	RFS				[1617]	[1718]	[1819]	[1920]	[2021]
									Property Planning	1	Maintain Emergency Fire and Relocation Plans	Other	Private Schools	RFS	[1617]	[1718]	[1819]	[1920]	[2021]
	St Paul's College	Commercial St, Walla Walla	Human Settlement	Special Fire Protection	Community Education	31	Ensure Community Response Plans are current	RFS				[1617]	[1718]	[1819]	[1920]	[2021]			
									Property Planning	1	Maintain Emergency Fire and Relocation Plans	Other	Private Schools	RFS	[1617]	[1718]	[1819]	[1920]	[2021]

Priority (Risk Rating)	Asset Name	Asset Location	Class	Subclass	Strategy	Treatment ID	Action Description	Responsible Agencies	Other RA	Support Agencies	Treatment year				
		North Albury	Environmental	Endangered											
		Woomargama NP	Environmental	Vulnerable											
	Ferndale Silo	Ferndale Rd, Bulgandra	Economic	Agricultural											
	Garryowen Telephone Tower	Cromer Hill, Garryowen	Economic	Infrastructure											
	Gasline Pumping Station	Yankee Crossing Rd, Henty	Economic	Infrastructure											
	Gerogery West Tennis Club	Glenellen Rd, Gerogery West	Economic	Tourist and Recreation											
	Glenellen Rural Fire Brigade Station	Glenellen rd, Glenellen	Cultural Heritage	Other											
	Godde's Grain Store	Schnaars Road, Culcairn	Economic	Agricultural											
	Henty Pre-school	Lyne St, Henty	Human Settlement	Special Fire Protection	Community Education	70	Community Awareness	FRNSW			[1617]	[1718]	[1819]	[1920]	[2021]
	Henty Public School	Sladen St, Henty	Human Settlement	Special Fire Protection	Community Education	70	Community Awareness	FRNSW			[1617]	[1718]	[1819]	[1920]	[2021]
	Henty Refuse Station	Henty Pleasant Hills Rd, Henty	Economic	Infrastructure											
	Henty Sewerage Treatment Works	Smith Street, Henty	Economic	Infrastructure											
	Holbrook Hospital	Bowler St, Holbrook	Human Settlement	Special Fire Protection	Community Education	70	Community Awareness	FRNSW			[1617]	[1718]	[1819]	[1920]	[2021]
	Holbrook Pre- school	Swift St, Holbrook	Human Settlement	Special Fire Protection	Community Education	70	Community Awareness	FRNSW			[1617]	[1718]	[1819]	[1920]	[2021]
	Holbrook Public School	Albury St, Holbrook	Human Settlement	Special Fire Protection	Community Education	70	Community Awareness	FRNSW			[1617]	[1718]	[1819]	[1920]	[2021]
	Holbrook RTA Depot	Albury St, Holbrook	Economic	Commercial											
	Holbrook Village Hostel	Bowler St, Holbrook	Human Settlement	Special Fire Protection	Community Education	70	Community Awareness	FRNSW			[1617]	[1718]	[1819]	[1920]	[2021]
	Jindera Brick Works	Hueske Rd, Jindera	Economic	Commercial											
	Jindera Pioneer Museum	Urana Rd, Jindera	Economic	Tourist and Recreation											
	Jindera Shopping Centre	Urana Rd & Creek St, Jindera	Economic	Commercial											
	Kotzurs Silo's	Commercial St, Walla Walla	Economic	Commercial											
	Lutheran Aged Care	Pemberton St, Albury	Human Settlement	Special Fire Protection	Community Education	70	Community Awareness	FRNSW			[1617]	[1718]	[1819]	[1920]	[2021]
	Morven NSP	Morven Gerogery Rd, Morven	Human Settlement	Other	Hazard Reduction	68	Spray/Slash	LGA			[1617]	[1718]	[1819]	[1920]	[2021]

Hume Zone BFMC Bush Fire Risk Management Plan 2017

Hume Zone East - Map Display Area

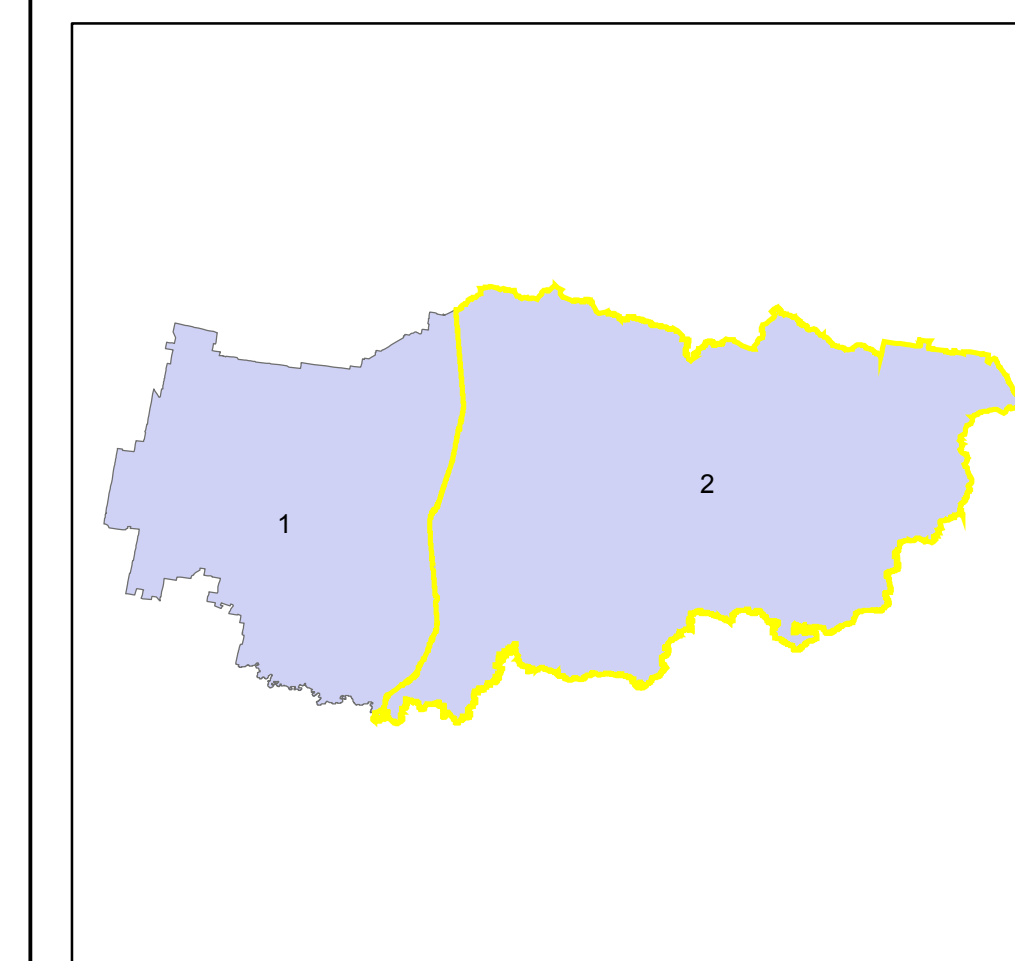
Map 2 of 2

This Bush Fire Risk Management Plan (BFRMP) has been prepared by the Hume Zone Bush Fire Management Committee (BFMC) pursuant to section 52 of the Rural Fires Act 1997.

The aim of this BFRMP is to reduce the adverse impact of bush fires on life, property and the environment.

- The objectives of this BFRMP are to:
- reduce the number of human-induced bush fire ignitions that cause damage to life, property or the environment;
 - manage fuel to reduce the spread and intensity of bush fires while minimising environmental/ecological impacts;
 - reduce the community's vulnerability to bush fires by improving its preparedness; and
 - effectively contain fires with a potential to cause damage to life, property and the environment.

This map forms part of the BFRMP for the Hume Zone BFMC, covering the local government areas of Albury and Greater Hume. It should be viewed in conjunction with the accompanying BFRMP document which provides further details on the BFMC area, the assets assessed and the risk assessment process used.



Review
Under the Rural Fires Act 1997 this plan must be reviewed and updated within each successive five year period following the constitution of the BFMC. The Hume Zone BFMC will also review this plan as necessary. This may be triggered by a range of circumstances, including but not limited to:

- changes to the BFMC area, organisational responsibilities or legislation;
- changes to the bush fire risk in the area; or
- following a major fire event.

Assets

This BFRMP identifies the assets that are considered by the Hume Zone BFMC and community to be at risk from bush fires, assesses the bush fire risk to each asset and assigns treatments designed to mitigate the risk. Assets in the BFMC area identified as requiring treatments are listed in the assets table. Other assets within the BFMC area that were assessed but not requiring treatments within the life of this plan are listed in the appendix to the BFRMP document. The Map Ref number "NA" denotes non-spatial assets.

Treatments

Specific treatments assigned to assets in the Hume Zone area are listed in the treatments table and linked to the assets which they are designed to protect. Standard BFMC wide treatments (i.e. not linked to a specific asset) which occur on an ongoing basis within the BFMC area are:

- reviewing the bush fire prone land map;
- ensuring developments in the bush fire prone land comply with Planning for Bush Fire Protection;
- using the Local Environment Plan's (LEPs) to control development in areas with a bush fire risk;
- varying the standard bush fire danger period as required;
- requiring permits during bush fire danger periods;
- prosecution of arsonists/offenders;
- investigation of bush fire causes;
- normal fire suppression activities;
- assessing and managing compliance with strategic fire-fighting resource allocation management systems;
- preparation of a S52 Operations Coordination Plan;

Note on LMZ: All areas not specifically mapped as an APZ, SFZ or FEZ are considered as LMZ for this risk management plan. For areas identified by an LMZ polygon on the map, please refer to the BFRMP document for the specific-land management objectives.

Asset Protection Zone	Purpose	Suppression	Zone
Asset Protection Zone	To protect human life, property and highly valued public assets and values.	To enable the safe use of Direct Attack suppression strategies within the zone.	As per RFS document Standards for Asset Protection Zones.
Strategic Fire Advantage Zone	To provide strategic areas of fire protection advantage which will reduce the speed and intensity of bush fires, and reduce the potential for spot fire development. To aid containment of wildfires in existing management boundaries.	To improve the likelihood and safe use of Parallel Attack suppression strategies within the zone. and/or Indirect Attack (back burning) in high to very high fire weather conditions within the zone.	Zone width related to suppression objectives and dependent upon: - Topography - Aspect - Location of adjacent fire breaks - Mosaic pattern of treatment Assess Overall Fuel Hazard (OFH) once vegetation communities reach minimum fire thresholds within this plan. Management practices should aim to achieve mosaic fuel reduction patterns so that the majority of the SFZ has an OFH of less than high.
Land Management Zone	To meet relevant land management objectives in area where APZs or SFZs are not appropriate.	As per the land management and fire protection objectives of the responsible land management agency.	As appropriate to achieve land management, e.g. heritage and/or fire protection e.g. broad scale mosaic burning objectives. To undertake mosaic burning.
Fire Exclusion Zone	To exclude bush fires.	NA	Variable dependent on size of fire sensitive area requiring protection.

Disclaimer
The Hume Zone BFMC makes every effort to ensure the quality of the information available on this map. Before relying on the information on this map, users should carefully evaluate its accuracy, completeness and relevance for their purposes, and should obtain any appropriate professional advice relevant to their particular circumstances.

The Hume Zone BFMC can not guarantee and assumes no legal liability or responsibility for the accuracy, currency or completeness of the information. Copyright: Hume Zone BFMC 2017.

Authorized by: of Hume Zone BFMC.

Date created: Friday, 28 April 2017

BFRMP version 2.1.26.0

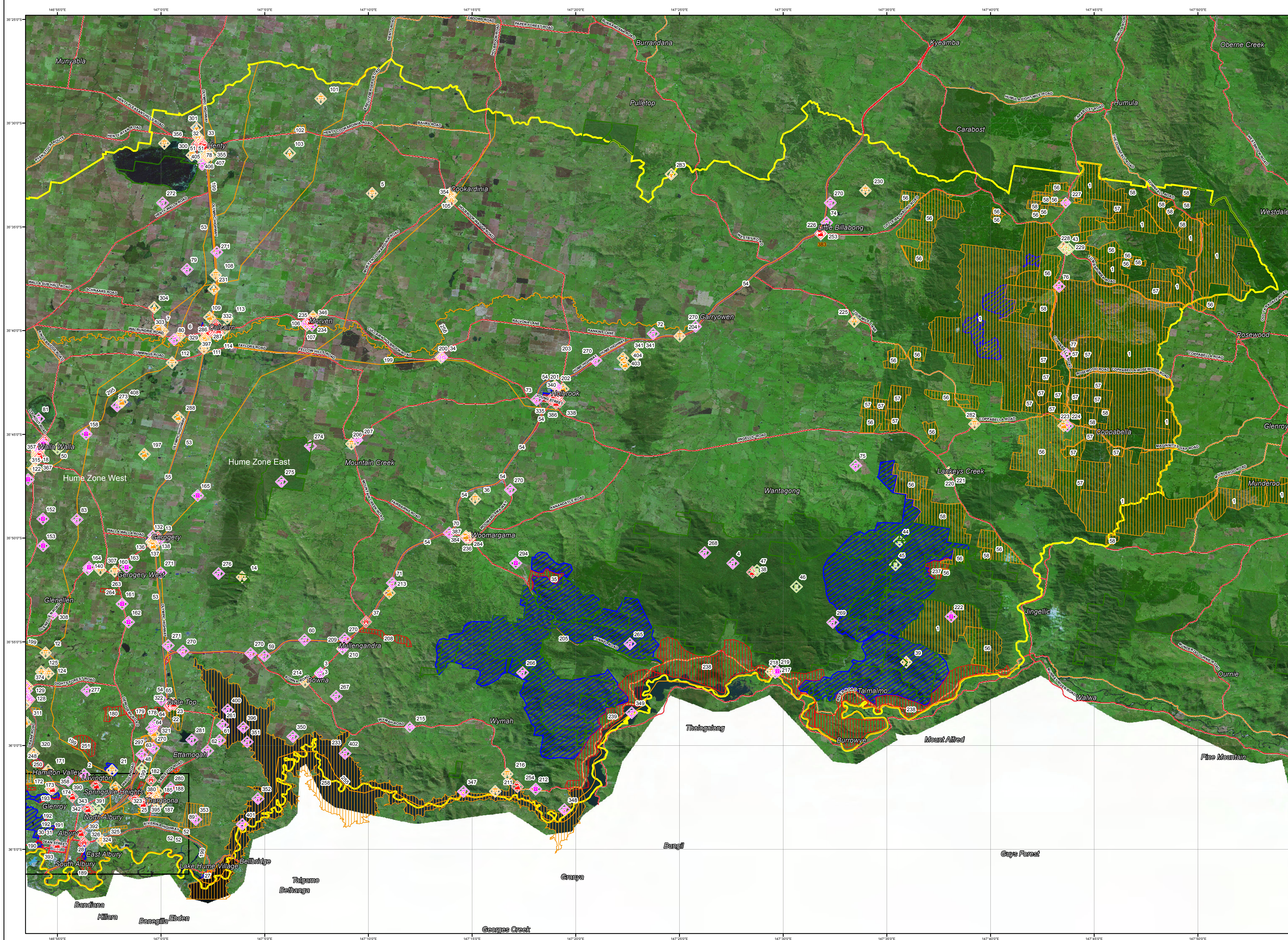
Map Ref	Asset name	Asset type	Subtype	Risk level	Priority	Treatment
1	State Forest	Economic	Commercial	Extreme	1B	(1)
3	Tree Modification	Cultural	Aboriginal	Extreme	1B	T12
4	Tree Modification	Cultural	Aboriginal	Extreme	1B	T12
5	Peddles Hill Communication Site	Economic	Infrastructure	Very High	2A	T36
13	Geregy Public School	Human	Special Fire	Very High	2A	(2)
14	M Locah Communications Site	Economic	Infrastructure	Very High	2A	T38,14
22	Norske Skog Pine Plantation	Economic	Commercial	Very High	2A	T61
23	Table Top Primary School	Human	Special Fire	Very High	2A	(3)
24	Spring Park Estate	Human	Residential	Very High	2A	(4)
25	The Grange Aged Care Facility	Human	Special Fire	Very High	2A	T53,30
26	Charles Sturt University, Thurgoona	Human	Special Fire	Very High	2A	T47
27	Hume Weir Village	Human	Residential	Very High	2A	(5)
28	East Albury Interface	Human	Residential	Very High	2A	T13,37
34	Riverina Water Sub-station	Economic	Infrastructure	Very High	2A	T23,44
35	Ferndale Rd Interface	Human	Special Fire	Very High	2A	(6)
36	McKenzie Communications Site	Economic	Infrastructure	Very High	2A	T14,36
37	Mullengandra Public School	Human	Special Fire	Very High	2A	(7)
38	Tan Mines Camp	Human	Other	Very High	2A	T57,38,31
39	Jungellic Communications Site	Economic	Infrastructure	Very High	2A	(8)
43	Fauna	Environment	Endangered	Very High	2A	T59
44	Fauna	Environment	Endangered	Very High	2A	T59
45	Fauna	Environment	Endangered	Very High	2A	T59
46	Fauna	Environment	Endangered	Very High	2A	T59
47	Fauna	Environment	Endangered	Very High	2A	T59
54	Hume Freeway	Economic	Infrastructure	Very High	2A	T16
55	Sydney Melbourne Rail Corridor	Economic	Infrastructure	Very High	2A	T17
56	Snowy Mountains Forests	Economic	Commercial	Very High	2A	(9)
57	Snowy Mountains Forests	Economic	Commercial	Very High	2A	(10)
58	Hume Forest Plantations	Economic	Commercial	Very High	2A	(11)
59	Tree modification	Cultural	Aboriginal	Very High	2A	T59
60	Tree modification	Cultural	Aboriginal	Very High	2A	T59
61	Tree Modification	Cultural	Aboriginal	Very High	2A	T59
62	Tree modification	Cultural	Aboriginal	Very High	2A	T59
70	Tree Modification	Cultural	Aboriginal	Very High	2A	T59
71	Tree Modification	Cultural	Aboriginal	Very High	2A	T59
72	Tree Modification	Cultural	Aboriginal	Very High	2A	T59
73	Tree Modification	Cultural	Aboriginal	Very High	2A	T59
74	Tree Modification	Cultural	Aboriginal	Very High	2A	T59
75	Tree Modification	Cultural	Aboriginal	Very High	2A	T59
76	Scarred Tree	Cultural	Aboriginal	Very High	2A	T59
77	Scarred Tree	Cultural	Aboriginal	Very High	2A	T59
89	Wringa Ordnance Depot	Economic	Infrastructure	Very High	2A	T60
182	National Environmental Centre (Riverina)	Human	Special Fire	High	3A	T46,52
183	Trinity College	Human	Special Fire	High	3A	T52,62
184	Mitchell Park Estate Interface	Human	Residential	High	3A	T63
188	Thurgoona Park Estate Interface	Human	Residential	High	3A	T63
189	Doctors Point Interface	Human	Residential	High	3A	T70,69
198	Woomargama Village	Human	Residential	High	3A	T15
237	Yensches Rd Subdivision	Human	Residential	High	3A	(12)
238	Talmaino NP Interface	Human	Residential	High	3A	T26,72
239	Mc Wagra NP Interface	Human	Residential	High	3A	T72,38
253	Billabong NSP	Human	Other	High	3A	T66
254	Wymah NSP	Human	Other	High	3A	T67
257	Table Top NSP	Human	Other	High	3A	T68
293	Hobbrook Interface	Human	Residential	High	3A	T63,69
326	Albury Base Hospital	Human	Special Fire	Medium	4	T78
327	Culcairn Hospital	Human	Special Fire	Medium	4	T78
328	Culcairn Hostel	Human	Special Fire	Medium	4	T78
330	Culcairn Public School	Human	Special Fire	Medium	4	T78
331	Culcairn Early Childhood Centre	Human	Special Fire	Medium	4	T78
335	Hobbrook Village Hostel	Human	Special Fire	Medium	4	T78
336	St Patricks Catholic School	Human	Special Fire	Medium	4	T78
337	Hobbrook Public School	Human	Special Fire	Medium	4	T78
338	Hobbrook Hospital	Human	Special Fire	Medium	4	T78
339	Hobbrook Pre-school	Human	Special Fire	Medium	4	T78
346	Morven NSP	Human	Other	Medium	4	T77
386	Hobrook NSP	Human	Other	Low	NA	T77
367	Woomargama NSP	Human	Other	Low	NA	T79
392	Alexandra Park NSP	Human	Other	Low	NA	T77
395	Ernest Grant Park NSP	Human	Other	Low	NA	T77

- (1) T11,7,8,9,10
- (2) T14,33,32,49,54
- (3) T32,33,49,19
- (4) T34,14,36,55
- (5) T13,23,29,32
- (6) T36,15,29,38
- (7) T19,49,33,54
- (8) T14,38,11,26
- (9) T22,28,40,43
- (10) T28,40,43,22
- (11) T21,27,39,42
- (12) T26,71,72,36

ID	Treatment strategy	Action	Agencies (Support)
T77	Hazard Reduction	Sprayslash	LGA
T78	Community Education	Community Awareness	FRNSW
T79	Hazard Reduction	Sprayslash	Woomargama Tennis Club & Hall

ID	Treatment strategy	Action	Agencies (Support)
T38	Preparedness	Fire Trail Maintenance	OEH
T39	Preparedness	Fire Trail Maintenance	Hume Forests
T40	Preparedness	Fire Trail Maintenance	Snowy Mountain Forests
T42	Property Planning	Maintain Current Management Plans	Hume Forests
T43	Property Planning	Management Plans	Snowy Mountain Forests
T44	Property Planning	Retrofit	Water Authority
T46	Property Planning	Emergency Fire and Relocation Plans	Riverina Institute of TAFE
T47	Property Planning	Emergency Fire and Relocation Plans	Charles Sturt University
T49	Property Planning	Emergency Fire & Relocation Plans	Department of Education
T52	Hazard Reduction	Sprayslash	Riverina Institute of TAFE
T53	Property Planning	Emergency Fire & Relocation Plans	Private
T54	Property Planning	Retrofit	Department of Education
T55	Hazard Reduction	Low Intensity Burn	Ti CL (RFS)
T57	Hazard Reduction	Sprayslash/Burn	OEH
T59	Preparedness	Undertake awareness training for fire fighters	RFS
T60	Hazard Reduction	Undertake regular fuel reduction	Defence
T61	Property Planning	Fire Management Plan enacted and reviewed	Norske Skog Pine Plantation (RFS)
T62	Property Planning	Maintain Emergency Fire and Relocation Plans	Private Schools (RFS)
T63	Hazard Reduction	Sprayslash/Burn	Ti CL
T66	Hazard Reduction	Sprayslash	Little Billabong Hall Committee
T67	Hazard Reduction	Sprayslash	LGA, Wymah Recreation Reserve
T68	Hazard Reduction	Sprayslash	LGA
T69	Hazard Reduction	Sprayslash/Burn	LGA
T70	Preparedness	Fire Trail Maintenance	LGA
T71	Preparedness	Fire Trail Maintenance	FCNSW
T72	Preparedness	Fire Trail Maintenance	OEH

ID	Treatment strategy	Action	Agencies (Support)
T7	Hazard Reduction	Low Intensity Burn	FCNSW
T8	Ignition Management	Patrol/Fire Towers	FCNSW
T9	Ignition Management	Restrict Access	FCNSW
T10	Property Planning	Plantation Fire Management Plans	FCNSW
T11	Preparedness	Fire Trail Maintenance	FCNSW
T12	Preparedness	Undertake awareness training for fire-fighters	RFS
T13	Hazard Reduction	Sprayslash	LGA
T14	Hazard Reduction	Sprayslash	Ti CL
T15	Hazard Reduction	Undertake Annual LGA HR program	LGA
T16	Hazard Reduction	Undertake roadside works program	RMS (LGA)
T17	Hazard Reduction	Undertake Rail Corridor Maintenance Program	ARTC
T19	Preparedness	Undertake Duty of Care Inspection Annually	RFS
T21	Hazard Reduction	Sprayslash/Burn	Hume Forests
T22	Hazard Reduction	Sprayslash/Burn	Snowy Mountain Forests
T23	Hazard Reduction	Sprayslash/Burn	Water Authority
T26	Hazard Reduction	Sprayslash/Burn	OEH
T27	Ignition Management	Restrict Access	Hume Forests
T28	Ignition Management	Restrict Access	Snowy Mountain Forests
T29	Community Education	Implement Community Engagement Strategy	RFS
T30	Community Education	Implement Community Engagement Strategy	FRNSW
T31	Community Education	Community Awareness	OEH
T32	Community Education	Ensure Community Response Plans are current	RFS
T33	Community Education	School Visit	RFS
T34	Community Education	Community Fire Unit	RFS
T36	Preparedness	Fire Trail Maintenance	Ti CL (Private)
T37	Preparedness	Fire Trail Maintenance	LGA



Assets

- Human - Residential
- Human - Other
- Special Fire Protection
- Economic - Agricultural
- Economic - Infrastructure
- Economic - Recreational
- Economic - Mines
- Commercial Forests
- Drinking Water Catchments
- Environmental - Locally Important
- Environmental - Vulnerable (Species)
- Environmental - Endangered (Species)
- Cultural - Aboriginal Heritage
- Cultural - Other
- Cultural - Non-Indigenous

Bush Fire Management Zones

- Fire Exclusion Zone (FEZ)
- Asset Protection Zone (APZ)
- Land Management Zone (LMZ)
- Strategic Fire Advantage Zone (SFZ)

Base Data Layers

- Major Roads Sealed
- Major Roads Unsealed
- Secondary Road Sealed
- Secondary Road Unsealed
- Local Road Sealed
- Local Road Unsealed
- AVD Track Unsealed
- Path
- Heavy Rail
- Light Rail
- Heavy Rail Siding
- Orange Perennial
- Drainage Non Perennial
- Hydro-Line Perennial
- Hydro-Line Non Perennial
- Contour (10m)
- Map Display Area
- Local Government Area
- Crown Land
- State Forests
- National Park

*Note - Some base data layers may not be displayed on map

Hume Zone BFMC Bush Fire Risk Management Plan 2017

Hume Zone West - Map Display Area
Map 1 of 2

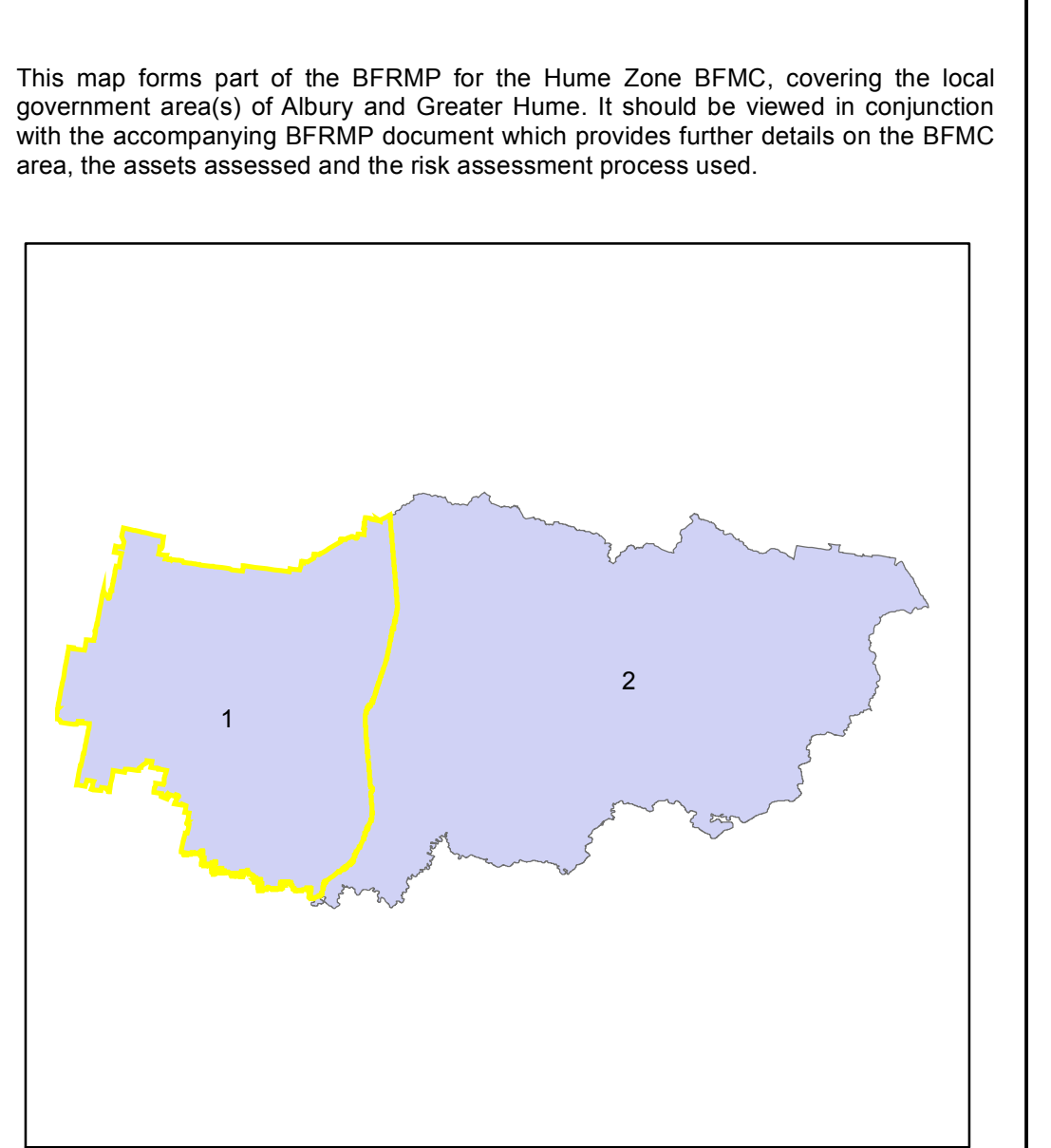
This Bush Fire Risk Management Plan (BFRMP) has been prepared by the Hume Zone Bush Fire Management Committee (BFMC) pursuant to section 52 of the Rural Fires Act 1997.

The aim of this BFRMP is to reduce the adverse impact of bush fires on life, property and the environment.

The objectives of this BFRMP are to:

- reduce the number of human-induced bush fire ignitions that cause damage to life, property or the environment;
- manage fuel to reduce the spread and intensity of bush fires while minimising environmental/ecological impacts;
- reduce the community's vulnerability to bush fires by improving its preparedness; and
- effectively contain fires with a potential to cause damage to life, property and the environment.

This map forms part of the BFRMP for the Hume Zone BFMC, covering the local government areas of Albury and Greater Hume. It should be viewed in conjunction with the accompanying BFRMP document which provides further details on the BFMC area, the assets assessed and the risk assessment process used.



Review

Under the Rural Fires Act 1997 this plan must be reviewed and updated within each successive five year period following the constitution of the BFMC. The Hume Zone BFMC will also review this plan as necessary. This may be triggered by a range of circumstances, including but not limited to:

- changes to the BFMC area, organisational responsibilities or legislation;
- changes to the bush fire risk in the area; or
- following a major fire event.

Assets

This BFRMP identifies the assets that are considered by the Hume Zone BFMC and community to be at risk from bush fires, assesses the bush fire risk to each asset and assigns treatments designed to mitigate the risk. Assets in the BFMC area identified as requiring treatments are listed in the assets table. Other assets within the BFMC area that were assessed as not requiring treatments within the life of this plan are listed in the appendix to the BFRMP document. The Map Ref number "NA" denotes non-spatial assets.

Treatments

Specific treatments assigned to assets in the Hume Zone area are listed in the treatments table and linked to the assets which they are designed to protect. Standard BFMC wide treatments (i.e. not linked to a specific asset) which occur on an ongoing basis within the BFMC area are:

- reviewing the bush fire prone land map;
- ensuring developments in the bush fire prone land comply with Planning for Bush Fire Protection;
- using the Local Environment Plan's (LEPs) to control development in areas with a bush fire risk;
- varying the standard bush fire danger period as required;
- requiring permits during bush fire danger periods
- prosecution of arsonists/offenders
- investigation of bush fire cause;
- normal fire suppression activities;
- assessing and managing compliance with strategic fire-fighting resource allocation management systems;
- preparation of a S22 Operations Coordination Plan;

Note on LMA: All areas not specifically mapped as an APZ, SFAZ or FEZ are considered as LMAZ for this risk management plan. For areas identified by an LMAZ polygon on the map, please refer to the BFRMP document for the specific land management objectives.

Map Ref	Asset name	Asset type	Subtype	Risk level	Priority	Treatment
2	Tree Modification	Cultural	Aboriginal	Extreme	1B	T12
6	Gas Metering Station	Economic	Infrastructure	Very High	2A	T25,45
8	Burumbuttock Pre-school	Human	Special Fire	Very High	2A	(1)
9	Jindera Aged Care Facility	Human	Special Fire	Very High	2A	(2)
10	Jindera Pre-school	Human	Special Fire	Very High	2A	T53,33,19
11	Jindera Industrial Estate	Economic	Commercial	Very High	2A	T15,20,56
12	Lindner Road Electrical Sub-station	Economic	Infrastructure	Very High	2A	T24
15	Goombargana Hill Communications Site	Economic	Infrastructure	Very High	2A	T14,36
16	Riverlea Piggery	Economic	Commercial	Very High	2A	T52
17	Albury Sewerage	Economic	Infrastructure	Very High	2A	(3)
18	Gas Pipeline Valve	Economic	Infrastructure	Very High	2A	T25,45
19	Albury Waste Transfer Station	Economic	Infrastructure	Very High	2A	(4)
20	Albury Lifestyle Village	Human	Residential	Very High	2A	T30,52
21	One Tree Hill Communications Site	Economic	Infrastructure	Very High	2A	T14,36,51
29	Monument Hill Interface	Human	Residential	Very High	2A	T13,14
30	Yamba Ave Interface	Human	Residential	Very High	2A	(5)
31	Riverina Institute of TAFE	Human	Special Fire	Very High	2A	(6)
32	Henty Hospital	Human	Special Fire	Very High	2A	(7)
33	Myoora Hostel	Human	Special Fire	Very High	2A	(8)
40	Twelve Mile Reserve	Human	Other	Very High	2A	T18,41
41	Henty North Interface	Human	Residential	Very High	2A	T15,30,32
42	Flora	Environment	Endangered	Very High	2A	T59
48	Fauna	Environment	Endangered	Very High	2A	T59
49	Fauna	Environment	Endangered	Very High	2A	T59
50	Fauna	Environment	Endangered	Very High	2A	T59
51	Fauna	Environment	Endangered	Very High	2A	T59
52	Riverina Highway	Economic	Infrastructure	Very High	2A	T16
53	Olympic Highway	Economic	Infrastructure	Very High	2A	T16
63	Tree Modification	Cultural	Aboriginal	Very High	2A	T59
64	Tree modification	Cultural	Aboriginal	Very High	2A	T59
65	Tree modification	Cultural	Aboriginal	Very High	2A	T59
66	Tree Modification	Cultural	Aboriginal	Very High	2A	T59
67	Tree Modification	Cultural	Aboriginal	Very High	2A	T59
68	Scarred Tree	Cultural	Aboriginal	Very High	2A	T59
69	Tree Modification	Cultural	Aboriginal	Very High	2A	T59
78	Tree Modification	Cultural	Aboriginal	Very High	2A	T59
79	Tree Modification	Cultural	Aboriginal	Very High	2A	T59
80	Tree Modification	Cultural	Aboriginal	Very High	2A	T59
81	Tree Modification	Cultural	Aboriginal	Very High	2A	T59
82	Tree Modification	Cultural	Aboriginal	Very High	2A	T59
83	Tree Modification	Cultural	Aboriginal	Very High	2A	T59
84	Henty Retirement Village	Human	Residential	Very High	2A	(9)
85	Brookleby Public School	Human	Special Fire	Very High	2A	(10)
86	Walbundrie Public School	Human	Special Fire	Very High	2A	(11)
87	Burumbuttock Public School	Human	Special Fire	Very High	2A	(12)
88	Splitters Creek	Human	Residential	Very High	2A	(13)
100	St Paul's Lutheran School, Henty	Human	Special Fire	High	3A	T19,64,49
121	St Paul's College	Human	Special Fire	High	3A	T32,62
123	Walla Walla Public School	Human	Special Fire	High	3A	T49,32,33
126	St John's Lutheran Primary School	Human	Special Fire	High	3A	(14)
127	Greater Hume Child Care Services	Human	Special Fire	High	3A	T32
128	St Mary McKillop Catholic School	Human	Special Fire	High	3A	T32,33,62
151	West Albury Interface	Human	Residential	High	3A	(15)
173	Hamilton Valley Estate	Human	Residential	High	3A	T73
180	Himalaya Estate	Human	Residential	High	3A	T74,75
190	Monument Hill West Interface	Human	Residential	High	3A	T69,70,63
191	Golview Interface	Human	Residential	High	3A	T70,69
192	Glenny Interface	Human	Residential	High	3A	(16)
193	Norris Park West	Human	Residential	High	3A	(17)
194	Norris Park East	Human	Residential	High	3A	(18)
195	Monument Hill Reserve Interface	Human	Residential	High	3A	T69,70
240	Gerogery Interface 1	Human	Residential	High	3A	T69
241	Gerogery Interface 2	Human	Residential	High	3A	T69
242	Calcairn Interface	Human	Residential	High	3A	T69
243	Walbundrie Interface	Human	Residential	High	3A	T69,63
244	Brookleby Interface	Human	Residential	High	3A	T69
245	Burumbuttock Interface	Human	Residential	High	3A	T69,63
246	Jindera Interface	Human	Residential	High	3A	T69
249	Centaur Rd Interface	Human	Residential	High	3A	T73
250	Urana Rd Interface	Human	Residential	High	3A	T73
251	Central Reserve Road Interface	Human	Residential	High	3A	T73
252	Bungowannah NSP	Human	Other	High	3A	T65
259	Henty West Interface	Human	Residential	High	3A	T70,69
263	Gerogery West	Human	Residential	High	3A	T63,69
317	Lutheran Aged Care	Human	Special Fire	Medium	4	T78
318	Albury Wodonga Private Hospital	Human	Special Fire	Medium	4	T78
329	St Josephs Primary School, Culcairn	Human	Special Fire	Medium	4	T78
333	Henty Public School	Human	Special Fire	Medium	4	T78
334	Henty Pre-school	Human	Special Fire	Medium	4	T78
344	Brookleby NSP	Human	Other	Medium	4	T77
345	Walbundrie NSP	Human	Other	Medium	4	T76
357	Walla Walla NSP	Human	Other	Medium	4	T77
358	Lavington Oval NSP	Human	Other	Low	NA	T77
368	Jindera Public School	Human	Special Fire	Low	NA	T80
385	Burumbuttock NSP	Human	Other	Low	NA	T77
389	Jindera NSP	Human	Other	Low	NA	T77
390	Urana Rd NSP	Human	Other	Low	NA	T77
391	Burumbuttock NSP	Human	Other	Low	NA	T77
393	QEII Square NSP	Human	Other	Low	NA	T77
394	Springdale Heights NSP	Human	Other	Low	NA	T77
397	Culcairn NSP	Human	Other	Low	NA	T77
398	Henty NSP	Human	Other	Low	NA	T77

(1) T19,52,33,32

(2) T15,29,32,53

(3) T13,20,50,15

(4) T13,50,37,15

(5) T13,36,35,37

(6) T52,46,15,37,38

(7) T15,30,32,48

(8) T15,30,32,48

(9) T15,32,30,37

(10) T16,6,4,0,2,3,22



Assets

- Human - Residential
- Human - Other
- Special Fire Protection
- Economic - Agricultural
- Economic - Infrastructure
- Economic - Tourism and Recreational
- Economic - Mines
- Commercial - Private
- Drinking Water Catchments
- Environmental - Locally Important
- Environmental - Wharfedale (Species)
- Environmental - Endangered (Species)
- Cultural - Aboriginal Heritage
- Cultural - Other
- Cultural - Non-Indigenous

Bush Fire Management Zones

- Fire Exclusion Zone (FEZ)
- Asset Protection Zone (APZ)
- Land Management Zone (LMZ)
- Strategic Fire Advantage Zone (SFAZ)

Base Data Layers

- Major Roads Sealed
- Major Roads Unsealed
- Secondary Road Sealed
- Secondary Road Unsealed
- Local Road Sealed
- Local Road Unsealed
- Local Road Unspecified
- AVD Track Unspecified
- Path
- Heavy Rail
- Light Rail
- Heavy Rail Ditching
- Drainage Perennial
- Drainage Non-Perennial
- Hydro-Line Perennial
- Hydro-Line Non-Perennial
- Contour (10m)
- Contour (5m)
- Map Display Area
- Local Government Area
- Crown Land
- State Forests
- National Park

*Note - Some base data layers may not be displayed on map

ID	Treatment strategy	Action	Agencies (Support)
T12	Preparedness	Undertake awareness training for fire-fighters	RFS
T13	Hazard Reduction	Spray/Slash	LGA
T14	Hazard Reduction	Spray/Slash	TI CL
T15	Hazard Reduction	Undertake Annual LGA HR program	LGA
T16	Hazard Reduction	Undertake roadside works program	RMS (LGA)
T18	Hazard Reduction	Grazing	LLS
T19	Preparedness	Undertake Duty of Care Inspection Annually	RFS
T20	Hazard Reduction	Spray/Slash/Graze	LGA
T24	Hazard Reduction	Spray/Slash	Electricity Authority
T25	Hazard Reduction	Spray/Slash	Gas Authority
T29	Community Education	Implement Community Engagement Strategy	RFS
T30	Community Education	Implement Community Engagement Strategy	FRNSW
T32	Community Education	Ensure Community Response Plans are current	RFS
T33	Community Education	School Visit	RFS
T35	Community Education	CFU	FRNSW
T38	Preparedness	Fire Trail Maintenance	TI CL (Private)
T37	Preparedness	Fire Trail Maintenance	LGA
T38	Preparedness	Fire Trail Maintenance	OEH
T41	Preparedness	Patrol	DPI
T45	Property Planning	Retrfit	Gas Authority
T46	Property Planning	Emergency Fire and Relocation Plans	Riverina Institute of TAFE
T48	Property Planning	Emergency Fire and Relocation Plans	Health NSW
T49	Property Planning	Emergency Fire & Relocation Plans	Department of Education
T50	Ignition Management	Restrict Access	LGA
T51	Ignition Management	Restrict Access	TI CL
T52	Hazard Reduction	Spray/Slash	Riverina Institute of TAFE

ID	Treatment strategy	Action	Agencies (Support)
T53	Property Planning	Emergency Fire & Relocation Plans	Private
T54	Property Planning	Retrofit	Department of Education
T55	Hazard Reduction	Low Intensity Burn	TI CL (RFS)
T56	Hazard Reduction	Low Intensity Burn	LGA (RFS)
T58	Community Education	Community Awareness	RFS
T59	Preparedness	Undertake awareness training for fire fighters	RFS
T62	Property Planning	Maintain Emergency Fire and Relocation Plans	Private Schools (RFS)
T63	Hazard Reduction	Spray/Slash/Burn	TI CL
T64	Community Education	School Visit	FRNSW
T65	Hazard Reduction	Maintain Fuel Load in line with NSP Guidelines	Bungowannah Tennis Club & Hall
T69	Hazard Reduction	Spray/Slash/Burn	LGA
T70	Preparedness	Fire Trail Maintenance	LGA
T73	Preparedness	Fire Trail Maintenance	TI CL
T74	Hazard Reduction	Low Intensity Burn	LLS (RFS)
T75	Preparedness	Inspect and Maintain Fire Trail (LLS)	LLS
T76	Hazard Reduction	Spray/Slash	Walbundrie Sports Ground
T77	Hazard Reduction	Spray/Slash	LGA
T78	Community Education	Community Awareness	FRNSW
T80	Community Education	School Visit	RFS

Asset Protection Zone	Purpose	Suppression	Zone
Asset Protection Zone	To protect human life, property and highly valued public assets and values.	To enable the safe use of Direct Attack suppression strategies within the zone.	As per RFS document Standards for Asset Protection Zones.
Strategic Fire Advantage Zone	To provide strategic areas of fire protection advantage which will reduce the speed and intensity of bush fires, and reduce the potential for spot fire development. To aid containment of wildfires to existing management systems.	To improve the likelihood and safe use of Parallel Attack suppression strategies within the zone. Aspect - Spotting propensity - Location of adjacent fire breaks - Mosaic pattern of treatment - Assess Overall Fuel Hazard (OFH) once vegetation communities reach minimum fire thresholds within this plan. Management practices should aim to achieve mosaic fuel reduction patterns so that the majority of the SFAZ has an OFH of less than high.	Zone width related to suppression objectives and dependent upon: - Topography - Aspect - Spotting propensity - Location of adjacent fire breaks - Mosaic pattern of treatment - Assess Overall Fuel Hazard (OFH) once vegetation communities reach minimum fire thresholds within this plan. Management practices should aim to achieve mosaic fuel reduction patterns so that the majority of the SFAZ has an OFH of less than high.
Land Management Zone	To meet relevant land management objectives in area where APZs or SFAZs are not appropriate.	As per the land management and fire protection objectives of the responsible land management agency. To reduce the likelihood of spread of fires. To undertake mosaic burning.	As appropriate to achieve land management, e.g. heritage and/or fire protection e.g. broad scale mosaic burning objectives.
Fire Exclusion Zone	To exclude bush fires.	NA	Variable dependent on size of fire sensitive area requiring protection.

Disclaimer

The Hume Zone BFMC makes every effort to ensure the quality of the information available on this map. Before relying on the information on this map, users should carefully evaluate its accuracy, currency or completeness of the information. Copyright: Hume Zone BFMC 2017.

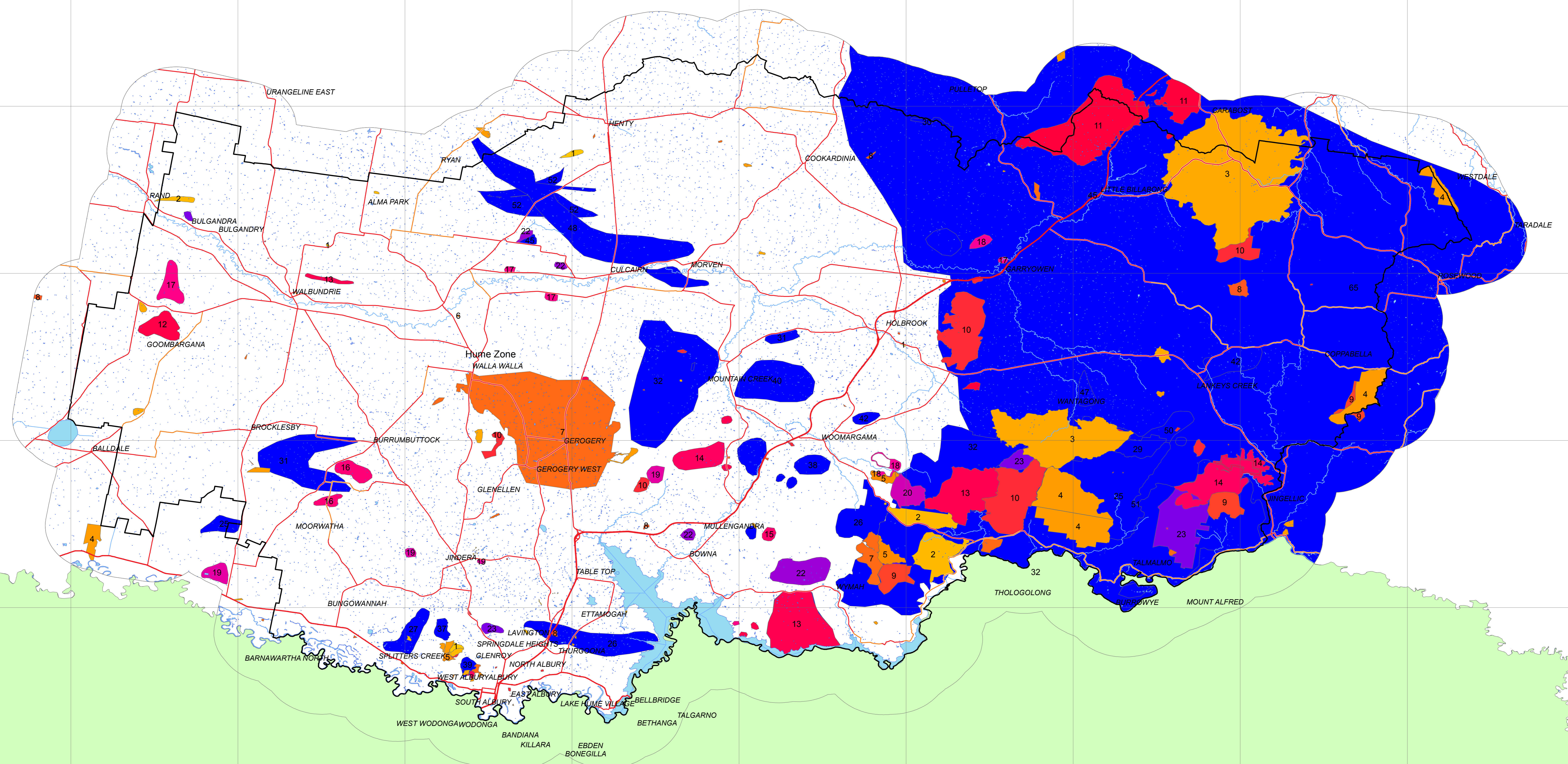
The Hume Zone BFMC can not guarantee and assumes no legal liability or responsibility for the accuracy, currency or completeness of the information. Copyright: Hume Zone BFMC 2017.

Authorized by: of Hume Zone BFMC.
Date created: Friday, 28 April 2017
BFRF version 2.1.26.0

Hume Zone BFMC

Time Since Fire

Number of years since last burnt (November 2016 Data)



Legend

Time Since Fire (November 2016)

- 0
- 1
- 2
- 3
- 4
- 5
- 6
- 7
- 8
- 9
- 10
- 11
- 12
- 13
- 14
- 15
- 16
- 17
- 18
- 19
- 20
- 21
- 22
- 23
- 24
- 25 +

Major Roads

- Major Road Sealed
- Major Road Unsealed
- Secondary Road Sealed
- Secondary Road Unsealed

Hydrology

- Hydro-Line Perennial
- Drainage Perennial

Jurisdiction

- Jurisdiction
- BFMC 5km Buffer
- Other States
- NSW

Data Dictionary:

Data Type	Source	Date
BFMC Boundaries (incl 5km Buffer)	NSW RFS	November 2016
Towns or Locations	NSW LPI	November 2016
Road Network	NSW LPI	November 2016
Drainage	NSW LPI	November 2016
Fire History	NSW RFS	November 2016
State Backdrop	NSW LPI	November 2016

Disclaimer:

The NSW Rural Fire Service makes every effort to ensure the quality of the information available on this map. Before relying on the information on this map, users should carefully evaluate its accuracy, currency, completeness and relevance for their purposes, and should obtain any appropriate professional advice relevant to their particular circumstances.

The NSW Rural Fire Service can not guarantee and assumes no legal liability or responsibility for the accuracy, currency or completeness of the information.

Date Created: 23/11/2016 Created By: GIS Support

2016 NSW Rural Fire Service

1:190,000 @ A0

