

Bush Fire Preparation Map



Clandulla

WORKS PROGRAM

Map Ref No.	Strategy	Action	Responsible Agency
Clandulla Village	Community Education	Conduct Community Education Activity	RFS
1	Hazard Reduction	Inspect and maintain HR works in identified SFAZs.	SF, LGA, RFS, Pvte
2	Hazard Reduction	Inspect and maintain HR works in identified APZs.	LGA, Pvte
A	Hazard Reduction	Establish boundary APZ and Village Roadside vegetation APZs.	LGA
B	Hazard Reduction	Establish Transport Corridor maintenance programs.	LGA, ARTC/ John Holland
C	Hazard Reduction	Establish infrastructure / facility APZ maintenance programs.	Other
D	Hazard Reduction	Establish, inspect and maintain HR works in proposed identified SFAZs.	SF, LGA, RFS, Pvte



Zone	Purpose	Suppression Objectives	Zone Characteristics
Asset Protection Zone	To protect human life, property and highly valued public assets and values.	To enable the safe use of Direct Attack suppression strategies within the zone. To minimise bush fire impacts on undefendable assets.	As per RFS document Standards for Asset Protection Zones.
Strategic Fire Advantage Zone	To provide strategic areas of fire protection advantage which will reduce the speed and intensity of bush fires, and reduce the potential for spot fire development. To aid containment of wildfires to existing management boundaries.	To improve the likelihood and safe use of Parallel Attack suppression strategies within the zone. Indirect Attack (back burning) in high to very high fire weather conditions within the zone. To reduce the likelihood of Crown fire development within the zone. and/or Spot fire ignition potential from the zone.	Zone width related to suppression objectives and dependant upon: •Topography •Aspect •Spotting propensity •Location of adjacent firebreaks •Mosaic pattern of treatment •Assess Overall Fuel Hazard (OFH) once vegetation communities reach minimum fire thresholds within this plan. Management practices should aim to achieve mosaic fuel reduction patterns so that the majority of the SFAZ has an OFH of less than high.
Resident Preparation Zone	To identify that residents / property owners have a vital role to play in bush fire risk management and that they are responsible for their own property preparedness.	To increase the preparedness of residents for bush fire and ensure that vegetation in close proximity to residential assets are adequately maintained. To provide a defensible space for residents / fire fighters and complement hazard reduction works carried out within Asset Protection Zones / Strategic Fire Advantage Zones.	Residents / property owners should strive to achieve a 'Fire-Safe' property as outlined in the illustration above. Concerns regarding the bush fire safety of neighbouring properties should be raised with the NSW Rural Fire Service.

LEGEND

- Proposed Asset Protection Zone (Yellow hatched)
- Proposed Strategic Fire Advantage Zone (Blue hatched)
- Asset Protection Zone (Orange hatched)
- Strategic Fire Advantage Zone (Purple hatched)
- Proposed Hazard Reduction (Pink hatched)
- Residential Preparation Zone (Light pink)
- RFS Stations (Red house icon)
- Hydrant (Blue circle icon)
- Neighbourhood Safer Place (Green house icon)
- Road (Grey line)
- Heavy Rail (Black line with cross-ticks)
- Electricity Transmission Line (Black line with triangles)
- Year of Fire / HR (Color key: 2013 grey, 2015 green, 2021 yellow)
- Fire Access & Fire Trail (Red line)
- Strategic (Blue line)
- Tactical (Yellow line)

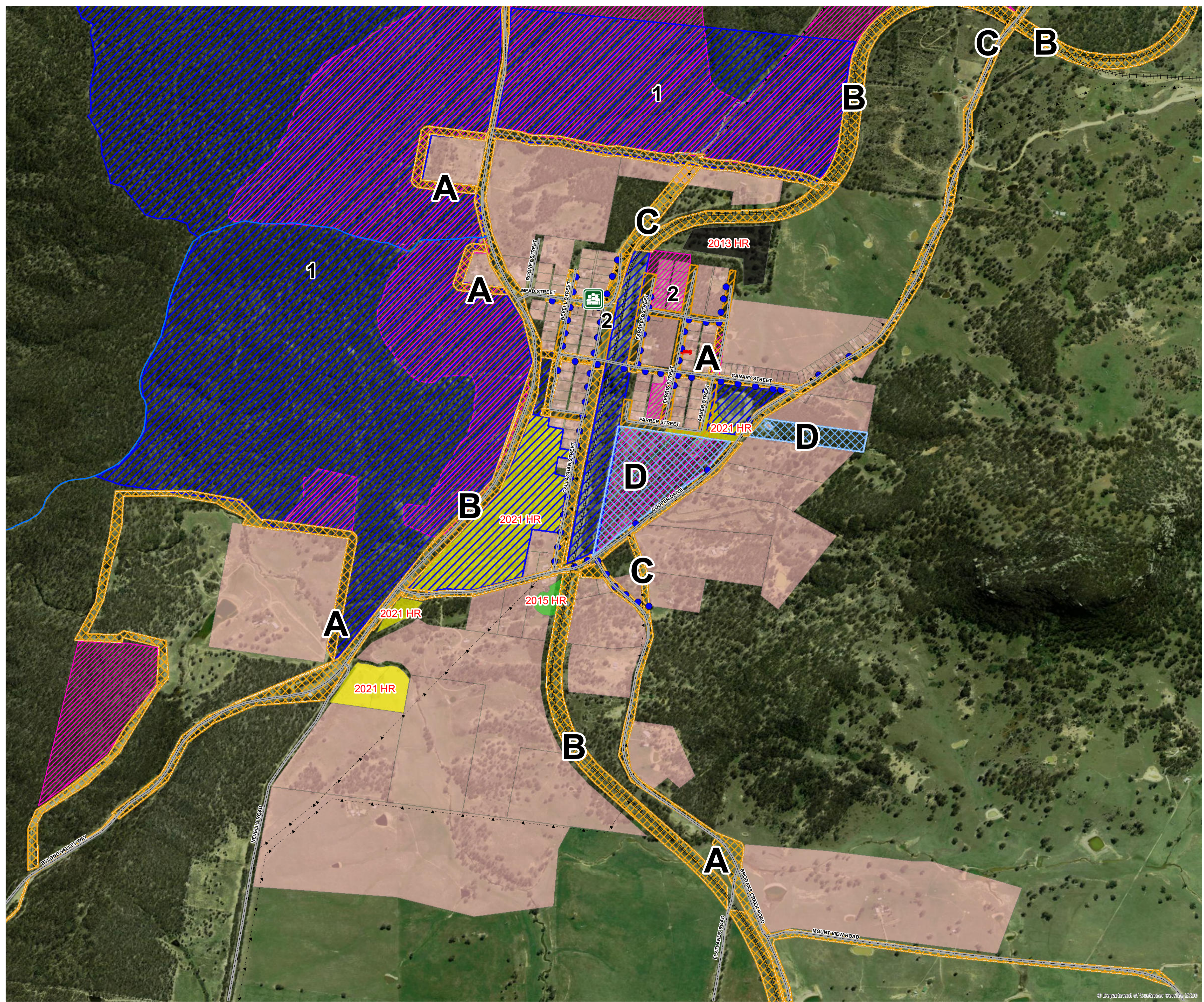
PRODUCTION INFORMATION

Base Data: LPMa Cadastre and Topo Database
Map Projection: GCS GDA 1984
Print Date: 24 March 2022
Produced by: NSW RFS Planning & Environment Services East
BFMC Approved: 31 March 2022

BUSH FIRE INFORMATION LINE
1800 NSW RFS
1800 679 737
www.rfs.nsw.gov.au

WARNING INFORMATION

- This map has been prepared by the NSW Rural Fire Service ("The Service") using data supplied to it by other agencies and entities. See the "Data Dictionary" for further information about the sources of this data.
- The Service has not verified or checked the data used to prepare this map. The map may contain errors and omissions. The Service has not made any attempt to ground truth the map.
- There will be a margin of error in relation to the location of features recorded on the map. The Service is unable to specify the extent or magnitude of that margin of error.
- Significant changes may have occurred:
 - In the time between which the data was originally collected and the map produced; and
 - Since the map was produced.
- Users must, wherever possible, ground truth the map before relying on it or the accuracy of the map or the information recorded on the map for any purpose.
- The Service accepts no responsibility for any injury loss or damage arising from the use of this map or any errors or omissions in the information recorded on the map.



GET READY FOR A BUSH FIRE

There are four simple steps to get ready for a bush fire

- DISCUSS** (Icon: Two people talking)
- PREPARE** (Icon: House)
- KNOW** (Icon: Flame)
- KEEP** (Icon: Smartphone)

Get prepared for the Bush Fire Season and make your Bush Fire Survival Plan Now.

Go to www.myfireplan.com.au and discuss with your family what to do if a fire starts

