

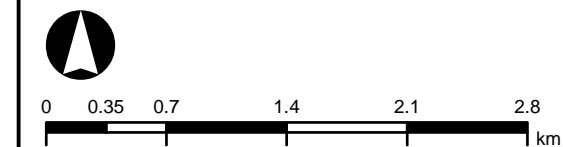


NSW RURAL FIRE SERVICE MAP BOOK

Wattamondara

LEGEND

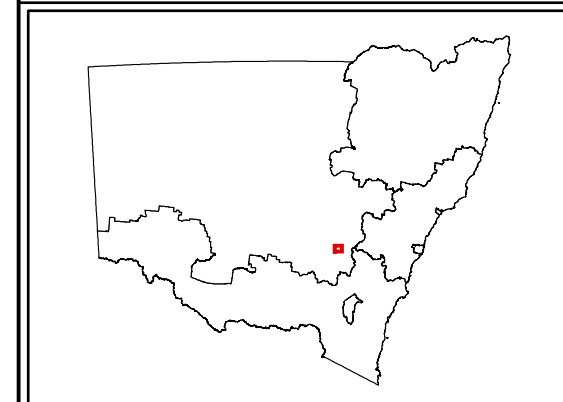
- RFS Region
- RFS District
- RFS Brigade
- RFS NSW RFS
- RFS NSW FB
- RFS NSW CFU
- RFS NSW AS
- RFS NSW PF
- RFS NSW SES
- Airport
- Helipad
- Marina
- Railway Station
- Education Facilities
- Hospitals
- Nursing Homes
- Water Hydrant
- Fire Trails
- Property Boundary
- BuiltUp Area
- Water Body
- National Parks
- State Forest
- Motorway
- Primary Road
- Arterial Road
- Sub Arterial Road
- Distributor Road
- Local Road
- Urban Service Lane
- Track-Vehicular
- Path
- Railway Lines
- Rivers
- 100m Contour
- 50m Contour
- 10/20m Contour



PRODUCTION INFORMATION

Map Projection	Datum	Zone
MGA	GDA94	55
Produced By	Production Date/Time	
NSW RFS GIS UNIT	2010.04.16 23:39.48	

KEY MAP

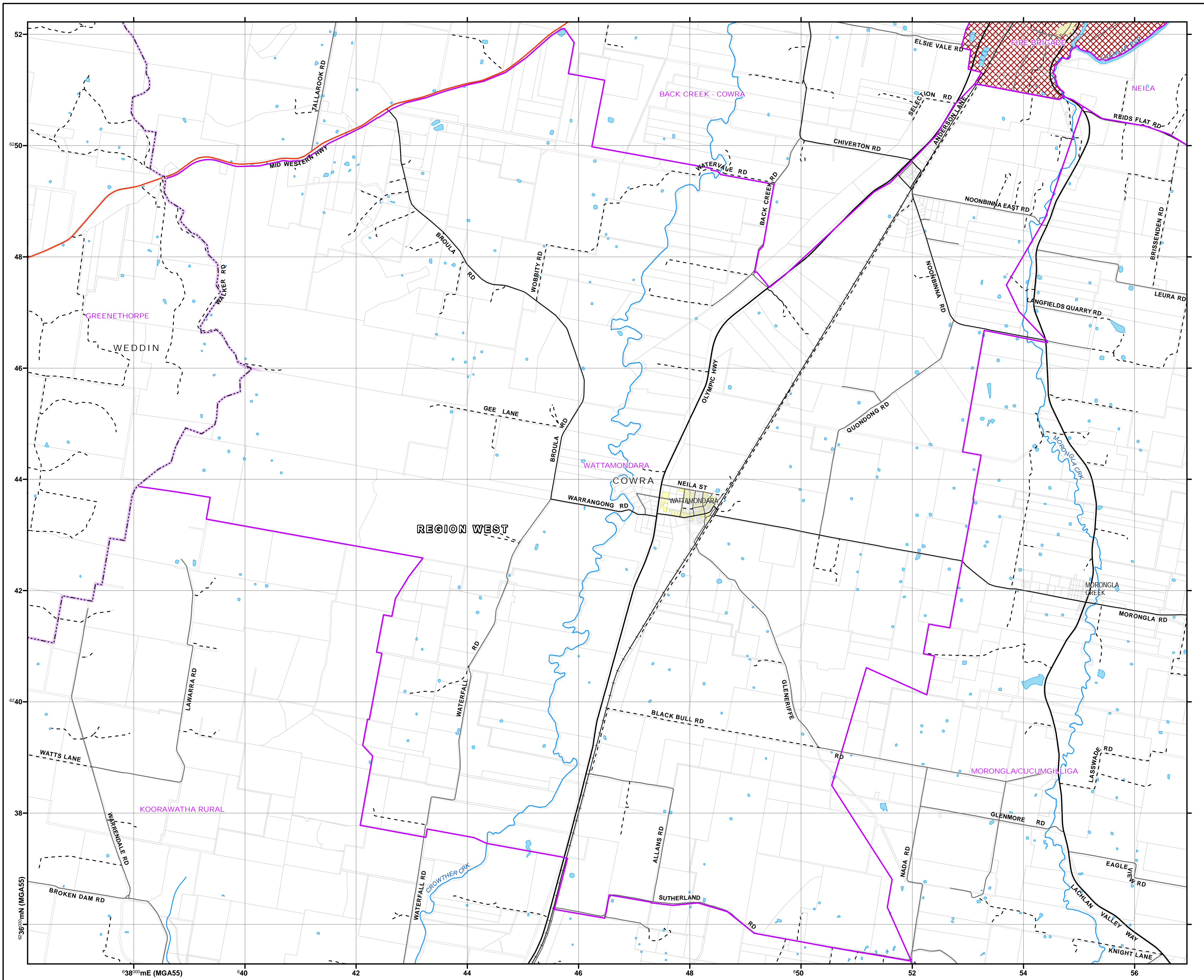


WARNING INFORMATION

1. This map has been prepared by the NSW Rural Fire Service ("the Service") using data supplied to it by other agencies and entities.
2. The Service has not verified or checked the data used to prepare this map. This map may contain errors and omissions. The Service has not made any attempt to ground truth the map.
3. There will be a margin of error in relation to the location of features recorded on the map. The service is unable to specify the extent or magnitude of that margin or error.
4. Significant changes may have occurred:
 - i. in the time between which the data was originally collected and the map produced; and
 - ii. since the map was produced.
5. Users must, wherever possible, ground truth the map before relying on it or the accuracy of the map or the information recorded on the map for any purpose.
6. The Service accepts no responsibility for any injury, loss, or damage arising from the use of this map or any errors or omissions in the information recorded on the map.

BASE DATA SUPPLIED BY

Australian Government, 2009



52
50
48
46
44
42
40
38
36
34
32
30
28
26
24
22
20
18
16
14
12
10
8
6
4
2

36°00' mN (MGA55)

38°00' mE (MGA55)

40

42

44

46

48

50

52

54

56