

Bush Fire Preparation Map



Warialda

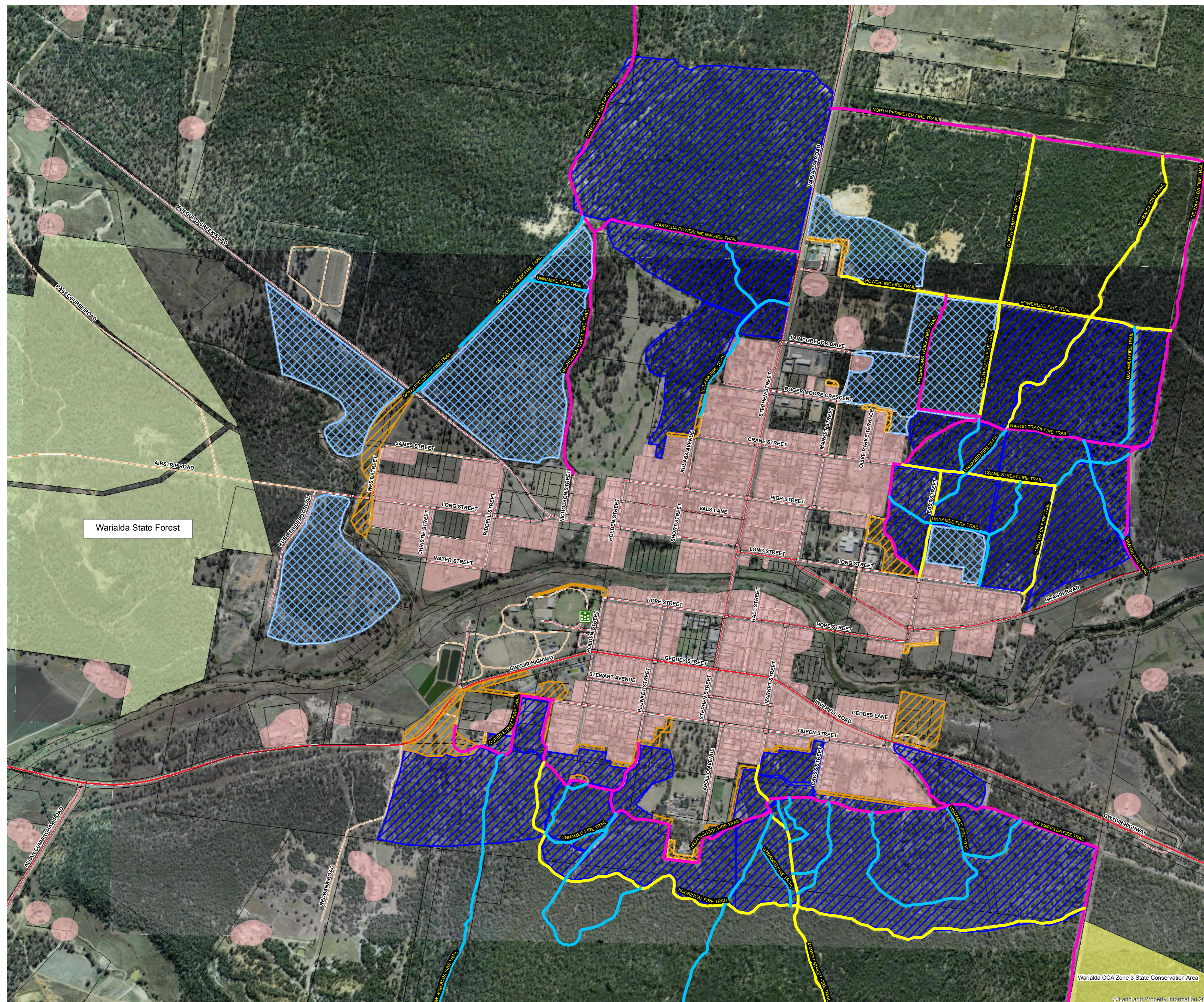
WORKS PROGRAM

Map Reference	Treatment Strategy	Action	Responsible Agency	Support Agency	Timeframe
	Hazard Reduction	Inspect and maintain Strategic Fire Advantage Zones	According to tenure: Local Land Services, Dept Industry - Lands/Forestry Corporation NSW/private landholders and leaseholders.	NSW Rural Fire Service/Fire and Rescue NSW/National Parks and Wildlife Service	Inspect annually. Overall fuel hazard levels maintained below high
	Hazard Reduction	Maintain Asset Protection Zones	According to tenure: Gwydir Shire Council/Local Land Services/Dept Industry - Lands/Forestry Corporation NSW	NSW Rural Fire Service/Fire and Rescue NSW	Ongoing
	Property Planning	Inspect and maintain the Neighbourhood Safer Place as per RFS guidelines	Gwydir Shire Council/NSW Rural Fire Service	Fire and Rescue NSW	Annual Inspection
	Property Planning	Apply Warialda State Forest Plan of Management	Forestry Corporation NSW	N/A	Ongoing
	Property Planning	Apply Warialda State Conservation Area Plan of Management	Office of Environment and Heritage; NPWS	NSW Rural Fire Service	Ongoing
N/A	Preparedness	Inspect and maintain strategic fire trails	According to tenure: Local Land Services/Dept Industry - Lands/Forestry Corporation NSW/National Parks and Wildlife Service/Gwydir Shire Council.	NSW Rural Fire Service	Maintain as per Bush Fire Coordinating Committee policy
N/A	Preparedness	Response Pre-Incident Planning	Warialda Rural Fire Brigade/Fire and Rescue NSW	NSW Rural Fire Service	Ongoing
N/A	Preparedness	Complete a Bush Fire Survival Plan	Warialda residents	NSW Rural Fire Service/Fire and Rescue NSW	2016/17
N/A	Preparedness	Maintain Residential Preparation Zones	Warialda residents	NSW Rural Fire Service/Fire and Rescue NSW	Ongoing
N/A	Community Education	Targeted community engagement / education program	NSW Rural Fire Service/Fire and Rescue NSW	Gwydir Shire Council	2016/17

Is your property fire-safe?



1. Cut back any overhanging trees or shrubs and dispose of cuttings appropriately.
2. Check the condition of your roof and replace any damaged or missing tiles.
3. Clean leaves from the roof, gutters and downpipes and fit quality metal leaf guards.
4. Non-combustible fences are the most effective at withstanding the intense heat generated by bush fire.
5. Plant trees and shrubs that are less likely to ignite due to their low oil content.
6. If you have a water tank, dam or swimming pool, consider installing a Static Water Supply sign (SWS).
7. Enclose sub-floor areas.
8. Store wood piles well away from the house and keep covered.
9. Keep garden mulch away from the house and keep grass short.
10. Make sure the pressure relief valves on LPG cylinders face outdoors.
11. Ensure you have a hose which is long enough to reach every part of the home.
12. Remove and store any flammable items away from the house.
13. Install metal fly-wire or solid screens to the outside windows and doors.
14. Have a non-combustible doormat.



Zone	Purpose	Suppression Objectives	Zone Characteristics
Asset Protection Zone	To protect human life, property and highly valued public assets.	To enable the safe use of Direct Attack suppression strategies within the zone. To minimise bush fire impacts on undefendable assets.	As per RFS document Standards for Asset Protection Zones.
Strategic Fire Advantage Zone	To provide strategic areas of fire protection advantage which will reduce the speed and intensity of bush fires, and reduce the potential for spot fire development; To aid containment of bush fires to existing management boundaries.	To improve the likelihood and safe use of: Parallel Attack suppression strategies within the zone, and/or Indirect Attack (back burning) in high to very high fire weather conditions within the zone. To reduce the likelihood of: Crown fire development within the zone, and/or Spot fire ignition potential from the zone.	Zone width related to suppression objectives and dependant upon: *Topography *Aspect *Spotting propensity *Location of adjacent firebreaks *Mosaic pattern of treatment *Assess Overall Fuel Hazard (OFH) once vegetation communities reach minimum fire thresholds within this plan. Management practices should aim to achieve mosaic fuel reduction patterns so that the majority of the SFAZ has an OFH of less than high.
Residential Preparation Zone	To identify that residents / property owners have a vital role to play in bush fire risk management and that they are responsible for their own property preparedness.	To increase the preparedness of residents for bush fire and ensure that vegetation in close proximity to residential assets is adequately maintained. To provide a defendable space for residents / fire fighters and complement hazard reduction works carried out within Asset Protection Zones / Strategic Fire Advantage Zones.	Residents / property owners should strive to achieve a 'Fire-Safe' property as outlined in the illustration above. Concerns regarding the bush fire safety of neighbouring properties should be raised with the NSW Rural Fire Service.

LEGEND

- Proposed Asset Protection Zone
- Proposed Strategic Fire Advantage Zone
- Asset Protection Zone
- Strategic Fire Advantage Zone
- Neighbourhood Safer Place
- FireTrail Essential
- FireTrail Important
- FireTrail Dormant
- Residential Preparation Zone

PREPARE. ACT. SURVIVE.

BUSH FIRE INFORMATION LINE
1800 NSW RFS
1 8 0 0 6 7 9 7 3 7
www.rfs.nsw.gov.au

EMERGENCY

PRODUCTION INFORMATION

Base Data: LPMI Cadastral and Topographical Database
 Map Projection: GCS GDA 1984
 Print Date: April 2017
 Produced by: NSW Rural Fire Service

BFMC Approved: September 2016

- WARNING INFORMATION**
1. This map has been prepared by the NSW Rural Fire Service ("The Service") using data supplied to it by other agencies and entities. See the 'Data Dictionary' for further information about the sources of this data.
 2. The Service has not verified or checked the data used to prepare this map. The map may contain errors and omissions. The Service has not made any attempt to ground truth the map.
 3. There will be a margin of error in relation to the location of features recorded on the map. The Service is unable to specify the extent or magnitude of that margin of error.
 4. Significant changes may have occurred:
 - i. In the time between which the data was originally collected and the map produced; and
 - ii. Since the map was produced.
 5. Users must, wherever possible, ground truth the map before relying on it or the accuracy of the map or the information recorded on the map for any purpose.
 6. The Service accepts no responsibility for any injury loss or damage arising from the use of this map or any errors or omissions in the information recorded on the map.

**FIRE HAS A PLAN
DO YOU?**

**Get prepared for the Bush Fire Season and make your Bush Fire Survival Plan Now.
Go to www.myfireplan.com.au and discuss with your family what to do if a fire starts near you.**