

Bush Fire Preparation Map



Darke Forest

Works Program		
Map Ref No.	Strategy	Action
Darke Forest (map area)	Community Education	Conduct Community Education Activities
Darke Forest (map area)	Preparedness	Maintain Fire Trails
Darke Forest (map area)	Hazard Reduction	APZ Maintenance
Darke Forest (map area)	Hazard Reduction	APZ Maintenance
Darke Forest (map area)	Hazard Reduction	Implement SFAZ mosaic burn program
Darke Forest (map area)	Hazard Reduction	Implement SFAZ mosaic burn program
Darke Forest (map area)	Preparedness	Maintain Fire Trails
A1	Hazard Reduction	Vegetation maintenance around infrastructure
A2	Hazard Reduction	APZ Maintenance
A3	Hazard Reduction	Vegetation maintenance around Sub station
A4	Hazard Reduction	Vegetation maintenance around infrastructure
Fire Trails	Preparedness	Maintain Fire Trails

Community assets and infrastructure at risk	
Map Ref	Asset Name
Map Area	Darke Forest Residential
A1	Darke Forest Private School
A4	Darke Forest Community Hall
A2	Glenferrie Orchard
A3	Darke Forest Sub Station

Proposed HR	
Map Ref	HR name
A	SADA Maddens Plains
B	Darke Forest North
C	Sub Station
D	Darke Forest Riding
E	Darke Forest Dharawal - Dahlia
F	Darke Forest West



Zone	Purpose	Suppression Objectives	Zone Characteristics
Asset Protection Zone 	To protect human life, property and highly valued public assets and values.	To enable the safe use of Direct Attack suppression strategies within the zone. To minimise bush fire impacts on undefendable assets.	As per RFS document Standards for Asset Protection Zones.
Strategic Fire Advantage Zone 	To provide strategic areas of fire protection advantage which will reduce the speed and intensity of bush fires, and reduce the potential for spot fire development. To aid containment of wildfires to existing management boundaries.	To improve the likelihood and safe use of Parallel Attack suppression strategies within the zone. To reduce the likelihood of Indirect Attack (back burning) in high to very high fire weather conditions within the zone. To reduce the likelihood of Crown fire development within the zone. Spot fire ignition potential from the zone.	Zone width related to suppression objectives and dependant upon: •Topography •Aspect •Spotting propensity •Location of adjacent firebreaks •Mosaic pattern of treatment •Assess Overall Fuel Hazard (OFH) once vegetation communities reach minimum fire thresholds within this plan. Management practices should aim to achieve mosaic fuel reduction patterns so that the majority of the SFAZ has an OFH of less than high.
Resident Preparation Zone 	To identify that residents / property owners have a vital role to play in bush fire risk management and that they are responsible for their own property preparedness.	To increase the preparedness of residents for bush fire and ensure that vegetation in close proximity to residential assets are adequately maintained. To provide a defensible space for residents / fire fighters and complement hazard reduction works carried out within Asset Protection Zones / Strategic Fire Advantage Zones.	Residents / property owners should strive to achieve a 'Fire-Safe' property as outlined in the illustration above. Concerns regarding the bush fire safety of neighbouring properties should be raised with the NSW Rural Fire Service.

LEGEND	
	Proposed Asset Protection Zone
	Proposed Strategic Fire Advantage Zone
	Asset Protection Zone
	Strategic Fire Advantage Zone
	Proposed Hazard Reduction
	Residential Preparation Zone
	Proposed Fire Trail
	Fire Trail

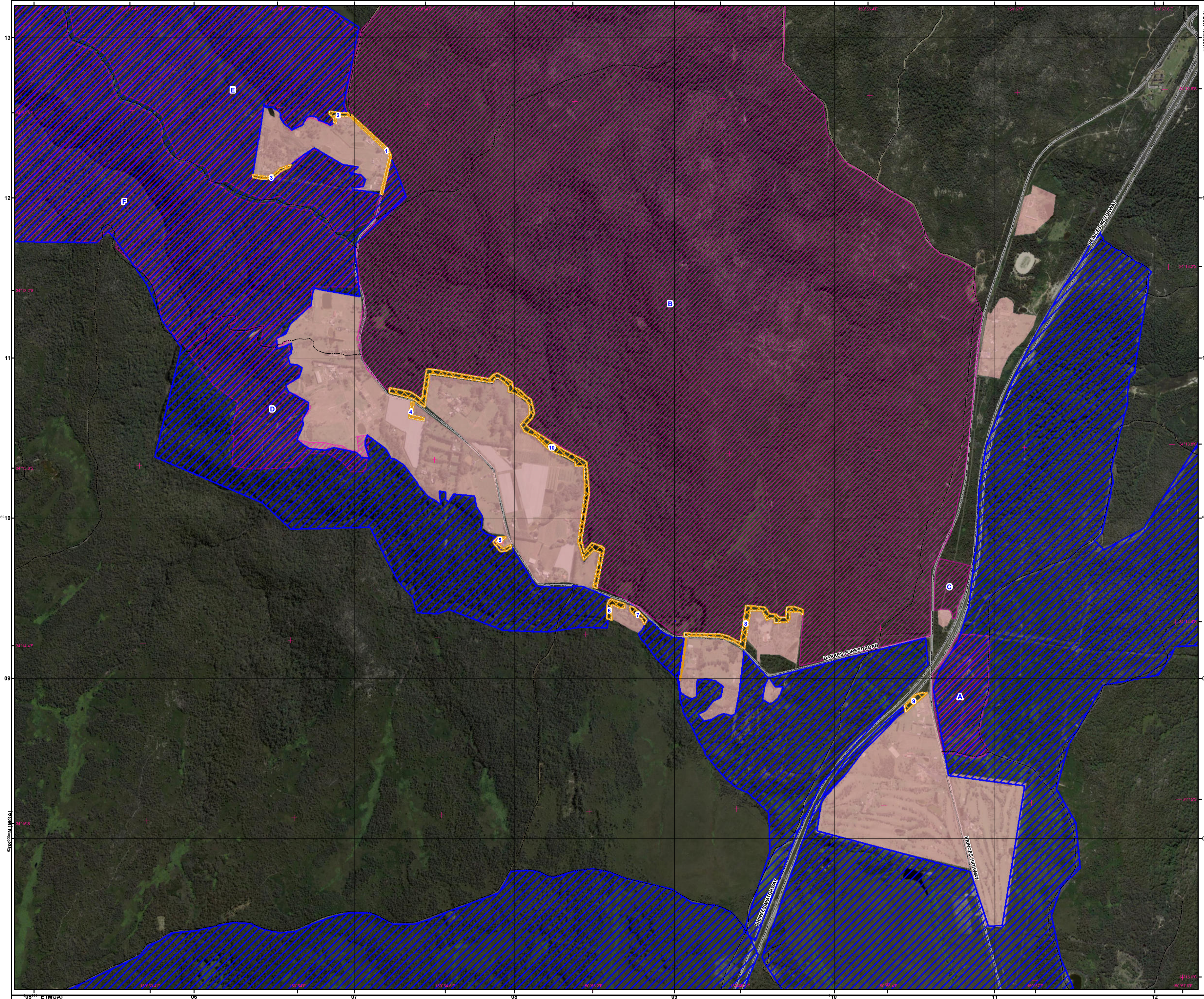
PREPARE. ACT. SURVIVE.

BUSH FIRE INFORMATION LINE
1800 NSW RFS
1 8 0 0 6 7 9 7 3 7
www.rfs.nsw.gov.au

BUSH FIRE SERVICE
COOPERATING COMMUNITY

PRODUCTION INFORMATION	
Base Data: LPMA Cadastre and Topo Database Map Projection: GCS GDA 1994	Print Date: 7 February 2019 Produced by: Jim Killen 1 grid square = 1 km ² Scale: 1: 12,000
BFMC Approved: 5 February 2019	

- ### WARNING INFORMATION
- This map has been prepared by the NSW Rural Fire Service ("The Service") using data supplied to it by other agencies and entities. See the 'Data Dictionary' for further information about the sources of this data.
 - The Service has not verified or checked the data used to prepare this map. The map may contain errors and omissions. The Service has not made any attempt to ground truth the map.
 - There will be a margin of error in relation to the location of features recorded on the map. The Service is unable to specify the extent or magnitude of that margin of error.
 - Significant changes may have occurred.
 - In the time between which the data was originally collected and the map produced; and
 - Since the map was produced.
 - Users must, wherever possible, ground truth the map before relying on it or the accuracy of the map or the information recorded on the map for any purpose.
 - The Service accepts no responsibility for any injury loss or damage arising from the use of this map or any errors or omissions in the information recorded on the map.



GET READY FOR A BUSH FIRE
The are four simple steps to get ready for a bush fire:

Get prepared for the Bush Fire Season and make your Bush Fire Survival Plan Now.
Go to www.myfireplan.com.au and discuss with your family what to do if a fire starts near you.