

Shoalhaven Bush Fire Management Committee

Bush Fire Risk Management Plan

Authorisation

In accordance with Part 3 Division 4 of the Rural Fires Act 1997, this Plan has been prepared by the Shoalhaven Bush Fire Management Committee and has been endorsed at the BFMC meeting on 17 October 2018.

Recommended



7 NOV 18

Chairperson
Shoalhaven Bush Fire Management Committee

Approved



On behalf of the
NSW Bush Fire Co-ordinating Committee

Amendment List

Amendment		Entered	
Number	Date	Signature	Date

Page left blank

Table of Contents

<i>Chapter 1. Introduction</i>	8
1.1 Background	8
1.2 Aim and Objectives	8
1.3 Description of the Shoalhaven BFMC area	9
1.3.1 Location and land tenure	9
1.3.2 Climate and bush fire season	9
1.3.3 Population and demographic information	9
1.3.4 History of bush fire frequency and ignition cause	10
<i>Chapter 2. Identifying and assessing the bush fire risk</i>	11
2.1 Process	11
2.2 Communication and consultation	11
2.3 Identifying the bush fire risk	12
2.3.1 Assets	12
2.3.2 Assessing the bush fire risk - consequence	13
2.3.3 Assessing the bush fire risk - Likelihood	14
2.3.4 Identifying the level of risk	14
2.3.5 Evaluating the bush fire risk	14
2.3.6 Prioritising treatments	14
2.3.7 Risk acceptability	14
<i>Chapter 3. Treating the risk</i>	16
3.1 Bush Fire Management Zones	16
3.2 BFMC wide treatments	17
3.3 Asset specific treatments	19
3.4 Fire Thresholds	20
3.5 Annual works programs	21
3.6 Implementation	21
<i>Chapter 4. Performance monitoring and reviewing</i>	22
4.1 Review	22
4.2 Monitoring	22
4.3 Reporting	22
4.4 Performance Measurements	22

List of Tables

<i>Table 1.1 Land tenure</i>	9
<i>Table 3.1 Bush Fire Management Zones: Purpose, objectives and characteristics</i>	16
<i>Table 3.2 Asset specific treatments used in the (insert name here) BFMC area</i>	19
<i>Table 3.3 Fire Thresholds for Vegetation Categories</i>	20

List of Figures

<i>Figure 2.1 Overview of the risk assessment process</i>	11
---	----

Glossary

Assets: anything valued by the community which includes houses, crops, heritage buildings and places, infrastructure, the environment, businesses, and forests, that may be at risk from bush fire.

Bush Fire: a general term used to describe fire in vegetation, includes grass fire.

Bush Fire Hazard: the potential severity of a bush fire, which is determined by fuel load, fuel arrangement and topography under a given climatic condition.

Bush Fire Risk: the chance of a bush fire igniting, spreading and causing damage to the community or the assets they value.

Bush Fire Risk Management: a systematic process that provides a range of treatments which contribute to the wellbeing of communities and the environment, which suffer the adverse effects of wildfire/bush fire.

Bush Fire Threat: potential bush fire exposure of an asset due to the proximity and type of a hazard and the slope on which the hazard is situated.

Consequence: outcome or impact of a bush fire event.

Display area: geographic area determined by the Bush Fire Management Committee which is used to provide a suitable area and scale for community participation and mapping display purposes.

Fire Fighting Authorities: the NSW Rural Fire Service, NSW Fire Brigades, the National Parks and Wildlife Service and Forests NSW.

Fire Thresholds: Minimum threshold intervals between fire events are generally established by determining the minimum time-frames required for key plant species within an ecological community to reach reproductive maturity, whilst avoiding deleterious impacts to species diversity and habitat structures in the broader ecological community.

Likelihood: the chance of a bush fire igniting and spreading.

Major Bush Fire: A bush fire which requires the attendance of multiple brigades, or causes damage to property or injury to one or more persons.

Overall Fuel Hazard: refers to the Overall Fuel Hazard Guide as described in the document published by (Dept. of Sustainability and Environment 3rd ed.

Recovery costs: the capacity of an asset to recover from the impacts of a bush fire.

Risk Acceptance: an informed decision to accept the consequences and the likelihood of a particular risk.

Risk Analysis: a systematic process to understand the nature of and to deduce the level of risk.

Risk Assessment: the overall process of risk identification, risk analysis and risk evaluation.

Risk Identification: the process of determining what, where, when, why, and how something could happen.

Risk Treatment: the process of selection and implementation of measures to modify risk.

Vulnerability: the susceptibility of an asset to the impacts of bush fire.

Chapter 1. Introduction

1.1 Background

Under the *Rural Fires Act 1997* the Bush Fire Coordinating Committee (BFCC) must constitute a Bush Fire Management Committee (BFMC) for each area in the State that is subject to the risk of bush fires. Each BFMC is required to prepare and submit to the BFCC a Bush Fire Risk Management Plan (BFRMP).

A BFRMP is a strategic document that identifies community assets at risk and sets out a five-year program of coordinated multi-agency treatments to reduce the risk of bush fire to the assets. Treatments may include such things as hazard reduction burning, grazing, community education, fire trail maintenance and establishing community fireguard groups.

Annual programs to implement the treatments identified in this plan will be undertaken by the relevant land managers and fire fighting authorities.

In exercising its functions under the *Rural Fires Act 1997*, including the preparation of a bush fire risk management plan, the Shoalhaven BFMC is required to have regard to the principles of ecologically sustainable development (ESD).

This document and the accompanying maps together form the BFRMP for the Shoalhaven BFMC area.

This BFRMP has been prepared by the Shoalhaven BFMC and covers both public and private lands. This BFRMP must be reviewed and updated within each successive five-year period from the constitution of the BFMC.

The BFCC recognises that climate change has the potential to increase bush fire risk. The risk assessment process applied in this BFRMP is based on current climatic conditions. The BFCC will monitor information on climate change and will modify the process when necessary.

1.2 Aim and Objectives

The **aim** of this BFRMP is to minimise the risk of adverse impact of bush fires on life, property and the environment.

The **objectives** of this BFRMP are to:

- reduce the number of human-induced bush fire ignitions that cause damage to life, property, cultural heritage and the environment;
- manage fuel to reduce the rate of spread and intensity of bush fires, while minimising environmental/ecological impacts;
- reduce the community's vulnerability to bush fires by improving its preparedness; and
- effectively contain fires with a potential to cause damage to life, property and the environment.

1.3 Description of the Shoalhaven BFMC area

1.3.1 Location and land tenure

The Shoalhaven BFMC area is located on the New South Wales South Coast and includes the Local Government Area of Shoalhaven.

The area covered by the Shoalhaven BFMC is 4,531 km², spanning 160 kilometres of coast between Berry to Durras Lake and includes the land tenures outlined in Table 1.1.

Land Manager*	% of BFMC area
National Parks & Wildlife Service	49
Forests NSW	11.4
Department of Lands	6.4
Local Government	1
Defence	0.09
Private	27
Commonwealth	0.19
All other	4.92

Table 1.1 Land tenure

1.3.2 Climate and bush fire season

The typical / average climate in the Shoalhaven BFMC area is generally mild with average temperatures ranging from 15.5°C in June to 26.5°C in January. Rainfall is more pronounced in Summer/Autumn with average annual rainfalls of 1110mm in Nowra and 1270mm in Milton. The bush fire season generally runs between September and March each year.

Prevailing weather conditions associated with the bush fire season in the Shoalhaven BFMC area are north-westerly winds accompanied by high daytime temperatures and low relative humidity. Frequently dry lightning storms also occur during the bush fire season.

1.3.3 Population and demographic information

The population of the Shoalhaven BFMC area is approximately 100,000. The major population centres are Nowra/Bomaderry, Jervis Bay/St Georges Basin villages and Ulladulla/Milton. The following issues have been identified within the Shoalhaven BFMC area as potentially impacting on the ability of certain sections of the community to prepare for bush fire:

- High levels of tourism during the warmer months of the year can see the population increase to 320,000.
- Over 12,000 out of area owners of residential properties in Shoalhaven.

1.3.4 History of bush fire frequency and ignition cause

The Shoalhaven BFMC area has on average 600 bush fires per year, of which an average of twenty fires can be considered to be major fires requiring response by two or more fire authorities. The Shoalhaven can experience significant fire activity at any time of the year and fires in isolated parts of the LGA may burn for several days or weeks.

The main sources of ignition in the Shoalhaven BFMC area include:

- Arson
- Lightning
- Accidental ignitions

Chapter 2. Identifying and assessing the bush fire risk

2.1 Process

The Australia/New Zealand Standard *AS/NZS 4360: 2004 Risk Management* was used as the basis for the risk assessment process. See Figure 2.1 for the steps involved. For a detailed description of the process undertaken see the Bush Fire Risk Management Planning Guidelines for Bush Fire Management Committees on the RFS website: www.rfs.nsw.gov.au.

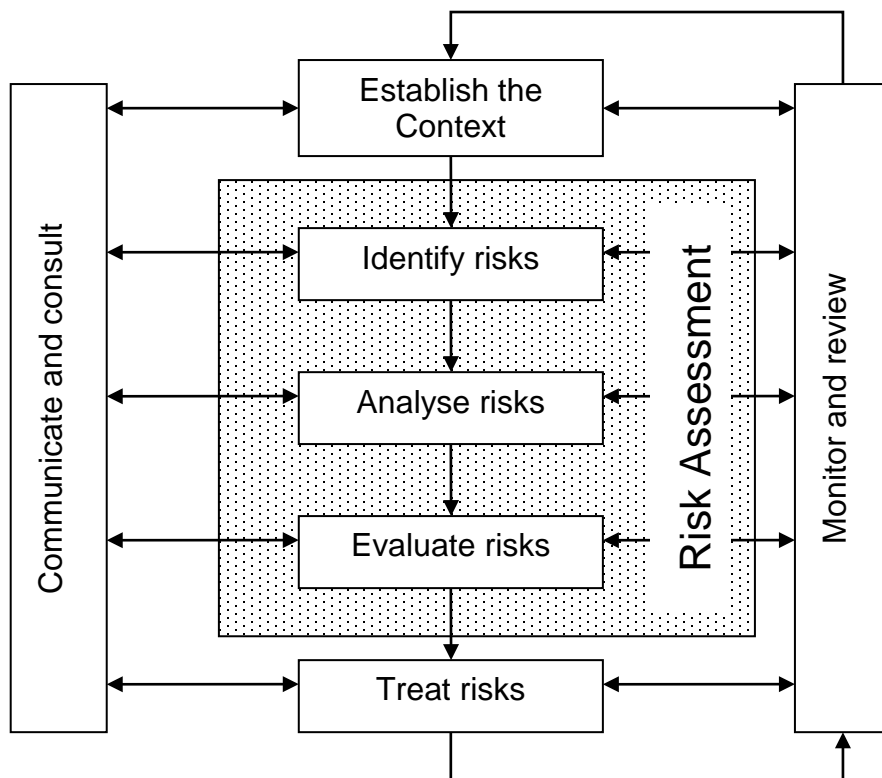


Figure 2.1 Overview of the risk assessment process

2.2 Communication and consultation

Community participation is an integral part of risk management. The Community Participation Strategy involved developing and implementing a process to address the needs, issues and concerns of stakeholders within the BFMC area in regards to the BFRMP. See Appendix 1 for the Community Participation Strategy used by the Shoalhaven BFMC in preparing this BFRMP.

2.3 Identifying the bush fire risk

Identifying the level of bush fire risk firstly involved identifying important community assets considered to be at risk from bush fire in the Shoalhaven BFMC area, and then assessing the likelihood and consequence ratings.

2.3.1 Assets

BFMC members and the community, including RFS volunteers, identified assets within the Shoalhaven BFMC that they believed were at risk of bush fire. All asset types were assessed in accordance with the guidelines in Annex B.

The assets were divided into four asset types:

Human settlement

- Residential areas including urban bushland interface areas and rural properties;
- Special Fire Protection areas including schools, hospitals, nursing homes, and tourist facilities; and
- Other human settlement areas including commercial and industrial areas where distinct from major towns.
 - Neighbourhood Safer Places have been included in the “Other human settlement” category in the Shoalhaven Bush Fire Risk Register. A Neighbourhood Safer Place (NSP) is defined by the *Rural Fires Act 1997* as *land or a building designated as a neighbourhood safer place under section 62C*. NSPs provide a place of last resort for people during a bush fire. All designated NSP locations for NSW are available at www.rfs.nsw.gov.au .

Economic

- Agricultural; e.g. major silos, regional saleyards, cropping/grazing land;
- Commercial/industrial e.g. major industries, waste treatment plants, sawmills;
- Infrastructure e.g. large power lines, gas and oil pipelines, railway lines, electricity substations, communication facilities;
- Tourist and recreational e.g. tourist sites and facilities, resorts, retreats;
- Mines;
- Commercial forests e.g. pine plantations, eucalypt plantations and commercial native forests; and
- Drinking water catchments.

Environmental

- Threatened species, populations and ecological communities and Ramsar wetlands;
- Locally important species and ecological communities, such as species and ecological communities especially sensitive to fire.

Cultural

- Aboriginal significance – Aboriginal places and items of significance;
- Non-indigenous heritage – places and items arising from the early occupation of NSW by European or other non-indigenous settlers; and
- Other cultural assets – community halls, clubs and recreational facilities.

See Appendix 2 for the full list of assets identified in the Shoalhaven BFMC area. See maps 1-6 for the location of assets to be treated under this BFRMP.

2.3.2 Assessing the bush fire risk - consequence

Once the assets were identified, the consequence of a bush fire impacting on these assets was assessed.

See Appendix 2 for the consequence ratings assigned to each asset identified in the Shoalhaven BFMC area.

The different asset types had different assessment processes used to determine the consequence. These processes are identified below.

Human settlement

A potential fire behaviour model using vegetation type, slope and separation distance was used to produce a threat rating for human settlement assets. The vulnerability of the asset to a bush fire was also assessed and a rating assigned. These ratings were then used to assess the consequence of a bush fire impacting upon a human settlement asset.

Special Fire Protection (SFP) assets were considered inherently more vulnerable to bush fire due to mobility capacity, knowledge or other issues relating to their inhabitants, (e.g. the elderly, infirm, children or tourists) and therefore stricter requirements for vulnerability assessment and rating were applied.

Economic

The level of economic impact e.g. local, regional or state, as well as the economic recovery costs (how long and complicated a financial recovery will be) of the asset were identified. These ratings were used to assess the consequence of a bush fire impacting upon an economic asset.

Environmental

Environmental assets with known minimum fire threshold were assessed to determine if they were at risk of a bush fire within the 5 year life of the BFRMP using fire history data. Those environmental assets which were within or above the fire threshold were not assessed in the BFRMP, as the negative impact of a fire within the 5 year period was determined as being low and may even be of benefit to the asset and surrounding habitat. Minimum threshold intervals between fire events are generally established by determining the minimum time-frames required for key plant species within an ecological community to reach reproductive maturity, whilst avoiding deleterious impacts to species diversity and habitat structures in the broader ecological community.

The vulnerability of an environmental asset was determined by its conservation status and its geographic extent (distribution across the

landscape). Vulnerability and potential impact of bush fire were used to assess the consequence of a bush fire impacting upon an environmental asset.

Cultural

For non-indigenous historical, Aboriginal and other cultural assets a potential fire behaviour model using fuel load, slope and proximity was used to produce a threat rating. The physical vulnerability of the asset to a bush fire was also assessed. These ratings were then used to assess the consequence of a bush fire impacting upon a cultural asset.

2.3.3 Assessing the bush fire risk - Likelihood

For all asset types the likelihood of a bush fire occurring was assessed. This involves considering fire history, including ignition cause and patterns, known fire paths, access, containment potential and potential fire run (size of the vegetated area). See Appendix 2 for the likelihood ratings assigned to each asset identified in the Shoalhaven BFMC area.

2.3.4 Identifying the level of risk

The consequence and likelihood ratings were then used to identify the level of risk. See Appendix 2 for the risk ratings assigned to each asset identified in the Shoalhaven BFMC area.

2.3.5 Evaluating the bush fire risk

Once the risk ratings for each asset were identified, they were evaluated to:

- a) confirm that risk levels identified in the risk analysis process are appropriate and reflect the relative seriousness of the bush fire risk;
- b) identify which assets require treatments; and
- c) identify treatment priorities.

2.3.6 Prioritising treatments

No organisation has limitless resources to deal with adverse risk. It is therefore necessary to define priorities. The bush fire risk ratings determined were used to prioritise the risk treatments, i.e. areas of extreme risk were considered first for treatment, then very high, then high.

2.3.7 Risk acceptability

Risks below a certain level were assessed as not requiring treatment within the life of this plan. This is due to a combination of risk priority and capacity to undertake the works. Within the Shoalhaven BFMC area the level of acceptability is high. Areas of high, medium or low risk are likely to be managed by routine procedures and so generally have not been allocated a

specific application of resources. It is the expectation of the Shoalhaven BFMC that community contribution regarding individual application of resources will include owner/occupiers of structural assets mapped in this plan within Asset Polygons to inspect and maintain their properties to comply with the document *RFS Standards for Asset Protection Zones* and construct/maintain their asset to increase the inherent property resilience against bushfire impact even where the current risk is assessed as low, medium or high.

All Neighbourhood Safer Places (NSP) for a BFMC area will require ongoing treatment by the applicable land owner to ensure that the asset remains viable as a place of last resort for people during a bush fire. Therefore, all NSP assets are allocated specific treatments in this Plan, regardless of the current level of bush fire risk identified and the risk acceptability nominated by the Shoalhaven BFMC.

For environmental & cultural assets the BFMC has accepted the level of risk. In most cases it is not practical to apply specific treatments due to the isolated location and sensitive nature of these assets. The protection and management of the asset will be taken into account during and planning for bush fire and prescribed burning operations. The BFMC wide treatments are likely to contribute toward the reduction of risk to these assets.

Chapter 3. Treating the risk

3.1 Bush Fire Management Zones

Bush Fire Management Zones were identified within the Shoalhaven BFMC area and mapped (see maps 1-6). These zones identify the fire management intent for a specific area. See Table (3.1) for descriptions of the zones and their purposes. The four categories of Bush Fire Management Zones are:

- Asset Protection Zone (APZ);
- Strategic Fire Advantage Zone (SFAZ);
- Land Management Zone (LMZ); and
- Fire Exclusion Zone (FEZ).

Some of these zones (usually Land Management Zones) may be further classified within this category by the land manager, e.g. LMZ -Heritage Management Zone (NPWS).

Zone	Purpose	Suppression Objective(s)	Zone characteristics
Asset Protection Zone	To protect human life, property and highly valued public assets and values.	To enable the safe use of Direct Attack suppression strategies within the zone. To minimise bush fire impacts on undefended assets.	As per RFS document <i>Standards for Asset Protection Zones</i> .
Strategic Fire Advantage Zone	To provide strategic areas of fire protection advantage which will reduce the speed and intensity of bush fires, and reduce the potential for spot fire development; To aid containment of wildfires to existing management boundaries.	To improve the likelihood and safe use of: Parallel Attack suppression strategies within the zone. and/or Indirect Attack (back burning) in high to very high fire weather conditions within the zone. To reduce the likelihood of: Crown fire development within the zone. and/or Spot fire ignition potential from the zone.	Zone width related to suppression objectives and dependent upon: <ul style="list-style-type: none"> ▪ Topography ▪ Aspect ▪ Spotting propensity ▪ Location of adjacent firebreaks ▪ Mosaic pattern of treatment Assess Overall Fuel Hazard (OFH) once vegetation communities reach minimum fire thresholds within this plan. Management practices should aim to achieve mosaic fuel reduction patterns so that the majority of the SFAZ has an OFH of less than high.
Land Management Zone	To meet relevant land management objectives in areas where APZs or SFAZs are not appropriate.	As per the land management and fire protection objectives of the responsible land manager. To reduce the likelihood of spread of fires. To undertake mosaic burning	As appropriate to achieve land management e.g. heritage and/or fire protection e.g. broad scale mosaic burning objectives.
Fire Exclusion Zone	To exclude bush fires.	N/A	Variable dependant on size of fire sensitive area requiring protection.

Table 3.1 Bush Fire Management Zones: Purpose, objectives and characteristics

Note 1: OFH refers to the Overall Fuel Hazard Guide as described in the document published by (Dept. of Sustainability and Environment 3rd ed. 1999 & NPWS version); State-wide procedures for assessment of fuel hazard will be developed in conjunction with the BFCC.

Note 2: All areas that are not mapped or described as APZs, SFAZs or FEZs are considered as LMZs.

For the purpose of the Bush Fire Environmental Assessment Code:

1. Plantations that are approved under the *Plantations & Reafforestation Act 1999* after closure of the public exhibition period for this BFRMP are considered to be identified in this BFRMP; and
2. Retained vegetation within the aforementioned plantations is considered to be a Strategic Fire Advantage Zone identified in the text of this BFRMP as long as it meets the suppression objectives for SFAZs included in the BFRMP, and is not mapped or otherwise described as a Fire Exclusion Zone in the BFRMP.

3.2 BFMC wide treatments

BFMC wide treatments are activities which reduce the overall bush fire risk within the BFMC area and are undertaken on an ongoing basis as part of normal business. These treatments are not linked to specific assets in the BFRMP, rather they are applied across all or part of the BFMC area as designated by legislation or agency policy. BFMC wide treatments include the following:

3.2.1 Reviewing the bush fire prone land map

These maps identify bush fire prone land and are used to trigger whether a development application is assessed using *Planning for Bush Fire Protection*¹.

3.2.2 Ensuring developments in bush fire prone land comply with Planning for Bush Fire Protection

This assessment process requires new applications for development to include bush fire protection measures.

3.2.3 Using the Local Environment Plan/s (LEPs) to control developments in areas with a bush fire risk

LEPs can be used to exclude development in extreme bush fire risk areas or where bush fire protection measures cannot be incorporated.

3.2.4 Varying the standard bush fire danger period as required

In years where the weather is particularly adverse the bush fire danger period may be brought in early or extended. This is assessed each year by the BFMC.

3.2.5 Requiring permits during the bush fire danger period

In the bush fire danger period a fire safety permit is required to light a fire in the open. Permits specify conditions such as fire fighting equipment that must be on site, or restrict burns based on weather conditions.

3.2.6 Prosecution of arsonists/offenders

¹ NSW Rural Fire Service 2006 *Planning for Bush Fire Protection: A guide for councils, planners, fire authorities and developers.*

Under the *Rural Fires Act 1997* persons may be prosecuted for breaching the conditions on a fire permit, lighting a fire during a Total Fire Ban, allowing fire to escape their property, or other breaches of the Act.

3.2.7 Investigation of bush fire cause

All bush fires which do not have a known cause are investigated to identify how they started.

3.2.8 Normal fire suppression activities

Responding to bush fire is a normal business activity for the fire fighting authorities.

3.2.9 Assessing and managing compliance with strategic fire fighting resource allocation provisions

Strategic fire fighting resource allocation provisions is the process used to identify the number of stations, brigades and appliances required in an area, and considers members, training, assets and hazards.

3.2.10 Community Education

Providing communities and individuals with information on preparing for and dealing with bush fires.

3.2.11 Surveillance

Carrying out surveillance on days of very high or higher fire danger as needed.

3.2.12 Preparation of a S52 Operations Coordination Plan

The Operations Coordination Plan is prepared biannually and sets out how coordinated fire fighting will occur. It includes specific operational restrictions on fire fighting techniques in certain areas, where fires will be managed from, and how agencies involved can communicate during operations.

3.2.13 Fire Management Plans or Plans of Management

Some land management agencies have developed fire management plans or plans of management with specific fire or fuel management strategies, for example a Forests NSW Regional Fuel Management Risk Plan, a NPWS Fire Management Strategy. These publicly exhibited plans form the basis for operational fire planning on public parks, reserves and forests.

3.2.14 Bush Fire Hazard Complaints

Persons concerned about possible bush fire hazards on a neighbouring property or any other land can be report to the RFS Commissioner or their local RFS Fire Control Centre. The complaint will be investigated and may result in a notice being issued to the landowner or manager to reduce the hazard.

3.2.15 All asset owner/occupiers to maintain APZ

It is expected that property owners/occupiers of all structural assets will design, landscape and maintain their properties to comply with document "RFS Standards for Asset Protection Zones" and maintain a Defendable Space for residents/occupants.

3.2.16 Maintain adjacent APZ.

Owner/occupiers of APZs located adjacent to Low, Moderate or High risk assets will monitor in accordance with RFS Standards for APZ and maintain overall fuel hazard to comply. These APZs are generally not located on land that is the responsibility of the asset protected.

3.2.17 Develop Facility Fire Action Plan (Low / Moderate / High Risk)

Owners/occupiers of Special Fire Protection Purpose developments at Low, Moderate or High risk are strongly encouraged to prepare a Facility Fire Action Plan or incorporate within Facility Emergency Management Plan. Owners/occupiers to review their plan annually.

3.2.18 Linear Strategic Breaks

The Shoalhaven BFMC recognises that in association with fire access ways (roads or trails) and utilities easements, additional fuel management works may be necessary from time to time to provide for Lineal Strategic Breaks (LSB) to aid containment of wildfires to existing management boundaries and to improve the safe use of indirect attack strategies. These LSB have not been mapped in the BFRMP and specific enhancement works will only be required for the purpose of the BFRMP where agreed by the Shoalhaven BFMC

3.2.19 Designated Fire Trails

Designated Fire Trails will be maintained in accordance with relevant standards.

3.3 Asset specific treatments

There are five broad strategy groups available to treat the bush fire risk to assets identified in the BFRMP.

The types of asset specific treatments in each strategy group that may be used in the Shoalhaven BFMC area are listed below. A full list of the treatment strategies in the Shoalhaven BFMC area are in Appendix 3.

Strategy	Targeted treatments used in the Shoalhaven BFMC area
Ignition Management	Manage ignitions on days of very high to extreme to reduce the chance of fire escape.
Hazard Reduction	Conduct prescribed burning and mechanical hazard reduction to reduce risk
Community Education	Provide a variety of community education opportunities to increase community resilience.
Property Planning	Conduct property planning to provide further, asset specific treatments.
Preparedness	Ensure community and property preparedness for fire events

Table 3.2 Asset specific treatments used in the Shoalhaven BFMC area

3.4 Fire Thresholds

The vegetation in the Shoalhaven BFMC area was classified into fire threshold categories (Table 3.3).

Vegetation formation	Minimum SFAZ Threshold	Minimum LMZ Threshold	Maximum Threshold	Notes
Rainforest	NA	NA	NA	Fire should be avoided.
Alpine complex	NA	NA	NA	Fire should be avoided.
Wet Sclerophyll forest (shrubby subformation)	25	30	60	Crown fires should be avoided in the lower end of the interval range.
Wet Sclerophyll forest (grassy subformation)	10	15	50	Crown fires should be avoided in the lower end of the interval range.
Grassy woodland	5	8	40	Minimum interval of 10 years should apply in the southern Tablelands area. Occasional intervals greater than 15 years may be desirable.
Grassland	2	3	10	Occasional intervals greater than 7 years should be included in coastal areas. There was insufficient data to give a maximum interval; available evidence indicates maximum intervals should be approximately 10 years.
Dry sclerophyll forest (shrub/grass subformation)	5	8	50	Occasional intervals greater than 25 years may be desirable.
Dry sclerophyll forest (shrub subformation)	7	10	30	Occasional intervals greater than 25 years may be desirable.
Heathlands	7	10	30	Occasional intervals greater than 20 years may be desirable.
Freshwater wetlands	6	10	35	Occasional intervals greater than 30 years may be desirable.
Forested wetlands	7	10	35	Some intervals greater than 20 years may be desirable.
Saline wetlands	NA	NA	NA	Fire should be avoided.
Semi-arid woodlands (grassy subformation)	6	9	No max	Not enough data for a maximum fire interval.
Semi-arid woodlands (shrubby subformation)	10	15	No Max	Not enough data for a maximum fire interval.
Arid shrublands (chenopod subformation)	NA	NA	NA	Fire should be avoided.
Arid shrublands (acacia subformation)	10	15	No Max	Not enough data for a maximum fire interval.

Table 3.3 Fire Thresholds for Vegetation Categories

3.5 Annual works programs

The land management agencies and fire fighting authorities responsible for implementing the treatments identified in this plan will include those treatments in their annual works programs detailing how, when, and where the required activities will be undertaken.

3.6 Implementation

When the treatments identified in this BFRMP are implemented there are a number of issues that need to be considered by the responsible agency including environmental assessments and approvals, smoke management and prescribed burn plans.

Chapter 4. Performance monitoring and reviewing

4.1 Review

This BFRMP must be reviewed and updated within each successive five-year period from the constitution of the BFMC. The Shoalhaven BFMC will also review this plan as necessary to account for any changes in context or risk. This may be triggered by a range of circumstances, including but not limited to:

- changes to the BFMC area, organisational responsibilities or legislation;
- changes to the bush fire risk in the area; or
- following a major fire event.

4.2 Monitoring

The BFMC is required to monitor progress towards the completion of treatment works listed in the BFRMP, and the timeliness of the works.

4.3 Reporting

The BFMC is required to report annually to the BFCC on its progress in implementing the bush fire risk management activities identified in this plan.

4.4 Performance Measurements

State wide performance measurements which are linked to the BFRMP objectives have been identified within Appendix G of BFCC Policy 03/2007. All BFMCs must use these to monitor and report on their success in reducing the bush fire risk in their BFMC area.

Appendix 1 – Community Participation Strategy

Date	Target Audience	Method of Communication	Method of Notification	Key message / Purpose	Agency Responsible
Various	Intra-agency	Various	Intra-agency (various)	Ensure all agency / member group issues and necessary agency inputs are incorporated into BFRMP.	All BFMC agencies / members
2016	Sussex Inlet and surrounds community	Public meeting	Community group notification – social media, radio, mail, community notice board	Discuss Sussex Inlet area disaster resilience and related BFRMP issues and preparation.	RFS
19/6/2016	Bendalong Brigade	Meeting	Brigade email / phone	Discuss Redhead Villages CPP and related BFRMP issues.	RFS
19/6/2016	Cunjurong Point / Manyana Brigade	Meeting	Brigade email / phone	Discuss Redhead Villages CPP and related BFRMP issues and preparation.	RFS
10/8/2016	Community members of Bendalong, Manyana, Cunjurong Point, Berringer Lake and surrounding areas.	Drop in meeting	Community notice board, electronic.	Discuss Redhead Villages CPP and related BFRMP issues and preparation.	RFS
30/8/2016	Bendalong, Manyana, Cunjurong Point and Berringer Lake.	Drop in meeting	Community notice board, electronic.	Discuss Redhead Villages CPP and related BFRMP issues and preparation.	RFS
15/10/2016	Shoalhaven RFS Brigades	Captains Pre-season Meeting	Agenda notification	Update on BFRMP preparation and reminder of input	RFS
4/2/2017	Berry and surrounds community	Berry Agricultural Show	Drop in attendance	Update on BFRMP preparation and reminder of input	RFS

Date	Target Audience	Method of Communication	Method of Notification	Key message / Purpose	Agency Responsible
11/2/2017	Nowra and surrounds community	Nowra Ag Show	Drop in attendance	Update on BFRMP preparation and reminder of input	RFS
4/3/2017	Milton and surrounds community	Milton Ag Show	Drop in attendance	Update on BFRMP preparation and reminder of input	RFS
7/8/2017	Ulladulla and surrounds community	Ulladulla Forum	Community group notification – social media, radio, community notice board	Update on BFRMP preparation and reminder of input	RFS
24/10/2017	Ulladulla and surrounds community	Ulladulla Ex-Services Club Forum	Community group notification – social media, radio, community notice board	Update on BFRMP preparation and reminder of input	RFS
16/10/2017	Members of Tomerong and surrounding communities	Public Meeting	Community group notification – social media, radio, mail, community notice board	BFRMP preparation	RFS
21/10/2017	Shoalhaven RFS Brigades	Captains Pre-season Meeting	Agenda notification	Update on BFRMP preparation and reminder of input	RFS
3/2/2018	Berry and surrounds community	Berry Ag Show	Drop in attendance	Update on BFRMP preparation and reminder of input	RFS
10/2/2018	Nowra and surrounds community	Nowra Ag Show	Drop in attendance	Update on BFRMP preparation and reminder of input	RFS
3/3/2018	Milton and surrounds community	Milton Ag Show	Drop in attendance	Update on BFRMP preparation and reminder of input	RFS

Appendix 2 – Asset Register

Map ref #	Asset name	Asset type	Asset sub type	Map Display Area	Likelihood	Consequence	Risk	Priority	Treatment number
1	Aboriginal Significance	Cultural	Aboriginal Significance	Nowra	Likely	Catastrophic	Extreme	1B	
2	Aboriginal Sites	Cultural	Aboriginal Significance	Ulladulla	Likely	Catastrophic	Extreme	1B	
5	Endangered Fauna	Environment	Endangered	Bay and Basin	Almost certain	Major	Extreme	1C	
3	Endangered Flora	Environment	Endangered	Nowra	Almost certain	Major	Extreme	1C	
4	Endangered Flora	Environment	Endangered	Nowra	Almost certain	Major	Extreme	1C	
26	Sussex Villages Interface	Human Settlement	Residential	Bay and Basin	Likely	Major	Very High	2A	36;37;38;39;40;41;42;46
27	Tomerong Village Interface	Human Settlement	Residential	Bay and Basin	Likely	Major	Very High	2A	12;13;14
25	Callala Villages Interface	Human Settlement	Residential	Nowra	Likely	Major	Very High	2A	6;7;8;9;10; 11
32	Woodburn Rural	Human Settlement	Residential	Ulladulla	Likely	Major	Very High	2A	50;51;52;53;54;55
37	Kangaroo Valley Rural	Human Settlement	Residential	North Shoalhaven	Likely	Major	Very High	2A	72;73;74
36	West Cambewarra Rural	Human Settlement	Residential	North Shoalhaven	Likely	Major	Very High	2A	69;70;71
35	West Nowra Rural	Human Settlement	Residential	Nowra	Likely	Major	Very High	2A	61;62;63;64;65;66;67;68
33	Milton Rural	Human Settlement	Residential	Ulladulla	Likely	Major	Very High	2A	52;53;54;56;57
31	Cockwhy Rural	Human Settlement	Residential	South Shoalhaven	Likely	Major	Very High	2A	33;34;35
29	Culburra Beach Urban Interface	Human Settlement	Residential	Nowra	Likely	Major	Very High	2A	47;48;49
30	Clyde River Rural	Human Settlement	Residential	South Shoalhaven	Likely	Major	Very High	2A	29;30;31;32;43;44;45
7	Myola Village Interface	Human Settlement	Residential	Bay and Basin	Likely	Major	Very High	2A	1;2;3;4;5
9	Falls Creek Rural	Human Settlement	Residential	Nowra	Likely	Major	Very High	2A	25;26;27;28;15;16;17;18;66;67
8	Tomerong Rural	Human Settlement	Residential	Bay and Basin	Likely	Major	Very High	2A	12;13;14;15;16;17;18;19;20;21;22;23;24
34	Conjola Rural	Human Settlement	Residential	Ulladulla	Likely	Major	Very High	2A	58;59;60
28	Culburra Retirement Village	Human Settlement	Special Fire Protection	Nowra	Likely	Major	Very High	2A	75

24	Bewong Communications Tower	Economic	Infrastructure	Bay and Basin	Likely	Major	Very High	2A	78
20	Red Rocks Comms Tower	Economic	Infrastructure	North Shoalhaven	Likely	Major	Very High	2A	76
21	Boyne Comms Tower	Economic	Infrastructure	South Shoalhaven	Likely	Major	Very High	2A	77
10	Endangered Flora	Environment	Endangered	Nowra	Likely	Major	Very High	2A	
15	Endangered Flora	Environment	Endangered	Nowra	Likely	Major	Very High	2A	
16	Endangered Flora	Environment	Endangered	South Shoalhaven	Likely	Major	Very High	2A	
11	Endangered Flora	Environment	Endangered	North Shoalhaven	Likely	Major	Very High	2A	
12	Endangered Flora	Environment	Endangered	North Shoalhaven	Likely	Major	Very High	2A	
13	Endangered Flora	Environment	Endangered	North Shoalhaven	Likely	Major	Very High	2A	
19	Endangered Fauna	Environment	Endangered	South Shoalhaven	Likely	Major	Very High	2A	
14	Endangered Fauna	Environment	Endangered	Nowra	Likely	Major	Very High	2A	
22	Endangered Fauna	Environment	Endangered	Bay and Basin	Likely	Major	Very High	2A	
18	Endangered Fauna	Environment	Endangered	South Shoalhaven	Likely	Major	Very High	2A	
6	Pioneer Farm	Cultural	Non Indigenous	North Shoalhaven	Likely	Major	Very High	2A	72;73
17	Aboriginal Significance	Cultural	Aboriginal Significance	West Shoalhaven	Likely	Major	Very High	2A	
23	Aboriginal Significance	Cultural	Aboriginal Significance	Ulladulla	Likely	Major	Very High	2A	
42	Bay & Basin Urban Interface	Human Settlement	Residential	Bay and Basin;Nowra	Possible	Catastrophic	Very High	2B	79;80;81;82;83;84;85;86;87;88;89;90;91;92;93;94;95;96;97;98;99;100
41	Sussex Inlet Public School	Human Settlement	Special Fire Protection	Bay and Basin	Possible	Catastrophic	Very High	2B	106;40;41;36
40	Vincentia Public School	Human Settlement	Special Fire Protection	Bay and Basin	Possible	Catastrophic	Very High	2B	104;105
39	Vincentia High School	Human Settlement	Special Fire Protection	Bay and Basin	Possible	Catastrophic	Very High	2B	102;103
38	Coastal Waters Retirement Village	Human Settlement	Special Fire Protection	Bay and Basin	Possible	Catastrophic	Very High	2B	101
43	Bangalee Scout Camp	Human Settlement	Special Fire Protection	North Shoalhaven	Possible	Catastrophic	Very High	2B	107;108;109;110
44	Kingiman Communications Tower	Economic	Infrastructure	Ulladulla	Almost certain	Moderate	Very High	2C	111
45	Wandandian Rural	Human Settlement	Residential	Bay and Basin	Likely	Moderate	High	3A	17;18;21;22;23
48	Culburra Industrial Estate	Economic	Commercial	Nowra	Likely	Moderate	High	3A	

47	Fishermans Paradise Communications Tower	Economic	Infrastructure	Ulludulla	Likely	Moderate	High	3A	
46	Sussex Inlet Surf Life Saving Club	Economic	Tourist and Recreational	Bay and Basin	Likely	Moderate	High	3A	
56	Redhead Villages Interface	Human Settlement	Residential	Ulladulla	Possible	Major	High	3B	121;122;123;124;125
54	Nowra Urban Interface	Human Settlement	Residential	Nowra	Possible	Major	High	3B	112;113;114
52	Sussex Inlet Rural	Human Settlement	Residential	Bay and Basin	Possible	Major	High	3B	
55	Hyams Beach Village Interface	Human Settlement	Residential	Bay and Basin	Possible	Major	High	3B	115;116;117;118;119;120
60	Sassafras Rural	Human Settlement	Residential	West Shoalhaven	Possible	Major	High	3B	20;19
59	Orient Point Villages Interface	Human Settlement	Residential	Nowra	Possible	Major	High	3B	
49	University of Wollongong, Shoalhaven Campus	Human Settlement	Special Fire Protection	Nowra	Possible	Major	High	3B	
53	Albatross Aviation Technology Park	Economic	Commercial	Nowra	Possible	Major	High	3B	
50	Bamarang Water Treatment Plant	Economic	Commercial	Nowra	Possible	Major	High	3B	
57	Eastern Gas Pipeline Yalwal Road Sub	Economic	Infrastructure	Nowra	Possible	Major	High	3B	
58	West Tomerong Substation	Economic	Infrastructure	Nowra	Possible	Major	High	3B	
51	Burrier Water Pump Station	Economic	Drinking Water Catchment	Nowra	Possible	Major	High	3B	
64	Currarong Village Interface	Human Settlement	Residential	Nowra	Unlikely	Catastrophic	High	3C	126;127;128;129
65	Ulladulla Urban Interface	Human Settlement	Residential	Ulladulla	Unlikely	Catastrophic	High	3C	130
63	Kangaroo Valley Village Interface	Human Settlement	Residential	North Shoalhaven	Unlikely	Catastrophic	High	3C	
61	Glengarry (Scotts College)	Human Settlement	Special Fire Protection	North Shoalhaven	Unlikely	Catastrophic	High	3C	
62	Falls Creek Public School	Human Settlement	Special Fire Protection	Nowra	Unlikely	Catastrophic	High	3C	
69	Huskisson Industrial Area	Economic	Commercial	Nowra	Almost certain	Minor	High	3D	
72	Manyana STP & Landfill	Economic	Commercial	Ulludulla	Almost certain	Minor	High	3D	
71	St Georges Basin Sewage Treatment Plant	Economic	Commercial	Bay and Basin	Almost certain	Minor	High	3D	
73	Ulladulla Industrial Area	Economic	Commercial	Ulludulla	Almost certain	Minor	High	3D	

70	Sussex Inlet Industrial Precinct	Economic	Commercial	Bay and Basin	Almost certain	Minor	High	3D	
67	South Nowra Industrial/Commercial	Economic	Commercial	Nowra	Almost certain	Minor	High	3D	
66	West Nowra Commercial/Industrial Area	Economic	Commercial	Nowra	Almost certain	Minor	High	3D	
68	Sawmill BTU Road	Economic	Commercial	Nowra	Almost certain	Minor	High	3D	
87	Sassafras Communications Tower	Economic	Infrastructure	West Shoalhaven	Almost certain	Minor	High	3D	
83	Alamein Caravan Park	Economic	Tourist and Recreational	Bay and Basin	Almost certain	Minor	High	3D	
80	Lake Tabourie Holiday Haven Park	Economic	Tourist and Recreational	South Shoalhaven	Almost certain	Minor	High	3D	
79	Wairo Beach Tourist Park	Economic	Tourist and Recreational	South Shoalhaven	Almost certain	Minor	High	3D	131
78	The Cabins (Pacifcana Dr)	Economic	Tourist and Recreational	Bay and Basin	Almost certain	Minor	High	3D	
76	The Bush Camp Caravan Park	Economic	Tourist and Recreational	South Shoalhaven	Almost certain	Minor	High	3D	
81	Snappy Gums Caravan Park	Economic	Tourist and Recreational	Bay and Basin	Almost certain	Minor	High	3D	
77	The Pines Motel & Tourist Park	Economic	Tourist and Recreational	South Shoalhaven	Almost certain	Minor	High	3D	
74	Coolendel Camp Ground	Economic	Tourist and Recreational	Nowra	Almost certain	Minor	High	3D	
75	Rustic Caravan Park	Economic	Tourist and Recreational	Ulludulla	Almost certain	Minor	High	3D	
82	Myola Tourist Park	Economic	Tourist and Recreational	Nowra	Almost certain	Minor	High	3D	
85	Bay & Basin Commercial Forests	Economic	Commercial Forest	Bay and Basin	Almost certain	Minor	High	3D	
86	Ulladulla Commercial Forests	Economic	Commercial Forest	Ulludulla	Almost certain	Minor	High	3D	
84	Nowra Commercial Forests	Economic	Commercial Forest	Nowra	Almost certain	Minor	High	3D	
123	Bawley Point / Kioloa Villages Interface	Human Settlement	Residential	South Shoalhaven	Unlikely	Major	Medium	4	140;141;142;143
91	North Durras Village Interface	Human Settlement	Residential	South Shoalhaven	Unlikely	Major	Medium	4	135;136
122	Lake Tabourie Village Interface	Human Settlement	Residential	South Shoalhaven	Unlikely	Major	Medium	4	137;138;139

118	Nowra East Rural	Human Settlement	Residential	Nowra	Unlikely	Major	Medium	4	
121	Conjola Villages Interface	Human Settlement	Residential	Ulladulla	Unlikely	Major	Medium	4	144;145;146
120	Wandandian Village Interface	Human Settlement	Residential	Bay and Basin	Unlikely	Major	Medium	4	
90	Depot Beach Village Interface	Human Settlement	Residential	South Shoalhaven	Unlikely	Major	Medium	4	135;136
119	Shoalhaven Heads Village Interface	Human Settlement	Residential	North Shoalhaven	Unlikely	Major	Medium	4	132;133;134
109	Pothole Road Cabins	Human Settlement	Residential	South Shoalhaven	Unlikely	Major	Medium	4	
126	Cambewarra Range Rural	Human Settlement	Residential	North Shoalhaven	Unlikely	Major	Medium	4	
114	Anglicare Chesalon	Human Settlement	Special Fire Protection	Nowra	Unlikely	Major	Medium	4	
112	Australian National University (Kioloa Campus)	Human Settlement	Special Fire Protection	South Shoalhaven	Unlikely	Major	Medium	4	
89	David Berry Hospital	Human Settlement	Special Fire Protection	North Shoalhaven	Unlikely	Major	Medium	4	
115	St Johns Highschool	Human Settlement	Special Fire Protection	Nowra	Unlikely	Major	Medium	4	
92	Watersleigh	Human Settlement	Special Fire Protection	North Shoalhaven	Unlikely	Major	Medium	4	
93	Bay & Basin Agriculture	Economic	Agricultural	Bay and Basin	Likely	Minor	Medium	4	
98	Lake Conjola STP	Economic	Commercial	Ulludulla	Likely	Minor	Medium	4	
96	Kangaroo Valley Power Station	Economic	Commercial	North Shoalhaven	Unlikely	Major	Medium	4	
94	HMAS Albatross	Economic	Commercial	Nowra	Unlikely	Major	Medium	4	
116	Vincentia Communications/Water Facility	Economic	Infrastructure	Bay and Basin	Possible	Moderate	Medium	4	
124	Eastern Gas Pipeline Albatross Road Sub	Economic	Infrastructure	Nowra	Unlikely	Major	Medium	4	
104	Pretty Beach Camp Ground	Economic	Tourist and Recreational	South Shoalhaven	Likely	Minor	Medium	4	
125	Culburra Beach Holiday Haven Tourist Park	Economic	Tourist and Recreational	Nowra	Possible	Moderate	Medium	4	
102	Racecourse Beach Tourist Park	Economic	Tourist and Recreational	South Shoalhaven	Likely	Minor	Medium	4	
100	Burrill Lake Holiday Haven Park	Economic	Tourist and Recreational	Ulludulla	Likely	Minor	Medium	4	
106	Depot Beach Camp Ground	Economic	Tourist and Recreational	South Shoalhaven	Likely	Minor	Medium	4	
105	Pebble Beach Camp Ground	Economic	Tourist and Recreational	South Shoalhaven	Likely	Minor	Medium	4	

101	Ulladulla Caravan Parks	Economic	Tourist and Recreational	Ulladulla	Likely	Minor	Medium	4	
107	North Durras Caravan Parks	Economic	Tourist and Recreational	South Shoalhaven	Likely	Minor	Medium	4	
108	Cudmirrah Berrara Caravan Parks	Economic	Tourist and Recreational	Bay and Basin	Possible	Moderate	Medium	4	
103	Merry Beach Tourist Park	Economic	Tourist and Recreational	South Shoalhaven	Likely	Minor	Medium	4	
110	Ulladulla Pistol Club	Economic	Tourist and Recreational	Ulladulla	Likely	Minor	Medium	4	
113	Coastal Patrol	Economic	Tourist and Recreational	South Shoalhaven	Likely	Minor	Medium	4	
111	Nowra Rifle Range	Economic	Tourist and Recreational	Nowra	Likely	Minor	Medium	4	
127	Willinga Park	Economic	Tourist and Recreational	South Shoalhaven	Unlikely	Major	Medium	4	
117	Bay & Basin Leisure Centre	Economic	Tourist and Recreational	Bay and Basin	Possible	Moderate	Medium	4	
95	Bendeela Pondage and associated infrastructure	Economic	Drinking Water Catchment	North Shoalhaven	Unlikely	Major	Medium	4	
97	Tallowa Dam	Economic	Drinking Water Catchment	North Shoalhaven	Unlikely	Major	Medium	4	
99	Endangered Fauna	Environment	Endangered	North Shoalhaven	Unlikely	Major	Medium	4	
88	Riversdale	Cultural	Non Indigenous	North Shoalhaven	Likely	Minor	Medium	4	
177	North Shoalhaven River Rural	Human Settlement	Residential	North Shoalhaven	Unlikely	Moderate	Low	NA	
153	NSP Berrara Cove Reserve	Human Settlement	Other	Bay and Basin	Unlikely	Moderate	Low	NA	152
148	NSP Tomerong Public School	Human Settlement	Other	Bay and Basin	Unlikely	Moderate	Low	NA	148
149	NSP Lake Conjola Community Centre	Human Settlement	Other	Ulladulla	Unlikely	Moderate	Low	NA	149
167	NSP Greys Beach Reserve (Boat Ramp Carpark)	Human Settlement	Other	North Shoalhaven	Unlikely	Moderate	Low	NA	166
178	NSP St Georges Basin Country Club	Human Settlement	Other	Bay and Basin	Unlikely	Moderate	Low	NA	174
174	NSP Parkes Cres Park	Human Settlement	Other	Nowra	Unlikely	Moderate	Low	NA	173
173	NSP Lakeside Cabins and Holiday Village Oval	Human Settlement	Other	Bay and Basin	Unlikely	Moderate	Low	NA	172
172	NSP Manyana Community Hall	Human Settlement	Other	Ulladulla	Unlikely	Moderate	Low	NA	171
171	NSP Ulladulla Foreshore Reserve	Human Settlement	Other	Ulladulla	Unlikely	Moderate	Low	NA	170

170	NSP Milton Showground	Human Settlement	Other	Ulladulla	Unlikely	Moderate	Low	NA	169
169	NSP Nowra Showground	Human Settlement	Other	Nowra	Unlikely	Moderate	Low	NA	168
151	NSP Sussex Inlet RSL Club	Human Settlement	Other	Bay and Basin	Unlikely	Moderate	Low	NA	151
168	NSP Dolphin Point Reserve	Human Settlement	Other	Ulladulla	Unlikely	Moderate	Low	NA	167
150	NSP Sussex Inlet Bowling Club	Human Settlement	Other	Bay and Basin	Unlikely	Moderate	Low	NA	150
166	NSP Ray Abood Village Green	Human Settlement	Other	North Shoalhaven	Unlikely	Moderate	Low	NA	165
165	NSP Kangaroo Valley Showground	Human Settlement	Other	North Shoalhaven	Unlikely	Moderate	Low	NA	164
164	NSP Berry Showground	Human Settlement	Other	North Shoalhaven	Unlikely	Moderate	Low	NA	163
156	NSP Basin View Boat Ramp	Human Settlement	Other	Bay and Basin	Unlikely	Moderate	Low	NA	155
162	NSP Greenwell Point Wharf Car Park	Human Settlement	Other	Nowra	Unlikely	Moderate	Low	NA	161
161	NSP Mollymook Beachfront Reserve	Human Settlement	Other	Ulladulla	Unlikely	Moderate	Low	NA	160
160	NSP Bawley Point Reserve	Human Settlement	Other	South Shoalhaven	Unlikely	Moderate	Low	NA	159
159	NSP Queanbeyan Ave Reserve - Burrill Lake	Human Settlement	Other	Ulladulla	Unlikely	Moderate	Low	NA	158
158	NSP Australian National University Research Site	Human Settlement	Other	South Shoalhaven	Unlikely	Moderate	Low	NA	157
157	NSP Tom Smith Oval HMAS Albatross	Human Settlement	Other	Nowra	Unlikely	Moderate	Low	NA	156
152	NSP Huskisson Public School	Human Settlement	Other	Bay and Basin	Unlikely	Moderate	Low	NA	147
163	NSP Artie Smith Oval	Human Settlement	Other	North Shoalhaven	Unlikely	Moderate	Low	NA	162
155	NSP Frances Ryan Reserve	Human Settlement	Other	Bay and Basin	Unlikely	Moderate	Low	NA	154
154	NSP Erowal Bay Public Hall Grounds	Human Settlement	Other	Bay and Basin	Unlikely	Moderate	Low	NA	153
130	Nowra Agriculture	Economic	Agricultural	Nowra	Unlikely	Minor	Low	NA	
132	South Shoalhaven	Economic	Agricultural	South Shoalhaven	Unlikely	Minor	Low	NA	
133	West Shoalhaven Agriculture	Economic	Agricultural	West Shoalhaven	Unlikely	Minor	Low	NA	
129	North Shoalhaven Agriculture	Economic	Agricultural	North Shoalhaven	Unlikely	Minor	Low	NA	
131	Ulladulla Agriculture	Economic	Agricultural	Ulludulla	Unlikely	Minor	Low	NA	
135	Ulludulla STP	Economic	Commercial	Ulludulla	Possible	Minor	Low	NA	
176	Culburra Commercial Centre	Economic	Commercial	Nowra	Unlikely	Moderate	Low	NA	
134	West Nowra Water Treatment Facilities	Economic	Commercial	Nowra	Possible	Minor	Low	NA	
141	Shoalhaven Heads STP	Economic	Commercial	North Shoalhaven	Unlikely	Moderate	Low	NA	

143	Mt Cambewarra Communications Facility	Economic	Infrastructure	North Shoalhaven	Unlikely	Moderate	Low	NA	
144	Railway Line	Economic	Infrastructure	North Shoalhaven	Unlikely	Moderate	Low	NA	
145	Moyean Hill Communications Tower	Economic	Infrastructure	North Shoalhaven	Unlikely	Minor	Low	NA	
138	Conjola Lakeside Van Park	Economic	Tourist and Recreational	Ulludulla	Unlikely	Minor	Low	NA	
137	Kioloa Beach Tourist Park	Economic	Tourist and Recreational	South Shoalhaven	Unlikely	Minor	Low	NA	
175	Shoalhaven Heads Holiday Haven Park	Economic	Tourist and Recreational	North Shoalhaven	Unlikely	Minor	Low	NA	
136	Lake Conjola Holiday Haven Park	Economic	Tourist and Recreational	Ulludulla	Unlikely	Minor	Low	NA	
146	Kings Point Ski Club	Economic	Tourist and Recreational	Ulladulla	Unlikely	Minor	Low	NA	
140	Kangaroo Valley Tourist Park	Economic	Tourist and Recreational	North Shoalhaven	Unlikely	Minor	Low	NA	
147	Yalwal Camp Grounds	Economic	Tourist and Recreational	West Shoalhaven	Possible	Minor	Low	NA	
142	Nowra Motor Cycle Club	Economic	Tourist and Recreational	Nowra	Possible	Minor	Low	NA	
139	Kangaroo Valley Country Club	Economic	Tourist and Recreational	North Shoalhaven	Unlikely	Moderate	Low	NA	
128	Bundanon	Cultural	Non Indigenous	North Shoalhaven	Unlikely	Moderate	Low	NA	

Appendix 3 – Treatment Register

Treatment Ref No	Strategy	Priority	Action	Comment	Responsible Agency	Support Agency	Other Support Agency	Scheduled Action Date	Asset Ref Nos
1	Hazard Reduction	2A	Myola APZ (LG)	Inspect and maintain APZ on LG tenure as required.	LGA			1718; 1819; 1920; 2021; 2122	7
2	Hazard Reduction	2A	Myola APZ (Private)	Inspect APZ on Private tenure and advise owner if maintenance required.	RFS	Private		1718; 1819; 1920; 2021; 2122	7
3	Hazard Reduction	2A	Myola APZ (Crown)	Inspect and maintain APZ on Crown tenure as required.	TI CL			1718; 1819; 1920; 2021; 2122	7
4	Hazard Reduction	2A	Callala SFAZ (NSWRFS)	Monitor Callala SFAZ on Private, Crown & LG tenure and conduct mosaic HR burning as required across the SFAZ.	RFS	TI CL; LGA; Private		1718; 1819; 1920; 2021; 2122	7
5	Community Education	2A	Myola Bushfire Workshop	Conduct bushfire preparedness workshop at least every 5 years.	RFS	TI CL; LGA		1718; 1819; 1920; 2021; 2122	7
6	Hazard Reduction	2A	Callala Villages APZ (Private)	Inspect APZ on Private tenure and advise owner if maintenance required.	RFS	Private		1718; 1819; 1920; 2021; 2122	25
7	Hazard Reduction	2A	Callala Villages APZ (OEH)	Inspect and maintain APZ on OEH tenure as required.	OEH			1718; 1819; 1920; 2021; 2122	25
8	Hazard Reduction	2A	Callala Villages APZ (LG)	Inspect APZ on LG tenure and maintain as required.	LGA			1718; 1819; 1920; 2021; 2122	25
9	Hazard Reduction	2A	Callala SFAZ (OEH)	Monitor Callala SFAZ on OEH tenure and conduct mosaic HR burning as required across the SFAZ.	OEH	RFS		1718; 1819; 1920; 2021; 2122	25
10	Hazard Reduction	2A	Callala SFAZ (NSWRFS)	Monitor Callala SFAZ on Private, Crown & LG tenure and conduct mosaic HR burning as required across the SFAZ.	RFS	TI CL; LGA; Private		1718; 1819; 1920; 2021; 2122	25
11	Community Education	2A	Callala Bushfire Workshop	Conduct bushfire preparedness workshop at least every 5 years.	RFS	TI CL; LGA; OEH		1718; 1819; 1920; 2021; 2122	25

12	Hazard Reduction	2A	Tomerong SFAZ (NSWRFS)	Monitor Tomerong SFAZ on Private and Crown and conduct mosaic HR burning as required across the SFAZ.	RFS	TI CL; Private		1718; 1819; 1920; 2021; 2122	8;27
13	Hazard Reduction	2A	Tomerong SFAZ (OEH)	Monitor Tomerong SFAZ on OEH tenure and conduct mosaic HR burning as required across the SFAZ.	OEH	RFS		1718; 1819; 1920; 2021; 2122	8;27
14	Hazard Reduction	2A	Tomerong SFAZ (FCNSW)	Monitor Tomerong SFAZ on FCNSW tenure and conduct mosaic HR burning as required across the SFAZ.	FCNSW	RFS		1718; 1819; 1920; 2021; 2122	8;27
15	Hazard Reduction	2A	Turpentine Range SFAZ (NSWRFS)	Monitor Turpentine Range SFAZ on Crown tenure and conduct mosaic HR burning as required across the SFAZ.	RFS	TI CL		1718; 1819; 1920; 2021; 2122	8;9
16	Hazard Reduction	2A	Turpentine Range SFAZ (OEH)	Monitor Turpentine Range SFAZ on OEH tenure and conduct mosaic HR burning as required across the SFAZ.	OEH	RFS		1718; 1819; 1920; 2021; 2122	8;9
17	Hazard Reduction	2A	Yarramunmun SFAZ (NSWRFS)	Monitor Yarramunmun SFAZ on Crown tenure and conduct mosaic HR burning as required across the SFAZ.	RFS	TI CL; Private		1718; 1819; 1920; 2021; 2122	8;9;45
18	Hazard Reduction	2A	Yarramunmun SFAZ (OEH)	Monitor Yarramunmun SFAZ on OEH tenure and conduct mosaic HR burning as required across the SFAZ.	OEH	RFS		1718; 1819; 1920; 2021; 2122	8;9;45
19	Hazard Reduction	2A	Sassafras SFAZ (OEH)	Monitor Sassafras SFAZ on OEH tenure and conduct mosaic HR burning as required across the SFAZ.	OEH	RFS		1718; 1819; 1920; 2021; 2122	8;60
20	Hazard Reduction	2A	Sassafras SFAZ (NSWRFS)	Monitor Sassafras SFAZ on Private tenure and conduct mosaic HR burning as required across the SFAZ.	RFS	Private		1718; 1819; 1920; 2021; 2122	8;60
21	Hazard Reduction	2A	Wandandian SFAZ (FCNSW)	Monitor Wandandian SFAZ on FCNSW tenure and conduct mosaic HR burning as required across the SFAZ.	FCNSW	RFS		1718; 1819; 1920; 2021; 2122	8;45

22	Hazard Reduction	2A	Wandandian SFAZ (NSWRFS)	Monitor Wandandian SFAZ on Private and Crown tenure and conduct mosaic HR burning as required across the SFAZ.	RFS	TI CL; Private		1718; 1819; 1920; 2021; 2122	8;45
23	Hazard Reduction	2A	Wandandian SFAZ (OEH)	Monitor Wandandian SFAZ on OEH tenure and conduct mosaic HR burning as required across the SFAZ.	OEH	RFS		1718; 1819; 1920; 2021; 2122	8;45
24	Community Education	2A	Tomerong Bushfire Workshop	Conduct bushfire preparedness workshop at least every 5 years.	RFS	TI CL; LGA; FCNSW		1718; 1819; 1920; 2021; 2122	8
25	Hazard Reduction	2A	Falls Creek APZ (Crown)	Inspect and maintain APZ on Crown tenure as required.	TI CL			1718; 1819; 1920; 2021; 2122	9
26	Hazard Reduction	2A	Falls Creek SFAZ (FCNSW)	Monitor Falls Creek SFAZ on FCNSW tenure and conduct mosaic HR burning as required across the SFAZ.	FCNSW	RFS		1718; 1819; 1920; 2021; 2122	9
27	Hazard Reduction	2A	Falls Creek SFAZ (OEH)	Monitor Falls Creek SFAZ on OEH tenure and conduct mosaic HR burning as required across the SFAZ.	OEH	RFS		1718; 1819; 1920; 2021; 2122	9
28	Hazard Reduction	2A	Falls Creek SFAZ (NSWRFS)	Monitor Falls Creek SFAZ on Private and Crown tenure and conduct mosaic HR burning as required across the SFAZ.	RFS	TI CL; Private		1718; 1819; 1920; 2021; 2122	9
29	Hazard Reduction	2A	Clyde Valley SFAZ (FCNSW)	Monitor Clyde Valley SFAZ on FCNSW tenure and conduct mosaic HR burning as required across the SFAZ.	FCNSW	RFS		1718; 1819; 1920; 2021; 2122	30
30	Hazard Reduction	2A	Clyde Valley SFAZ (NSWRFS)	Monitor Clyde Valley SFAZ on Private tenure and conduct mosaic HR burning as required across the SFAZ.	RFS	Private		1718; 1819; 1920; 2021; 2122	30
31	Hazard Reduction	2A	Budawang SFAZ (OEH)	Monitor Budawang SFAZ on OEH tenure and conduct mosaic HR burning as required across the SFAZ.	OEH	RFS		1718; 1819; 1920; 2021; 2122	30
32	Hazard Reduction	2A	Budawang SFAZ (FCNSW)	Monitor Budawang SFAZ on FCNSW tenure and conduct mosaic HR burning as required across the SFAZ.	FCNSW	RFS		1718; 1819; 1920; 2021; 2122	30

33	Hazard Reduction	2A	Cockwhy SFAZ (NSWRFS)	Monitor Cockwhy SFAZ on Private tenure and conduct mosaic HR burning as required across the SFAZ.	RFS	Private		1718; 1819; 1920; 2021; 2122	31
34	Hazard Reduction	2A	Cockwhy SFAZ (FCNSW)	Monitor Cockwhy SFAZ on FCNSW tenure and conduct mosaic HR burning as required across the SFAZ.	FCNSW	RFS		1718; 1819; 1920; 2021; 2122	31
35	Hazard Reduction	2A	Cockwhy SFAZ (OEH)	Monitor Cockwhy SFAZ on OEH tenure and conduct mosaic HR burning as required across the SFAZ.	OEH	RFS		1718; 1819; 1920; 2021; 2122	31
36	Hazard Reduction	2A	Sussex APZ (Crown)	Inspect and maintain APZ on Crown tenure as required.	TI CL			1718; 1819; 1920; 2021; 2122	26;41
37	Hazard Reduction	2A	Sussex APZ (OEH)	Inspect and maintain APZ on OEH tenure as required.	OEH			1718; 1819; 1920; 2021; 2122	26
38	Hazard Reduction	2A	Sussex APZ (Private)	Inspect APZ on Private tenure and advise owner if maintenance required.	RFS	Private		1718; 1819; 1920; 2021; 2122	26
39	Hazard Reduction	2A	Sussex APZ (LGA)	Inspect and maintain APZ on LG tenure as required.	LGA			1718; 1819; 1920; 2021; 2122	26
40	Hazard Reduction	2A	Sussex SFAZ (OEH)	Monitor Sussex SFAZ on OEH tenure and conduct mosaic HR burning as required across the SFAZ.	OEH	RFS		1718; 1819; 1920; 2021; 2122	26;41
41	Hazard Reduction	2A	Sussex SFAZ (NSWRFS)	Monitor Sussex SFAZ on Crown, LG and Private tenure and conduct mosaic HR burning as required across the SFAZ.	RFS	TI CL; LGA; Private		1718; 1819; 1920; 2021; 2122	26;41
42	Preparedness	2A	Sussex CPP	Prepare Community Protection Plan for Sussex urban area (17/18)	RFS	TI CL; LGA; OEH		1718	26
43	Preparedness	2A	Brooman CPP	Prepare Community Protection Plan for Brooman rural area. (19/20)	RFS	LGA; OEH; FCNSW		1920	30
44	Preparedness	2A	Shallow Crossing CPP	Prepare Community Protection Plan for Shallow Crossing rural area. (19/20)	RFS	LGA; FCNSW		1920	30
45	Preparedness	2A	Yadboro CPP	Prepare Community Protection Plan for Yadboro rural area. (20/21)	RFS	LGA; OEH; FCNSW		2021	30

46	Community Education	2A	Sussex Bushfire Workshop	Conduct bushfire preparedness workshop at least every 5 years.	RFS	TI CL; LGA; OEH; FCNSW		1718; 1819; 1920; 2021; 2122	26
47	Hazard Reduction	2A	Culburra APZ (Private)	Inspect APZ on Private tenure and advise owner if maintenance required.	RFS	Private		1718; 1819; 1920; 2021; 2122	29
48	Hazard Reduction	2A	Culburra APZ (LG)	Inspect and maintain APZ on LG tenure as required.	LGA			1718; 1819; 1920; 2021; 2122	29
49	Hazard Reduction	2A	Culburra SFAZ (NSWRFS)	Monitor Culburra SFAZ on Private tenure and conduct mosaic HR burning as required across the SFAZ.	RFS	Private		1718; 1819; 1920; 2021; 2122	29
50	Hazard Reduction	2A	Woodburn SFAZ (NSWRFS)	Monitor Woodburn SFAZ on Private tenure and conduct mosaic HR burning as required across the SFAZ.	RFS	Private		1718; 1819; 1920; 2021; 2122	32
51	Hazard Reduction	2A	Woodburn SFAZ (FCNSW)	Monitor Woodburn SFAZ on FCNSW tenure and conduct mosaic HR burning as required across the SFAZ.	FCNSW	RFS		1718; 1819; 1920; 2021; 2122	32
52	Hazard Reduction	2A	Croobyar SFAZ (OEH)	Monitor Croobyar SFAZ on OEH tenure and conduct mosaic HR burning as required across the SFAZ.	OEH	RFS		1718; 1819; 1920; 2021; 2122	32;33
53	Hazard Reduction	2A	Croobyar SFAZ (FCNSW)	Monitor Croobyar SFAZ on FCNSW tenure and conduct mosaic HR burning as required across the SFAZ.	FCNSW	RFS		1718; 1819; 1920; 2021; 2122	32;33
54	Hazard Reduction	2A	Croobyar SFAZ (NSWRFS)	Monitor Croobyar SFAZ on Private tenure and conduct mosaic HR burning as required across the SFAZ.	RFS	Private		1718; 1819; 1920; 2021; 2122	32;33
55	Preparedness	2A	Morton CPP	Prepare Community Protection Plan for Morton locality properties. (21/22)	RFS	LGA; OEH; FCNSW		2122	32
56	Hazard Reduction	2A	Ulladulla SFAZ (NSWRFS)	Monitor Ulladulla SFAZ on Crown, LG and Private tenure in RFD and conduct mosaic HR burning as required across the SFAZ.	RFS	TI CL; LGA; Private		1718; 1819; 1920; 2021; 2122	33

57	Hazard Reduction	2A	Ulladulla SFAZ (FRNSW)	Monitor Ulladulla SFAZ on Crown, LG and Private tenure in FD and conduct mosaic HR burning as required across the SFAZ.	FRNSW	TI CL; LGA; Private	1718; 1819; 1920; 2021; 2122	33
58	Hazard Reduction	2A	Conjola Rural SFAZ (NSWRFS)	Monitor Conjola Rural SFAZ on Private tenure and conduct mosaic HR burning as required across the SFAZ.	RFS	Private	1718; 1819; 1920; 2021; 2122	34
59	Hazard Reduction	2A	Conjola Rural SFAZ (OEH)	Monitor Conjola Rural SFAZ on OEH tenure and conduct mosaic HR burning as required across the SFAZ.	OEH	RFS	1718; 1819; 1920; 2021; 2122	34
60	Hazard Reduction	2A	Conjola Rural SFAZ (FCNSW)	Monitor Conjola Rural SFAZ on FCNSW tenure and conduct mosaic HR burning as required across the SFAZ.	FCNSW	RFS	1718; 1819; 1920; 2021; 2122	34
61	Hazard Reduction	2A	Mundamia SFAZ (OEH)	Monitor Mundamia SFAZ on OEH tenure and conduct mosaic HR burning as required across the SFAZ.	OEH	RFS	1718; 1819; 1920; 2021; 2122	35
62	Hazard Reduction	2A	Mundamia SFAZ (NSWRFS)	Monitor Mundamia SFAZ on Crown, Private and LG tenure and conduct mosaic HR burning as required across the SFAZ.	RFS	TI CL; LGA; Private	1718; 1819; 1920; 2021; 2122	35
63	Hazard Reduction	2A	Mundamia SFAZ (FRNSW)	Monitor Mundamia SFAZ on Crown and LG tenure and conduct mosaic HR burning as required across the SFAZ.	FRNSW	TI CL; LGA	1718; 1819; 1920; 2021; 2122	35
64	Hazard Reduction	2A	Burrier SFAZ (NSWRFS)	Monitor Burrier SFAZ on Crown and Private tenure and conduct mosaic HR burning as required across the SFAZ.	RFS	TI CL; Private	1718; 1819; 1920; 2021; 2122	35
65	Hazard Reduction	2A	Burrier SFAZ (OEH)	Monitor Burrier SFAZ on OEH tenure and conduct mosaic HR burning as required across the SFAZ.	OEH	RFS	1718; 1819; 1920; 2021; 2122	35

66	Hazard Reduction	2A	Yerriyong SFAZ (NSWRFS)	Monitor Yerriyong SFAZ on Crown and Private tenure and conduct mosaic HR burning as required across the SFAZ.	RFS	TI CL; Private		1718; 1819; 1920; 2021; 2122	35;9
67	Hazard Reduction	2A	Yerriyong SFAZ (OEH)	Monitor Yerriyong SFAZ on OEH tenure and conduct mosaic HR burning as required across the SFAZ.	OEH	RFS		1718; 1819; 1920; 2021; 2122	35;9
68	Preparedness	2A	Burrier CPP	Prepare Community Protection Plan for Burrier rural area. (18/19)	RFS	TI CL; LGA; OEH		1819	35
69	Hazard Reduction	2A	Budgong SFAZ (NSWRFS)	Monitor Budgong SFAZ on Crown and Private tenure and conduct mosaic HR burning as required across the SFAZ.	RFS	TI CL; Private		1718; 1819; 1920; 2021; 2122	36
70	Hazard Reduction	2A	Budgong SFAZ (OEH)	Monitor Budgong SFAZ on OEH tenure and conduct mosaic HR burning as required across the SFAZ.	OEH	RFS		1718; 1819; 1920; 2021; 2122	36
71	Preparedness	2A	Budgong CPP	Prepare Community Protection Plan for Budgong rural area. (20/21)	RFS	TI CL; LGA; OEH		2021	36
72	Hazard Reduction	2A	Kangaroo Valley SFAZ (NSWRFS)	Monitor Kangaroo Valley SFAZ on Crown, Private and LG tenure and conduct mosaic HR burning as required across the SFAZ.	RFS	TI CL; LGA; Private		1718; 1819; 1920; 2021; 2122	37;6
73	Hazard Reduction	2A	Kangaroo Valley SFAZ (OEH)	Monitor Kangaroo Valley SFAZ on OEH tenure and conduct mosaic HR burning as required across the SFAZ.	OEH	RFS		1718; 1819; 1920; 2021; 2122	37;6
74	Community Education	2A	Kang. Valley Fire Workshop	Conduct bushfire preparedness workshop at least every 5 years.	RFS	TI CL; LGA; OEH		1718; 1819; 1920; 2021; 2122	37
75	Hazard Reduction	2A	Culburra SFAZ	Monitor Culburra SFAZ on Private tenure and conduct mosaic HR burning as required across the SFAZ.	RFS	Private		1718; 1819; 1920; 2021; 2122	28
76	Hazard Reduction	2A	Red Rocks APZ (LG)	Inspect and maintain APZ on LG tenure as required.	LGA			1718; 1819; 1920; 2021; 2122	20

77	Hazard Reduction	2A	Boyne APZ (Crown)	Inspect and maintain APZ on Crown tenure as required.	TI CL			1718; 1819; 1920; 2021; 2122	21
78	Hazard Reduction	2A	Bewong Comms APZ (LG)	Inspect and maintain APZ on LG tenure as required.	LGA			1718; 1819; 1920; 2021; 2122	24
79	Hazard Reduction	2B	Basin View APZ (OEH)	Inspect and maintain APZ on OEH tenure as required.	OEH			1718; 1819; 1920; 2021; 2122	42
80	Hazard Reduction	2B	Basin View APZ (Crown)	Inspect and maintain APZ on Crown tenure as required.	TI CL			1718; 1819; 1920; 2021; 2122	42
81	Hazard Reduction	2B	Basin View APZ (LG)	Inspect and maintain APZ on LG tenure as required.	LGA			1718; 1819; 1920; 2021; 2122	42
82	Hazard Reduction	2B	Basin View SFAZ (NSWRFS)	Monitor Basin View SFAZ on Crown and Private tenure and conduct mosaic HR burning as required across the SFAZ.	RFS	TI CL; Private		1718; 1819; 1920; 2021; 2122	42
83	Hazard Reduction	2B	Basin View SFAZ (OEH)	Monitor Basin View SFAZ on OEH tenure and conduct mosaic HR burning as required across the SFAZ.	OEH	RFS		1718; 1819; 1920; 2021; 2122	42
84	Hazard Reduction	2B	St Georges Basin APZ (LG)	Inspect and maintain APZ on LG tenure as required.	LGA			1718; 1819; 1920; 2021; 2122	42
85	Hazard Reduction	2B	St Georges Basin APZ (Private)	Inspect APZ on Private tenure and advise owner if maintenance required.	RFS	Private		1718; 1819; 1920; 2021; 2122	42
86	Hazard Reduction	2B	St Georges Basin SFAZ	Monitor St Georges Basin SFAZ on Private and LG tenure and conduct mosaic HR burning as required across the SFAZ.	RFS	LGA; Private		1718; 1819; 1920; 2021; 2122	42
87	Hazard Reduction	2B	Erowal APZ (OEH)	Inspect and maintain APZ on OEH tenure as required.	OEH			1718; 1819; 1920; 2021; 2122	42
88	Hazard Reduction	2B	Erowal APZ (LG)	Inspect and maintain APZ on LG tenure as required.	LGA			1718; 1819; 1920; 2021; 2122	42
89	Hazard Reduction	2B	Erowal SFAZ (NSWRFS)	Monitor Erowal SFAZ on Private tenure and conduct mosaic HR burning as required across the SFAZ.	RFS	Private		1718; 1819; 1920; 2021; 2122	42
90	Hazard Reduction	2B	Erowal SFAZ (OEH)	Monitor Erowal SFAZ on OEH tenure and conduct mosaic HR burning as required across the SFAZ.	OEH	RFS		1718; 1819; 1920; 2021; 2122	42

91	Hazard Reduction	2B	Vincentia APZ (OEH)	Inspect and maintain APZ on OEH tenure as required.	OEH			1718; 1819; 1920; 2021; 2122	42
92	Hazard Reduction	2B	Vincentia APZ (LG)	Inspect and maintain APZ on LG tenure as required.	LGA			1718; 1819; 1920; 2021; 2122	42
93	Hazard Reduction	2B	Vincentia SFAZ (NSWRFS)	Monitor Vincentia SFAZ on LG tenure and conduct mosaic HR burning as required across the SFAZ.	RFS	LGA		1718; 1819; 1920; 2021; 2122	42
94	Hazard Reduction	2B	Vincentia SFAZ (OEH)	Monitor Vincentia SFAZ on OEH tenure and conduct mosaic HR burning as required across the SFAZ.	OEH	RFS		1718; 1819; 1920; 2021; 2122	42
95	Hazard Reduction	2B	Huskisson APZ (OEH)	Inspect and maintain APZ on OEH tenure as required.	OEH			1718; 1819; 1920; 2021; 2122	42
96	Hazard Reduction	2B	Huskisson APZ (Crown)	Inspect and maintain APZ on Crown tenure as required.	TI CL			1718; 1819; 1920; 2021; 2122	42
97	Hazard Reduction	2B	Huskisson APZ (LG)	Inspect and maintain APZ on LG tenure as required.	LGA			1718; 1819; 1920; 2021; 2122	42
98	Hazard Reduction	2B	Huskisson SFAZ (NSWRFS)	Monitor Huskisson SFAZ on Crown, Private and LG tenure and conduct mosaic HR burning as required across the SFAZ.	RFS	TI CL; LGA; Private		1718; 1819; 1920; 2021; 2122	42
99	Hazard Reduction	2B	Huskisson SFAZ (OEH)	Monitor Huskisson SFAZ on OEH tenure and conduct mosaic HR burning as required across the SFAZ.	OEH	RFS		1718; 1819; 1920; 2021; 2122	42
100	Community Education	2B	Bay & Basin Fire Workshop	Conduct bushfire preparedness workshop at least every 5 years.	RFS	TI CL; LGA; OEH		1718; 1819; 1920; 2021; 2122	42
101	Hazard Reduction	2B	Erowal SFAZ (NSWRFS)	Monitor Erowal SFAZ on Private tenure and conduct mosaic HR burning as required across the SFAZ.	RFS	Private		1718; 1819; 1920; 2021; 2122	38
102	Hazard Reduction	2B	Vincentia SFAZ (OEH)	Monitor Vincentia SFAZ on OEH tenure and conduct mosaic HR burning as required across the SFAZ.	OEH	RFS		1718; 1819; 1920; 2021; 2122	39
103	Preparedness	2B	Bushfire Planning VHS	Deliver bushfire awareness workshop to School Executive	RFS			1819	39

104	Hazard Reduction	2B	Vincentia SFAZ (OEH)	Monitor Vincentia SFAZ on OEH tenure and conduct mosaic HR burning as required across the SFAZ.	OEH	RFS		1718; 1819; 1920; 2021; 2122	40
105	Hazard Reduction	2B	Bushfire Planning VPS	Deliver bushfire awareness workshop to School Executive	RFS			1819	40
106	Preparedness	2B	Bushfire Planning SIPS	Deliver bushfire awareness workshop to School Executive	RFS			1819	41
107	Hazard Reduction	2B	North Nowra SFAZ (OEH)	Monitor North Nowra SFAZ on OEH tenure and conduct mosaic HR burning as required across the SFAZ.	OEH	RFS		1718; 1819; 1920; 2021; 2122	43
108	Hazard Reduction	2B	North Nowra SFAZ (OEH-FRNSW)	Monitor North Nowra SFAZ on OEH tenure and conduct mosaic HR burning as required across the SFAZ.	OEH	FRNSW		1718; 1819; 1920; 2021; 2122	43
109	Hazard Reduction	2B	North Nowra SFAZ (FRNSW)	Monitor North Nowra SFAZ on Private, Crown and LG tenure and conduct mosaic HR burning as required across the SFAZ.	FRNSW	TI CL; LGA; Private		1718; 1819; 1920; 2021; 2122	43
110	Hazard Reduction	2B	North Nowra SFAZ (NSWRFS)	Monitor North Nowra SFAZ on Private, Crown and LG tenure and conduct mosaic HR burning as required across the SFAZ.	RFS	TI CL; LGA; Private		1718; 1819; 1920; 2021; 2122	43
111	Hazard Reduction	2C	Kingiman APZ (OEH)	Inspect and maintain APZ on OEH tenure as required.	OEH			1718; 1819; 1920; 2021; 2122	44
112	Hazard Reduction	3B	Nowra Urban APZ (Crown)	Inspect and maintain APZ on Crown tenure as required.	TI CL			1718; 1819; 1920; 2021; 2122	54
113	Hazard Reduction	3B	Nowra Urban APZ (LG)	Inspect and maintain APZ on LG tenure as required.	LGA			1718; 1819; 1920; 2021; 2122	54
114	Hazard Reduction	3B	Brundee SFAZ	Monitor Brundee SFAZ on Private tenure and conduct mosaic HR burning as required across the SFAZ.	RFS	Private		1718; 1819; 1920; 2021; 2122	54
115	Hazard Reduction	3B	Hyams APZ (OEH)	Inspect and maintain APZ on OEH tenure as required.	OEH			1718; 1819; 1920; 2021; 2122	55
116	Hazard Reduction	3B	Hyams APZ (Crown)	Inspect and maintain APZ on Crown tenure as required.	TI CL			1718; 1819; 1920; 2021; 2122	55
117	Hazard Reduction	3B	Hyams APZ (LG)	Inspect and maintain APZ on LG tenure as required.	LGA			1718; 1819; 1920; 2021; 2122	55

118	Hazard Reduction	3B	Hyams Beach SFAZ (OEH)	Monitor Hyams Beach SFAZ on OEH tenure and conduct mosaic HR burning as required across the SFAZ.	OEH	RFS		1718; 1819; 1920; 2021; 2122	55
119	Hazard Reduction	3B	Hyams Beach SFAZ (NSWRFS)	Monitor Hyams Beach SFAZ on Private and Crown tenure and conduct mosaic HR burning as required across the SFAZ.	RFS	TI CL		1718; 1819; 1920; 2021; 2122	55
120	Preparedness	3B	Hyams Beach CPP	Prepare Community Protection Plan for Hyams Beach village. (17/18)	RFS	TI CL; LGA; OEH		1718	55
121	Hazard Reduction	3B	Redhead APZ (Crown)	Inspect and maintain APZ on Crown tenure as required.	TI CL			1718; 1819; 1920; 2021; 2122	56
122	Hazard Reduction	3B	Redhead APZ (LG)	Inspect and maintain APZ on LG tenure as required.	LGA			1718; 1819; 1920; 2021; 2122	56
123	Hazard Reduction	3B	Redhead APZ (Private)	Inspect APZ on Private tenure and advise owner if maintenance required.	RFS	Private		1718; 1819; 1920; 2021; 2122	56
124	Hazard Reduction	3B	Redhead SFAZ (NSWRFS)	Monitor Redhead SFAZ on Crown and Private tenure and conduct mosaic HR burning as required across the SFAZ.	RFS	TI CL; Private		1718; 1819; 1920; 2021; 2122	56
125	Hazard Reduction	3B	Redhead SFAZ (OEH)	Monitor Redhead SFAZ on OEH tenure and conduct mosaic HR burning as required across the SFAZ.	OEH	RFS		1718; 1819; 1920; 2021; 2122	56
126	Hazard Reduction	3C	Currarong APZ (Crown)	Inspect and maintain APZ on Crown tenure as required.	TI CL			1617; 1718; 1819; 1920; 2021; 2122	64
127	Hazard Reduction	3C	Currarong APZ (LG)	Inspect and maintain APZ on LG tenure as required.	LGA			1718; 1819; 1920; 2021; 2122	64
128	Hazard Reduction	3C	Currarong SFAZ	Monitor Currarong SFAZ on Crown and LG tenure and conduct mosaic HR burning as required across the SFAZ.	RFS	TI CL		1718; 1819; 1920; 2021; 2122	64

129	Preparedness	3C	Currarong CPP	Prepare Community Protection Plan for Currarong village. (18/19)	RFS	TI CL; LGA; OEH; Defence		1718; 1819; 1920; 2021; 2122	64
130	Hazard Reduction	3C	Ulladulla APZ (Crown)	Inspect and maintain APZ on Crown tenure as required.	TI CL			1718; 1819; 1920; 2021; 2122	65
131	Hazard Reduction	3D	Wairo APZ (Crown)	Inspect and maintain APZ on Crown tenure as required.	TI CL			1718; 1819; 1920; 2021; 2122	79
132	Hazard Reduction	4	Shoalhaven Heads APZ (Crown)	Inspect and maintain APZ on Crown tenure as required.	TI CL			1718; 1819; 1920; 2021; 2122	119
133	Hazard Reduction	4	Shoalhaven Heads SFAZ (NSWRFS)	Monitor Shoalhaven Heads SFAZ on Crown, Private and LG tenure and conduct mosaic HR burning as required across the SFAZ.	RFS	TI CL; LGA; Private		1718; 1819; 1920; 2021; 2122	119
134	Hazard Reduction	4	Shoalhaven Heads SFAZ (OEH)	Monitor Shoalhaven Heads SFAZ on OEH tenure and conduct mosaic HR burning as required across the SFAZ.	OEH	RFS		1718; 1819; 1920; 2021; 2122	119
135	Hazard Reduction	4	South Murramarang SFAZ (OEH)	Monitor South Murramarang SFAZ on OEH tenure and conduct mosaic HR burning as required across the SFAZ.	OEH	RFS		1718; 1819; 1920; 2021; 2122	90;91
136	Hazard Reduction	4	South Murramarang SFAZ (NSWRFS)	Monitor South Murramarang SFAZ on Crown tenure and conduct mosaic HR burning as required across the SFAZ.	RFS	TI CL		1718; 1819; 1920; 2021; 2122	90;91
137	Hazard Reduction	4	Lemon Tree Creek SFAZ (OEH)	Monitor Lemon Tree Creek SFAZ and conduct mosaic HR burning as required across the SFAZ.	OEH	RFS		1718; 1819; 1920; 2021; 2122	122
138	Hazard Reduction	4	Lemon Tree Creek SFAZ (FCNSW)	Monitor Lemon Tree Creek SFAZ and conduct mosaic HR burning as required across the SFAZ.	FCNSW	RFS		1718; 1819; 1920; 2021; 2122	122
139	Hazard Reduction	4	Lemon Tree Creek SFAZ (NSWRFS)	Monitor Lemon Tree Creek SFAZ and conduct mosaic HR burning as required across the SFAZ.	RFS	Private		1718; 1819; 1920; 2021; 2122	122
140	Hazard Reduction	4	Bawley Pt APZ (Crown)	Inspect and maintain APZ on Crown tenure as required.	TI CL			1718; 1819; 1920; 2021; 2122	123

141	Hazard Reduction	4	Kioloa APZ (Crown)	Inspect and maintain APZ on Crown tenure as required.	TI CL			1718; 1819; 1920; 2021; 2122	123
142	Hazard Reduction	4	North Murramarang SFAZ (OEH)	Monitor North Murramarang SFAZ on OEH tenure and conduct mosaic HR burning as required across the SFAZ.	OEH	RFS			123
143	Hazard Reduction	4	North Murramarang SFAZ (NSWRFS)	Monitor North Murramarang SFAZ on Crown and Private tenure and conduct mosaic HR burning as required across the SFAZ.	RFS	TI CL; Private		1718; 1819; 1920; 2021; 2122	123
144	Hazard Reduction	4	Conjola APZ (Crown)	Inspect and maintain APZ on Crown tenure as required.	TI CL			1718; 1819; 1920; 2021; 2122	121
145	Hazard Reduction	4	Lake Conjola SFAZ (NSWRFS)	Monitor Lake Conjola SFAZ on Private and LG tenure and conduct mosaic HR burning as required across the SFAZ.	RFS	LGA; Private		1718; 1819; 1920; 2021; 2122	121
146	Hazard Reduction	4	Lake Conjola SFAZ (OEH)	Monitor Lake Conjola SFAZ on OEH tenure and conduct mosaic HR burning as required across the SFAZ.	OEH	RFS		1718; 1819; 1920; 2021; 2122	121
147	Preparedness	NA	Maintain fuels in accordance with Guidelines - 272	Maintain bush fire fuels at or below the level that meets the Essential Selection Criteria specified in the Neighbourhood Safer Places Guidelines prepared by the NSWRFS.	RFS	Other	DET	1718; 1819; 1920; 2021; 2122	152
148	Preparedness	NA	Maintain fuels in accordance with Guidelines - 268	Maintain bush fire fuels at or below the level that meets the Essential Selection Criteria specified in the Neighbourhood Safer Places Guidelines prepared by the NSWRFS.	RFS	Other	DET	1718; 1819; 1920; 2021; 2122	148
149	Preparedness	NA	Maintain fuels in accordance with Guidelines - 269	Maintain bush fire fuels at or below the level that meets the Essential Selection Criteria specified in the Neighbourhood Safer Places Guidelines prepared by the NSWRFS.	RFS	LGA		1718; 1819; 1920; 2021; 2122	149

150	Preparedness	NA	Maintain fuels in accordance with Guidelines - 270	Maintain bush fire fuels at or below the level that meets the Essential Selection Criteria specified in the Neighbourhood Safer Places Guidelines prepared by the NSWRFSS.	RFS	Private		1718; 1819; 1920; 2021; 2122	150
151	Preparedness	NA	Maintain fuels in accordance with Guidelines - 271	Maintain bush fire fuels at or below the level that meets the Essential Selection Criteria specified in the Neighbourhood Safer Places Guidelines prepared by the NSWRFSS.	RFS	Private		1718; 1819; 1920; 2021; 2122	151
152	Preparedness	NA	Maintain fuels in accordance with Guidelines - 273	Maintain bush fire fuels at or below the level that meets the Essential Selection Criteria specified in the Neighbourhood Safer Places Guidelines prepared by the NSWRFSS.	RFS	LGA		1718; 1819; 1920; 2021; 2122	153
153	Preparedness	NA	Maintain fuels in accordance with Guidelines - 274	Maintain bush fire fuels at or below the level that meets the Essential Selection Criteria specified in the Neighbourhood Safer Places Guidelines prepared by the NSWRFSS.	RFS	LGA		1718; 1819; 1920; 2021; 2122	154
154	Preparedness	NA	Maintain fuels in accordance with Guidelines - 275	Maintain bush fire fuels at or below the level that meets the Essential Selection Criteria specified in the Neighbourhood Safer Places Guidelines prepared by the NSWRFSS.	RFS	LGA		1718; 1819; 1920; 2021; 2122	155
155	Preparedness	NA	Maintain fuels in accordance with Guidelines - 276	Maintain bush fire fuels at or below the level that meets the Essential Selection Criteria specified in the Neighbourhood Safer Places Guidelines prepared by the NSWRFSS.	RFS	LGA		1718; 1819; 1920; 2021; 2122	156

156	Preparedness	NA	Maintain fuels in accordance with Guidelines - 277	Maintain bush fire fuels at or below the level that meets the Essential Selection Criteria specified in the Neighbourhood Safer Places Guidelines prepared by the NSWRFSS.	RFS	Defence		1718; 1819; 1920; 2021; 2122	157
157	Preparedness	NA	Maintain fuels in accordance with Guidelines - 278	Maintain bush fire fuels at or below the level that meets the Essential Selection Criteria specified in the Neighbourhood Safer Places Guidelines prepared by the NSWRFSS.	RFS	Private		1718; 1819; 1920; 2021; 2122	158
158	Preparedness	NA	Maintain fuels in accordance with Guidelines - 279	Maintain bush fire fuels at or below the level that meets the Essential Selection Criteria specified in the Neighbourhood Safer Places Guidelines prepared by the NSWRFSS.	RFS	LGA		1718; 1819; 1920; 2021; 2122	159
159	Preparedness	NA	Maintain fuels in accordance with Guidelines - 280	Maintain bush fire fuels at or below the level that meets the Essential Selection Criteria specified in the Neighbourhood Safer Places Guidelines prepared by the NSWRFSS.	RFS	LGA		1718; 1819; 1920; 2021; 2122	160
160	Hazard Reduction	NA	Maintain fuels in accordance with Guidelines - 281	Maintain bush fire fuels at or below the level that meets the Essential Selection Criteria specified in the Neighbourhood Safer Places Guidelines prepared by the NSWRFSS.	RFS	LGA		1718; 1819; 1920; 2021; 2122	161
161	Preparedness	NA	Maintain fuels in accordance with Guidelines - 282	Maintain bush fire fuels at or below the level that meets the Essential Selection Criteria specified in the Neighbourhood Safer Places Guidelines prepared by the NSWRFSS.	RFS	LGA		1718; 1819; 1920; 2021; 2122	162

162	Preparedness	NA	Maintain fuels in accordance with Guidelines - 283	Maintain bush fire fuels at or below the level that meets the Essential Selection Criteria specified in the Neighbourhood Safer Places Guidelines prepared by the NSWRFSS.	RFS	LGA		1718; 1819; 1920; 2021; 2122	163
163	Preparedness	NA	Maintain fuels in accordance with Guidelines - 284	Maintain bush fire fuels at or below the level that meets the Essential Selection Criteria specified in the Neighbourhood Safer Places Guidelines prepared by the NSWRFSS.	RFS	LGA		1718; 1819; 1920; 2021; 2122	164
164	Preparedness	NA	Maintain fuels in accordance with Guidelines - 285	Maintain bush fire fuels at or below the level that meets the Essential Selection Criteria specified in the Neighbourhood Safer Places Guidelines prepared by the NSWRFSS.	RFS	LGA		1718; 1819; 1920; 2021; 2122	165
165	Preparedness	NA	Maintain fuels in accordance with Guidelines - 286	Maintain bush fire fuels at or below the level that meets the Essential Selection Criteria specified in the Neighbourhood Safer Places Guidelines prepared by the NSWRFSS.	RFS	LGA		1718; 1819; 1920; 2021; 2122	166
166	Preparedness	NA	Maintain fuels in accordance with Guidelines - 287	Maintain bush fire fuels at or below the level that meets the Essential Selection Criteria specified in the Neighbourhood Safer Places Guidelines prepared by the NSWRFSS.	RFS	LGA		1718; 1819; 1920; 2021; 2122	167
167	Preparedness	NA	Maintain fuels in accordance with Guidelines - 288	Maintain bush fire fuels at or below the level that meets the Essential Selection Criteria specified in the Neighbourhood Safer Places Guidelines prepared by the NSWRFSS.	RFS	LGA		1718; 1819; 1920; 2021; 2122	168

168	Preparedness	NA	Maintain fuels in accordance with Guidelines - 289	Maintain bush fire fuels at or below the level that meets the Essential Selection Criteria specified in the Neighbourhood Safer Places Guidelines prepared by the NSWRFSS.	RFS	LGA		1718; 1819; 1920; 2021; 2122	169
169	Preparedness	NA	Maintain fuels in accordance with Guidelines - 290	Maintain bush fire fuels at or below the level that meets the Essential Selection Criteria specified in the Neighbourhood Safer Places Guidelines prepared by the NSWRFSS.	RFS	LGA		1718; 1819; 1920; 2021; 2122	170
170	Preparedness	NA	Maintain fuels in accordance with Guidelines - 291	Maintain bush fire fuels at or below the level that meets the Essential Selection Criteria specified in the Neighbourhood Safer Places Guidelines prepared by the NSWRFSS.	RFS	LGA		1718; 1819; 1920; 2021; 2122	171
171	Preparedness	NA	Maintain fuels in accordance with Guidelines - 292	Maintain bush fire fuels at or below the level that meets the Essential Selection Criteria specified in the Neighbourhood Safer Places Guidelines prepared by the NSWRFSS.	RFS	LGA		1718; 1819; 1920; 2021; 2122	172
172	Preparedness	NA	Maintain fuels in accordance with Guidelines - 293	Maintain bush fire fuels at or below the level that meets the Essential Selection Criteria specified in the Neighbourhood Safer Places Guidelines prepared by the NSWRFSS.	RFS	LGA		1718; 1819; 1920; 2021; 2122	173
173	Preparedness	NA	Maintain fuels in accordance with Guidelines - 294	Maintain bush fire fuels at or below the level that meets the Essential Selection Criteria specified in the Neighbourhood Safer Places Guidelines prepared by the NSWRFSS.	RFS	LGA		1718; 1819; 1920; 2021; 2122	174

174	Preparedness	NA	Maintain fuels in accordance with Guidelines - 313	Maintain bush fire fuels at or below the level that meets the Essential Selection Criteria specified in the Neighbourhood Safer Places Guidelines prepared by the NSWRFES.	RFS	Private		1718; 1819; 1920; 2021; 2122	178
-----	--------------	----	--	--	-----	---------	--	------------------------------	-----

Appendix 4 – Maps

Map 1 – North Shoalhaven

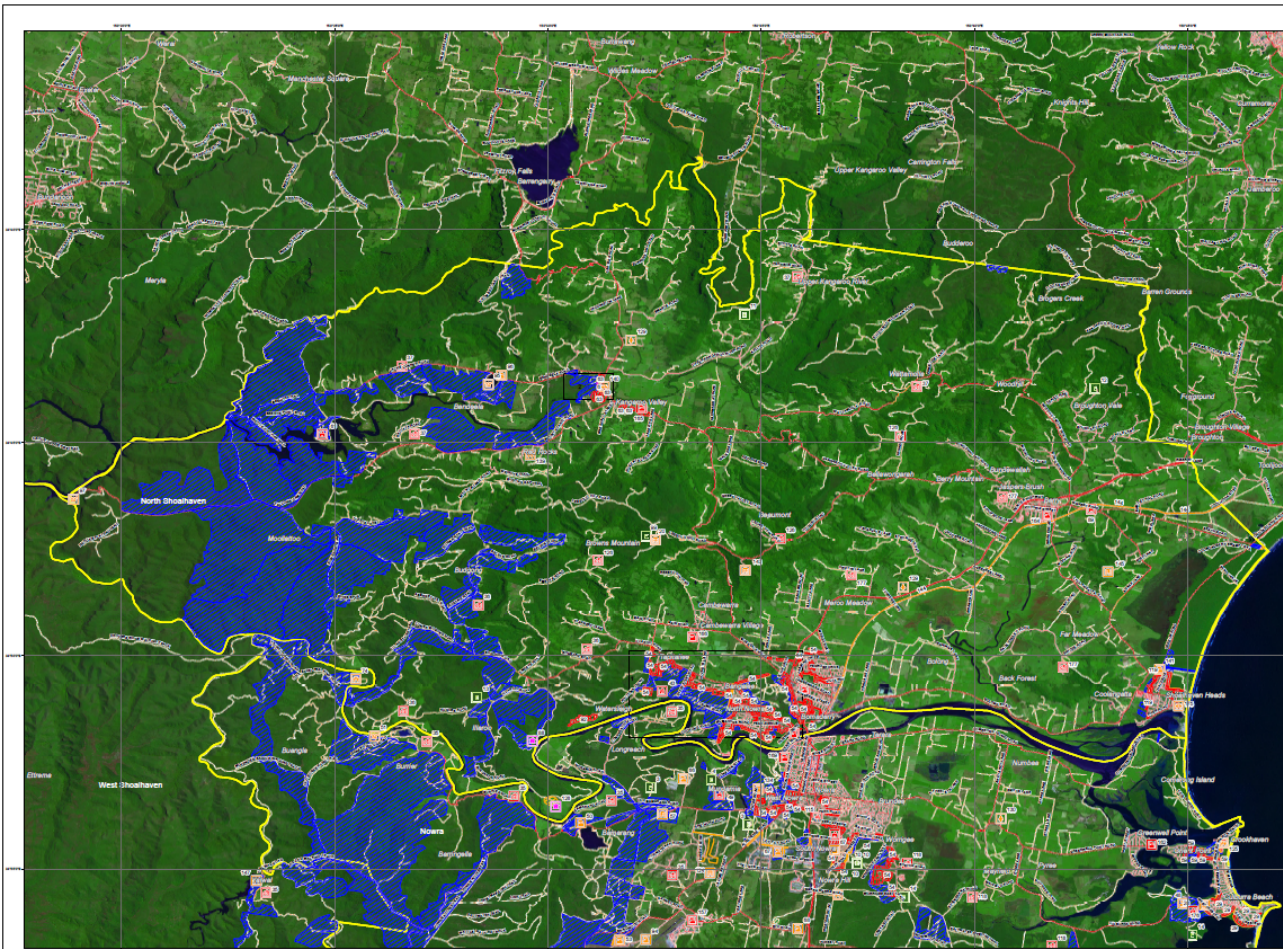
Map 2 – Nowra

Map 3 – Bay & Basin

Map 4 – Ulladulla

Map 5 – South Shoalhaven

Map 6 – West Shoalhaven



Map Ref	Asset Name	Asset Type	Subtype	Risk Level	Priority	Treatment
6	Flower Farm	Cultural	Ruin	Very High	2A	T72.23
20	Red Rocks Cottage Tower	Economic	Infrastructure	Very High	2A	T76
36	Wentworths Farm	Human	Residential	Very High	2A	T69.70.71
37	Wangaroo Valley Farm	Human	Residential	Very High	2A	T72.73.74
45	Shoalhaven Scout Camp	Human	Special Use	Very High	2B	(1)
100	Shoalhaven Heads Village Interface	Human	Residential	Medium	3	(2)
103	HDP Auld South Cove	Human	Other	Low	NA	T165
104	HDP Bary Showground	Human	Other	Low	NA	T165
105	HDP Wangaroo Valley Showground	Human	Other	Low	NA	T164
106	HDP Bay Ahead Village Green	Human	Other	Low	NA	T165
107	HDP Greys Beach Reserve (Blue Range)	Human	Other	Low	NA	T165

(1) T167-168-169-170
(2) T162-163-164



Insetmap 1: North Shoals boundary



Insetmap 2: Wangaroo Valley village

Shoalhaven BFMC Bush Fire Risk Management Plan 2019

North Shoalhaven - Map Display Area Map 1 of 6

This Bush Fire Risk Management Plan (BFRMP) has been prepared by the Shoalhaven Bush Fire Management Committee (BFMC) pursuant to section 61 of the Rural Fire Act 1967.

The aim of this BFRMP is to reduce the adverse impact of bush fire on life, property and the environment.

- The objectives of this BFRMP are to:
 - reduce the number of uninhabited bush fire ignition that cause damage to life, property or the environment;
 - change fire to reduce the spread and intensity of bush fire while maintaining environmental values;
 - reduce the community's vulnerability to bush fire by improving its preparedness; and
 - effectively contain fires with a potential to cause damage to life, property and the environment.

This map forms part of the BFRMP for the Shoalhaven BFMC, covering the local government area of Shoalhaven. It should be viewed in conjunction with the accompanying BFRMP document which provides further details on the BFMC area, the assets assessed and the risk assessment process used.



Review
Under the Rural Fire Act 1967 this plan must be reviewed and updated with each successive five year period following the completion of the BFRMP. The Shoalhaven BFMC will also review this plan as necessary. This may be triggered by a change of circumstances, including but not limited to:
- changes to the BFMC area, organisational responsibilities or legislation;
- changes to the bush fire risk in the area or
- following a major bush fire event.

Assets
The BFRMP identifies the assets that are considered by the Shoalhaven BFMC and continues to be at risk from bush fire, assesses the bush fire risk to each asset and assigns a treatment designed to reduce the risk. Assets in the BFMC area identified as requiring treatment are listed in the asset table. Other assets within the BFMC area that were assessed as not requiring treatment within the life of this plan are listed in the appendix to the BFRMP document. The Map Ref number "NA" denotes non-report assets.

Treatments
Specific treatments designed to assess in the Shoalhaven area are listed in the treatment table and listed to the assets which they are designed to protect. Shoalhaven BFMC will implement fire risk reduction in a specific asset within the area of an existing bush fire risk zone and:
- ensuring developments in the bush fire zone and comply with Planning for Bush Fire Protection;
- using the Local Government Permits (LGP) to control development in areas with a bush fire risk;
- issuing the standard bush fire danger period as required;
- issuing permits during bush fire danger periods;
- investigation of bush fire cause;
- ensure the appropriate compliance with strategic fire-fighting resource allocation management system;
- preparation of a DSE Cooperative Contribution Plan.

Note on LMC: All areas not specifically mapped as an AFD, BFAC or FZC are considered as LMC for this risk management plan. For areas identified as an LMC (except on the map), please refer to the BFRMP document for the specific land management objectives.

Asset	Purpose	Suppression	Zone
Asset Protection Zone	To protect human life, property and high valued public assets and values. To minimise bush fire impact on assets.	To exclude the walls and roof of the asset from suppression strategies within the zone. To minimise bush fire impact on assets.	As per BFRM zoned Asset Protection Zone.
Strategic Fire Advantage Zone	To provide strategic areas of the protection advantages which will reduce the spread and intensity of bush fire, and development. To add commitment of management system to bush fire risk reduction.	To improve the bushfire and safe use of the asset. To reduce the bush fire risk. To reduce the bush fire risk. To reduce the bush fire risk. To reduce the bush fire risk.	Zone width related to suppression and protection objectives: - Strategic - Assets - Strategic - Assets - Strategic - Assets - Strategic - Assets
Land Management Zone	To meet relevant management objectives where AFDs are not appropriate. To reduce the bushfire and roof of the asset from suppression strategies within the zone.	As per the land management objectives of the responsible council/agency. To reduce the bushfire and roof of the asset from suppression strategies within the zone.	As appropriate to the management objectives of the responsible council/agency. To reduce the bushfire and roof of the asset from suppression strategies within the zone.
Fire Exclusion Zone	To exclude bush fire.	N/A	Variable dependent on the size of the asset/area and bushfire protection.

Disclaimer
The Shoalhaven BFMC makes every effort to ensure the quality of the information available on this map. Before relying on the information on this map, users should identify whether it is accurate, complete and relevant for their purposes, and should obtain any appropriate professional advice relevant to their particular circumstances.

The Shoalhaven BFMC can not guarantee and assumes no legal liability or responsibility for the accuracy, correctness or completeness of the information. Copyright Shoalhaven BFMC 2019.
Approved by: Public 10 January 2019
BFRM version 2.1.26.0



Treatments	Action	Agency (Support)
T6	Hazard Reduction	Bulging SFAC (NSWRFPS)
T7	Hazard Reduction	Bulging SFAC (DEH)
T71	Preparedness	Bulging SFAC (DEH)
T72	Hazard Reduction	Wangaroo Valley SFAC (NSWRFPS)
T73	Hazard Reduction	Wangaroo Valley SFAC (DEH)
T74	Community Education	Wangaroo Valley SFAC (DEH)
T75	Hazard Reduction	Red Rocks AFD (LGA)
T76	Hazard Reduction	North Shoals SFAC (DEH)
T77	Hazard Reduction	North Shoals SFAC (DEH)
T78	Hazard Reduction	North Shoals SFAC (FRSWS)
T79	Hazard Reduction	North Shoals SFAC (FRSWS)
T80	Hazard Reduction	North Shoals SFAC (FRSWS)
T81	Hazard Reduction	North Shoals SFAC (FRSWS)
T82	Hazard Reduction	North Shoals SFAC (FRSWS)
T83	Hazard Reduction	Shoalhaven Heads AFD (LGA)
T84	Hazard Reduction	Shoalhaven Heads SFAC (DEH)
T85	Preparedness	Maintain fuel in accordance with Guidelines - RFS (LGA)
T86	Preparedness	Maintain fuel in accordance with Guidelines - RFS (LGA)
T87	Preparedness	Maintain fuel in accordance with Guidelines - RFS (LGA)
T88	Preparedness	Maintain fuel in accordance with Guidelines - RFS (LGA)

