

# **Hawkesbury Bush Fire Management Committee**

## **Bush Fire Risk Management Plan**

## Table of Contents

<i>Glossary</i>	6
<i>Chapter 1. Introduction</i>	8
1.1 Background	8
1.2 Aim and Objectives	8
1.3 Description of the Hawkesbury BFMC Area	9
1.3.1 Location and land tenure	9
1.3.2 Climate and bush fire season	9
1.3.3 Population and demographic information	9
1.3.4 History of bush fire frequency and ignition cause	10
<i>Chapter 2. Identifying and Assessing the Bush Fire Risk</i>	11
2.1 Process	11
2.2 Communication and Consultation	11
2.3 Identifying the Bush Fire Risk	12
2.3.1 Assets	12
2.3.2 Assessing the Bush Fire Risk – Consequence	13
2.3.3 Assessing the Bush Fire Risk - Likelihood	14
2.3.4 Identifying the level of risk	14
2.3.5 Evaluating the Bush Fire Risk	14
2.3.6 Prioritising Treatments	15
2.3.7 Risk Acceptability	15
<i>Chapter 3. Treating the Risk</i>	16
3.1 Bush Fire Management Zones	16
3.2 BFMC Wide Treatments	18
3.3 Asset Specific Treatments	19
3.4 Fire Thresholds	20
3.5 Annual Works Programmes	21
3.6 Implementation	21
<i>Chapter 4. Performance Monitoring and Reviewing</i>	22
4.1 Review	22
4.2 Monitoring	22
4.3 Reporting	22
4.4 Performance Measurements	22
<i>Appendix 1 Community Participation Strategy</i>	23
<i>Appendix 2 Asset Register</i>	23
<i>Appendix 3 Treatment Register</i>	23
<i>Appendix 4 Asset Maps 1-7</i>	23
<i>Appendix 5 Time Since Fire Map</i>	23

*Appendix 6 Fire Frequency Map* 23

*Appendix 7 Fire Threshold Map* 23

**List of Tables**

<i>Table 1.1 Land Tenure</i>	9
<i>Table 3.1 Bush Fire Management Zones: Purpose, objectives and characteristics</i>	17
<i>Table 3.2 Asset specific treatments used in the Hawkesbury BFMC area</i>	19
<i>Table 3.3 Fire Thresholds for Vegetation Categories</i>	20

**List of Figures**

<i>Figure 2.1 Overview of the risk assessment process .....</i>	11
---	----

## Authorisation

In accordance with Part 3 Division 4 of the Rural Fires Act 1997, this Plan has been prepared by the Hawkesbury Bush Fire Management Committee and has been endorsed at the HBFMC meeting on 23<sup>rd</sup> November 2016 for submission to the Bush Fire Coordinating Committee.

### Recommended



Chairperson  
Hawkesbury Bush Fire Management Committee

### Approved



On behalf of the  
NSW Bush Fire Coordinating Committee





## Glossary

**Assets:** anything valued by the community which includes houses, crops, heritage buildings and places, infrastructure, the environment, businesses, and forests, that may be at risk from bush fire.

**Bush Fire:** a general term used to describe fire in vegetation, includes grass fire.

**Bush Fire Hazard:** the potential severity of a bush fire, which is determined by fuel load, fuel arrangement and topography under a given climatic condition.

**Bush Fire Risk:** the chance of a bush fire igniting, spreading and causing damage to the community or the assets they value.

**Bush Fire Risk Management:** a systematic process that provides a range of treatments which contribute to the well-being of communities and the environment, which suffer the adverse effects of wildfire/bush fire.

**Bush Fire Threat:** potential bush fire exposure of an asset due to the proximity and type of a hazard and the slope on which the hazard is situated.

**Consequence:** outcome or impact of a bush fire event.

**Fire Fighting Authorities:** the NSW Rural Fire Service, NSW Fire Brigades, the National Parks and Wildlife Service and Forests NSW.

**Likelihood:** the chance of a bush fire igniting and spreading.

**Major Bush Fire:** A bush fire which requires the attendance of multiple brigades, or causes damage to property or injury to one or more persons.

**Display area:** geographic area determined by the Bush Fire Management Committee which is used to provide a suitable area and scale for community participation and mapping display purposes.

**Recovery costs:** the capacity of an asset to recover from the impacts of a bush fire.

**Risk Acceptance:** an informed decision to accept the consequences and the likelihood of a particular risk.

**Risk Analysis:** a systematic process to understand the nature of and to deduce the level of risk.

**Risk Assessment:** the overall process of risk identification, risk analysis and risk evaluation.

**Risk Identification:** the process of determining what, where, when, why, and how something could happen.

**Risk Treatment:** the process of selection and implementation of measures to modify risk.

**Vulnerability:** the susceptibility of an asset to the impacts of bush fire.

## Chapter 1. Introduction

### 1.1 Background

Under the *Rural Fires Act 1997* the Bush Fire Coordinating Committee (BFCC) must constitute a Bush Fire Management Committee (BFMC) for each area in the State, which is subject to the risk of bush fires. Each BFMC is required to prepare and submit to the BFCC a draft Bush Fire Risk Management Plan (BFRMP).

A BFRMP is a strategic document that identifies community assets at risk and sets out a five-year programme of coordinated multi-agency treatments to reduce the risk of bush fire to the assets. Treatments may include such things as hazard reduction burning, grazing, community education and fire trail maintenance.

Annual programmes to implement the treatments identified in this plan will be undertaken by the relevant land managers and fire fighting authorities.

In exercising its functions under the *Rural Fires Act 1997*, including the preparation of a draft bush fire risk management plan, the Hawkesbury BFMC is required to have regard to the principles of ecologically sustainable development (ESD).

This document and the accompanying maps together form the BFRMP for the Hawkesbury BFMC area.

This BFRMP has been prepared by the Hawkesbury BFMC and covers both public and private lands. This BFRMP must be reviewed and updated within each successive five-year period from the constitution of the BFMC.

The BFCC recognises that climate change has the potential to increase bush fire risk. The risk assessment process applied in this BFRMP is based on current climatic conditions. The BFCC will monitor information on climate change and will modify the process when necessary.

### 1.2 Aim and Objectives

The **aim** of this BFRMP is to minimise the risk of adverse impact of bush fires on life, property and the environment.

The **objectives** of this BFRMP are to:

- reduce the number of human-induced bush fire ignitions that cause damage to life, property and the environment;
- manage fuel to reduce the rate of spread and intensity of bush fires, while minimising environmental/ecological impacts;
- reduce the community's vulnerability to bush fires by improving its preparedness; and
- effectively contain fires with a potential to cause damage to life, property and the environment.

### 1.3 Description of the Hawkesbury BFMC Area

#### 1.3.1 Location and land tenure

The Hawkesbury BFMC area consists of the entire City of Hawkesbury, which comprises an area of 2793 square kilometres to the northwest of Sydney, extending from Windsor in the south, Berambing in the west, 80km north of Windsor on the Putty Road and east to the Old Great North Road. The perimeter includes approximately 48 kilometres of river, 32 kilometres of undulating country and 193 kilometres of rough precipitous broken country in the west and north.

The area covered by the Hawkesbury BFMC is 277,600 hectares and includes the land tenures outlined in Table 1.1.

Land Manager	Approx % of BFMC area
National Parks & Wildlife Service	69%
Forest Corporation	1%
Department of Lands	1%
Local Government	1%
Private	28%

**Table 1.1 Land Tenure**

#### 1.3.2 Climate and bush fire season

The typical / average climate in the Hawkesbury BFMC area is warm summers and cool winters with the most rainfall received during summer and autumn (December to May) and a drier winter and spring (June to November).

The bush fire season generally runs from August through to January.

Prevailing weather conditions associated with the bush fire season in the Hawkesbury BFMC area are westerly or north-westerly winds which may occur at all times of the year. It is the association of these winds with prolonged spells of dry weather in spring and summer that produce Severe, Extreme or Catastrophic conditions that may cause property loss. Dry lightning storms during the late Spring and Summer months can be sources of ignition.

#### 1.3.3 Population and demographic information

The population of the Hawkesbury BFMC area is approximately 66 134 people. The major population centres are Windsor and Richmond where over 90% of residents live. The other 10% live in small and geographically diverse hamlets such as Colo Heights, St Albans and Bilpin.

The following issue has been identified within the Hawkesbury BFMC area as potentially impacting on the ability of certain sections of the community to prepare themselves for bush fire: high numbers of property owners travelling out of the area to work (53% of the working population in 2001).

### **1.3.4 History of bush fire frequency and ignition cause**

The Hawkesbury BFMC area has on average 265 bush fires per year, of which 20 on average can be considered to be major fires.

The main sources of ignition in the Hawkesbury BFMC area are:

- Motor vehicle fires
- Arson
- Accidental
- Lightning
- Escaped landowner burns

## Chapter 2. Identifying and Assessing the Bush Fire Risk

### 2.1 Process

The Australia/New Zealand Standard *AS/NZS 4360: 2004 Risk Management* was used as the basis for the risk assessment process. See Figure 2.1 for the steps involved. For a detailed description of the process undertaken see the Bush Fire Risk Management Planning Guidelines for Bush Fire Management Committees on the RFS website: [www.rfs.nsw.gov.au](http://www.rfs.nsw.gov.au).

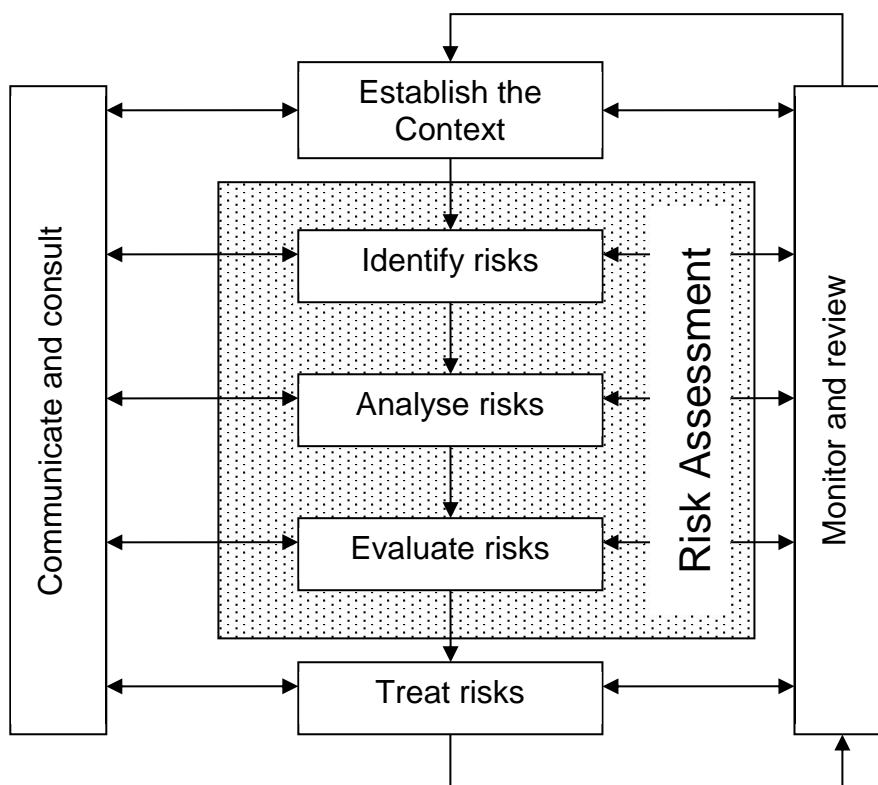


Figure 2.1 Overview of the risk assessment process

### 2.2 Communication and Consultation

Community participation is an integral part of risk management. The Community Participation Strategy involved developing and implementing a process to address the needs, issues and concerns of stakeholders within the BFMC area in regards to the BFRMP. See Appendix 1 for the Community Participation Strategy used by the Hawkesbury BFMC in preparing this BFRMP.

## **2.3 Identifying the Bush Fire Risk**

Identifying the level of bush fire risk firstly involved identifying important community assets considered to be at risk from bush fire in the Hawkesbury BFMC area, and then assessing the likelihood and consequence ratings.

### **2.3.1 Assets**

BFMC members and the community, including RFS volunteers, identified assets within the Hawkesbury BFMC that they believed were at risk of bush fire.

The assets were divided into four asset types:

#### **Human settlement**

- Residential areas including urban bushland interface areas and rural properties;
- Special Fire Protection areas including schools, hospitals, nursing homes, and tourist facilities; and
- Other human settlement areas including commercial and industrial areas where distinct from major towns.

#### **Economic**

- Agricultural; e.g. major silos, regional saleyards, cropping/grazing land;
- Commercial/industrial e.g. major industries, waste treatment plants, sawmills;
- Infrastructure e.g. large power lines, gas and oil pipelines, railway lines, electricity substations, communication facilities;
- Tourist and recreational e.g. tourist sites and facilities, resorts, retreats;
- Mines;
- Commercial forests e.g. pine plantations, eucalypt plantations and commercial native forests; and
- Drinking water catchments.

#### **Environmental**

- Threatened species, populations and ecological communities and Ramsar wetlands;
- Locally important species and ecological communities, such as species and ecological communities especially sensitive to fire.



## **Cultural**

- Aboriginal significance – Aboriginal places and items of significance;
- Non-indigenous heritage – places and items arising from the early occupation of NSW by European or other non-indigenous settlers; and
- Other cultural assets – community halls, clubs and recreational facilities.

See Appendix 2 for the full list of assets identified in the Hawkesbury BFMC area. See maps 1-7 for the location of assets to be treated under this BFRMP.

### **2.3.2 Assessing the Bush Fire Risk – Consequence**

Once the assets were identified, the consequence of a bush fire impacting on these assets was assessed.

See Appendix 2 for the consequence ratings assigned to each asset identified in the Hawkesbury BFMC area.

The different asset types had different assessment processes used to determine the consequence. These processes are identified below.

#### **Human settlement**

A potential fire behaviour model using vegetation type, slope and separation distance was used to produce a threat rating for human settlement assets. The vulnerability of the asset to a bush fire was also assessed and a rating assigned. These ratings were then used to assess the consequence of a bush fire impacting upon a human settlement asset.

Special Fire Protection (SFP) assets were considered inherently more vulnerable to bush fire due to mobility capacity, knowledge or other issues relating to their inhabitants, (e.g. the elderly, infirm, children or tourists) and therefore stricter requirements for vulnerability assessment and rating were applied.

#### **Economic**

The level of economic impact e.g. local, regional or state, as well as the economic recovery costs (how long and complicated a financial recovery will be) of the asset were identified. These ratings were used to assess the consequence of a bush fire impacting upon an economic asset.

## **Environmental**

Environmental assets with known minimum fire threshold were assessed to determine if they were at risk of a bush fire within the 5 year life of the BFRMP using fire history and fire threshold data. Those environmental assets which were within or above the fire threshold were not assessed in the BFRMP, as the negative impact of a fire within the 5 year period was determined as being low and may even be of benefit to the asset and surrounding habitat.

The vulnerability of an environmental asset was determined by its conservation status and its geographic extent (distribution across the landscape). Vulnerability and potential impact of bush fire were used to assess the consequence of a bush fire impacting upon an environmental asset.

## **Cultural**

For non-indigenous historical, Aboriginal and other cultural assets a potential fire behaviour model using fuel load, slope and proximity was used to produce a threat rating. The physical vulnerability of the asset to a bush fire was also assessed. These ratings were then used to assess the consequence of a bush fire impacting upon a cultural asset.

### **2.3.3 Assessing the Bush Fire Risk - Likelihood**

For all asset types the likelihood of a bush fire occurring was assessed. This involves considering fire history, including ignition cause and patterns, known fire paths, access, containment potential and potential fire run (size of the vegetated area). See Appendix 2 for the likelihood ratings assigned to each asset identified in the Hawkesbury BFMC area.

### **2.3.4 Identifying the level of risk**

The consequence and likelihood ratings were then used to identify the level of risk. See Appendix 2 for the risk ratings assigned to each asset identified in the Hawkesbury BFMC area.

### **2.3.5 Evaluating the Bush Fire Risk**

Once the risk ratings for each asset were identified, they were evaluated to:

- a) confirm that risk levels identified in the risk analysis process are appropriate and reflect the relative seriousness of the bush fire risk;
- b) identify which assets require treatments; and
- c) identify treatment priorities.

### **2.3.6 Prioritising Treatments**

No organisation has limitless resources to deal with adverse risk. It is therefore necessary to define priorities. The bush fire risk ratings determined were used to prioritise the risk treatments, i.e. areas of extreme risk were considered first for treatment, then very high, then high then medium then low.

### **2.3.7 Risk Acceptability**

Risks below a certain level were assessed as not requiring treatment within the life of this plan. This is due to a combination of the fire fighting resources available and the risk level of the asset. Within the Hawkesbury BFMC area the level of acceptability is medium. Areas of medium or low risk are likely to be managed by routine procedures and so do not require a specific application of resources.

## **Chapter 3. Treating the Risk**

### **3.1 Bush Fire Management Zones**

Bush Fire Management Zones were identified within the Hawkesbury BFMC area and mapped (see maps 1-7). These zones identify the fire management intent for a specific area. See Table 3.1 for descriptions of the zones and their purposes. The four categories of Bush Fire Management Zones are:

- Asset Protection Zone (APZ);
- Strategic Fire Advantage Zone (SFAZ);
- Land Management Zone (LMZ); and
- Fire Exclusion Zone (FEZ).

<b>Zone</b>	<b>Purpose</b>	<b>Suppression Objective(s)</b>	<b>Zone characteristics</b>
<b>Asset Protection Zone</b>	To protect human life, property and highly valued public assets and values.	To enable the safe use of <b>Direct Attack</b> suppression strategies within the zone. To minimise bush fire impacts on undefended assets.	As per RFS document <i>Standards for Asset Protection Zones</i> .
<b>Strategic Fire Advantage Zone</b>	To provide strategic areas of fire protection advantage which will reduce the speed and intensity of bush fires, and reduce the potential for spot fire development;  To aid containment of wildfires to existing management boundaries.	To improve the likelihood and safe use of:  <b>Parallel Attack</b> suppression strategies within the zone. and/or <b>Indirect Attack</b> (back burning) in high to very high fire weather conditions within the zone.  To reduce the likelihood of: Crown fire development within the zone. and/or Spot fire ignition potential from the zone	Zone width related to suppression objectives and dependant upon: <ul style="list-style-type: none"> <li>• Topography</li> <li>• Aspect</li> <li>• Spotting propensity</li> <li>• Location of adjacent firebreaks</li> <li>• Mosaic pattern of treatment</li> </ul> Assess Overall Fuel Hazard (OFH) once vegetation communities reach minimum fire thresholds within this plan.  Management practices should aim to achieve mosaic fuel reduction patterns so that the majority of the SFAZ has an OFH of less than high.
<b>Land Management Zone</b>	To meet relevant land management objectives in areas where APZs or SFAZs are not appropriate.	As per the land management and fire protection objectives of the responsible land management agency.  To reduce the likelihood of spread of fires.  To undertake mosaic burning	As appropriate to achieve land management e.g. heritage and/or fire protection e.g. broad scale mosaic burning objectives.
<b>Fire Exclusion Zone</b>	To exclude bush fires.	N/A	Variable dependant on size of fire sensitive area requiring protection.

**Table 3.1 Bush Fire Management Zones: Purpose, objectives and characteristics**

NB: OFH refers the Overall Fuel Hazard Guide as described in the document published by (Dept. of Sustainability and Environment 3<sup>rd</sup> ed. 1999 & NPWS version); State-wide procedures for assessment of fuel hazard will be developed in conjunction with the BFCC.

**Note:** All areas that are not mapped or described as APZs or SFAZs are considered as LMZs.

### **3.2 BFMC Wide Treatments**

BFMC wide treatments are activities which reduce the overall bush fire risk within the BFMC area and are undertaken on an ongoing basis as part of normal business. These treatments are not linked to specific assets in the BFRMP, rather they are applied across all or part of the BFMC area as designated by legislation or agency policy. BFMC wide treatments include the following:

- **Reviewing the bush fire prone land map**

These maps identify bush fire prone land and are used to trigger whether a development application is assessed using *Planning for Bush Fire Protection*<sup>1</sup>.

- **Ensuring developments in bush fire prone land comply with *Planning for Bush Fire Protection***

This assessment process requires new applications for development to include bush fire protection measures.

- **Using the Local Environment Plan/s (LEPs) to control developments in areas with a bush fire risk**

LEPs can be used to exclude development in extreme bush fire risk areas or where bush fire protection measures cannot be incorporated.

- **Varying the standard bush fire danger period as required**

In years where the weather is particularly adverse the bush fire danger period may be brought in early or extended. This is assessed every year by the BFMC.

- **Requiring permits during the bush fire danger period**

In the bush fire danger period a fire safety permit is required to light a fire in the open. Permits specify conditions such as fire fighting equipment that must be on site, or restrict burns based on weather conditions.

- **Prosecution of arsonists/offenders**

Under the *Rural Fires Act 1997* persons may be prosecuted for breaching the conditions on a fire permit, lighting a fire during a Total Fire Ban, allowing fire to escape their property, or other breaches of the Act.

- **Investigation of bush fire cause**

All bush fires which do not have a known cause are investigated to identify how they started.

- **Normal fire suppression activities**

Responding to bush fire is a normal business activity for the fire fighting authorities.

---

<sup>1</sup> NSW Rural Fire Service 2006 *Planning for Bush Fire Protection: A guide for councils, planners, fire authorities and developers*.

- **Assessing and managing compliance with strategic fire fighting resource allocation provisions**

Strategic fire fighting resource allocation provisions is the process used to identify the number of stations, brigades and appliances required in an area, and considers members, training, assets and hazards.

- **Preparation of a S52 Operations Coordination Plan**

The Operations Coordination Plan is prepared biannually and sets out how coordinated fire fighting will occur. It includes specific operational restrictions on fire fighting techniques in certain areas, where fires will be managed from, and how agencies involved can communicate during operations.

- **Fire Management Plans or Plans of Management**

Some land management agencies have developed fire management plans or plans of management with specific fire or fuel management strategies, for example a Forests NSW Regional Fuel Management Risk Plan, a NPWS Fire Management Strategy. These publicly exhibited plans form the basis for operational fire planning on public parks, reserves and forests.

- **Bush Fire Hazard Complaints**

If someone is concerned about possible bush fire hazards on a neighbouring property or any other land, then this can be reported to the RFS Commissioner or their local RFS Fire Control Centre. The complaint will be investigated and may result in a notice being issued to the landowner or manager to reduce the hazard.

### **3.3 Asset Specific Treatments**

There are four broad strategy groups available to treat the bush fire risk to assets identified in the BFRMP.

The types of asset specific treatments in each strategy group used in the Hawkesbury BFMC area are listed below. A full list of the treatment strategies in the Hawkesbury BFMC area are in Appendix 3.

<b>Strategy</b>	<b>Targeted treatments used in the Hawkesbury BFMC area</b>
Hazard Reduction	Implement BFMC annual burning programme Inspect APZ and maintain as required
Community Education	Undertake community engagement activity
Property Planning	Develop emergency bushfire relocation plan
Preparedness	Develop/implement firetrail maintenance programme

**Table 3.2 Asset specific treatments used in the Hawkesbury BFMC area**

### 3.4 Fire Thresholds

The vegetation in the Hawkesbury BFMC area was classified into fire threshold categories (Table 3.3\*). See map 10 for fire threshold mapping of the vegetation in the Hawkesbury BFMC area.

Vegetation formation	Minimum SFAZ Threshold	Minimum LMZ Threshold	Maximum Threshold	Notes
Rainforest	NA	NA	NA	Fire should be avoided.
Alpine complex	NA	NA	NA	Fire should be avoided.
Wet Sclerophyll forest (shrubby subformation)	25	30	60	Crown fires should be avoided in the lower end of the interval range.
Wet Sclerophyll forest (grassy subformation)	10	15	50	Crown fires should be avoided in the lower end of the interval range.
Grassy woodland	5	8	40	Minimum interval of 10 years should apply in the southern Tablelands area. Occasional intervals greater than 15 years may be desirable.
Grassland	2	3	10	Occasional intervals greater than 7 years should be included in coastal areas. There was insufficient data to give a maximum interval; available evidence indicates maximum intervals should be approximately 10 years.
Dry sclerophyll forest (shrub/grass subformation)	5	8	50	Occasional intervals greater than 25 years may be desirable.
Dry sclerophyll forest (shrub subformation)	7	10	30	Occasional intervals greater than 25 years may be desirable.
Heathlands	7	10	30	Occasional intervals greater than 20 years may be desirable.
Freshwater wetlands	6	10	35	Occasional intervals greater than 30 years may be desirable.
Forested wetlands	7	10	35	Some intervals greater than 20 years may be desirable.
Saline wetlands	NA	NA	NA	Fire should be avoided.
Semi-arid woodlands (grassy subformation)	6	9	No max	Not enough data for a maximum fire interval.
Semi-arid woodlands (shrubby subformation)	10	15	No Max	Not enough data for a maximum fire interval.
Arid shrublands (chenopod subformation)	NA	NA	NA	Fire should be avoided.
Arid shrublands (acacia subformation)	10	15	No Max	Not enough data for a maximum fire interval.

**Table 3.3 Fire Thresholds for Vegetation Categories**



### ***3.5 Annual Works Programmes***

The land management agencies and fire fighting authorities responsible for implementing the treatments identified in this plan will include those treatments in their annual works programmes detailing how, when, and where the required activities will be undertaken.

### ***3.6 Implementation***

When the treatments identified in this BFRMP are implemented there are a number of issues that need to be considered by the responsible agency including environmental assessments and approvals, smoke management and prescribed burn plans.

## **Chapter 4. Performance Monitoring and Reviewing**

### **4.1 Review**

This BFRMP must be reviewed and updated within each successive five-year period from the constitution of the BFMC. The Hawkesbury BFMC will also review this plan as necessary to account for any changes in context or risk. This may be triggered by a range of circumstances, including but not limited to:

- changes to the BFMC area, organisational responsibilities or legislation;
- changes to the bush fire risk in the area; or
- following a major fire event.

### **4.2 Monitoring**

The BFMC is required to monitor progress towards the completion of treatment works listed in the BFRMP, and the timeliness of the works.

### **4.3 Reporting**

The BFMC is required to report annually to the BFCC on its progress in implementing the bush fire risk management activities identified in this plan.

### **4.4 Performance Measurements**

State wide performance measurements which are linked to the BFRMP have been identified by the BFCC. All BFMCs must use these to monitor and report on their success in reducing the bush fire risk in their BFMC area.

## **Appendices**

### **Appendix 1 Community Participation Strategy**

### **Appendix 2 Asset Register**

### **Appendix 3 Treatment Register**

### **Appendix 4 Asset Maps 1-7**

- Map 1 – Wollemi
- Map 2 – Macdonald
- Map 3 – Bells Line
- Map 4 – Windsor Richmond
- Map 5 – Central
- Map 6 – Grose
- Map 7 - Scheyville

### **Appendix 5 Time Since Fire Map**

### **Appendix 6 Fire Frequency Map**

### **Appendix 7 Fire Threshold Map**

Appendix 1 - Hawkesbury BFMC Community Participation Strategy

<b>Date</b>	<b>Target Audience</b>	<b>Method of communication</b>	<b>Agency/ies responsible/attending</b>	<b>Completed</b>
24/05/2016	BFMC	Presentation/discussion at meeting	RFS	Yes
21/07/2016	RFS Group Officers	Presentation/discussion at meeting	RFS	
/ /2016	RFS Captains/Sector	Presentation/discussion at meeting	RFS	
/ /2016	Community	Advertisement in local paper	RFS, Council	
/ /2016	Community	Information station at council chambers	RFS, Council	
/ /2016	Community	Exhibit on Facebook	RFS	
/ /2016	Community	Make available for access and dissemination in online Drop Box	RFS	
/ /2016	Community	Consult OEH and aboriginal councils direct	RFS	

Appendix 2 - Asset Register

Map Ref No.	Asset type	Asset sub type	Asset name	Display area	Likelihood	Consequence	Risk	Priority	Treatment number
1	Human Settlement	Residential	Bowen Mountain	Grose	Almost certain	Catastrophic	Extreme	1A	1;2;4;5;7
2	Human Settlement	Residential	Wheeny	Central	Almost certain	Catastrophic	Extreme	1A	1;3;4
3	Human Settlement	Special Fire Protection	Boongarie	Central	Almost certain	Catastrophic	Extreme	1A	1;4;8
4	Human Settlement	Residential	Ironbark	Central	Almost certain	Catastrophic	Extreme	1A	1;4;6
5	Human Settlement	Other	Wat Buddha Dharma	Macdonald	Almost certain	Catastrophic	Extreme	1A	1;4;9
6	Human Settlement	Special Fire Protection	Wood's Property	Grose	Almost certain	Catastrophic	Extreme	1A	1;4;10
7	Human Settlement	Residential	Greens Road Isolated	Macdonald	Likely	Catastrophic	Extreme	1B	1;12
8	Human Settlement	Residential	Putty Road assets	Wollemi	Almost certain	Major	Extreme	1C	1;4;14
9	Human Settlement	Residential	Isolated properties along Barina Drive	Wollemi	Almost certain	Major	Extreme	1C	1;4;13
10	Environment	Endangered	Major consequence flora & fauna	Bells Line ;Central;Grose; Macdonald; Scheyville; Windsor Richmond; Wollemi	Likely	Major	Very High	2A	11
11	Human Settlement	Residential	Reedy Rd	Scheyville	Likely	Major	Very High	2A	1;4;15
12	Human Settlement	Residential	Peat Place	Central	Likely	Major	Very High	2A	1;4;16
13	Human Settlement	Residential	Laws Farm Rd	Central	Likely	Major	Very High	2A	1;4;17
14	Human Settlement	Residential	Packer Rd	Central	Likely	Major	Very High	2A	1;4;18
15	Human Settlement	Residential	Wheelbarrow Ridge Road	Macdonald	Likely	Major	Very High	2A	1;4;19
16	Human Settlement	Residential	Tizzana	Central	Likely	Major	Very High	2A	1;4;20
17	Human Settlement	Residential	East Kurrajong	Central	Likely	Major	Very High	2A	1;4;21
18	Human Settlement	Residential	Bull Ridge	Central	Likely	Major	Very High	2A	1;4;22
19	Human Settlement	Residential	Mountain Lagoon	Bells Line	Possible	Catastrophic	Very High	2B	1;4;23
20	Human Settlement	Residential	Kurrajong Heights village	Bells Line	Possible	Catastrophic	Very High	2B	1;4;24
21	Human Settlement	Residential	The Islands	Bells Line	Possible	Catastrophic	Very High	2B	1;4;25
22	Human Settlement	Residential	Bells Line of Rd assets	Bells Line	Almost certain	Moderate	Very High	2C	1;4;27
23	Human Settlement	Residential	Colo River	Central	Almost certain	Moderate	Very High	2C	1;4;28
24	Human Settlement	Residential	Greens Creek	Macdonald	Almost certain	Moderate	Very High	2C	1;4;26
25	Economic	Tourist and Recreational	Camp Elim	Wollemi	Almost certain	Moderate	Very High	2C	1;4;29
26	Economic	Infrastructure	Grassy Hill PMR repeater	Wollemi	Almost certain	Moderate	Very High	2C	1;4;30
27	Human Settlement	Residential	Oakville	Scheyville	Likely	Moderate	High	3A	1;4;31

Appendix 2 - Asset Register

Map Ref No.	Asset type	Asset sub type	Asset name	Display area	Likelihood	Consequence	Risk	Priority	Treatment number
28	Human Settlement	Residential	Chaseling Road	Macdonald	Likely	Moderate	High	3A	1;4;32
29	Human Settlement	Residential	Gees Arm asset	Central	Likely	Moderate	High	3A	1;4;33
30	Cultural	Non Indigenous	Upper Half Moon cultural sites	Macdonald	Likely	Moderate	High	3A	1;4
31	Human Settlement	Special Fire Protection	South Juniors Resort	Macdonald	Likely	Moderate	High	3A	1;4;35
32	Human Settlement	Residential	Webbs Creek isolated properties	Macdonald	Likely	Moderate	High	3A	1;4;34
33	Human Settlement	Residential	Boundary Rd	Scheyville	Possible	Major	High	3B	1;4;36
34	Human Settlement	Residential	Saunders Rd	Scheyville	Possible	Major	High	3B	1;2;4
35	Human Settlement	Residential	MacDonald Valley assets	Macdonald	Possible	Major	High	3B	1;4;42
36	Human Settlement	Residential	Upper Macdonald Valley	Macdonald	Possible	Major	High	3B	1;4;43
37	Human Settlement	Residential	Grose Wold	Grose	Possible	Major	High	3B	1;4;37;45
38	Human Settlement	Residential	Kurrajong Hills	Central	Possible	Major	High	3B	1;4;38
39	Human Settlement	Residential	Yarramundi	Grose	Possible	Major	High	3B	1;4;41
40	Human Settlement	Residential	Bligh Park	Windsor Richmond	Possible	Major	High	3B	1;4;39
41	Human Settlement	Residential	Windsor Downs	Windsor Richmond	Possible	Major	High	3B	1;4;39
42	Human Settlement	Residential	Overton	Central	Possible	Major	High	3B	1;4;40
43	Human Settlement	Residential	Fernances	Macdonald	Possible	Major	High	3B	1;4;44
44	Economic	Infrastructure	Kurrajong Heights towers	Grose	Possible	Major	High	3B	1;4
45	Economic	Agricultural	Pepe's Duck Farm	Wollemi	Almost certain	Minor	High	3D	1;4;46
46	Economic	Tourist and Recreational	Nissan Car Club	Wollemi	Almost certain	Minor	High	3D	1;4
47	Economic	Infrastructure	Kurrajong Heights PMR repeater	Grose	Almost certain	Minor	High	3D	1;4
48	Human Settlement	Residential	Maraylya	Scheyville	Unlikely	Major	Medium	4	
49	Human Settlement	Residential	Avondale Rd	Scheyville	Unlikely	Major	Medium	4	
50	Human Settlement	Residential	Upper Half Moon Farm	Macdonald	Unlikely	Major	Medium	4	
51	Human Settlement	Residential	Itchenstoke	Bells Line	Possible	Moderate	Medium	4	
52	Human Settlement	Residential	Grose Vale	Central	Possible	Moderate	Medium	4	
53	Human Settlement	Residential	Nepean Park	Grose	Possible	Moderate	Medium	4	
54	Human Settlement	Residential	Glossodia	Central	Possible	Moderate	Medium	4	
55	Human Settlement	Residential	St Albans village	Macdonald	Possible	Moderate	Medium	4	

Appendix 2 - Asset Register

Map Ref No.	Asset type	Asset sub type	Asset name	Display area	Likelihood	Consequence	Risk	Priority	Treatment number
56	Economic	Tourist and Recreational	DECC visitor sites	Bells Line ;Central;Grose; Macdonald; Scheyville; Windsor Richmond; Wollemi	Likely	Minor	Medium	4	47
57	Human Settlement	Residential	Fairey Rd	Windsor Richmond	Possible	Moderate	Medium	4	
58	Human Settlement	Special Fire Protection	St Shenouda Monastery	Wollemi	Possible	Moderate	Medium	4	48
59	Environment	Endangered	Medium risk endangered ecological communities	Scheyville;Windsor Richmond	Likely	Minor	Medium	4	11
60	Human Settlement	Residential	Pitt Town North	Scheyville	Unlikely	Minor	Low	NA	
61	Human Settlement	Residential	Commercial Rd	Scheyville	Unlikely	Moderate	Low	NA	
62	Economic	Tourist and Recreational	Colo Riverside Caravan Park	Macdonald	Unlikely	Moderate	Low	NA	
63	Human Settlement	Residential	Nardoo	Macdonald	Unlikely	Moderate	Low	NA	
64	Human Settlement	Residential	Cumberland Reach	Central	Unlikely	Moderate	Low	NA	
65	Human Settlement	Residential	Bells Rd	Central	Unlikely	Moderate	Low	NA	
66	Human Settlement	Residential	Peels	Central	Unlikely	Minor	Low	NA	
67	Human Settlement	Residential	Agnes Banks	Windsor Richmond	Unlikely	Moderate	Low	NA	
68	Human Settlement	Residential	Hobartville	Windsor Richmond	Unlikely	Minor	Low	NA	
69	Human Settlement	Residential	Kurrajong Village	Central	Unlikely	Moderate	Low	NA	
70	Human Settlement	Residential	Tennyson	Central	Unlikely	Minor	Low	NA	
71	Human Settlement	Residential	The Slopes	Central	Unlikely	Minor	Low	NA	
72	Human Settlement	Residential	Freemans Reach	Central	Unlikely	Minor	Low	NA	
73	Human Settlement	Residential	Wilberforce	Central	Unlikely	Minor	Low	NA	
74	Economic	Mines	Tinda Creek Sand Mine	Wollemi	Possible	Minor	Low	NA	
75	Economic	Tourist and Recreational	Del Rio Resort	Macdonald	Unlikely	Moderate	Low	NA	
76	Human Settlement	Residential	Pitt Town	Scheyville	Unlikely	Moderate	Low	NA	
77	Human Settlement	Other	NSP - Maraylya Park	Scheyville	Unlikely	Moderate	Low	NA	49
78	Human Settlement	Other	NSP - Nepean Park	Grose	Unlikely	Moderate	Low	NA	49
0	Environment	Vulnerable	Other flora & fauna	Bells Line ;Central;Grose; Macdonald; Scheyville; Windsor Richmond; Wollemi	Likely	Minor	Medium	4	11
0	Environment	Endangered	High risk endangered ecological communities	Bells Line ;Central;Grose; Macdonald; Scheyville; Windsor Richmond; Wollemi	Likely	Moderate	High	3A	11

Appendix 2 - Asset Register

Map Ref No.	Asset type	Asset sub type	Asset name	Display area	Likelihood	Consequence	Risk	Priority	Treatment number
0	Environment	Locally Important	Fire sensitive vegetation	Bells Line ;Central;Grose; Macdonald; Scheyville; Windsor Richmond; Wollemi	Likely	Moderate	High	3A	11
0	Cultural	Aboriginal Significance	High vulnerability Aboriginal sites	Bells Line ;Central;Grose; Macdonald; Scheyville; Windsor Richmond; Wollemi	Likely	Catastrophic	Extreme	1B	11;4
0	Cultural	Aboriginal Significance	Other Aboriginal sites	Bells Line ;Central;Grose; Macdonald; Scheyville; Windsor Richmond; Wollemi	Likely	Major	Very High	2A	11;4
0	Cultural	Non Indigenous	High vulnerability non-indigenous sites	Bells Line ;Central;Grose; Macdonald; Scheyville; Windsor Richmond; Wollemi	Likely	Catastrophic	Extreme	1B	11
0	Cultural	Non Indigenous	Other non-indigenous sites	Bells Line ;Central;Grose; Macdonald; Scheyville; Windsor Richmond; Wollemi	Likely	Major	Very High	2A	11



Priority (Risk Rating)	Asset ID	Asset Name	Asset Location	Class	Subclass	Strategy	Treatment ID	Action Description	Responsible Agencies	Other RA	Support Agencies	1718	1819	1920	2021	
1A (Extreme)	1	Bowen Mountain		Human Settlement	Residential	Community Education	2	Undertake community engagement activity	FRNSW;RFS			[1718]	[1819]	[1920]	[2021]	
						Hazard Reduction	1	Implement BFMC approved hazard reduction programme	TI CL;LGA;OEH;Private		FRNSW;RFS	[1718]	[1819]	[1920]	[2021]	
							7	Inspect Eastern APZ and maintain as required	TI CL			[1718]	[1819]	[1920]	[2021]	
						Preparedness	4	Review/implement firetrail maintenance programme	TI CL;LGA;OEH;Private;RFS;DPI			[1718]	[1819]	[1920]	[2021]	
	2	Wheeny		Human Settlement	Residential	Community Education	3	Undertake community engagement activity	FRNSW;RFS				[1718]	[1819]	[1920]	[2021]
						Hazard Reduction	1	Implement BFMC approved hazard reduction programme	TI CL;LGA;OEH;Private		FRNSW;RFS	[1718]	[1819]	[1920]	[2021]	
						Preparedness	4	Review/implement firetrail maintenance programme	TI CL;LGA;OEH;Private;RFS;DPI			[1718]	[1819]	[1920]	[2021]	
	3	Boongarie		Human Settlement	Special Fire Protection	Community Education	8	Undertake community engagement activity	FRNSW;RFS				[1718]	[1819]	[1920]	[2021]
						Hazard Reduction	1	Implement BFMC approved hazard reduction programme	TI CL;LGA;OEH;Private		FRNSW;RFS	[1718]	[1819]	[1920]	[2021]	
						Preparedness	4	Review/implement firetrail maintenance programme	TI CL;LGA;OEH;Private;RFS;DPI			[1718]	[1819]	[1920]	[2021]	
	4	Ironbark		Human Settlement	Residential	Community Education	6	Undertake community engagement activity	FRNSW;RFS				[1718]	[1819]	[1920]	[2021]
						Hazard Reduction	1	Implement BFMC approved hazard reduction programme	TI CL;LGA;OEH;Private		FRNSW;RFS	[1718]	[1819]	[1920]	[2021]	
						Preparedness	4	Review/implement firetrail maintenance programme	TI CL;LGA;OEH;Private;RFS;DPI			[1718]	[1819]	[1920]	[2021]	
	5	Wat Buddha Dharma		Human Settlement	Other	Community Education	9	Undertake community engagement activity	FRNSW;RFS				[1718]	[1819]	[1920]	[2021]
						Hazard Reduction	1	Implement BFMC approved hazard reduction programme	TI CL;LGA;OEH;Private		FRNSW;RFS	[1718]	[1819]	[1920]	[2021]	
						Preparedness	4	Review/implement firetrail maintenance programme	TI CL;LGA;OEH;Private;RFS;DPI			[1718]	[1819]	[1920]	[2021]	
	6	Wood's Property		Human Settlement	Special Fire Protection	Community Education	10	Undertake community engagement activity	FRNSW;RFS				[1718]	[1819]	[1920]	[2021]
						Hazard Reduction	1	Implement BFMC approved hazard reduction programme	TI CL;LGA;OEH;Private		FRNSW;RFS	[1718]	[1819]	[1920]	[2021]	
						Preparedness	4	Review/implement firetrail maintenance programme	TI CL;LGA;OEH;Private;RFS;DPI			[1718]	[1819]	[1920]	[2021]	
	1B (Extreme)	0	High vulnerability Aboriginal sites		Cultural Heritage	Aboriginal Significance	Preparedness	4	Review/implement firetrail maintenance programme	TI CL;LGA;OEH;Private;RFS;DPI			[1718]	[1819]	[1920]	[2021]
			High vulnerability non-indigenous sites					11	Review/Update Management Guidelines for IMTs	OEH;FRNSW;RFS;DPI;Other	LALC	TI CL;LGA	[1718]	[1819]	[1920]	[2021]
		7	Greens Road Isolated		Human Settlement	Residential	Community Education	12	Undertake community engagement activity	FRNSW;RFS			[1718]	[1819]	[1920]	[2021]
	1C (Extreme)	8	Putty Road assets		Human Settlement	Residential	Hazard Reduction	1	Implement BFMC approved hazard reduction programme	TI CL;LGA;OEH;Private		FRNSW;RFS	[1718]	[1819]	[1920]	[2021]
							Preparedness	4	Review/implement firetrail maintenance programme	TI CL;LGA;OEH;Private;RFS;DPI			[1718]	[1819]	[1920]	[2021]
Community Education							14	Undertake community engagement activity	FRNSW;RFS			[1718]	[1819]	[1920]	[2021]	
9		Isolated properties along Barina Drive		Human Settlement	Residential	Community Education	13	Undertake community engagement activity	FRNSW;RFS				[1718]	[1819]	[1920]	[2021]
						Hazard Reduction	1	Implement BFMC approved hazard reduction programme	TI CL;LGA;OEH;Private		FRNSW;RFS	[1718]	[1819]	[1920]	[2021]	
						Preparedness	4	Review/implement firetrail maintenance programme	TI CL;LGA;OEH;Private;RFS;DPI			[1718]	[1819]	[1920]	[2021]	
2A (Very High)	0	Other Aboriginal sites		Cultural Heritage	Aboriginal Significance	Preparedness	4	Review/implement firetrail maintenance programme	TI CL;LGA;OEH;Private;RFS;DPI			[1718]	[1819]	[1920]	[2021]	
		Other non-indigenous sites					11	Review/Update Management Guidelines for IMTs	OEH;FRNSW;RFS;DPI;Other	LALC	TI CL;LGA	[1718]	[1819]	[1920]	[2021]	
	10	Major consequence flora & fauna		Environmental	Endangered			Review/Update Management Guidelines for IMTs	OEH;FRNSW;RFS;DPI;Other	LALC	TI CL;LGA	[1718]	[1819]	[1920]	[2021]	
	11	Reedy Rd		Human Settlement	Residential	Community Education	15	Undertake community engagement activity	FRNSW;RFS				[1819]		[2021]	
						Hazard Reduction	1	Implement BFMC approved hazard reduction programme	TI CL;LGA;OEH;Private		FRNSW;RFS	[1718]	[1819]	[1920]	[2021]	
						Preparedness	4	Review/implement firetrail maintenance programme	TI CL;LGA;OEH;Private;RFS;DPI			[1718]	[1819]	[1920]	[2021]	
	12	Peat Place		Human Settlement	Residential	Community Education	16	Undertake community engagement activity	FRNSW;RFS					[1920]		
						Hazard Reduction	1	Implement BFMC approved hazard reduction programme	TI CL;LGA;OEH;Private		FRNSW;RFS	[1718]	[1819]	[1920]	[2021]	
						Preparedness	4	Review/implement firetrail maintenance programme	TI CL;LGA;OEH;Private;RFS;DPI			[1718]	[1819]	[1920]	[2021]	
	13	Laws Farm Rd		Human Settlement	Residential	Community Education	17	Undertake community engagement activity	FRNSW;RFS					[1819]		
						Hazard Reduction	1	Implement BFMC approved hazard reduction programme	TI CL;LGA;OEH;Private		FRNSW;RFS	[1718]	[1819]	[1920]	[2021]	
						Preparedness	4	Review/implement firetrail maintenance programme	TI CL;LGA;OEH;Private;RFS;DPI			[1718]	[1819]	[1920]	[2021]	
	14	Packer Rd		Human Settlement	Residential	Community Education	18	Undertake community engagement activity	FRNSW;RFS					[1819]		
						Hazard Reduction	1	Implement BFMC approved hazard reduction programme	TI CL;LGA;OEH;Private		FRNSW;RFS	[1718]	[1819]	[1920]	[2021]	
						Preparedness	4	Review/implement firetrail maintenance programme	TI CL;LGA;OEH;Private;RFS;DPI			[1718]	[1819]	[1920]	[2021]	
	15	Wheelbarrow Ridge Road		Human Settlement	Residential	Community Education	19	Undertake community engagement activity	FRNSW;RFS					[1819]		
						Hazard Reduction	1	Implement BFMC approved hazard reduction programme	TI CL;LGA;OEH;Private		FRNSW;RFS	[1718]	[1819]	[1920]	[2021]	
						Preparedness	4	Review/implement firetrail maintenance programme	TI CL;LGA;OEH;Private;RFS;DPI			[1718]	[1819]	[1920]	[2021]	
	16	Tizzana		Human Settlement	Residential	Community Education	20	Undertake community engagement activity	FRNSW;RFS				[1718]	[1819]	[1920]	[2021]
						Hazard Reduction	1	Implement BFMC approved hazard reduction programme	TI CL;LGA;OEH;Private		FRNSW;RFS	[1718]	[1819]	[1920]	[2021]	
						Preparedness	4	Review/implement firetrail maintenance programme	TI CL;LGA;OEH;Private;RFS;DPI			[1718]	[1819]	[1920]	[2021]	
	17	East Kurradjong		Human Settlement	Residential	Community Education	21	Undertake community engagement activity	FRNSW;RFS				[1718]	[1819]	[1920]	[2021]
						Hazard Reduction	1	Implement BFMC approved hazard reduction programme	TI CL;LGA;OEH;Private		FRNSW;RFS	[1718]	[1819]	[1920]	[2021]	
						Preparedness	4	Review/implement firetrail maintenance programme	TI CL;LGA;OEH;Private;RFS;DPI			[1718]	[1819]	[1920]	[2021]	
18	Bull Ridge		Human Settlement	Residential	Community Education	22	Undertake community engagement activity	FRNSW;RFS					[1819]			
					Hazard Reduction	1	Implement BFMC approved hazard reduction programme	TI CL;LGA;OEH;Private		FRNSW;RFS	[1718]	[1819]	[1920]	[2021]		
					Preparedness	4	Review/implement firetrail maintenance programme	TI CL;LGA;OEH;Private;RFS;DPI			[1718]	[1819]	[1920]	[2021]		
2B (Very High)	19	Mountain Lagoon		Human Settlement	Residential	Community Education	23	Undertake community engagement activity	FRNSW;RFS				[1819]			
						Hazard Reduction	1	Implement BFMC approved hazard reduction programme	TI CL;LGA;OEH;Private		FRNSW;RFS	[1718]	[1819]	[1920]	[2021]	
						Preparedness	4	Review/implement firetrail maintenance programme	TI CL;LGA;OEH;Private;RFS;DPI			[1718]	[1819]	[1920]	[2021]	
	20	Kurradjong Heights village		Human Settlement	Residential	Community Education	24	Undertake community engagement activity	FRNSW;RFS					[1819]		
						Hazard Reduction	1	Implement BFMC approved hazard reduction programme	TI CL;LGA;OEH;Private		FRNSW;RFS	[1718]	[1819]	[1920]	[2021]	
						Preparedness	4	Review/implement firetrail maintenance programme	TI CL;LGA;OEH;Private;RFS;DPI			[1718]	[1819]	[1920]	[2021]	
21	The Islands		Human Settlement	Residential	Community Education	25	Undertake community engagement activity	FRNSW;RFS					[1819]			
					Hazard Reduction	1	Implement BFMC approved hazard reduction programme	TI CL;LGA;OEH;Private		FRNSW;RFS	[1718]	[1819]	[1920]	[2021]		
					Preparedness	4	Review/implement firetrail maintenance programme	TI CL;LGA;OEH;Private;RFS;DPI			[1718]	[1819]	[1920]	[2021]		

Priority (Risk Rating)	Asset ID	Asset Name	Asset Location	Class	Subclass	Strategy	Treatment ID	Action Description	Responsible Agencies	Other RA	Support Agencies	1718	1819	1920	2021		
2C (Very High)	22	Bells Line of Rd assets		Human Settlement	Residential	Community Education	27	Undertake community engagement activity	FRNSW;RFS			[1718]	[1819]	[1920]	[2021]		
						Hazard Reduction	1	Implement BFMC approved hazard reduction programme	TI CL;LGA;OEH;Private		FRNSW;RFS	[1718]	[1819]	[1920]	[2021]		
						Preparedness	4	Review/implement firetrail maintenance programme	TI CL;LGA;OEH;Private;RFS;DPI			[1718]	[1819]	[1920]	[2021]		
	23	Colo River		Human Settlement	Residential	Community Education	28	Undertake community engagement activity	FRNSW;RFS					[1819]	[2021]		
						Hazard Reduction	1	Implement BFMC approved hazard reduction programme	TI CL;LGA;OEH;Private		FRNSW;RFS	[1718]	[1819]	[1920]	[2021]		
						Preparedness	4	Review/implement firetrail maintenance programme	TI CL;LGA;OEH;Private;RFS;DPI			[1718]	[1819]	[1920]	[2021]		
	24	Greens Creek		Human Settlement	Residential	Community Education	26	Undertake community engagement activity	FRNSW;RFS					[1920]			
						Hazard Reduction	1	Implement BFMC approved hazard reduction programme	TI CL;LGA;OEH;Private		FRNSW;RFS	[1718]	[1819]	[1920]	[2021]		
						Preparedness	4	Review/implement firetrail maintenance programme	TI CL;LGA;OEH;Private;RFS;DPI			[1718]	[1819]	[1920]	[2021]		
	25	Camp Elim		Economic	Tourist and Recreation	Community Education	29	Undertake community engagement activity	FRNSW;RFS					[1718]	[1819]	[1920]	[2021]
						Hazard Reduction	1	Implement BFMC approved hazard reduction programme	TI CL;LGA;OEH;Private		FRNSW;RFS	[1718]	[1819]	[1920]	[2021]		
						Preparedness	4	Review/implement firetrail maintenance programme	TI CL;LGA;OEH;Private;RFS;DPI			[1718]	[1819]	[1920]	[2021]		
26	Grassy Hill PMR repeater		Economic	Infrastructure	Hazard Reduction	1	Implement BFMC approved hazard reduction programme	TI CL;LGA;OEH;Private			FRNSW;RFS	[1718]	[1819]	[1920]	[2021]		
						30	Inspect site and maintain as required	RFS			[1718]	[1819]	[1920]	[2021]			
					Preparedness	4	Review/implement firetrail maintenance programme	TI CL;LGA;OEH;Private;RFS;DPI			[1718]	[1819]	[1920]	[2021]			
3A (High)	0	Fire sensitive vegetation		Environmental	Locally Important	11	Review/Update Management Guidelines for IMTs	OEH;FRNSW;RFS;DPI;Other	LALC	TI CL;LGA	[1718]	[1819]	[1920]	[2021]			
		High risk endangered ecological communities			Endangered		Review/Update Management Guidelines for IMTs	OEH;FRNSW;RFS;DPI;Other	LALC	TI CL;LGA	[1718]	[1819]	[1920]	[2021]			
	27	Oakville		Human Settlement	Residential	Community Education	31	Undertake community engagement activity	RFS		FRNSW	[1718]	[1819]	[1920]	[2021]		
						Hazard Reduction	1	Implement BFMC approved hazard reduction programme	TI CL;LGA;OEH;Private		FRNSW;RFS	[1718]	[1819]	[1920]	[2021]		
						Preparedness	4	Review/implement firetrail maintenance programme	TI CL;LGA;OEH;Private;RFS;DPI			[1718]	[1819]	[1920]	[2021]		
						Community Education	32	Undertake community engagement activity	FRNSW;RFS				[1819]				
						Hazard Reduction	1	Implement BFMC approved hazard reduction programme	TI CL;LGA;OEH;Private		FRNSW;RFS	[1718]	[1819]	[1920]	[2021]		
						Preparedness	4	Review/implement firetrail maintenance programme	TI CL;LGA;OEH;Private;RFS;DPI			[1718]	[1819]	[1920]	[2021]		
	28	Chaseling Road		Human Settlement	Residential	Community Education	33	Undertake community engagement activity	FRNSW;RFS								
						Hazard Reduction	1	Implement BFMC approved hazard reduction programme	TI CL;LGA;OEH;Private		FRNSW;RFS	[1718]	[1819]	[1920]	[2021]		
						Preparedness	4	Review/implement firetrail maintenance programme	TI CL;LGA;OEH;Private;RFS;DPI			[1718]	[1819]	[1920]	[2021]		
	29	Gees Arm asset		Human Settlement	Residential	Community Education	33	Undertake community engagement activity	FRNSW;RFS								
						Hazard Reduction	1	Implement BFMC approved hazard reduction programme	TI CL;LGA;OEH;Private		FRNSW;RFS	[1718]	[1819]	[1920]	[2021]		
						Preparedness	4	Review/implement firetrail maintenance programme	TI CL;LGA;OEH;Private;RFS;DPI			[1718]	[1819]	[1920]	[2021]		
	30	Upper Half Moon cultural sites		Cultural Heritage	Non Indigenous	Hazard Reduction	1	Implement BFMC approved hazard reduction programme	TI CL;LGA;OEH;Private		FRNSW;RFS	[1718]	[1819]	[1920]	[2021]		
						Preparedness	4	Review/implement firetrail maintenance programme	TI CL;LGA;OEH;Private;RFS;DPI			[1718]	[1819]	[1920]	[2021]		
	31	South Juniors Resort		Human Settlement	Special Fire Protection	Community Education	35	Undertake community engagement activity	FRNSW;RFS				[1718]	[1819]	[1920]	[2021]	
						Hazard Reduction	1	Implement BFMC approved hazard reduction programme	TI CL;LGA;OEH;Private		FRNSW;RFS	[1718]	[1819]	[1920]	[2021]		
Preparedness						4	Review/implement firetrail maintenance programme	TI CL;LGA;OEH;Private;RFS;DPI			[1718]	[1819]	[1920]	[2021]			
32	Webbs Creek isolated properties		Human Settlement	Residential	Community Education	34	Undertake community engagement activity	FRNSW;RFS				[1819]					
					Hazard Reduction	1	Implement BFMC approved hazard reduction programme	TI CL;LGA;OEH;Private		FRNSW;RFS	[1718]	[1819]	[1920]	[2021]			
					Preparedness	4	Review/implement firetrail maintenance programme	TI CL;LGA;OEH;Private;RFS;DPI			[1718]	[1819]	[1920]	[2021]			
3B (High)	33	Boundary Rd		Human Settlement	Residential	Community Education	36	Undertake community engagement activity	FRNSW;RFS			[1718]	[1819]	[1920]	[2021]		
						Hazard Reduction	1	Implement BFMC approved hazard reduction programme	TI CL;LGA;OEH;Private		FRNSW;RFS	[1718]	[1819]	[1920]	[2021]		
						Preparedness	4	Review/implement firetrail maintenance programme	TI CL;LGA;OEH;Private;RFS;DPI			[1718]	[1819]	[1920]	[2021]		
	34	Saunders Rd		Human Settlement	Residential	Community Education	2	Undertake community engagement activity	FRNSW;RFS				[1718]	[1819]	[1920]	[2021]	
						Hazard Reduction	1	Implement BFMC approved hazard reduction programme	TI CL;LGA;OEH;Private		FRNSW;RFS	[1718]	[1819]	[1920]	[2021]		
						Preparedness	4	Review/implement firetrail maintenance programme	TI CL;LGA;OEH;Private;RFS;DPI			[1718]	[1819]	[1920]	[2021]		
	35	MacDonald Valley assets		Human Settlement	Residential	Community Education	42	Undertake community engagement activity	FRNSW;RFS				[1819]		[2021]		
						Hazard Reduction	1	Implement BFMC approved hazard reduction programme	TI CL;LGA;OEH;Private		FRNSW;RFS	[1718]	[1819]	[1920]	[2021]		
						Preparedness	4	Review/implement firetrail maintenance programme	TI CL;LGA;OEH;Private;RFS;DPI			[1718]	[1819]	[1920]	[2021]		
	36	Upper Macdonald Valley		Human Settlement	Residential	Community Education	43	Undertake community engagement activity	FRNSW;RFS				[1819]				
						Hazard Reduction	1	Implement BFMC approved hazard reduction programme	TI CL;LGA;OEH;Private		FRNSW;RFS	[1718]	[1819]	[1920]	[2021]		
						Preparedness	4	Review/implement firetrail maintenance programme	TI CL;LGA;OEH;Private;RFS;DPI			[1718]	[1819]	[1920]	[2021]		
	37	Grose Wold		Human Settlement	Residential	Community Education	37	Undertake community engagement activity	FRNSW;RFS				[1718]	[1819]	[1920]	[2021]	
						Hazard Reduction	1	Implement BFMC approved hazard reduction programme	TI CL;LGA;OEH;Private		FRNSW;RFS	[1718]	[1819]	[1920]	[2021]		
							45	Inspect APZ and maintain as required	OEH			[1718]	[1819]	[1920]	[2021]		
	38	Kurrajong Hills		Human Settlement	Residential	Preparedness	4	Review/implement firetrail maintenance programme	TI CL;LGA;OEH;Private;RFS;DPI				[1718]	[1819]	[1920]	[2021]	
						Community Education	38	Undertake community engagement activity	FRNSW;RFS				[1819]				
						Hazard Reduction	1	Implement BFMC approved hazard reduction programme	TI CL;LGA;OEH;Private		FRNSW;RFS	[1718]	[1819]	[1920]	[2021]		
39	Yarramundi		Human Settlement	Residential	Preparedness	4	Review/implement firetrail maintenance programme	TI CL;LGA;OEH;Private;RFS;DPI				[1718]	[1819]	[1920]	[2021]		
					Community Education	39	Undertake community engagement activity	FRNSW				[1819]					
					Hazard Reduction	1	Implement BFMC approved hazard reduction programme	TI CL;LGA;OEH;Private		FRNSW;RFS	[1718]	[1819]	[1920]	[2021]			
40	Bligh Park		Human Settlement	Residential	Preparedness	4	Review/implement firetrail maintenance programme	TI CL;LGA;OEH;Private;RFS;DPI				[1718]	[1819]	[1920]	[2021]		
					Community Education	39	Undertake community engagement activity	FRNSW				[1819]					
					Hazard Reduction	1	Implement BFMC approved hazard reduction programme	TI CL;LGA;OEH;Private		FRNSW;RFS	[1718]	[1819]	[1920]	[2021]			
41	Windsor Downs		Human Settlement	Residential	Preparedness	4	Review/implement firetrail maintenance programme	TI CL;LGA;OEH;Private;RFS;DPI				[1718]	[1819]	[1920]	[2021]		
					Community Education	39	Undertake community engagement activity	FRNSW				[1819]					
					Hazard Reduction	1	Implement BFMC approved hazard reduction programme	TI CL;LGA;OEH;Private		FRNSW;RFS	[1718]	[1819]	[1920]	[2021]			
42	Overton		Human Settlement	Residential	Preparedness	4	Review/implement firetrail maintenance programme	TI CL;LGA;OEH;Private;RFS;DPI				[1718]	[1819]	[1920]	[2021]		
					Community Education	40	Undertake community engagement activity	FRNSW;RFS				[1819]					
					Hazard Reduction	1	Implement BFMC approved hazard reduction programme	TI CL;LGA;OEH;Private		FRNSW;RFS	[1718]	[1819]	[1920]	[2021]			
43	Fernances		Human Settlement	Residential	Preparedness	4	Review/implement firetrail maintenance programme	TI CL;LGA;OEH;Private;RFS;DPI				[1718]	[1819]	[1920]	[2021]		
					Community Education	44	Undertake community engagement activity	FRNSW;RFS				[1819]					
					Hazard Reduction	1	Implement BFMC approved hazard reduction programme	TI CL;LGA;OEH;Private		FRNSW;RFS	[1718]	[1819]	[1920]	[2021]			

Priority (Risk Rating)	Asset ID	Asset Name	Asset Location	Class	Subclass	Strategy	Treatment ID	Action Description	Responsible Agencies	Other RA	Support Agencies	1718	1819	1920	2021		
	44	Kurrajong Heights towers		Economic	Infrastructure	Hazard Reduction	1	Implement BFMC approved hazard reduction programme	TI CL;LGA;OEH;Private		FRNSW;RFS	[1718]	[1819]	[1920]	[2021]		
						Preparedness	4	Review/implement firetrail maintenance programme	TI CL;LGA;OEH;Private;RFS;DPI			[1718]	[1819]	[1920]	[2021]		
3D (High)	45	Pepe's Duck Farm		Economic	Agricultural	Community Education	46	Undertake community engagement activity	FRNSW;RFS								
						Hazard Reduction	1	Implement BFMC approved hazard reduction programme	TI CL;LGA;OEH;Private		FRNSW;RFS	[1718]	[1819]	[1920]	[2021]		
	Preparedness	4	Review/implement firetrail maintenance programme	TI CL;LGA;OEH;Private;RFS;DPI			[1718]	[1819]	[1920]	[2021]							
	46	Nissan Car Club		Economic	Tourist and Recreation	Hazard Reduction	1	Implement BFMC approved hazard reduction programme	TI CL;LGA;OEH;Private		FRNSW;RFS	[1718]	[1819]	[1920]	[2021]		
Preparedness						4	Review/implement firetrail maintenance programme	TI CL;LGA;OEH;Private;RFS;DPI			[1718]	[1819]	[1920]	[2021]			
	47	Kurrajong Heights PMR repeater		Economic	Infrastructure	Hazard Reduction	1	Implement BFMC approved hazard reduction programme	TI CL;LGA;OEH;Private		FRNSW;RFS	[1718]	[1819]	[1920]	[2021]		
						Preparedness	4	Review/implement firetrail maintenance programme	TI CL;LGA;OEH;Private;RFS;DPI			[1718]	[1819]	[1920]	[2021]		
4 (Medium)	0	Other flora & fauna		Environmental	Vulnerable	Preparedness	11	Review/Update Management Guidelines for IMTs	OEH;FRNSW;RFS;DPI;Other	LALC	TI CL;LGA	[1718]	[1819]	[1920]	[2021]		
	48	Maraylya		Human Settlement	Residential												
	49	Avondale Rd															
	50	Upper Half Moon Farm															
	51	Itchenstoke															
	52	Grose Vale															
	53	Nepean Park															
	54	Glossodia															
	55	St Albans village															
	56	DECC visitor sites		Economic	Tourist and Recreation	Preparedness	47	Inspect & maintain as required.	OEH			[1718]	[1819]	[1920]	[2021]		
	57	Fairey Rd		Human Settlement	Residential												
58	St Shenouda Monastery	Putty Rd 2km south of Yengo		Human Settlement	Special Fire Protection	Hazard Reduction	48	Maintain APZ	Private		RFS		[1819]				
59	Medium risk endangered ecological communities		Environmental	Endangered	Preparedness	11	Review/Update Management Guidelines for IMTs	OEH;FRNSW;RFS;DPI;Other	LALC	TI CL;LGA	[1718]	[1819]	[1920]	[2021]			
NA (Low)	60	Pitt Town North		Human Settlement	Residential												
	61	Commercial Rd															
	62	Colo Riverside Caravan Park		Economic	Tourist and Recreation												
	63	Nardoo															
	64	Cumberland Reach															
	65	Bells Rd															
	66	Peels															
	67	Agnes Banks															
	68	Hobartville															
	69	Kurrajong Village															
	70	Tennyson															
	71	The Slopes															
	72	Freemans Reach															
	73	Wilberforce															
	74	Tinda Creek Sand Mine															
	75	Del Rio Resort		Economic	Mines												
	76	Pitt Town		Human Settlement	Residential												
	77	NSP - Maraylya Park	Cnr Boundary Rd & Dunns Rd		Human Settlement	Other	Hazard Reduction	49	Maintain fuels in accordance with Guidelines	LGA			[1718]	[1819]	[1920]	[2021]	
	78	NSP - Nepean Park	Shearwater Crs Yarramundi		Human Settlement	Other	Hazard Reduction	49	Maintain fuels in accordance with Guidelines	LGA			[1718]	[1819]	[1920]	[2021]	



# Hawkesbury BFMC Bush Fire Risk Management Plan 2017

## Wollemi - Map Display Area Map 1 of 7

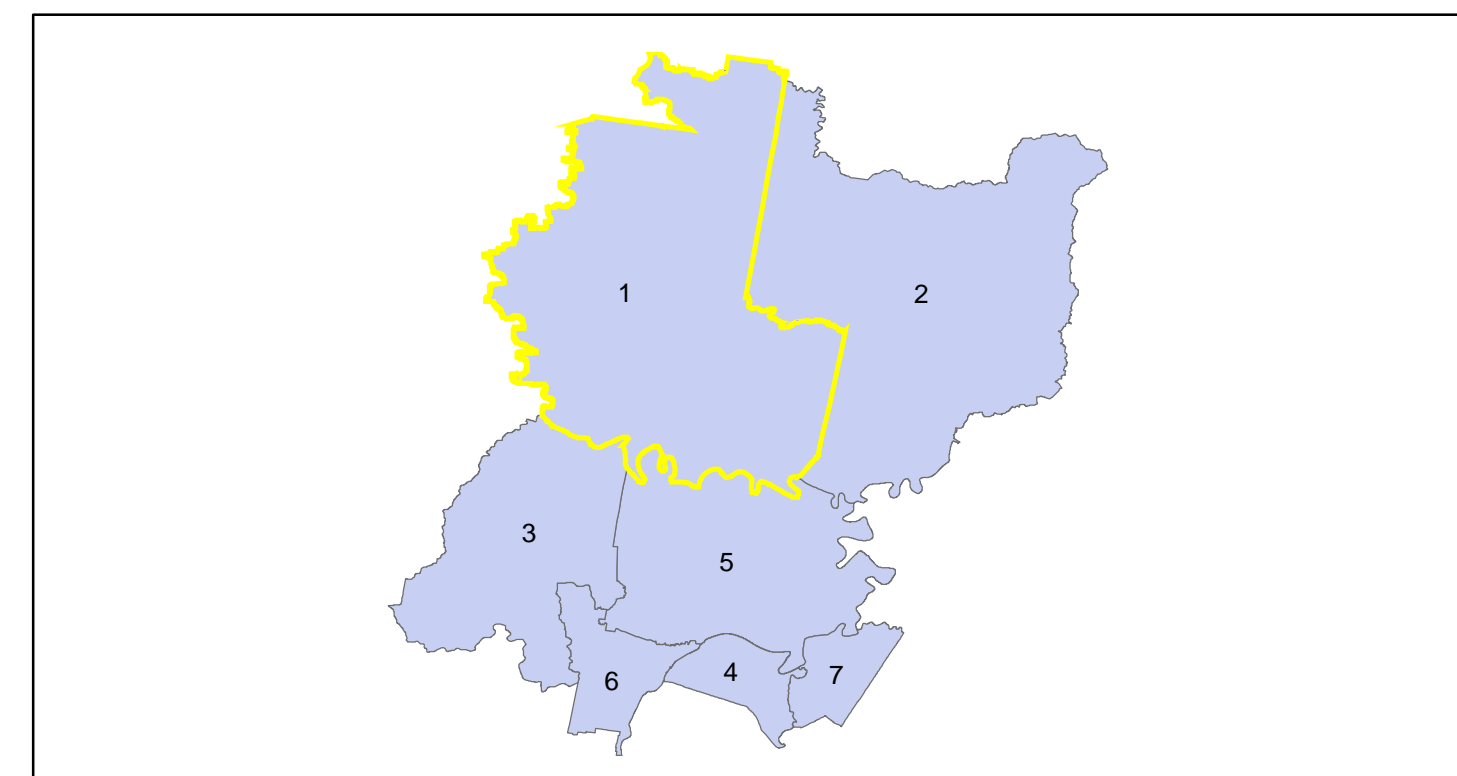
This Bush Fire Risk Management Plan (BFRMP) has been prepared by the Hawkesbury Bush Fire Management Committee (BFMC) pursuant to section 52 of the Rural Fires Act 1997.

The aim of this BFRMP is to reduce the adverse impact of bush fires on life, property and the environment.

The objectives of this BFRMP are to:

- reduce the number of human-induced bush fire ignitions that cause damage to life, property or the environment;
- manage fuel to reduce the spread and intensity of bush fires while minimising environmental/ecological impacts;
- reduce the community's vulnerability to bush fires by improving its preparedness; and
- effectively contain fires with a potential to cause damage to life, property and the environment.

This map forms part of the BFRMP for the Hawkesbury BFMC, covering the local government area(s) of Hawkesbury. It should be viewed in conjunction with the accompanying BFRMP document which provides further details on the BFMC area, the assets assessed and the risk assessment process used.



**Review**  
Under the Rural Fires Act 1997 this plan must be reviewed and updated within each successive five year period following the constitution of the BFMC. The Hawkesbury BFMC will also review this plan as necessary. This may be triggered by a range of circumstances, including but not limited to:

- changes to the BFMC area, organisational responsibilities or legislation;
- changes to the bush fire risk in the area; or
- following a major fire event.

**Assets**  
This BFRMP identifies the assets that are considered by the Hawkesbury BFMC and community to be at risk from bush fires, assesses the bush fire risk to each asset and assigns treatments designed to mitigate the risk. Assets in the BFMC area identified as requiring treatments are listed in the assets table. Other assets within the BFMC area that were assessed as not requiring treatments within the life of this plan are listed in the appendix to the BFRMP document. The Map Ref number "NA" denotes non-spatial assets.

**Treatments**  
Specific treatments assigned to assets in the Hawkesbury area are listed in the treatments table and linked to the assets which they are designed to protect. Standard BFMC wide treatments (i.e. not linked to a specific asset) which occur on an ongoing basis within the BFMC area are:

- reviewing the bush fire prone land map;
- ensuring developments in the bush fire prone land comply with Planning for Bush Fire Protection;
- using the Local Environment Plans (LEPs) to control development in areas with a bush fire risk;
- paying the standard bush fire danger period as required;
- requiring permits during bush fire danger periods
- prosecution of arsonists/offenders
- investigation of bush fire cause;
- normal fire suppression activities;
- assessing and managing compliance with strategic fire-fighting resource allocation management systems;
- preparation of a S2 Operations Coordination Plan;
- fire management plans or plans of management; and
- bush fire hazard complaints.

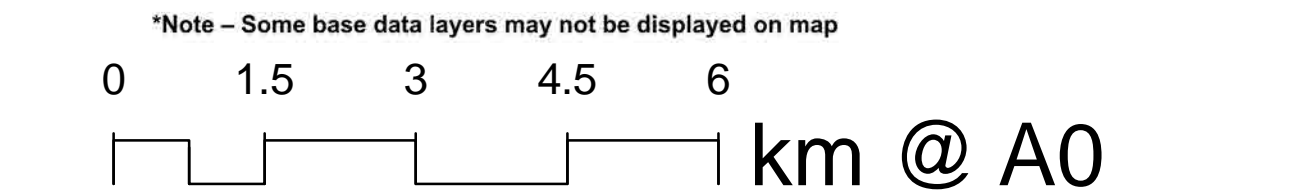
**Note on LMZ.** All areas not specifically mapped as an APZ, SFAZ or FEZ are considered as LMZ for this risk management plan. For areas identified by an LMZ polygon on the map, please refer to the BFRMP document for the specific land management objectives.

Zone	Purpose	Suppression Objective(s)	Zone characteristics
<b>Asset Protection Zone</b>	To protect human life, property and highly valued public assets and values.	To enable the safe use of <b>Direct Attack</b> suppression strategies within the zone. To minimise bush fire impacts on undervalued assets.	As per RFS document, Standards for Asset Protection Zones.
<b>Strategic Fire Advantage Zone</b>	To provide strategic areas of fire protection advantage which will reduce the spread and intensity of bush fires, and reduce the potential for spot fire development. To aid containment of wildfires to existing management boundaries.	To improve the likelihood and safe use of: <b>Parallel Attack</b> suppression strategies within the zone, and/or <b>Indirect Attack</b> (back burning) in high to very high fire weather conditions within the zone.  To reduce the likelihood of: Crown fire development within the zone, and/or Spot fire ignition potential from the zone.	Zone width related to suppression objectives and dependent upon: - Topography - Aspect - Spotting propensity - Location of adjacent firebreaks - Mosaic pattern of treatment - Assess Overall Fuel Hazard (OFH) once vegetation communities reach minimum fire thresholds within this plan. Management practices should aim to achieve mosaic fuel reduction patterns so that the majority of the SFAZ has an OFH of less than high.
<b>Land Management Zone</b>	To meet relevant land management objectives in areas where APZs or SFAZs are not appropriate.	To reduce the likelihood of spread of fires. To undertake mosaic burning	As appropriate to achieve land management e.g. heritage and/or fire protection e.g. broad scale mosaic burning objectives.
<b>Fire Exclusion Zone</b>	To exclude bush fires.	N/A	Variable dependent on size of fire sensitive area requiring protection.

- Assets**
- Human - Residential
  - Human - Other
  - Special Fire Protection
  - Economic - Agricultural
  - Economic - Commercial
  - Economic - Infrastructure
  - Economic - Tourism and Recreational
  - Economic - Mines
  - Commercial Forests
  - Drinking Water Catchments
  - Environmental - Locally Important
  - Environmental - Vulnerable (Special)
  - Environmental - Endangered (Special)
  - Cultural - Aboriginal Heritage
  - Cultural - Other
  - Cultural - Non Indigenous

- Bush Fire Management Zones**
- Fire Exclusion Zone (FEZ)
  - Asset Protection Zone (APZ)
  - Land Management Zone (LMZ)
  - Strategic Fire Advantage Zone (SFAZ)

- Base Data Layers**
- Major Roads Sealed
  - Major Roads Unsealed
  - Secondary Road Sealed
  - Secondary Road Unsealed
  - Local Road Sealed
  - Local Road Unsealed
  - Local Road Unspecified
  - 4WD Track Unspecified
  - Path
  - Heavy Rail
  - Light Rail
  - Heavy Rail Siding
  - Drainage Potential
  - Drainage Non Potential
  - Hydro-Line Potential
  - Hydro-Line Non Potential
  - Contour (100m)
  - Contour (50m)
  - Map Display Area
  - Local Government Area
  - Crown Land
  - State Forests
  - National Park



**Disclaimer**  
The Hawkesbury BFMC makes every effort to ensure the quality of the information available on this map. Before relying on the information on this map, users should carefully evaluate its accuracy, completeness and relevance for their purposes, and should obtain any appropriate professional advice relevant to their particular circumstances.

The Hawkesbury BFMC can not guarantee and assumes no legal liability or responsibility for the accuracy, currency or completeness of the information. Copyright: Hawkesbury BFMC 2017.



# Hawkesbury BFMC Bush Fire Risk Management Plan 2017

## Macdonald - Map Display Area Map 2 of 7

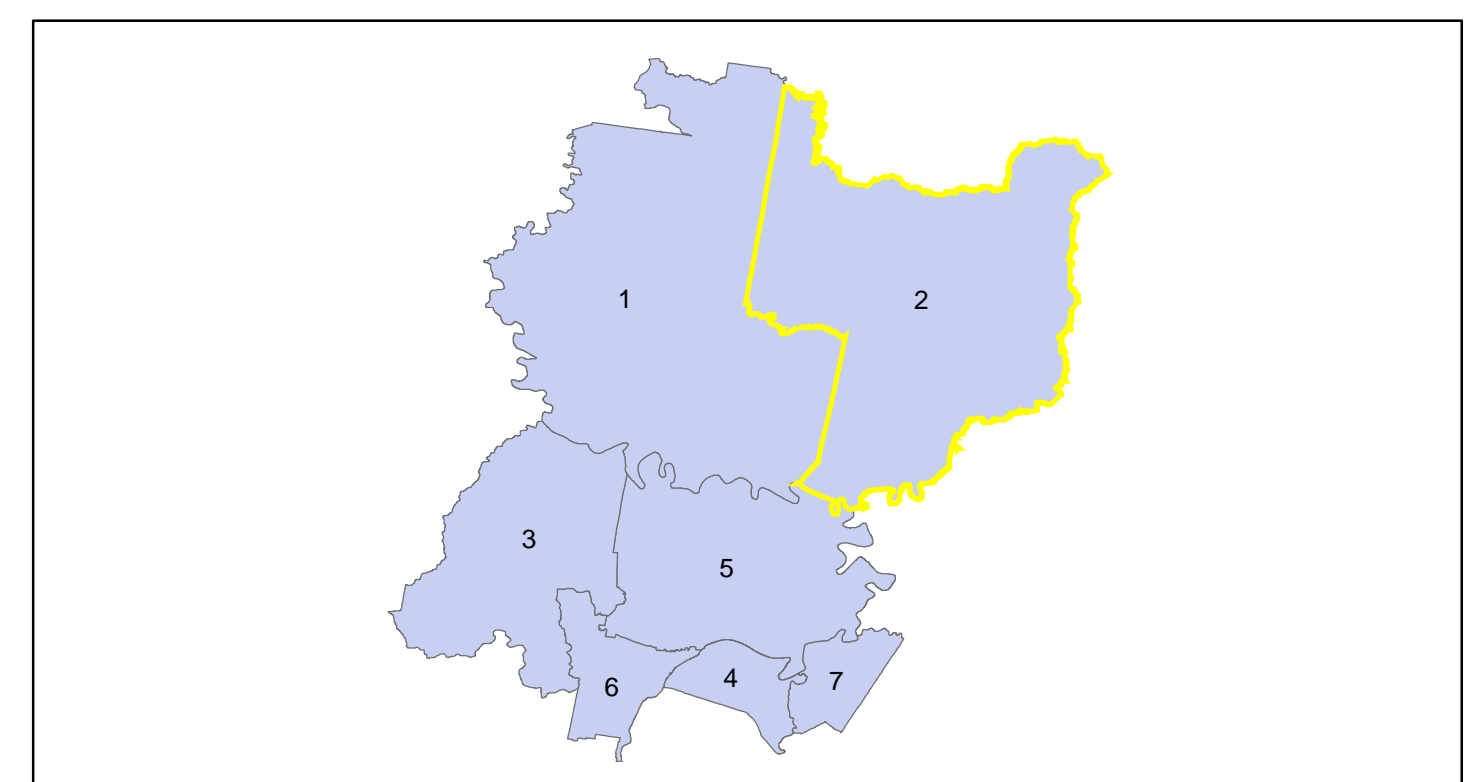
This Bush Fire Risk Management Plan (BFRMP) has been prepared by the Hawkesbury Bush Fire Management Committee (BFMC) pursuant to section 52 of the *Rural Fires Act 1997*.

The aim of this BFRMP is to reduce the adverse impact of bush fires on life, property and the environment.

The objectives of this BFRMP are to:

- reduce the number of human-induced bush fire ignitions that cause damage to life, property or the environment;
- manage fuel to reduce the spread and intensity of bush fires while minimising environmental/ecological impacts;
- reduce the community's vulnerability to bush fires by improving its preparedness; and
- effectively contain fires with a potential to cause damage to life, property and the environment.

This map forms part of the BFRMP for the Hawkesbury BFMC, covering the local government area(s) of Hawkesbury. It should be viewed in conjunction with the accompanying BFRMP document which provides further details on the BFMC area, the assets assessed and the risk assessment process used.



**Review**  
Under the *Rural Fires Act 1997* this plan must be reviewed and updated within each successive five year period following the constitution of the BFMC. The Hawkesbury BFMC will also review this plan as necessary. This may be triggered by a range of circumstances, including but not limited to:

- changes to the BFMC area, organisational responsibilities or legislation;
- changes to the bush fire risk in the area; or
- following a major fire event.

**Assets**  
This BFRMP identifies the assets that are considered by the Hawkesbury BFMC and community to be at risk from bush fires, assesses the bush fire risk to each asset and assigns treatments designed to mitigate the risk. Assets in the BFMC area identified as requiring treatments are listed in the assets table. Other assets within the BFMC area that were assessed as not requiring treatments within the life of this plan are listed in the appendix to the BFRMP document. The Map Ref number "NA" denotes non-spatial assets.

**Treatments**  
Specific treatments assigned to assets in the Hawkesbury area are listed in the treatments table and linked to the assets which they are designed to protect. Standard BFMC wide treatments (i.e. not linked to a specific asset) which occur on an ongoing basis within the BFMC area are:

- reviewing the bush fire prone land map;
- ensuring developments in the bush fire prone land comply with Planning for Bush Fire Protection;
- using the Local Environment Plans (LEPs) to control development in areas with a bush fire risk;
- varying the standard bush fire danger period as required;
- requiring permits during bush fire danger periods
- prosecution of arsonists/offenders
- investigation of bush fire cause;
- normal fire suppression activities;
- assessing and managing compliance with strategic fire-fighting resource allocation management systems;
- preparation of a S2 Operations Coordination Plan;
- fire management plans or plans of management; and
- bush fire hazard complaints.

Note on LMZ. All areas not specifically mapped as an APZ, SFAZ or FEZ are considered as LMZ for this risk management plan. For areas identified by an LMZ polygon on the map, please refer to the BFRMP document for the specific land management objectives.

Zone	Purpose	Suppression Objective(s)	Zone characteristics
<b>Asset Protection Zone</b>	To protect human life, property and highly valued public assets and values.	To enable the safe use of <b>Direct Attack</b> suppression strategies within the zone. To minimise bush fire impacts on undefended assets.	As per RFS document, Standards for Asset Protection Zones.
<b>Strategic Fire Advantage Zone</b>	To provide strategic areas of fire protection advantage which will reduce the spread and intensity of bush fires, and reduce the potential for spot fire development. To aid containment of wildfires to existing land management boundaries.	To improve the likelihood and safe use of <b>Parallel Attack</b> suppression strategies within the zone, and/or <b>Indirect Attack</b> (back burning) in high to very high fire weather conditions within the zone. To reduce the likelihood of Crown fire development within the zone, and/or Spot fire ignition potential from the zone.	Zone width related to suppression objectives and dependent upon: - Topography - Aspect - Spotting propensity - Location of adjacent firebreaks - Mosaic pattern of treatment Assess Overall Fuel Hazard (OFH) once vegetation communities reach minimum fire thresholds within this plan. Management practices should aim to achieve mosaic fuel reduction patterns so that the majority of the SFAZ has an OFH of less than high.
<b>Land Management Zone</b>	To meet relevant land management objectives in areas where AFZs or SFAZs are not appropriate.	To reduce the likelihood of spread of fires. To undertake mosaic burning	As appropriate to achieve land management e.g. heritage and/or fire protection e.g. broad scale mosaic burning objectives.
<b>Fire Exclusion Zone</b>	To exclude bush fires.	N/A	Variable dependent on size of fire sensitive area requiring protection.

Assets	Bush Fire Management Zones
Human - Residential	Fire Exclusion Zone (FEZ)
Human - Other	Asset Protection Zone (APZ)
Special Fire Protection	Land Management Zone (LMZ)
Economic - Agricultural	Strategic Fire Advantage Zone (SFAZ)
Economic - Commercial	
Economic - Infrastructure	
Economic - Tourism and Recreational	
Economic - Mines	
Commercial Forests	
Drinking Water Catchments	
Environmental - Locally Important	
Environmental - Vulnerable	
Environmental - Endangered (Special)	
Cultural - Aboriginal Heritage	
Cultural - Other	
Cultural - Non Indigenous	

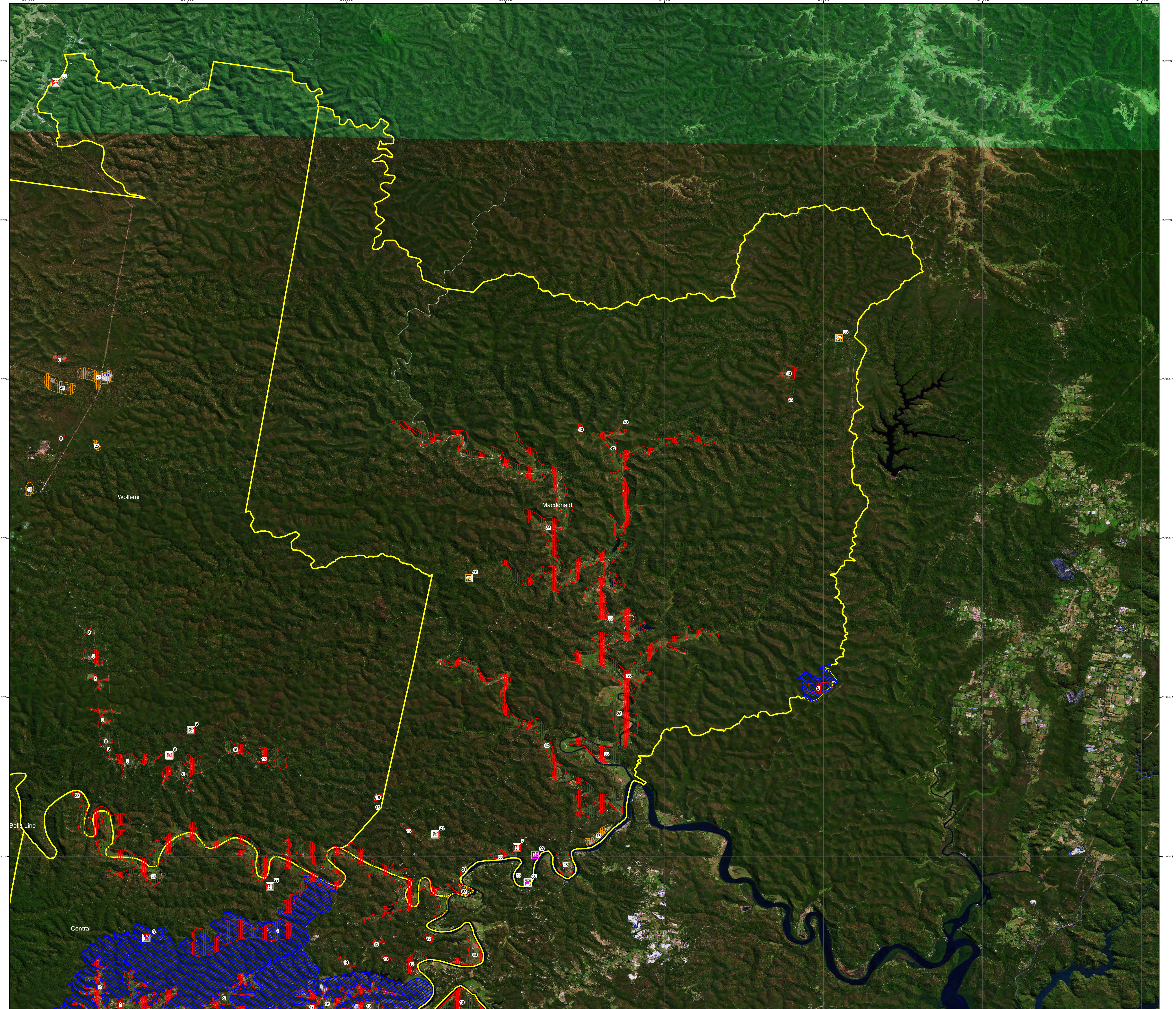
Base Data Layers
Major Roads Sealed
Major Roads Unsealed
Secondary Road Sealed
Secondary Road Unsealed
Local Road Sealed
Local Road Unsealed
Local Road Unspecified
4WD Track Unspecified
Path
Heavy Rail
Light Rail
Heavy Rail Siding
Drainage Potential
Drainage Non Potential
Hydro-Line Potential
Hydro-Line Non Potential
Contour (100m)
Contour (50m)
Map Display Area
Local Government Area
Crown Land
State Forests
National Park



**Disclaimer**  
The Hawkesbury BFMC makes every effort to ensure the quality of the information available on this map. Before relying on the information on this map, users should carefully evaluate its accuracy, completeness and relevance for their purposes, and should obtain any appropriate professional advice relevant to their particular circumstances.

The Hawkesbury BFMC can not guarantee and assumes no legal liability or responsibility for the accuracy, currency or completeness of the information. Copyright: Hawkesbury BFMC 2017.

Authorized by ..... of Hawkesbury BFMC.  
Date created: Thursday, 9 November 2017  
BFRR version 2.1.26.0 +S





# Hawkesbury BFMC Bush Fire Risk Management Plan 2017

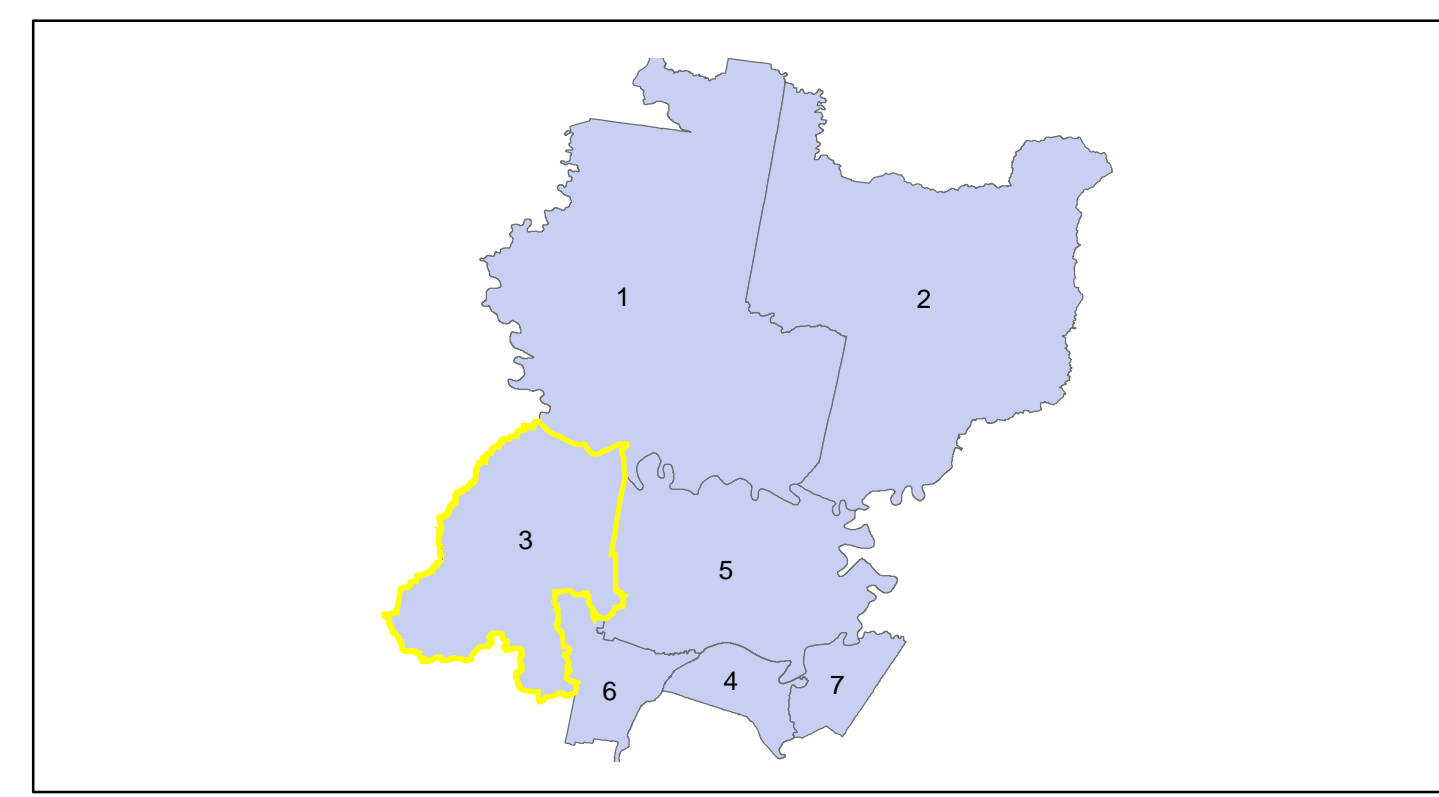
## Bells Line - Map Display Area Map 3 of 7

This Bush Fire Risk Management Plan (BFRMP) has been prepared by the Hawkesbury Bush Fire Management Committee (BFMC) pursuant to section 52 of the *Rural Fires Act 1997*.

The aim of this BFRMP is to reduce the adverse impact of bush fires on life, property and the environment.

- The objectives of this BFRMP are to:
- reduce the number of human-induced bush fire ignitions that cause damage to life, property or the environment;
  - manage fuel to reduce the spread and intensity of bush fires while minimising environmental/ecological impacts;
  - reduce the community's vulnerability to bush fires by improving its preparedness; and
  - effectively contain fires with a potential to cause damage to life, property and the environment.

This map forms part of the BFRMP for the Hawkesbury BFMC, covering the local government area(s) of Hawkesbury. It should be viewed in conjunction with the accompanying BFRMP document which provides further details on the BFMC area, the assets assessed and the risk assessment process used.



**Review**  
Under the *Rural Fires Act 1997* this plan must be reviewed and updated within each successive five year period following the constitution of the BFMC. The Hawkesbury BFMC will also review this plan as necessary. This may be triggered by a range of circumstances, including but not limited to:

- changes to the BFMC area, organisational responsibilities or legislation;
- changes to the bush fire risk in the area; or
- following a major fire event.

**Assets**  
This BFRMP identifies the assets that are considered by the Hawkesbury BFMC and community to be at risk from bush fires, assesses the bush fire risk to each asset and assigns treatments designed to mitigate the risk. Assets in the BFMC area identified as requiring treatments are listed in the assets table. Other assets within the BFMC area that were assessed as not requiring treatments within the life of this plan are listed in the appendix to the BFRMP document. The Map Ref number "NA" denotes non-spatial assets.

**Treatments**  
Specific treatments assigned to assets in the Hawkesbury area are listed in the treatments table and linked to the assets which they are designed to protect. Standard BFMC wide treatments (i.e. not linked to a specific asset) which occur on an ongoing basis within the BFMC area are:

- reviewing the bush fire prone land map;
- ensuring developments in the bush fire prone land comply with Planning for Bush Fire Protection;
- using the Local Environment Plans (LEPs) to control development in areas with a bush fire risk;
- varying the standard bush fire danger period as required;
- requiring permits during bush fire danger periods
- prosecution of arsonists/offenders
- investigation of bush fire cause;
- normal fire suppression activities;
- assessing and managing compliance with strategic fire-fighting resource allocation management systems;
- preparation of a S2 Operations Coordination Plan;
- fire management plans or plans of management; and
- bush fire hazard complaints.

Note on LMZ. All areas not specifically mapped as an APZ, SFAZ or FEZ are considered as LMZ for this risk management plan. For areas identified by an LMZ polygon on the map, please refer to the BFRMP document for the specific land management objectives.

Zone	Purpose	Suppression Objective(s)	Zone characteristics
<b>Asset Protection Zone</b>	To protect human life, property and highly valued public assets and values.	To enable the safe use of <b>Direct Attack</b> suppression strategies within the zone. To minimise bush fire impacts on undeveloped assets.	As per RFS document: Standards for Asset Protection Zones.
<b>Strategic Fire Advantage Zone</b>	To provide strategic areas of fire protection advantage which will reduce the spread and intensity of bush fires, and reduce the potential for spot fire development. To aid containment of wildfires to existing management boundaries.	To improve the likelihood and safe use of: <b>Parallel Attack</b> suppression strategies within the zone. <b>Indirect Attack</b> (back burning) in high to very high fire weather conditions within the zone. To reduce the likelihood of: Crown fire development within the zone, and/or Spot fire ignition potential from the zone.	Zone width related to suppression objectives and dependent upon: - Topography - Island - Spotting propensity - Location of adjacent firebreaks - Mosaic pattern of treatment Assess Overall Fuel Hazard (OFH) once vegetation communities reach minimum fire thresholds within this plan. Management practices should aim to achieve mosaic fuel reduction patterns so that the majority of the SFAZ has an OFH of less than high.
<b>Land Management Zone</b>	To meet relevant land management objectives in areas where APZs or SFAZs are not appropriate.	To reduce the likelihood of spread of fires. To undertake mosaic burning	As appropriate to achieve land management e.g. heritage and/or fire protection e.g. broad scale mosaic burning objectives.
<b>Fire Exclusion Zone</b>	To exclude bush fires.	N/A	Variable dependent on size of fire sensitive area requiring protection.

- Assets**
- Human - Residential
  - Human - Other
  - Special Fire Protection
  - Economic - Agricultural
  - Economic - Commercial
  - Economic - Infrastructure
  - Economic - Tourism and Recreational
  - Economic - Mines
  - Commercial Forests
  - Drinking Water Catchments
  - Environmental - Locally Important
  - Environmental - Vulnerable (Special)
  - Environmental - Endangered (Special)
  - Cultural - Aboriginal Heritage
  - Cultural - Other
  - Cultural - Non Indigenous

- Bush Fire Management Zones**
- Fire Exclusion Zone (FEZ)
  - Asset Protection Zone (APZ)
  - Land Management Zone (LMZ)
  - Strategic Fire Advantage Zone (SFAZ)

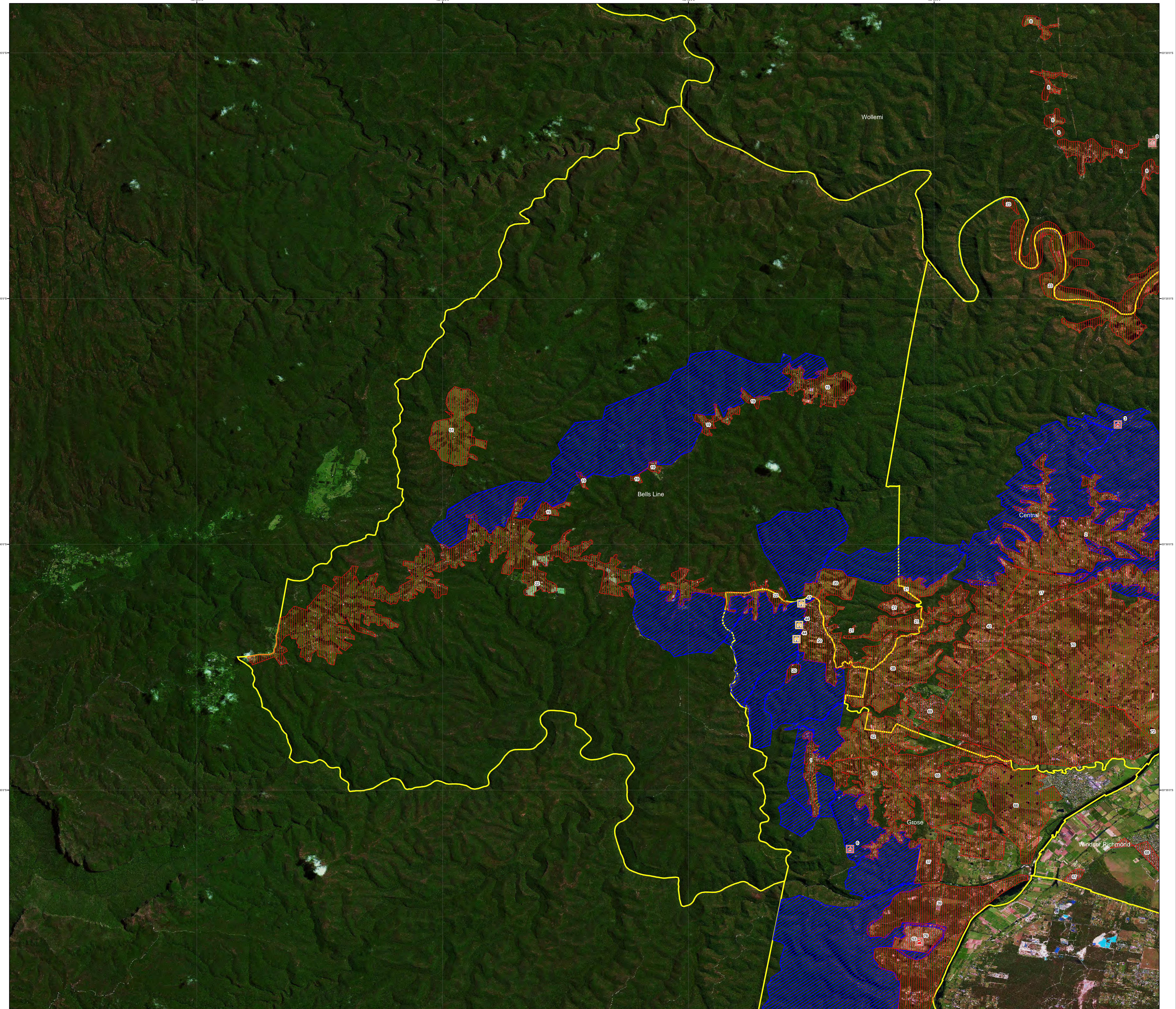
- Base Data Layers**
- Major Roads Sealed
  - Major Roads Unsealed
  - Secondary Road Sealed
  - Secondary Road Unsealed
  - Local Road Sealed
  - Local Road Unsealed
  - Local Road Unspecified
  - 4WD Track Unspecified
  - Path
  - Heavy Rail
  - Light Rail
  - Heavy Rail Siding
  - Drainage Potential
  - Drainage Non Potential
  - Hydro-Line Potential
  - Hydro-Line Non Potential
  - Contour (100m)
  - Contour (50m)
  - Map Display Area
  - Local Government Area
  - Crown Land
  - State Forests
  - National Park

\*Note - Some base data layers may not be displayed on map

**Disclaimer**  
The Hawkesbury BFMC makes every effort to ensure the quality of the information available on this map. Before relying on the information on this map, users should carefully evaluate its accuracy, completeness and relevance for their purposes, and should obtain any appropriate professional advice relevant to their particular circumstances.

The Hawkesbury BFMC can not guarantee and assumes no legal liability or responsibility for the accuracy, currency or completeness of the information. Copyright: Hawkesbury BFMC 2017.

Authorized by ..... of Hawkesbury BFMC.  
Date created: Thursday, 9 November 2017  
BFRR version 2.1.26.0 +S





# Hawkesbury BFMC Bush Fire Risk Management Plan 2017

## Windsor Richmond - Map Display Area Map 4 of 7

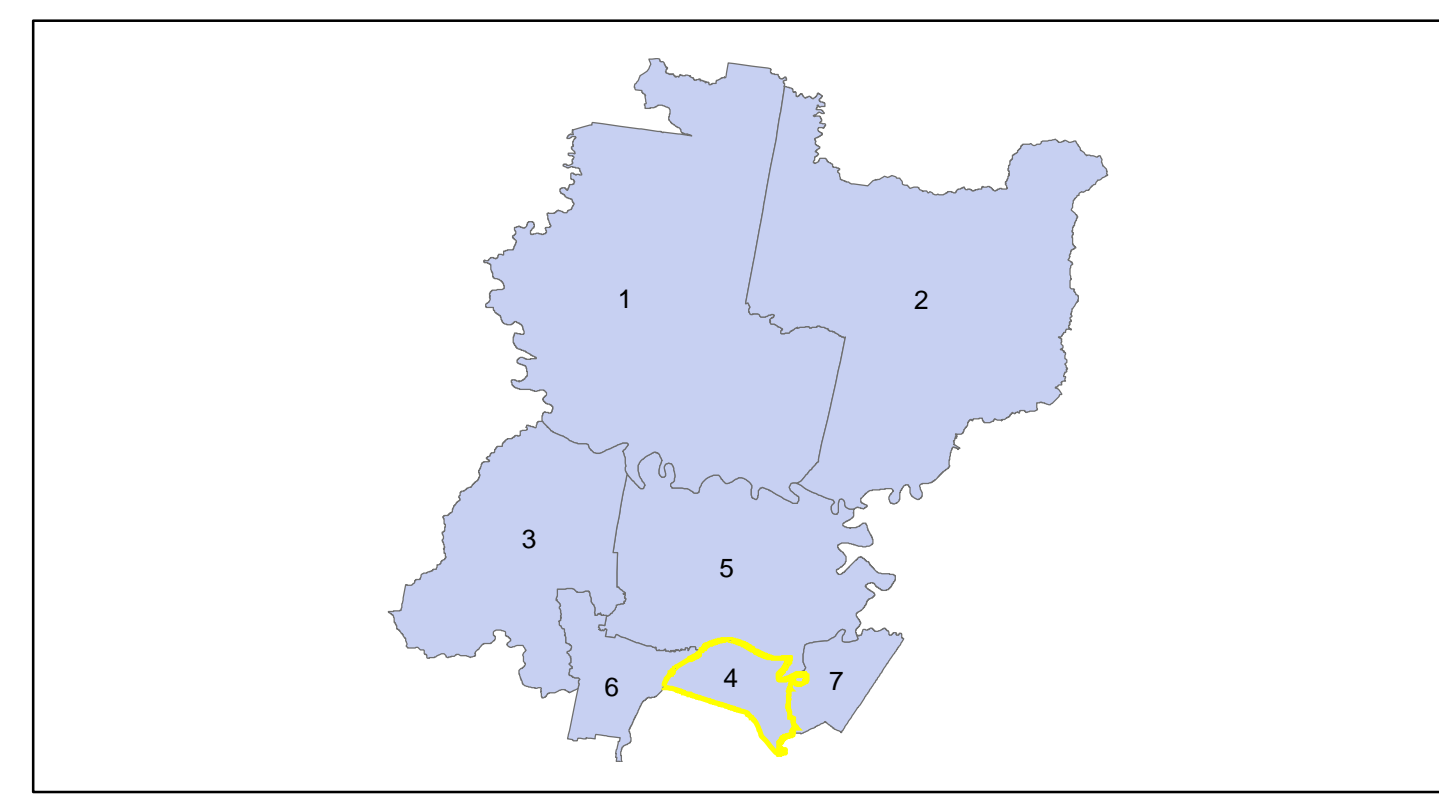
This Bush Fire Risk Management Plan (BFRMP) has been prepared by the Hawkesbury Bush Fire Management Committee (BFMC) pursuant to section 52 of the *Rural Fires Act 1997*.

The aim of this BFRMP is to reduce the adverse impact of bush fires on life, property and the environment.

The objectives of this BFRMP are to:

- reduce the number of human-induced bush fire ignitions that cause damage to life, property or the environment;
- manage fuel to reduce the spread and intensity of bush fires while minimising environmental/ecological impacts;
- reduce the community's vulnerability to bush fires by improving its preparedness; and
- effectively contain fires with a potential to cause damage to life, property and the environment.

This map forms part of the BFRMP for the Hawkesbury BFMC, covering the local government area(s) of Hawkesbury. It should be viewed in conjunction with the accompanying BFRMP document which provides further details on the BFMC area, the assets assessed and the risk assessment process used.



**Review**  
Under the *Rural Fires Act 1997* this plan must be reviewed and updated within each successive five year period following the constitution of the BFMC. The Hawkesbury BFMC will also review this plan as necessary. This may be triggered by a range of circumstances, including but not limited to:

- changes to the BFMC area, organisational responsibilities or legislation;
- changes to the bush fire risk in the area; or
- following a major fire event.

**Assets**  
This BFRMP identifies the assets that are considered by the Hawkesbury BFMC and community to be at risk from bush fires, assesses the bush fire risk to each asset and assigns treatments designed to mitigate the risk. Assets in the BFMC area identified as requiring treatments are listed in the assets table. Other assets within the BFMC area that were assessed as not requiring treatments within the life of this plan are listed in the appendix to the BFRMP document. The Map Ref number "NA" denotes non-spatial assets.

**Treatments**  
Specific treatments assigned to assets in the Hawkesbury area are listed in the treatments table and linked to the assets which they are designed to protect. Standard BFMC wide treatments (i.e. not linked to a specific asset) which occur on an ongoing basis within the BFMC area are:

- reviewing the bush fire prone land map;
- ensuring developments in the bush fire prone land comply with Planning for Bush Fire Protection;
- using the Local Environment Plans (LEPs) to control development in areas with a bush fire risk;
- having the standard bush fire danger period as required;
- requiring permits during bush fire danger periods
- prosecution of arsonists/offenders
- investigation of bush fire cause;
- normal fire suppression activities;
- assessing and managing compliance with strategic fire-fighting resource allocation management systems;
- preparation of a S2 Operations Coordination Plan;
- fire management plans or plans of management; and
- bush fire hazard complaints.

**Note on LMAZ.** All areas not specifically mapped as an APZ, SFAZ or FEZ are considered as LMAZ for this risk management plan. For areas identified by an LMAZ polygon on the map, please refer to the BFRMP document for the specific land management objectives.

Zone	Purpose	Suppression Objective(s)	Zone characteristics
<b>Asset Protection Zone</b>	To protect human life, property and highly valued public assets and values.	To enable the safe use of <b>Direct Attack</b> suppression strategies within the zone. To minimise bush fire impacts on undervalued assets.	As per RFS document: Standards for Asset Protection Zones.
<b>Strategic Fire Advantage Zone</b>	To provide strategic areas of fire protection advantage which will reduce the spread and intensity of bush fires, and reduce the potential for spot fire development. To aid containment of wildfires to existing land management boundaries.	To improve the likelihood and safe use of <b>Parallel Attack</b> suppression strategies within the zone, and/or <b>Indirect Attack</b> (back burning) in high to very high fire weather conditions within the zone. To reduce the likelihood of: <b>Green fire</b> development within the zone, and/or <b>Spot fire</b> ignition potential from the zone.	Zone width related to suppression objectives and dependent upon: - Topography - Aspect - Spotting propensity - Location of adjacent firebreaks - Mosaic pattern of treatment Assess Overall Fuel Hazard (OFH) once vegetation communities reach minimum fire thresholds within this plan. Management practices should aim to achieve mosaic fuel reduction patterns so that the majority of the SFAZ has an OFH of less than high.
<b>Land Management Zone</b>	To meet relevant land management objectives in areas where APZs or SFAZs are not appropriate.	As per the land management and fire protection objectives of the responsible land management agency. To reduce the likelihood of spread of fires. To undertake mosaic burning	As appropriate to achieve land management e.g. heritage and/or fire protection e.g. broad scale mosaic burning objectives.
<b>Fire Exclusion Zone</b>	To exclude bush fires.	N/A	Variable dependent on size of fire sensitive area requiring protection.

Assets	
	Human - Residential
	Human - Other
	Social Fire Protection
	Economic - Agricultural
	Economic - Commercial
	Economic - Infrastructure
	Economic - Tourism and Recreational
	Economic - Mines
	Commercial Forests
	Drinking Water Catchments
	Environmental - Locally Important
	Environmental - Vulnerable Fire Weather Conditions
	Environmental - Endangered (Species)
	Cultural - Aboriginal Heritage
	Cultural - Other
	Cultural - Non Indigenous

Bush Fire Management Zones	
	Fire Exclusion Zone (FEZ)
	Asset Protection Zone (APZ)
	Land Management Zone (LMAZ)
	Strategic Fire Advantage Zone (SFAZ)

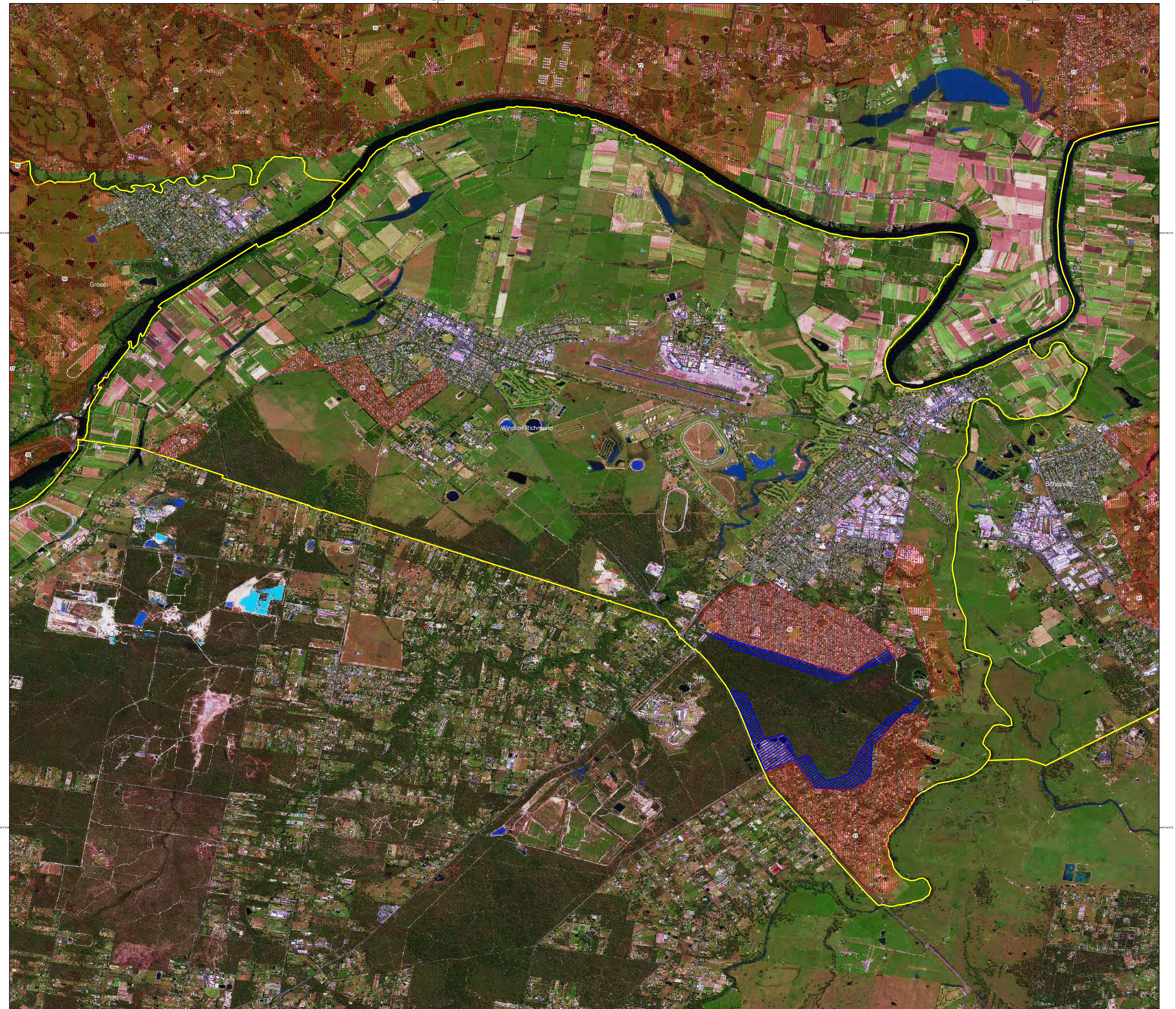
Base Data Layers	
	Major Roads Sealed
	Major Roads Unsealed
	Secondary Road Sealed
	Secondary Road Unsealed
	Local Road Sealed
	Local Road Unsealed
	Local Road Unspecified
	4WD Track Unspecified
	Path
	Heavy Rail
	Light Rail
	Heavy Rail Siding
	Drainage Potential
	Drainage Non Potential
	Hydro-Line Potential
	Hydro-Line Non Potential
	Contour (100m)
	Contour (50m)
	Map Display Area
	Local Government Area
	Crown Land
	State Forests
	National Park

\*Note - Some base data layers may not be displayed on map

**Disclaimer**  
The Hawkesbury BFMC makes every effort to ensure the quality of the information available on this map. Before relying on the information on this map, users should carefully evaluate its accuracy, completeness and relevance for their purposes, and should obtain any appropriate professional advice relevant to their particular circumstances.

The Hawkesbury BFMC can not guarantee and assumes no legal liability or responsibility for the accuracy, currency or completeness of the information. Copyright: Hawkesbury BFMC 2017.

Authorized by \_\_\_\_\_ of Hawkesbury BFMC.  
Date created: Thursday, 9 November 2017  
BFRR version 2.1.26.0 +S





# Hawkesbury BFMC Bush Fire Risk Management Plan 2017

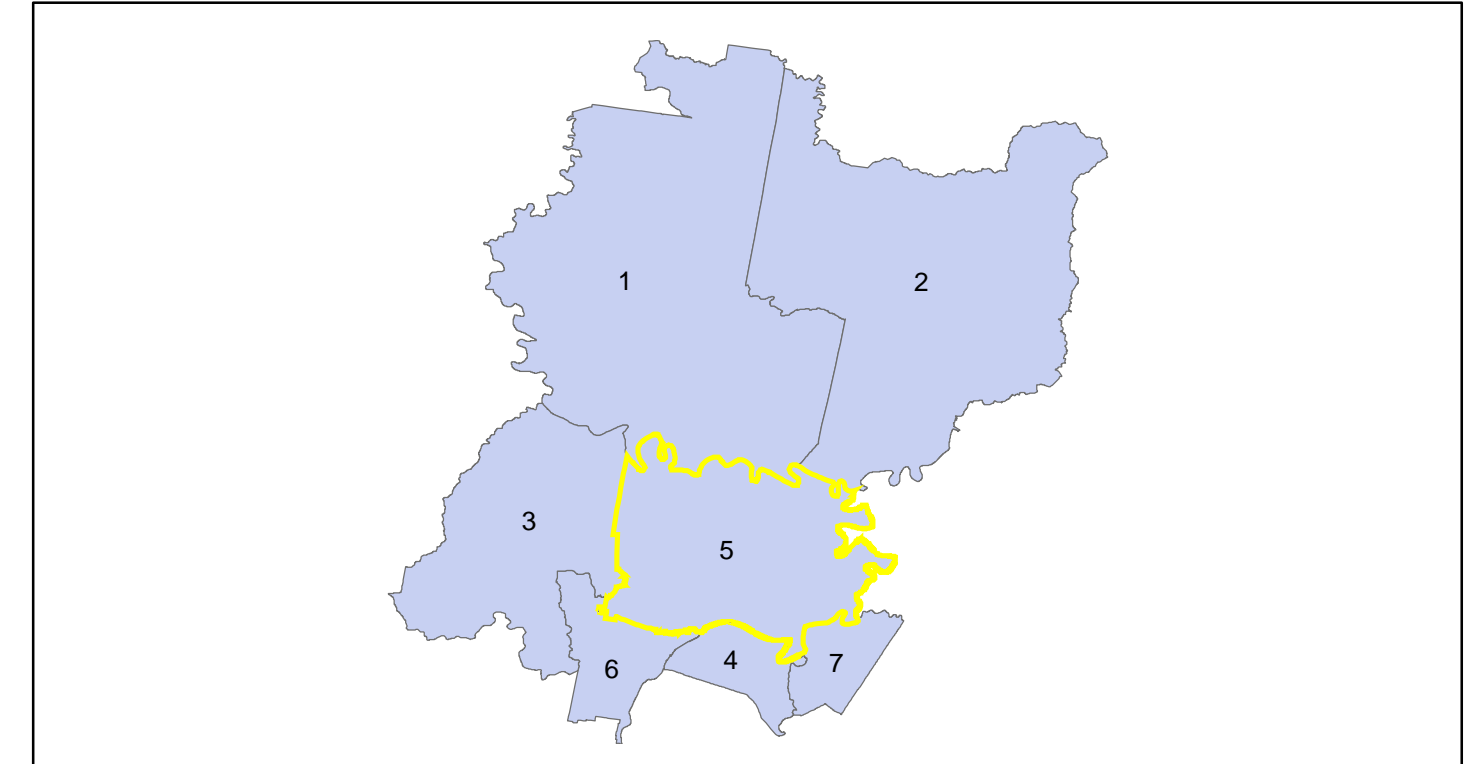
## Central - Map Display Area Map 5 of 7

This Bush Fire Risk Management Plan (BFRMP) has been prepared by the Hawkesbury Bush Fire Management Committee (BFMC) pursuant to section 52 of the *Rural Fires Act 1997*.

The aim of this BFRMP is to reduce the adverse impact of bush fires on life, property and the environment.

- The objectives of this BFRMP are to:
- reduce the number of human-induced bush fire ignitions that cause damage to life, property or the environment;
  - manage fuel to reduce the spread and intensity of bush fires while minimising environmental/ecological impacts;
  - reduce the community's vulnerability to bush fires by improving its preparedness; and
  - effectively contain fires with a potential to cause damage to life, property and the environment.

This map forms part of the BFRMP for the Hawkesbury BFMC, covering the local government area(s) of Hawkesbury. It should be viewed in conjunction with the accompanying BFRMP document which provides further details on the BFMC area, the assets assessed and the risk assessment process used.



**Review**  
Under the *Rural Fires Act 1997* this plan must be reviewed and updated within each successive five year period following the constitution of the BFMC. The Hawkesbury BFMC will also review this plan as necessary. This may be triggered by a range of circumstances, including but not limited to:

- changes to the BFMC area, organisational responsibilities or legislation;
- changes to the bush fire risk in the area; or
- following a major fire event.

**Assets**  
This BFRMP identifies the assets that are considered by the Hawkesbury BFMC and community to be at risk from bush fires, assesses the bush fire risk to each asset and assigns treatments designed to mitigate the risk. Assets in the BFMC area identified as requiring treatments are listed in the assets table. Other assets within the BFMC area that were assessed as not requiring treatments within the life of this plan are listed in the appendix to the BFRMP document. The Map Ref number "NA" denotes non-spatial assets.

- Treatments**  
Specific treatments assigned to assets in the Hawkesbury area are listed in the treatments table and linked to the assets which they are designed to protect. Standard BFMC wide treatments (i.e. not linked to a specific asset) which occur on an ongoing basis within the BFMC area are:
- reviewing the bush fire prone land map;
  - ensuring developments in the bush fire prone land comply with Planning for Bush Fire Protection;
  - using the Local Environment Plans (LEPs) to control development in areas with a bush fire risk;
  - varying the standard bush fire danger period as required;
  - requiring permits during bush fire danger periods;
  - prosecution of arsonists/offenders;
  - investigation of bush fire cause;
  - normal fire suppression activities;
  - assessing and managing compliance with strategic fire-fighting resource allocation management systems;
  - preparation of a S2 Operations Coordination Plan;
  - fire management plans or plans of management; and
  - bush fire hazard complaints.

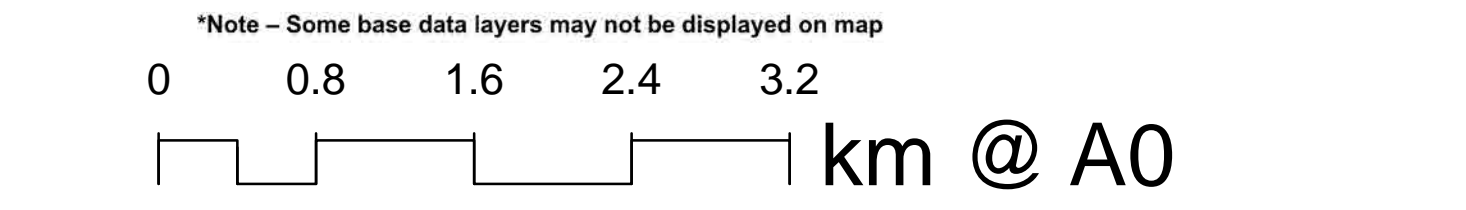
Note on LMZ. All areas not specifically mapped as an APZ, SFAZ or FEZ are considered as LMZ for this risk management plan. For areas identified by an LMZ polygon on the map, please refer to the BFRMP document for the specific land management objectives.

Zone	Purpose	Suppression Objective(s)	Zone characteristics
<b>Asset Protection Zone</b>	To protect human life, property and highly valued public assets and values.	To enable the safe use of <b>Direct Attack</b> suppression strategies within the zone. To minimise bush fire impacts on undervalued assets.	As per RFS document, Standards for Asset Protection Zones.
<b>Strategic Fire Advantage Zone</b>	To provide strategic areas of fire protection advantage which will reduce the spread and intensity of bush fires, and reduce the potential for spot fire development. To assist containment of wildfires to existing management boundaries.	To improve the likelihood and safe use of <b>Parallel Attack</b> suppression strategies within the zone. <b>Indirect Attack</b> (back burning) in high to very high fire weather conditions within the zone. To reduce the likelihood of Crown fire development within the zone, and/or Spot fire ignition potential from the zone.	Zone width related to suppression objectives and dependent upon: - Topography - Location of adjacent firebreaks - Spotting propensity - Mosaic pattern of treatment Assess Overall Fuel Hazard (OFH) once vegetation communities reach minimum fire thresholds within this zone. Management practices should aim to achieve mosaic fuel reduction patterns so that the majority of the SFAZ has an OFH of less than high.
<b>Land Management Zone</b>	To meet relevant land management objectives in areas where SFAZs or APZs are not appropriate.	To reduce the likelihood of spread of fires. To undertake mosaic burning	As appropriate to achieve land management objectives e.g. heritage and/or fire protection e.g. broad scale mosaic burning objectives.
<b>Fire Exclusion Zone</b>	To exclude bush fires.	N/A	Variable dependent on size of fire sensitive area requiring protection.

- Assets**
- Human - Residential
  - Human - Other
  - Special Fire Protection
  - Economic - Agricultural
  - Economic - Commercial
  - Economic - Infrastructure
  - Economic - Tourism and Recreational
  - Economic - Mines
  - Commercial Forests
  - Drinking Water Catchments
  - Environmental - Locally Important
  - Environmental - Vulnerable
  - Environmental - Endangered (Species)
  - Cultural - Aboriginal Heritage
  - Cultural - Other
  - Cultural - Non Indigenous

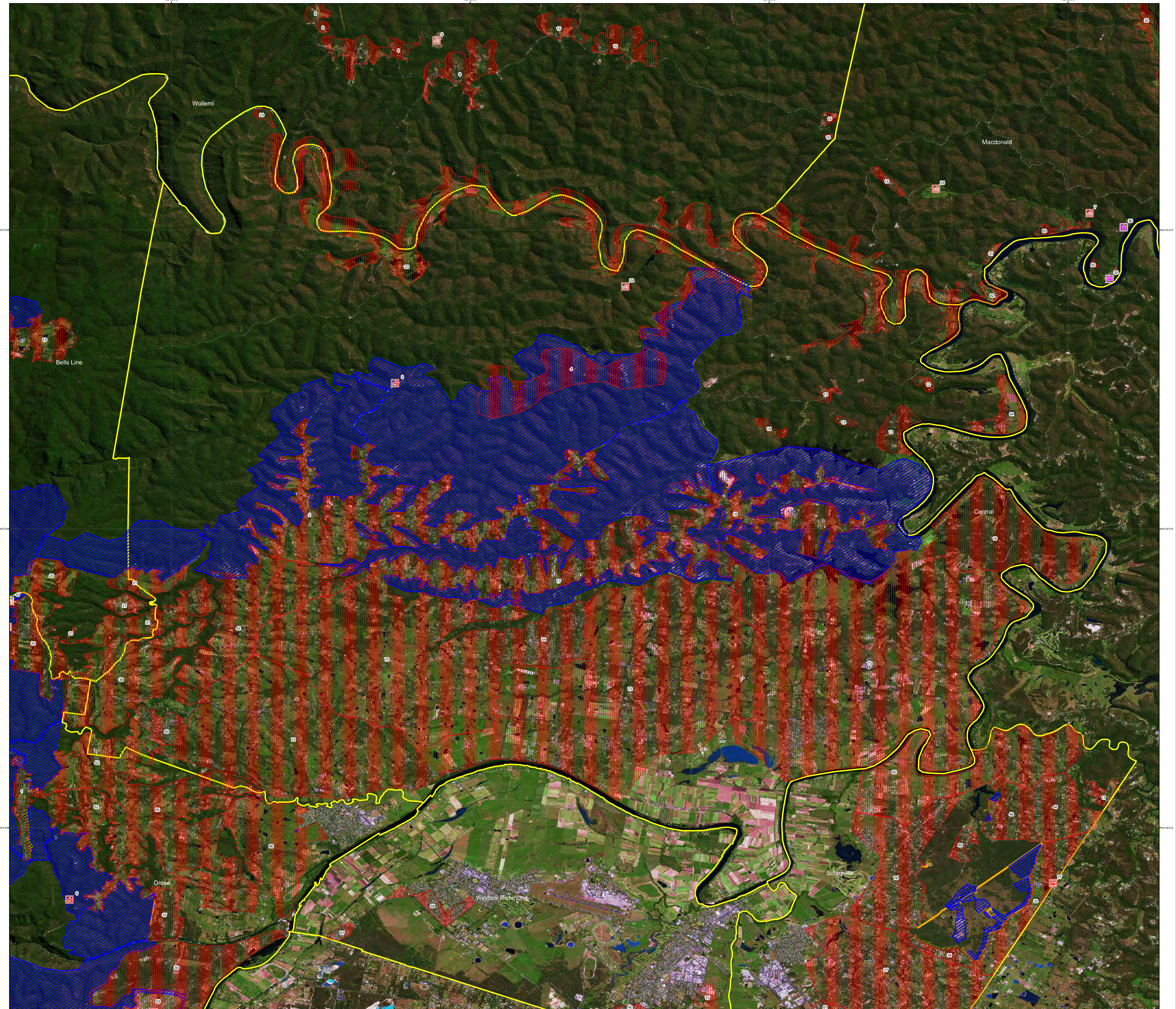
- Bush Fire Management Zones**
- Fire Exclusion Zone (FEZ)
  - Asset Protection Zone (APZ)
  - Land Management Zone (LMZ)
  - Strategic Fire Advantage Zone (SFAZ)

- Base Data Layers**
- Major Roads Sealed
  - Major Roads Unsealed
  - Secondary Road Sealed
  - Secondary Road Unsealed
  - Local Road Sealed
  - Local Road Unsealed
  - Local Road Unspecified
  - 4WD Track Unspecified
  - Path
  - Heavy Rail
  - Light Rail
  - Heavy Rail Siding
  - Drainage Present
  - Drainage Non Present
  - Hydro-Line Present
  - Hydro-Line Non Present
  - Contour (100m)
  - Contour (50m)
  - Map Display Area
  - Local Government Area
  - Crown Land
  - State Forests
  - National Park



**Disclaimer**  
The Hawkesbury BFMC makes every effort to ensure the quality of the information available on this map. Before relying on the information on this map, users should carefully evaluate its accuracy, completeness and relevance for their purposes, and should obtain any appropriate professional advice relevant to their particular circumstances.

The Hawkesbury BFMC can not guarantee and assumes no legal liability or responsibility for the accuracy, currency or completeness of the information. Copyright: Hawkesbury BFMC 2017.





# Hawkesbury BFMC Bush Fire Risk Management Plan 2017

## Grose - Map Display Area Map 6 of 7

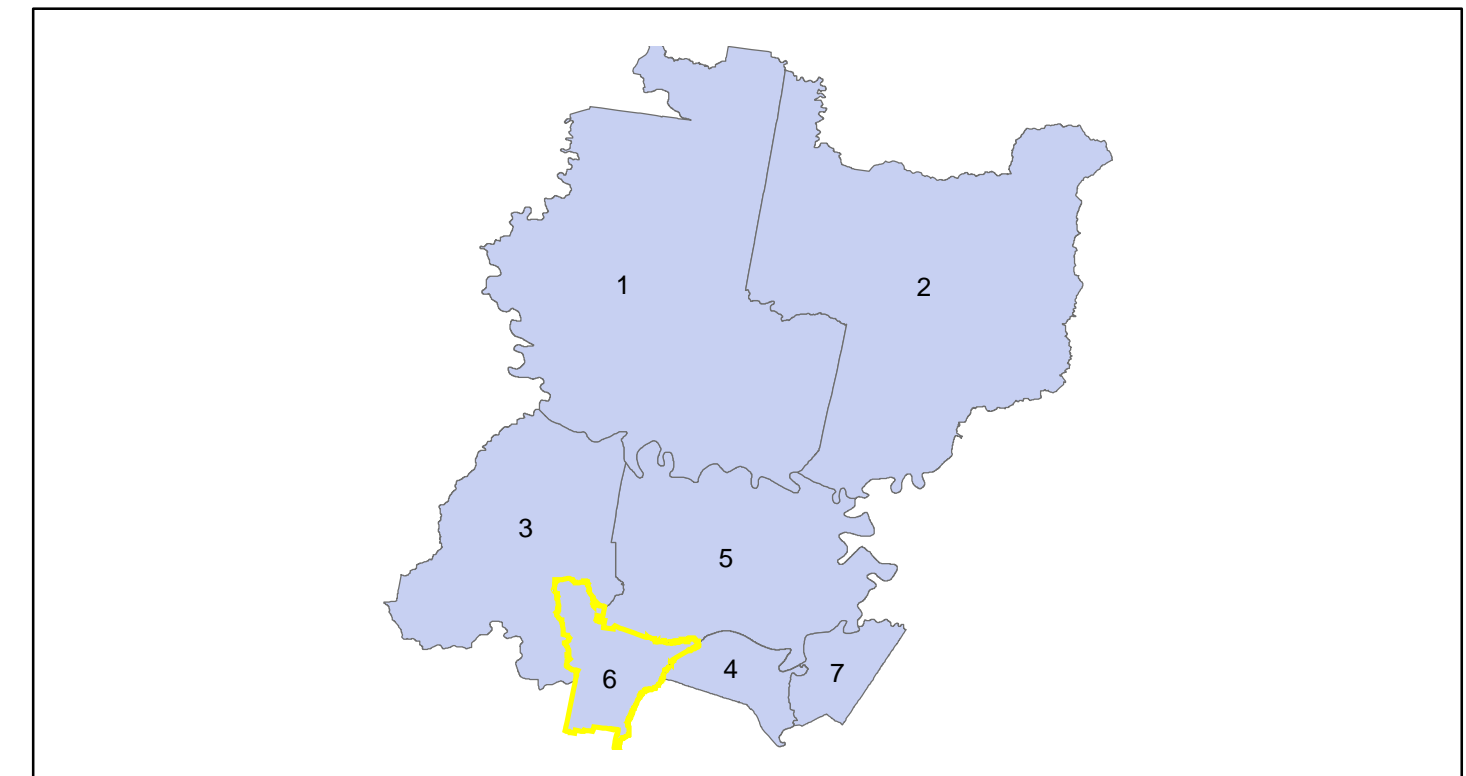
This Bush Fire Risk Management Plan (BFRMP) has been prepared by the Hawkesbury Bush Fire Management Committee (BFMC) pursuant to section 52 of the *Rural Fires Act 1997*.

The aim of this BFRMP is to reduce the adverse impact of bush fires on life, property and the environment.

The objectives of this BFRMP are to:

- reduce the number of human-induced bush fire ignitions that cause damage to life, property or the environment;
- manage fuel to reduce the spread and intensity of bush fires while minimising environmental/ecological impacts;
- reduce the community's vulnerability to bush fires by improving its preparedness; and
- effectively contain fires with a potential to cause damage to life, property and the environment.

This map forms part of the BFRMP for the Hawkesbury BFMC, covering the local government area(s) of Hawkesbury. It should be viewed in conjunction with the accompanying BFRMP document which provides further details on the BFMC area, the assets assessed and the risk assessment process used.



**Review**  
Under the *Rural Fires Act 1997* this plan must be reviewed and updated within each successive five year period following the constitution of the BFMC. The Hawkesbury BFMC will also review this plan as necessary. This may be triggered by a range of circumstances, including but not limited to:

- changes to the BFMC area, organisational responsibilities or legislation;
- changes to the bush fire risk in the area; or
- following a major fire event.

**Assets**  
The BFRMP identifies the assets that are considered by the Hawkesbury BFMC and community to be at risk from bush fires, assesses the bush fire risk to each asset and assigns treatments designed to mitigate the risk. Assets in the BFMC area identified as requiring treatments are listed in the assets table. Other assets within the BFMC area that were assessed as not requiring treatments within the life of this plan are listed in the appendix to the BFRMP document. The Map Ref number "NA" denotes non-spatial assets.

**Treatments**  
Specific treatments assigned to assets in the Hawkesbury area are listed in the treatments table and linked to the assets which they are designed to protect. Standard BFMC wide treatments (i.e. not linked to a specific asset) which occur on an ongoing basis within the BFMC area are:

- reviewing the bush fire prone land map;
- ensuring developments in the bush fire prone land comply with Planning for Bush Fire Protection;
- using the Local Environment Plans (LEPs) to control development in areas with a bush fire risk;
- having the standard bush fire danger period as required;
- requiring permits during bush fire danger periods;
- prosecution of arsonists/offenders;
- investigation of bush fire cause;
- normal fire suppression activities;
- assessing and managing compliance with strategic fire-fighting resource allocation management systems;
- preparation of a S2 Operations Coordination Plan;
- fire management plans or plans of management; and
- bush fire hazard complaints.

Note on LMZ. All areas not specifically mapped as an APZ, SFAZ or FEZ are considered as LMZ for this risk management plan. For areas identified by an LMZ polygon on the map, please refer to the BFRMP document for the specific land management objectives.

Zone	Purpose	Suppression Objective(s)	Zone characteristics
<b>Asset Protection Zone</b>	To protect human life, property and highly valued public assets and values.	To enable the safe use of <b>Direct Attack</b> suppression strategies within the zone. To minimise bush fire impacts on undervalued assets.	As per RFS document: Standards for Asset Protection Zones.
<b>Strategic Fire Advantage Zone</b>	To provide strategic areas of fire protection advantage which will reduce the speed and intensity of bush fires, and reduce the potential for spot fire development. To aid containment of wildfires to existing land management boundaries.	To improve the likelihood and safe use of <b>Parallel Attack</b> suppression strategies within the zone. <b>Indirect Attack</b> (back burning) in high to very high fire weather conditions within the zone. To reduce the likelihood of: Crown fire development within the zone; and/or Spot fire ignition potential from the zone.	Zone width related to suppression objectives and dependent upon: - Topography - Wind - Spotting propensity - Location of adjacent firebreaks - Mosaic pattern of treatment Assess Overall Fuel Hazard (OFH) once vegetation communities reach minimum fire thresholds within this plan. Management practices should aim to achieve mosaic fuel reduction patterns so that the majority of the SFAZ has an OFH of less than high.
<b>Land Management Zone</b>	To meet relevant land management objectives in areas where SFAZs or APZs are not appropriate.	As per the land management and fire protection objectives of the responsible land management agency. To reduce the likelihood of spread of fires. To undertake mosaic burning	As appropriate to achieve land management e.g. heritage and/or fire protection e.g. broad scale mosaic burning objectives.
<b>Fire Exclusion Zone</b>	To exclude bush fires.	N/A	Variable dependent on size of fire sensitive area requiring protection.

**Assets**

	Human - Residential		Commercial Forests
	Human - Other		Drinking Water Catchments
	Social Fire Protection - Locally Important		Environmental - Locally Important
	Economic - Agricultural		Environmental - Vulnerable Fire Weather Conditions
	Economic - Commercial		Environmental - Endangered (Open)
	Economic - Infrastructure		Cultural - Aboriginal Heritage
	Economic - Tourism and Recreational		Cultural - Other
	Economic - Mines		Cultural - Non Indigenous

**Bush Fire Management Zones**

	Fire Exclusion Zone (FEZ)		Land Management Zone (LMZ)
	Asset Protection Zone (APZ)		Strategic Fire Advantage Zone (SFAZ)

**Base Data Layers**

	Major Roads Sealed		Drainage Present
	Major Roads Unsealed		Drainage Non Present
	Secondary Road Sealed		Hydro-Line Present
	Secondary Road Unsealed		Hydro-Line Non Present
	Local Road Sealed		Contour (100m)
	Local Road Unsealed		Contour (50m)
	Local Road Unspecified		Map Display Area
	4WD Track Unspecified		Local Government Area
	Path		Crown Land
	Heavy Rail		State Forests
	Light Rail		National Park
	Heavy Rail Siding		

\*Note - Some base data layers may not be displayed on map

**Disclaimer**  
The Hawkesbury BFMC makes every effort to ensure the quality of the information available on this map. Before relying on the information on this map, users should carefully evaluate its accuracy, completeness and relevance for their purposes, and should obtain any appropriate professional advice relevant to their particular circumstances.

The Hawkesbury BFMC can not guarantee and assumes no legal liability or responsibility for the accuracy, currency or completeness of the information. Copyright: Hawkesbury BFMC 2017.

Authorized by ..... of Hawkesbury BFMC.  
Date created: Thursday, 9 November 2017  
BFRR version 2.1.26.0 +S



# Hawkesbury BFMC Bush Fire Risk Management Plan 2017

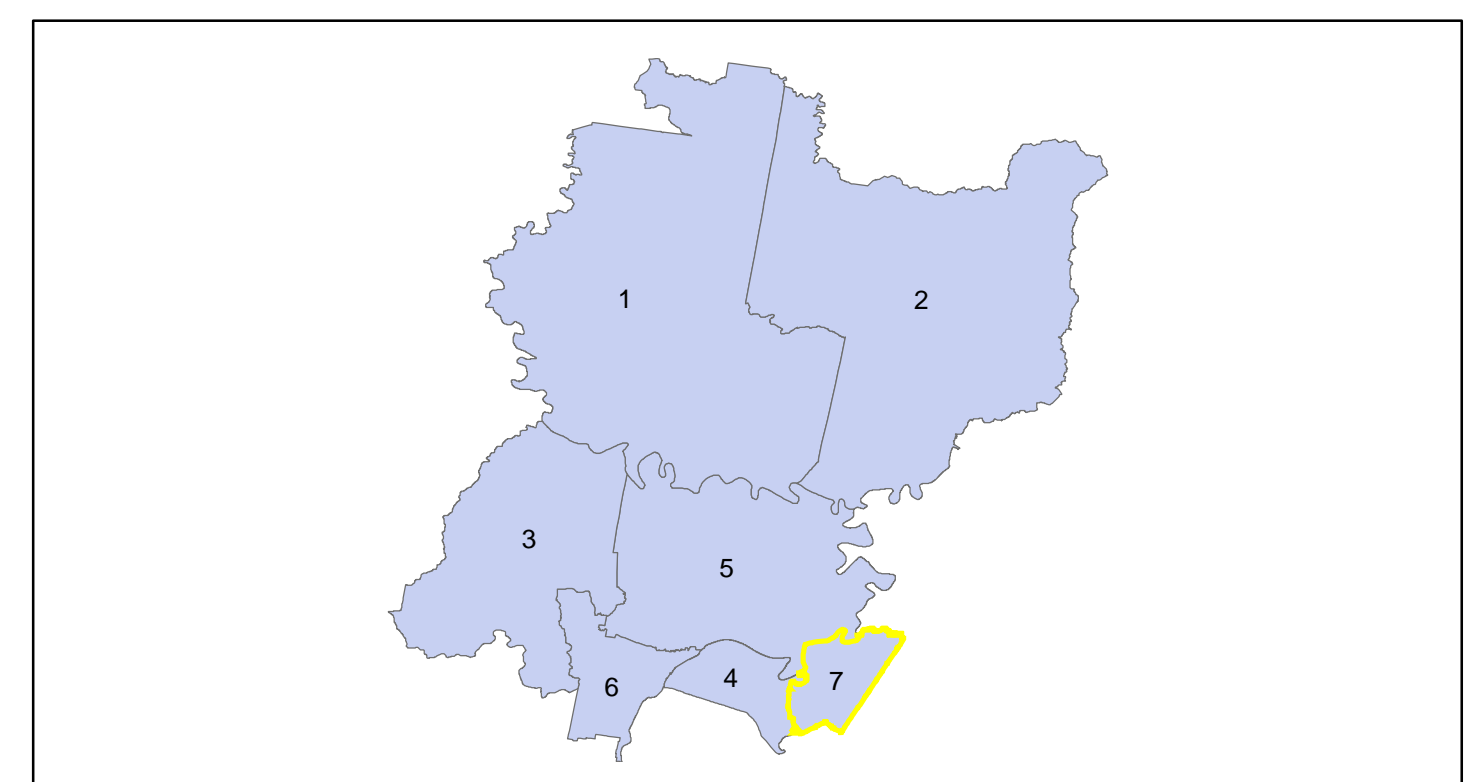
## Scheyville - Map Display Area Map 7 of 7

This Bush Fire Risk Management Plan (BFRMP) has been prepared by the Hawkesbury Bush Fire Management Committee (BFMC) pursuant to section 52 of the *Rural Fires Act 1997*.

The aim of this BFRMP is to reduce the adverse impact of bush fires on life, property and the environment.

- The objectives of this BFRMP are to:
- reduce the number of human-induced bush fire ignitions that cause damage to life, property or the environment;
  - manage fuel to reduce the spread and intensity of bush fires while minimising environmental/ecological impacts;
  - reduce the community's vulnerability to bush fires by improving its preparedness; and
  - effectively contain fires with a potential to cause damage to life, property and the environment.

This map forms part of the BFRMP for the Hawkesbury BFMC, covering the local government area(s) of Hawkesbury. It should be viewed in conjunction with the accompanying BFRMP document which provides further details on the BFMC area, the assets assessed and the risk assessment process used.



**Review**  
Under the *Rural Fires Act 1997* this plan must be reviewed and updated within each successive five year period following the constitution of the BFMC. The Hawkesbury BFMC will also review this plan as necessary. This may be triggered by a range of circumstances, including but not limited to:

- changes to the BFMC area, organisational responsibilities or legislation;
- changes to the bush fire risk in the area; or
- following a major fire event.

**Assets**  
This BFRMP identifies the assets that are considered by the Hawkesbury BFMC and community to be at risk from bush fires, assesses the bush fire risk to each asset and assigns treatments designed to mitigate the risk. Assets in the BFMC area identified as requiring treatments are listed in the assets table. Other assets within the BFMC area that were assessed as not requiring treatments within the life of this plan are listed in the appendix to the BFRMP document. The Map Ref number "NA" denotes non-spatial assets.

- Treatments**  
Specific treatments assigned to assets in the Hawkesbury area are listed in the treatments table and linked to the assets which they are designed to protect. Standard BFMC wide treatments (i.e. not linked to a specific asset) which occur on an ongoing basis within the BFMC area are:
- reviewing the bush fire prone land map;
  - ensuring developments in the bush fire prone land comply with Planning for Bush Fire Protection;
  - using the Local Environment Plans (LEPs) to control development in areas with a bush fire risk;
  - paying the standard bush fire danger period as required;
  - requiring permits during bush fire danger periods;
  - prosecution of arsonists/offenders;
  - investigation of bush fire cause;
  - normal fire suppression activities;
  - assessing and managing compliance with strategic fire-fighting resource allocation management systems;
  - preparation of a S2 Operations Coordination Plan;
  - fire management plans or plans of management; and
  - bush fire hazard complaints.

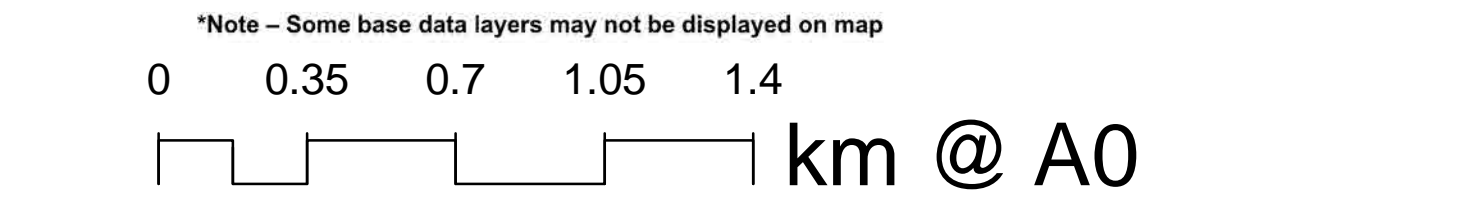
Note on LMZ: All areas not specifically mapped as an APZ, SFAZ or FEZ are considered as LMZ for this risk management plan. For areas identified by an LMZ polygon on the map, please refer to the BFRMP document for the specific land management objectives.

Zone	Purpose	Suppression Objective(s)	Zone characteristics
<b>Asset Protection Zone</b>	To protect human life, property and highly valued public assets and values.	To enable the safe use of <b>Direct Attack</b> suppression strategies within the zone. To minimise bush fire impacts on undervalued assets.	As per RFS document: Standards for Asset Protection Zones.
<b>Strategic Fire Advantage Zone</b>	To provide strategic areas of fire protection advantage which will reduce the spread and intensity of bush fires, and reduce the potential for spot fire development. To aid containment of wildfires to existing management boundaries.	To improve the likelihood and safe use of: <b>Parallel Attack</b> suppression strategies within the zone, and/or <b>Indirect Attack</b> (back burning) in high to very high fire weather conditions within the zone. To reduce the likelihood of: Crown fire development within the zone, and/or Spot fire ignition potential from the zone.	Zone width related to suppression objectives and dependent upon: - Topography - Aspect - Spotting propensity - Location of adjacent firebreaks - Mosaic pattern of treatment Assess Overall Fuel Hazard (OFH) once vegetation communities reach minimum fire thresholds within this plan. Management practices should aim to achieve mosaic fuel reduction patterns so that the majority of the SFAZ has an OFH of less than high.
<b>Land Management Zone</b>	To meet relevant land management objectives in areas where SFAZs or APZs are not appropriate.	As per the land management and fire protection objectives of the responsible land management agency. To reduce the likelihood of spread of fires. To undertake mosaic burning	As appropriate to achieve land management e.g. heritage and/or fire protection e.g. broad scale mosaic burning objectives.
<b>Fire Exclusion Zone</b>	To exclude bush fires.	N/A	Variable dependent on size of fire sensitive area requiring protection.

- Assets**
- Human - Residential
  - Human - Other
  - Special Fire Protection
  - Economic - Agricultural
  - Economic - Commercial
  - Economic - Infrastructure
  - Economic - Tourism and Recreational
  - Economic - Mines
  - Commercial Forests
  - Drinking Water Catchments
  - Environmental - Locally Important
  - Environmental - Vulnerable
  - Environmental - Endangered (Open)
  - Cultural - Geological Heritage
  - Cultural - Other
  - Cultural - Non Indigenous

- Bush Fire Management Zones**
- Fire Exclusion Zone (FEZ)
  - Asset Protection Zone (APZ)
  - Land Management Zone (LMZ)
  - Strategic Fire Advantage Zone (SFAZ)

- Base Data Layers**
- Major Roads Sealed
  - Major Roads Unsealed
  - Secondary Road Sealed
  - Secondary Road Unsealed
  - Local Road Sealed
  - Local Road Unsealed
  - Local Road Unspecified
  - 4WD Track Unspecified
  - Path
  - Heavy Rail
  - Light Rail
  - Heavy Rail Siding
  - Drainage Potential
  - Drainage Non Potential
  - Hydro-Line Potential
  - Hydro-Line Non Potential
  - Contour (100m)
  - Contour (50m)
  - Map Display Area
  - Local Government Area
  - Crown Land
  - State Forests
  - National Park



**Disclaimer**  
The Hawkesbury BFMC makes every effort to ensure the quality of the information available on this map. Before relying on the information on this map, users should carefully evaluate its accuracy, completeness and relevance for their purposes, and should obtain any appropriate professional advice relevant to their particular circumstances.

The Hawkesbury BFMC can not guarantee and assumes no legal liability or responsibility for the accuracy, currency or completeness of the information. Copyright: Hawkesbury BFMC 2017.

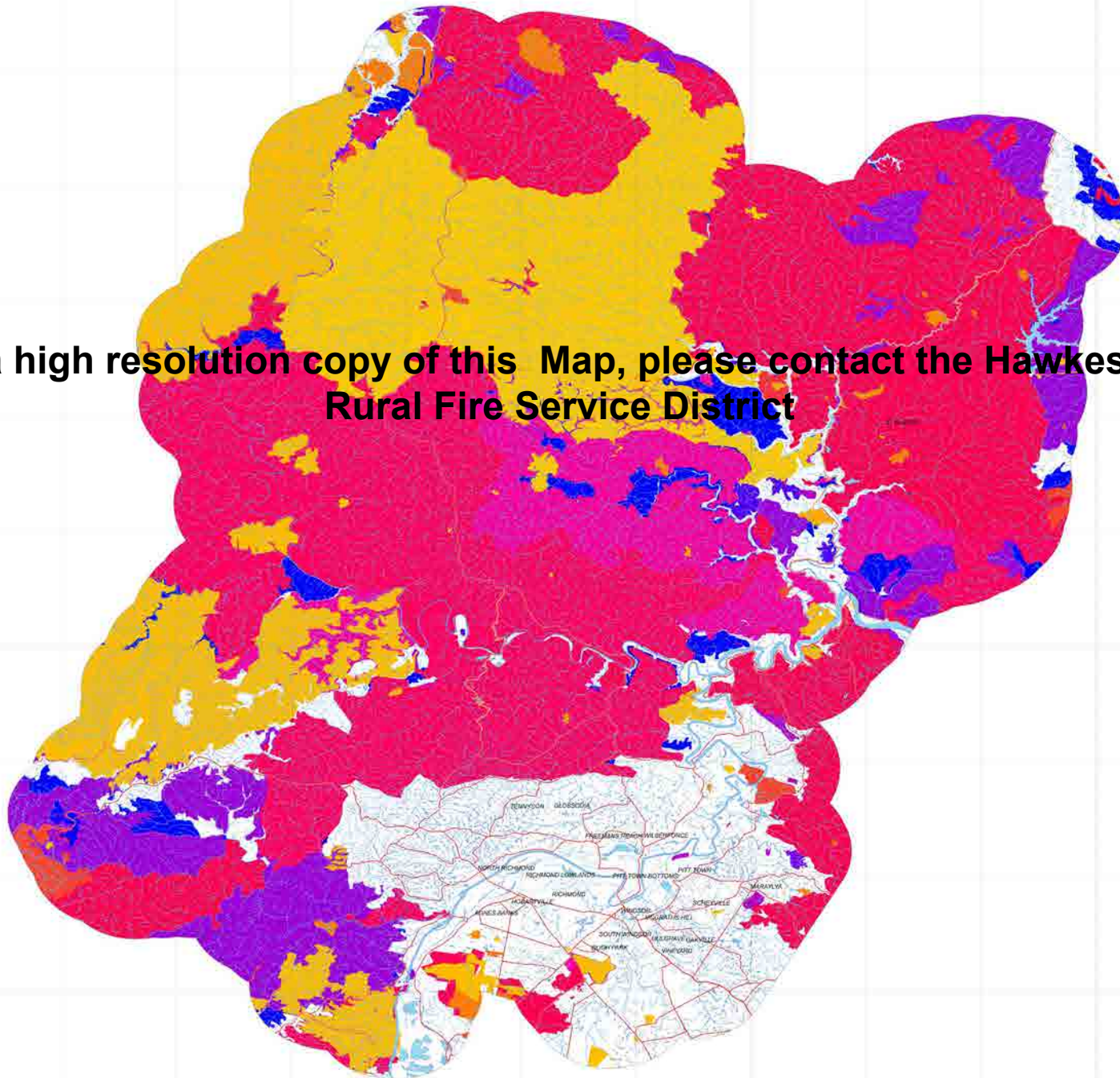


**MAP 8**  
**Hawkesbury BFMC**

**Time Since Fire**

Number of years since last burnt (May 2016 Data)

**For a high resolution copy of this Map, please contact the Hawkesbury Rural Fire Service District**



**Legend**

**Time Since Fire (May 2016)**

- 0
- 1
- 2
- 3
- 4
- 5
- 6
- 7
- 8
- 9
- 10
- 11
- 12
- 13
- 14
- 15
- 16
- 17
- 18
- 19
- 20
- 21
- 22
- 23
- 24
- 25 +

**Major Roads**

- Major Road Sealed
- Major Road Unsealed
- Secondary Road Sealed
- Secondary Road Unsealed

**Hydrology**

- Hydro-Line Perennial
- Hydro-Line Non Perennial
- Drainage Perennial
- Drainage Non Perennial

**Jurisdiction**

- Jurisdiction
- BFMC 5km Buffer
- Other States
- NSW

**Data Dictionary**

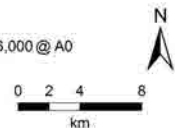
Data Type	Source	Date
2016 Fire Statistics (as of 30/06/2016)	NSW RFS	May 2016
State of 1:100,000	NSW LPI	May 2016
Road Network	NSW LPI	May 2016
Drainage	NSW LPI	May 2016
Fire History	NSW RFS	May 2016
Local Government	NSW LPI	May 2016

**Disclaimer:**  
The NSW Rural Fire Service makes every effort to ensure the quality of the information available on this map. Before relying on the information on this map, users should carefully evaluate its accuracy, currency, completeness and relevance for their purposes, and should obtain any appropriate professional advice relevant to their particular circumstances.

The NSW Rural Fire Service can not guarantee and assumes no legal liability or responsibility for the accuracy, currency or completeness of the information.

Data Created: 10/05/2016 Created By: Sarah Fuxton, GIS Support  
2016 NSW Rural Fire Service

1:116,000 @ A0



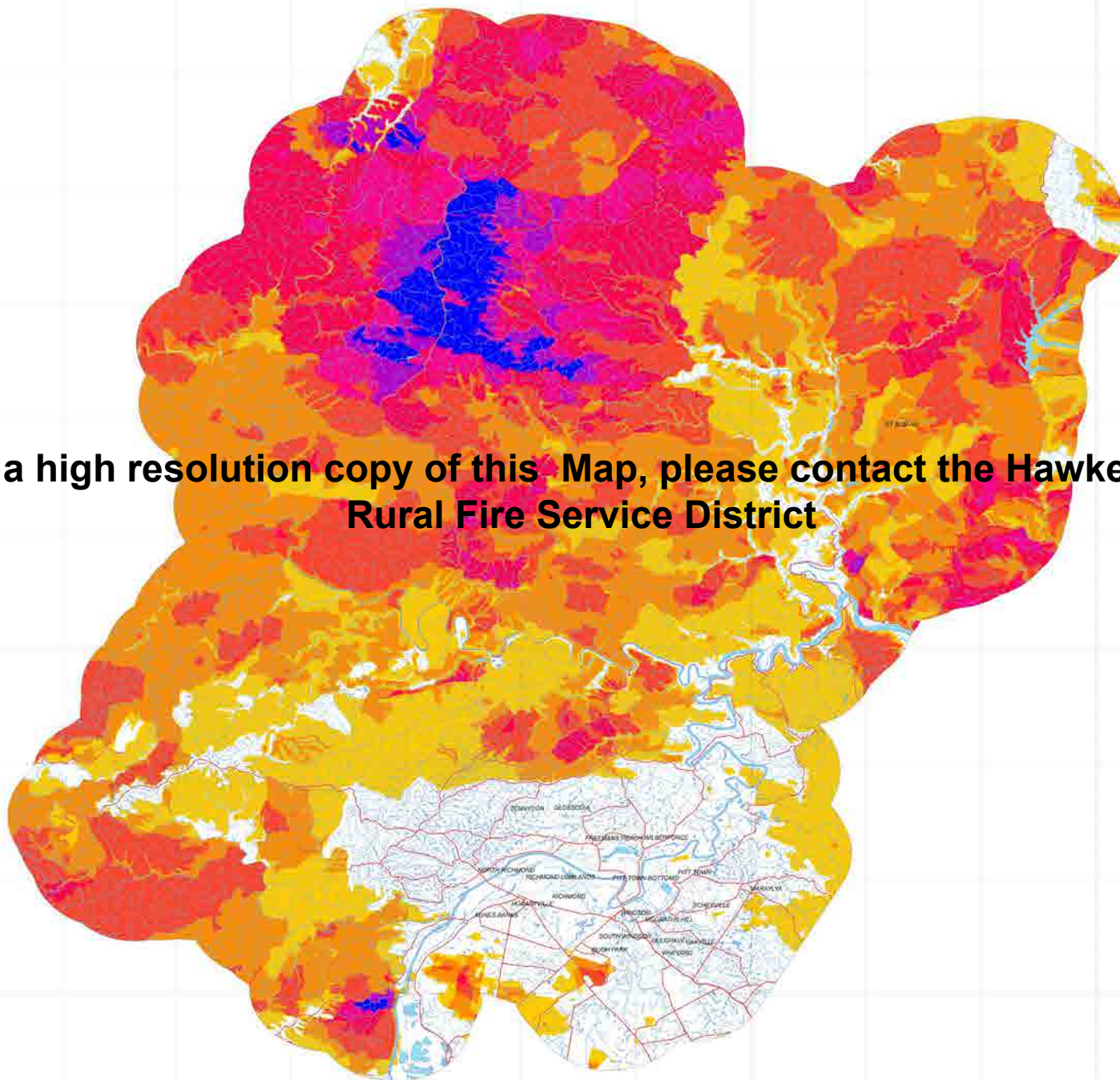


# Hawkesbury BFMC

## Bush Fire Frequency

Number of years with wildfires recorded (May 2016 Data)

**For a high resolution copy of this Map, please contact the Hawkesbury Rural Fire Service District**



**Legend**

**Fire Frequency (May 2016)**

- 1
- 2
- 3
- 4
- 5
- 6
- 7+

**Major Roads**

- Major Road Sealed
- Major Road Unsealed
- Secondary Road Sealed
- Secondary Road Unsealed

**Hydrology**

- Hydro-Line Perennial
- Hydro-Line Non Perennial
- Drainage Perennial
- Drainage Non Perennial

**Jurisdiction**

- Jurisdiction
- BFMC 5km Buffer
- Other States
- NSW

**Data Dictionary**

Data Type	Source	Date
BFMC Boundaries (see Map 8)	NSW DFRWS	May 2016
State or Territory	NSW LPI	May 2016
Road Network	NSW LPI	May 2016
Drainage	NSW LPI	May 2016
Fire History	NSW DFRWS	May 2016
Other Boundaries	NSW LPI	May 2016

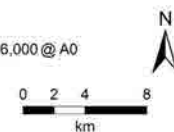
**Disclaimer:**  
The NSW Rural Fire Service makes every effort to ensure the quality of the information available on this map. Before relying on the information on this map, users should carefully evaluate its accuracy, currency, completeness and relevance for their purposes, and should obtain any appropriate professional advice relevant to their particular circumstances.

The NSW Rural Fire Service can not guarantee and assumes no legal liability or responsibility for the accuracy, currency or completeness of the information.

Date Created: 10/05/2016 Created By: Sarah Fuxton, GIS Support

© 2016 NSW Rural Fire Service

1:116,000 @ A0





For a high resolution copy of this Map, please contact the Hawkesbury Rural Fire Service District

# MAP10 Hawkesbury BFMC

Fire Threshold (May 2016)\*

\*Calculated using Vegetation Firewaters of NSW (version 3.53)

Vegetation categories (Muir, D. 2004) and Time Series Fire datasets have been combined to produce the Fire Threshold map. Table 1 interpretation of Kerry et al. 2004, NSW RFS (2004) lists the Fire Threshold values used for each vegetation community to calculate the Fire Threshold categories.

Each vegetation community has a minimum and maximum fire regime threshold (Kerry et al. 2004). A fire regime between these thresholds (within threshold) is the fire threshold for a specific point or vegetation community, to avoid being at the extreme in a community. A value is conservatively visually shown as a range of either no sufficient additional maximum threshold or no fire regime burning (below minimum threshold). Some vegetation communities are classified as fire intolerant and therefore do not have a fire threshold.

Fire frequency, fire intensity, season, extent (patchiness) and type of fire also influence whether or not a specific fire event has caused or is likely to cause a decline in biodiversity. The risks will be used to assist the BFMC in developing appropriate fire management strategies to reduce the risk of assets being affected by wildfires, and where possible, not impacting negatively on local biodiversity.

Additional information about the fire threshold map may be found in the document Bush Fire Risk Management Planning Guidelines for BFMCs.

**References:**  
 - Muir, D. (2004). Crown's Crown to Desert Dunes: The Native Vegetation of NSW and the ACT. Department of Environment and Conservation.  
 - Kerry, B., Sutherland, E., Taiter, E., and Broadbent, S. (2004). Guidelines for Ecologically Sustainable Fire Management. NSW Biodiversity Strategy. NSW National Parks and Wildlife Service.  
 - NSW Rural Fire Service. (2006). Bush Fire Environmental Assessment Guide.

Table 1: Fire Threshold Values.

Vegetation Community	Min. Threshold (LMD)	Max. Threshold
Acacia-Cyperoid	60	70
Blue Gum Forest (Shrub)	70	80
Blue Gum Forest (Open)	15	20
Green Mallee	5	10
Heathland	0	15
Dry Sclerophyll Forest (Shrub)	5	10
Dry Sclerophyll Forest (Open)	15	20
Heathland	10	20
Prostrate Mallee	10	20
Tropical Rainforest	10	20
Salt-tolerant Mallee	10	20
Salt-tolerant Mallee	10	20
Swampy Woodland (Shrub)	20	30
Swampy Woodland (Open)	10	20
Wet Sclerophyll Forest	10	20
Wet Sclerophyll Forest	10	20
Wet Sclerophyll Forest	10	20

**Legend**

**Threshold**

- Above
- Within
- Below
- Intolerant

**Major Roads**

- Major Road Sealed
- Major Road Unsealed
- Secondary Road Sealed
- Secondary Road Unsealed

**Hydrology**

- Hydro-Line Perennial
- Hydro-Line Non Perennial
- Drainage Perennial
- Drainage Non Perennial

**Jurisdiction**

- Jurisdiction
- BFMC 5km Buffer
- Other States
- NSW

**Data Dictionary:**

Data Type	Source	Date
BFMC Boundaries (5km Buffer)	2015 LPI	May 2016
State of NSW	2015 LPI	May 2016
Road Network	2015 LPI	May 2016
Drainage	2015 LPI	May 2016
Fire Threshold	2015 LPI	May 2016
Asset Boundaries	2015 LPI	May 2016

**Disclaimer:**  
 The NSW Rural Fire Service makes every effort to ensure the quality of the information available on this map. Before relying on the information on this map, users should carefully evaluate its accuracy, currency, completeness and relevance for their purposes, and should obtain any appropriate professional advice relevant to their particular circumstances.

The NSW Rural Fire Service can not guarantee and assumes no responsibility or endorsement for the accuracy, currency or completeness of the information.

Data Created: 10/05/2016 Created By: Sarah Fuxton, GIS Support  
 2016 NSW Rural Fire Service

1:116,000 @ A0

