



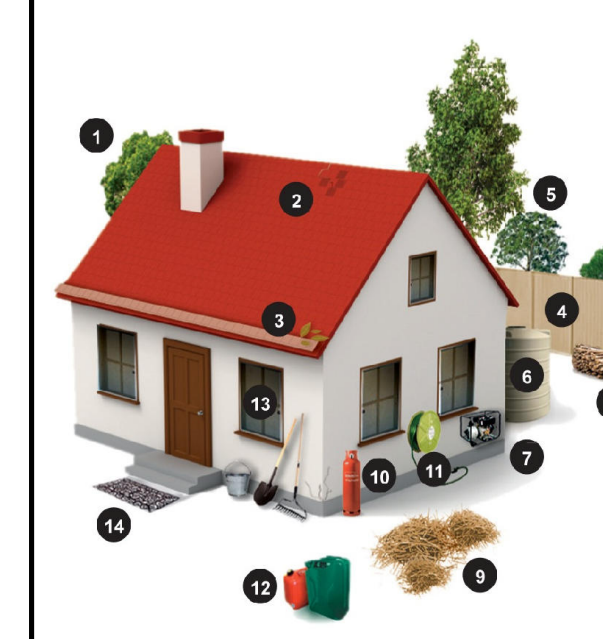
## MOUNT WILSON - MAP 1

### WORKS PROGRAM

Map Reference	BFRMP Treatment Reference	Strategy	Action	Responsible Agency	Scheduled Action Date
1	97	Hazard Reduction	Conduct fuel management works in SFAZ	OEH	2012-13
2	97	Hazard Reduction	Conduct fuel management works in SFAZ	OEH	2012
3	97	Hazard Reduction	Conduct fuel management works in SFAZ	OEH	2012-13
4	97	Hazard Reduction	Conduct fuel management works in SFAZ	OEH	2012-13
5	97	Hazard Reduction	Conduct fuel management works in SFAZ	OEH	2017-18
5	97	Hazard Reduction	Conduct fuel management works in SFAZ	OEH	2018-19
N/A	95	Hazard Reduction	Inspect/ maintain APZs as required	DL/LGA/Private	Ongoing
N/A	100	Preparedness	Inspect/ maintain/ construct fire trails	DL/LGA/Private	Ongoing
N/A	98	Community Education	Implement community engagement strategy or plan	RFS	Ongoing
6	97	Hazard Reduction	Conduct fuel management works in SFAZ	OEH/RFS/Private	2012-13
7	97	Hazard Reduction	Conduct fuel management works in SFAZ	OEH	2013
8	97	Hazard Reduction	Conduct fuel management works in SFAZ	OEH	2013-14
N/A	95	Hazard Reduction	Inspect/ maintain APZs as required	Private	Ongoing
N/A	96	Preparedness	Inspect/ maintain/ construct fire trails	DL/LGA/DECC	Ongoing
N/A	94	Community Education	Implement community engagement strategy or plan	RFS	Ongoing
N/A	341	Hazard Reduction	Inspect/ maintain APZs as required	Private	Ongoing
N/A	340	Preparedness	Inspect/ maintain/ construct fire trails	LGA/OEH	Ongoing
N/A	339	Community Education	Implement community engagement strategy or plan	RFS	Ongoing

NOTE: Implementation of works is subject to appropriate weather conditions and resource availability.

### Is your property fire-safe?

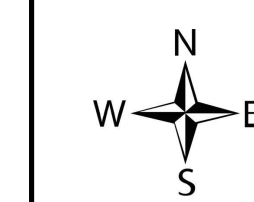


- Cut back any overhanging trees or shrubs and dispose of cuttings appropriately.
- Check the condition of your roof and replace any damaged or missing tiles.
- Clean leaves from the roof, gutters and downpipes and fit quality metal leaf guards.
- Non-combustible fences are the most effective at withstanding the intense heat generated by bush fire.
- Plant trees and shrubs that are less likely to ignite due to their low oil content.
- If you have a water tank, dam or swimming pool, consider installing a Static Water Supply sign (SWS).
- Enclose sub-floor areas.
- Store wood piles well away from the house and keep covered.
- Keep garden mulch away from the house and keep grass short.
- Make sure the pressure relief valves on LPG cylinders face outdoors.
- Ensure you have a hose which is long enough to reach every part of the home.
- Remove and store any flammable items away from the house.
- Install metal fly-wire or solid screens to the outside windows and doors.
- Have a non-combustible doormat.

Zone	Purpose	Suppression Objectives	Zone Characteristics
<b>Asset Protection Zone</b>	To protect human life, property and highly valued public assets and values.	To enable the safe use of Direct Attack suppression strategies within the zone. To minimise bush fire impacts on undefendable assets.	As per RFS document Standards for Asset Protection Zones.
<b>Strategic Fire Advantage Zone</b>	To provide strategic areas of fire protection advantage which will reduce the speed and intensity of bush fires, and reduce the potential for spot fire development. To aid containment of wildfires to existing management boundaries.	To improve the likelihood and safe use of Parallel Attack suppression strategies within the zone. Indirect Attack (back burning) in high to very high fire weather conditions within the zone. To reduce the likelihood of Crown fire development within the zone. and/or Spot fire ignition potential from the zone.	Zone width related to suppression objectives and dependant upon: •Topography •Aspect •Spotting propensity •Location of adjacent firebreaks •Mosaic pattern of treatment •Assess Overall Fuel Hazard (OFH) once vegetation communities reach minimum fire thresholds within this plan. Management practices should aim to achieve mosaic fuel reduction patterns so that the majority of the SFAZ has an OFH of less than high.
<b>Resident Preparation Zone</b>	To identify that residents have a vital role to play in bush fire risk management and that they are responsible for their own property preparedness.	To increase the preparedness of residents for bush fire and ensure that vegetation in close proximity to residential assets are adequately maintained. To provide a defensible space for residents / fire fighters and complement hazard reduction works carried out within Asset Protection Zones / Strategic Fire Advantage Zones.	Residents should strive to achieve a 'Fire-Safe' property as outlined in the illustration above. Concerns regarding the bush fire safety of neighbouring properties should be raised with the NSW Rural Fire Service.

### LEGEND

Proposed Strategic Fire Advantage Zone	Proposed Hazard Reduction Burn
Asset Protection Zone	Residential Preparation Zone
Strategic Fire Advantage Zone	Proposed Fire Trail
	Fire Trail



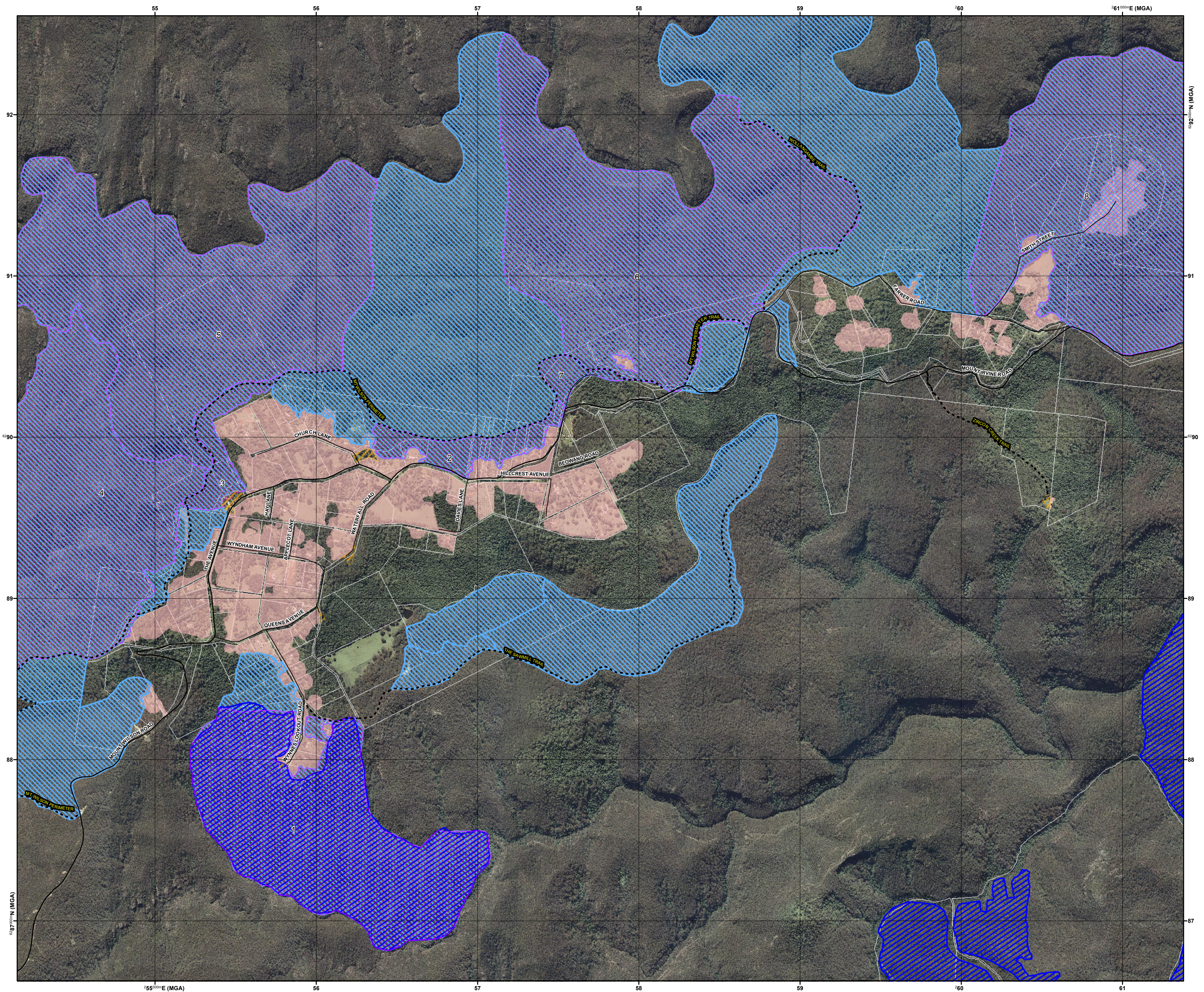
BUSH FIRE INFORMATION LINE  
 1800 679 737  
[www.rfs.nsw.gov.au](http://www.rfs.nsw.gov.au)  
 BUSH FIRE SERVICE  
 COORDINATING COMMITTEE

### PRODUCTION INFORMATION

Base Data: LPMA Cadastre and Topo Database  
 Map Projection: GCS GDA 1984  
 Print Date / Time: 20/02/2013 16:10 Hrs  
 Produced by: Cameron Lownds  
 1 grid square = 1 km<sup>2</sup> (1 000 000m<sup>2</sup>)  
 BFMC Approved: 20/12/2012

### WARNING INFORMATION

- This map has been prepared by the NSW Rural Fire Service ("The Service") using data supplied to it by other agencies and entities. See the "Data Dictionary" for further information about the sources of this data.
- The Service has not verified or checked the data used to prepare this map. The map may contain errors and omissions. The Service has not made any attempt to ground truth the map.
- There will be a margin of error in relation to the location of features recorded on the map. The Service is unable to specify the extent or magnitude of that margin of error.
- Significant changes may have occurred:
  - In the time between which the data was originally collected and the map produced; and
  - Since the map was produced.
- Users must, wherever possible, ground truth the map before relying on it or the accuracy of the map or the information recorded on the map for any purpose.
- The Service accepts no responsibility for any injury loss or damage arising from the use of this map or any errors or omissions in the information recorded on the map.



**BUSH FIRE SURVIVAL PLAN**

**Have you prepared your Bush Fire Survival Plan?**

**Download a copy of the Bush Fire Survival Plan from [www.rfs.nsw.gov.au](http://www.rfs.nsw.gov.au)**