

Cudgegong BFMFC Bush Fire Risk Management Plan 2019

SouthEast - Map Display Area

Map 2 of 4

DRAFT

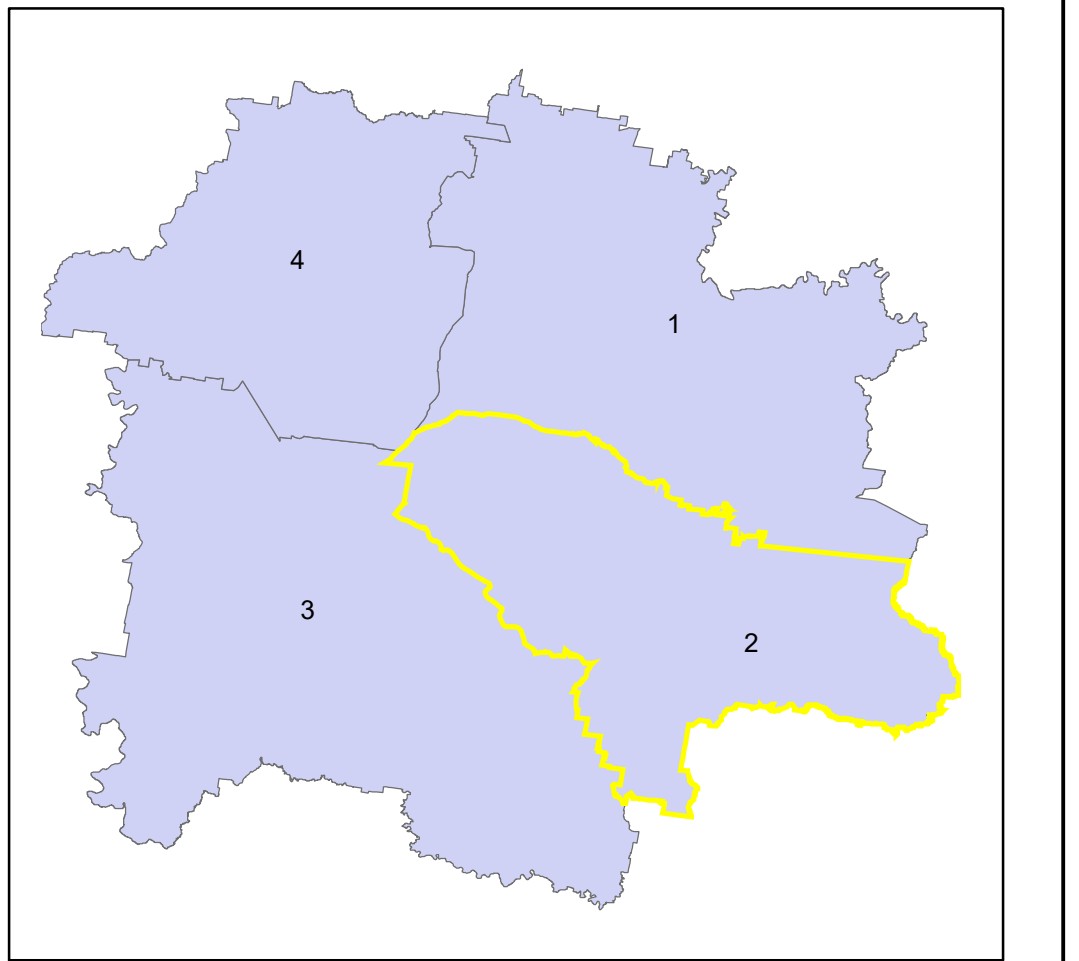
This Bush Fire Risk Management Plan (BFRMP) has been prepared by the Cudgegong Bush Fire Management Committee (BFMC) pursuant to section 52 of the Rural Fires Act 1997.

The aim of this BFRMP is to reduce the adverse impact of bush fires on life, property and the environment.

The objectives of this BFRMP are to:

- manage fuel to reduce the spread and intensity of bush fires while minimising environmental/ecological impacts;
- reduce the community's vulnerability to bush fires by improving its preparedness; and
- effectively contain fires with a potential to cause damage to life, property and the environment.

This map forms part of the BFRMP for the Cudgegong BFMFC, covering the local government area(s) of Mid-Western Regional. It should be viewed in conjunction with the accompanying BFRMP document which provides further details on the BFMFC area, the assets assessed and the risk assessment process used.



Review
Under the Rural Fires Act 1997 this plan must be reviewed and updated within each successive five year period following the constitution of the BFMFC. The Cudgegong BFMFC will also review this plan as necessary. This may be triggered by a range of circumstances, including but not limited to:

- changes to the BFMFC area, organisational responsibilities or legislation;
- changes to the bush fire risk in the area; or
- following a major fire event.

Assets
This BFRMP identifies the assets that are considered by the Cudgegong BFMFC and community to be at risk from bush fires, assesses the bush fire risk to each asset and assigns treatments designed to mitigate the risk. Assets in the BFMFC area identified as requiring treatments are listed in the assets table. Other assets within the BFMFC area that were assessed as not requiring treatments within the life of this plan are listed in the appendix to the BFRMP document. The Map Ref number "NA" denotes non-spatial assets.

Treatments
Specific treatments assigned to assets in the Cudgegong area are listed in the treatments table and linked to the assets which they are designed to protect. Standard BFMFC wide treatments (i.e. not linked to a specific asset) which occur on an ongoing basis within the BFMFC area are:

- reviewing the bush fire prone land map;
- ensuring developments in the bush fire prone land comply with Planning for Bush Fire Protection;
- using the Local Environment Plan's (LEPs) to control development in areas with a bush fire risk;
- varying the standard bush fire danger period as required;
- requiring permits during bush fire danger periods;
- prosecution of arsonists/offenders;
- investigation of bush fire causes;
- normal fire suppression activities;
- assessing and managing compliance with strategic fire-fighting resource allocation management systems;
- preparation of a S&S Operations Coordination Plan;

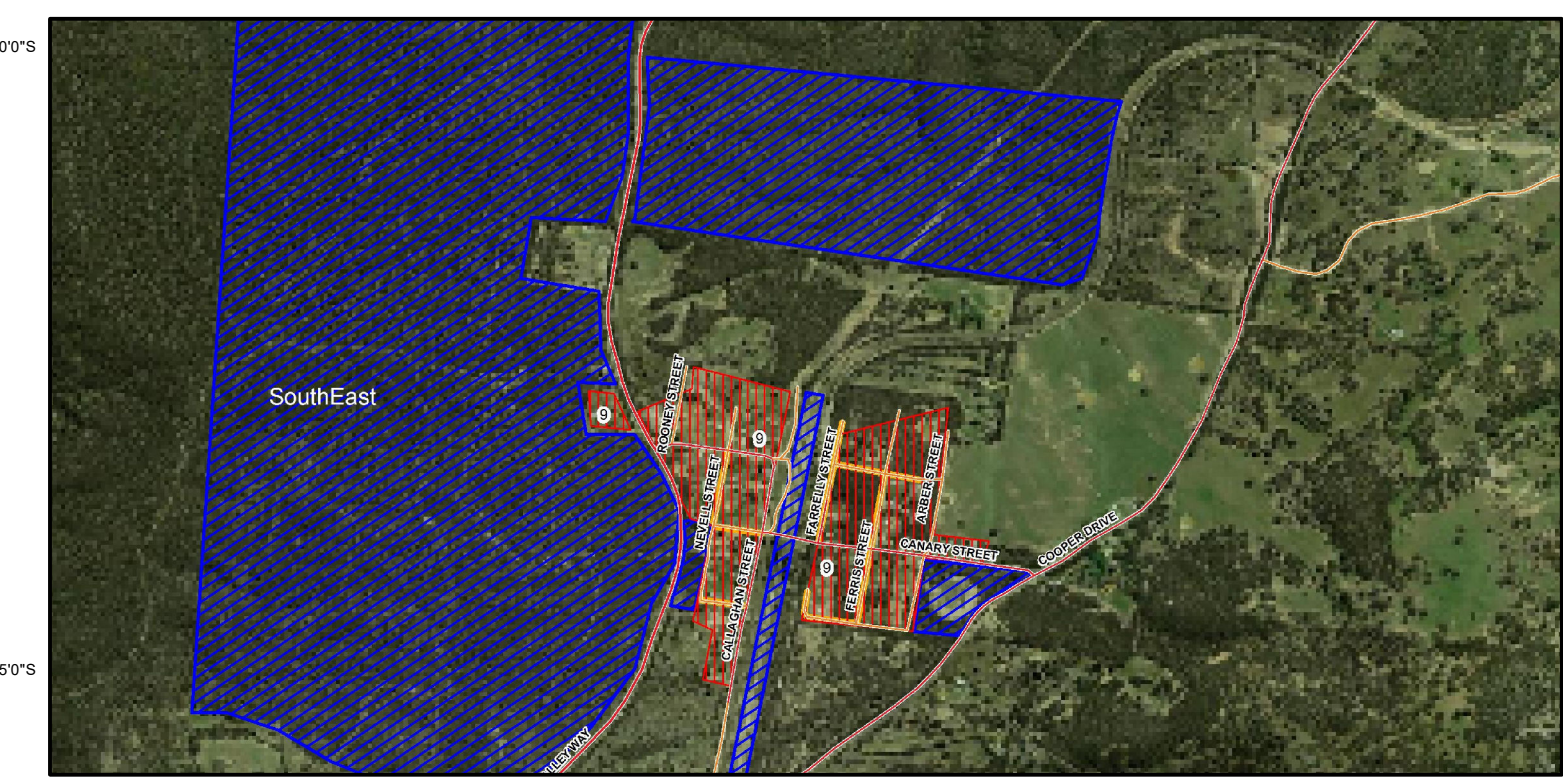
Note on LMZ: All areas not specifically mapped as an APZ, SFAZ or FEZ are considered as LMZ for this risk management plan. For areas identified by an LMZ polygon on the map, please refer to the BFRMP document for the specific land management objectives.

Map Ref	Asset name	Asset type	Subtype	Risk level	Priority	Treatment
9	Clandulla village	Human	Residential	Extreme	1B	(1)
157	Helfrons Hole Isolated Rural Properties	Human	Residential	Extreme	1C	T43,44
NA	Olinda Isolated Rural Properties	Human	Residential	Very High	2A	T1,58
2	Riverlea Road Rural Development	Human	Residential	Very High	2A	T1,21
24	Kandos South Residential Area	Human	Residential	Very High	2A	T36,53
25	Charbon village	Human	Residential	Very High	2A	T24,35,38
137	Maitland Bar Road Isolated Rural	Human	Residential	Very High	2A	T1
149	Nullo Mountain Isolated Rural Properties	Human	Residential	Very High	2A	(2)
154	Corucudgy Communications Site	Economic	Infrastructure	Very High	2A	T34,58,48
163	Baldy Peak Communications Site	Economic	Infrastructure	Very High	2A	T56
151	Dunns Swamp Camping & Visitor Area	Economic	Tourist and	Very High	2C	(3)
NA	Windamer Dam	Economic	Drinking	High	3A	T68
11	Bobobolar Communications Site	Economic	Infrastructure	High	3A	T67
30	Lue village	Human	Residential	High	3A	T11,11,31,54
38	Cudgegong Waters Park	Economic	Tourist and	High	3A	T52
71	Kandos East Residential Area	Human	Residential	High	3A	T38
72	Rylstone Rural Development	Human	Residential	High	3A	T1
73	Pinnacle Swamp Rural Development	Human	Residential	High	3A	T33,34,1
91	NSP Lue Road Bus Stop	Human	Other	High	3A	T49
98	Bald Mountain Communications Site	Economic	Infrastructure	High	3A	T67
108	Rylstone Water Treatment Plant	Economic	Infrastructure	High	3A	T14
112	Sibelco Australia Charbon	Economic	Commercial	High	3A	T55
113	Bowdens Silver Mine	Economic	Mines	High	3A	T55
123	Olinda Public Hall	Cultural	Other	High	3A	T56
131	Scouts NSW - Camp Cudgegong	Economic	Tourist and	High	3A	T56
146	RylstoneSouth West Rural Development	Human	Residential	High	3A	T1
159	Bara Rural Development	Human	Residential	High	3A	T1
170	Brogans Creek Isolated Rural Properties	Human	Residential	High	3A	T59,57
172	Private Plantations	Economic	Commercial	High	3A	T55
NA	Rylstone township	Human	Residential	Medium	4	T20
86	NSP 288 Riverlea Road	Human	Other	Medium	4	T51
62	Mudgee Airport	Economic	Infrastructure	Low	NA	T22
89	NSP Simpkins Park Kandos	Human	Other	Low	NA	T49
90	NSP Showground Rylstone	Human	Other	Low	NA	T49
104	Rylstone Sewage Treatment Plant	Economic	Infrastructure	Low	NA	T14
105	Kandos Sewage Treatment Plant	Economic	Infrastructure	Low	NA	T14

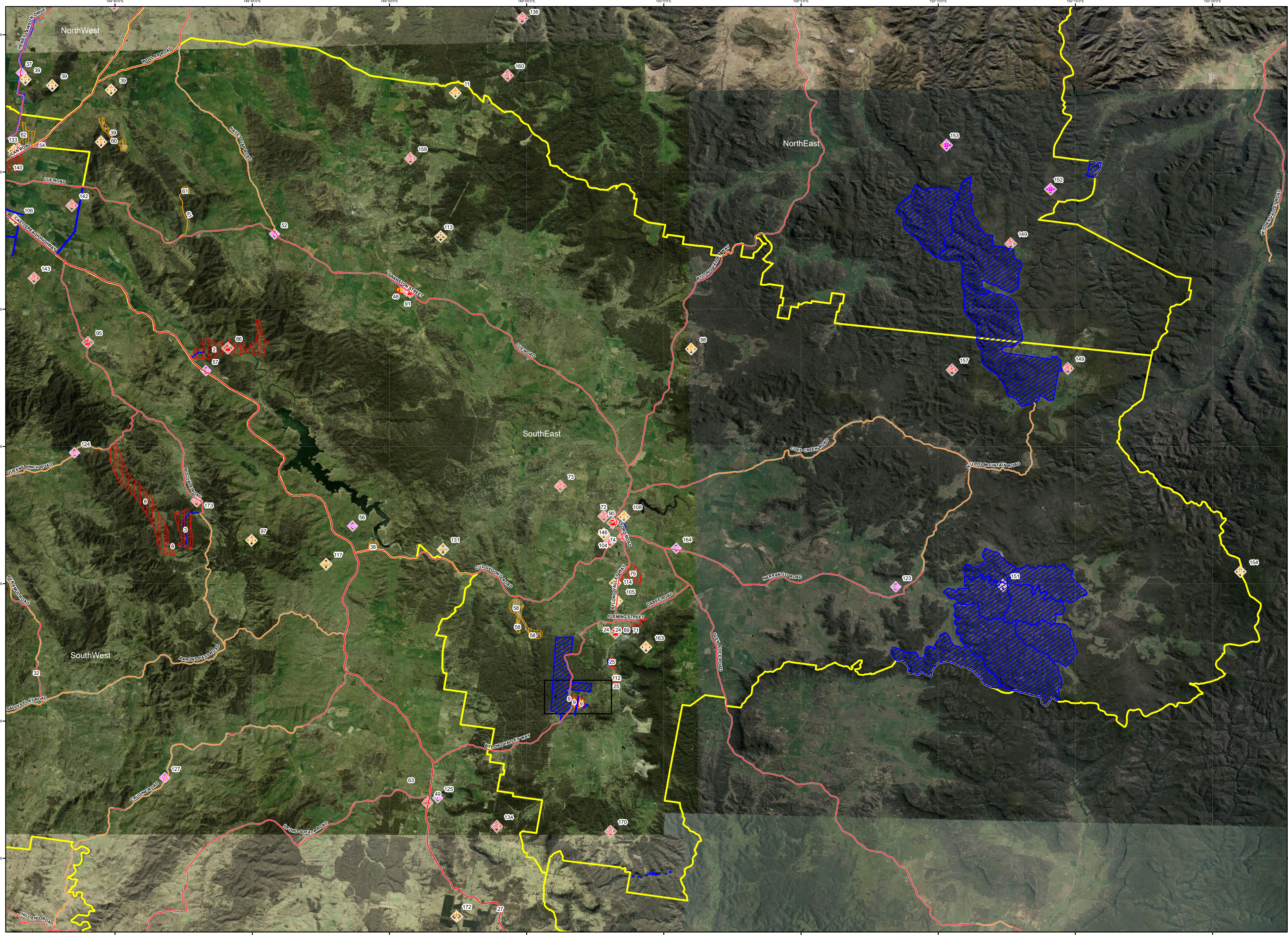
(1) T8,9,10,1,25,34,42

(2) T34,35,1,43,44,58,61,62,64,63,66,57

(3) T45,46,44,47,60,64,65



Inset map 1. Clandulla



Assets

- Human - Residential
- Human - Other
- Special Fire Protection
- Economic - Agricultural
- Economic - Commercial
- Economic - Infrastructure
- Economic - Tourism and Recreational
- Economic - Mines
- Commercial - Private
- Drinking Water Catchments
- Environmental - Locally Important
- Environmental - Wetlands
- Environmental - Endangered (Species)
- Environmental - Commercial
- Cultural - Aboriginal Heritage
- Cultural - Other
- Cultural - Non-Indigenous

Bush Fire Management Zones

- Fire Exclusion Zone (FEZ)
- Asset Protection Zone (APZ)
- Land Management Zone (LMZ)
- Strategic Fire Advantage Zone (SFAZ)

Base Data Layers

- Major Roads Sealed
- Major Roads Unsealed
- Secondary Road Sealed
- Secondary Road Unsealed
- Local Road Sealed
- Local Road Unsealed
- Local Road Unspecified
- AVD Track Unspecified
- Path
- Heavy Rail
- Light Rail
- Heavy Rail Ditching
- Drainage Perennial
- Drainage Non-Perennial
- Hydro-Line Perennial
- Hydro-Line Non-Perennial
- Contour (100m)
- Contour (50m)
- Map Display Area
- Local Government Area
- Crown Land
- State Forests
- National Park

*Note - Some base data layers may not be displayed on map

ID	Treatment strategy	Action	Agencies (Support)
T1	Community Education	Undertake Community Engagement Activity	RFS
T8	Hazard Reduction	Inspect SFAZ & maintain as required	FCNSW (RFS)
T9	Hazard Reduction	Inspect & Maintain SFAZ	TI CL (RFS)
T10	Hazard Reduction	Inspect & maintain SFAZ along rail line	John Holland Rail (RFS)
T25	Hazard Reduction	Inspect & maintain APZ on road easements	TI CL (RFS)
T34	Preparedness	Maintain Fire Trails	FCNSW (RFS)
T35	Hazard Reduction	Inspect & maintain LMZ	FCNSW
T42	Hazard Reduction	Undertake burn in SFAZ	FCNSW (RFS)
T43	Ignition Management	Implement remote area solid fuel fire ban in	OEH
T44	Preparedness	Maintain fire trails	OEH
T53	Hazard Reduction	Undertake mechanical works in APZs as	Private (RFS)
T54	Ignition Management	Prepare & implement Ignition Management Plan	LGA (RFS)
T57	Hazard Reduction	Undertake burn in SFAZ	RFS
T59	Hazard Reduction	Undertake burn in LMZ	OEH
T61	Hazard Reduction	Undertake burn in LMZ	OEH
T63	Hazard Reduction	Undertake burn in LMZ in 2223	OEH
T66	Hazard Reduction	Undertake burn in SFAZ in 2425	OEH
T48	Hazard Reduction	Inspect & Maintain APZ	OEH
T21	Hazard Reduction	Inspect & maintain SFAZ lineal break	LGA (RFS)
T22	Hazard Reduction	Inspect & maintain SFAZ lineal break	LGA (RFS)
T24	Hazard Reduction	Inspect and maintain SFAZ	TI CL (RFS)
T36	Community Education	Undertake Community Engagement Activity	FRNSW (RFS)
T56	Hazard Reduction	Inspect & maintain APZ	Private
T58	Hazard Reduction	Undertake burn in LMZ	OEH
T62	Hazard Reduction	Undertake burn in SFAZ	OEH
T64	Hazard Reduction	Undertake burn in SFAZ in 2223	OEH

ID	Treatment strategy	Action	Agencies (Support)
T65	Hazard Reduction	Undertake burn in SFAZ in 2324	OEH
T45	Ignition Management	Implement TOBANs with signage & visitor info	OEH
T46	Community Education	Maintain onsite public information	OEH
T47	Preparedness	Maintain closure gates	OEH
T60	Hazard Reduction	Undertake burn in SFAZ	OEH
T11	Hazard Reduction	Inspect & maintain SFAZ along rail line	John Holland Rail (RFS)
T14	Hazard Reduction	Inspect and maintain APZ	LGA
T31	Hazard Reduction	Inspect and maintain APZs on road easments	LGA
T33	Hazard Reduction	Inspect & maintain LMZ	FCNSW
T49	Hazard Reduction	Maintain fuels in accordance with guidelines	LGA (RFS)
T52	Property Planning	Emergency Management & Evacuation Plans	Private (RFS)
T55	Property Planning	Develop & implement Bush Fire Preparedness	Private
T67	Hazard Reduction	Inspect & maintain APZ	RFS
T68	Property Planning	Develop & implement Bush Fire Preparedness	State Water
T20	Hazard Reduction	Inspect & maintain SFAZ along rail line	John Holland Rail (RFS)
T51	Hazard Reduction	Maintain fuels in accordance with guidelines	Private (RFS)

Disclaimer
The Cudgegong BFMFC makes every effort to ensure the quality of the information available on this map. Before relying on the information on this map, users should carefully evaluate its accuracy, currency or completeness of the information. Copyright: Cudgegong BFMFC 2019.

The Cudgegong BFMFC can not guarantee and assumes no legal liability or responsibility for the accuracy, currency or completeness of the information. Copyright: Cudgegong BFMFC 2019.
Authorized by: of Cudgegong BFMFC.
Date created: Monday, 3 June 2019
BFR version 2.1,26.0