

Chifley Bush Fire Management Committee

Bush Fire Risk Management Plan

Table of Contents

<i>Glossary</i>	6
<i>Chapter 1. Introduction</i>	7
1.1 Background	7
1.2 Aim and Objectives	7
1.3 Description of the Chifley BFMC Area	7
1.3.1 Location and land tenure	7
1.3.2 Climate and bush fire season	8
1.3.3 Population and demographic information	9
1.3.4 History of bush fire frequency and ignition cause	11
<i>Chapter 2. Identifying and Assessing the Bush Fire Risk</i>	12
2.1 Process	12
2.2 Communication and Consultation	12
2.3 Identifying the Bush Fire Risk	13
2.3.1 Assets	13
2.3.2 Assessing the Bush Fire Risk - Consequence	14
2.3.3 Assessing the Bush Fire Risk - Likelihood	15
2.3.4 Identifying the level of risk	15
2.3.5 Evaluating the Bush Fire Risk	15
2.3.6 Prioritising Treatments	15
2.3.7 Risk Acceptability	16
<i>Chapter 3. Treating the Risk</i>	17
3.1 Bush Fire Management Zones	17
3.2 BFMC Wide Treatments	19
3.3 Asset Specific Treatments	21
3.4 Fire Thresholds	22
3.5 Annual Works Programs	23
3.6 Implementation	23
<i>Chapter 4. Performance Monitoring and Reviewing</i>	24
4.1 Review	24
4.2 Monitoring	24
4.3 Reporting	24
4.4 Performance Measurements	24
<i>Appendix 1 Community Participation Strategy</i>	26
<i>Appendix 2 Asset Register</i>	30
<i>Appendix 3 Treatment Register</i>	39
<i>Appendix 4 Maps</i>	46
<i>Appendix 5: Neighbourhood Safer Places</i>	48

List of Tables

<i>Table 1.1 Land Tenure</i>	8
<i>Table 1.2 Demographic Profile</i>	10
<i>Table 3.1 Bush Fire Management Zones: Purpose, objectives and characteristics</i>	18
<i>Table 3.2 Asset specific treatments used in the Chifley BFMC area</i>	21
<i>Table 3.3 Fire Thresholds for Vegetation Categories</i>	22
<i>Appendix Table 1.1 Community Participation Plan</i>	29
<i>Appendix Table 5.1 Neighbourhood Safer Places</i>	48

List of Figures

<i>Figure 2.1 Overview of the risk assessment process</i>	12
-----------------------------------------------------------------	----

Authorisation

In accordance with Part 3 Division 4 of the Rural Fires Act 1997, this Plan has been prepared by the Chifley Bush Fire Management Committee and has been endorsed at the BFMC meeting on 13 October 2020 for submission to the Bush Fire Coordinating Committee.

Recommended



..... 30 / 10 / 2020

Chairperson
Chifley Bush Fire Management Committee

Approved



..... 3 / 2 / 21

On behalf of the
NSW Bush Fire Coordinating Committee

Amendment List

Amendment		Entered	
Number	Date	Signature	Date

Glossary

Assets: anything valued by the community which includes houses, crops, heritage buildings and places, infrastructure, the environment, businesses, and forests, that may be at risk from bush fire.

Bush Fire: a general term used to describe fire in vegetation, includes grass fire.

Bush Fire Hazard: the potential severity of a bush fire, which is determined by fuel load, fuel arrangement and topography under a given climatic condition.

Bush Fire Risk: the chance of a bush fire igniting, spreading and causing damage to the community or the assets they value.

Bush Fire Risk Management: a systematic process that provides a range of treatments which contribute to the well being of communities and the environment, which suffer the adverse effects of wildfire/bush fire.

Bush Fire Threat: potential bush fire exposure of an asset due to the proximity and type of a hazard and the slope on which the hazard is situated.

Consequence: outcome or impact of a bush fire event.

Fire Fighting Authorities: the NSW Rural Fire Service, Fire & Rescue NSW, the National Parks and Wildlife Service and Forestry Corporation of NSW.

Likelihood: the chance of a bush fire igniting and spreading.

Major Bush Fire: A bush fire which requires the attendance of multiple brigades, or causes damage to property or injury to one or more persons.

Display area: geographic area determined by the Bush Fire Management Committee which is used to provide a suitable area and scale for community participation and mapping display purposes.

Recovery costs: the capacity of an asset to recover from the impacts of a bush fire.

Risk Acceptance: an informed decision to accept the consequences and the likelihood of a particular risk.

Risk Analysis: a systematic process to understand the nature of and to deduce the level of risk.

Risk Assessment: the overall process of risk identification, risk analysis and risk evaluation.

Risk Identification: the process of determining what, where, when, why, and how something could happen.

Risk Treatment: the process of selection and implementation of measures to modify risk.

Vulnerability: the susceptibility of an asset to the impacts of bush fire.

Chapter 1. Introduction

1.1 Background

Under the *Rural Fires Act 1997* the Bush Fire Coordinating Committee (BFCC) must constitute a Bush Fire Management Committee (BFMC) for each area in the State, which is subject to the risk of bush fires. Each BFMC is required to prepare and submit to the BFCC a draft Bush Fire Risk Management Plan (BFRMP).

A BFRMP is a strategic document that identifies community assets at risk and sets out a five-year program of coordinated multi-agency treatments to reduce the risk of bush fire to the assets. Treatments may include such things as hazard reduction burning, grazing, community education, fire trail maintenance and establishing community fireguard groups.

Annual programs to implement the treatments identified in this plan will be undertaken by the relevant land managers and fire fighting authorities.

In exercising its functions under the *Rural Fires Act 1997*, including the preparation of a draft bush fire risk management plan, the Chifley BFMC is required to have regard to the principles of ecologically sustainable development (ESD).

This document and the accompanying maps together form the BFRMP for the Chifley BFMC area.

This BFRMP has been prepared by the Chifley BFMC and covers both public and private lands. This BFRMP must be reviewed and updated within each successive five-year period from the constitution of the BFMC.

The BFCC recognises that climate change has the potential to increase bush fire risk. The risk assessment process applied in this BFRMP is based on current climatic conditions. The BFCC will monitor information on climate change and will modify the process when necessary.

1.2 Aim and Objectives

The **aim** of this BFRMP is to minimise the risk of adverse impact of bush fires on life, property and the environment.

The **objectives** of this BFRMP are to:

- reduce the number of human-induced bush fire ignitions that cause damage to life, property and the environment;
- manage fuel to reduce the rate of spread and intensity of bush fires, while minimising environmental/ecological impacts;
- reduce the community's vulnerability to bush fires by improving its preparedness; and
- effectively contain fires with a potential to cause damage to life, property and the environment.

1.3 Description of the Chifley BFMC Area

1.3.1 Location and land tenure

The Chifley BFMC area is located in the Central West of New South Wales and includes the local government areas (LGA) of Bathurst Regional Council and Oberon Council.

The area covered by the Chifley BFMC is 735,459ha, comprised of 372,800ha within Bathurst Regional Council area and 362,659ha within Oberon Council Area. The Chifley BFMC area includes the land tenures as outlined in Table 1.1.

Land Manager	Bathurst LGA (ha)	Oberon LGA (ha)	Total (ha)	% of BFMC area
National Parks & Wildlife Service	15,619	102,764	111,559	16.1%
Forestry Corporation of NSW	12,261	52,629	64,890	8.8%
Crown Lands	21,200	9,709	30,909	4.2%
Local Government	2,875	175	3,050	0.4%
Private	315,260	197,382	519,466	69.7%
All Other	5,585	0	5,585	0.8%
Total	372,800	362,659	735,459	100%

Table 1.1 Land Tenure

1.3.2 Climate and bush fire season

Bathurst

The typical average climate in the Bathurst Regional Council LGA of the Chifley BFMC area is cool temperatures with rainfall generally occurring in the summer.

Prevailing weather conditions associated with the bush fire season in the Bathurst Regional Council LGA of the Chifley BFMC area are associated with the westerly wind patterns experienced during the months of November, December and January. The majority of serious bush fire events occur from this period until the cooler temperatures of autumn are experienced.

Extended periods of lower than normal rainfall can extend the bush fire season with serious fires late in the season under very dry summer conditions.

Oberon

The typical/average climate in the Oberon LGA of the Chifley BFMC area is subject to cool to very cold and moist tablelands climate with maximum temperatures decreasing and rainfall increasing with elevation above sea level. The rainfall is generally evenly spread throughout the year with the lowest rainfalls recorded in autumn.

The consequence of the interaction of these weather features is that Oberon LGA has been relatively free of severe extended fire events and a shortened fire season typically occurring in January/February.

Extremes of drought have, occasionally, seen fires occurring as early as September and as late as March/April.

1.3.3 Population and demographic information

The population of the Chifley BFMC area is 48,594 comprising of 43,554 in Bathurst Regional Council LGA and 5,040 within Oberon Council LGA. The major population centres within Bathurst Regional Council LGA are Bathurst, Eglinton, Hill End, O'Connell, Perthville, Raglan, Rockley, The Lagoon, Trunkey, Wattle Flat/Sofala and Yetholme.

Within Oberon Council LGA the major population centres are Oberon, Black Springs, Burruga and Jenolan. The Chifley BFMC area predominantly consists of rural communities and isolated rural properties.

The following data has been sourced from the Australian Bureau of Statistics using the 2016 Census Data.

	Bathurst	Oberon	Total	
Total Persons	41,300	5,294	46,594	% of Total
Indigenous Persons (comprising Aboriginal & Torres Strait Islanders)	2,244	179	2,423	5.2%
Male	20,695	2,751	23,446	50.3%
Female	20,605	2,543	23,148	49.7%
Age Groups				
<i>Median Age</i>	<i>37</i>	<i>45</i>	<i>38</i>	
0 - 14	8,116	926	9,042	19%
15 - 24	6,128	672	6,800	15%
25 - 34	5,166	485	5,651	12%
35 - 44	4,881	561	5,442	12%
45 - 54	5,240	759	5,999	13%
55 - 64	4,997	725	5,722	12%
65 & over	6,772	1,173	7,945	17%
Families	10,135	1,348	11,483	
Average Children per Family	1.9	1.9		
Family Composition				
Couple family without children	3,885	632	4,517	39.3%
Couple family with children	4,308	505	4,813	41.9%
One parent family	1,811	206	2,017	17.6%
Other family	131	5	136	1.2%

	Bathurst	Oberon	Total	% of Total
Country of Birth				
<i>Top 4 responses</i>				
Australia	34,538	4,173	38,711	83.1%
England	802	138	940	2.0%
New Zealand	436	93	529	1.1%
India	172	5	177	0.4%
Language Spoken at Home				
<i>Top 3 responses</i>				
English Only	35,906	4,462	40,368	86.6%
Mandarin	108	5	113	0.2%
Arabic	101	4	105	0.2%
Employment				
<i>Reported being in labour force, aged 15 years and over</i>				
Working Full-Time	11,165	1,419	12,584	58.0%
Working Part-Time	5,923	694	6617	30.5%
Away from work	1,079	134	1213	5.6%
Unemployed	1,162	137	1299	6.0%
Total Available Labour Force	19,329	2,384	21,713	
Travel to Work				
By car as driver or passenger	13,915	1,593	15,508	71.4%
Walked only	685	95	1,038	3.6%
Truck	209	54	362	1.2%
Public Transport	129	12	164	0.6%
Worked from Home	838	206	1,044	4.8%
Dwellings	14,415	1,873	16,288	
Owned outright	4,691	769	5,460	33.5%
Owned with mortgage	4,854	596	5,450	33.5%
Rented	4,420	439	4,859	29.8%
Other tenure type / not stated	450	69	519	3.2%

Table 1.2 Demographic Profile

1.3.4 History of bush fire frequency and ignition cause

The Chifley BFMC area has, on average, 150 bush/grass fires per year, of which an average of 9 per year may be considered to be major fires (>20ha).

The bush fire seasons of 2013/2014 and 2019/2020 consisted of significant bush fire activities within the Chifley BFMC area. Areas directly affected by the 2013/2014 fires were from a multitude of fire events, which affected communities including Jaunter, Copperhannia, Trunkey Creek, Triangle Flat, Redbank, Winburndale, Wattle Flat and Dog Rocks, primarily within the Bathurst Regional Council area.

The Green Wattle Creek fire of 2019/2020 was the primary contributor to more than 158,000ha of burnt area during the fire season. The Green Wattle Creek fire directly affected many communities within the Oberon Council area, including Jenolan, Kanangra, Jaunter, Gingkin, Jerrong, Edith and Duckmaloi.

The impacts of these fires have been considered in the development of this BFRMP.

The main sources of ignition in the Chifley BFMC area are:

- Lightning activity (mainly associated with late spring and early summer);
- Illegal / careless burning activities by private land owners/occupiers;
- Most commonly in grasslands and forested areas adjacent to villages.
- Escaped fires from legal burning activities by private land owners/occupiers;
- Campfires;
- Farm Machinery

Chapter 2. Identifying and Assessing the Bush Fire Risk

2.1 Process

The Australia/New Zealand Standard *AS/NZS 4360: 2004 Risk Management* was used as the basis for the risk assessment process. See Figure 2.1 for the steps involved. For a detailed description of the process undertaken see the Bush Fire Risk Management Planning Guidelines for Bush Fire Management Committees on the RFS website: www.rfs.nsw.gov.au.

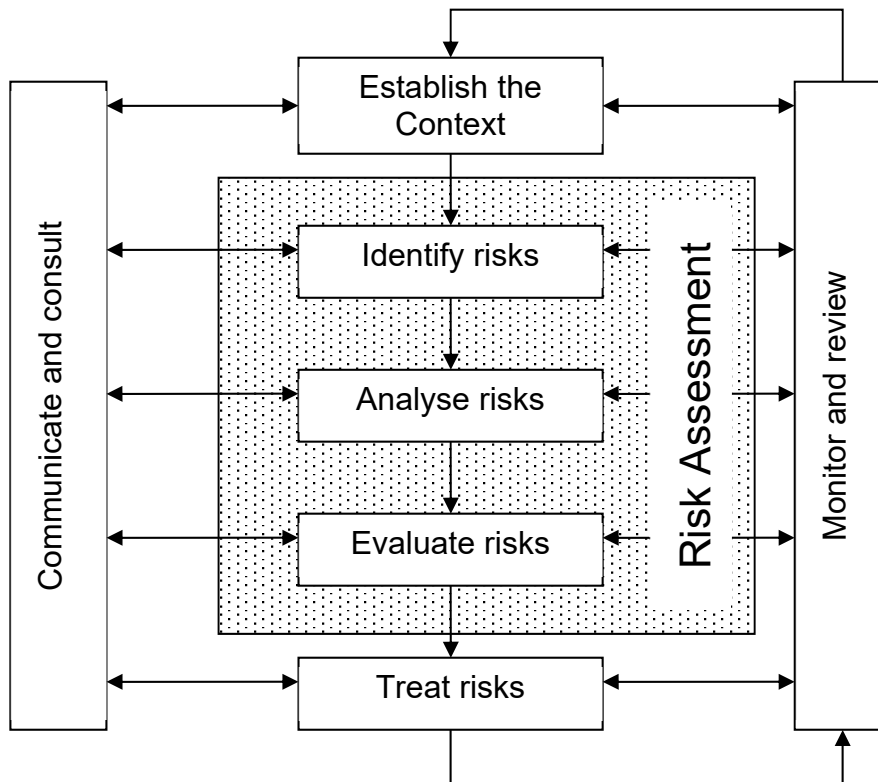


Figure 2.1 Overview of the risk assessment process

2.2 Communication and Consultation

Community participation is an integral part of risk management. The Community Participation Strategy involved developing and implementing a process to address the needs, issues and concerns of stakeholders within the BFMC area in regards to the BFRMP. See *Appendix 1* for the Community Participation Strategy used by the Chifley BFMC in preparing this BFRMP.

2.3 Identifying the Bush Fire Risk

Identifying the level of bush fire risk firstly involved identifying important community assets within the Chifley BFMC area that are considered to be at risk from bush fire, and then assessing the likelihood and consequence ratings.

2.3.1 Assets

BFMC members and the community, including NSW RFS volunteers, have identified assets within the Chifley BFMC that they believed were at risk of bush fire.

The assets were divided into four asset types:

Human settlement

- Residential areas including urban bushland interface areas and rural properties;
- Special Fire Protection areas including schools, hospitals, nursing homes, and tourist facilities; and
- Other human settlement areas including commercial and industrial areas where distinct from major towns.
- Neighbourhood Safer Place (NSP) is defined by the *Rural Fires Act 1997* as *land or a building designated as a neighbourhood safer place under section 62C*. NSPs provide a place of last resort for people during a bush fire. All designated NSP locations for NSW are available at www.rfs.nsw.gov.au.

Economic

- Agricultural; e.g. major silos, regional saleyards, cropping/grazing land;
- Commercial/industrial e.g. major industries, waste treatment plants, sawmills;
- Infrastructure e.g. large power lines, gas and oil pipelines, railway lines, electricity substations, communication facilities;
- Tourist and recreational e.g. tourist sites and facilities, resorts, retreats;
- Mines;
- Commercial forests e.g. pine plantations, eucalypt plantations and commercial native forests; and
- Drinking water catchments.

Environmental

- Threatened species, populations and ecological communities and Ramsar wetlands;
- Locally important species and ecological communities, such as species and ecological communities especially sensitive to fire.

Cultural

- Aboriginal significance – Aboriginal places and items of significance;
- Non-indigenous heritage – places and items arising from the early occupation of NSW by European or other non-indigenous settlers; and
- Other cultural assets – community halls, clubs and recreational facilities.

See *Appendix 2* for the full list of assets identified in the Chifley BFMC area.

See *Appendix 4* (Maps 1-2) for the location of assets to be treated under this BFRMP

2.3.2 Assessing the Bush Fire Risk - Consequence

Once the assets were identified, the consequence of a bush fire impacting on these assets was assessed.

See *Appendix 2* for the consequence ratings assigned to each asset identified in the Chifley BFMC area.

The different asset types had different assessment processes used to determine the consequence. These processes are identified below.

Human settlement

A potential fire behaviour model using vegetation type, slope and separation distance was used to produce a threat rating for human settlement assets. The vulnerability of the asset to a bush fire was also assessed and a rating assigned. These ratings were then used to assess the consequence of a bush fire impacting upon a human settlement asset.

Special Fire Protection (SFP) assets were considered inherently more vulnerable to bush fire due to mobility capacity, knowledge or other issues relating to their inhabitants, (e.g. the elderly, infirm, children or tourists) and therefore stricter requirements for vulnerability assessment and rating were applied. Due to circumstances surrounding NSPs and their use during a bush fire, stricter requirements for vulnerability assessment and rating will also apply to these assets.

Economic

The level of economic impact e.g. local, regional or state, as well as the economic recovery costs (how long and complicated a financial recovery will be) of the asset were identified. These ratings were used to assess the consequence of a bush fire impacting upon an economic asset.

Environmental

Environmental assets with known minimum fire threshold were assessed to determine if they were at risk of a bush fire within the 5 year life of the BFRMP using fire history data. Those environmental assets which were within or above the fire threshold were not assessed in the BFRMP, as the negative impact of a fire within the 5 year period was determined as being low and may even be of benefit to the asset and surrounding habitat.

The vulnerability of an environmental asset was determined by its conservation status and its geographic extent (distribution across the landscape). Vulnerability and potential impact of bush fire were used to assess the consequence of a bush fire impacting upon an environmental asset.

Cultural

For non-indigenous heritage, Aboriginal and other cultural assets a potential fire behaviour model using fuel load, slope and proximity was used to produce a threat rating. The physical vulnerability of the asset to a bush fire was also assessed. These ratings were then used to assess the consequence of a bush fire impacting upon a cultural asset.

2.3.3 Assessing the Bush Fire Risk - Likelihood

For all asset types the likelihood of a bush fire occurring was assessed. This involves considering fire history, including ignition cause and patterns, known fire paths, access, containment potential and potential fire run (size of the vegetated area). See *Appendix 2* for the likelihood ratings assigned to each asset identified in the Chifley BFMC area.

2.3.4 Identifying the level of risk

The consequence and likelihood ratings were then used to identify the level of risk. See *Appendix 3* for the risk ratings assigned to each asset identified in the Chifley BFMC area.

2.3.5 Evaluating the Bush Fire Risk

Once the risk ratings for each asset were identified, they were evaluated to:

- a) confirm that risk levels identified in the risk analysis process are appropriate and reflect the relative seriousness of the bush fire risk;
- b) identify which assets require treatments; and
- c) identify treatment priorities.

2.3.6 Prioritising Treatments

No organisation has limitless resources to deal with adverse risk. It is therefore necessary to define priorities. The bush fire risk ratings determined were used to prioritise the risk treatments, i.e. areas of extreme risk were considered first for treatment, then very high, then high then medium then low. It was also necessary to prioritise within the risk levels i.e. determining which of the high risks was the most serious. This was done on the basis of the consequence and likelihood ratings.

2.3.7 Risk Acceptability

Risks below a certain level were assessed as not requiring treatment within the life of this plan. This is due to a combination of risk priority and capacity to undertake the works. Within the Chifley BFMC area the level of acceptability is medium. Areas of medium or low risk are likely to be managed by routine procedures and so do not require a specific application of resources.

Within the Chifley BFMC area there will be extreme and very high risk to some cultural and environmental assets. The Chifley BFMC will not be applying specific treatments to these assets as they are contained within the fire management plans of the agencies upon which tenure they are located and/or the reserve fire management plans of National Parks & Wildlife Service (NPWS). These fire management plans include measures, where practical, to reduce the risk of impact of bush fire. These measures are considerate of the nature of the asset and only treatments consistent with maintaining the asset will be implemented.

The protection and management of these assets will be taken into account during the planning of hazard reduction treatments for the area. These assets are listed within in the Asset Register (*Appendix 2*) and are not spatially referenced on the maps (*Appendix 4*) due to the sensitive locations and to aid in the protection of the assets. The BFMC wide treatments, in addition to scheduled treatments such as prescribed burns and fire trail maintenance, are also likely to contribute toward the reduction of risk to these assets.

All NSPs for a BFMC area will require ongoing treatment by the applicable land owner to ensure that the asset remains viable as a place of last resort for people during a bush fire. Therefore, all NSP assets are allocated specific treatments in this Plan, regardless of the level of bush fire risk identified and the risk acceptability nominated by the Chifley BFMC.

Chapter 3. Treating the Risk

3.1 Bush Fire Management Zones

Bush Fire Management Zones were identified within the Chifley BFMC area and mapped (see maps 1-2). These zones identify the fire management intent for a specific area. See Table 3.1 for descriptions of the zones and their purposes. The four categories of Bush Fire Management Zones are:

- Asset Protection Zone (APZ);
- Strategic Fire Advantage Zone (SFAZ);
- Land Management Zone (LMZ); and
- Fire Exclusion Zone (FEZ).

Some of these zones (usually Land Management Zones) may be further classified within this category by the land manager, e.g. LMZ - Management Zone (NPWS).

Zone	Purpose	Suppression Objective(s)	Zone characteristics
Asset Protection Zone	To protect human life, property and highly valued public assets and values.	To enable the safe use of Direct Attack suppression strategies within the zone. To minimise bush fire impacts on undefended assets.	As per RFS document <i>Standards for Asset Protection Zones</i> .
Strategic Fire Advantage Zone	To provide strategic areas of fire protection advantage which will reduce the speed and intensity of bush fires, and reduce the potential for spot fire development; To aid containment of wildfires to existing management boundaries.	To improve the likelihood and safe use of: Parallel Attack suppression strategies within the zone. and/or Indirect Attack (back burning) in high to very high fire weather conditions within the zone. To reduce the likelihood of: Crown fire development within the zone. and/or Spot fire ignition potential from the zone	Zone width related to suppression objectives and dependent upon: <ul style="list-style-type: none"> • Topography • Aspect • Spotting propensity • Location of adjacent firebreaks • Mosaic pattern of treatment Assess Overall Fuel Hazard (OFH) once vegetation communities reach minimum fire thresholds within this plan. Management practices should aim to achieve mosaic fuel reduction patterns so that the majority of the SFAZ has an OFH of less than high.
Land Management Zone	To meet relevant land management objectives in areas where APZs or SFAZs are not appropriate.	As per the land management and fire protection objectives of the responsible land management agency. To reduce the likelihood of spread of fires. To undertake mosaic burning	As appropriate to achieve land management e.g. heritage and/or fire protection e.g. broad scale mosaic burning objectives.
Fire Exclusion Zone	To exclude bush fires.	N/A	Variable dependant on size of fire sensitive area requiring protection.

Table 3.1 Bush Fire Management Zones: Purpose, objectives and characteristics

NB: OFH refers to the Overall Fuel Hazard Guide as described in the document published by (Dept. of Sustainability and Environment 3rd ed. 1999 & NPWS version); State-wide procedures for assessment of fuel hazard will be developed in conjunction with the BFCC.

Important Note: All areas within the Chifley BFMC area that are not mapped or described as APZs or SFAZs are considered as LMZs.

*For the purpose of the Bush Fire Environmental Assessment Code:

1. Plantations that are approved under the *Plantations & Reafforestation Act 1999* after closure of the public exhibition period for this BFRMP are considered to be identified in this BFRMP; and
2. Retained vegetation within the aforementioned plantations is considered to be a Strategic Fire Advantage Zone identified in the text of this BFRMP as long as it meets the suppression objectives for SFAZs included in the BFRMP, and is not mapped or otherwise described as a Fire Exclusion Zone in the BFRMP.

3.2 BFMC Wide Treatments

BFMC wide treatments are activities which reduce the overall bush fire risk within the BFMC area and are undertaken on an ongoing basis as part of normal business. These treatments are not linked to specific assets in the BFRMP, rather they are applied across all or part of the BFMC area as designated by legislation or agency policy. BFMC wide treatments include the following:

- **Reviewing the bush fire prone land map**

These maps identify bush fire prone land and are used to trigger whether a development application is assessed using *Planning for Bush Fire Protection*¹.

- **Ensuring developments in bush fire prone land comply with Planning for Bush Fire Protection**

This assessment process requires new applications for development to include bush fire protection measures.

- **Using the Local Environment Plan/s (LEPs) to control developments in areas with a bush fire risk**

LEPs can be used to exclude development in extreme bush fire risk areas or where bush fire protection measures cannot be incorporated.

- **Varying the standard bush fire danger period as required**

In years where the weather is particularly adverse the bush fire danger period may be brought in early or extended. This is assessed every year by the BFMC.

- **Requiring permits during the bush fire danger period**

In the bush fire danger period a fire safety permit is required to light a fire in the open. Permits specify conditions such as fire fighting equipment that must be on site, or restrict burns based on weather conditions.

¹ NSW Rural Fire Service 2019 *Planning for Bush Fire Protection: A guide for councils, planners, fire authorities and developers*.

- **Prosecution of arsonists/offenders**

Under the *Rural Fires Act 1997* persons may be prosecuted for breaching the conditions on a fire permit, lighting a fire during a Total Fire Ban, allowing fire to escape their property, or other breaches of the Act or *Rural Fires Regulation 2013*.

- **Investigation of bush fire cause**

All bush fires which do not have a known cause are investigated to identify how they started.

- **Normal fire suppression activities**

Responding to bush fire is a normal business activity for the fire fighting authorities.

- **Assessing and managing compliance with strategic fire fighting resource allocation provisions**

Strategic fire fighting resource allocation provisions is the process used to identify the number of stations, brigades and appliances required in an area, and considers members, training, assets and hazards.

- **Preparation of a S52 Operations Coordination Plan**

The Operations Coordination Plan is prepared biennially and sets out how coordinated fire fighting will occur. It includes specific operational restrictions on fire fighting techniques in certain areas, where fires will be managed from, and how agencies involved can communicate during operations.

- **Fire Management Plans or Plans of Management**

Some land management agencies have developed fire management plans or plans of management with specific fire or fuel management strategies, for example a Forestry Corporation of NSW Regional Fuel Management Plan, a NPWS Reserve Fire Management Strategy. These publicly exhibited plans form the basis for operational fire planning on public parks, reserves and forests.

The following National Parks and Nature Reserves across the Chifley BFMC area have specific fire management plans:

- Abercrombie Karst Conservation Reserve
- Abercrombie River National Park
- Abercrombie River State Conservation Area
- Blue Mountains National Park
- Copperhanna Nature Reserve
- Eusdale Nature Reserve
- Hill End Historic Site
- Jenolan Karst Conservation Reserve
- Kanangra-Boyd National Park
- Wambool Nature Reserve
- Wiarborough Nature Reserve
- Winburndale Nature Reserve

- **Bush Fire Hazard Complaints**

If someone is concerned about possible bush fire hazards on a neighbouring property or any other land, then this can be reported to the RFS Commissioner or their local RFS Fire Control Centre. The complaint will be investigated and may result in a notice being issued to the landowner or manager to reduce the hazard.

3.3 Asset Specific Treatments

There are five broad strategy groups available to treat the bush fire risk to assets identified in the BFRMP.

The types of asset specific treatments in each strategy group used in the Chifley BFMC area are listed below. A full list of the treatment strategies in the Chifley BFMC area are in *Appendix 4*.

Strategy	Targeted treatments used in the Chifley BFMC area
Ignition Management	<ul style="list-style-type: none"> • Activate 'no burn' plans in specific locations • Undertake fire tower and patrol activities • Implement Arson & Illegal/Careless fires Prevention Plan
Hazard Reduction	<ul style="list-style-type: none"> • Create, inspect and maintain Asset Protection Zone • Inspect and maintain SFAZ as required • Undertake burning within Strategic Fire Advantage Zone • Undertake mechanical works within Strategic Fire Advantage Zone • Undertake mosaic burning within Land Management Zone • Undertake burning in line with Fire Management Plans or Plans of Management for specific locations • Maintain fuels in accordance with NSP guidelines
Community Education	<ul style="list-style-type: none"> • Undertake Community Engagement Activity • Provision of bush fire information to tourist information centres and other locations • Installation of bush fire safety signage at camping areas
Property Planning	<ul style="list-style-type: none"> • Implement Community Protection Plan • Develop / implement / maintain site specific preparedness plans • Implement private plans of management
Preparedness	<ul style="list-style-type: none"> • Inspect and maintain fire trails • Inspect and maintain fire water points and fire breaks • Liaise with NSW Rural Fire Service

Table 3.2 Asset specific treatments used in the Chifley BFMC area

3.4 Fire Thresholds

The vegetation in the Chifley BFMC area was classified into fire threshold categories (Table 3.3).

Vegetation formation	Minimum SFAZ Threshold (years)	Minimum LMZ Threshold (years)	Maximum Threshold (years)	Notes
Rainforest	NA	NA	NA	Fire should be avoided.
Alpine complex	NA	NA	NA	Fire should be avoided.
Wet Sclerophyll forest (shrubby subformation)	25	30	60	Crown fires should be avoided in the lower end of the interval range.
Wet Sclerophyll forest (grassy subformation)	10	15	50	Crown fires should be avoided in the lower end of the interval range.
Grassy woodland	5	8	40	Minimum interval of 10 years should apply in the southern Tablelands area. Occasional intervals greater than 15 years may be desirable.
Grassland	2	3	10	Occasional intervals greater than 7 years should be included in coastal areas. There was insufficient data to give a maximum interval; available evidence indicates maximum intervals should be approximately 10 years.
Dry sclerophyll forest (shrub/grass subformation)	5	8	50	Occasional intervals greater than 25 years may be desirable.
Dry sclerophyll forest (shrub subformation)	7	10	30	Occasional intervals greater than 25 years may be desirable.
Heathlands	7	10	30	Occasional intervals greater than 20 years may be desirable.
Freshwater wetlands	6	10	35	Occasional intervals greater than 30 years may be desirable.
Forested wetlands	7	10	35	Some intervals greater than 20 years may be desirable.
Saline wetlands	NA	NA	NA	Fire should be avoided.
Semi-arid woodlands (grassy subformation)	6	9	No max	Not enough data for a maximum fire interval.
Semi-arid woodlands (shrubby subformation)	10	15	No Max	Not enough data for a maximum fire interval.
Arid shrublands (chenopod subformation)	NA	NA	NA	Fire should be avoided.
Arid shrublands (acacia subformation)	10	15	No Max	Not enough data for a maximum fire interval.

Table 3.3 Fire Thresholds for Vegetation Categories

3.5 Annual Works Programs

The land management agencies and fire fighting authorities responsible for implementing the treatments identified in this plan will include those treatments in their annual works programs detailing how, when, and where the required activities will be undertaken.

3.6 Implementation

When the treatments identified in this BFRMP are implemented there are a number of issues that need to be considered by the responsible agency including environmental assessments and approvals, smoke management and prescribed burn plans.

Chapter 4. Performance Monitoring and Reviewing

4.1 Review

This BFRMP must be reviewed and updated within each successive five-year period from the constitution of the BFMC. The Chifley BFMC will also review this plan as necessary to account for any changes in context or risk. This may be triggered by a range of circumstances, including but not limited to:

- changes to the BFMC area, organisational responsibilities or legislation; or
- changes to the bush fire risk in the area; or
- following a major fire event.

4.2 Monitoring

The BFMC is required to monitor progress towards the completion of treatment works listed in the BFRMP, and the timeliness of the works.

4.3 Reporting

The BFMC is required to report annually to the BFCC on its progress in implementing the bush fire risk management activities identified in this plan.

4.4 Performance Measurements

State wide performance measurements which are linked to the BFRMP have been identified by the BFCC. All BFMCs must use these to monitor and report on their success in reducing the bush fire risk in their BFMC area.

Appendices

Appendix 1: Community Participation Strategy

Detailed Community Participation Strategy

Appendix 2: Asset Register

Detailed list from bush fire risk register of all assets assessed.

9 x Pages

Appendix 3: Treatment Register

Detailed list from bush fire risk register of all treatments assigned to assets.

7 x Pages

Appendix 4: Maps

2 x BFRMP Asset Location and Bush Fire Management Zone maps

Appendix 5: Neighbourhood Safer Places

A list of the approved Neighbourhood Safer Places within the BFMC area.

Appendix 1 Community Participation Strategy

Chifley BFMC Area Bush Fire Risk Management Plan

Community Participation Strategy

Background

The Bush Fire Management Committee (BFMC) has the responsibility to prepare a Bush Fire Risk Management Plan (BFRMP) for their area and for this plan to be reviewed every 5 years in accordance with the *Rural Fires Act 1997*.

Aims of Community Participation Strategy

The community participation strategy is an essential part of the BFRMP process and should be prepared early on in the process. Communication and consultation with the community is an essential tool in ensuring the success of the BFRMP. The process of the Community Participation Strategy is to address the needs, issues and concerns of stakeholders within the BFMC area in regards to bush fire.

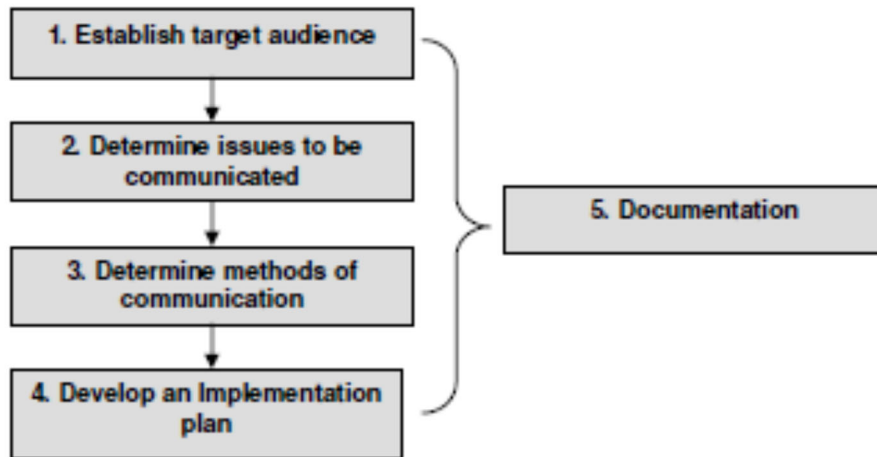
The purpose of a community participation strategy is to:

- Ensure that specific and targeted communication occurs between the BFMC and the community and other stakeholders throughout the development of a BFRMP;
- Ensure prominent stakeholders do not make judgements on the acceptability of a risk based on their own perception;
- Provide greater opportunity for local brigades, land holders and other stakeholders to have input into the bush fire risk management process;
- Ensure that the community's concerns and perceptions of bush fire risk are identified, understood, documented and addressed;
- Improve community confidence in bush fire risk management across the landscape and provide the community with a sense of ownership of the BFRMP; and
- Educate the community regarding bush fire risk management in the area and their responsibilities, so that they can contribute towards risk reduction.

Steps of Developing a Community Participation Strategy

The BFMC acknowledges that any strategy for community participation on the BFRMP will require communications to be dependent upon the targeted audience and have consideration of the community's availability and resources.

Following are the steps that have been used as the basis of the community participation strategy.



Targeted Audiences

BFMC Agencies: It will be the responsibility for the agency representatives on the BFMC to take the information back to their agency and communicate the plan to their agency.

Residential communities: Includes those that live or have assets within the area, particularly those that may be affected by bush fires.

Community Groups: A range of community groups will be invited to review the BFRMP and to provide feedback.

NSW RFS Brigades and Group Officers: As brigades play an integral role within the community and bush fire management, brigades have an opportunity to provide feedback and to inform others within their communities.

Chifley/Lithgow Team Community Engagement Committee: This is group of volunteers representing local brigades and those that are actively involved in community engagement within the Chifley BFMC area.

Information to be communicated

The key information items to be communicated are:

- What is a Bush Fire Risk Management Plan
- Process of developing a Bush Fire Risk Management Plan
- How it may affect the community
- Identification of risk in the area;
- Understanding treatment strategies
- Public exhibition

Methods of communications

It is identified that there needs to be various forms of consultation in order to address the different target audiences as well as the type of information that may be appropriate for a particular audience.

The methods and targeted audiences that will be deployed to engage the public on the Bush Fire Risk Management Plan, are as follows:

- Local Newspaper:
 - Advertisements and special articles placed in local newspapers distributed to areas affected by the Bush Fire Risk Management Plan;
 - Include specific reference to locations where the BFRMP is on display
- Brigade and Group Officer Information:
 - A copy of the Bush Fire Risk Management Plan to be provided to all Rural Fire Brigades and Group Officers within the BFMC area
 - NSW RFS members are encouraged to review and provide prior to the public display period
- Chifley/Lithgow Team Community Engagement Committee
 - BFRMP to be presented at a convened meeting to the members of the Committee for review
- Public Displays: Information to be provided on display at the following strategic locations;
 - Council Offices
 - Bathurst Regional Council
 - Oberon Council
 - Public Libraries
 - Bathurst Library
 - Oberon Library
 - Chifley Fire Control Centre
 - Oberon Fire Control Centre

Documentation

Refer to Community Participation Communications Plan.

Community Participation Feedback

Submissions / feedback in writing will be invited from the community to provide information for the Bush Fire Management Committee on any particular issues in relation to the Bush Fire Risk Management for further consideration by that committee.

Feedback on the Plan will be encouraged; however will be considered on relevance and in the broader terms of the Plan.

Community Participation Communications Plan

Date	Targeted Audience	Method of Communication	Method of Notification	Key Message / Purpose	Resources	Responsibility
4 Feb 2020	BFMC	Meeting	Email	Stakeholder Contribution	Current BFRMP	BFMC Members
9 June 2020	BFMC	Meeting	Email	Draft BFRMP, Asset & Treatment Listing Review	Draft BFRMP	NSW RFS
10 June 2020	Bathurst and Oberon Senior Management Teams	Printed Copy	Email & Hard Copy	Stakeholder Contribution	Draft BFRMP, Maps & Presentation	NSW RFS
10 June 2020	Chifley Zone Rural Fire Brigades	Printed Copy	Email & Hard Copy	Stakeholder Contribution	Draft BFRMP, Maps & Presentation	NSW RFS
11 August 2020	BFMC	Meeting	Email	Review for Approval of Draft to go on display & submitted to Area Command for review	Draft BFRMP, Maps & Presentation	NSW RFS
18 Aug – 29 Sept 2020	General Public	Display	Print advertising	Feedback to BFMC to prepare final BFRMP	BFRMP & Maps	BFMC Members
15 Sept 2020	Chifley/Lithgow Team Community Engagement Committee	Meeting	Email	Stakeholder Contribution	BFRMP, Maps & Presentation	NSW RFS
13 Oct 2020	BFMC	Meeting	Email & Hard Copy	Complete review of submissions received and action accordingly	Annex I, Appendix 6	BFMC

Appendix Table 1.1 Community Participation Plan

Appendix 2: Asset Register

Priority	Asset Name	Asset Location	Asset Type	Asset Sub Type	LGA	Display Area	Map Ref No.	Likelihood	Consequence	Risk	Treatment No.
1A	Electricity Infrastructure	Various	Economic	Infrastructure	Bathurst	undefined	0	Almost certain	Catastrophic	Extreme	1
1B	Aboriginal Sites of High Vulnerability	Various	Cultural	Aboriginal Significance	Bathurst		0	Likely	Catastrophic	Extreme	2;3
1C	Brewongle - Rural Properties	Brewongle	Human Settlement	Residential	Bathurst	Bathurst	4	Almost certain	Major	Extreme	4;5;6
	Gemalla - Rural Properties	Gemalla	Human Settlement	Residential	Bathurst	Bathurst	3	Almost certain	Major	Extreme	20;21
	Yetholme - Rural Properties	Yetholme	Human Settlement	Residential	Bathurst	Bathurst	2	Almost certain	Major	Extreme	15;16;5;14
	Sunny Corner State Forest	Sunny Corner	Economic	Commercial Forest	Bathurst	Bathurst	1	Almost certain	Major	Extreme	7;8;9;10;11;12;13
	Private Pine Plantations	Various	Economic	Commercial Forest	Oberon		0	Almost certain	Major	Extreme	19
	Ardeidae		Environment	Endangered	Oberon		0	Almost certain	Major	Extreme	17;18
	Cyperaceae		Environment	Endangered	Oberon		0	Almost certain	Major	Extreme	17;18
2A	Aboriginal Sites of Moderate Vulnerability	Various	Cultural	Aboriginal Significance	Bathurst		0	Likely	Major	Very High	37;38
	Bald Ridge - Rural Properties	Bald Ridge	Human Settlement	Residential	Oberon	Oberon	14	Likely	Major	Very High	29;30;50
	Billywillinga - Rural Properties	Billywillinga	Human Settlement	Residential	Bathurst	Bathurst	15	Likely	Major	Very High	31;29;30
	Chatham Valley - Rural Properties	Chatham Valley	Human Settlement	Residential	Oberon	Oberon	29	Likely	Major	Very High	23;24;26
	Colo - Rural Properties	Colo	Human Settlement	Residential	Bathurst	Bathurst	16	Likely	Major	Very High	29;32
	Copperhannia - Rural Properties	Copperhannia	Human Settlement	Residential	Bathurst	Bathurst	17	Likely	Major	Very High	33;29;22
	Curragh - Rural Properties	Curragh	Human Settlement	Residential	Bathurst	Bathurst	31	Likely	Major	Very High	47;48;49
	Essington - Rural Properties	Essington	Human Settlement	Residential	Oberon	Oberon	18	Likely	Major	Very High	29;6
	Jaunter - Rural Properties	Jaunter	Human Settlement	Residential	Oberon	Oberon	5	Likely	Major	Very High	23;24
	Kirkconnell - Rural Properties	Kirkconnell	Human Settlement	Residential	Bathurst	Bathurst	30	Likely	Major	Very High	47;48;49
	Mount Rankin - Rural Properties	Mount Rankin	Human Settlement	Residential	Bathurst	Bathurst	19	Likely	Major	Very High	29;30
	Peel - Rural Properties	Peel	Human Settlement	Residential	Bathurst	Bathurst	20	Likely	Major	Very High	34;29
	Rockley Mount - Rural Properties	Rockley Mount	Human Settlement	Residential	Bathurst	Bathurst	21	Likely	Major	Very High	29;35
Sunny Corner - Rural Properties	Sunny Corner	Human Settlement	Residential	Bathurst	Bathurst	28	Likely	Major	Very High	6;5;14	

Priority	Asset Name	Asset Location	Asset Type	Asset Sub Type	LGA	Display Area	Map Ref No.	Likelihood	Consequence	Risk	Treatment No.
2A	Turondale - Rural Properties	Turondale	Human Settlement	Residential	Bathurst	Bathurst	6	Likely	Major	Very High	23;25;14
	Watton - Rural Properties	Watton	Human Settlement	Residential	Bathurst	Bathurst	22	Likely	Major	Very High	29;36
	Wisemans Creek - Rural Properties	Wisemans Creek	Human Settlement	Residential	Oberon	Oberon	23	Likely	Major	Very High	29;30
	Yetholme - Village	Yetholme	Human Settlement	Residential	Bathurst	Bathurst	13	Likely	Major	Very High	15;16;27;28
	Blenheim State Forest	Oberon	Economic	Commercial Forest	Oberon	Oberon	24	Likely	Major	Very High	41;42;43;44;45;46
	Dog Rocks State Forest	Dog Rocks	Economic	Commercial Forest	Oberon	Oberon	25	Likely	Major	Very High	41;42;43;44;45;46
	Essington State Forest	Essington	Economic	Commercial Forest	Oberon	Oberon	26	Likely	Major	Very High	41;42;43;44;45;46
	Gurnang State Forest	Gurnang	Economic	Commercial Forest	Oberon	Oberon	7	Likely	Major	Very High	7;8;9;10;11;13
	Jenolan State Forest	Jenolan	Economic	Commercial Forest	Oberon	Oberon	8	Likely	Major	Very High	7;8;9;10;11;13
	Lowes Mount State Forest	Oberon	Economic	Commercial Forest	Oberon	Oberon	9	Likely	Major	Very High	7;8;9;10;11;13
	Mount David State Forest	Mount David	Economic	Commercial Forest	Oberon	Oberon	10	Likely	Major	Very High	7;8;9;10;11;13
	Pennsylvania State Forest	Copperhannia	Economic	Commercial Forest	Bathurst	Bathurst	12	Likely	Major	Very High	7;8;9;10;11;13
	Vulcan State Forest	Shooters Hill	Economic	Commercial Forest	Oberon	Oberon	11	Likely	Major	Very High	7;8;9;10;11;12;13
	Vittoria State Forest	Vittoria	Economic	Commercial Forest	Bathurst	Bathurst	27	Likely	Major	Very High	41;42;43;46;44;45
	Apiaceae		Environment	Endangered	Oberon		0	Likely	Major	Very High	39;40
	Burhinidae		Environment	Endangered	Bathurst		0	Likely	Major	Very High	39;40
	Castniidae		Environment	Endangered	Oberon		0	Likely	Major	Very High	39;40
	Endangered Ecological Community		Environment	Endangered	Bathurst		0	Likely	Major	Very High	39;40
	Fabaceae (Faboideae) 1		Environment	Endangered	Oberon		0	Likely	Major	Very High	39;40
	Fabaceae (Faboideae) 2		Environment	Endangered	Bathurst		0	Likely	Major	Very High	39;40
	Gentianaceae		Environment	Endangered	Oberon		0	Likely	Major	Very High	39;40
	Gyrostemonaceae		Environment	Endangered	Oberon		0	Likely	Major	Very High	39;40
Hylidae 1		Environment	Endangered	Bathurst		0	Likely	Major	Very High	39;40	
Hylidae 2		Environment	Endangered	Oberon		0	Likely	Major	Very High	39;40	

Priority	Asset Name	Asset Location	Asset Type	Asset Sub Type	LGA	Display Area	Map Ref No.	Likelihood	Consequence	Risk	Treatment No.
2A	Hylidae 3		Environment	Endangered	Oberon		0	Likely	Major	Very High	39;40
	Lycaenidae		Environment	Endangered	Bathurst		0	Likely	Major	Very High	39;40
	Megapodiidae		Environment	Endangered	Bathurst		0	Likely	Major	Very High	39;40
	Myobatrachidae		Environment	Endangered	Oberon		0	Likely	Major	Very High	39;40
	Orchidaceae 1		Environment	Endangered	Bathurst		0	Likely	Major	Very High	39;40
	Orchidaceae 2		Environment	Endangered	Oberon		0	Likely	Major	Very High	39;40
	Orchidaceae 3		Environment	Endangered	Oberon		0	Likely	Major	Very High	39;40
	Petaluridae		Environment	Endangered	Oberon		0	Likely	Major	Very High	39;40
	Proteaceae		Environment	Endangered	Bathurst		0	Likely	Major	Very High	39;40
	Rhamnaceae 1		Environment	Endangered	Oberon		0	Likely	Major	Very High	39;40
	Rhamnaceae 2		Environment	Endangered	Oberon		0	Likely	Major	Very High	39;40
	Rutaceae		Environment	Endangered	Oberon		0	Likely	Major	Very High	39;40
	Scincidae		Environment	Endangered	Oberon		0	Likely	Major	Very High	39;40
	Scrophulariaceae 1		Environment	Endangered	Bathurst		0	Likely	Major	Very High	39;40
Scrophulariaceae 2		Environment	Endangered	Bathurst		0	Likely	Major	Very High	39;40	
2B	Recreational Camping Areas	Various	Human Settlement	Other	Bathurst	undefined	0	Possible	Catastrophic	Very High	51;52;53
2C	Telecommunications Infrastructure	Various	Economic	Infrastructure	Bathurst	undefined	0	Almost certain	Moderate	Very High	57
	Burruga - Rural Properties	Burruga	Human Settlement	Residential	Oberon	Oberon	33	Almost certain	Moderate	Very High	54;4;5
	Caloola - Rural Properties	Caloola	Human Settlement	Residential	Bathurst	Bathurst	34	Almost certain	Moderate	Very High	54;4;5
	Duramana - Rural Properties	Duramana	Human Settlement	Residential	Bathurst	Bathurst	35	Almost certain	Moderate	Very High	55;56
	Forest Grove Estate	Forest Grove	Human Settlement	Residential	Bathurst	Bathurst	36	Almost certain	Moderate	Very High	55;56
	Freemantle - Rural Properties	Freemantle	Human Settlement	Residential	Bathurst	Bathurst	32	Almost certain	Moderate	Very High	47;48;49
	Glanmire - Rural Properties	Glanmire	Human Settlement	Residential	Bathurst	Bathurst	39	Almost certain	Moderate	Very High	47;49
	Laffing Waters - Rural Properties	Laffing Waters	Human Settlement	Residential	Bathurst	Bathurst	40	Almost certain	Moderate	Very High	47;48;49

Priority	Asset Name	Asset Location	Asset Type	Asset Sub Type	LGA	Display Area	Map Ref No.	Likelihood	Consequence	Risk	Treatment No.
2C	Perthville - Rural Properties	Perthville	Human Settlement	Residential	Bathurst	Bathurst	37	Almost certain	Moderate	Very High	47;49
	White Rock - Rural Properties	White Rock	Human Settlement	Residential	Bathurst	Bathurst	38	Almost certain	Moderate	Very High	47;49
3A	Aboriginal Sites of Low Vulnerability	Various	Cultural	Aboriginal Significance	Bathurst		0	Likely	Moderate	High	69;70
	Arkstone - Rural Properties	Arkstone	Human Settlement	Residential	Oberon	Oberon	48	Likely	Moderate	High	65;66
	Ballyroe - Rural Properties	Ballyroe	Human Settlement	Residential	Oberon	Oberon	49	Likely	Moderate	High	65;66;60
	Black Springs - Rural Properties	Black Springs	Human Settlement	Residential	Oberon	Oberon	50	Likely	Moderate	High	65;68
	Bruinbun - Rural Properties	Bruinbun	Human Settlement	Residential	Bathurst	Bathurst	51	Likely	Moderate	High	65
	Clear Creek - Rural Properties	Peel	Human Settlement	Residential	Bathurst	Bathurst	52	Likely	Moderate	High	65
	Crudine - Rural Properties	Crudine	Human Settlement	Residential	Bathurst	Bathurst	66	Likely	Moderate	High	29
	Dog Rocks - Rural Properties	Dog Rocks	Human Settlement	Residential	Oberon	Oberon	43	Likely	Moderate	High	29
	Fitzgeralds Valley - Rural Properties	Fitzgeralds Valley	Human Settlement	Residential	Bathurst	Bathurst	61	Likely	Moderate	High	47;48;49
	Georges Plains - Rural Properties	Georges Plains	Human Settlement	Residential	Bathurst	Bathurst	62	Likely	Moderate	High	47;49
	Gingkin - Rural Properties	Gingkin	Human Settlement	Residential	Oberon	Oberon	53	Likely	Moderate	High	65;66
	Isabella - Rural Properties	Isabella	Human Settlement	Residential	Oberon	Oberon	67	Likely	Moderate	High	29;30
	Jenolan - Rural Properties	Jenolan	Human Settlement	Residential	Oberon	Oberon	42	Likely	Moderate	High	23;24;14
	Jeremy - Rural Properties	Jeremy	Human Settlement	Residential	Oberon	Oberon	41	Likely	Moderate	High	4;5;6;71
	Killongbutta - Rural Properties	Killongbutta	Human Settlement	Residential	Bathurst	Bathurst	68	Likely	Moderate	High	29;30
	Millah Murrah - Rural Properties	Millah Murrah	Human Settlement	Residential	Bathurst	Bathurst	69	Likely	Moderate	High	29;30
	Napoleon Reef	Napoleon Reef	Human Settlement	Residential	Bathurst	Bathurst	44	Likely	Moderate	High	59;60;63
	Paling Yards (Bathurst) - Rural Properties	Paling Yards (Bathurst)	Human Settlement	Residential	Bathurst	Bathurst	70	Likely	Moderate	High	29;30
	Paling Yards (Oberon) - Rural Properties	Paling Yards (Oberon)	Human Settlement	Residential	Oberon	Oberon	54	Likely	Moderate	High	65;29
	Rockley - Rural Properties	Rockley	Human Settlement	Residential	Bathurst	Bathurst	60	Likely	Moderate	High	47;49
Sallys Flat - Rural Properties	Sallys Flat	Human Settlement	Residential	Bathurst	Bathurst	45	Likely	Moderate	High	29	
Shooters Hill - Rural Properties	Shooters Hill	Human Settlement	Residential	Oberon	Oberon	55	Likely	Moderate	High	65	

Priority	Asset Name	Asset Location	Asset Type	Asset Sub Type	LGA	Display Area	Map Ref No.	Likelihood	Consequence	Risk	Treatment No.
3A	Sofala - Rural Properties	Sofala	Human Settlement	Residential	Bathurst	Bathurst	47	Likely	Moderate	High	29;61;62
	Tambaroora - Rural Properties	Tambaroora	Human Settlement	Residential	Bathurst	Bathurst	71	Likely	Moderate	High	29;30
	Tannas Mount - Rural Properties	Tannas Mount	Human Settlement	Residential	Bathurst	Bathurst	72	Likely	Moderate	High	29
	The Lagoon - Rural Properties	The Lagoon	Human Settlement	Residential	Bathurst	Bathurst	63	Likely	Moderate	High	47;49
	Triangle Flat - Rural Properties	Triangle Flat	Human Settlement	Residential	Bathurst	Bathurst	73	Likely	Moderate	High	29;30
	Trunkey Creek - Rural Properties	Trunkey Creek	Human Settlement	Residential	Bathurst	Bathurst	56	Likely	Moderate	High	65;67;68
	Upper Turon - Rural Properties	Upper Turon	Human Settlement	Residential	Bathurst	Bathurst	74	Likely	Moderate	High	29;30
	Wambool - Rural Properties	Wambool	Human Settlement	Residential	Bathurst	Bathurst	64	Likely	Moderate	High	29;65
	Wattle Flat - Rural Properties	Wattle Flat	Human Settlement	Residential	Bathurst	Bathurst	46	Likely	Moderate	High	29;30;63
	Wimbledon - Rural Properties	Wimbledon	Human Settlement	Residential	Bathurst	Bathurst	65	Likely	Moderate	High	47;49
	Trunkey Creek Public School	Carlyle St, Trunkey Creek	Human Settlement	Special Fire Protection	Bathurst	Bathurst	75	Likely	Moderate	High	33;58
	Burruga Fire Lookout and Communication Tower	Isabella	Economic	Infrastructure	Oberon	Oberon	59	Likely	Moderate	High	64
	Mount Ryan Communication Tower	Mount David State Forest	Economic	Infrastructure	Oberon	Oberon	57	Likely	Moderate	High	64
Shooters Hill Fire Lookout and Communication Tower	Vulcan State Forest	Economic	Infrastructure	Oberon	Oberon	58	Likely	Moderate	High	64	
3B	Hill End - Rural Properties	Hill End	Human Settlement	Residential	Bathurst	Bathurst	76	Possible	Major	High	29;33;72;73
	Mount Haven Estate	Meadow Flat	Human Settlement	Residential	Bathurst	Bathurst	77	Possible	Major	High	58;29;33
	Mount Panorama - Rural Properties	Mount Panorama	Human Settlement	Residential	Bathurst	Bathurst	78	Possible	Major	High	74;29
3C	Jenolan Caves Tourist Facilities	Jenolan	Human Settlement	Special Fire Protection	Oberon	Oberon	79	Unlikely	Catastrophic	High	23;75;26
4	Dunkeld - Rural Properties	Dunkeld	Human Settlement	Residential	Bathurst	Bathurst	94	Possible	Moderate	Medium	
	Evans Plains - Rural Properties	Evans Plains	Human Settlement	Residential	Bathurst	Bathurst	95	Possible	Moderate	Medium	
	Gormans Hill - Rural Properties	Gormans Hill	Human Settlement	Residential	Bathurst	Bathurst	103	Possible	Moderate	Medium	
	Gowan - Rural Properties	Gowan	Human Settlement	Residential	Bathurst	Bathurst	104	Possible	Moderate	Medium	
	Hazलगrove - Rural Properties	Hazलगrove	Human Settlement	Residential	Oberon	Oberon	84	Possible	Moderate	Medium	
	Jerrong - Rural Properties	Jerrong	Human Settlement	Residential	Oberon	Oberon	85	Unlikely	Major	Medium	

Priority	Asset Name	Asset Location	Asset Type	Asset Sub Type	LGA	Display Area	Map Ref No.	Likelihood	Consequence	Risk	Treatment No.
4	Kelso - Village	Kelso	Human Settlement	Residential	Bathurst	Bathurst	105	Possible	Moderate	Medium	
	Limekilns - Rural Properties	Limekilns	Human Settlement	Residential	Bathurst	Bathurst	96	Possible	Moderate	Medium	
	Locksley - Rural Properties	Locksley	Human Settlement	Residential	Bathurst	Bathurst	107	Likely	Minor	Medium	
	Mount David - Rural Properties	Mount David	Human Settlement	Residential	Oberon	Oberon	86	Possible	Moderate	Medium	
	O'Connell - Rural Properties	O'Connell	Human Settlement	Residential	Oberon	Oberon	97	Possible	Moderate	Medium	
	Orton Park - Rural Properties	Orton Park	Human Settlement	Residential	Bathurst	Bathurst	108	Possible	Moderate	Medium	
	Raglan - Village	Raglan	Human Settlement	Residential	Bathurst	Bathurst	109	Possible	Moderate	Medium	
	Robin Hill - Rural Properties	Robin Hill	Human Settlement	Residential	Bathurst	Bathurst	98	Possible	Moderate	Medium	
	Rock Forest - Rural Properties	Rock Forest	Human Settlement	Residential	Bathurst	Bathurst	87	Possible	Moderate	Medium	
	Rockley - Village	Rockley	Human Settlement	Residential	Bathurst	Bathurst	88	Possible	Moderate	Medium	
	Sunny Corner - Village	Sunny Corner	Human Settlement	Residential	Bathurst	Bathurst	81	Unlikely	Major	Medium	
	Tarana - Rural Properties	Tarana	Human Settlement	Residential	Oberon	Oberon	90	Possible	Moderate	Medium	
	The Rocks - Rural Properties	The Rocks	Human Settlement	Residential	Bathurst	Bathurst	89	Possible	Moderate	Medium	
	Trunkey Creek - Village	Trunkey Creek	Human Settlement	Residential	Bathurst	Bathurst	80	Unlikely	Major	Medium	
	Walang - Rural Properties	Walang	Human Settlement	Residential	Bathurst	Bathurst	110	Possible	Moderate	Medium	
	White Rock - Blue Ridge Estate	White Rock	Human Settlement	Residential	Bathurst	Bathurst	99	Possible	Moderate	Medium	
	Wiagdon - Rural Properties	Wiagdon	Human Settlement	Residential	Bathurst	Bathurst	93	Possible	Moderate	Medium	
	Abercrombie Caves Tourist Facilities	Abercrombie River	Human Settlement	Special Fire Protection	Bathurst	Bathurst	82	Unlikely	Major	Medium	
	Bathurst TAFE College	Panorama Ave, Bathurst	Human Settlement	Special Fire Protection	Bathurst	Bathurst	118	Unlikely	Major	Medium	
	Charles Sturt University	Village Drive, Bathurst	Human Settlement	Special Fire Protection	Bathurst	Bathurst	117	Possible	Moderate	Medium	
Eglinton Public School	Eglinton	Human Settlement	Special Fire Protection	Bathurst	Bathurst	112	Possible	Moderate	Medium		
Heritage Park - Bathurst Sheep and Cattle Drome	Kelso	Human Settlement	Special Fire Protection	Bathurst	Bathurst	100	Possible	Moderate	Medium		
Hill End Visitor Centre	Hospital Lane, Hill End	Human Settlement	Special Fire Protection	Bathurst	Bathurst	119	Likely	Minor	Medium		
Kirkconnell Correctional Centre	Kirkconnell	Human Settlement	Special Fire Protection	Bathurst	Bathurst	106	Unlikely	Major	Medium		

Priority	Asset Name	Asset Location	Asset Type	Asset Sub Type	LGA	Display Area	Map Ref No.	Likelihood	Consequence	Risk	Treatment No.
4	O'Connell Public School	Blacks Mill Lane, O'Connell	Human Settlement	Special Fire Protection	Bathurst	Bathurst	113	Possible	Moderate	Medium	
	Perthville Public School	Church St, Perthville	Human Settlement	Special Fire Protection	Bathurst	Bathurst	111	Possible	Moderate	Medium	
	Scots All Saints College	O'Connell Rd, Kelso	Human Settlement	Special Fire Protection	Bathurst	Bathurst	114	Possible	Moderate	Medium	
	Oberon Abattoir	Hazeltown Rd, Oberon	Economic	Commercial	Bathurst	Oberon	116	Possible	Moderate	Medium	
	Omya Quarry	Cow Flat	Economic	Commercial	Bathurst	Bathurst	92	Likely	Minor	Medium	
	Pipers Airfield	Freemantle Rd, Eglinton	Economic	Commercial	Bathurst	Bathurst	115	Possible	Moderate	Medium	
	Crudine Ridge Wind Farm	Hill End Rd, Crudine	Economic	Infrastructure	Bathurst	Bathurst	120	Unlikely	Major	Medium	
	Falls Hill Communication Tower	Oberon	Economic	Infrastructure	Oberon	Oberon	91	Unlikely	Major	Medium	
	Mount Panorama Communication Tower - GRN	Mount Panorama	Economic	Infrastructure	Bathurst	Bathurst	102	Possible	Moderate	Medium	
	Mount Panorama Communication Tower - Paging	Mount Panorama	Economic	Infrastructure	Bathurst	Bathurst	101	Possible	Moderate	Medium	
	Rail Infrastructure	Various	Economic	Infrastructure	Bathurst	undefined	0	Unlikely	Major	Medium	
	Sunny Corner Fire Lookout and Communication Tower	Sunny Corner	Economic	Infrastructure	Bathurst	Bathurst	83	Possible	Moderate	Medium	
Orchidaceae 4		Environment	Endangered	Oberon		0	Unlikely	Major	Medium		
NA	Black Springs Sports Ground NSP	Black Springs	Human Settlement	Other	Oberon	Oberon	129	Unlikely	Moderate	Low	78
	Burruga Sports Ground NSP	Burruga	Human Settlement	Other	Oberon	Oberon	130	Unlikely	Moderate	Low	78
	Hill End Community Hall NSP	Hill End	Human Settlement	Other	Bathurst	Bathurst	124	Unlikely	Moderate	Low	76
	Hill End Sports Ground NSP	Hill End	Human Settlement	Other	Bathurst	Bathurst	125	Unlikely	Moderate	Low	76
	Oberon Sports Ground NSP	Oberon	Human Settlement	Other	Oberon	Oberon	131	Unlikely	Minor	Low	78
	Rockley Public School NSP	Rockley	Human Settlement	Other	Bathurst	Bathurst	132	Unlikely	Moderate	Low	79
	Sofala Community Hall NSP	Sofala	Human Settlement	Other	Bathurst	Bathurst	133	Unlikely	Moderate	Low	78
	Trunkey Creek Community Hall NSP	Trunkey Creek	Human Settlement	Other	Bathurst	Bathurst	134	Unlikely	Moderate	Low	78
	Wattle Flat Public School NSP	Wattle Flat	Human Settlement	Other	Bathurst	Bathurst	126	Unlikely	Moderate	Low	77
	Arkell - Rural Properties	Arkell	Human Settlement	Residential	Bathurst	Bathurst	135	Unlikely	Moderate	Low	
Bathampton - Rural Properties	Bathampton	Human Settlement	Residential	Bathurst	Bathurst	158	Unlikely	Moderate	Low		

Priority	Asset Name	Asset Location	Asset Type	Asset Sub Type	LGA	Display Area	Map Ref No.	Likelihood	Consequence	Risk	Treatment No.
NA	Bathurst - Township	Bathurst Township & Suburbs	Human Settlement	Residential	Bathurst	Bathurst	159	Unlikely	Minor	Low	
	Burruga - Village	Burruga	Human Settlement	Residential	Oberon	Oberon	136	Unlikely	Moderate	Low	
	Charlton - Rural Properties	Charlton	Human Settlement	Residential	Bathurst	Bathurst	137	Unlikely	Moderate	Low	
	Cow Flat - Rural Properties	Cow Flat	Human Settlement	Residential	Bathurst	Bathurst	160	Unlikely	Moderate	Low	
	Duckmaloi - Rural Properties	Duckmaloi	Human Settlement	Residential	Oberon	Oberon	127	Unlikely	Moderate	Low	
	Edith - Rural Properties	Edith	Human Settlement	Residential	Oberon	Oberon	138	Unlikely	Moderate	Low	
	Eglinton - Village	Eglinton	Human Settlement	Residential	Bathurst	Bathurst	161	Possible	Minor	Low	
	Fitzgeralds Mount - Rural Properties	Fitzgeralds Mount	Human Settlement	Residential	Bathurst	Bathurst	162	Unlikely	Moderate	Low	
	Fosters Valley - Rural Properties	Fosters Valley	Human Settlement	Residential	Bathurst	Bathurst	139	Unlikely	Moderate	Low	
	Georges Plains - Village	Georges Plains	Human Settlement	Residential	Bathurst	Bathurst	140	Unlikely	Moderate	Low	
	Gilmandyke - Rural Properties	Gilmandyke	Human Settlement	Residential	Bathurst	Oberon	141	Unlikely	Moderate	Low	
	Hill End - Village	Hill End	Human Settlement	Residential	Bathurst	Bathurst	123	Unlikely	Moderate	Low	
	Judds Creek - Rural Properties	Judds Creek	Human Settlement	Residential	Oberon	Oberon	163	Unlikely	Moderate	Low	
	Mayfield - Rural Properties	Mayfield	Human Settlement	Residential	Oberon	Oberon	142	Unlikely	Moderate	Low	
	Meadow Flat - Rural Properties	Meadow Flat	Human Settlement	Residential	Bathurst	Bathurst	143	Unlikely	Moderate	Low	
	Mount David - Village	Mount David	Human Settlement	Residential	Oberon	Oberon	144	Unlikely	Moderate	Low	
	Mount Olive - Rural Properties	Mount Olive	Human Settlement	Residential	Oberon	Oberon	164	Unlikely	Moderate	Low	
	Mozart - Rural Properties	Mozart	Human Settlement	Residential	Oberon	Oberon	165	Unlikely	Moderate	Low	
	Norway - Rural Properties	Norway	Human Settlement	Residential	Oberon	Oberon	145	Unlikely	Moderate	Low	
	Oberon Township	Oberon	Human Settlement	Residential	Oberon	Oberon	166	Possible	Minor	Low	
O'Connell - Village	O'Connell	Human Settlement	Residential	Oberon	Oberon	146	Unlikely	Moderate	Low		
Peel - Village	Peel	Human Settlement	Residential	Bathurst	Bathurst	121	Unlikely	Moderate	Low		
Perthville - Village	Perthville	Human Settlement	Residential	Bathurst	Bathurst	147	Unlikely	Moderate	Low		
Porters Retreat - Rural Properties	Porters Retreat	Human Settlement	Residential	Oberon	Oberon	148	Unlikely	Moderate	Low		

Priority	Asset Name	Asset Location	Asset Type	Asset Sub Type	LGA	Display Area	Map Ref No.	Likelihood	Consequence	Risk	Treatment No.
NA	Sofala - Village	Sofala	Human Settlement	Residential	Bathurst	Bathurst	128	Unlikely	Moderate	Low	
	Stewarts Mount - Rural Properties	Stewarts Mount	Human Settlement	Residential	Bathurst	Bathurst	167	Possible	Minor	Low	
	The Lagoon - Village	The Lagoon	Human Settlement	Residential	Bathurst	Bathurst	149	Unlikely	Moderate	Low	
	The Meadows - Rural Properties	The Meadows	Human Settlement	Residential	Oberon	Oberon	168	Unlikely	Moderate	Low	
	Titania Estate - Rural Properties	Back Creek	Human Settlement	Residential	Oberon	Oberon	150	Unlikely	Moderate	Low	
	Vittoria - Rural Properties	Vittoria	Human Settlement	Residential	Bathurst	Bathurst	169	Possible	Minor	Low	
	Wattle Flat - Village	Wattle Flat	Human Settlement	Residential	Bathurst	Bathurst	122	Unlikely	Moderate	Low	
	Barcoo's Farmstay	Trunkey Rd, Perthville	Human Settlement	Special Fire Protection	Bathurst	Bathurst	176	Possible	Minor	Low	
	Bathurst South Public School	South Bathurst	Human Settlement	Special Fire Protection	Bathurst	Bathurst	170	Unlikely	Moderate	Low	
	Black Springs Public School	Avoca St, Black Springs	Human Settlement	Special Fire Protection	Oberon	Oberon	173	Unlikely	Moderate	Low	
	Hill End Public School	Tambaroora St, Hill End	Human Settlement	Special Fire Protection	Bathurst	Bathurst	175	Unlikely	Moderate	Low	
	Newhaven Park	Georges Plains	Human Settlement	Special Fire Protection	Bathurst	Bathurst	151	Unlikely	Moderate	Low	
	Oberon Correctional Facility	Gurnang	Human Settlement	Special Fire Protection	Oberon	Oberon	152	Unlikely	Moderate	Low	
	Sofala Public School	Turon Terrace, Sofala	Human Settlement	Special Fire Protection	Bathurst	Bathurst	171	Unlikely	Moderate	Low	
	St Philomena's Catholic Primary School	Lloyds Rd, South Bathurst	Human Settlement	Special Fire Protection	Bathurst	Bathurst	174	Unlikely	Moderate	Low	
	Wattle Flat Public School	Sofala Rd, Wattle Flat	Human Settlement	Special Fire Protection	Bathurst	Bathurst	172	Unlikely	Moderate	Low	
	Australian United Timbers	Burruga	Economic	Commercial	Oberon	Oberon	153	Unlikely	Moderate	Low	
	Chifley Dam	The Lagoon	Economic	Drinking Water Catchment	Bathurst	Bathurst	154	Unlikely	Moderate	Low	
	Oberon Dam	Oberon	Economic	Drinking Water Catchment	Oberon	Oberon	157	Unlikely	Moderate	Low	
	Monkey Hill Communication Tower	Sallys Flat	Economic	Infrastructure	Bathurst	Bathurst	155	Unlikely	Moderate	Low	
Mount Defiance Communication Tower	Paling Yards	Economic	Infrastructure	Oberon	Oberon	156	Unlikely	Moderate	Low		
Waste Transfer Facilities	Various	Economic	Infrastructure	Bathurst	undefined	0	Unlikely	Minor	Low		
Hill End Gold - Site Infrastructure	Hill End	Economic	Mines	Bathurst	undefined	0	Unlikely	Moderate	Low		

Appendix 3: Treatment Register

Priority (Risk Rating)	Asset ID	Asset Name	Asset Location	Class	Subclass	Strategy	Treatment ID	Action Description	Comment	Responsible Agencies	Other RA	Support Agencies	Other SA	2021	2122	2223	2324	2425		
1A (Extreme)	0	Electricity Infrastructure	Various	Economic	Infrastructure	Hazard Reduction	1	Inspect & maintain fire breaks	In line with industry guidelines & practice notes	Other	Transgrid	Other	Endeavour Energy, Essential Energy, Origin Energy	[2021]	[2122]	[2223]	[2324]	[2425]		
1B (Extreme)	0	Aboriginal Sites of High Vulnerability	Various	Cultural Heritage	Aboriginal Significance	Hazard Reduction	3	Undertake burning in SFAZs and LMZs		NPWS;RFS;DPI;FCNSW				[2021]	[2122]	[2223]	[2324]	[2425]		
						Ignition Management	2	Implement Prevention Plan	Implement arson and illegal/careless fires prevention plan	RFS		LGA;NPWS;FCNSW;Police	[2021]	[2122]	[2223]	[2324]	[2425]			
1C (Extreme)	0	Ardeidae	Various	Environmental	Endangered	Hazard Reduction	18	Undertake burning in SFAZs and LMZs		NPWS;RFS;DPI;FCNSW				[2021]	[2122]	[2223]	[2324]	[2425]		
						Ignition Management	17	Implement Prevention Plan	Implement arson and illegal/careless fires prevention plan	RFS		NPWS;FCNSW;Police	[2021]	[2122]	[2223]	[2324]	[2425]			
		Cyperaceae	Various	Environmental	Endangered	Hazard Reduction	18	Undertake burning in SFAZs and LMZs		NPWS;RFS;DPI;FCNSW					[2021]	[2122]	[2223]	[2324]	[2425]	
						Ignition Management	17	Implement Prevention Plan	Implement arson and illegal/careless fires prevention plan	RFS		NPWS;FCNSW;Police	[2021]	[2122]	[2223]	[2324]	[2425]			
		Private Pine Plantations	Various	Economic	Commercial Forests	Hazard Reduction	19	Implement Oberon Forest Contractors Plan of MGT	Implement Oberon Forest Contractors Plan of Management for Private Pine Plantations in: Ballyroe Burruga Edith Essington Gilmandyke Isabella Jenolan Jeremy	Private			RFS			[2021]	[2122]	[2223]	[2324]	[2425]
						Community Education	7	Make Fact Sheets and Pamphlets Available	Recreation Use of Forests information and Solid Fuel Fire Ban information available through Visitor Information Centres	FCNSW		LGA;RFS	[2021]	[2122]	[2223]	[2324]	[2425]			
	Hazard Reduction					8	Undertake burning in LMZs and SFAZs	In line with FCNSW Softwood Plantation Division Fuel Management Plan	FCNSW			[2021]	[2122]	[2223]	[2324]	[2425]				
	Ignition Management					9	Activate No Burn Plan	Activate solid fuel fire ban in State Forests during Bush Fire Danger Period	FCNSW		RFS;Police	[2021]	[2122]	[2223]	[2324]	[2425]				
						12	Man fire towers and patrol area as required	Man fire towers and patrol area as stated in Chifley BFMC Operations Coordination Plan.	FCNSW			[2021]	[2122]	[2223]	[2324]	[2425]				
	Preparedness					11	Inspect and Maintain Strategic Fire Trails	Maintain a road network within Plantations in line with FCNSW Strategic Plan of Management	FCNSW			[2021]	[2122]	[2223]	[2324]	[2425]				
	2	Yetholme - Rural Properties	Yetholme	Human Settlement	Residential	Community Education	15	Undertake community engagement activity		RFS					[2021]	[2122]	[2223]	[2324]	[2425]	
						Hazard Reduction	5	Inspect and Maintain APZ		Private		RFS	[2021]	[2122]	[2223]	[2324]	[2425]			
							14	Inspect and Maintain SFAZ as Required		RFS			[2021]	[2122]	[2223]	[2324]	[2425]			
						Preparedness	16	Inspect and maintain Fire Trails		RFS		NPWS	[2021]	[2122]	[2223]	[2324]	[2425]			
						Community Education	20	Undertake community engagement activity		RFS			[2021]	[2122]	[2223]	[2324]	[2425]			
						Preparedness	21	Inspect and maintain Fire Trails		NPWS;RFS			[2021]	[2122]	[2223]	[2324]	[2425]			
	3	Gemalla - Rural Properties	Gemalla	Human Settlement	Residential	Community Education	4	Undertake community engagement activity		RFS					[2021]	[2122]	[2223]	[2324]	[2425]	
						Hazard Reduction	5	Inspect and Maintain APZ		Private		RFS	[2021]	[2122]	[2223]	[2324]	[2425]			
Preparedness						6	Inspect and maintain Fire Trails		RFS			[2021]	[2122]	[2223]	[2324]	[2425]				
Community Education						4	Undertake community engagement activity		RFS			[2021]	[2122]	[2223]	[2324]	[2425]				
Hazard Reduction						5	Inspect and Maintain APZ		Private		RFS	[2021]	[2122]	[2223]	[2324]	[2425]				
Preparedness						6	Inspect and maintain Fire Trails		RFS			[2021]	[2122]	[2223]	[2324]	[2425]				
2A (Very High)	0	Aboriginal Sites of Moderate Vulnerability	Various	Cultural Heritage	Aboriginal Significance	Hazard Reduction	38	Undertake burning in SFAZs and LMZs		NPWS;RFS;DPI;FCNSW				[2021]	[2122]	[2223]	[2324]	[2425]		
						Ignition Management	37	Implement Prevention Plan	Implement arson and illegal/careless fires prevention plan	RFS		NPWS;FCNSW;Police	[2021]	[2122]	[2223]	[2324]	[2425]			
		Apiaceae	Various	Environmental	Endangered	Hazard Reduction	40	Undertake burning in SFAZs and LMZs		NPWS;RFS;DPI;FCNSW					[2021]	[2122]	[2223]	[2324]	[2425]	
						Ignition Management	39	Implement Prevention Plan	Implement arson and illegal/careless fires prevention plan	RFS		NPWS;FCNSW;Police	[2021]	[2122]	[2223]	[2324]	[2425]			
		Burhinidae	Various	Environmental	Endangered	Hazard Reduction	40	Undertake burning in SFAZs and LMZs		NPWS;RFS;DPI;FCNSW					[2021]	[2122]	[2223]	[2324]	[2425]	
						Ignition Management	39	Implement Prevention Plan	Implement arson and illegal/careless fires prevention plan	RFS		NPWS;FCNSW;Police	[2021]	[2122]	[2223]	[2324]	[2425]			
		Castniidae	Various	Environmental	Endangered	Hazard Reduction	40	Undertake burning in SFAZs and LMZs		NPWS;RFS;DPI;FCNSW					[2021]	[2122]	[2223]	[2324]	[2425]	
						Ignition Management	39	Implement Prevention Plan	Implement arson and illegal/careless fires prevention plan	RFS		NPWS;FCNSW;Police	[2021]	[2122]	[2223]	[2324]	[2425]			
		Endangered Ecological Community	Various	Environmental	Endangered	Hazard Reduction	40	Undertake burning in SFAZs and LMZs		NPWS;RFS;DPI;FCNSW						[2021]	[2122]	[2223]	[2324]	[2425]
						Ignition Management	39	Implement Prevention Plan	Implement arson and illegal/careless fires prevention plan	RFS		NPWS;FCNSW;Police	[2021]	[2122]	[2223]	[2324]	[2425]			
		Fabaceae (Faboideae) 1	Various	Environmental	Endangered	Hazard Reduction	40	Undertake burning in SFAZs and LMZs		NPWS;RFS;DPI;FCNSW						[2021]	[2122]	[2223]	[2324]	[2425]
						Ignition Management	39	Implement Prevention Plan	Implement arson and illegal/careless fires prevention plan	RFS		NPWS;FCNSW;Police	[2021]	[2122]	[2223]	[2324]	[2425]			
		Fabaceae (Faboideae) 2	Various	Environmental	Endangered	Hazard Reduction	40	Undertake burning in SFAZs and LMZs		NPWS;RFS;DPI;FCNSW						[2021]	[2122]	[2223]	[2324]	[2425]
						Ignition Management	39	Implement Prevention Plan	Implement arson and illegal/careless fires prevention plan	RFS		NPWS;FCNSW;Police	[2021]	[2122]	[2223]	[2324]	[2425]			
		Gentianaceae	Various	Environmental	Endangered	Hazard Reduction	40	Undertake burning in SFAZs and LMZs		NPWS;RFS;DPI;FCNSW						[2021]	[2122]	[2223]	[2324]	[2425]
						Ignition Management	39	Implement Prevention Plan	Implement arson and illegal/careless fires prevention plan	RFS		NPWS;FCNSW;Police	[2021]	[2122]	[2223]	[2324]	[2425]			
		Gyrostemonaceae	Various	Environmental	Endangered	Hazard Reduction	40	Undertake burning in SFAZs and LMZs		NPWS;RFS;DPI;FCNSW						[2021]	[2122]	[2223]	[2324]	[2425]
						Ignition Management	39	Implement Prevention Plan	Implement arson and illegal/careless fires prevention plan	RFS		NPWS;FCNSW;Police	[2021]	[2122]	[2223]	[2324]	[2425]			
Hylidae 1	Various	Environmental	Endangered	Hazard Reduction	40	Undertake burning in SFAZs and LMZs		NPWS;RFS;DPI;FCNSW						[2021]	[2122]	[2223]	[2324]	[2425]		
				Ignition Management	39	Implement Prevention Plan	Implement arson and illegal/careless fires prevention plan	RFS		NPWS;FCNSW;Police	[2021]	[2122]	[2223]	[2324]	[2425]					
Hylidae 2	Various	Environmental	Endangered	Hazard Reduction	40	Undertake burning in SFAZs and LMZs		NPWS;RFS;DPI;FCNSW						[2021]	[2122]	[2223]	[2324]	[2425]		
				Ignition Management	39	Implement Prevention Plan	Implement arson and illegal/careless fires prevention plan	RFS		NPWS;FCNSW;Police	[2021]	[2122]	[2223]	[2324]	[2425]					
Hylidae 3	Various	Environmental	Endangered	Hazard Reduction	40	Undertake burning in SFAZs and LMZs		NPWS;RFS;DPI;FCNSW						[2021]	[2122]	[2223]	[2324]	[2425]		
				Ignition Management	39	Implement Prevention Plan	Implement arson and illegal/careless fires prevention plan	RFS		NPWS;FCNSW;Police	[2021]	[2122]	[2223]	[2324]	[2425]					
Lycaenidae	Various	Environmental	Endangered	Hazard Reduction	40	Undertake burning in SFAZs and LMZs		NPWS;RFS;DPI;FCNSW						[2021]	[2122]	[2223]	[2324]	[2425]		
				Ignition Management	39	Implement Prevention Plan	Implement arson and illegal/careless fires prevention plan	RFS		NPWS;FCNSW;Police	[2021]	[2122]	[2223]	[2324]	[2425]					
Megapodiidae	Various	Environmental	Endangered	Hazard Reduction	40	Undertake burning in SFAZs and LMZs		NPWS;RFS;DPI;FCNSW						[2021]	[2122]	[2223]	[2324]	[2425]		
				Ignition Management	39	Implement Prevention Plan	Implement arson and illegal/careless fires prevention plan	RFS		NPWS;FCNSW;Police	[2021]	[2122]	[2223]	[2324]	[2425]					
Myobatrachidae	Various	Environmental	Endangered	Hazard Reduction	40	Undertake burning in SFAZs and LMZs		NPWS;RFS;DPI;FCNSW						[2021]	[2122]	[2223]	[2324]	[2425]		
				Ignition Management	39	Implement Prevention Plan	Implement arson and illegal/careless fires prevention plan	RFS		NPWS;FCNSW;Police	[2021]	[2122]	[2223]	[2324]	[2425]					

Priority (Risk Rating)	Asset ID	Asset Name	Asset Location	Class	Subclass	Strategy	Treatment ID	Action Description	Comment	Responsible Agencies	Other RA	Support Agencies	Other SA	2021	2122	2223	2324	2425		
2A (Very High)	0	Orchidaceae 1	Various	Environmental	Endangered	Hazard Reduction	40	Undertake burning in SFAZs and LMZs		NPWS;RFS,DPI;FCNSW				[2021]	[2122]	[2223]	[2324]	[2425]		
						Ignition Management	39	Implement Prevention Plan	Implement arson and illegal/careless fires prevention plan	RFS		NPWS;FCNSW;Police		[2021]	[2122]	[2223]	[2324]	[2425]		
		Orchidaceae 2	Various	Environmental	Endangered	Hazard Reduction	40	Undertake burning in SFAZs and LMZs		NPWS;RFS,DPI;FCNSW					[2021]	[2122]	[2223]	[2324]	[2425]	
						Ignition Management	39	Implement Prevention Plan	Implement arson and illegal/careless fires prevention plan	RFS		NPWS;FCNSW;Police		[2021]	[2122]	[2223]	[2324]	[2425]		
		Orchidaceae 3	Various	Environmental	Endangered	Hazard Reduction	40	Undertake burning in SFAZs and LMZs		NPWS;RFS,DPI;FCNSW					[2021]	[2122]	[2223]	[2324]	[2425]	
						Ignition Management	39	Implement Prevention Plan	Implement arson and illegal/careless fires prevention plan	RFS		NPWS;FCNSW;Police		[2021]	[2122]	[2223]	[2324]	[2425]		
		Petaluridae	Various	Environmental	Endangered	Hazard Reduction	40	Undertake burning in SFAZs and LMZs		NPWS;RFS,DPI;FCNSW						[2021]	[2122]	[2223]	[2324]	[2425]
						Ignition Management	39	Implement Prevention Plan	Implement arson and illegal/careless fires prevention plan	RFS		NPWS;FCNSW;Police		[2021]	[2122]	[2223]	[2324]	[2425]		
		Proteaceae	Various	Environmental	Endangered	Hazard Reduction	40	Undertake burning in SFAZs and LMZs		NPWS;RFS,DPI;FCNSW						[2021]	[2122]	[2223]	[2324]	[2425]
						Ignition Management	39	Implement Prevention Plan	Implement arson and illegal/careless fires prevention plan	RFS		NPWS;FCNSW;Police		[2021]	[2122]	[2223]	[2324]	[2425]		
		Rhamnaceae 1	Various	Environmental	Endangered	Hazard Reduction	40	Undertake burning in SFAZs and LMZs		NPWS;RFS,DPI;FCNSW						[2021]	[2122]	[2223]	[2324]	[2425]
						Ignition Management	39	Implement Prevention Plan	Implement arson and illegal/careless fires prevention plan	RFS		NPWS;FCNSW;Police		[2021]	[2122]	[2223]	[2324]	[2425]		
		Rhamnaceae 2	Various	Environmental	Endangered	Hazard Reduction	40	Undertake burning in SFAZs and LMZs		NPWS;RFS,DPI;FCNSW						[2021]	[2122]	[2223]	[2324]	[2425]
						Ignition Management	39	Implement Prevention Plan	Implement arson and illegal/careless fires prevention plan	RFS		NPWS;FCNSW;Police		[2021]	[2122]	[2223]	[2324]	[2425]		
		Rutaceae	Various	Environmental	Endangered	Hazard Reduction	40	Undertake burning in SFAZs and LMZs		NPWS;RFS,DPI;FCNSW						[2021]	[2122]	[2223]	[2324]	[2425]
						Ignition Management	39	Implement Prevention Plan	Implement arson and illegal/careless fires prevention plan	RFS		NPWS;FCNSW;Police		[2021]	[2122]	[2223]	[2324]	[2425]		
		Scincidae	Various	Environmental	Endangered	Hazard Reduction	40	Undertake burning in SFAZs and LMZs		NPWS;RFS,DPI;FCNSW						[2021]	[2122]	[2223]	[2324]	[2425]
						Ignition Management	39	Implement Prevention Plan	Implement arson and illegal/careless fires prevention plan	RFS		NPWS;FCNSW;Police		[2021]	[2122]	[2223]	[2324]	[2425]		
		Scrophulariaceae 1	Various	Environmental	Endangered	Hazard Reduction	40	Undertake burning in SFAZs and LMZs		NPWS;RFS,DPI;FCNSW						[2021]	[2122]	[2223]	[2324]	[2425]
						Ignition Management	39	Implement Prevention Plan	Implement arson and illegal/careless fires prevention plan	RFS		NPWS;FCNSW;Police		[2021]	[2122]	[2223]	[2324]	[2425]		
	Scrophulariaceae 2	Various	Environmental	Endangered	Hazard Reduction	40	Undertake burning in SFAZs and LMZs		NPWS;RFS,DPI;FCNSW						[2021]	[2122]	[2223]	[2324]	[2425]	
					Ignition Management	39	Implement Prevention Plan	Implement arson and illegal/careless fires prevention plan	RFS		NPWS;FCNSW;Police		[2021]	[2122]	[2223]	[2324]	[2425]			
	5	Jaunter - Rural Properties	Jaunter	Human Settlement	Residential	Community Education	23	Undertake community engagement activity			RFS				[2021]	[2122]	[2223]	[2324]	[2425]	
						Preparedness	24	Inspect and maintain Fire Trails			RFS		NPWS		[2021]	[2122]	[2223]	[2324]	[2425]	
	6	Turondale - Rural Properties	Turondale	Human Settlement	Residential	Community Education	23	Undertake community engagement activity			RFS				[2021]	[2122]	[2223]	[2324]	[2425]	
						Hazard Reduction	14	Inspect and Maintain SFAZ as Required			RFS				[2021]	[2122]	[2223]	[2324]	[2425]	
						Preparedness	25	Inspect and maintain Fire Trails			RFS				[2021]	[2122]	[2223]	[2324]	[2425]	
	7	Gurnang State Forest	Gurnang	Economic	Commercial Forests	Community Education	7	Make Fact Sheets and Pamphlets Available	Recreation Use of Forests information and Solid Fuel Fire Ban information available through Visitor Information Centres		FCNSW		LGA;RFS		[2021]	[2122]	[2223]	[2324]	[2425]	
						Hazard Reduction	8	Undertake burning in LMZs and SFAZs	In line with FCNSW Softwood Plantation Division Fuel Management Plan		FCNSW				[2021]	[2122]	[2223]	[2324]	[2425]	
						Ignition Management	9	Activate No Burn Plan	Activate solid fuel fire ban in State Forests during Bush Fire Danger Period		FCNSW		RFS;Police		[2021]	[2122]	[2223]	[2324]	[2425]	
						Preparedness	11	Inspect and Maintain Strategic Fire Trails	Maintain a road network within Plantations in line with FCNSW Strategic Plan of Management		FCNSW				[2021]	[2122]	[2223]	[2324]	[2425]	
							13	Inspect and Maintain Water Points and Fire Breaks			FCNSW				[2021]	[2122]	[2223]	[2324]	[2425]	
						Property Planning	10	Implement FCNSW State of Preparation Guidelines			FCNSW				[2021]	[2122]	[2223]	[2324]	[2425]	
	8	Jenolan State Forest	Jenolan	Economic	Commercial Forests	Community Education	7	Make Fact Sheets and Pamphlets Available	Recreation Use of Forests information and Solid Fuel Fire Ban information available through Visitor Information Centres		FCNSW		LGA;RFS		[2021]	[2122]	[2223]	[2324]	[2425]	
						Hazard Reduction	8	Undertake burning in LMZs and SFAZs	In line with FCNSW Softwood Plantation Division Fuel Management Plan		FCNSW				[2021]	[2122]	[2223]	[2324]	[2425]	
						Ignition Management	9	Activate No Burn Plan	Activate solid fuel fire ban in State Forests during Bush Fire Danger Period		FCNSW		RFS;Police		[2021]	[2122]	[2223]	[2324]	[2425]	
						Preparedness	11	Inspect and Maintain Strategic Fire Trails	Maintain a road network within Plantations in line with FCNSW Strategic Plan of Management		FCNSW				[2021]	[2122]	[2223]	[2324]	[2425]	
							13	Inspect and Maintain Water Points and Fire Breaks			FCNSW				[2021]	[2122]	[2223]	[2324]	[2425]	
						Property Planning	10	Implement FCNSW State of Preparation Guidelines			FCNSW				[2021]	[2122]	[2223]	[2324]	[2425]	
	9	Lowes Mount State Forest	Oberon	Economic	Commercial Forests	Community Education	7	Make Fact Sheets and Pamphlets Available	Recreation Use of Forests information and Solid Fuel Fire Ban information available through Visitor Information Centres		FCNSW		LGA;RFS		[2021]	[2122]	[2223]	[2324]	[2425]	
						Hazard Reduction	8	Undertake burning in LMZs and SFAZs	In line with FCNSW Softwood Plantation Division Fuel Management Plan		FCNSW				[2021]	[2122]	[2223]	[2324]	[2425]	
						Ignition Management	9	Activate No Burn Plan	Activate solid fuel fire ban in State Forests during Bush Fire Danger Period		FCNSW		RFS;Police		[2021]	[2122]	[2223]	[2324]	[2425]	
						Preparedness	11	Inspect and Maintain Strategic Fire Trails	Maintain a road network within Plantations in line with FCNSW Strategic Plan of Management		FCNSW				[2021]	[2122]	[2223]	[2324]	[2425]	
							13	Inspect and Maintain Water Points and Fire Breaks			FCNSW				[2021]	[2122]	[2223]	[2324]	[2425]	
						Property Planning	10	Implement FCNSW State of Preparation Guidelines			FCNSW				[2021]	[2122]	[2223]	[2324]	[2425]	
	10	Mount David State Forest	Mount David	Economic	Commercial Forests	Community Education	7	Make Fact Sheets and Pamphlets Available	Recreation Use of Forests information and Solid Fuel Fire Ban information available through Visitor Information Centres		FCNSW		LGA;RFS		[2021]	[2122]	[2223]	[2324]	[2425]	
						Hazard Reduction	8	Undertake burning in LMZs and SFAZs	In line with FCNSW Softwood Plantation Division Fuel Management Plan		FCNSW				[2021]	[2122]	[2223]	[2324]	[2425]	
						Ignition Management	9	Activate No Burn Plan	Activate solid fuel fire ban in State Forests during Bush Fire Danger Period		FCNSW		RFS;Police		[2021]	[2122]	[2223]	[2324]	[2425]	
						Preparedness	11	Inspect and Maintain Strategic Fire Trails	Maintain a road network within Plantations in line with FCNSW Strategic Plan of Management		FCNSW				[2021]	[2122]	[2223]	[2324]	[2425]	
							13	Inspect and Maintain Water Points and Fire Breaks			FCNSW				[2021]	[2122]	[2223]	[2324]	[2425]	
						Property Planning	10	Implement FCNSW State of Preparation Guidelines			FCNSW				[2021]	[2122]	[2223]	[2324]	[2425]	
	11	Vulcan State Forest	Shooters Hill	Economic	Commercial Forests	Community Education	7	Make Fact Sheets and Pamphlets Available	Recreation Use of Forests information and Solid Fuel Fire Ban information available through Visitor Information Centres		FCNSW		LGA;RFS		[2021]	[2122]	[2223]	[2324]	[2425]	
						Hazard Reduction	8	Undertake burning in LMZs and SFAZs	In line with FCNSW Softwood Plantation Division Fuel Management Plan		FCNSW				[2021]	[2122]	[2223]	[2324]	[2425]	
						Ignition Management	9	Activate No Burn Plan	Activate solid fuel fire ban in State Forests during Bush Fire Danger Period		FCNSW		RFS;Police		[2021]	[2122]	[2223]	[2324]	[2425]	
							12	Man fire towers and patrol area as required	Man fire towers and patrol area as stated in Chifley BFMC Operations Coordination Plan.		FCNSW				[2021]	[2122]	[2223]	[2324]	[2425]	
						Preparedness	11	Inspect and Maintain Strategic Fire Trails	Maintain a road network within Plantations in line with FCNSW Strategic Plan of Management		FCNSW				[2021]	[2122]	[2223]	[2324]	[2425]	
							13	Inspect and Maintain Water Points and Fire Breaks			FCNSW				[2021]	[2122]	[2223]	[2324]	[2425]	
	Property Planning	10	Implement FCNSW State of Preparation Guidelines			FCNSW				[2021]	[2122]	[2223]	[2324]	[2425]						

Priority (Risk Rating)	Asset ID	Asset Name	Asset Location	Class	Subclass	Strategy	Treatment ID	Action Description	Comment	Responsible Agencies	Other RA	Support Agencies	Other SA	2021	2122	2223	2324	2425
2A (Very High)	12	Pennsylvania State Forest	Copperhannia	Economic	Commercial Forests	Community Education	7	Make Fact Sheets and Pamphlets Available	Recreation Use of Forests information and Solid Fuel Fire Ban information available through Visitor Information Centres	FCNSW		LGA,RFS		[2021]	[2122]	[2223]	[2324]	[2425]
						Hazard Reduction	8	Undertake burning in LMZs and SFAZs	In line with FCNSW Softwood Plantation Division Fuel Management Plan	FCNSW			[2021]	[2122]	[2223]	[2324]	[2425]	
						Ignition Management	9	Activate No Burn Plan	Activate solid fuel fire ban in State Forests during Bush Fire Danger Period	FCNSW		RFS,Police		[2021]	[2122]	[2223]	[2324]	[2425]
						Preparedness	11	Inspect and Maintain Strategic Fire Trails	Maintain a road network within Plantations in line with FCNSW Strategic Plan of Management	FCNSW			[2021]	[2122]	[2223]	[2324]	[2425]	
							13	Inspect and Maintain Water Points and Fire Breaks		FCNSW			[2021]	[2122]	[2223]	[2324]	[2425]	
	Property Planning	10	Implement FCNSW State of Preparation Guidelines		FCNSW			[2021]	[2122]	[2223]	[2324]	[2425]						
	13	Yetholme - Village	Yetholme	Human Settlement	Residential	Community Education	15	Undertake community engagement activity		RFS				[2021]	[2122]	[2223]	[2324]	[2425]
						Hazard Reduction	27	Create and Maintain APZ		Private		RFS		[2021]	[2122]	[2223]	[2324]	[2425]
							28	Inspect and Maintain SFAZ as Required		RFS			[2021]	[2122]	[2223]	[2324]	[2425]	
	Preparedness	16	Inspect and maintain Fire Trails		RFS		NPWS		[2021]	[2122]	[2223]	[2324]	[2425]					
	14	Bald Ridge - Rural Properties	Bald Ridge	Human Settlement	Residential	Community Education	29	Undertake community engagement activity		RFS				[2021]	[2122]	[2223]	[2324]	[2425]
						Hazard Reduction	50	Undertake burning in LMZ		RFS			[2021]	[2122]	[2223]	[2324]	[2425]	
						Preparedness	30	Inspect and maintain Fire Trails		RFS			[2021]	[2122]	[2223]	[2324]	[2425]	
	15	Billywillinga - Rural Properties	Billywillinga	Human Settlement	Residential	Community Education	29	Undertake community engagement activity		RFS				[2021]	[2122]	[2223]	[2324]	[2425]
						Hazard Reduction	31	Undertake burning in SFAZ		RFS			[2021]	[2122]	[2223]	[2324]	[2425]	
						Preparedness	30	Inspect and maintain Fire Trails		RFS			[2021]	[2122]	[2223]	[2324]	[2425]	
	16	Colo - Rural Properties	Colo	Human Settlement	Residential	Community Education	29	Undertake community engagement activity		RFS				[2021]	[2122]	[2223]	[2324]	[2425]
						Preparedness	32	Inspect and maintain Fire Trails		RFS,DPI			[2021]	[2122]	[2223]	[2324]	[2425]	
	17	Copperhannia - Rural Properties	Copperhannia	Human Settlement	Residential	Community Education	29	Undertake community engagement activity		RFS				[2021]	[2122]	[2223]	[2324]	[2425]
						Hazard Reduction	22	Undertake Mosaic burning within LMZ		NPWS,RFS			[2021]	[2122]	[2223]	[2324]	[2425]	
						Preparedness	33	Inspect and maintain Fire Trails		RFS		NPWS		[2021]	[2122]	[2223]	[2324]	[2425]
	18	Essington - Rural Properties	Essington	Human Settlement	Residential	Community Education	29	Undertake community engagement activity		RFS				[2021]	[2122]	[2223]	[2324]	[2425]
						Preparedness	6	Inspect and maintain Fire Trails		RFS			[2021]	[2122]	[2223]	[2324]	[2425]	
	19	Mount Rankin - Rural Properties	Mount Rankin	Human Settlement	Residential	Community Education	29	Undertake community engagement activity		RFS				[2021]	[2122]	[2223]	[2324]	[2425]
						Preparedness	30	Inspect and maintain Fire Trails		RFS			[2021]	[2122]	[2223]	[2324]	[2425]	
	20	Peel - Rural Properties	Peel	Human Settlement	Residential	Community Education	29	Undertake community engagement activity		RFS				[2021]	[2122]	[2223]	[2324]	[2425]
						Hazard Reduction	34	Undertake burning in LMZ		RFS			[2021]	[2122]	[2223]	[2324]	[2425]	
	21	Rockley Mount - Rural Properties	Rockley Mount	Human Settlement	Residential	Community Education	29	Undertake community engagement activity		RFS				[2021]	[2122]	[2223]	[2324]	[2425]
						Hazard Reduction	35	Undertake burning in SFAZ		RFS		DPI		[2021]	[2122]	[2223]	[2324]	[2425]
	22	Watton - Rural Properties	Watton	Human Settlement	Residential	Community Education	29	Undertake community engagement activity		RFS				[2021]	[2122]	[2223]	[2324]	[2425]
						Hazard Reduction	36	Undertake burn in SFAZ		RFS			[2021]	[2122]	[2223]	[2324]	[2425]	
	23	Wisemans Creek - Rural Properties	Wisemans Creek	Human Settlement	Residential	Community Education	29	Undertake community engagement activity		RFS				[2021]	[2122]	[2223]	[2324]	[2425]
						Preparedness	30	Inspect and maintain Fire Trails		RFS			[2021]	[2122]	[2223]	[2324]	[2425]	
	24	Blenheim State Forest	Oberon	Economic	Commercial Forests	Community Education	41	Make Fact Sheets and Pamphlets Available	Recreation Use of Forests information and Solid Fuel Fire Ban information available through Visitor Information Centres	FCNSW		LGA,RFS		[2021]	[2122]	[2223]	[2324]	[2425]
						Hazard Reduction	42	Undertake burning in LMZs and SFAZs	In line with FCNSW Softwood Plantation Division Fuel Management Plan	FCNSW			[2021]	[2122]	[2223]	[2324]	[2425]	
						Ignition Management	43	Activate No Burn Plan	Activate solid fuel fire ban in State Forests during Bush Fire Danger Period	FCNSW		RFS,Police		[2021]	[2122]	[2223]	[2324]	[2425]
						Preparedness	45	Inspect & Maintain Strategic Fire Trails	Maintain a road network within Plantations in line with FCNSW Strategic Plan of Management	FCNSW			[2021]	[2122]	[2223]	[2324]	[2425]	
							46	Inspect and Maintain Water Points and Fire Breaks		FCNSW			[2021]	[2122]	[2223]	[2324]	[2425]	
	Property Planning	44	Implement FCNSW State of Preparation Guidelines		FCNSW			[2021]	[2122]	[2223]	[2324]	[2425]						
	25	Dog Rocks State Forest	Dog Rocks	Economic	Commercial Forests	Community Education	41	Make Fact Sheets and Pamphlets Available	Recreation Use of Forests information and Solid Fuel Fire Ban information available through Visitor Information Centres	FCNSW		LGA,RFS		[2021]	[2122]	[2223]	[2324]	[2425]
						Hazard Reduction	42	Undertake burning in LMZs and SFAZs	In line with FCNSW Softwood Plantation Division Fuel Management Plan	FCNSW			[2021]	[2122]	[2223]	[2324]	[2425]	
						Ignition Management	43	Activate No Burn Plan	Activate solid fuel fire ban in State Forests during Bush Fire Danger Period	FCNSW		RFS,Police		[2021]	[2122]	[2223]	[2324]	[2425]
						Preparedness	45	Inspect & Maintain Strategic Fire Trails	Maintain a road network within Plantations in line with FCNSW Strategic Plan of Management	FCNSW			[2021]	[2122]	[2223]	[2324]	[2425]	
							46	Inspect and Maintain Water Points and Fire Breaks		FCNSW			[2021]	[2122]	[2223]	[2324]	[2425]	
	Property Planning	44	Implement FCNSW State of Preparation Guidelines		FCNSW			[2021]	[2122]	[2223]	[2324]	[2425]						
	26	Essington State Forest	Essington	Economic	Commercial Forests	Community Education	41	Make Fact Sheets and Pamphlets Available	Recreation Use of Forests information and Solid Fuel Fire Ban information available through Visitor Information Centres	FCNSW		LGA,RFS		[2021]	[2122]	[2223]	[2324]	[2425]
						Hazard Reduction	42	Undertake burning in LMZs and SFAZs	In line with FCNSW Softwood Plantation Division Fuel Management Plan	FCNSW			[2021]	[2122]	[2223]	[2324]	[2425]	
						Ignition Management	43	Activate No Burn Plan	Activate solid fuel fire ban in State Forests during Bush Fire Danger Period	FCNSW		RFS,Police		[2021]	[2122]	[2223]	[2324]	[2425]
						Preparedness	45	Inspect & Maintain Strategic Fire Trails	Maintain a road network within Plantations in line with FCNSW Strategic Plan of Management	FCNSW			[2021]	[2122]	[2223]	[2324]	[2425]	
							46	Inspect and Maintain Water Points and Fire Breaks		FCNSW			[2021]	[2122]	[2223]	[2324]	[2425]	
	Property Planning	44	Implement FCNSW State of Preparation Guidelines		FCNSW			[2021]	[2122]	[2223]	[2324]	[2425]						
	27	Vittoria State Forest	Vittoria	Economic	Commercial Forests	Community Education	41	Make Fact Sheets and Pamphlets Available	Recreation Use of Forests information and Solid Fuel Fire Ban information available through Visitor Information Centres	FCNSW		LGA,RFS		[2021]	[2122]	[2223]	[2324]	[2425]
						Hazard Reduction	42	Undertake burning in LMZs and SFAZs	In line with FCNSW Softwood Plantation Division Fuel Management Plan	FCNSW			[2021]	[2122]	[2223]	[2324]	[2425]	
						Ignition Management	43	Activate No Burn Plan	Activate solid fuel fire ban in State Forests during Bush Fire Danger Period	FCNSW		RFS,Police		[2021]	[2122]	[2223]	[2324]	[2425]
						Preparedness	45	Inspect & Maintain Strategic Fire Trails	Maintain a road network within Plantations in line with FCNSW Strategic Plan of Management	FCNSW			[2021]	[2122]	[2223]	[2324]	[2425]	
							46	Inspect and Maintain Water Points and Fire Breaks		FCNSW			[2021]	[2122]	[2223]	[2324]	[2425]	
	Property Planning	44	Implement FCNSW State of Preparation Guidelines		FCNSW			[2021]	[2122]	[2223]	[2324]	[2425]						

Priority (Risk Rating)	Asset ID	Asset Name	Asset Location	Class	Subclass	Strategy	Treatment ID	Action Description	Comment	Responsible Agencies	Other RA	Support Agencies	Other SA	2021	2122	2223	2324	2425
2A (Very High)	28	Sunny Corner - Rural Properties	Sunny Corner	Human Settlement	Residential	Hazard Reduction	5	Inspect and Maintain APZ		Private		RFS		[2021]	[2122]	[2223]	[2324]	[2425]
						Hazard Reduction	14	Inspect and Maintain SFAZ as Required		RFS			[2021]	[2122]	[2223]	[2324]	[2425]	
						Preparedness	6	Inspect and maintain Fire Trails		RFS			[2021]	[2122]	[2223]	[2324]	[2425]	
	29	Chatham Valley - Rural Properties	Chatham Valley	Human Settlement	Residential	Community Education	23	Undertake community engagement activity		RFS				[2021]	[2122]	[2223]	[2324]	[2425]
						Hazard Reduction	26	Create and Maintain APZ		Private		RFS		[2021]	[2122]	[2223]	[2324]	[2425]
						Preparedness	24	Inspect and maintain Fire Trails		RFS		NPWS		[2021]	[2122]	[2223]	[2324]	[2425]
	30	Kirkconnell - Rural Properties	Kirkconnell	Human Settlement	Residential	Community Education	47	Undertake community engagement activity		RFS				[2021]	[2122]	[2223]	[2324]	[2425]
						Hazard Reduction	49	Create and Maintain APZ		Private		RFS		[2021]	[2122]	[2223]	[2324]	[2425]
						Preparedness	48	Inspect and maintain Fire Trails		NPWS		RFS		[2021]	[2122]	[2223]	[2324]	[2425]
	31	Curragh - Rural Properties	Curragh	Human Settlement	Residential	Community Education	47	Undertake community engagement activity		RFS				[2021]	[2122]	[2223]	[2324]	[2425]
						Hazard Reduction	49	Create and Maintain APZ		Private		RFS		[2021]	[2122]	[2223]	[2324]	[2425]
						Preparedness	48	Inspect and maintain Fire Trails		NPWS		RFS		[2021]	[2122]	[2223]	[2324]	[2425]
2B (Very High)	0	Recreational Camping Areas	Various	Human Settlement	Other	Community Education	52	Make Fact Sheets and Pamphlets Available	RFS Fact Sheets available through Tourist Information Centre/Other Outlet	RFS		LGA;NPWS		[2021]	[2122]	[2223]	[2324]	[2425]
						Community Education	53	Installation of camp fire safety signage		RFS		LGA;NPWS;DPI;FCNSW		[2021]	[2122]	[2223]	[2324]	[2425]
						Preparedness	51	Inspect and maintain Fire Trails		LGA;NPWS;DPI;FCNSW		RFS		[2021]	[2122]	[2223]	[2324]	[2425]
2C (Very High)	0	Telecommunications Infrastructure	Various	Economic	Infrastructure	Hazard Reduction	57	Inspect and Maintain Fire Breaks	In accordance with site lease, licence or easement agreements with the land owner/manager.	Other	Telecommunication Agencies			[2021]	[2122]	[2223]	[2324]	[2425]
	32	Freemantle - Rural Properties	Freemantle	Human Settlement	Residential	Community Education	47	Undertake community engagement activity		RFS				[2021]	[2122]	[2223]	[2324]	[2425]
						Hazard Reduction	49	Create and Maintain APZ		Private		RFS		[2021]	[2122]	[2223]	[2324]	[2425]
						Preparedness	48	Inspect and maintain Fire Trails		NPWS		RFS		[2021]	[2122]	[2223]	[2324]	[2425]
	33	Burraga - Rural Properties	Burraga	Human Settlement	Residential	Community Education	4	Undertake community engagement activity		RFS				[2021]	[2122]	[2223]	[2324]	[2425]
						Hazard Reduction	5	Inspect and Maintain APZ		Private		RFS		[2021]	[2122]	[2223]	[2324]	[2425]
						Preparedness	54	Inspect and maintain Fire Trails		RFS			[2021]	[2122]	[2223]	[2324]	[2425]	
	34	Caloola - Rural Properties	Caloola	Human Settlement	Residential	Community Education	4	Undertake community engagement activity		RFS				[2021]	[2122]	[2223]	[2324]	[2425]
						Hazard Reduction	5	Inspect and Maintain APZ		Private		RFS		[2021]	[2122]	[2223]	[2324]	[2425]
						Preparedness	54	Inspect and maintain Fire Trails		RFS			[2021]	[2122]	[2223]	[2324]	[2425]	
	35	Duramana - Rural Properties	Duramana	Human Settlement	Residential	Community Education	55	Undertake community engagement activity		RFS				[2021]	[2122]	[2223]	[2324]	[2425]
						Hazard Reduction	56	Create and Maintain APZ		Private		RFS		[2021]	[2122]	[2223]	[2324]	[2425]
	36	Forest Grove Estate	Forest Grove	Human Settlement	Residential	Community Education	55	Undertake community engagement activity		RFS				[2021]	[2122]	[2223]	[2324]	[2425]
						Hazard Reduction	56	Create and Maintain APZ		Private		RFS		[2021]	[2122]	[2223]	[2324]	[2425]
	37	Perthville - Rural Properties	Perthville	Human Settlement	Residential	Community Education	47	Undertake community engagement activity		RFS				[2021]	[2122]	[2223]	[2324]	[2425]
						Hazard Reduction	49	Create and Maintain APZ		Private		RFS		[2021]	[2122]	[2223]	[2324]	[2425]
	38	White Rock - Rural Properties	White Rock	Human Settlement	Residential	Community Education	47	Undertake community engagement activity		RFS				[2021]	[2122]	[2223]	[2324]	[2425]
						Hazard Reduction	49	Create and Maintain APZ		Private		RFS		[2021]	[2122]	[2223]	[2324]	[2425]
	39	Glanmire - Rural Properties	Glanmire	Human Settlement	Residential	Community Education	47	Undertake community engagement activity		RFS				[2021]	[2122]	[2223]	[2324]	[2425]
						Hazard Reduction	49	Create and Maintain APZ		Private		RFS		[2021]	[2122]	[2223]	[2324]	[2425]
	40	Laffing Waters - Rural Properties	Laffing Waters	Human Settlement	Residential	Community Education	47	Undertake community engagement activity		RFS				[2021]	[2122]	[2223]	[2324]	[2425]
Hazard Reduction						49	Create and Maintain APZ		Private		RFS		[2021]	[2122]	[2223]	[2324]	[2425]	
Preparedness						48	Inspect and maintain Fire Trails		NPWS		RFS		[2021]	[2122]	[2223]	[2324]	[2425]	
3A (High)	0	Aboriginal Sites of Low Vulnerability	Various	Cultural Heritage	Aboriginal Significance	Hazard Reduction	70	Undertake burning in SFAZs and LMZs		NPWS;RFS;DPI;FCNSW				[2021]	[2122]	[2223]	[2324]	[2425]
						Ignition Management	69	Implement Prevention Plan	Implement arson and illegal/careless fires prevention plan	RFS		NPWS;FCNSW;Police		[2021]	[2122]	[2223]	[2324]	[2425]
	41	Jeremy - Rural Properties	Jeremy	Human Settlement	Residential	Community Education	4	Undertake community engagement activity		RFS				[2021]	[2122]	[2223]	[2324]	[2425]
						Hazard Reduction	5	Inspect and Maintain APZ		Private		RFS		[2021]	[2122]	[2223]	[2324]	[2425]
						Hazard Reduction	71	Undertake Mosaic burning within LMZ		RFS			[2223]					
	42	Jenolan - Rural Properties	Jenolan	Human Settlement	Residential	Community Education	23	Undertake community engagement activity		RFS				[2021]	[2122]	[2223]	[2324]	[2425]
						Hazard Reduction	14	Inspect and Maintain SFAZ as Required		RFS			[2021]	[2122]	[2223]	[2324]	[2425]	
						Preparedness	24	Inspect and maintain Fire Trails		RFS		NPWS		[2021]	[2122]	[2223]	[2324]	[2425]
	43	Dog Rocks - Rural Properties	Dog Rocks	Human Settlement	Residential	Community Education	65	Undertake community engagement activity		RFS				[2021]	[2122]	[2223]	[2324]	[2425]
	44	Napoleon Reef	Napoleon Reef	Human Settlement	Residential	Hazard Reduction	60	Undertake burning in LMZ		RFS		FCNSW		[2021]	[2122]	[2223]	[2324]	[2425]
						Hazard Reduction	63	Inspect and Maintain SFAZ as Required		RFS			[2021]	[2122]	[2223]	[2324]	[2425]	
	Property Planning	59	Implement Community Protection Plan		RFS		Private		[2021]	[2122]	[2223]	[2324]	[2425]					
	45	Sallys Flat - Rural Properties	Sallys Flat	Human Settlement	Residential	Community Education	65	Undertake community engagement activity		RFS				[2021]	[2122]	[2223]	[2324]	[2425]
	46	Wattle Flat - Rural Properties	Wattle Flat	Human Settlement	Residential	Community Education	65	Undertake community engagement activity		RFS				[2021]	[2122]	[2223]	[2324]	[2425]
						Hazard Reduction	63	Inspect and Maintain SFAZ as Required		RFS			[2021]	[2122]	[2223]	[2324]	[2425]	
						Preparedness	30	Inspect and maintain Fire Trails		RFS			[2021]	[2122]	[2223]	[2324]	[2425]	

Priority (Risk Rating)	Asset ID	Asset Name	Asset Location	Class	Subclass	Strategy	Treatment ID	Action Description	Comment	Responsible Agencies	Other RA	Support Agencies	Other SA	2021	2122	2223	2324	2425	
3A (High)	47	Sofala - Rural Properties	Sofala	Human Settlement	Residential	Community Education	65	Undertake community engagement activity		RFS				[2021]	[2122]	[2223]	[2324]	[2425]	
						Hazard Reduction	61	Create and Maintain APZ		Private;DPI		RFS			[2021]	[2122]	[2223]	[2324]	[2425]
							62	Undertake Mechanical Works in SFAZ		DPI					[2021]	[2122]	[2223]	[2324]	[2425]
	48	Arkstone - Rural Properties	Arkstone	Human Settlement	Residential	Community Education	65	Undertake community engagement activity		RFS				[2021]	[2122]	[2223]	[2324]	[2425]	
						Preparedness	66	Inspect and maintain Fire Trails		RFS				[2021]	[2122]	[2223]	[2324]	[2425]	
	49	Ballyroe - Rural Properties	Ballyroe	Human Settlement	Residential	Community Education	65	Undertake community engagement activity		RFS					[2021]	[2122]	[2223]	[2324]	[2425]
						Hazard Reduction	60	Undertake burning in LMZ		RFS		FCNSW			[2021]				
						Preparedness	66	Inspect and maintain Fire Trails		RFS				[2021]	[2122]	[2223]	[2324]	[2425]	
	50	Black Springs - Rural Properties	Black Springs	Human Settlement	Residential	Community Education	65	Undertake community engagement activity		RFS					[2021]	[2122]	[2223]	[2324]	[2425]
						Hazard Reduction	68	Inspect and Maintain SFAZ as Required		RFS				[2021]	[2122]	[2223]	[2324]	[2425]	
	51	Bruinbun - Rural Properties	Bruinbun	Human Settlement	Residential	Community Education	65	Undertake community engagement activity		RFS					[2021]	[2122]	[2223]	[2324]	[2425]
	52	Clear Creek - Rural Properties	Peel	Human Settlement	Residential	Community Education	65	Undertake community engagement activity		RFS					[2021]	[2122]	[2223]	[2324]	[2425]
	53	Gingkin - Rural Properties	Gingkin	Human Settlement	Residential	Community Education	65	Undertake community engagement activity		RFS					[2021]	[2122]	[2223]	[2324]	[2425]
						Preparedness	66	Inspect and maintain Fire Trails		RFS				[2021]	[2122]	[2223]	[2324]	[2425]	
	54	Paling Yards (Oberon) - Rural Properties	Paling Yards (Oberon)	Human Settlement	Residential	Community Education	65	Undertake community engagement activity		RFS					[2021]	[2122]	[2223]	[2324]	[2425]
	55	Shooters Hill - Rural Properties	Shooters Hill	Human Settlement	Residential	Community Education	65	Undertake community engagement activity		RFS					[2021]	[2122]	[2223]	[2324]	[2425]
	56	Trunkey Creek - Rural Properties	Trunkey Creek	Human Settlement	Residential	Community Education	65	Undertake community engagement activity		RFS					[2021]	[2122]	[2223]	[2324]	[2425]
						Hazard Reduction	67	Undertake burning in LMZ		RFS					[2122]				
							68	Inspect and Maintain SFAZ as Required		RFS				[2021]	[2122]	[2223]	[2324]	[2425]	
	57	Mount Ryan Communication Tower	Mount David State Forest	Economic	Infrastructure	Hazard Reduction	64	Create and Maintain APZ		FCNSW					[2021]	[2122]	[2223]	[2324]	[2425]
	58	Shooters Hill Fire Lookout and Communication Tower	Vulcan State Forest	Economic	Infrastructure	Hazard Reduction	64	Create and Maintain APZ		FCNSW					[2021]	[2122]	[2223]	[2324]	[2425]
	59	Burruga Fire Lookout and Communication Tower	Isabella	Economic	Infrastructure	Hazard Reduction	64	Create and Maintain APZ		FCNSW					[2021]	[2122]	[2223]	[2324]	[2425]
	60	Rockley - Rural Properties	Rockley	Human Settlement	Residential	Community Education	47	Undertake community engagement activity		RFS					[2021]	[2122]	[2223]	[2324]	[2425]
						Hazard Reduction	49	Create and Maintain APZ		Private		RFS			[2021]	[2122]	[2223]	[2324]	[2425]
	61	Fitzgeralds Valley - Rural Properties	Fitzgeralds Valley	Human Settlement	Residential	Community Education	47	Undertake community engagement activity		RFS					[2021]	[2122]	[2223]	[2324]	[2425]
						Hazard Reduction	49	Create and Maintain APZ		Private		RFS			[2021]	[2122]	[2223]	[2324]	[2425]
						Preparedness	48	Inspect and maintain Fire Trails		NPWS		RFS			[2021]	[2122]	[2223]	[2324]	[2425]
	62	Georges Plains - Rural Properties	Georges Plains	Human Settlement	Residential	Community Education	47	Undertake community engagement activity		RFS					[2021]	[2122]	[2223]	[2324]	[2425]
						Hazard Reduction	49	Create and Maintain APZ		Private		RFS			[2021]	[2122]	[2223]	[2324]	[2425]
	63	The Lagoon - Rural Properties	The Lagoon	Human Settlement	Residential	Community Education	47	Undertake community engagement activity		RFS					[2021]	[2122]	[2223]	[2324]	[2425]
						Hazard Reduction	49	Create and Maintain APZ		Private		RFS			[2021]	[2122]	[2223]	[2324]	[2425]
	64	Wambool - Rural Properties	Wambool	Human Settlement	Residential	Community Education	65	Undertake community engagement activity		RFS					[2021]	[2122]	[2223]	[2324]	[2425]
	65	Wimbledon - Rural Properties	Wimbledon	Human Settlement	Residential	Community Education	47	Undertake community engagement activity		RFS					[2021]	[2122]	[2223]	[2324]	[2425]
						Hazard Reduction	49	Create and Maintain APZ		Private		RFS			[2021]	[2122]	[2223]	[2324]	[2425]
	66	Crudine - Rural Properties	Crudine	Human Settlement	Residential	Community Education	65	Undertake community engagement activity		RFS					[2021]	[2122]	[2223]	[2324]	[2425]
	67	Isabella - Rural Properties	Isabella	Human Settlement	Residential	Community Education	65	Undertake community engagement activity		RFS					[2021]	[2122]	[2223]	[2324]	[2425]
						Preparedness	30	Inspect and maintain Fire Trails		RFS				[2021]	[2122]	[2223]	[2324]	[2425]	
	68	Killongbutta - Rural Properties	Killongbutta	Human Settlement	Residential	Community Education	65	Undertake community engagement activity		RFS					[2021]	[2122]	[2223]	[2324]	[2425]
						Preparedness	30	Inspect and maintain Fire Trails		RFS				[2021]	[2122]	[2223]	[2324]	[2425]	
	69	Millah Murrah - Rural Properties	Millah Murrah	Human Settlement	Residential	Community Education	65	Undertake community engagement activity		RFS					[2021]	[2122]	[2223]	[2324]	[2425]
						Preparedness	30	Inspect and maintain Fire Trails		RFS				[2021]	[2122]	[2223]	[2324]	[2425]	
	70	Paling Yards (Bathurst) - Rural Properties	Paling Yards (Bathurst)	Human Settlement	Residential	Community Education	65	Undertake community engagement activity		RFS					[2021]	[2122]	[2223]	[2324]	[2425]
						Preparedness	30	Inspect and maintain Fire Trails		RFS				[2021]	[2122]	[2223]	[2324]	[2425]	
	71	Tambaroora - Rural Properties	Tambaroora	Human Settlement	Residential	Community Education	65	Undertake community engagement activity		RFS					[2021]	[2122]	[2223]	[2324]	[2425]
						Preparedness	30	Inspect and maintain Fire Trails		RFS				[2021]	[2122]	[2223]	[2324]	[2425]	
	72	Tannas Mount - Rural Properties	Tannas Mount	Human Settlement	Residential	Community Education	65	Undertake community engagement activity		RFS					[2021]	[2122]	[2223]	[2324]	[2425]
	73	Triangle Flat - Rural Properties	Triangle Flat	Human Settlement	Residential	Community Education	65	Undertake community engagement activity		RFS					[2021]	[2122]	[2223]	[2324]	[2425]
Preparedness						30	Inspect and maintain Fire Trails		RFS				[2021]	[2122]	[2223]	[2324]	[2425]		
74	Upper Turon - Rural Properties	Upper Turon	Human Settlement	Residential	Community Education	65	Undertake community engagement activity		RFS					[2021]	[2122]	[2223]	[2324]	[2425]	
					Preparedness	30	Inspect and maintain Fire Trails		RFS				[2021]	[2122]	[2223]	[2324]	[2425]		
75	Trunkey Creek Public School	Carlyle St, Trunkey Creek	Human Settlement	Special Fire Protection	Hazard Reduction	58	Create and Maintain APZ		Private			RFS		[2021]	[2122]	[2223]	[2324]	[2425]	
					Preparedness	33	Inspect and maintain Fire Trails		RFS				[2021]	[2122]	[2223]	[2324]	[2425]		

Chifley BFMC Bush Fire Risk Management Plan 2020

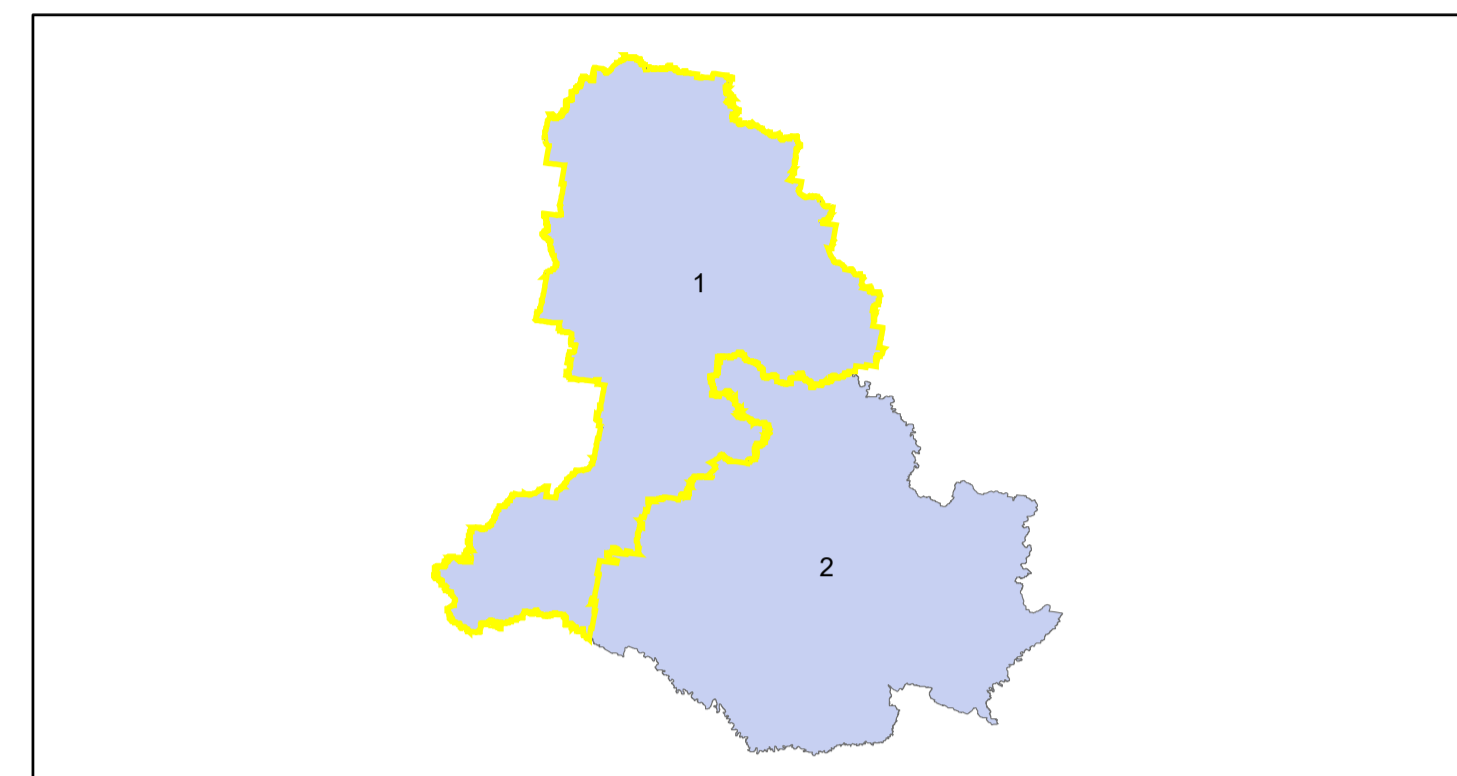
Bathurst - Map Display Area Map 1 of 2

This Bush Fire Risk Management Plan (BFRMP) has been prepared by the Chifley Bush Fire Management Committee (BFMC) pursuant to section 52 of the Rural Fires Act 1997.

The aim of this BFRMP is to reduce the adverse impact of bush fires on life, property and the environment.

- The objectives of this BFRMP are to:
- reduce the number of human-induced bush fire ignitions that cause damage to life, property or the environment;
 - manage fuel to reduce the spread and intensity of bush fires while minimising environmental/ecological impacts;
 - reduce the community's vulnerability to bush fires by improving its preparedness; and
 - effectively contain fires with a potential to cause damage to life, property and the environment.

This map forms part of the BFRMP for the Chifley BFMC, covering the local government area(s) of Bathurst and Oberon. It should be viewed in conjunction with the accompanying BFRMP document which provides further details on the BFMC area, the assets assessed and the risk assessment process used.



Review
Under the Rural Fires Act 1997 this plan must be reviewed and updated within each successive five year period following the constitution of the BFMC. The Chifley BFMC will also review this plan as necessary. This may be triggered by a range of circumstances, including but not limited to:

- changes to the BFMC area, organisational responsibilities or legislation;
- changes to the bush fire risk in the area; or
- following a major fire event.

Assets
This BFRMP identifies the assets that are considered by the Chifley BFMC and community to be at risk from bush fires, assesses the bush fire risk to each asset and assigns treatments designed to mitigate the risk. Assets in the BFMC area identified as requiring treatments are listed in the assets table. Other assets within the BFMC area that were assessed as not requiring treatments within the life of this plan are listed in the appendix to the BFRMP document. The Map Ref number "NA" denotes non-spatial assets.

Treatments
Specific treatments assigned to assets in the Chifley area are listed in the treatments table and linked to the assets which they are designed to protect. Standard BFMC wide treatments (i.e. not linked to a specific asset) which occur on an ongoing basis within the BFMC area are:

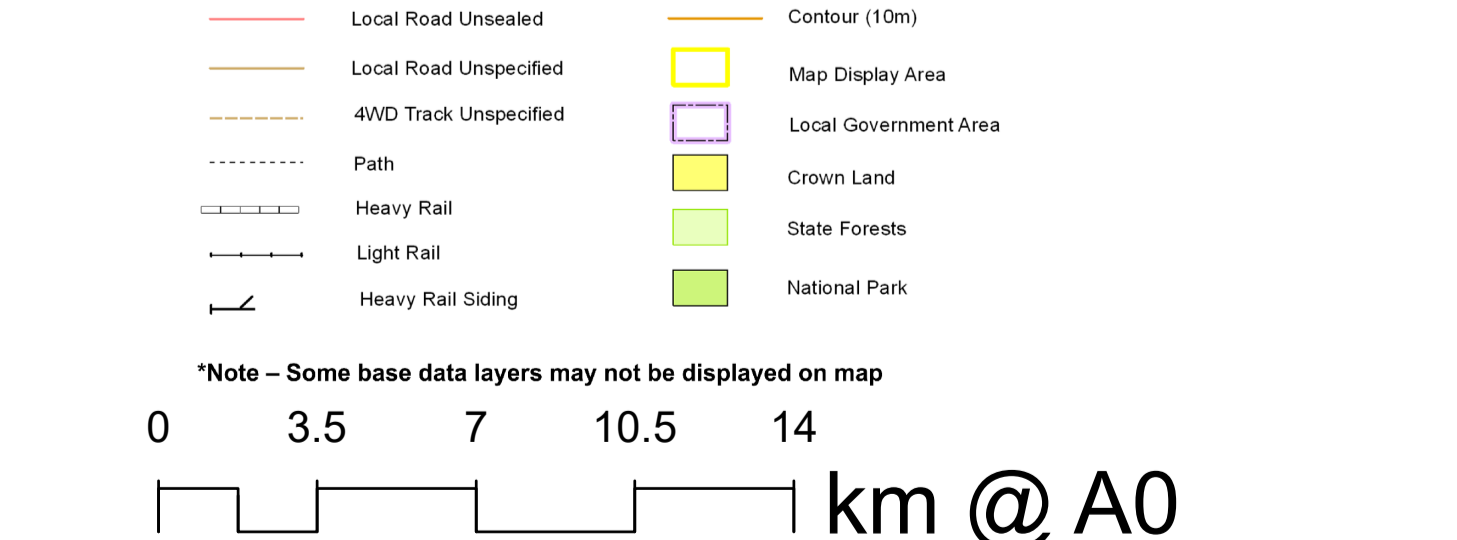
- reviewing the bush fire prone land map;
- ensuring developments in the bush fire prone land comply with Planning for Bush Fire Protection;
- using the Local Environment Plans (LEPs) to control development in areas with a bush fire risk;
- varying the standard bush fire danger period as required;
- requiring permits during bush fire danger periods
- prosecution of arsonists/offenders
- investigation of bush fire cause;
- normal fire suppression activities;
- assessing and managing compliance with strategic fire-fighting resource allocation management systems;
- preparation of a S2 Operations Coordination Plan;
- fire management plans or plans of management; and
- bush fire hazard complaints.

Note on LMAZ All areas not specifically mapped as an APZ, SFZ or FEZ are considered as LMAZ for this risk management plan. For areas identified by an LMAZ polygon on the map, please refer to the BFRMP document for the specific land management objectives.

Zone	Purpose	Suppression Objective(s)	Zone characteristics
Asset Protection Zone	To protect human life, property and highly valued public assets and values.	To enable the safe use of Direct Attack suppression strategies within the zone.	As per RFS document Standards for Asset Protection Zones.
Strategic Fire Advantage Zone	To provide strategic areas of fire protection advantage which will reduce the spread and intensity of bush fires, and reduce the potential for spot fire development.	To improve the likelihood and safe use of Parallel Attack suppression strategies within the zone, and/or Indirect Attack (back burning) in high to very high fire weather conditions within the zone.	Zone width related to suppression objectives and dependent upon: - Topography - Location of adjacent firebreaks - Spotting propensity - Mosaic pattern of treatment Assess Overall Fuel Hazard (OFH) once vegetation communities reach minimum fire thresholds within this plan.
Land Management Zone	To meet relevant land management objectives in areas where APZ or SFZs are not appropriate.	To reduce the likelihood of Crown fire development within the zone, and/or Spot fire ignition potential from the zone.	Management practices should aim to achieve mosaic fuel reduction patterns so that the majority of the SFZ has an OFH of less than high.
Fire Exclusion Zone	To exclude bush fires.	N/A	Variable dependent on size of fire sensitive area requiring protection.

Assets	Bush Fire Management Zones
Human - Residential	Fire Exclusion Zone (FEZ)
Human - Other	Asset Protection Zone (APZ)
Special Fire Protection	Land Management Zone (LMAZ)
Economic - Agricultural	Strategic Fire Advantage Zone (SFZ)
Economic - Commercial	
Economic - Infrastructure	
Economic - Sport and Recreational	
Economic - Mines	
Commercial Forests	
Drinking Water Catchments	
Environmental - Locally Important	
Environmental - Vulnerable (Species)	
Environmental - Endangered (Species)	
Cultural - Aboriginal Heritage	
Cultural - Other	
Cultural - Non-Indigenous	

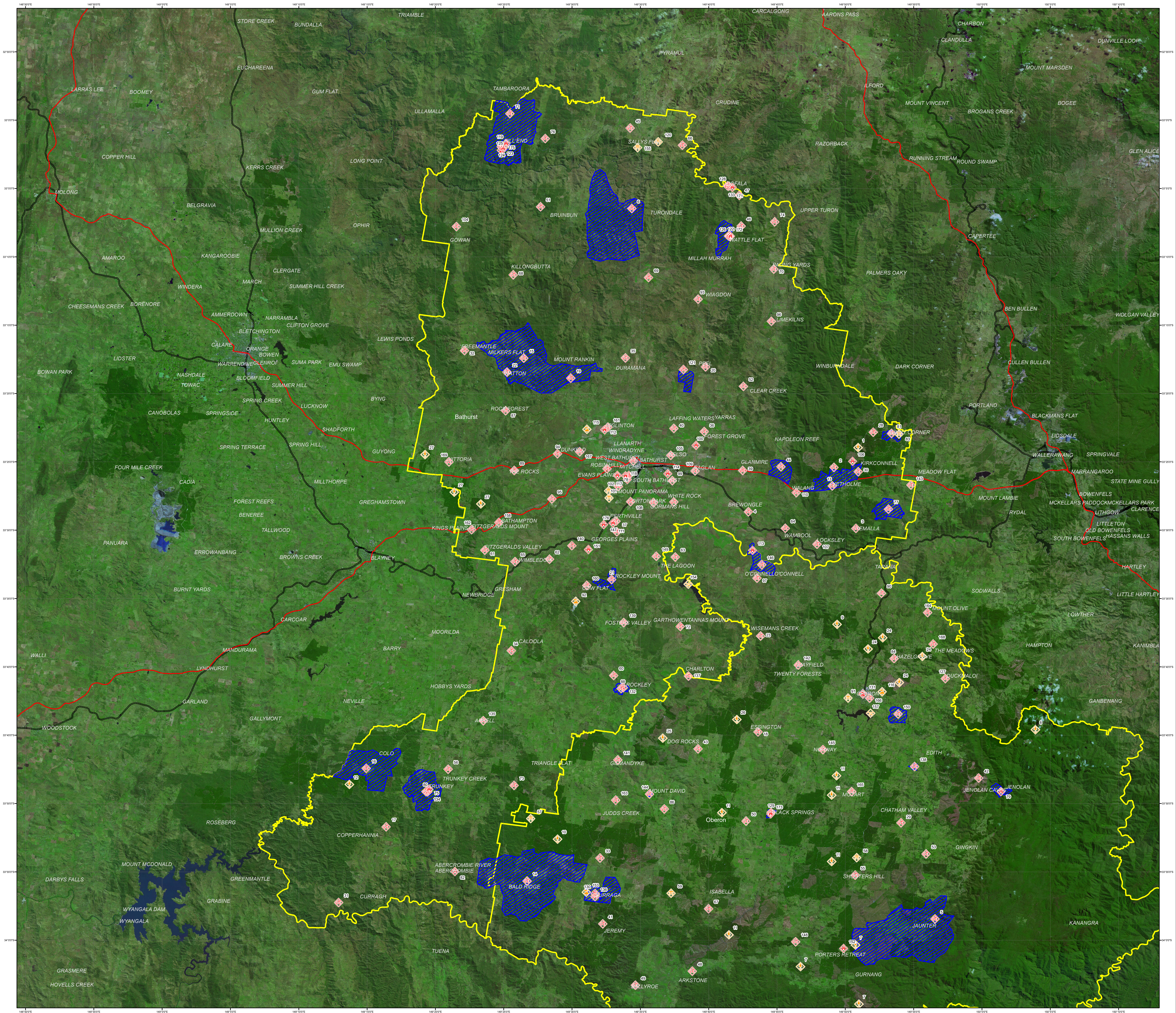
Base Data Layers	
Major Roads Sealed	Drainage Perennial
Major Roads Unsealed	Drainage Non-Perennial
Secondary Road Sealed	Hydro-Line Perennial
Local Road Sealed	Hydro-Line Non-Perennial
Local Road Unsealed	Contour (100m)
Local Road Unspecified	Contour (50m)
4WD Track Unspecified	Map Display Area
Path	Local Government Area
Heavy Rail	Crown Land
Light Rail	State Forests
Heavy Rail Siding	National Park



Disclaimer
The Chifley BFMC makes every effort to ensure the quality of the information available on this map. Before relying on the information on this map, users should carefully evaluate its accuracy, completeness and relevance for their purposes, and should obtain any appropriate professional advice relevant to their particular circumstances.

The Chifley BFMC can not guarantee and assumes no legal liability or responsibility for the accuracy, currency or completeness of the information. Copyright: Chifley BFMC 2020.

Authorized by _____ of Chifley BFMC.
Date created: Friday, 18 December 2020
BFRR version 2.1.27.0 +S



Chifley BFMC Bush Fire Risk Management Plan 2020

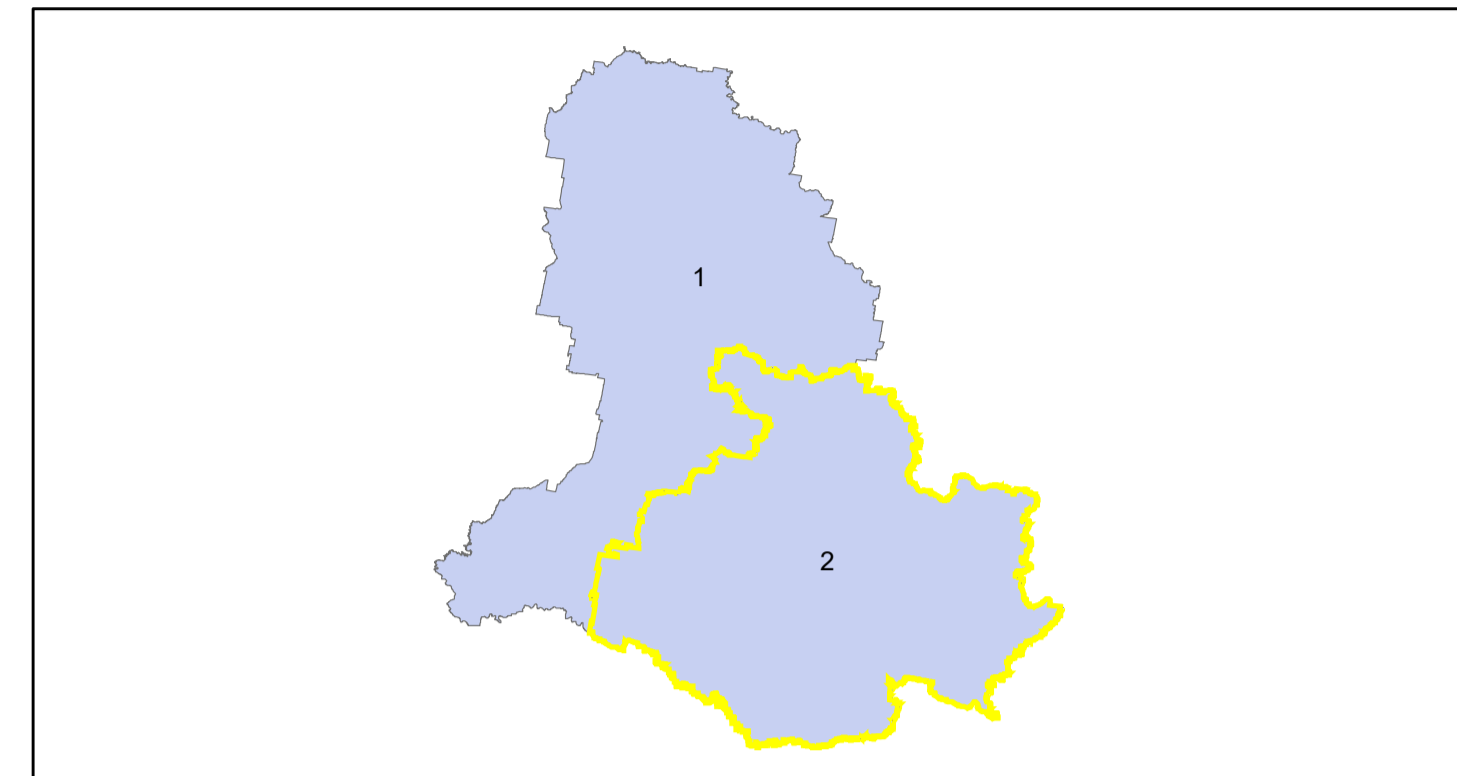
Oberon - Map Display Area Map 2 of 2

This Bush Fire Risk Management Plan (BFRMP) has been prepared by the Chifley Bush Fire Management Committee (BFMC) pursuant to section 52 of the Rural Fires Act 1997.

The aim of this BFRMP is to reduce the adverse impact of bush fires on life, property and the environment.

- The objectives of this BFRMP are to:
- reduce the number of human-induced bush fire ignitions that cause damage to life, property or the environment;
 - manage fuel to reduce the spread and intensity of bush fires while minimising environmental/ecological impacts;
 - reduce the community's vulnerability to bush fires by improving its preparedness; and
 - effectively contain fires with a potential to cause damage to life, property and the environment.

This map forms part of the BFRMP for the Chifley BFMC, covering the local government area(s) of Bathurst and Oberon. It should be viewed in conjunction with the accompanying BFRMP document which provides further details on the BFMC area, the assets assessed and the risk assessment process used.



Review
Under the Rural Fires Act 1997 this plan must be reviewed and updated within each successive five year period following the constitution of the BFMC. The Chifley BFMC will also review this plan as necessary. This may be triggered by a range of circumstances, including but not limited to:

- changes to the BFMC area, organisational responsibilities or legislation;
- changes to the bush fire risk in the area; or
- following a major fire event.

Assets
The BFRMP identifies the assets that are considered by the Chifley BFMC and community to be at risk from bush fires, assesses the bush fire risk to each asset and assigns treatments designed to mitigate the risk. Assets in the BFMC area identified as requiring treatments are listed in the assets table. Other assets within the BFMC area that were assessed as not requiring treatments within the life of this plan are listed in the appendix to the BFRMP document. The Map Ref number "NA" denotes non-spatial assets.

Treatments
Specific treatments assigned to assets in the Chifley area are listed in the treatments table and linked to the assets which they are designed to protect. Standard BFMC wide treatments (i.e. not linked to a specific asset) which occur on an ongoing basis within the BFMC area are:

- reviewing the bush fire prone land map;
- ensuring developments in the bush fire prone land comply with Planning for Bush Fire Protection;
- using the Local Environment Plans (LEPs) to control development in areas with a bush fire risk;
- paying the standard bush fire danger period as required;
- requiring permits during bush fire danger periods
- prosecution of arsonists/offenders
- investigation of bush fire cause;
- normal fire suppression activities;
- assessing and managing compliance with strategic fire-fighting resource allocation management systems;
- preparation of a S2 Operations Coordination Plan;
- fire management plans or plans of management; and
- bush fire hazard complaints.

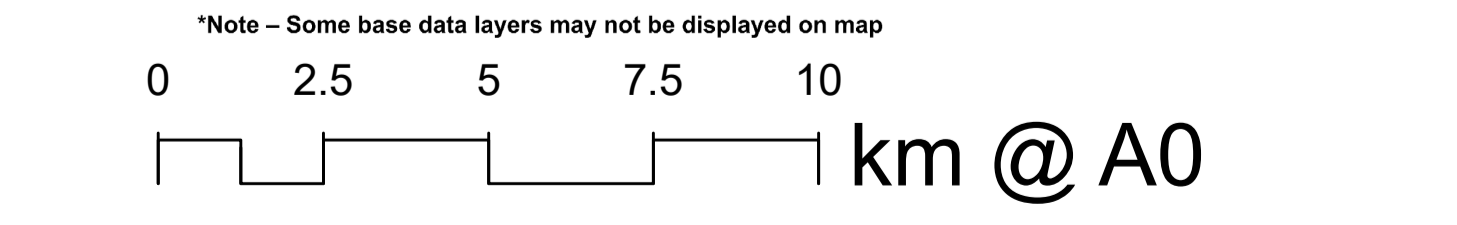
Note on LMZ: All areas not specifically mapped as an APZ, SFAZ or FEZ are considered as LMZ for this risk management plan. For areas identified by an LMZ polygon on the map, please refer to the BFRMP document for the specific land management objectives.

Zone	Purpose	Suppression Objective(s)	Zone characteristics
Asset Protection Zone	To protect human life, property and highly valued public assets and values.	To enable the safe use of Direct Attack suppression strategies within the zone. To minimise bush fire impacts on undefended assets.	As per RFS document, Standards for Asset Protection Zones.
Strategic Fire Advantage Zone	To provide strategic areas of fire protection advantage which will reduce the speed and intensity of bush fires, and reduce the potential for spot fire development. To aid containment of wildfires to existing management boundaries.	To improve the likelihood and safe use of: Parallel Attack suppression strategies within the zone, and/or Indirect Attack (back burning) in high to very high fire weather conditions within the zone. To reduce the likelihood of Crown fire development within the zone, and/or Spot fire ignition potential from the zone.	Zone width related to suppression objectives and dependent upon: - Topography - Aspect - Spotting propensity - Location of adjacent firebreaks - Mosaic pattern of treatment Assess Overall Fuel Hazard (OFH) once vegetation communities reach minimum fire thresholds within this plan. Management practices should aim to achieve mosaic fuel reduction patterns so that the majority of the SFAZ has an OFH of less than high.
Land Management Zone	To meet relevant land management objectives in areas where APZs or SFAZs are not appropriate.	As per the land management and fire protection objectives of the responsible land management agency. To reduce the likelihood of spread of fires. To undertake mosaic burning	As appropriate to achieve land management e.g. heritage and/or fire protection e.g. broad scale mosaic burning objectives.
Fire Exclusion Zone	To exclude bush fires.	N/A	Variable dependent on size of fire sensitive area requiring protection.

Assets	Suppression Objective(s)	Zone characteristics
Human - Residential	Commercial Forests	
Human - Other	Drinking Water Catchments	
Social Fire Protection	Environmental - Locally Important	
Economic - Agricultural	Environmental - Vulnerable (Species)	
Economic - Commercial	Environmental - Endangered (Species)	
Economic - Infrastructure	Cultural - Aboriginal Heritage	
Economic - Tourism and Recreational	Cultural - Other	
Economic - Mines	Cultural - Non Indigenous	

Bush Fire Management Zones	Suppression Objective(s)	Zone characteristics
Fire Exclusion Zone (FEZ)	Land Management Zone (LMZ)	
Asset Protection Zone (APZ)	Strategic Fire Advantage Zone (SFAZ)	

Base Data Layers	Suppression Objective(s)	Zone characteristics
Major Roads Sealed	Drainage Potential	
Major Roads Unsealed	Drainage Non Potential	
Secondary Road Sealed	Hydro-Line Potential	
Local Road Sealed	Hydro-Line Non Potential	
Local Road Unsealed	Contour (100m)	
Local Road Unspecified	Contour (50m)	
4WD Track Unspecified	Map Display Area	
Path	Local Government Area	
Heavy Rail	Crown Land	
Light Rail	State Forests	
Heavy Rail Siding	National Park	



Disclaimer
The Chifley BFMC makes every effort to ensure the quality of the information available on this map. Before relying on the information on this map, users should carefully evaluate its accuracy, completeness and relevance for their purposes, and should obtain any appropriate professional advice relevant to their particular circumstances.

The Chifley BFMC can not guarantee and assumes no legal liability or responsibility for the accuracy, currency or completeness of the information. Copyright: Chifley BFMC 2020.

Authorized by _____ of Chifley BFMC.
Date created: Friday, 18 December 2020
BFRR version 2.1.27.0 +S



Appendix 5: Neighbourhood Safer Places

Site	Type	Location	Suburb
Black Springs Sports Ground	Open Space	Reserve Avenue	Black Springs
Burruga Sports Ground	Open Space	Tuena Street	Burruga
Hill End Community Hall	Building	4 Beyers Avenue	Hill End
Hill End Sports Field	Open Space	Church Street	Hill End
Oberon Sports Ground	Open Space	North Street	Oberon
Rockley Public School	Building	34 Hill Street	Rockley
Sofala Community Hall	Building	19 Denison Street	Sofala
Trunkey Creek Community Hall	Building	36 Arthur Street	Trunkey Creek
Wattle Flat Public School	Building	3807 Sofala Road	Wattle Flat

Appendix Table 5.1 Neighbourhood Safer Places

Note:

Neighbourhood Safer Places are subject to annual audit which may add/remove locations from this list. Please see NSW Rural Fire Service website for the current location list.

<https://www.rfs.nsw.gov.au/plan-and-prepare/neighbourhood-safer-places>