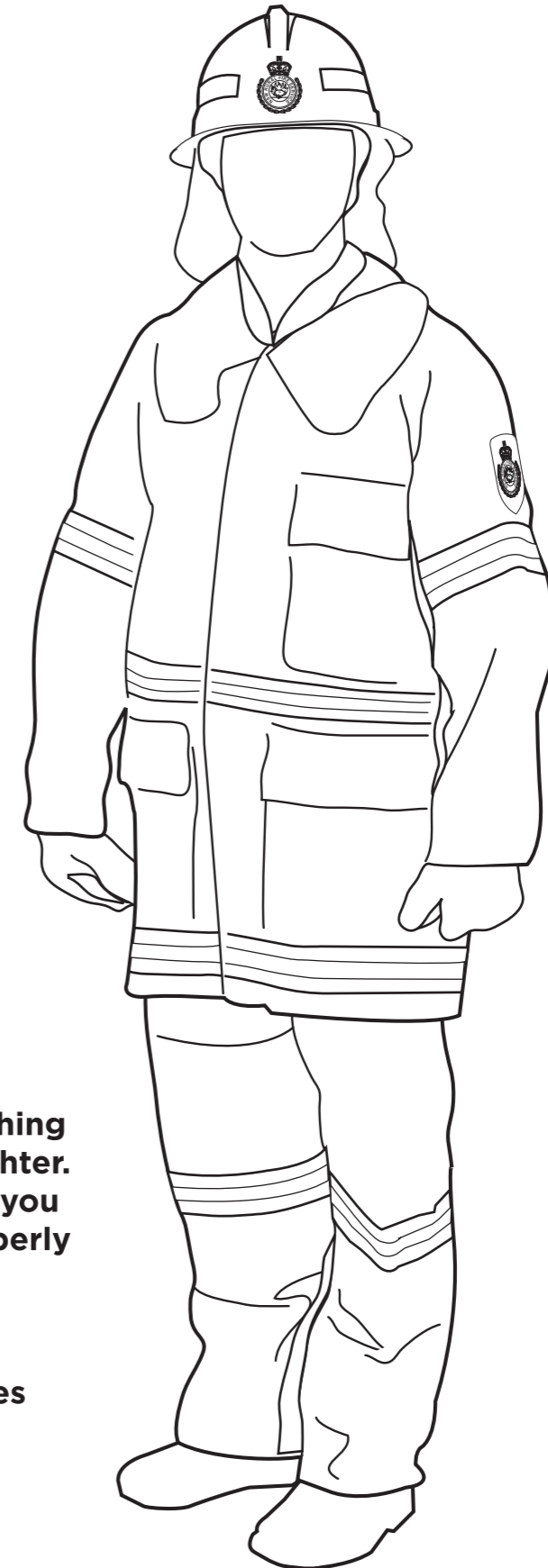
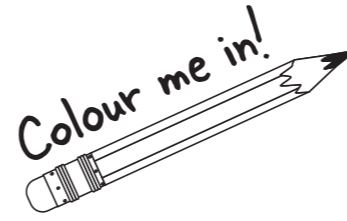


# NSW RFS Activity Book



Colour me in!

# RFS Volunteer Firefighter



**Wearing protective clothing is important for a firefighter. It is also important that you and your family are properly clothed during a fire. DO NOT WEAR SYNTHETICS! They can MELT! Wear natural fibres such as wool or cotton.**

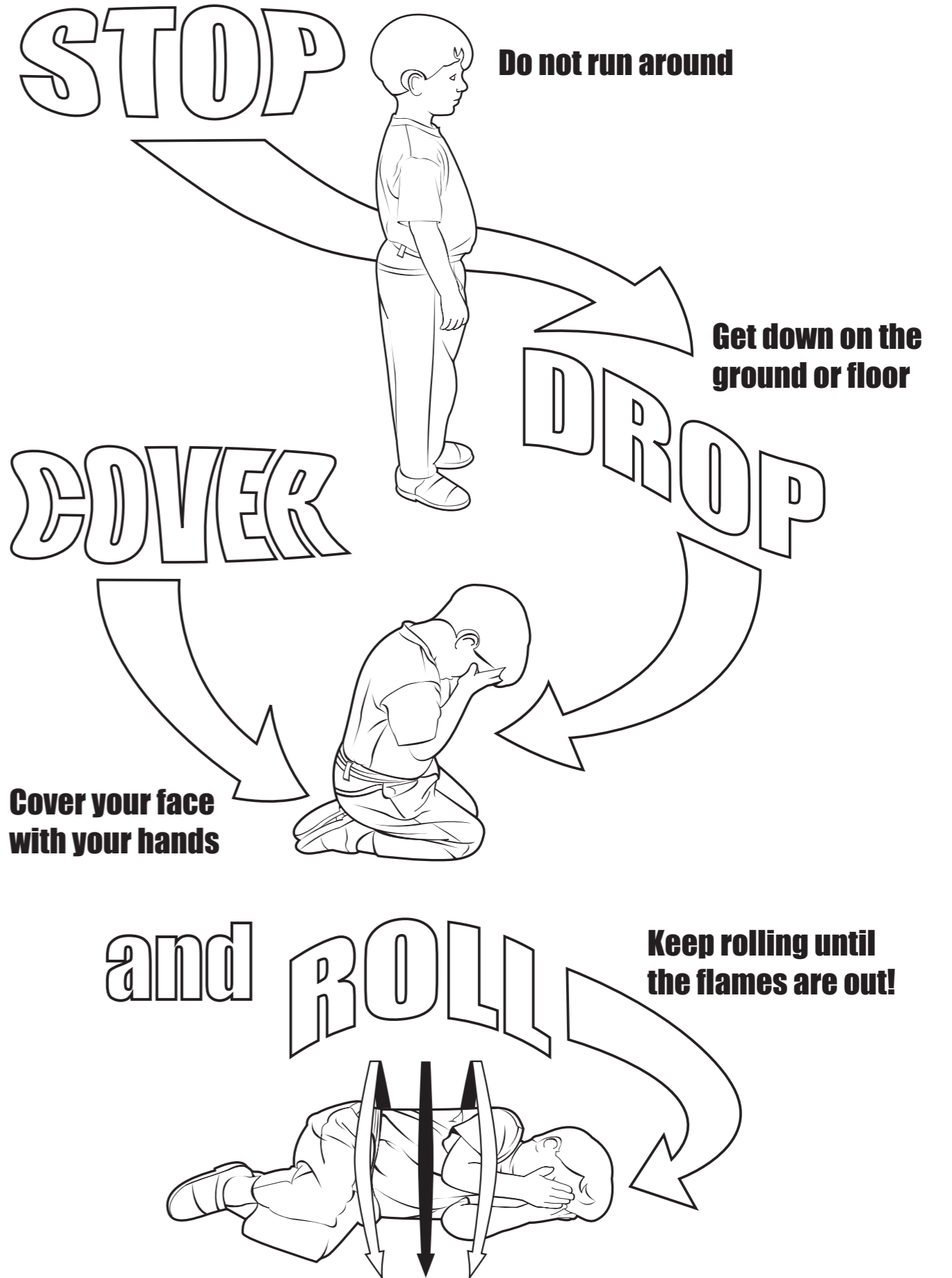
# PREPARED HOUSE



# UNPREPARED HOUSE

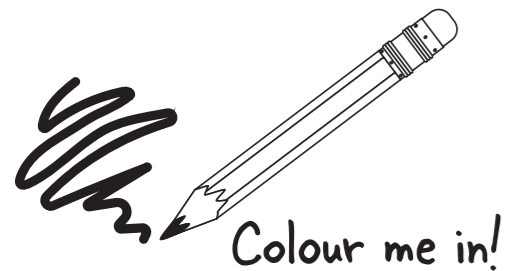
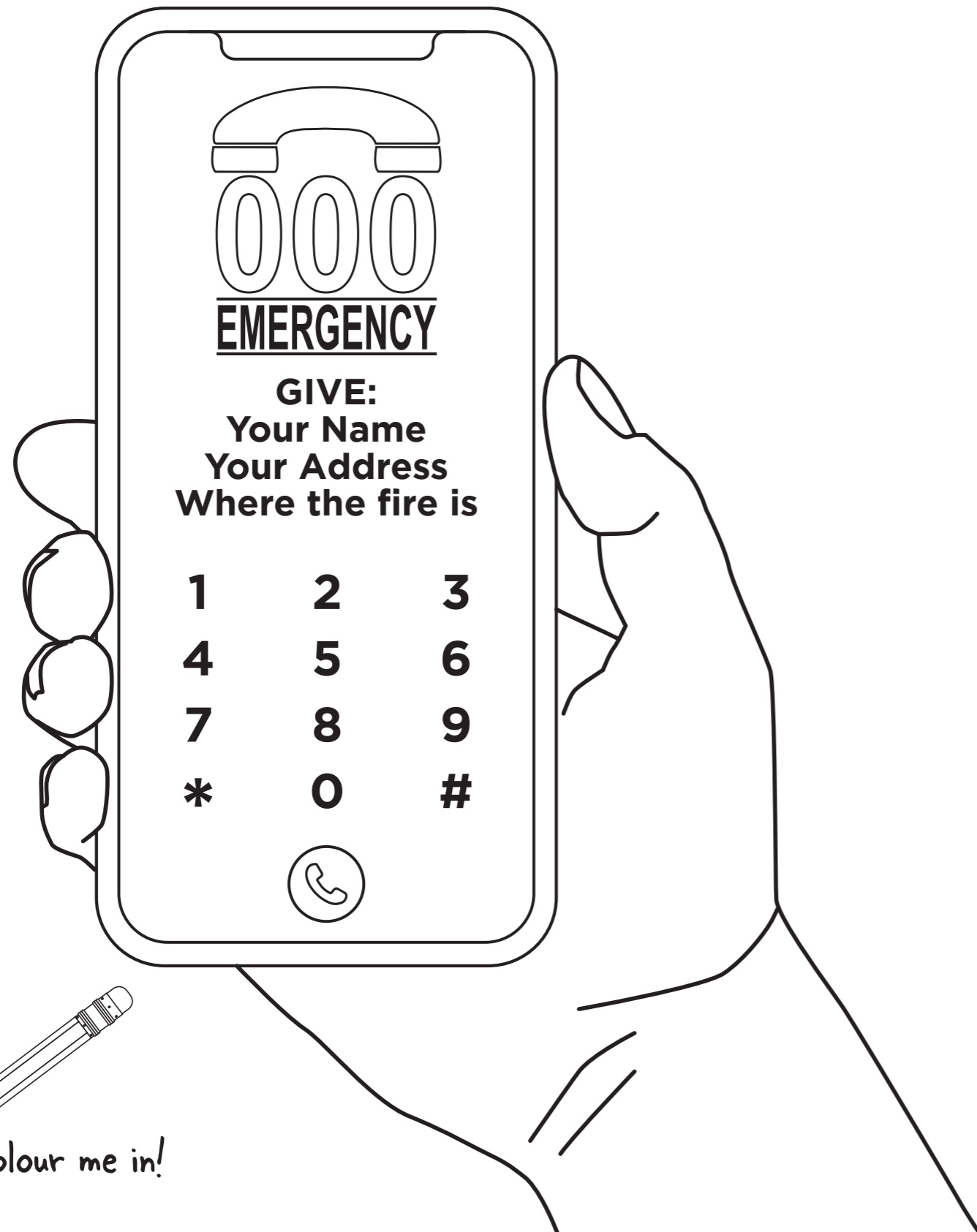


# If your clothes catch fire



# REPORT FIRES

Ring Triple Zero in an emergency



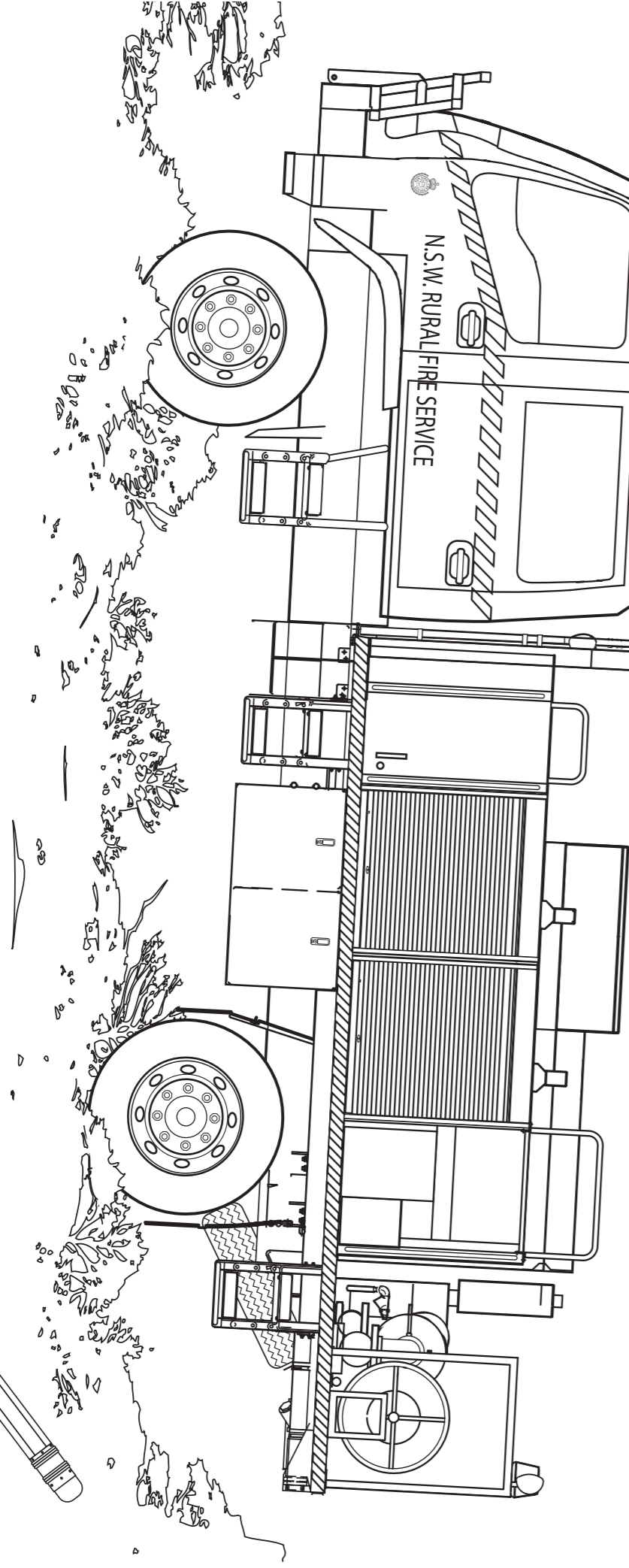
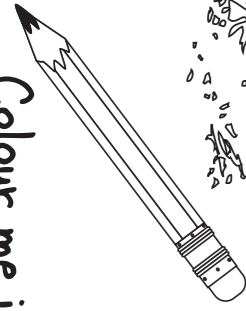
Colour me in!

## WORD PUZZLE

C	S	P	R	I	N	K	L	E	R	S	V
O	Q	I	D	G	L	B	U	S	H	M	O
M	F	I	R	E	P	W	Y	E	O	O	L
M	G	A	U	E	M	B	E	R	S	K	U
U	L	N	R	M	N	W	I	T	E	E	N
N	O	V	A	E	U	C	A	L	Y	P	T
I	V	J	L	R	P	N	Z	U	L	R	E
T	E	W	A	G	A	Z	K	P	I	O	E
Y	S	A	M	E	O	D	M	A	G	T	R
E	X	T	I	N	G	U	I	S	H	E	R
M	L	E	D	C	P	Q	E	O	T	C	M
F	N	R	O	Y	H	E	A	T	S	T	I

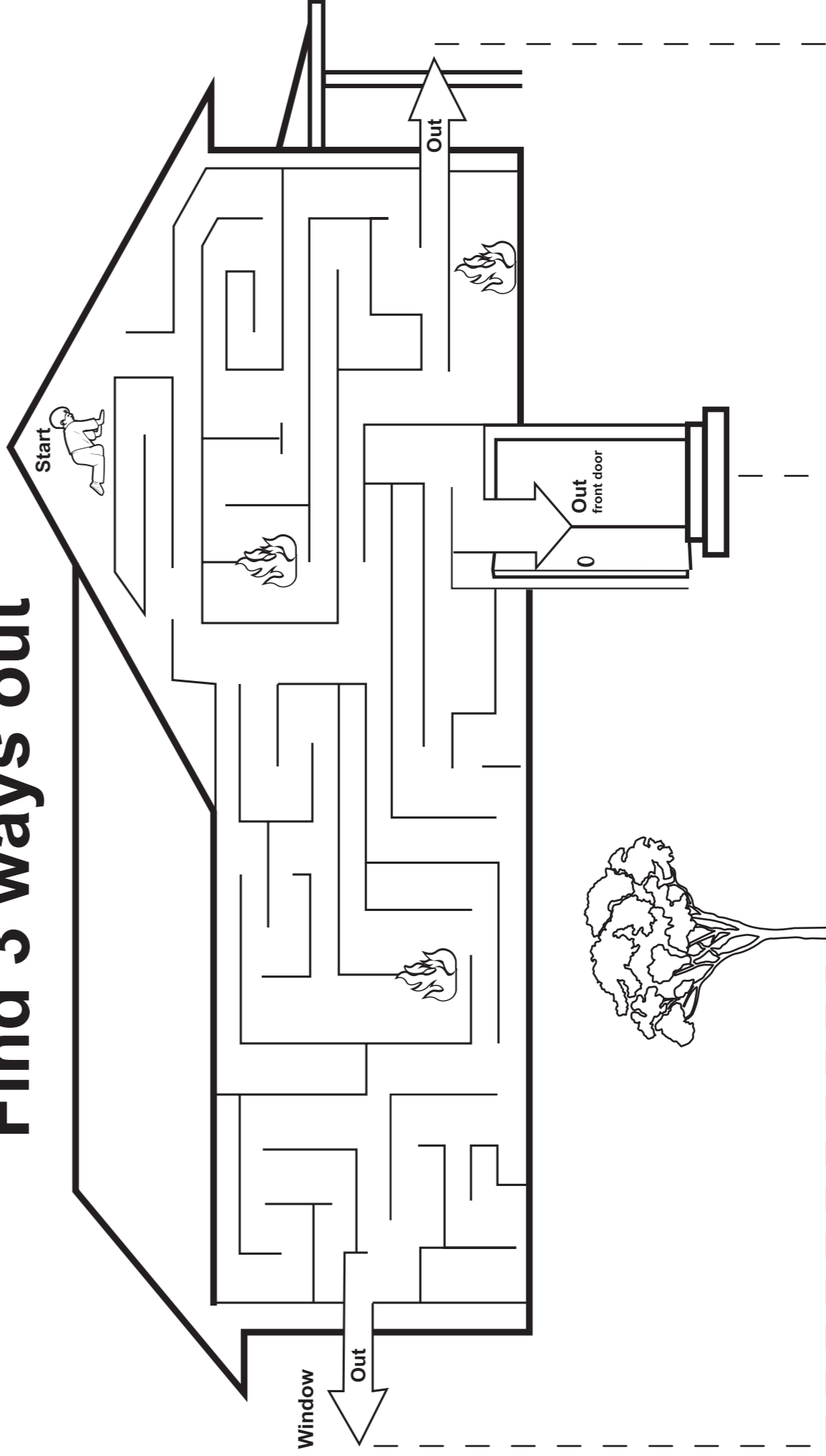
- |              |           |
|--------------|-----------|
| BUSH         | NOZZLE    |
| COMMUNITY    | PROTECT   |
| EMBERS       | PUMP      |
| EMERGENCY    | RADIO     |
| EUCALYPT     | RURAL     |
| EXTINGUISHER | SIREN     |
| HOSE         | SMOKE     |
| HEAT         | SPRINKLER |
| GLOVES       | VOLUNTEER |
| LIGHTS       | WATER     |

Colour me in!



# FIRE TANKER

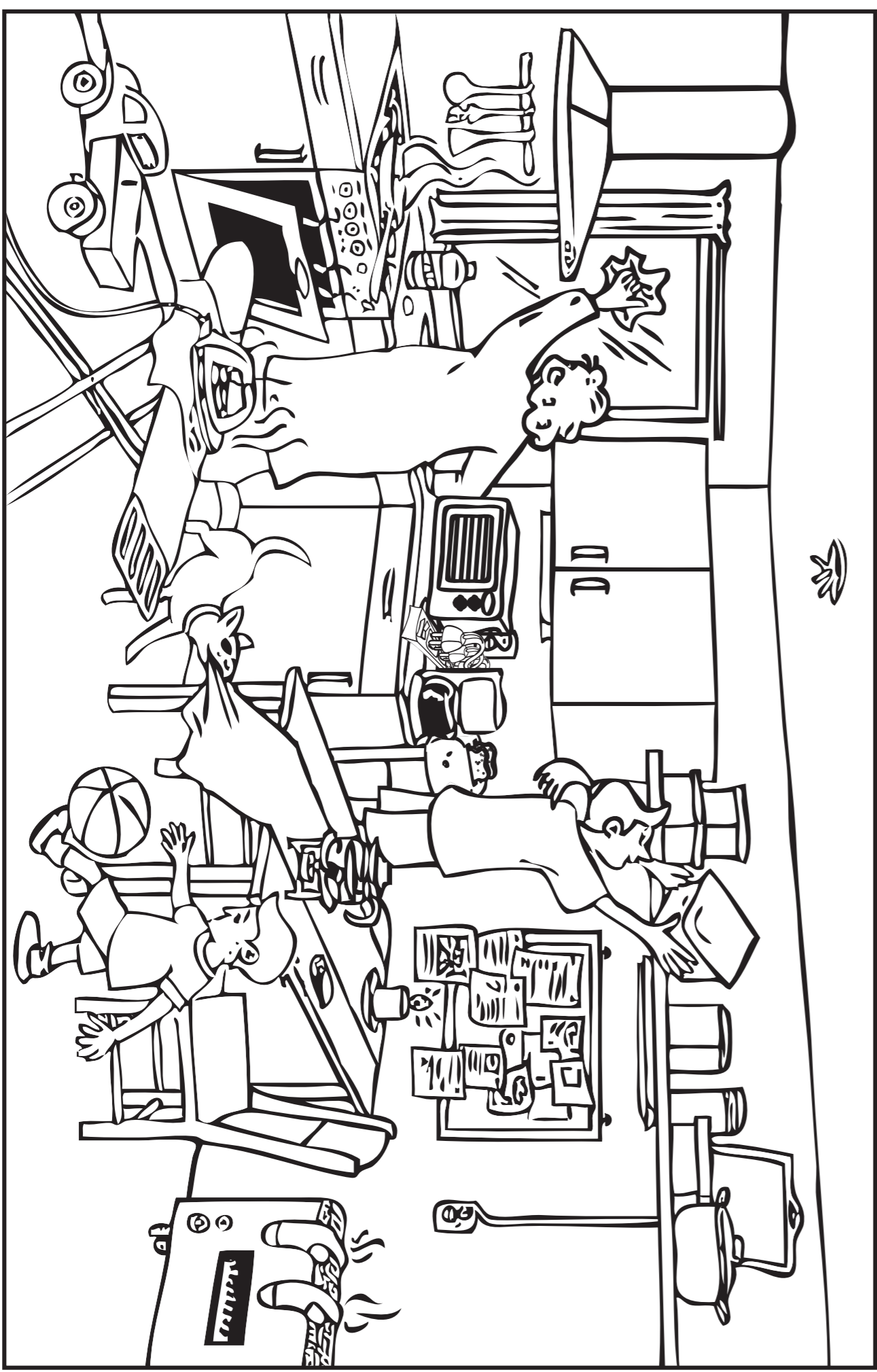
**Find 3 ways out**



**Meeting place**

**Know two ways out of every room. Choose an outside meeting place. Practice your plan regularly.**

**ANSWERS:** 1. Frypan on stove unattended and handle sticking out, 2. Open oven door, 3. Unattended iron, 4. Candle under paperwork on notice board and on tablecloth, 5. Socks on heater, 6. Coffee pot near edge of bench, 7. Overloaded power point, 8. Dog pulling tablecloth off table, 9. Coffee pot with flame under it on tablecloth, 10. Boy playing ball in the kitchen, 11. Dog in kitchen, 12. Toy truck in kitchen, 13. Girl climbing on chair, 14. Chemical bottle near stove, 15. Utensils on wall at the back of stove, 16. Light switch on wall above heater, 17. Defective smoke alarm on ceiling, 18. Curtain hanging down too close to stove.



**FIND THE FIRE HAZARDS IN THIS PICTURE HOW MANY CAN YOU FIND?**



# NSW RURAL FIRE SERVICE

Street address:  
4 Murray Rose Avenue,  
Sydney Olympic Park NSW 2127

Postal address:  
Locked Bag 17, Granville NSW 2142

Telephone: 02 8741 5555

Fax: 02 8741 5550