

***Namoi – Gwydir* Bush Fire Management Committee**

Bush Fire Risk Management Plan 2018

Prepared by the Namoi – Gwydir Bush Fire Management Committee; pursuant to section 52 of the Rural Fires Act, 1997.

Additional information or enquires on any aspect of the plan can be obtained from Gwydir Fire Control Centre at Memorial Lane, Bingara, or by telephoning (02) 6972 3667.

Table of Contents

<i>Glossary</i>	7
1. Introduction	8
1.1 Background	8
1.2 Aim and Objectives	8
1.3 Description of the Namoi-Gwydir BFMC Area	9
1.3.1 Location and land tenure	9
1.3.2 Climate and bush fire season	9
1.3.3 Population and demographic information	9
1.3.4 History of bush fire frequency and ignition cause	9
2. Identifying and Assessing the Bush Fire Risk	11
2.1 Process	11
2.2 Communication and Consultation	11
2.3 Identifying the Bush Fire Risk	12
2.3.1 Assets	12
2.3.2 Assessing the Bush Fire Risk - Consequence	13
2.3.3 Assessing the Bush Fire Risk - Likelihood	14
2.3.4 Identifying the level of risk	14
2.3.5 Evaluating the Bush Fire Risk	14
2.3.6 Prioritising Treatments	14
2.3.7 Risk Acceptability	15
3. Treating the Risk	16
3.1 Bush Fire Management Zones	16
3.2 BFMC Wide Treatments	17
3.3 Asset Specific Treatments	19
3.4 Fire Thresholds	20
3.5 Annual Works Programs	21
3.6 Implementation	21
3.7 *Local permit issuing/hazard reduction burning exclusion periods	21
4. Performance Monitoring and Reviewing	22
4.1 Review	22
4.2 Monitoring	22
4.3 Reporting	22
4.4 Performance Measurements	22
<i>Appendices</i>	23
Appendix 1 Community Participation Strategy	23
Appendix 2 Asset Register	24
Appendix 3 Maps 1 - 4	55

List of Tables

<i>Table 1.1 Land Tenure</i>	9
<i>Table 3.1 Bush Fire Management Zones: Purpose, objectives and characteristics</i>	17
<i>Table 3.2 Asset specific treatments used in the (insert name here) BFMC area</i>	19
<i>Table 3.3 Fire Thresholds for Vegetation Categories</i>	20

List of Figures

<i>Figure 2.1 Overview of the risk assessment process.....</i>	11
--	----

Authorisation

In accordance with Part 3 Division 4 of the Rural Fires Act 1997, this Plan has been prepared by the Namoi-Gwydir Bush Fire Management Committee and has been endorsed at the BFMC meeting on 11 September 2018 for submission to the Bush Fire Coordinating Committee.


Recommended



William Powell

Chairperson
Namoi-Gwydir Bush Fire Management Committee

Approved



On behalf of the
NSW Bush Fire Coordinating Committee

Amendment List

Amendment		Entered	
Number	Date	Signature	Date

Glossary

Assets: anything valued by the community which includes houses, crops, heritage buildings and places, infrastructure, the environment, businesses, and forests, that may be at risk from bush fire.

Bush Fire: a general term used to describe fire in vegetation, includes grass fire.

Bush Fire Hazard: the potential severity of a bush fire, which is determined by fuel load, fuel arrangement and topography under a given climatic condition.

Bush Fire Risk: the chance of a bush fire igniting, spreading and causing damage to the community or the assets they value.

Bush Fire Risk Management: a systematic process that provides a range of treatments which contribute to the wellbeing of communities and the environment, which suffer the adverse effects of wildfire/bush fire.

Bush Fire Threat: potential bush fire exposure of an asset due to the proximity and type of a hazard and the slope on which the hazard is situated.

Consequence: outcome or impact of a bush fire event.

Fire Fighting Authorities: the NSW Rural Fire Service, NSW Fire Brigades, the National Parks and Wildlife Service and Forests NSW.

Likelihood: the chance of a bush fire igniting and spreading.

Major Bush Fire: A bush fire which requires the attendance of multiple brigades, or causes damage to property or injury to one or more persons.

Display area: geographic area determined by the Bush Fire Management Committee which is used to provide a suitable area and scale for community participation and mapping display purposes.

Recovery costs: the capacity of an asset to recover from the impacts of a bush fire.

Risk Acceptance: an informed decision to accept the consequences and the likelihood of a particular risk.

Risk Analysis: a systematic process to understand the nature of and to deduce the level of risk.

Risk Assessment: the overall process of risk identification, risk analysis and risk evaluation.

Risk Identification: the process of determining what, where, when, why, and how something could happen.

Risk Treatment: the process of selection and implementation of measures to modify risk.

Vulnerability: the susceptibility of an asset to the impacts of bush fire.

1. Introduction

1.1 Background

Under the Rural Fires Act 1997 the Bush Fire Coordinating Committee (BFCC) must constitute a Bush Fire Management Committee (BFMC) for each area in the State, which is subject to the risk of bush fires. Each BFMC is required to prepare and submit to the BFCC a draft Bush Fire Risk Management Plan (BFRMP).

A BFRMP is a strategic document that identifies community assets at risk and sets out a five-year program of coordinated multi-agency treatments to reduce the risk of bush fire to the assets. Treatments may include such things as hazard reduction burning, grazing, community education, fire trail maintenance and establishing community fireguard groups.

Annual programs to implement the treatments identified in this plan will be undertaken by the relevant land managers and fire fighting authorities.

In exercising its functions under the Rural Fires Act 1997, including the preparation of a draft bush fire risk management plan, the Namoi-Gwydir BFMC is required to have regard to the principles of ecologically sustainable development (ESD).

This document and the accompanying maps together form the BFRMP for the Namoi-Gwydir BFMC area.

This BFRMP has been prepared by the Namoi-Gwydir BFMC and covers both public and private lands. This BFRMP must be reviewed and updated within each successive five-year period from the constitution of the BFMC.

The BFCC recognises that climate change has the potential to increase bush fire risk. The risk assessment process applied in this BFRMP is based on current climatic conditions. The BFCC will monitor information on climate change and will modify the process when necessary.

1.2 Aim and Objectives

The **aim** of this BFRMP is to minimise the risk of adverse impact of bush fires on life, property and the environment.

The **objectives** of this BFRMP are to:

- reduce the number of human-induced bush fire ignitions that cause damage to life, property and the environment;
- manage fuel to reduce the rate of spread and intensity of bush fires, while minimising environmental/ecological impacts;
- reduce the community's vulnerability to bush fires by improving its preparedness; and
- effectively contain fires with a potential to cause damage to life, property and the environment.

1.3 Description of the Namoi-Gwydir BFMC Area

1.3.1 Location and land tenure

The Namoi-Gwydir BFMC area is located in North West NSW New South Wales and includes the Local Government Areas of Gwydir (GSC), Narrabri (NSC) and Moree Plains (MPSC).

The area covered by the Namoi-Gwydir BFMC is 40,115 square kilometres (9,122 GSC 13,065 NSC and 17,928 MPSC) and includes the land tenures outlined in Table 1.1.

Land Manager	% of BFMC area
National Parks & Wildlife Service	5.83
Forests NSW	5.00
Department of Lands	0.58
Local Government	0.21
Private	88.36

Table 1.1 Land Tenure

1.3.2 Climate and bush fire season

The typical/average climate in the Namoi-Gwydir BFMC area is characterised by warm to hot summers, moderate and variable rainfall and a winter of cool clear days and cold frosty nights, with often a rapid transition of perhaps a month from summer to winter. Temperature: Average maximum temperatures range from 17°C-19°C in the winter and 35°C – 40°C in the summer months.

Rainfall ranges between 600mm to 700mm per annum across the BFMC area.

Prevailing weather conditions associated with the bush fire season in the Namoi-Gwydir BFMC area are north-westerly winds accompanied by high daytime temperatures and low relative humidity. Dry lightning storms occur frequently during the bush fire season. The Bush Fire Danger Period runs from 1st October through to 30th March, however prevailing weather has the potential to extent outside the this normal timeframe

1.3.3 Population and demographic information

The population of the Namoi-Gwydir BFMC area is approximately 33,518 (2016 Census) people. The major population centres are Bingara, Warialda, Narrabri and Moree and villages Ashley, Baan Baa, Bellata, Biniguy, Boggabilla, Boggabri, Boomi, Coolatai, Crooble, Croppa Creek, Garah, Gravesend, Gwabegar, Mungindi, North Star, Pallamallawa, Pilliga, Toomelah, Weemelah and Wee Waa.

1.3.4 History of bush fire frequency and ignition cause

The Namoi-Gwydir BFMC area has on average 440 bush fires per year, of which 10 on average can be considered to be major fires.

The main source of ignition for larger fires in the Namoi-Gwydir BFMC area is lightning. These fires usually occur during summer as dry storm cells move throughout the BFMC area.

Other causes of fires are farm machinery, arson and escaped burns both legal and illegal.

2. Identifying and Assessing the Bush Fire Risk

2.1 Process

The Australia/New Zealand Standard *AS/NZS 4360: 2004 Risk Management* was used as the basis for the risk assessment process. See Figure 2.1 for the steps involved. For a detailed description of the process undertaken see the Bush Fire Risk Management Planning Guidelines for Bush Fire Management Committees on the RFS website: www.rfs.nsw.gov.au.

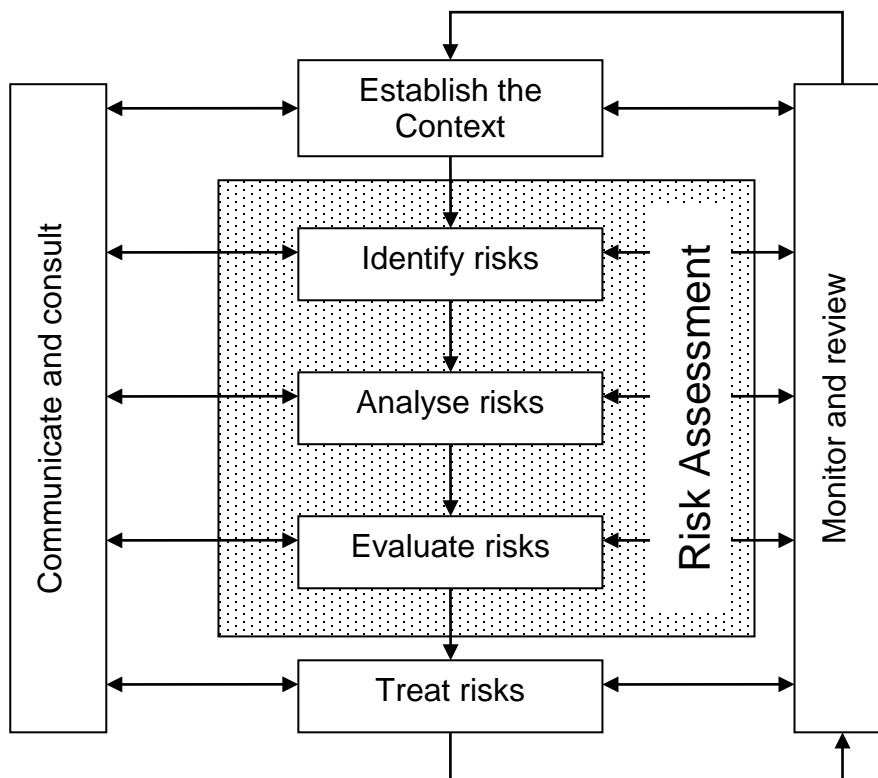


Figure 2.1 Overview of the risk assessment process

2.2 Communication and Consultation

Community participation is an integral part of risk management. The Community Participation Strategy involved developing and implementing a process to address the needs, issues and concerns of stakeholders within the BFMC area in regards to the BFRMP. See **Appendix 1** for the Community Participation Strategy used by the Namoi-Gwydir BFMC in preparing this BFRMP.

2.3 Identifying the Bush Fire Risk

Identifying the level of bush fire risk firstly involved identifying important community assets considered to be at risk from bush fire in the Namoi-Gwydir BFMC area, and then assessing the likelihood and consequence ratings.

2.3.1 Assets

BFMC members and the community, including RFS volunteers, identified assets within the Namoi-Gwydir BFMC that they believed were at risk of bush fire.

The assets were divided into four asset types:

Human settlement

- Residential areas including urban bushland interface areas and rural properties;
- Special Fire Protection areas including schools, hospitals, nursing homes, and tourist facilities; and
- Other human settlement areas including commercial and industrial areas where distinct from major towns.

Economic

- Agricultural; e.g. major silos, regional saleyards, cropping/grazing land;
- Commercial/industrial e.g. major industries, waste treatment plants, sawmills;
- Infrastructure e.g. large power lines, gas and oil pipelines, railway lines, electricity substations, communication facilities;
- Tourist and recreational e.g. tourist sites and facilities, resorts, retreats;
- Mines;
- Commercial forests e.g. pine plantations, eucalypt plantations and commercial native forests; and
- Drinking water catchments.

Environmental

- Threatened species, populations and ecological communities and Ramsar wetlands;
- Locally important species and ecological communities, such as species and ecological communities especially sensitive to fire.

Cultural

- Aboriginal significance – Aboriginal places and items of significance;
- Non-indigenous heritage – places and items arising from the early occupation of NSW by European or other non-indigenous settlers; and
- Other cultural assets – community halls, clubs and recreational facilities.

See Appendix 2 for the full list of assets identified in the Namoi-Gwydir BFMC area. See maps 1 – 3 for the location of assets to be treated under this BFRMP.

2.3.2 Assessing the Bush Fire Risk - Consequence

Once the assets were identified, the consequence of a bush fire impacting on these assets was assessed.

See Appendix 2 for the consequence ratings assigned to each asset identified in the Namoi-Gwydir BFMC area.

The different asset types had different assessment processes used to determine the consequence. These processes are identified below.

Human settlement

A potential fire behaviour model using vegetation type, slope and separation distance was used to produce a threat rating for human settlement assets. The vulnerability of the asset to a bush fire was also assessed and a rating assigned. These ratings were then used to assess the consequence of a bush fire impacting upon a human settlement asset.

Special Fire Protection (SFP) assets were considered inherently more vulnerable to bush fire due to mobility capacity, knowledge or other issues relating to their inhabitants, (e.g. the elderly, infirm, children or tourists) and therefore stricter requirements for vulnerability assessment and rating were applied.

Economic

The level of economic impact e.g. local, regional or state, as well as the economic recovery costs (how long and complicated a financial recovery will be) of the asset were identified. These ratings were used to assess the consequence of a bush fire impacting upon an economic asset.

Environmental

Environmental assets with known minimum fire threshold were assessed to determine if they were at risk of a bush fire within the 5 year life of the BFRMP using fire history data. Those environmental assets which were within or above the fire threshold were not assessed in the BFRMP, as the negative impact of a fire within the 5 year period was determined as being low and may even be of benefit to the asset and surrounding habitat.

The vulnerability of an environmental asset was determined by its conservation status and its geographic extent (distribution across the landscape). Vulnerability and

potential impact of bush fire were used to assess the consequence of a bush fire impacting upon an environmental asset.

Several Endangered Ecological Communities were identified as occurring within the Namoi-Gwydir BFMC area, however these have not been mapped and assessed due to a lack of sufficient spatial information. Land managers need to take this into consideration before undertaking approved hazard reduction activities.

Cultural

For non-indigenous historical, Aboriginal and other cultural assets a potential fire behaviour model using fuel load, slope and proximity was used to produce a threat rating. The physical vulnerability of the asset to a bush fire was also assessed. These ratings were then used to assess the consequence of a bush fire impacting upon a cultural asset.

2.3.3 Assessing the Bush Fire Risk - Likelihood

For all asset types the likelihood of a bush fire occurring was assessed. This involves considering fire history, including ignition cause and patterns, known fire paths, access, containment potential and potential fire run (size of the vegetated area). See Appendix 2 for the likelihood ratings assigned to each asset identified in the Namoi-Gwydir BFMC area.

2.3.4 Identifying the level of risk

The consequence and likelihood ratings were then used to identify the level of risk. See Appendix 2 for the risk ratings assigned to each asset identified in the Namoi-Gwydir BFMC area.

2.3.5 Evaluating the Bush Fire Risk

Once the risk ratings for each asset were identified, they were evaluated to:

- a) confirm that risk levels identified in the risk analysis process are appropriate and reflect the relative seriousness of the bush fire risk;
- b) identify which assets require treatments; and
- c) identify treatment priorities.

2.3.6 Prioritising Treatments

No organisation has limitless resources to deal with adverse risk. It is therefore necessary to define priorities. The bush fire risk ratings determined were used to prioritise the risk treatments, i.e. areas of extreme risk were considered first for treatment, then very high, then high then medium then low. It was also necessary to prioritise within the risk levels i.e. determining which of the high risks was the most serious. This was done on the basis of the consequence and likelihood ratings.

2.3.7 Risk Acceptability

Risks below a certain level were assessed as not requiring treatment within the life of this plan. This is due to a combination of risk priority and capacity to undertake the works. Within the Namoi-Gwydir BFMC area the level of acceptability is high. Areas of medium or low risk are likely to be managed by routine procedures and so do not require a specific application of resources.

3. Treating the Risk

3.1 Bush Fire Management Zones

Bush Fire Management Zones were identified within the Namoi-Gwydir BFMC area and mapped (see maps 1 – 3). These zones identify the fire management intent for a specific area. See Table 3.1 for descriptions of the zones and their purposes. The four categories of Bush Fire Management Zones are:

- Asset Protection Zone (APZ);
- Strategic Fire Advantage Zone (SFAZ);
- Land Management Zone (LMZ); and
- Fire Exclusion Zone (FEZ).

Some of these zones (usually Land Management Zones) may be further classified within this category by the land manager, e.g. LMZ –Heritage Management Zone (NPWS).

Zone	Purpose	Suppression Objective(s)	Zone characteristics
Asset Protection Zone	To protect human life, property and highly valued public assets and values.	To enable the safe use of Direct Attack suppression strategies within the zone. To minimise bush fire impacts on undefended assets.	As per RFS document <i>Standards for Asset Protection Zones</i> .
Strategic Fire Advantage Zone	To provide strategic areas of fire protection advantage which will reduce the speed and intensity of bush fires, and reduce the potential for spot fire development; To aid containment of wildfires to existing management boundaries.	To improve the likelihood and safe use of: Parallel Attack suppression strategies within the zone. And/or Indirect Attack (back burning) in high to very high fire weather conditions within the zone. To reduce the likelihood of: Crown fire development within the zone. And/or Spot fire ignition potential from the zone.	Zone width related to suppression objectives and dependent upon: • Topography • Aspect • Spotting propensity • Location of adjacent firebreaks • Mosaic pattern of treatment Assess Overall Fuel Hazard (OFH) once vegetation communities reach minimum fire thresholds within this plan. Management practices should aim to achieve mosaic fuel reduction patterns so that the majority of the SFAZ has an OFH of less than high.

Land Management Zone	To meet relevant land management objectives in areas where APZs or SFAZs are not appropriate.	As per the land management and fire protection objectives of the responsible land management agency. To reduce the likelihood of spread of fires. To undertake mosaic burning	As appropriate to achieve land management e.g. heritage and/or fire protection e.g. broad scale mosaic burning objectives.
Fire Exclusion Zone	To exclude bush fires.	N/A	Variable dependant on size of fire sensitive area requiring protection.

Table 3.1 Bush Fire Management Zones: Purpose, objectives and characteristics

NB: OFH refers the Overall Fuel Hazard Guide as described in the document published by (Dept. of Sustainability and Environment 3rd ed. 1999 & NPWS version); State-wide procedures for assessment of fuel hazard will be developed in conjunction with the BFCC.

Note: All areas that are not mapped or described as APZs or SFAZs are considered as LMZs.

For the purpose of the Bush Fire Environmental Assessment Code:

1. Plantations that are approved under the *Plantations & Reafforestation Act 1999* after closure of the public exhibition period for this BFRMP are considered to be identified in this BFRMP; and
2. Retained vegetation within the aforementioned plantations is considered to be a Strategic Fire Advantage Zone identified in the text of this BFRMP as long as it meets the suppression objectives for SFAZs included in the BFRMP, and is not mapped or otherwise described as a Fire Exclusion Zone in the BFRMP.

3.2 BFMC Wide Treatments

BFMC wide treatments are activities which reduce the overall bush fire risk within the BFMC area and are undertaken on an ongoing basis as part of normal business. These treatments are not linked to specific assets in the BFRMP, rather they are applied across all or part of the BFMC area as designated by legislation or agency policy. BFMC wide treatments include the following:

- **Reviewing the bush fire prone land map**
 These maps identify bush fire prone land and are used to trigger whether a development application is assessed using *Planning for Bush Fire Protection*¹.
- **Ensuring developments in bush fire prone land comply with *Planning for Bush Fire Protection***
 This assessment process requires new applications for development to include bush fire protection measures.

¹ NSW Rural Fire Service 2006 *Planning for Bush Fire Protection: A guide for councils, planners, fire authorities and developers.*

- **Using the Local Environment Plan/s (LEPs) to control developments in areas with a bush fire risk**

LEPs can be used to exclude development in extreme bush fire risk areas or where bush fire protection measures cannot be incorporated.

- **Varying the standard bush fire danger period as required**

In years where the weather is particularly adverse the bush fire danger period may be brought in early or extended. This is assessed every year by the BFMC.

- **Requiring permits during the bush fire danger period**

In the bush fire danger period a fire safety permit is required to light a fire in the open. Permits specify conditions such as fire fighting equipment that must be on site, or restrict burns based on weather conditions.

- **Prosecution of arsonists/offenders**

Under the *Rural Fires Act 1997* persons may be prosecuted for breaching the conditions on a fire permit, lighting a fire during a Total Fire Ban, allowing fire to escape their property, or other breaches of the Act.

- **Investigation of bush fire cause**

All bush fires which do not have a known cause are investigated to identify how they started.

- **Normal fire suppression activities**

Responding to bush fire is a normal business activity for the fire fighting authorities.

- **Assessing and managing compliance with strategic fire fighting resource allocation provisions**

Strategic fire fighting resource allocation provisions is the process used to identify the number of stations, brigades and appliances required in an area, and considers members, training, assets and hazards.

- **Preparation of a S52 Operations Coordination Plan**

The Operations Coordination Plan is prepared biannually and sets out how coordinated fire fighting will occur. It includes specific operational restrictions on fire fighting techniques in certain areas, where fires will be managed from, and how agencies involved can communicate during operations.

- **Fire Management Plans or Plans of Management**

Some land management agencies have developed fire management plans or plans of management with specific fire or fuel management strategies, for example a Forests NSW Regional Fuel Management Risk Plan, a NPWS Fire Management Strategy. These publicly exhibited plans form the basis for operational fire planning on public parks, reserves and forests.

- **Bush Fire Hazard Complaints**

If someone is concerned about possible bush fire hazards on a neighbouring property or any other land, then this can be reported to the RFS Commissioner or

their local RFS Fire Control Centre. The complaint will be investigated and may result in a notice being issued to the landowner or manager to reduce the hazard.

3.3 Asset Specific Treatments

There are five broad strategy groups available to treat the bush fire risk to assets identified in the BFRMP.

The types of asset specific treatments in each strategy group used in the Namoi-Gwydir BFMC area are listed below. A full list of the treatment strategies in the Namoi-Gwydir BFMC area are in Appendix 3.

Strategy	Targeted treatments used in the <i>Namoi-Gwydir</i> BFMC area
Ignition Management	To manage and control ignition sources through the use of Fire Safety Permits and Total Fire Ban days.
Hazard Reduction	To reduce the amount of available fuels using mechanical means or prescribed burning.
Community Education	To provide the community with information to make informed decisions needed to prevent, mitigate and survive bush fires.
Property Planning	Use of Bush Fire Prone Land Map to determine developments that shall be referred to the RFS for assessment under <i>Planning for Bush Fire Protection</i>
Preparedness	Preparation biannually of s52 Operations and Coordination Plan. Individual agency fuel management and operations plans.
Other	Treatments for Commonwealth Land.

Table 3.2 Asset specific treatments used in the (insert name here) BFMC area

3.4 Fire Thresholds

The vegetation in the Namoi-Gwydir BFMC area was classified into fire threshold categories (Table 3.3).

Vegetation formation	Minimum SFAZ Threshold	Minimum LMZ Threshold	Maximum Threshold	Notes
Rainforest	NA	NA	NA	Fire should be avoided.
Alpine complex	NA	NA	NA	Fire should be avoided.
Wet Sclerophyll forest (shrubby subformation)	25	30	60	Crown fires should be avoided in the lower end of the interval range.
Wet Sclerophyll forest (grassy subformation)	10	15	50	Crown fires should be avoided in the lower end of the interval range.
Grassy woodland	5	8	40	Minimum interval of 10 years should apply in the southern Tablelands area. Occasional intervals greater than 15 years may be desirable.
Grassland	2	3	10	Occasional intervals greater than 7 years should be included in coastal areas. There was insufficient data to give a maximum interval; available evidence indicates maximum intervals should be approximately 10 years.
Dry sclerophyll forest (shrub/grass subformation)	5	8	50	Occasional intervals greater than 25 years may be desirable.
Dry sclerophyll forest (shrub subformation)	7	10	30	Occasional intervals greater than 25 years may be desirable.
Heathlands	7	10	30	Occasional intervals greater than 20 years may be desirable.
Freshwater wetlands	6	10	35	Occasional intervals greater than 30 years may be desirable.
Forested wetlands	7	10	35	Some intervals greater than 20 years may be desirable.
Saline wetlands	NA	NA	NA	Fire should be avoided.
Semi-arid woodlands (grassy subformation)	6	9	No max	Not enough data for a maximum fire interval.
Semi-arid woodlands (shrubby subformation)	10	15	No Max	Not enough data for a maximum fire interval.
Arid shrublands (chenopod subformation)	NA	NA	NA	Fire should be avoided.
Arid shrublands (acacia subformation)	10	15	No Max	Not enough data for a maximum fire interval.

Table 3.3 Fire Thresholds for Vegetation Categories

3.5 Annual Works Programs

The land management agencies and fire fighting authorities responsible for implementing the treatments identified in this plan will include those treatments in their annual works programs detailing how, when, and where the required activities will be undertaken.

3.6 Implementation

When the treatments identified in this BFRMP are implemented there are a number of issues that need to be considered by the responsible agency including environmental assessments and approvals, smoke management and prescribed burn plans.

3.7 *Local permit issuing/hazard reduction burning exclusion periods

In the Namoi-Gwydir BFMC area the issuing of permits/hazard reduction burning is not permitted during the week/weeks covering the Christmas/New Year period.

This would normally be from 22nd December to 2nd January. The reason for this BFMC Approved strategy is due to the reduced number of fire fighters available during this period of the year.

4. Performance Monitoring and Reviewing

4.1 Review

This BFRMP must be reviewed and updated within each successive five-year period from the constitution of the BFMC. The Namoi-Gwydir BFMC will also review this plan as necessary to account for any changes in context or risk. This may be triggered by a range of circumstances, including but not limited to:

- changes to the BFMC area, organisational responsibilities or legislation;
- changes to the bush fire risk in the area; or
- following a major fire event.

4.2 Monitoring

The BFMC is required to monitor progress towards the completion of treatment works listed in the BFRMP, and the timeliness of the works.

4.3 Reporting

The BFMC is required to report annually to the BFCC on its progress in implementing the bush fire risk management activities identified in this plan.

4.4 Performance Measurements

State wide performance measurements which are linked to the BFRMP have been identified by the BFCC. All BFMCs must use these to monitor and report on their success in reducing the bush fire risk in their BFMC area.

Appendices

Appendix 1 Community Participation Strategy

Date	Target Audience	Method of communication	Method of notification	Key messages/ purpose	Resources required	Responsibility
1 Jan 2017	BFMC Sub Committee	Meeting	Email	Stakeholder Contribution	2010 BFMP	NSW RFS
3 Feb 2017	BFMC Sub Committee	Email/feed back	Email	Review of risk register and treatments	Draft revised risk register	NSWRFS FRNSW SF DECC Dept. Lands DPI
3 May 2017	BFMC	BFMC Meeting	Email	Update of BFRMP progress	Draft BFRMP and Risk Register	NSWRFS
21 June 2017	LGAs	SLA Meeting	Email	Updated BFRMP for comment	Draft BFRMP and Risk Register	NSWRFS LGA
21 June 2017	Namoi Gwydir Team Senior Management Team	SMT Meeting	Email	Updated BFRMP for comment	Draft BFRMP and Risk Register	NSWRFS
23 June 2017	Namoi Gwydir Staff	Email	Email	Copy of BFRMP for review	Draft BFRMP and Risk Register	NSWRFS
1 July 2017	Gwydir Community	Orange festival	Community Engagement event	Introduce BFRMPs Identify assets Treatment options Community responsibilities	Draft BFRMP and Risk Register	NSWRFS
19 July 2017	Namoi Gwydir Staff	Staff meeting	Outlook – phone	Update progress of BFRMP and comment.	Draft BFRMP and Risk Register	NSWRFS
11 August 2017	Mines Group	Mines meeting	Email	Risk review and mines responsibility with the BFRMP	Draft BFRMP and Risk Register	NSWRFS
12 Sept	BFMC	BFMC Meeting	Email	Review draft BFRMP for public display	Draft BFRMP and Risk Register	NSWRFS
1 Nov to 17 Dec 2017	General Public	Display	Print advertising / Social media	Feedback to BFMC to prepare final BFRMP	Printing and distribution	NSWRFS
20 Dec 2017	BFMC	Submissions Received	Various	Complete review of submissions received and action accordingly.	Community submissions.	BFMC
Various	RFS Brigades	AGMs	Agendas	Contribution to BFRMP	BFRMP Presentation	Namoi Gwydir Team

Appendix 2 Asset Register

Appendix 2 Asset Register and Treatments Register															
Priority (Risk Rating)	Asset ID	Asset Name	Asset Location	MDA	Class	Subclass	Strategy	Treatment ID	Action Description	Comment	Responsible Agencies	Other RA	Support Agencies	Other SA	Treatment Year
1B	1	Broadcast Australia Facility Mt. Kaputar	Mt. Kaputar National Park	Narrabri	Economic	Infrastructure	Preparedness	6	Create and Implement Site Fire Management Strategy	Create and Implement Fire Management Strategy. Lessee of site in coordination with Crown Lands and NPWS.	Other	Site Lessee	TI CL;OEH; RFS		17/18, 18/19, 19/20, 20/21, 21/22
1C	2	Gwabegar	Gwabegar NSW	Narrabri	Human Settlement	Residential	Community Education	7	Conduct Fire Safety Presentation at School	Conduct Fire Safety Presentation at Gwabegar Public School every two years.	RFS				17/18, 19/20, 21/22
							Property Planning	8	Implement Community Protection Plan		RFS	TI CL;LGA		17/18, 18/19, 19/20, 20/21, 21/22	
1C	3	The Governor Radio Repeater Site	Mt. Kaputar National Park	Narrabri	Economic	Infrastructure	Preparedness	6	Create and Implement Site Fire Management Strategy	Create and Implement Fire Management Strategy. Lessee of site in coordination with Crown Lands and NPWS.	Other	Site Lessee	TI CL;OEH; RFS		17/18, 18/19, 19/20, 20/21, 21/22
2A	4	Kaputar Road	Kaputar Road 2-7kms from turn off	Narrabri	Human Settlement	Residential	Community Education	11	Undertake targeted community engagement activities	Areas are targeted as part of ongoing local and State Public Awareness/Education campaigns including newspapers, radio, and the internet.	RFS		LGA;OEH		17/18, 18/19, 19/20, 20/21, 21/22

							Hazard Reduction	10	Conduct Strategic Hazard Reduction	Conduct, as required, hazard reduction in areas that will result in reduced fire impact on the assets.	Private;RFS		TI CL;LGA		18/19, 20/21
2A	5	ARTC Signalling and Cable Infrastructure	Rail Corridor between Turrawan and Narrabri	Narrabri	Economic	Infrastructure	Hazard Reduction	9	Implement ARTCs vegetation management program	Implement ARTCs vegetation management program.	ARTC		RFS		17/18, 18/19, 19/20, 20/21, 21/22
2A	6	Warialda	Warialda Village	Gwydir North	Human Settlement	Residential	Hazard Reduction	12	Mechanical Hazard Reduction in APZs		LGA				18/19, 19/20, 20/21, 21/22
							Property Planning	15	Implement Community Protection Plan		FRNSW;RFS	TI CL;LGA			
2A	7	Warialda High School	Apollo Ave Warialda	Gwydir North	Human Settlement	Special Fire Protection	Community Education	14	Facilitate Emergency Fire Relocation Plan.	Facilitate the creation and implementation of an emergency evacuation plan	FRNSW;RFS; Other	DET			17/18, 18/19, 19/20, 20/21, 21/22
							Hazard Reduction	13	Undertake Strategic Hazard Reduction		FRNSW	TI CL;LGA; RFS		17/18, 18/19, 19/20, 20/21, 21/22	
							Property Planning	15	Implement Community Protection Plan		FRNSW;RFS	TI CL;LGA			
2A	8	Toolimbah Repeater	15km west of Warialda	Gwydir North	Economic	Infrastructure	Property Planning	16	Create and Implement Site Management Plan	Create and Implement Site Management Plan	Other	Site Lessee	LGA;RFS		17/18, 18/19, 19/20, 20/21, 21/22

2A	9	Warialda Hospital	Long St Warialda	Gwydir North	Human Settlement	Special Fire Protection	Hazard Reduction	13	Undertake Strategic Hazard Reduction		FRNSW		TI CL;LGA; RFS		17/18, 18/19, 19/20, 20/21, 21/22
							Property Planning	15	Implement Community Protection Plan		FRNSW;RFS		TI CL;LGA		
2A	10	Warialda Pre School	Queen Street Warialda	Gwydir North	Human Settlement	Special Fire Protection	Property Planning	15	Implement Community Protection Plan		FRNSW;RFS		TI CL;LGA		
							Community Education	14	Facilitate Emergency Fire Relocation Plan.	Facilitate the creation and implementation of an emergency evacuation plan	FRNSW;RFS; Other	DET		17/18, 18/19, 19/20, 20/21, 21/22	
2A	11	Naroo Nursing Home	152 Long Street Warialda	Gwydir North	Human Settlement	Special Fire Protection	Community Education	14	Facilitate Emergency Fire Relocation Plan.	Facilitate the creation and implementation of an emergency evacuation plan	FRNSW;RFS; Other	DET		17/18, 18/19, 19/20, 20/21, 21/22	
							Property Planning	15	Implement Community Protection Plan		FRNSW;RFS		TI CL;LGA		
2C	12	Toomelah	15 kilometres East of Boggabilla	Moree	Human Settlement	Residential	Hazard Reduction	10	Conduct Strategic Hazard Reduction	Conduct, as required, hazard reduction in areas that will result in reduced fire impact on the assets.	Private;RFS		TI CL;LGA		18/19, 20/21
							Community Education	17	Undertake targeted community engagement activities	Areas are targeted as part of ongoing local and State Public Awareness/Education campaigns including newspapers, radio, and the internet.	RFS		LGA		17/18, 18/19, 19/20, 20/21, 21/22

2C	13	Newell Highway	South of Narrabri to Coonabarabran	Moree	Economic	Infrastructure	Hazard Reduction	18	Conduct Strategic Hazard Reduction	Conduct Strategic Hazard Reduction to reduce impact of fire.	RMS		TI CL;LGA; RFS		18/19, 20/21
2C	14	Copeton Waters State Park	Copeton Dam Road Copeton	Gwydir South	Economic	Tourist and Recreation	Property Planning	19	Implement Site Management Plan		Other	Site Owner			18/19, 19/20, 20/21, 21/22
3A	0	Isolated Rural Properties in Moree Plains LGA	Across Moree Plains LGA	Moree	Human Settlement	Residential	Community Education	25	Undertake targeted community engagement activities	Areas are targeted as part of ongoing local and State Public Awareness/Education campaigns including newspapers, radio, and the internet.	RFS		LGA;DPI		17/18, 18/19, 19/20, 20/21, 21/22
3A	0	On Park Aboriginal Cultural Asset (Moderate)	Narrabri Moree BFMC Area	undefined	Cultural Heritage	Aboriginal Significance	Preparedness	22	Implement NPWS Fire Management Plan	Implement NPWS Fire Management Plan	OEH				17/18, 18/19, 19/20, 20/21, 21/22
3A	0	On Park Aboriginal Cultural Assets (High)	Namoi Gwydir BFMC Area	undefined	Cultural Heritage	Aboriginal Significance	Preparedness	22	Implement NPWS Fire Management Plan	Implement NPWS Fire Management Plan	OEH				17/18, 18/19, 19/20, 20/21, 21/22
3A	0	Off Park Assets (Moderate)	Narrabri Moree BFMC Area	undefined	Cultural Heritage	Aboriginal Significance									
3A	0	Off Park Forest Aboriginal Cultural Assets (Moderate)	Namoi Gwydir BFMC Area	undefined	Cultural Heritage	Aboriginal Significance	Preparedness	21	Implement AHIMS Management Conditions	Works/actions in the area are to comply with conditions listed in the Aboriginal Heritage Information Management System.	OEH		TI CL;RFS; DPI		17/18, 18/19, 19/20, 20/21, 21/22

3A	0	Off Park Forest Aboriginal Cultural Assets (High)	Namoi Gwydir BFMC Area	undefined	Cultural Heritage	Aboriginal Significance	Preparedness	21	Implement AHIMS Management Conditions	Works/actions in the area are to comply with conditions listed in the Aboriginal Heritage Information Management System.	OEH		TI CL;RFS; DPI		17/18, 18/19, 19/20, 20/21, 21/22
3A	0	On State Forest Aboriginal Cultural Assets (Moderate)	Namoi Gwydir BFMC area	undefined	Cultural Heritage	Aboriginal Significance	Hazard Reduction	20	Implement Forest Corps Fire Management Plan	Implement Forest Corps Fire Management Plan adhering to AHIMS guidelines.	FCNSW		RFS		17/18, 18/19, 19/20, 20/21, 21/22
3A	0	On State Forests Aboriginal Cultural Assets (High)	Namoi Gwydir BFMC Area	undefined	Cultural Heritage	Aboriginal Significance	Hazard Reduction	20	Implement Forest Corps Fire Management Plan	Implement Forest Corps Fire Management Plan adhering to AHIMS guidelines.	FCNSW		RFS		17/18, 18/19, 19/20, 20/21, 21/22
3A	15	Endangered Environmental Site	Private Property east edge of Pilliga East CCA Zone 2 Aboriginal Area	Narrabri	Environmental	Endangered	Hazard Reduction	10	Conduct Strategic Hazard Reduction	Conduct, as required, hazard reduction in areas that will result in reduced fire impact on the assets.	Private;RFS		TI CL;LGA		18/19, 20/21
3A	16	Endangered Environmental Site	Pilliga East State Forest	Narrabri	Environmental	Endangered	Hazard Reduction	20	Implement Forest Corps Fire Management Plan	Implement Forest Corps Fire Management Plan adhering to AHIMS guidelines.	FCNSW		RFS		17/18, 18/19, 19/20, 20/21, 21/22
3A	17	Jacks Creek Road		Narrabri	Human Settlement	Residential	Community Education	17	Undertake targeted community engagement activities	Areas are targeted as part of ongoing local and State Public Awareness/Education campaigns including newspapers, radio, and the internet.	RFS		LGA		17/18, 18/19, 19/20, 20/21, 21/22

							Hazard Reduction	10	Conduct Strategic Hazard Reduction	Conduct, as required, hazard reduction in areas that will result in reduced fire impact on the assets.	Private;RFS		TI CL;LGA		18/19, 20/21
3A	18	"Trawalla" Pecan Farm	5kms east of Pallamallawa on the Gwydir Highway	Moree	Economic	Agricultural	Community Education	25	Undertake targeted community engagement activities	Areas are targeted as part of ongoing local and State Public Awareness/Education campaigns including newspapers, radio, and the internet.	RFS		LGA;DPI		17/18, 18/19, 19/20, 20/21, 21/22
3A	19	Isolated Rural Properties Eulah Creek	Bullawa-Eulah Creek Road (including Kaputar Valley)	Narrabri	Human Settlement	Residential	Preparedness	23	Inspect and maintain Mt. Kaputar Fire Trail	Inspect and maintain the Mt. Kaputar Fire Trail as required.	RFS				17/18 19/20, 21/22
							Community Education	17	Undertake targeted community engagement activities	Areas are targeted as part of ongoing local and State Public Awareness/Education campaigns including newspapers, radio, and the internet.	RFS		LGA		17/18, 18/19, 19/20, 20/21, 21/22
3A	20	Endangered Environmental Site		Moree	Environmental	Endangered	Hazard Reduction	10	Conduct Strategic Hazard Reduction	Conduct, as required, hazard reduction in areas that will result in reduced fire impact on the assets.	Private;RFS		TI CL;LGA		18/19, 20/21
3A	21	Endangered Environmental Site		Moree	Environmental	Endangered	Preparedness	22	Implement NPWS Fire Management Plan	Implement NPWS Fire Management Plan	OEH				17/18, 18/19, 19/20, 20/21, 21/22

3A	22	Isolated Properties in Narrabri LGA	Across Narrabri LGA	Narrabri	Human Settlement	Residential	Community Education	17	Undertake targeted community engagement activities	Areas are targeted as part of ongoing local and State Public Awareness/Education campaigns including newspapers, radio, and the internet.	RFS		LGA		17/18, 18/19, 19/20, 20/21, 21/22
3A	23	Vulnerable Environmental Site	Mount Kaputar National Park	Narrabri	Environmental	Vulnerable	Preparedness	22	Implement NPWS Fire Management Plan	Implement NPWS Fire Management Plan	OEH				17/18, 18/19, 19/20, 20/21, 21/22
3A	24	Terry Hie Hie	Terry Hie Hie	Moree	Human Settlement	Residential	Hazard Reduction	10	Conduct Strategic Hazard Reduction	Conduct, as required, hazard reduction in areas that will result in reduced fire impact on the assets.	Private;RFS		TI CL;LGA		18/19, 20/21
							Community Education	17	Undertake targeted community engagement activities	Areas are targeted as part of ongoing local and State Public Awareness/Education campaigns including newspapers, radio, and the internet.	RFS		LGA		17/18, 18/19, 19/20, 20/21, 21/22
3A	25	Vulnerable Environmental Site	Brigalow Park Nature Reserve	Narrabri	Environmental	Vulnerable	Preparedness	22	Implement NPWS Fire Management Plan	Implement NPWS Fire Management Plan	OEH				17/18, 18/19, 19/20, 20/21, 21/22
3A	26	Vulnerable Environmental Site	Mount Kaputar National Park	Narrabri	Environmental	Vulnerable	Preparedness	22	Implement NPWS Fire Management Plan	Implement NPWS Fire Management Plan	OEH				17/18, 18/19, 19/20, 20/21, 21/22

3A	27	Vulnerable Environmental Site		Narrabri	Environmental	Vulnerable	Hazard Reduction	10	Conduct Strategic Hazard Reduction	Conduct, as required, hazard reduction in areas that will result in reduced fire impact on the assets.	Private;RFS		TI CL;LGA		18/19, 20/21
3A	28	Vulnerable Environmental Site		Narrabri	Environmental	Vulnerable	Community Education	11	Undertake targeted community engagement activities	Areas are targeted as part of ongoing local and State Public Awareness/Education campaigns including newspapers, radio, and the internet.	RFS		LGA;OEH		17/18, 18/19, 19/20, 20/21, 21/22
3A	29	Vulnerable Environmental Site		Moree	Environmental	Vulnerable	Community Education	11	Undertake targeted community engagement activities	Areas are targeted as part of ongoing local and State Public Awareness/Education campaigns including newspapers, radio, and the internet.	RFS		LGA;OEH		17/18, 18/19, 19/20, 20/21, 21/22
3A	30	Vulnerable Environmental Site	Gamilaroi Nature Reserve	Moree	Environmental	Vulnerable	Preparedness	22	Implement NPWS Fire Management Plan	Implement NPWS Fire Management Plan	OEH				17/18, 18/19, 19/20, 20/21, 21/22
3A	31	Vulnerable Environmental Site		Moree	Environmental	Vulnerable	Community Education	11	Undertake targeted community engagement activities	Areas are targeted as part of ongoing local and State Public Awareness/Education campaigns including newspapers, radio, and the internet.	RFS		LGA;OEH		17/18, 18/19, 19/20, 20/21, 21/22

3A	32	Mungindi -	Mungindi NSW	Moree	Human Settlement	Residential	Hazard Reduction	10	Conduct Strategic Hazard Reduction	Conduct, as required, hazard reduction in areas that will result in reduced fire impact on the assets.	Private;RFS	TI CL;LGA	18/19, 20/21
							Community Education	17	Undertake targeted community engagement activities	Areas are targeted as part of ongoing local and State Public Awareness/Education campaigns including newspapers, radio, and the internet.	RFS	LGA	17/18, 18/19, 19/20, 20/21, 21/22
3A	33	Pilliga	Pilliga NSW	Narrabri	Human Settlement	Residential	Hazard Reduction	10	Conduct Strategic Hazard Reduction	Conduct, as required, hazard reduction in areas that will result in reduced fire impact on the assets.	Private;RFS	TI CL;LGA	18/19, 20/21
							Community Education	17	Undertake targeted community engagement activities	Areas are targeted as part of ongoing local and State Public Awareness/Education campaigns including newspapers, radio, and the internet.	RFS	LGA	17/18, 18/19, 19/20, 20/21, 21/22
3A	34	Turrawan	Turrawan	Narrabri	Human Settlement	Residential	Hazard Reduction	10	Conduct Strategic Hazard Reduction	Conduct, as required, hazard reduction in areas that will result in reduced fire impact on the assets.	Private;RFS	TI CL;LGA	18/19, 20/21

							Community Education	17	Undertake targeted community engagement activities	Areas are targeted as part of ongoing local and State Public Awareness/Education campaigns including newspapers, radio, and the internet.	RFS		LGA		17/18, 18/19, 19/20, 20/21, 21/22
3A	35	Running Bare Resort	Westport Road - Jacks Creek	Narrabri	Economic	Tourist and Recreation	Community Education	17	Undertake targeted community engagement activities	Areas are targeted as part of ongoing local and State Public Awareness/Education campaigns including newspapers, radio, and the internet.	RFS		LGA		17/18, 18/19, 19/20, 20/21, 21/22
3A	36	Cuttabri Wine Shanty	40kms west of South West of Wee Waa on the Pilliga Road	Narrabri	Cultural Heritage	Other	Community Education	17	Undertake targeted community engagement activities	Areas are targeted as part of ongoing local and State Public Awareness/Education campaigns including newspapers, radio, and the internet.	RFS		LGA		17/18, 18/19, 19/20, 20/21, 21/22
3A	37	Bendygleet Subdivision	5kms west of Moree	Moree	Human Settlement	Residential	Community Education	17	Undertake targeted community engagement activities	Areas are targeted as part of ongoing local and State Public Awareness/Education campaigns including newspapers, radio, and the internet.	RFS		LGA		17/18, 18/19, 19/20, 20/21, 21/22
							Hazard Reduction	10	Conduct Strategic Hazard Reduction	Conduct, as required, hazard reduction in areas that will result in reduced fire impact on the	Private;RFS		TI CL;LGA		18/19, 20/21

										assets.				
3A	38	Yarraman	Carnarvon Highway 5kms North-west of Moree	Moree	Human Settlement	Residential	Community Education	17	Undertake targeted community engagement activities	Areas are targeted as part of ongoing local and State Public Awareness/Education campaigns including newspapers, radio, and the internet.	RFS		LGA	17/18, 18/19, 19/20, 20/21, 21/22
							Hazard Reduction	10	Conduct Strategic Hazard Reduction	Conduct, as required, hazard reduction in areas that will result in reduced fire impact on the assets.	Private;RFS		TI CL;LGA	18/19, 20/21
3A	39	Wee Waa	Wee Waa NSW	Narrabri	Human Settlement	Residential	Hazard Reduction	26	Conduct Strategic Hazard Reduction	Conduct, as required, hazard reduction in areas that will result in reduced fire impact on the assets.	Private;RFS		TI CL;LGA;FRNSW;RMS	
							Community Education	24	Undertake targeted community engagement activities	Areas are targeted as part of ongoing local and State Public Awareness/Education campaigns including newspapers, radio, and the internet.	FRNSW;RFS		LGA	17/18, 18/19, 19/20, 20/21, 21/22
3A	40	Coolatai Village	Coolatai	Gwydir North	Human Settlement	Residential	Hazard Reduction	27	Undertake Strategic Hazard Reduction	Monitor Fuel Loads and Undertake Hazard Reduction when required.	LGA		RFS	17/18 19/20, 21/22

							Property Planning	29	Implement Community Protection Plan	Implement Community Protection Plan	RFS		TI CL;LGA		17/18, 18/19, 19/20, 20/21, 21/22
3A	41	Warialda Airport	2km west of Warialda	Gwydir North	Economic	Infrastructure	Property Planning	19	Implement Site Management Plan		Other	Site Owner			18/19, 19/20, 20/21, 21/22
							Hazard Reduction	30	Undertake Strategic Hazard Reduction	Monitor Fuel Loads and Undertake Hazard Reduction when required.	LGA		TI CL;RFS		17/18, 18/19, 19/20, 20/21, 21/22
3A	42	Touriandi Lodge Nursing Home	4 Old Bora Road Bingara	Gwydir South	Human Settlement	Special Fire Protection	Hazard Reduction	28	Implement Strategic Hazard Reduction	Strategic Hazard reduction - Slashing Tittering or Burning	LGA		RFS		18/19, 19/20, 20/21, 21/22
3A	43	Myall Creek Massacre Memorial	Inverell Rd 20 km from Bingara	Gwydir South	Cultural Heritage	Aboriginal Significance	Hazard Reduction	30	Undertake Strategic Hazard Reduction	Monitor Fuel Loads and Undertake Hazard Reduction when required.	LGA		TI CL;RFS		17/18, 18/19, 19/20, 20/21, 21/22
3A	44	Gins Leap	Kamilaroi Highway Boggabri	Narrabri	Cultural Heritage	Aboriginal Significance	Hazard Reduction	27	Undertake Strategic Hazard Reduction	Monitor Fuel Loads and Undertake Hazard Reduction when required.	LGA		RFS		17/18 19/20, 21/22
3A	45	Rural Properties on Bundara Road	Bundara Road from Copeton Dam Road to Gwydir Shire Boundary	Gwydir South	Human Settlement	Residential	Hazard Reduction	31	Hazard Reduction in SFAZ	SFAZ Hazard reduction by mechanical, burning or stock.	TI CL		RFS		18/19, 20/21
3B	0	Coal and Gas Mines	Across the BFMC area	undefined	Economic	Mines	Property Planning	32	Implement Site Emergency Plan	Mining companies are required to develop and implement emergency plans which contain bushfire mitigation and incident response procedures.	Other	Mining Company	RFS		17/18, 18/19, 19/20, 20/21, 21/22

3C	46	Westport / Rockdale Road (Jacks Creek)	Westport / Rockdale Road (Jacks Creek)	Narrabri	Human Settlement	Residential	Preparedness	33	Inspect and maintain Fire Trails	Inspect and maintain Fire Trails as required	RFS		LGA;OEH ;DPI	17/18, 18/19, 19/20, 20/21, 21/22
							Preparedness	34	Inspect and maintain unsealed roads in area.	Inspect and maintain unsealed roads in area as part of strategic network of fire control lines. Unsealed roads are to be maintained to minimum Fire Trail standard.	LGA		RFS	18/19, 20/21
							Preparedness	35	Inspect and maintain Bimbadeen Crossing.	Inspect and maintain Bimbadeen Crossing as part of strategic network of fire control lines.	DPI		RFS	18/19, 19/20, 20/21, 21/22
3C	47	Australian National Telescope Facility - CSIRO Observatory	Yarrie Lake Road	Narrabri	Economic	Infrastructure	Hazard Reduction	36	Implement and Monitor Bushfire Management Plan	CSIRO have a Bushfire Management Plan that outlines hazard reduction activities for the site. CSIRO conduct regular inspections of the site and contractors implement works as required.	RFS		Other	CSIRO
3D	48	Isolated Rural Properties	Within 2kms of the Northern boundary of the Pilliga Forest Complex in the Cuttabri / Merimborough / Pilliga area	Narrabri	Human Settlement	Residential	Community Education	25	Undertake targeted community engagement activities	Areas are targeted as part of ongoing local and State Public Awareness/Educate ion campaigns including newspapers, radio, and the internet.	RFS		LGA;DPI	17/18, 18/19, 19/20, 20/21, 21/22

3D	49	Isolated Rural Properties	Along the Pilliga - Gwabegar Road	Narrabri	Human Settlement	Residential	Preparedness	37	Inspect and maintain the Pilliga - Gwabegar Road	Inspect and maintain the Pilliga - Gwabegar Road as a Strategic Fire Control Line.	LGA		RFS		17/18, 19/20, 21/22
							Community Education	25	Undertake targeted community engagement activities	Areas are targeted as part of ongoing local and State Public Awareness/Education campaigns including newspapers, radio, and the internet.	RFS		LGA;DPI		17/18, 18/19, 19/20, 20/21, 21/22
3D	50	Endangered Environmental Site	Mount Kaputar National Park	Moree	Environmental	Endangered	Preparedness	22	Implement NPWS Fire Management Plan	Implement NPWS Fire Management Plan	OEH				17/18, 18/19, 19/20, 20/21, 21/22
3D	51	Gwabegar Rural Fire Service Repeater Site	Gwabegar	Narrabri	Economic	Infrastructure	Property Planning	8	Implement Community Protection Plan		RFS		TI CL;LGA		17/18, 18/19, 19/20, 20/21, 21/22
4	0	Agricultural Cropping	Narrabri Moree BFMC Area	undefined	Economic	Agricultural	Community Education	25	Undertake targeted community engagement activities	Areas are targeted as part of ongoing local and State Public Awareness/Education campaigns including newspapers, radio, and the internet.	RFS		LGA;DPI		17/18, 18/19, 19/20, 20/21, 21/22
4	0	Telephone Exchange	Namoi Gwydir BFMC Area	undefined	Economic	Infrastructure	Hazard Reduction	43	As per Telstra's Facility Management Plan	Sites maintained as required by Telstra's Facility Management contractors.	Other	Telstra	RFS		18/19, 19/20, 20/21, 21/22

4	52	Boggabilla	Boggabilla NSW	Moree	Human Settlement	Residential	Community Education	17	Undertake targeted community engagement activities	Areas are targeted as part of ongoing local and State Public Awareness/Education campaigns including newspapers, radio, and the internet.	RFS	LGA	17/18, 18/19, 19/20, 20/21, 21/22
							Hazard Reduction	10	Conduct Strategic Hazard Reduction	Conduct, as required, hazard reduction in areas that will result in reduced fire impact on the assets.	Private;RFS	TI CL;LGA	18/19, 20/21
4	53	Moree	Moree NSW	Moree	Human Settlement	Residential	Community Education	24	Undertake targeted community engagement activities	Areas are targeted as part of ongoing local and State Public Awareness/Education campaigns including newspapers, radio, and the internet.	FRNSW;RFS	LGA	17/18, 18/19, 19/20, 20/21, 21/22
							Hazard Reduction	26	Conduct Strategic Hazard Reduction	Conduct, as required, hazard reduction in areas that will result in reduced fire impact on the assets.	Private;RFS	TI CL;LGA;FRNSW;RMS	
4	54	Baan Baa	Baan Baa NSW	Narrabri	Human Settlement	Residential	Community Education	17	Undertake targeted community engagement activities	Areas are targeted as part of ongoing local and State Public Awareness/Education campaigns including newspapers, radio, and the internet.	RFS	LGA	17/18, 18/19, 19/20, 20/21, 21/22

							Hazard Reduction	10	Conduct Strategic Hazard Reduction	Conduct, as required, hazard reduction in areas that will result in reduced fire impact on the assets.	Private;RFS		TI CL;LGA		18/19, 20/21
4	55	Mungindi - QLD side	Mungindi - QLD	Moree	Human Settlement	Residential	Community Education	17	Undertake targeted community engagement activities	Areas are targeted as part of ongoing local and State Public Awareness/Education campaigns including newspapers, radio, and the internet.	RFS		LGA		17/18, 18/19, 19/20, 20/21, 21/22
							Hazard Reduction	44	Conduct Strategic Hazard Reduction	Conduct, as required, hazard reduction in areas that will result in reduced fire impact on the assets.	Private;RFS		LGA		17/18, 18/19, 19/20, 20/21, 21/22
4	56	Narrabri	Narrabri NSW	Narrabri	Human Settlement	Residential	Community Education	24	Undertake targeted community engagement activities	Areas are targeted as part of ongoing local and State Public Awareness/Education campaigns including newspapers, radio, and the internet.	FRNSW;RFS		LGA		17/18, 18/19, 19/20, 20/21, 21/22
							Hazard Reduction	26	Conduct Strategic Hazard Reduction	Conduct, as required, hazard reduction in areas that will result in reduced fire impact on the assets.	Private;RFS		TI CL;LGA;FRNSW;RMS		

4	57	Mungindi Hospital	Queensland side of Mungindi	Moree	Human Settlement	Special Fire Protection	Property Planning	39	Facilitate emergency fire relocation plan	In conjunction with the South West Health Service District - Mungindi Hospital, and the Queensland Fire and Rescue Service, develop an emergency fire relocation plan for the Mungindi Hospital.	RFS		Other	QLD South West Health Service, QFRS	18/19, 19/20, 20/21, 21/22
4	58	Ashley	Ashley NSW	Moree	Human Settlement	Residential	Hazard Reduction	10	Conduct Strategic Hazard Reduction	Conduct, as required, hazard reduction in areas that will result in reduced fire impact on the assets.	Private;RFS		TI CL;LGA		18/19, 20/21
							Community Education	17	Undertake targeted community engagement activities	Areas are targeted as part of ongoing local and State Public Awareness/Education campaigns including newspapers, radio, and the internet.	RFS		LGA	17/18, 18/19, 19/20, 20/21, 21/22	
4	59	Pallamallawa	Pallamallawa NSW	Moree	Human Settlement	Residential	Hazard Reduction	10	Conduct Strategic Hazard Reduction	Conduct, as required, hazard reduction in areas that will result in reduced fire impact on the assets.	Private;RFS		TI CL;LGA		18/19, 20/21
							Community Education	17	Undertake targeted community engagement activities	Areas are targeted as part of ongoing local and State Public Awareness/Education campaigns including newspapers, radio, and the internet.	RFS		LGA	17/18, 18/19, 19/20, 20/21, 21/22	

4	60	Biniguy	Biniguy NSW	Moree	Human Settlement	Residential	Community Education	17	Undertake targeted community engagement activities	Areas are targeted as part of ongoing local and State Public Awareness/Education campaigns including newspapers, radio, and the internet.	RFS		LGA		17/18, 18/19, 19/20, 20/21, 21/22
							Hazard Reduction	10	Conduct Strategic Hazard Reduction	Conduct, as required, hazard reduction in areas that will result in reduced fire impact on the assets.	Private;RFS		TI CL;LGA		18/19, 20/21
4	61	Craigdon Guest House	40kms North East of Narrabri on the Bingara Road	Narrabri	Economic	Tourist and Recreation	Community Education	17	Undertake targeted community engagement activities	Areas are targeted as part of ongoing local and State Public Awareness/Education campaigns including newspapers, radio, and the internet.	RFS		LGA		17/18, 18/19, 19/20, 20/21, 21/22
4	62	Yarrie Lake Reserve	30kms west of Moree	Narrabri	Economic	Tourist and Recreation	Preparedness	40	Inspect and maintain Yarrie Lake fire trail	Maintain existing Yarrie Lake fire trail as required.	RFS		LGA		18/19, 19/20, 20/21, 21/22
4	63	Garah Rural Fire Service Repeater site	Tuloona	Moree	Economic	Infrastructure									
4	64	Wilga Park Power Station	Corner Yarrie Lake Road and Kiandool Lane	Narrabri	Economic	Infrastructure	Property Planning	38	Implement Fire Management Plan		Other	Site Manager			18/19, 19/20, 20/21, 21/22
4	65	Narrabri Pistol Club	Stoney Creek Road Narrabri	Narrabri	Economic	Tourist and Recreation	Hazard Reduction	10	Conduct Strategic Hazard Reduction	Conduct, as required, hazard reduction in areas that will result in reduced fire impact on the assets.	Private;RFS		TI CL;LGA		18/19, 20/21

4	66	Fairfax Primary School	Maules Creek Road	Narrabri	Human Settlement	Special Fire Protection	Property Planning	41	Facilitate Emergency Fire Relocation Plan	Promote and facilitate emergency fire relocation plan in conjunction with Department of Education and school principal.	RFS		Other	DET	17/18, 18/19, 19/20, 20/21, 21/22
4	67	Geoscience Australia Broadcasting Tower	East of Mungindi	Moree	Economic	Infrastructure	Preparedness	6	Create and Implement Site Fire Management Strategy	Create and Implement Fire Management Strategy. Lessee of site in coordination with Crown Lands and NPWS.	Other	Site Lessee	TI CL;OEH; RFS		17/18, 18/19, 19/20, 20/21, 21/22
4	68	NSP Boggabri Showground	Kamilaroi Highway Boggabri	Narrabri	Human Settlement	Other	Hazard Reduction	42	Maintain fuels in accordance with Guidelines	Maintain bush fire fuels at or below the level that meets the Essential Selection Criteria specified in the Neighbourhood Safer Places Guidelines prepared by RFS	LGA		RFS		17/18, 18/19, 19/20, 20/21, 21/22
4	69	NSP Baan Baa Community Hall	Baranbah Street Baan Baa	Narrabri	Human Settlement	Other	Hazard Reduction	42	Maintain fuels in accordance with Guidelines	Maintain bush fire fuels at or below the level that meets the Essential Selection Criteria specified in the Neighbourhood Safer Places Guidelines prepared by RFS	LGA		RFS		17/18, 18/19, 19/20, 20/21, 21/22
4	70	NSP Narrabri Showground	Wukawa Street Narrabri	Narrabri	Human Settlement	Other	Hazard Reduction	42	Maintain fuels in accordance with Guidelines	Maintain bush fire fuels at or below the level that meets the Essential Selection Criteria specified in the	LGA		RFS		17/18, 18/19, 19/20, 20/21, 21/22

										Neighbourhood Safer Places Guidelines prepared by RFS				
4	71	NSP Pilliga Public School	Dangar Street Pilliga	Narrabri	Human Settlement	Other	Hazard Reduction	42	Maintain fuels in accordance with Guidelines	Maintain bush fire fuels at or below the level that meets the Essential Selection Criteria specified in the Neighbourhood Safer Places Guidelines prepared by RFS	LGA	RFS		17/18, 18/19, 19/20, 20/21, 21/22
4	72	NSP Wee Waa Showground	Maitland Street Wee Waa	Narrabri	Human Settlement	Other	Hazard Reduction	42	Maintain fuels in accordance with Guidelines	Maintain bush fire fuels at or below the level that meets the Essential Selection Criteria specified in the Neighbourhood Safer Places Guidelines prepared by RFS	LGA	RFS		17/18, 18/19, 19/20, 20/21, 21/22
4	73	NSP Gwabegar Community Link Centre	Cnr Anzac Parage and Ryrie Street Gwabegar	Narrabri	Human Settlement	Other	Hazard Reduction	42	Maintain fuels in accordance with Guidelines	Maintain bush fire fuels at or below the level that meets the Essential Selection Criteria specified in the Neighbourhood Safer Places Guidelines prepared by RFS	LGA	RFS		17/18, 18/19, 19/20, 20/21, 21/22
4	74	NSP Terry Hie	Terry Hie Road Terry Hie	Moree	Human Settlement	Other	Hazard Reduction	42	Maintain fuels in accordance with Guidelines	Maintain bush fire fuels at or below the level that meets the Essential Selection Criteria specified in the	LGA	RFS		17/18, 18/19, 19/20, 20/21, 21/22

										Neighbourhood Safer Places Guidelines prepared by RFS				
4	75	NSP Maules Creek Community Hall	2249 Harparary Road Maules creek	Narrabri	Human Settlement	Other	Hazard Reduction	42	Maintain fuels in accordance with Guidelines	Maintain bush fire fuels at or below the level that meets the Essential Selection Criteria specified in the Neighbourhood Safer Places Guidelines prepared by RFS	LGA		RFS	17/18, 18/19, 19/20, 20/21, 21/22
4	76	NSP Bullawa - Eulah RFS Station	370 Eulah Creek Road Eulah Creek	Narrabri	Human Settlement	Other	Hazard Reduction	42	Maintain fuels in accordance with Guidelines	Maintain bush fire fuels at or below the level that meets the Essential Selection Criteria specified in the Neighbourhood Safer Places Guidelines prepared by RFS	LGA		RFS	17/18, 18/19, 19/20, 20/21, 21/22
4	77	Phone Exchanges	Namoi Gwydir BFMC AREA		Economic	Infrastructure	Property Planning	19	Implement Site Management Plan		Other	Site Owner		18/19, 19/20, 20/21, 21/22
4	78	Croppa Creek School	Aspley Crescent Croppa Creek	Gwydir North	Human Settlement	Special Fire Protection	Community Education	49	Facilitate Emergency Fire Relocation Plan	Facilitate the creation and implementation of an emergency evacuation plan	RFS;Other	DET		17/18, 18/19, 19/20, 20/21, 21/22
							Hazard Reduction	30	Undertake Strategic Hazard Reduction	Monitor Fuel Loads and Undertake Hazard Reduction when required.	LGA		TI CL;RFS	17/18, 18/19, 19/20, 20/21, 21/22

4	79	Batterhams Communications Tower	Apex Lookout Road Bingara	Gwydir South	Economic	Infrastructure	Property Planning	45	Create and Implement Site Management Plan	Create and Implement Site Management Plan	Other	Site Lessee	RFS		18/19, 19/20, 20/21, 21/22
4	80	Bingara Sub Station	Basset Street Bingara	Gwydir South	Economic	Infrastructure	Property Planning	19	Implement Site Management Plan		Other	Site Owner			18/19, 19/20, 20/21, 21/22
4	81	Coolatai 51 Repeater	West of Coolatai	Gwydir North	Economic	Infrastructure	Property Planning	45	Create and Implement Site Management Plan	Create and Implement Site Management Plan	Other	Site Lessee	RFS		18/19, 19/20, 20/21, 21/22
4	82	Cranky Rock	10km west of Warialda	Gwydir North	Economic	Tourist and Recreation	Property Planning	46	Implement NPWS Fire Management Strategy		OEH				
4	83	Mt Mitchell Communications	50km NW of Warialda	Gwydir North	Economic	Infrastructure	Property Planning	45	Create and Implement Site Management Plan	Create and Implement Site Management Plan	Other	Site Lessee	RFS		18/19, 19/20, 20/21, 21/22
4	84	Croppa Creek Village	Croppa Creek	Gwydir North	Human Settlement	Residential	Community Education	47	Undertake Targeted Community Engagement	Areas are targeted as part of ongoing local and State Public Awareness/Education campaigns including newspapers, radio, and the internet.	RFS				17/18, 18/19, 19/20, 20/21, 21/22
							Hazard Reduction	30	Undertake Strategic Hazard Reduction	Monitor Fuel Loads and Undertake Hazard Reduction when required.	LGA		TI CL;RFS		17/18, 18/19, 19/20, 20/21, 21/22
4	85	Gravesend Village	Gravesend	Gwydir North	Human Settlement	Residential	Hazard Reduction	30	Undertake Strategic Hazard Reduction	Monitor Fuel Loads and Undertake Hazard Reduction when required.	LGA		TI CL;RFS		17/18, 18/19, 19/20, 20/21, 21/22
4	86	Warialda Sub Station	Warialda Road Warialda	Gwydir North	Economic	Infrastructure	Property Planning	19	Implement Site Management Plan		Other	Site Owner			18/19, 19/20, 20/21, 21/22

**Annex A to
Bush Fire Coordinating Committee
Policy No. 1/2008
Bush Fire Risk Management**

4	87	3 Mile radio repeater	Warialda Road Warialda	Gwydir North	Economic	Infrastructure	Property Planning	45	Create and Implement Site Management Plan	Create and Implement Site Management Plan	Other	Site Lessee	RFS		18/19, 19/20, 20/21, 21/22
4	88	Yallaroi Sub Station	North Star Road Yallaroi	Gwydir North	Economic	Infrastructure	Property Planning	45	Create and Implement Site Management Plan	Create and Implement Site Management Plan	Other	Site Lessee	RFS		18/19, 19/20, 20/21, 21/22
4	89	Copeton Dam Power Station	Copeton Dam SW edge near Wall	Gwydir South	Economic	Infrastructure	Property Planning	19	Implement Site Management Plan		Other	Site Owner			18/19, 19/20, 20/21, 21/22
4	90	Warialda Race Course	West of Warialda	Gwydir North	Economic	Tourist and Recreation	Hazard Reduction	27	Undertake Strategic Hazard Reduction	Monitor Fuel Loads and Undertake Hazard Reduction when required.	LGA		RFS		17/18, 19/20, 21/22
4	91	Gravesend School	Gwydir Street Gravesend	Gwydir North	Human Settlement	Special Fire Protection	Community Education	49	Facilitate Emergency Fire Relocation Plan	Facilitate the creation and implementation of an emergency evacuation plan	RFS;Other	DET			17/18, 18/19, 19/20, 20/21, 21/22
4	92	Upper Bingara	Upper Bingara Road	Gwydir South	Human Settlement	Residential	Community Education	47	Undertake Targeted Community Engagement	Areas are targeted as part of ongoing local and State Public Awareness/Education campaigns including newspapers, radio, and the internet.	RFS				17/18, 18/19, 19/20, 20/21, 21/22
4	93	Warialda Rail	Warialda Rail	Gwydir South	Human Settlement	Residential	Hazard Reduction	30	Undertake Strategic Hazard Reduction	Monitor Fuel Loads and Undertake Hazard Reduction when required.	LGA		TI CL;RFS		17/18, 18/19, 19/20, 20/21, 21/22
4	94	Upper Horton	Upper Horton	Gwydir South	Human Settlement	Residential	Community Education	47	Undertake Targeted Community Engagement	Areas are targeted as part of ongoing local and State Public Awareness/Education campaigns including	RFS				17/18, 18/19, 19/20, 20/21, 21/22

										newspapers, radio, and the internet.				
4	95	Cobbadah	Cobbadah	Gwydir South	Human Settlement	Residential	Hazard Reduction	30	Undertake Strategic Hazard Reduction	Monitor Fuel Loads and Undertake Hazard Reduction when required.	LGA		TI CL;RFS	17/18, 18/19, 19/20, 20/21, 21/22
4	96	NSP Coolatai	Coolatai Sports Ground	Gwydir North	Human Settlement	Other	Property Planning	48	Maintain fuels in accordance with Guidelines	Maintain bush fire fuels at or below the level that meets the Essential Selection Criteria specified in the Neighbourhood Safer Places Guidelines prepared by RFS	LGA		TI CL;RFS	17/18, 18/19, 19/20, 20/21, 21/22
4	97	NSP Upper Horton	Cobbadah Road Upper Horton	Gwydir South	Human Settlement	Other	Property Planning	48	Maintain fuels in accordance with Guidelines	Maintain bush fire fuels at or below the level that meets the Essential Selection Criteria specified in the Neighbourhood Safer Places Guidelines prepared by RFS	LGA		TI CL;RFS	17/18, 18/19, 19/20, 20/21, 21/22
4	98	Rural Properties Cobbadah	Cobbadah Road Cobbadah	Gwydir South	Human Settlement	Residential	Hazard Reduction	30	Undertake Strategic Hazard Reduction	Monitor Fuel Loads and Undertake Hazard Reduction when required.	LGA		TI CL;RFS	17/18, 18/19, 19/20, 20/21, 21/22
4	99	NSP Warialda	Warialda Showground	Gwydir North	Human Settlement	Other	Property Planning	48	Maintain fuels in accordance with Guidelines	Maintain bush fire fuels at or below the level that meets the Essential Selection Criteria	LGA		TI CL;RFS	17/18, 18/19, 19/20, 20/21, 21/22

										specified in the Neighbourhood Safer Places Guidelines prepared by RFS				
4	100	NSP Bingara	Bowen Street Bingara	Gwydir South	Human Settlement	Other	Property Planning	48	Maintain fuels in accordance with Guidelines	Maintain bush fire fuels at or below the level that meets the Essential Selection Criteria specified in the Neighbourhood Safer Places Guidelines prepared by RFS	LGA		TI CL;RFS	17/18, 18/19, 19/20, 20/21, 21/22
4	101	NSP Gwydir Oval	Fraser Street Bingara	Gwydir South	Human Settlement	Other	Property Planning	48	Maintain fuels in accordance with Guidelines	Maintain bush fire fuels at or below the level that meets the Essential Selection Criteria specified in the Neighbourhood Safer Places Guidelines prepared by RFS	LGA		TI CL;RFS	17/18, 18/19, 19/20, 20/21, 21/22
4	102	NSP Warialda Rail	Avoca Street Warialda Rail	Gwydir South	Human Settlement	Other	Property Planning	48	Maintain fuels in accordance with Guidelines	Maintain bush fire fuels at or below the level that meets the Essential Selection Criteria specified in the Neighbourhood Safer Places Guidelines prepared by RFS	LGA		TI CL;RFS	17/18, 18/19, 19/20, 20/21, 21/22
4	103	NSP Keera Station	Copeton Dam Road Bingara	Gwydir South	Human Settlement	Other	Property Planning	48	Maintain fuels in accordance with Guidelines	Maintain bush fire fuels at or below the level that meets the Essential Selection Criteria specified in the	LGA		TI CL;RFS	17/18, 18/19, 19/20, 20/21, 21/22

										Neighbourhood Safer Places Guidelines prepared by RFS					
NA	104	Rocky Creek Drainage Area	Pilliga CCA Zone 3 State Conservation Area	Narrabri	Cultural Heritage	Non Indigenous	Preparedness	22	Implement NPWS Fire Management Plan	Implement NPWS Fire Management Plan	OEH				17/18, 18/19, 19/20, 20/21, 21/22
NA	105	Weemelah	Weemelah NSW	Moree	Human Settlement	Residential	Hazard Reduction	51	Conduct Strategic Hazard Reduction.	Conduct, as required, hazard reduction in areas that will result in reduced fire impact on the assets.	Private;RFS		TI CL;LGA; RMS		17/18, 18/19, 19/20, 20/21, 21/22
							Community Education	17	Undertake targeted community engagement activities	Areas are targeted as part of ongoing local and State Public Awareness/Education campaigns including newspapers, radio, and the internet.	RFS		LGA		17/18, 18/19, 19/20, 20/21, 21/22
NA	106	Garah	Garah NSW	Moree	Human Settlement	Residential	Community Education	17	Undertake targeted community engagement activities	Areas are targeted as part of ongoing local and State Public Awareness/Education campaigns including newspapers, radio, and the internet.	RFS		LGA		17/18, 18/19, 19/20, 20/21, 21/22
							Hazard Reduction	51	Conduct Strategic Hazard Reduction.	Conduct, as required, hazard reduction in areas that will result in reduced fire impact on the assets.	Private;RFS		TI CL;LGA; RMS		17/18, 18/19, 19/20, 20/21, 21/22

NA	107	Boomi	Boomi NSW	Moree	Human Settlement	Residential	Community Education	17	Undertake targeted community engagement activities	Areas are targeted as part of ongoing local and State Public Awareness/Education campaigns including newspapers, radio, and the internet.	RFS	LGA		17/18, 18/19, 19/20, 20/21, 21/22
							Hazard Reduction	51	Conduct Strategic Hazard Reduction.	Conduct, as required, hazard reduction in areas that will result in reduced fire impact on the assets.	Private;RFS	TI CL;LGA; RMS		17/18, 18/19, 19/20, 20/21, 21/22
NA	108	Mallowa Primary School	Mallowa 75kms west of Moree	Moree	Human Settlement	Special Fire Protection	Property Planning	41	Facilitate Emergency Fire Relocation Plan	Promote and facilitate emergency fire relocation plan in conjunction with Department of Education and school principal.	RFS	Other	DET	17/18, 18/19, 19/20, 20/21, 21/22
NA	109	Gurley	Gurley NSW	Moree	Human Settlement	Residential	Community Education	17	Undertake targeted community engagement activities	Areas are targeted as part of ongoing local and State Public Awareness/Education campaigns including newspapers, radio, and the internet.	RFS	LGA		17/18, 18/19, 19/20, 20/21, 21/22
							Hazard Reduction	10	Conduct Strategic Hazard Reduction	Conduct, as required, hazard reduction in areas that will result in reduced fire impact on the assets.	Private;RFS	TI CL;LGA		18/19, 20/21
NA	110	Bellata	Bellata NSW	Narrabri	Human Settlement	Residential	Hazard Reduction	10	Conduct Strategic Hazard Reduction	Conduct, as required, hazard reduction in areas that will result in	Private;RFS	TI CL;LGA		18/19, 20/21

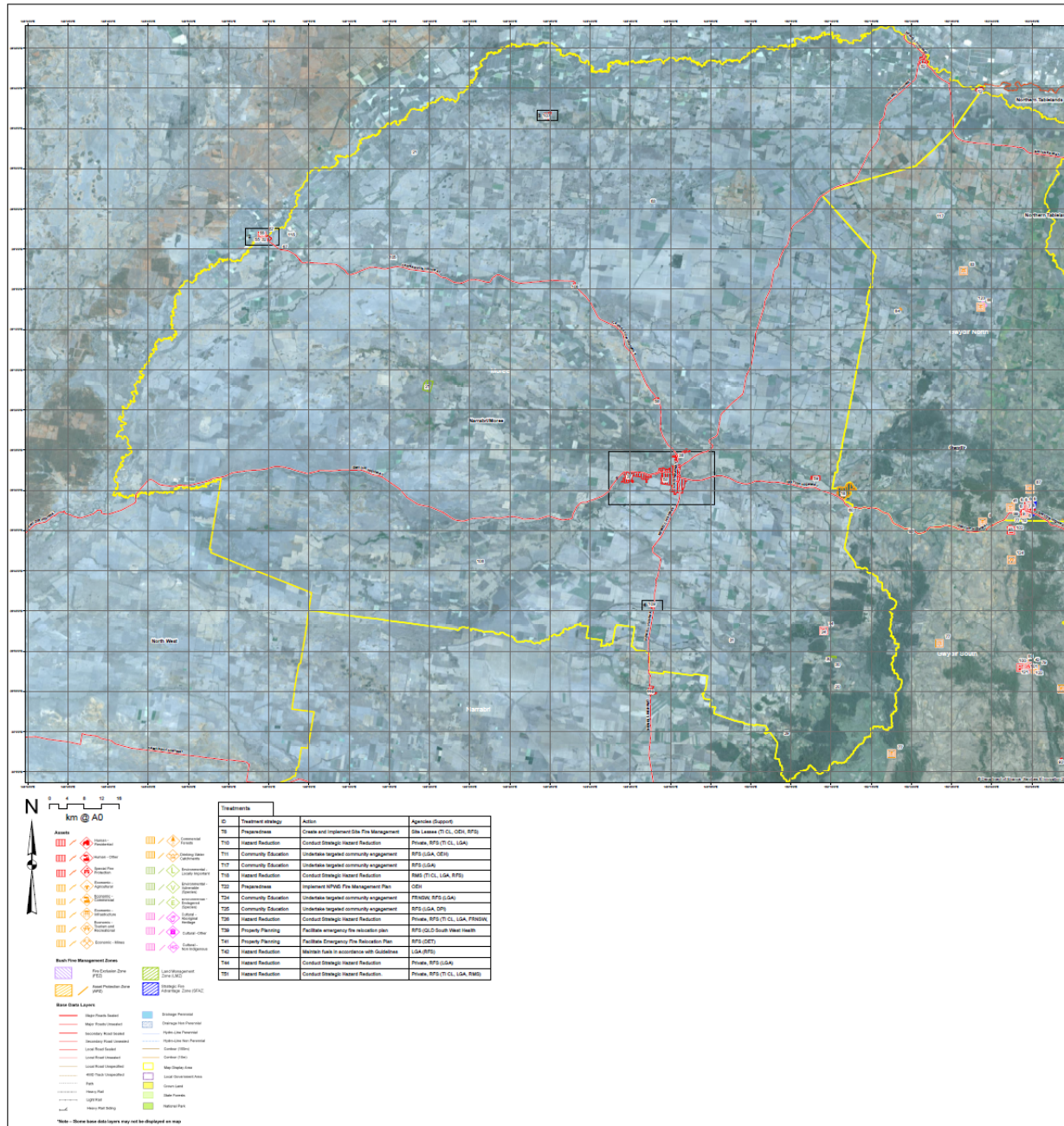
									reduced fire impact on the assets.					
							Community Education	17	Undertake targeted community engagement activities	Areas are targeted as part of ongoing local and State Public Awareness/Education campaigns including newspapers, radio, and the internet.	RFS		LGA	17/18, 18/19, 19/20, 20/21, 21/22
NA	111	Edgeroi	Edgeroi	Narrabri	Human Settlement	Residential	Community Education	17	Undertake targeted community engagement activities	Areas are targeted as part of ongoing local and State Public Awareness/Education campaigns including newspapers, radio, and the internet.	RFS		LGA	17/18, 18/19, 19/20, 20/21, 21/22
							Hazard Reduction	10	Conduct Strategic Hazard Reduction	Conduct, as required, hazard reduction in areas that will result in reduced fire impact on the assets.	Private;RFS		TI CL;LGA	18/19, 20/21
NA	112	Boggabri	Boggabri NSW	Narrabri	Human Settlement	Residential	Community Education	24	Undertake targeted community engagement activities	Areas are targeted as part of ongoing local and State Public Awareness/Education campaigns including newspapers, radio, and the internet.	FRNSW;RFS		LGA	17/18, 18/19, 19/20, 20/21, 21/22
							Hazard Reduction	26	Conduct Strategic Hazard Reduction	Conduct, as required, hazard reduction in areas that will result in reduced fire impact on the	Private;RFS		TI CL;LGA;FRNSW;RMS	

										assets.						
NA	113	Whiting / Haires Estate	Old Gunnedah Road	Narrabri	Human Settlement	Residential	Preparedness	50	Inspect and maintain Whiting Lane	Inspect and maintain Whiting Lane as a strategic fire control line.	LGA					17/18, 18/19, 19/20, 20/21, 21/22
							Community Education	17	Undertake targeted community engagement activities	Areas are targeted as part of ongoing local and State Public Awareness/Education campaigns including newspapers, radio, and the internet.	RFS	LGA			17/18, 18/19, 19/20, 20/21, 21/22	
NA	114	Bullarah Primary School	Gwydir Highway	Moree	Human Settlement	Special Fire Protection	Property Planning	41	Facilitate Emergency Fire Relocation Plan	Promote and facilitate emergency fire relocation plan in conjunction with Department of Education and school principal.	RFS		Other	DET		17/18, 18/19, 19/20, 20/21, 21/22
NA	115	Mungindi Rural Fire Service Repeater	Mungindi NSW	Moree	Economic	Infrastructure	Preparedness	6	Create and Implement Site Fire Management Strategy	Create and Implement Fire Management Strategy. Lessee of site in coordination with Crown Lands and NPWS.	Other	Site Lessee		TI CL;OEH; RFS		17/18, 18/19, 19/20, 20/21, 21/22
NA	116	Moree Rural Fire Service Repeater site	Bendyglet Sub-division - Moree	Moree	Economic	Infrastructure	Preparedness	6	Create and Implement Site Fire Management Strategy	Create and Implement Fire Management Strategy. Lessee of site in coordination with Crown Lands and NPWS.	Other	Site Lessee		TI CL;OEH; RFS		17/18, 18/19, 19/20, 20/21, 21/22

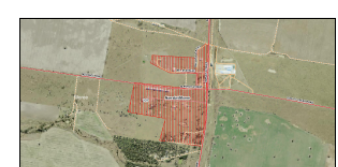
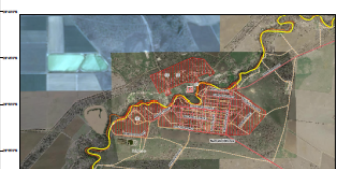
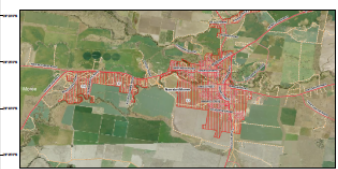
NA	117	North Star Village	North Star	Gwydir North	Human Settlement	Residential	Community Education	47	Undertake Targeted Community Engagement	Areas are targeted as part of ongoing local and State Public Awareness/Education campaigns including newspapers, radio, and the internet.	RFS				17/18, 18/19, 19/20, 20/21, 21/22
NA	118	Croppa Creek Bowling Club	Croppa Creek Village	Gwydir North	Economic	Tourist and Recreation	Hazard Reduction	30	Undertake Strategic Hazard Reduction	Monitor Fuel Loads and Undertake Hazard Reduction when required.	LGA		TI CL;RFS		17/18, 18/19, 19/20, 20/21, 21/22
NA	119	Gravesend Sports Ground	Gwydir Street Gravesend	Gwydir North	Economic	Tourist and Recreation	Hazard Reduction	27	Undertake Strategic Hazard Reduction	Monitor Fuel Loads and Undertake Hazard Reduction when required.	LGA		RFS		17/18 19/20, 21/22
NA	120	Bingara West	Bingara	Gwydir South	Human Settlement	Residential	Community Education	47	Undertake Targeted Community Engagement	Areas are targeted as part of ongoing local and State Public Awareness/Education campaigns including newspapers, radio, and the internet.	RFS				17/18, 18/19, 19/20, 20/21, 21/22
NA	121	Bingara South		Gwydir South	Human Settlement	Residential	Community Education	47	Undertake Targeted Community Engagement	Areas are targeted as part of ongoing local and State Public Awareness/Education campaigns including newspapers, radio, and the internet.	RFS				17/18, 18/19, 19/20, 20/21, 21/22
							Hazard Reduction	27	Undertake Strategic Hazard Reduction	Monitor Fuel Loads and Undertake Hazard Reduction when required.	LGA		RFS	17/18 19/20, 21/22	

NA	122	Bingara Hospital	Keera Road Bingara	Gwydir South	Human Settlement	Special Fire Protection	Community Education	52	Facilitate Emergency Fire Relocation Plan	Facilitate the creating and implementation of an emergency evacuation plan	FRNSW;Other	NSW Health			17/18, 18/19, 19/20, 20/21, 21/22
NA	123	Yallaroi Community Hall	North Star Road Yallaroi	Gwydir North	Cultural Heritage	Other	Hazard Reduction	27	Undertake Strategic Hazard Reduction	Monitor Fuel Loads and Undertake Hazard Reduction when required.	LGA		RFS		17/18 19/20, 21/22
NA	124	Ceramic Break Park	10km South Warialda Fossickers Way	Gwydir South	Economic	Tourist and Recreation	Community Education	47	Undertake Targeted Community Engagement	Areas are targeted as part of ongoing local and State Public Awareness/Education campaigns including newspapers, radio, and the internet.	RFS				17/18, 18/19, 19/20, 20/21, 21/22
NA	125	North Star Sporting Club	North Star Village	Gwydir North	Economic	Tourist and Recreation	Community Education	47	Undertake Targeted Community Engagement	Areas are targeted as part of ongoing local and State Public Awareness/Education campaigns including newspapers, radio, and the internet.	RFS				17/18, 18/19, 19/20, 20/21, 21/22

Appendix 3 Maps 1 - 4



Map Ref	Asset Name	Asset Type	Subtype	Risk Level	Priority	Treatment
13	Township	Human	Residential	Very High	2C	710,7
14	Local Highway	Economic	Infrastructure	Very High	2C	718
15	Residential Property in Moine	Human	Residential	High	3A	725
16	Thames' Power Dam	Economic	Industrial	High	3A	728
20	Endangered Environmental Site	Environment	Endangered	High	3A	710
21	Endangered Environmental Site	Environment	Endangered	High	3A	723
24	Terry Hill	Human	Residential	High	3A	710,7
26	Valewaka Environmental Site	Environment	Vulnerable	High	3A	711
27	Valewaka Environmental Site	Environment	Vulnerable	High	3A	712
28	Valewaka Environmental Site	Environment	Vulnerable	High	3A	711
30	Mungindi	Human	Residential	High	3A	710,7
32	Denighan Subdivision	Human	Residential	High	3A	717,10
36	Woolman	Human	Residential	High	3A	717,10
38	Endangered Environmental Site	Environment	Endangered	High	3C	722
40	Moine	Human	Residential	Medium	4	724,9
41	Mungindi - Old site	Human	Residential	Medium	4	717,8
47	Mungindi Hospital	Human	Special Fire	Medium	4	728
50	Ashby	Human	Residential	Medium	4	710,7
52	Palmerston	Human	Residential	Medium	4	710,7
60	Stingay	Human	Residential	Medium	4	717,10
67	Geoscience Australia Broadbanding	Economic	Infrastructure	Medium	4	76
74	102 Terry Hill	Human	Other	Medium	4	742
102	Woolman	Human	Residential	Low	3A	721,10
107	Soort	Human	Residential	Low	3A	717,10
108	Melrose Primary School	Human	Special Fire	Low	3A	741
109	Quinn	Human	Residential	Low	3A	717,10
114	Balshah Primary School	Human	Special Fire	Low	3A	741
115	Mungindi Rural Fire Service Repeater	Economic	Infrastructure	Low	3A	76
116	Moine Rural Fire Service Repeater site	Economic	Infrastructure	Low	3A	76



Namoi/Gwydir BFM Bush Fire Risk Management Plan 2018

Moose - Map Display Area
 Map 2 of 4

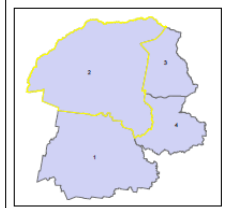
This Bush Fire Risk Management Plan (BFRMP) has been prepared by the Namoi/Gwydir Bush Fire Management Committee (BFRMC) pursuant to section 22 of the Rural Fires Act 2002.

The aim of this BFRMP is to reduce the adverse impact of bush fires on life, property and the environment.

The objectives of this BFRMP are to:

- reduce the number of bush-affected bush fire ignition that cause damage to life, property or the environment;
- provide for the reduction, avoidance and control of bush fire risk while maintaining environmental and heritage values;
- reduce the community's vulnerability to bush fires by improving its preparedness; and
- effectively contain bush fires with a potential to cause damage to life, property and the environment.

This map forms part of the BFRMP for the Namoi/Gwydir BFM, covering the local government area (LGA) of the Namoi/Gwydir BFM. It is designed to provide further details on the BFRMP, map the assets assessed and the assessment process used.



Review
 Under the Rural Fires Act 2002 this plan must be reviewed and updated with each assessment year period following the completion of the BFRMP. The Namoi/Gwydir BFRMC will also review this plan at intervals. This may be triggered by a range of circumstances, including but not limited to:

- changes to the BFRMC area, organisational responsibilities or legislation;
- changes to bush fire risk in the area; or
- following a major bush fire event.

Assets
 This BFRMP identifies the assets that are considered by the Namoi/Gwydir BFRMC and community to be at risk from bush fires, assesses the bush fire risk to each asset and assigns treatment strategies to reduce the risk. Assets in the BFRMP area identified as being assessed are not reporting treatments within the life of this plan are listed in the appendix to the BFRMP document. The map file number "00" denotes non-reporting assets.

Treatments
 Specific treatments designed to reduce bush fire risk are listed in the treatment table and listed to the assets which they are designed to protect. Districts BFRMC will implement a set of treatments to a specific asset which occur as an ongoing activity in the area.

- meeting the bush fire plan and map;
- ensuring developments in the bush fire plan meet compliance with Planning for Bush Fire Protection;
- using the Local Environment Plans (LEP) to control development in areas with a high bush fire risk;
- verifying the standard bush fire danger period as required;
- identifying critical bush fire assets;
- provision of annual bush fire reports;
- identifying critical bush fire assets;
- assessing and managing compliance with strategic firefighting resource allocation management systems;
- preparation of a SES Operations Coordination Plan;

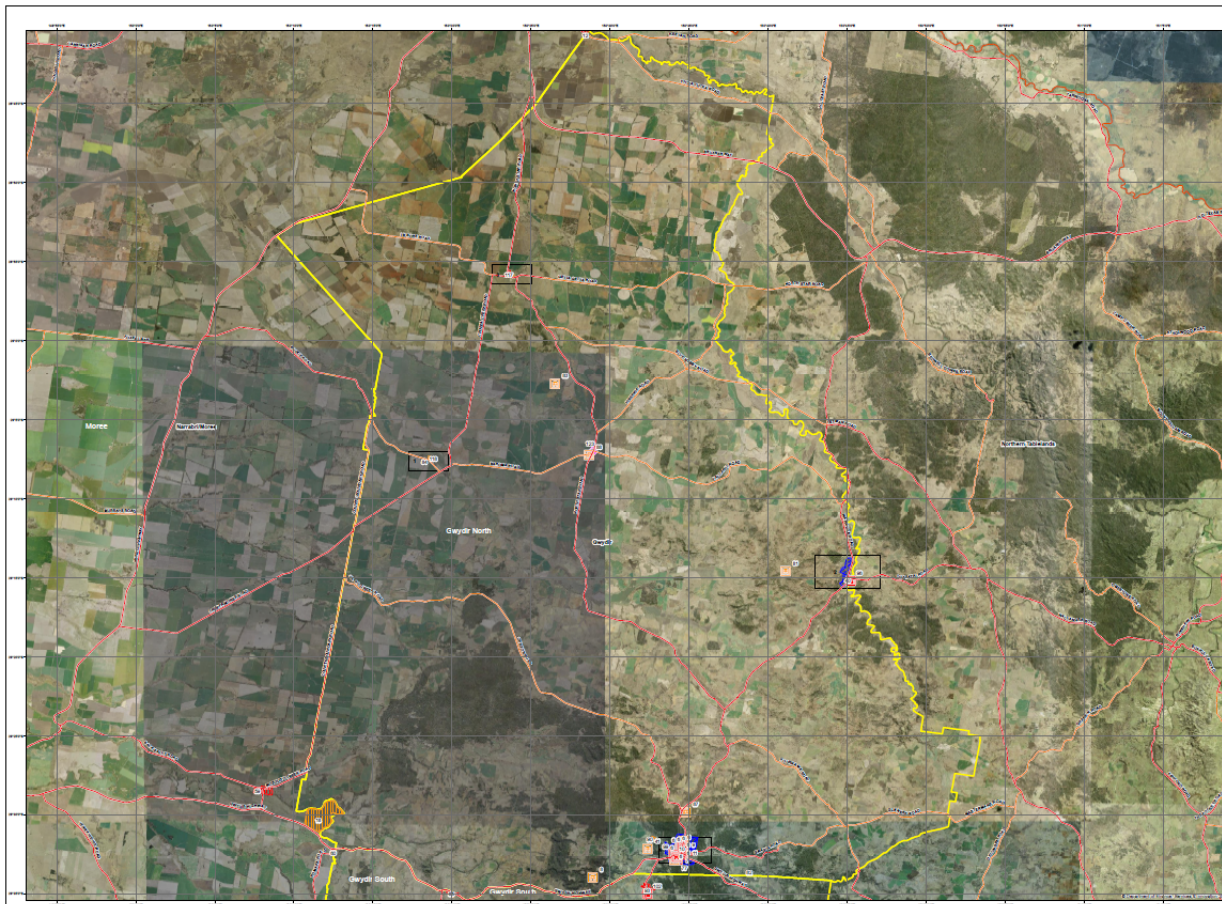
Note on 102: All assets not specifically mapped as an ATE, SFAC or FEZ are considered as AUC for this risk management plan. For assets identified by an AUC listing on the map, please refer to the BFRMP document for the specific asset management objectives.

Asset	Purpose	Suppression	Zone
Asset Protection Zone	To protect human life, property and critical assets and values.	To enable the safe and timely removal of assets within the zone.	As per RFS Asset Protection Zone.
Strategic Fire Exclusion Zone	To provide strategic exclusion of the bush fire risk to reduce the potential for bush fire to affect critical assets.	To improve the bush fire risk to reduce the potential for bush fire to affect critical assets.	Zone with related to suppression and protection objectives and strategies.
Land Management Zone	To meet relevant bush fire risk management objectives to areas where SFACs are not appropriate.	To meet relevant bush fire risk management objectives to areas where SFACs are not appropriate.	As per the bush fire risk management objectives, e.g. of the relevant SFACs and the protection and management objectives.
Fire Exclusion Zone	To exclude bush fire.	N/A	Vehicle dependent bush fire exclusion zone.

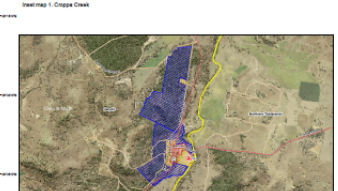
Disclaimer
 The Namoi/Gwydir BFRMC makes every effort to ensure the quality of the information available on this map. Before relying on the information on this map, users should verify the accuracy, completeness and relevance for their purposes and should consult any appropriate professional advice relevant to their particular circumstances.

The Namoi/Gwydir BFRMC can not guarantee and assumes no legal liability or responsibility for the accuracy, timeliness or completeness of the information. Copyright Namoi/Gwydir BFRMC 2018.

Printed by: Tuesday, 27 November 2018
 BFRMP version 2.1.260



Asset Ref	Asset Name	Asset Type	Subtype	Risk Level	Priority	Treatment
6	Wentworth	Human	Residential	Very High	2A	T12-T5
7	Wentworth High School	Human	Specialist Prem	Very High	2A	T14-T15-T17
8	Wentworth Repurposed	Economic	Infrastructure	Very High	2A	T19
9	Wentworth Hospital	Human	Specialist Prem	Very High	2A	T13-T16
10	Wentworth Pk School	Human	Specialist Prem	Very High	2A	T13-T14
11	Wentworth Nursing Home	Human	Specialist Prem	Very High	2A	T14-T15
40	Cookson Village	Human	Residential	High	2A	T27-T28
41	Wentworth Airport	Economic	Infrastructure	High	2A	T19-T20
75	Crooked Creek School	Human	Specialist Prem	Medium	4	T42-T50
76	Cookson St Repurposed	Economic	Infrastructure	Medium	4	T45
82	Crooked Creek	Economic	Tourist and	Medium	4	T46
83	MT Mitchell Communications	Economic	Infrastructure	Medium	4	T45
84	Crooked Creek Village	Human	Residential	Medium	4	T47-T50
85	Greenwood Village	Human	Residential	Medium	4	T50
86	Wentworth Sub Station	Economic	Infrastructure	Medium	4	T19
87	3 Mile Radio Repurposed	Economic	Infrastructure	Medium	4	T45
88	Wentworth Sub Station	Economic	Infrastructure	Medium	4	T45
89	Wentworth Main Centre	Economic	Public and	Medium	4	T27
91	Greenwood School	Human	Specialist Prem	Medium	4	T49
98	HSP Cookson	Human	Other	Medium	4	T48
99	HSP Wentworth	Human	Other	Medium	4	T48
107	North Star Village	Human	Residential	Low	3A	T47
108	Crooked Creek Bowling Club	Economic	Tourist and	Low	3A	T50
109	Greenwood Sports Ground	Economic	Tourist and	Low	3A	T52
123	Wentworth Community Hall	Cultural	Other	Low	3A	T27
132	North Star Bowling Club	Economic	Tourist and	Low	3A	T47



Namoi/Gwydir BFM Bush Fire Risk Management Plan 2018

Gwydir North - Map Display Area
 Map 3 of 4

This Bush Fire Risk Management Plan (BFRMP) has been prepared by the Namoi/Gwydir Bush Fire Management Committee (BFRMC) pursuant to section 10 of the Rural Fire Act 1997.

The aim of this BFRMP is to reduce the adverse impact of bush fire on life, property and the environment.

The objectives of this BFRMP are to:

- reduce the number of bush fires that ignite that cause damage to life, property or the environment;
- minimise the loss of life and property and the extent and intensity of bush fires while minimising environmental damage;
- reduce the community's vulnerability to bush fire by improving its preparedness;
- effectively contain fires with a potential to cause damage to life, property and the environment.

This map forms part of the BFRMP for the Namoi/Gwydir BFRMC, covering the local government area of Gwydir North. It should be read in conjunction with the accompanying BFRMP document which provides further details on the BFRMC and the assets assessed and the risk assessment process used.



Review
 Under the Rural Fire Act 1997 this plan must be reviewed and updated within each calendar year period following the completion of the BFRMC. The Namoi/Gwydir BFRMC will also review the plan as necessary. The plan is required to be a range of:

- changes to the BFRMC area, organisational responsibilities or legislation;
- changes to the bush fire risk area or;
- following a major fire event.

Assets
 The BFRMC identifies the assets that are considered by the Namoi/Gwydir BFRMC and assigns treatment designations to the assets. Assets in the BFRMC are classified as 'High', 'Medium' or 'Low' risk. Other assets within the BFRMC area that were assessed as not requiring treatment within the BFRMC are listed in the Appendix to the BFRMP document. The Map Ref number 'BFRMC' denotes non-assessed assets.

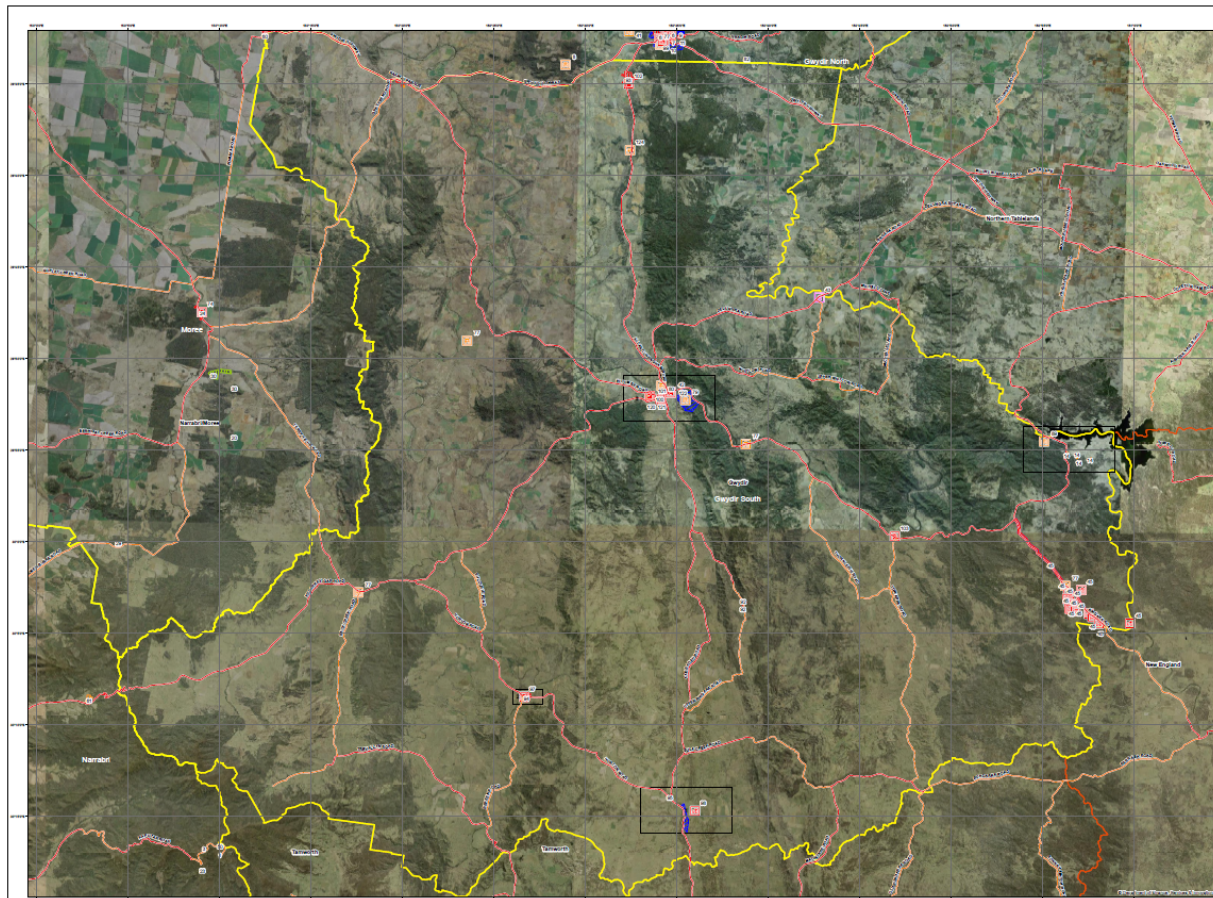
Treatments
 Specific treatments assigned to assets in the Namoi/Gwydir area are listed in the Appendix to the BFRMP document. The BFRMC will also review the plan as necessary. The BFRMC will also review the plan as necessary. The BFRMC will also review the plan as necessary.

Map on LGA Assets not classified as per RFS, BFRMC or PFC
 Assets on the map which are not classified as per RFS, BFRMC or PFC are indicated as LAC for this risk management plan. For areas identified by an LAC on the map, please refer to the BFRMP document for the specific risk management objectives.

Zone	Purpose	Suppression	Zone
Asset Protection Zone	To protect human life, property and high value public assets and assets.	To exclude the assets from the zone of effect of bush fire suppression strategies by Asset Protection Zone.	As per RFS document regarding Asset Protection Zone.
Strategic Advantage Zone	To provide strategic advantage to the zone by reducing the risk of bush fire ignition and spread.	To improve the zone's resilience and reduce the risk of bush fire ignition and spread.	Zone with related to suppression objectives and objectives: <ul style="list-style-type: none"> Asset Protection Zone Asset Protection Zone Asset Protection Zone
Local Management Zone	To meet resident and business objectives in areas where bush fire risk is not high.	To meet the objectives of the zone and reduce the risk of bush fire ignition and spread.	As per the BFRMC document regarding Local Management Zone.
Fire Exclusion Zone	To exclude bush fire.	To exclude bush fire.	As per the BFRMC document regarding Fire Exclusion Zone.



Treatment	Asset	Agency (Design)
T12	Treatment Strategy	AGPS
T13	Hazard Reduction	Mechanical Hazard Reduction in APZs
T14	Community Education	Facilities Emergency Fire Relocation Plan
T15	Property Planning	Implement Community Protection Plan
T16	Property Planning	Create and implement Site Management Plan
T17	Hazard Reduction	Understand Strategic Hazard Reduction
T18	Property Planning	Implement Community Protection Plan
T19	Hazard Reduction	Understand Strategic Hazard Reduction
T20	Property Planning	Create and implement Site Management Plan
T21	Property Planning	Implement BFRMC Fire Management Strategy
T22	Community Education	Understand Targeted Community Engagement
T23	Community Education	Facilities Emergency Fire Relocation Plan



Map Ref	Asset Name	Asset Type	Subtype	Risk Level	Priority	Treatment
14	Capeken Welfare State Park	Economic	Tourist and	Very High	2C	T19
43	Turtall Lodge Nursing Home	Human	Social Care	High	3A	T19
45	West Creek Mission Memorial	Cultural	Religious	High	3A	T19
46	New Dispensary on Boreana Road	Human	Residential	High	3A	T19
79	Bathurst Communications Tower	Economic	Infrastructure	Medium	4	T47
80	Bingera Sub Station	Economic	Infrastructure	Medium	4	T19
88	Capeken Cart Power Station	Economic	Infrastructure	Medium	4	T19
89	Upper Bingera	Human	Residential	Medium	4	T47
91	Warraba Park	Human	Residential	Medium	4	T19
94	Upper Hinton	Human	Residential	Medium	4	T47
95	Collabean	Human	Residential	Medium	4	T19
87	NBP Upper Hinton	Human	Other	Medium	4	T47
96	Lower Hinton/Collabean	Human	Residential	Medium	4	T47
102	NBP Bingera	Human	Other	Medium	4	T47
103	NBP Gwydir Quar	Human	Other	Medium	4	T47
104	NBP Warraba Park	Human	Other	Medium	4	T47
105	NBP Leane Station	Human	Other	Medium	4	T47
106	Bingera West	Human	Residential	Low	3A	T47
121	Bingera South	Human	Residential	Low	3A	T47
122	Bingera Hospital	Human	Special Care	Low	3B	T47
124	Capeken Break Park	Economic	Tourist and	Low	3A	T47

Namoi/Gwydir BFMC Bush Fire Risk Management Plan 2018

Gwydir South - Map Display Area
 Map 4 of 4

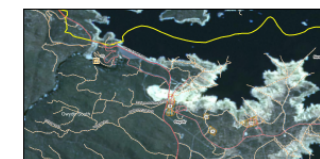
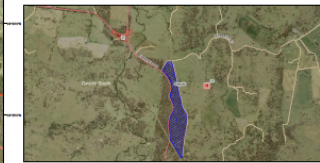
This Bush Fire Risk Management Plan (BFRMP) has been prepared by the Namoi/Gwydir Bush Fire Management Committee (BFMC) pursuant to section 52 of the Rural Fires Act 1997.

The aim of this BFRMP is to reduce the adverse impact of bush fire on life, property and the environment.

The objectives of this BFRMP are to:

- reduce the number of human-inhabited bush fire ignition sites across damage to life, property and the environment;
- minimise bush fire spread and intensity of bush fire while maintaining environmental integrity;
- reduce the community's vulnerability to bush fire by improving its preparedness and
- effectively contain bush fire with a potential to cause damage to life, property and the environment.

This map forms part of the BFRMP for the Namoi/Gwydir BFMC, covering the local government areas of Gwydir North, Gwydir South and Hinton. It should be read in conjunction with the accompanying BFRMP documents which provide further details on the BFMC area, the assets included and the assessment process.



ID	Treatment Strategy	Action	Agency (Support)
T19	Property Planning	Implement Site Management Plan	Site Owner
T27	Hazard Reduction	Understand Strategic Hazard Reduction	LSA (BFC)
T30	Hazard Reduction	Implement Strategic Hazard Reduction	LSA (BFC)
T31	Hazard Reduction	Understand Strategic Hazard Reduction	LSA (BFC), WFL
T32	Hazard Reduction	Hazard Reduction by SMC2	T.C. (BFC)
T46	Property Planning	Create and Implement Site Management Plan	Site Lessee (BFC)
T47	Community Education	Understand Targeted Community Engagement	BFC
T48	Property Planning	Warraba Park in accordance with Guidelines	LSA (T.C. BFC)
T50	Community Education	Facilitate Emergency Fire Reduction Plan	WFL (BFC), WFL (Hinton)

Review

Under the Rural Fires Act 1997 this plan must be reviewed and updated when circumstances have changed. The review process will be undertaken by the BFMC. The BFMC will review the plan as necessary. This may be triggered by a change of circumstances, including but not limited to:

- changes to the BFMC area, organisational responsibilities or legislation;
- changes to the bush fire risk in the area; or
- following a major bush fire event.

Assets

The BFRMP identifies the assets that are considered by the Namoi/Gwydir BFMC and the BFMC will do its best to ensure that measures to reduce the bush fire risk and assign treatments designed to mitigate the risk. Assets in the BFRMP are identified as requiring treatment or listed in the assets table. Other assets within the BFMC area that were assessed but not requiring treatment within the life of this plan are listed in the appendix to the BFRMP documents. The Map Ref column 'M' denotes non-assessed assets.

Specific treatments assigned to assets in the Namoi/Gwydir area are listed in the treatment table and listed to the assets with an assigned treatment. Identified BFMC-wide treatments (i.e. not listed in a specific asset) which occur on an ongoing basis within the BFMC area include:

- ensuring development in the bush area is done in compliance with Planning for Bush Fire Safety;
- using the Local Environment Plan (LEP) to control development in areas with a bush fire risk;
- ensuring bush fire risk is managed in the bush (e.g. fuel reduction);
- investigation of bush fire causes;
- ensuring appropriate education;
- assessing and managing compliance with strategic fire-fighting resource allocation management systems;
- provision of a BFC Cooperative Coordination Plan.

Note: An LSC is an asset not necessarily located on an APL, BFC or TFC area considered as LSC for this risk management plan. For assets identified by an LSC origin on the map, please refer to the BFRMP document for the specific asset management objectives.

Zone	Purpose	Suppression	Zone
Asset Protection Zone	To protect human life, property and safety of assets located within the zone and reduce the impact on individual assets.	To enable the early use of BFRMP assets to contain bush fire and reduce the impact on individual assets.	As per BFC fire-fighting resources and procedures for Asset Protection Zone.
Strategic Fire Advantage Zone	To provide strategic protection advantages which will reduce the bush fire risk and reduce the impact on individual assets.	To improve the bush fire risk and reduce the impact on individual assets. To reduce the bush fire risk and reduce the impact on individual assets.	Zone with related objectives and suppression resources as per BFC fire-fighting resources and procedures for Strategic Fire Advantage Zone.
Land Management Zone	To meet relevant land management objectives where BFCs are not appropriate.	As per the land management objectives of the responsible land management agency. To reduce the bush fire risk and reduce the impact on individual assets.	As appropriate to land management objectives, e.g. bush fire risk management, fire-fighting resources and procedures for Land Management Zone.
Risk Evaluation Zone	To evaluate bush fire risk.	Risk	Incidents dependent on site specific bush fire risk management objectives.

Disclaimer

The Namoi/Gwydir BFMC makes every effort to ensure the quality of the information available to its members, relying on the information in its maps, which should be used as a guide only. The BFMC does not warrant, represent or guarantee the accuracy, completeness and reliability of the information. Copyright: Namoi/Gwydir BFMC 2018.

The Namoi/Gwydir BFMC does not guarantee and assumes no legal liability or responsibility for the accuracy, currency or completeness of the information. Copyright: Namoi/Gwydir BFMC 2018.

Prepared by: _____ of Namoi/Gwydir BFMC
 Date checked: Tuesday, 27 November 2018

BFRMP version 2.1.2.6.0