



Department of  
Primary Industries  
Lands



*Blue Mountains Bush Fire Management Committee*  
**Hazard Reduction Notification**

Please be advised that on behalf of the Blue Mountains Bush Fire Management Committee (BMBFMC), the NSW Rural Fire Service (RFS) is intending to undertake Hazard Reduction (HR) burning, weather permitting, at the following locations this week:

Date **Saturday 20<sup>th</sup> May and Sunday 21<sup>st</sup> May 2017**  
Name of HR **Steiner School (HAZ 2011-1)**  
Location **between Clearview Pde & Mount View Ave, Hazelbrook**  
Size **5.77 hectares**  
Lead Agency **RFS**

Date **Saturday 20<sup>th</sup> May and Sunday 21<sup>st</sup> May 2017**  
Name of HR **Cross St West (WAR 2008-1)**  
Location **between Cross St & Rickard Rd, Warrimoo**  
Size **24.18 hectares**  
Lead Agency **RFS**

Further information regarding these activities can be found at [www.rfs.nsw.gov.au/hr](http://www.rfs.nsw.gov.au/hr)

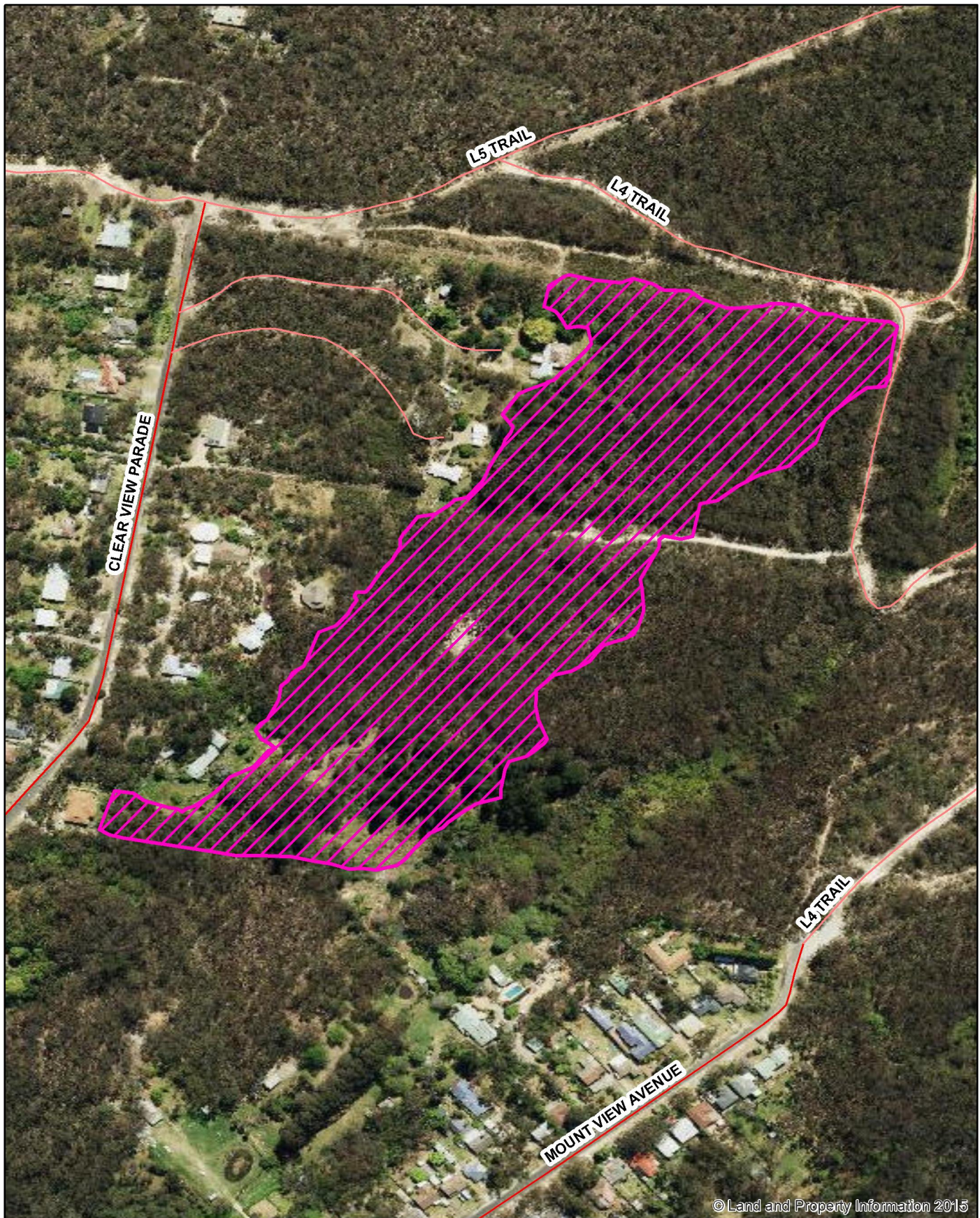
or by contacting



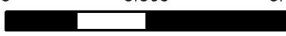
NSW Rural Fire Service  
Blue Mountains District - 4784 7444  
[bluemountains@rfs.nsw.gov.au](mailto:bluemountains@rfs.nsw.gov.au)

Regards,

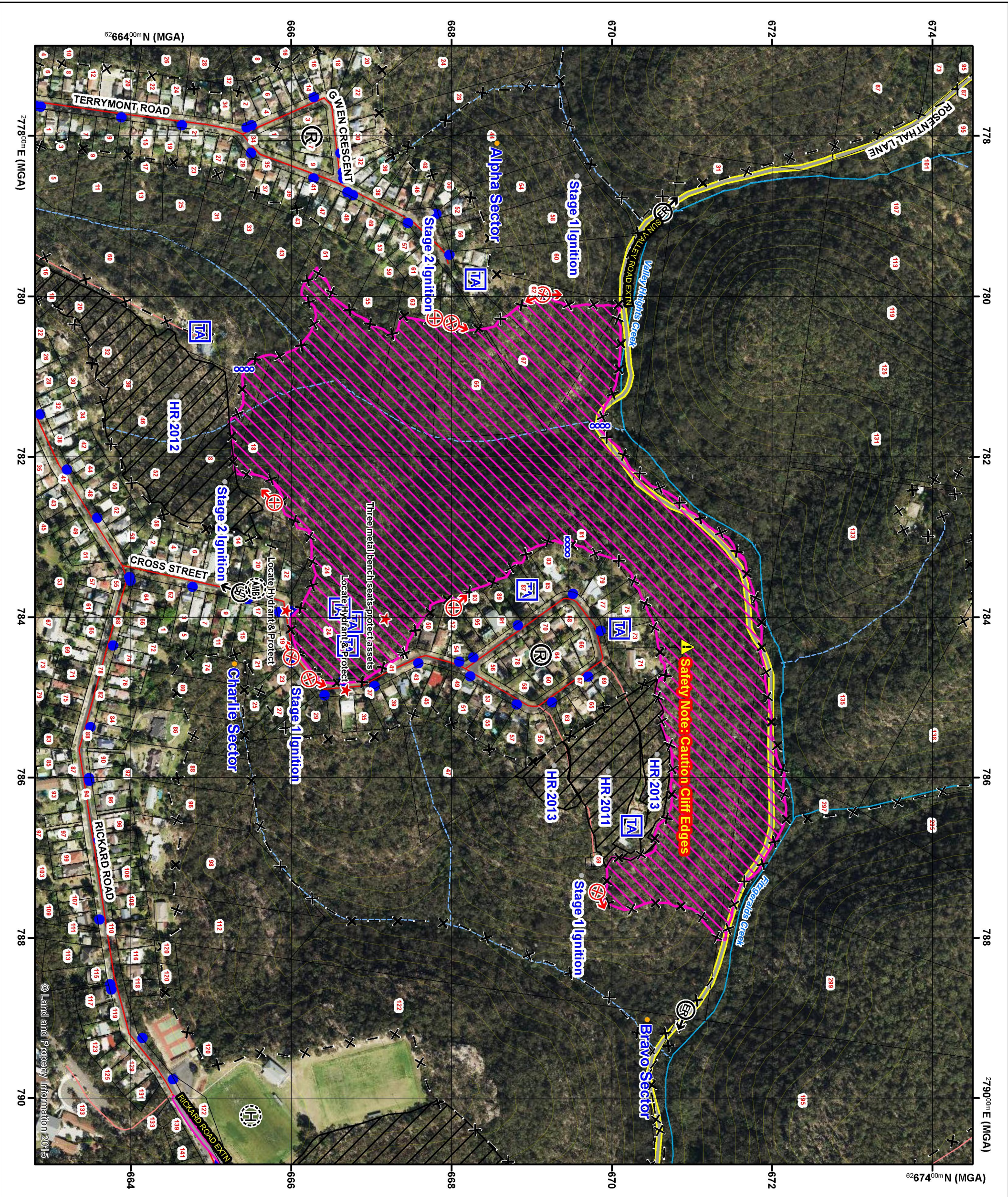
Superintendent David Jones  
**Executive Officer**  
On behalf of the Blue Mountains Bushfire Management Committee





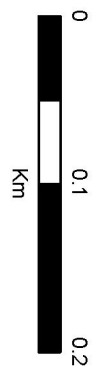
	MAP DESCRIPTION	LEGEND	WARNING INFORMATION	KEY MAP
 <p><b>BLUE MOUNTAINS</b></p>	Steiner School HR		<ol style="list-style-type: none"> <li>This map has been prepared by a NSW Government Agency ("the Agency") using data supplied to it by other agencies and entities.</li> <li>The Agency has not verified or checked the data used to prepare this map. The map may contain errors and omissions. The Agency has not made any attempt to ground truth the map.</li> <li>There will be a margin of error in relation to the location of features recorded on the map. The Agency is unable to specify the extent or magnitude of that margin of error.</li> <li>Significant changes may have occurred:               <ol style="list-style-type: none"> <li>in the time between which the data was originally collected and the map produced; and</li> <li>since the map was produced.</li> </ol> </li> <li>Users must, wherever possible, ground truth the map before relying on it or the accuracy of the map or the information recorded on this map for any purpose.</li> <li>The Agency accepts no responsibility for any injury loss or damage arising from the use of this map or any errors or omissions in the information recorded on the map.</li> </ol>	
	<p><b>PRODUCTION INFORMATION</b></p> <p><b>Map Details:</b>            Base Data: © LPI, SPOT, AAM, SKM, OEH, Sensis, Kattron            Map Projection: GCS GDA 1994            Print Date / Time: 25/10/2016 10:39:01 AM            Produced by: John Norris</p>		<p><b>SCALE</b></p> <p>Scale: 1 : 3,500</p> <p>0      0.065      0.13</p>  <p>Km</p>	





**BLUE MOUNTAINS**  
**Cross Street WAR 2008-1**  
**Prescribed Burn Operations Map**

Scale: 1 : 4,500



**LEGEND**

- HR Actual Point
- HR Proposal Point
- ⚡ Burn In Progress Sign
- ⚠ Smoke Hazard Sign
- X — X — Control Line - Completed
- X — X — Control Line - Proposed
- HR Actual Line
- HR Proposal Line
- Machine Cut Track
- Track
- Asset
- Asset - Hazmat
- Endangered Fauna
- Endangered Flora
- Historic Site
- Indigenous Site
- Threatened Asset
- Backburn Line Proposed
- Control Line - Completed
- Control Line - Proposed
- HR Actual Area
- HR Proposal Area
- Previous Burn Area
- Safety Hazard

**PRODUCTION INFORMATION**

**Plot Information:**  
 Date: 14/03/2016  
 Time: 14:54:50

**Fire Statistics:**  
 Proposed Area: 23.05 Ha  
 Actual Perimeter: 3.19 Km  
 Actual Area: 0Ha  
 Actual Perimeter: 0 Km

**Map Details:**  
 Base Data: © LPI, SPOT, AAM, SKM, OEH, Sensis, Kairron  
 Map Projection: GDA 1984 MGA Zone 56  
 Print Date / Time: 7/11/2016 1:32:07 PM  
 Produced by: John Norris

**WARNING INFORMATION**

1. This map has been prepared by a NSW Government Agency ('the Agency') using data supplied to it by other agencies and entities.
2. The Agency has not verified or checked the data used to prepare this map. The Agency cannot be held responsible for any errors or omissions in the map.
3. There will be a margin of error in relation to the location of features recorded on the map. The Agency is unable to specify the extent or magnitude of that margin of error.
4. Significant changes may have occurred:  
 i. In the time between which the data was originally collected and the map produced; and  
 ii. Since the map was produced.
5. Users of the map should ground truth the map before relying on it or the accuracy of the map or the information recorded on the map for any purpose.
6. The Agency accepts no responsibility for any injury, loss or damage arising from the use of this map or any errors or omissions in the information recorded on the map.

**KEY MAP**