

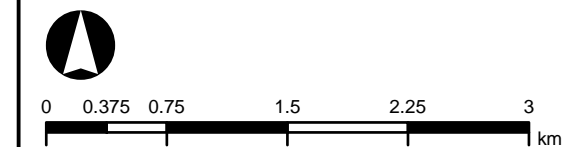


# NSW RURAL FIRE SERVICE MAP BOOK

## Eulimore

### LEGEND

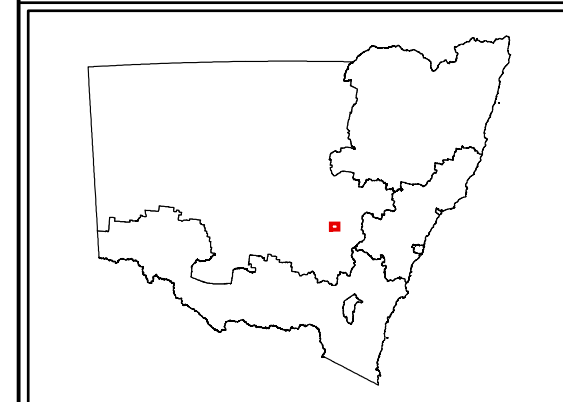
- |                      |                    |
|----------------------|--------------------|
| RFS Region           | Property Boundary  |
| RFS District         | BuiltUp Area       |
| RFS Brigade          | Water Body         |
| RFS NSW RFS          | National Parks     |
| RFS NSW FB           | State Forest       |
| RFS NSW CFU          | Motorway           |
| RFS NSW AS           | Primary Road       |
| RFS NSW PF           | Arterial Road      |
| RFS NSW SES          | Sub Arterial Road  |
| Airport              | Distributor Road   |
| Helipad              | Local Road         |
| Marina               | Urban Service Lane |
| Railway Station      | Track-Vehicular    |
| Education Facilities | Path               |
| Hospitals            | Railway Lines      |
| Nursing Homes        | Rivers             |
| Water Hydrant        | 100m Contour       |
| Fire Trails          | 50m Contour        |
|                      | 10/20m Contour     |



### PRODUCTION INFORMATION

<i>Map Projection</i>	<i>Datum</i>	<i>Zone</i>
MGA	GDA94	55
<i>Produced By</i>	<i>Production Date/Time</i>	
NSW RFS GIS UNIT	2010.04.16 21:54.21	

### KEY MAP

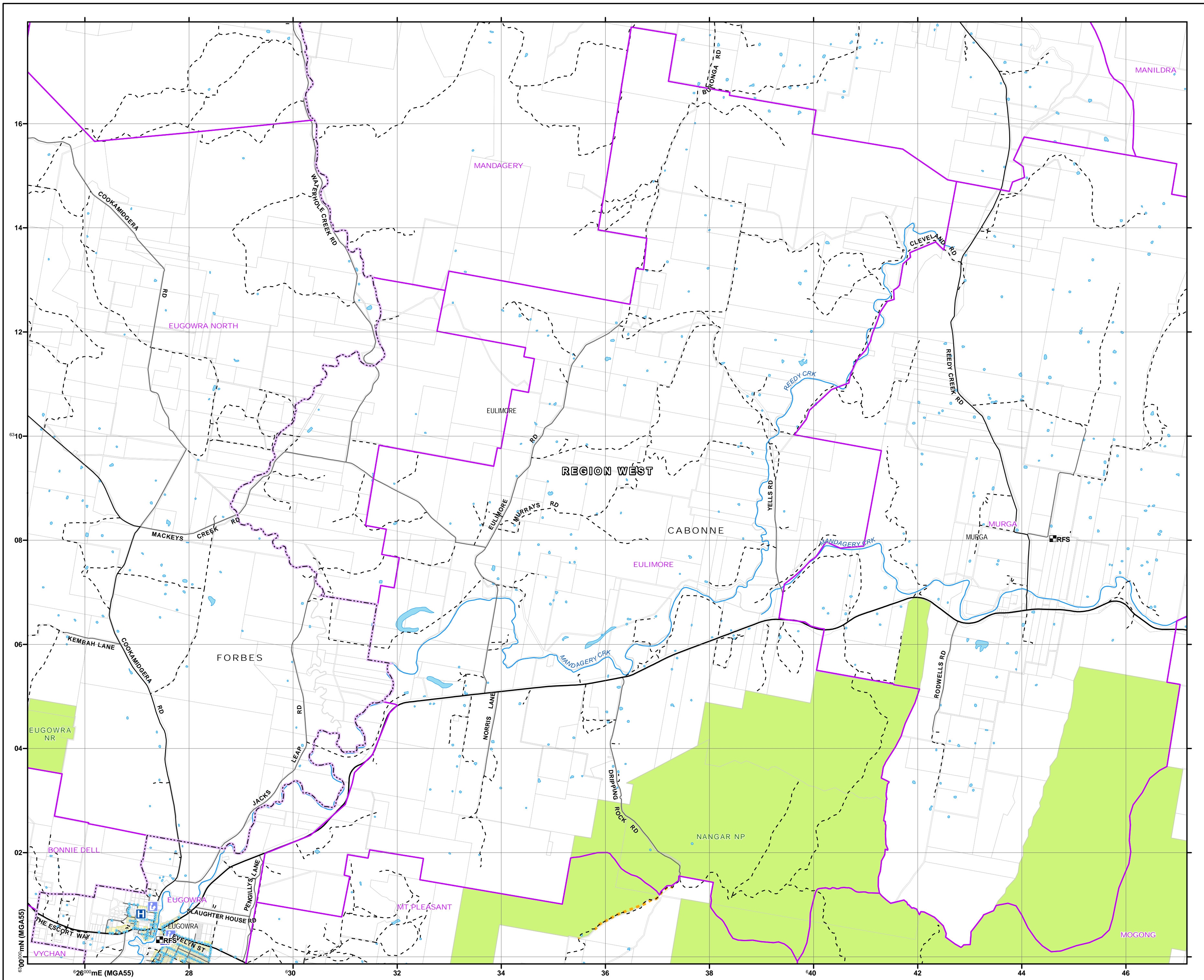


### WARNING INFORMATION

- This map has been prepared by the NSW Rural Fire Service ("the Service") using data supplied to it by other agencies and entities.
- The Service has not verified or checked the data used to prepare this map. This map may contain errors and omissions. The Service has not made any attempts to ground truth the map.
- There will be a margin of error in relation to the location of features recorded on the map. The Service is unable to specify the extent or magnitude of that margin or error.
- Significant changes may have occurred:
  - in the time between which the data was originally collected and the map produced; and
  - since the map was produced.
- Users must, wherever possible, ground truth the map before relying on it or the accuracy of the map or the information recorded on the map for any purpose.
- The Service accepts no responsibility for any injury, loss, or damage arising from the use of this map or any errors or omissions in the information recorded on the map.

### BASE DATA SUPPLIED BY

Australian Government, 2009



630000mN (MGA55)

26°00mE (MGA55)

28

30

32

34

36

38

40

42

44

46