



Bush Fire Survival Map

Garrawarra

What is Your Bush Fire Threat?

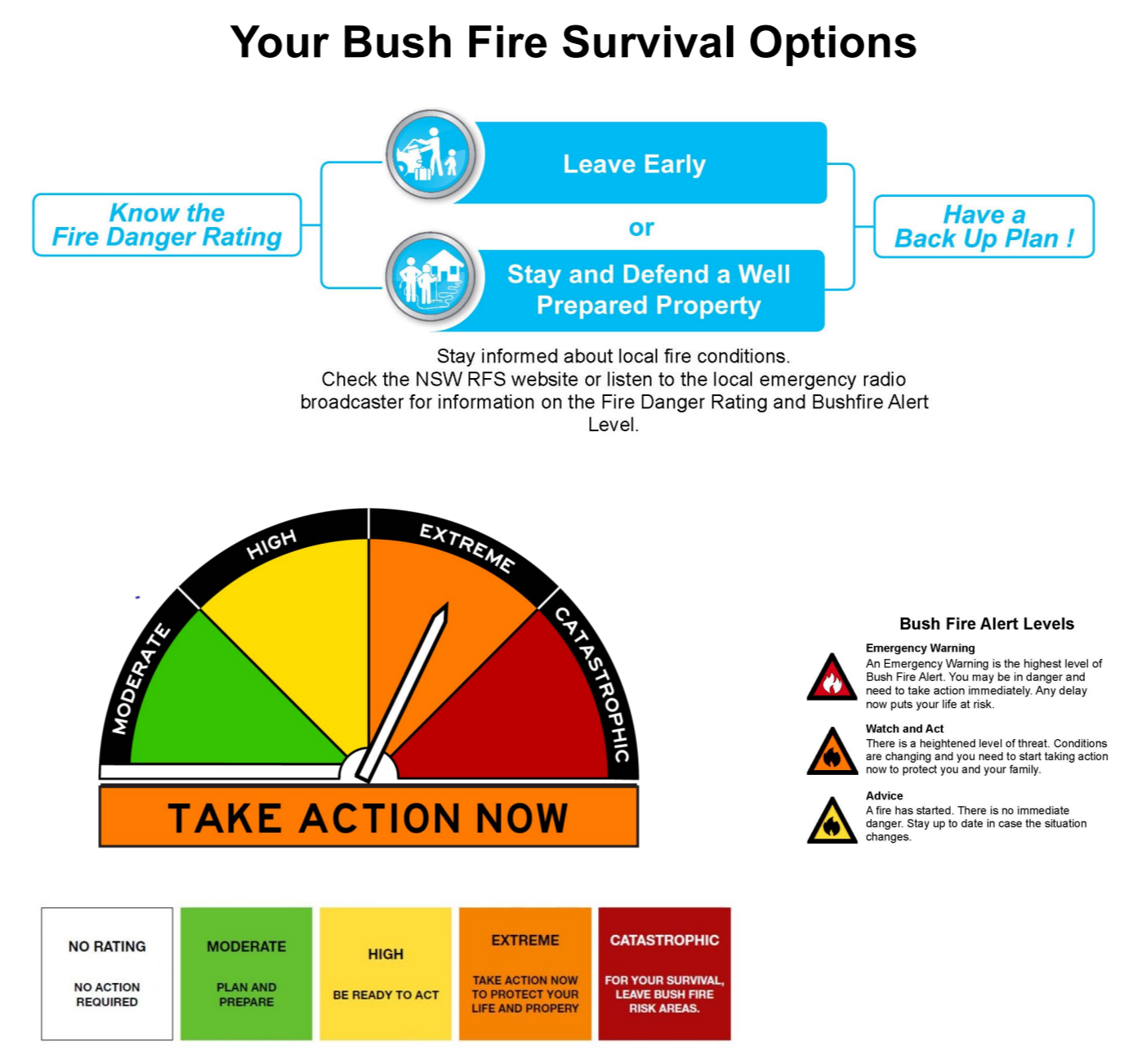
Flame Impact
 You and your property are likely to be directly impacted by flame, deadly levels of radiant heat, significant embers and smoke from a bush fire. The risk of death and property destruction from bush fire is greatest within this zone. Leaving early is your safest option.

Radiant Heat Impact
 You and your property are likely to be impacted by deadly levels of radiant heat, significant embers and smoke from a bush fire. You and your property must be well prepared if you choose to stay and defend.

Ember Impact
 You and your property are likely to be impacted by low levels of radiant heat, significant embers and smoke from a bush fire. You and your property must be well prepared if you choose to stay and defend.

Be Aware
 Embers can cause fires kilometres from the main fire and can impact on houses up to one hour before the fire arrives and several hours after the fire has passed. It only takes one ember to ignite your house and property. Ensure that you and your property are well prepared and monitor your property carefully during a bush fire.

A well designed and prepared building will provide more protection against bush



Neighbourhood Safer Place
 Neighbourhood Safer Places are a Place of Last Resort during a bush fire. Have you identified a Neighbourhood Safer Place and Other Safer Locations in your Bush Fire Survival Plan?
 Your nearest NSP is located at:
 Charles Harper Park
 Walker Street Helensburgh

Main Road
 Roads may become impassable during a bush fire. Your safest option is to Leave Early.

Leave Early
 Leaving early means leaving LONG before a bush fire is in your area. On days of Catastrophic fire danger you should leave early in the morning or even the night before.

KEEP YOURSELF INFORMED
 Emergency Local Broadcaster
 ABC Local Radio 92.9AM ABC National Radio 576 AM
 RTA Traffic Info Line: 132 701
www.facebook.com/nswrfs www.twitter/nswrfs
 1800 NSW RFS
www.rfs.nsw.gov.au

PRODUCTION INFORMATION
 Base Data: LPMA Casastre and Topo Database
 Map Projection: GCS GDA 1994
 Print Date / Time: 14/06/1962
 Produced by: Jim Killen
 1 grid square = 100m²

WARNING INFORMATION

- This map has been prepared by the NSW Rural Fire Service ("The Service") using data supplied to it by other agencies and entities. See the "Data Dictionary" for further information about the sources of this data.
- The Service has not verified or checked the data used to prepare this map. The map may contain errors and omissions. The Service has not made any attempt to ground truth the map.
- There will be a margin of error in relation to the location of features recorded on the map. The Service is unable to specify the extent or magnitude of that margin of error.
- Significant changes may have occurred:
 - In the time between which the data was originally collected and the map produced; and
 - Since the map was produced
- Users must, wherever possible, ground truth the map before relying on it or the accuracy of the map or the information recorded on the map for any purpose.
- The Service accepts no responsibility for any injury loss or damage arising from the use of this map or any errors or omissions in the information recorded on the map.