



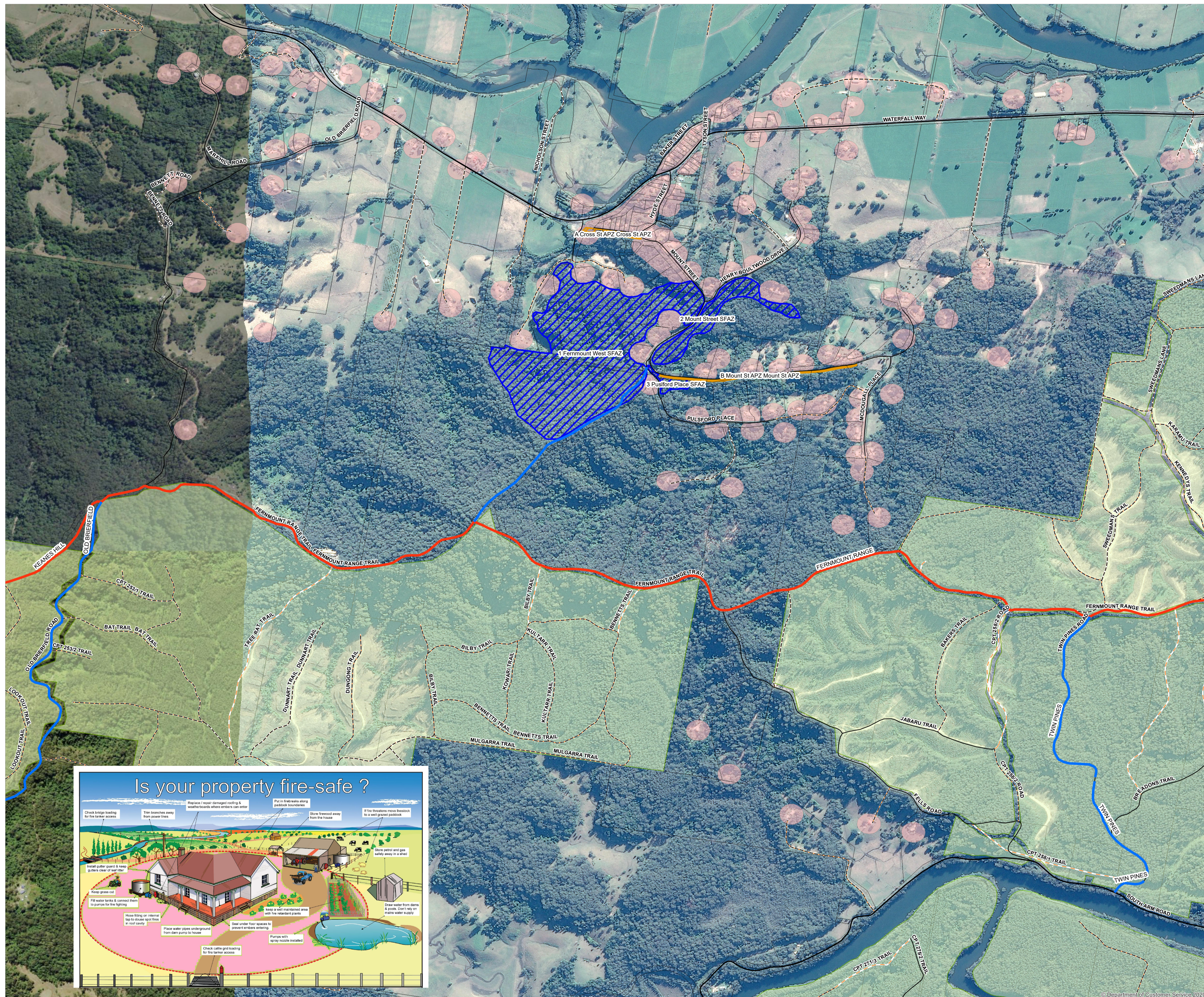
Fernmount

WORKS PROGRAM

Strategy	Action	Mag Ref	Responsible Agency	Supporting Agency	Action Schedule
Property Planning	Develop pre-incident plans for residential bushland interface areas to aid in effective firefighting response	N/A	NSW RFS		Ongoing
	Implement Static Water Supply Program—residential swimming pools and dams	N/A	NSW RFS		2020
Hazard Reduction Mechanical	Inspect Asset Protection Zones (APZ) to ensure compliance to RFS document Standards for APZ	A-B	NSW RFS	BSC	Annually, pre-fire season
	Maintain Asset Protection Zones to Standard	A-B	BSC	NSW RFS	2019-2024
	Maintain road corridors and roadside verges to support safe egress	N/A	BSC	NSW RFS	2019-2024
Hazard Reduction Burning	Inspect Strategic Fire Advantage Zones (SFAZ) to assess fuel loads	1-3	NSW RFS		Annually
	Conduct prescribed burning in SFAZ when the Overall Fuel Hazard reaches 'high'	1-3	NSW RFS	FCNSW	2019-2024
Preparations	Inspect and report on Fernmount Range Trail, Fernmount Fire Road, Twin Pines Road, and Old Brielfield Road Fire Trails to ensure compliance to RFS document standards for Fire Trails		NSW RFS	FCNSW/BSC/DPL-LW	Annually, pre-fire season
	Maintain Fernmount Range Trail to Standard		BSC/DPL-LW	NSW RFS	2019-2024
	Maintain Twin Pines Road to Standard		FCNSW	NSW RFS	2019-2024
	Maintain Old Brielfield Road to Standard		BSC	NSW RFS	2019-2024
	Maintain Fernmount Fire Road to Standard		BSC	NSW RFS	2019-2024
	Maintain Residential Preparation Zones		BSC	NSW RFS	Ongoing
Ignition Management	Manage use of fire in the environment through Fire Permits, Hazard Reduction Certificates, firewood collection & camp fire restrictions	N/A	NSW RFS	FCNSW	Ongoing
Community Education	Conduct Get Ready Day to promote and facilitate survival plans using the Fernmount Survival Map	N/A	NSW RFS		2019-2024
	Install Automatic Electronic Fire Danger Rating sign on Waterfall Way	N/A	NSW RFS	BSC	2019
	Maintain Automatic Electronic Fire Danger Rating sign on Waterfall Way	N/A	NSW RFS	BSC	Ongoing
	Install Community Protection Plan Survival Map display signage	N/A	NSW RFS	BSC	2020

Is your property fire-safe?

1. Cut back any overhanging trees or shrubs and dispose of surface appropriately.
2. Check the condition of your roof and replace any damaged or missing tiles.
3. Clear leaves from the roof, gutters and downpipes and fit quality metal leaf guards.
4. Non-combustible fences are the most effective at retarding the intense heat generated by bush fire.
5. Plant trees and shrubs that are less likely to ignite due to their low oil content.
6. If you have a water tank, dam or swimming pool, consider installing a Static Water Supply sign (SWSS).
7. Enclose sub-floor areas.
8. Store wood piles well away from the house and keep covered.
9. Keep garden mulch away from the house and keep grass short.
10. Make sure the pressure relief valves on LPG cylinders face inward.
11. Ensure you have a hose which is long enough to reach every part of the home.
12. Remove and store any flammable items away from the house.
13. Install metal fly-wire or solid screens to the outside windows and doors.
14. Have a non-combustible doormat.



Is your property fire-safe ?

Zone	Purpose	Suppression Objectives	Zone Characteristics
Asset Protection Zone	To protect human life, property and highly valued public assets.	To enable the safe use of Direct Attack suppression strategies within the zone. To minimise bush fire impacts on undefendable assets.	As per RFS document Standards for Asset Protection Zones.
Strategic Fire Advantage Zone	To provide strategic areas of fire protection advantage which will reduce the speed and intensity of bush fires, and reduce the potential for spot fire development; To aid containment of bush fires to existing management boundaries.	To improve the likelihood and safe use of: Parallel Attack suppression strategies within the zone, and/or Indirect Attack (back burning) in high to very high fire weather conditions within the zone, and/or Crown fire development within the zone, and/or Spot fire ignition potential from the zone.	Zone width related to suppression objectives and dependant upon: •Topography •Aspect •Spotting propensity •Location of adjacent firebreaks •Mosaic pattern of treatment Assess Overall Fuel Hazard (OFH) once vegetation communities reach minimum fire thresholds within this plan. Management practices should aim to achieve mosaic fuel reduction patterns so that the majority of the SFAZ has an OFH of less than high.
Residential Preparation Zone	To identify that residents / property owners have a vital role to play in bush fire risk management and that they are responsible for their own property preparedness.	To increase the preparedness of residents for bush fire and ensure that residential assets is adequately maintained. To provide a defendable space for residents / fire fighters and complement hazard reduction works carried out within Asset Protection Zones / Strategic Fire Advantage Zones.	Residents / property owners should strive to achieve a 'Fire-Safe' property as outlined in the illustration above. Concerns regarding the bush fire safety of neighbouring properties should be raised with the NSW Rural Fire Service.

LEGEND

State Forest	Neighbourhood Safer Place
Approved Asset Protection Zone	Tactical Fire Trail
Approved Asset Protection Zone	Strategic Fire Trail
Residential Preparation Zone	Sealed Road
	Unsealed Road/Track

PREPARE. ACT. SURVIVE.

**BUSH FIRE INFORMATION LINE
1800 NSW RFS
1 8 0 0 6 7 9 7 3 7
www.rfs.nsw.gov.au**

EMERGENCY

PRODUCTION INFORMATION

Base Data: LPI Cadastral and Topographical Database	Print Date: October 2020
Map Projection: GCS GDA 1994	Produced by: RFS Planning and Environment Services
Scale: 1:9000	
BFMC Approved: 1 May 2019	

WARNING INFORMATION

1. This map has been prepared by the NSW Rural Fire Service ('The Service') using data supplied to it by other agencies and entities. See the 'Data Dictionary' for further information about the sources of this data.
2. The Service has not verified or checked the data used to prepare this map. The map may contain errors and omissions. The Service has not made any attempt to ground truth the map.
3. There will be a margin of error in relation to the location of features recorded on the map. The Service is unable to specify the extent or magnitude of that margin of error.
4. Significant changes may have occurred:
 - i. In the time between which the data was originally collected and the map produced; and
 - ii. Since the map was produced.
5. Users must, wherever possible, ground truth the map before relying on it or the accuracy of the map or the information recorded on the map for any purpose.
6. The Service accepts no responsibility for any injury loss or damage arising from the use of this map or any errors or omissions in the information recorded on the map.

There are four simple steps to get ready for a bush fire:



Get prepared for the Bush Fire Season and make your Bush Fire Survival Plan now. Go to www.myfireplan.com.au

