

GOOBARRAGANDRA

WORKS PROGRAM

Map Ref	Source	Strategy	Action	Responsible Agency	Target / Action Date
1	BFRMP	Community Education	Provide community fire protection and preparation advice prior to and during the bush fire danger period.	Rural Fire Service	annually & as required
2	BFRMP	Preparedness	Inspect prior to Bush Fire Danger Period.	Rural Fire Service, Snowy Valleys Council, DPI - Lands & Forestry (Crown Lands), National Parks & Wildlife Service, Private forest growers/owners, NSW Forestry Corporation	annually
3	BFRMP	Hazard Reduction	Maintain / slash Asset Protection Zone (APZ) when overall fuel hazard reaches high.	Rural Fire Service, Snowy Valleys Council, DPI - Lands & Forestry (Crown Lands), National Parks & Wildlife Service, Private forest growers/owners, NSW Forestry Corporation	annually & ongoing as required
4	BFRMP	Hazard Reduction	Manage & maintain Strategic Fire Advantage Zone including along primary access roads & fire trails. Undertake hit works along road verge.	Rural Fire Service, Snowy Valleys Council, DPI - Lands & Forestry (Crown Lands), National Parks & Wildlife Service, Private forest growers/owners, NSW Forestry Corporation	ongoing as required
5	proposed	Hazard Reduction	Maintain APZ around network assets / structures.	Transgrid, Essential Energy	annually & ongoing
6	proposed	Preparedness	Develop / maintain Bush Fire Survival Plan. Establish / maintain APZ around dwellings in Resident Preparation Area, & property fire breaks.	Private property owners	establish & maintain
7	proposed	Preparedness	Work collaboratively with local fire managers to identify and plan protection for the community and assets.	Community members and property owners	annually
8	BFRMP	Community Education	Develop Community Protection Plan (CPP).	Community, landholders & authorities led by Rural Fire Service	2018, review in +/- 5 years
9	proposed	Preparedness	Maintain APZ around Neighbourhood Safer Place.	Snowy Valleys Council, NPWS, Rural Fire Service	ongoing



Zone	Purpose	Suppression Objectives	Zone Characteristics
Asset Protection Zone	To protect human life, property and highly valued public assets and values.	To enable the safe use of Direct Attack suppression strategies within the zone. To minimise bush fire impacts on undefendable assets.	As per RFS document Standards for Asset Protection Zones.
Strategic Fire Advantage Zone	To provide strategic areas of fire protection advantage which will reduce the speed and intensity of bush fires, and reduce the potential for spot fire development. To aid containment of wildfires to existing management boundaries.	To improve the likelihood and safe use of Parallel Attack suppression strategies within the zone. To reduce the likelihood of: Indirect Attack (back burning) in high to very high fire weather conditions within the zone. To reduce the likelihood of: Crown fire development within the zone. and/or: Spot fire ignition potential from the zone.	Zone width related to suppression objectives and dependant upon: -Topography -Aspect -Spotting propensity -Location of adjacent firebreaks -Mosaic pattern of treatment -Assess Overall Fuel Hazard (OFH) once vegetation communities reach minimum fire thresholds within this plan. Management practices should aim to achieve mosaic fuel reduction patterns so that the majority of the SFAZ has an OFH of less than high.
Resident Preparation Area	To identify that residents / property owners have a vital role to play in bush fire risk management and that they are responsible for their own property preparedness.	To increase the preparedness of residents for bush fire and ensure that vegetation in close proximity to residential assets are adequately maintained. To provide a defensible space for residents / fire fighters and complement hazard reduction works carried out within Asset Protection Zones / Strategic Fire Advantage Zones.	Residents / property owners should strive to achieve a 'Fire-Safe' property as outlined in the illustration above. Concerns regarding the bush fire safety of neighbouring properties should be raised with the NSW Rural Fire Service.

LEGEND

	Asset Protection Zone		Neighbourhood Safer Place
	Proposed Asset Protection Zone		Residential Preparation Area
	Strategic Fire Advantage Zone		Proposed Hazard Reduction
	Proposed Strategic Fire Advantage Zone		Fire Trail

PREPARE. ACT. SURVIVE.

BUSH FIRE INFORMATION LINE
1800 NSW RFS
 1 8 0 0 6 7 9 7 3 7

www.rfs.nsw.gov.au

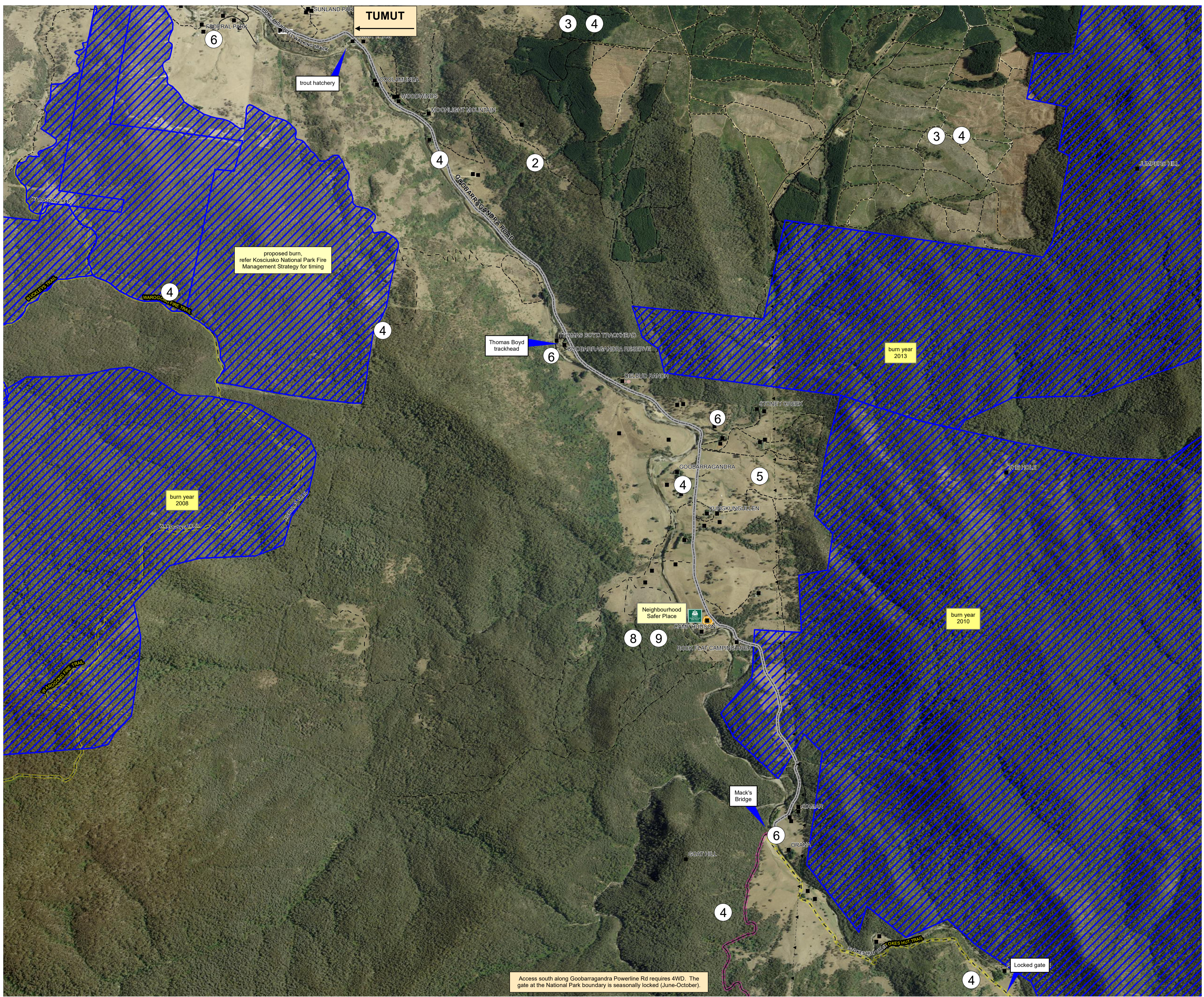
PRODUCTION INFORMATION

Base Data: LPMa Cadastre and Topo Database
 Map Projection: GCS GDA 1994
 Print Date / Time: 02/11/2018, 1630 Hrs
 Produced by: RFS, A Nicholls, PES-South

BMFC Approved: 17/10/2018, Snowy Valleys

WARNING INFORMATION

- This map has been prepared by the NSW Rural Fire Service ("The Service") using data supplied to it by other agencies and entities. See the "Data Dictionary" for further information about the sources of this data.
- The Service has not verified or checked the data used to prepare this map. The map may contain errors and omissions. The Service has not made any attempt to ground truth the map.
- There will be a margin of error in relation to the location of features recorded on the map. The Service is unable to specify the extent or magnitude of that margin of error.
- Significant changes may have occurred;
 - In the time between which the data was originally collected and the map produced; and
 - Since the map was produced.
- Users must, wherever possible, ground truth the map before relying on it or the accuracy of the map or the information recorded on the map for any purpose.
- The Service accepts no responsibility for any injury loss or damage arising from the use of this map or any errors or omissions in the information recorded on the map.



Have you prepared your Bush Fire Survival Plan?

Download a copy of the Bush Fire Survival Plan from www.rfs.nsw.gov.au