

Northern Tablelands Bush Fire Management Committee

**Northern Tablelands Bush Fire
Management Committee**

**Bush Fire Risk Management Plan
2020**

Table of Contents

Glossary	6
Chapter 1. Introduction	7
1.1 Background	7
1.2 Aim and Objectives	7
1.3 Description of the Northern Tablelands BFMC Area	8
1.3.1 Location and land tenure	8
1.3.2 Climate and bush fire season	8
1.3.3 Population and demographic information	8
1.3.4 History of bush fire frequency and ignition cause	8
Chapter 2. Identifying and Assessing the Bush Fire Risk	9
2.1 Process	9
2.2 Communication and Consultation	9
2.3 Identifying the Bush Fire Risk	10
2.3.1 Assets	10
2.3.2 Assessing the Bush Fire Risk - Consequence	11
2.3.3 Assessing the Bush Fire Risk - Likelihood	11
2.3.4 Identifying the level of risk	12
2.3.5 Evaluating the Bush Fire Risk	12
2.3.6 Prioritising Treatments	12
2.3.7 Risk Acceptability	12
Chapter 3. Treating the Risk	13
3.1 Bush Fire Management Zones	13
3.2 BFMC Wide Treatments	14
3.3 Asset Specific Treatments	16
3.4 Fire Thresholds	17
3.5 Annual Works Programs	18
3.6 Implementation	18
3.7 Local permit issuing/hazard reduction burning exclusion periods	18
Chapter 4. Performance Monitoring and Reviewing	19
4.1 Review	19
4.2 Monitoring	19
4.3 Reporting	19
4.4 Performance Measurements	19
Appendix 1 Community Participation Strategy	20
Appendix 2 Asset Register	22
Appendix 3 Treatment Register	31
Appendix 4 Maps	44

List of Tables

<i>Table 1.1 Land Tenure</i>	8
<i>Table 3.1 Bush Fire Management Zones: Purpose, objectives and characteristics</i>	13
<i>Table 3.2 Asset specific treatments used in the Northern Tablelands BFMC area</i>	16
<i>Table 3.3 Fire Thresholds for Vegetation Categories</i>	17

List of Figures

<i>Figure 2.1 Overview of the risk assessment process</i>	9
---	---

Authorisation

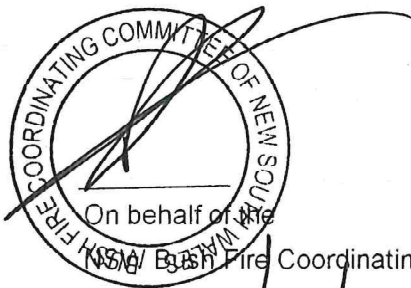
In accordance with Part 3 Division 4 of the Rural Fires Act 1997, this Draft Plan has been prepared by the Northern Tablelands Bush Fire Management Committee and has been endorsed at the BFMC meeting on 20 January 2021 for submission to the Bush Fire Coordinating Committee.

Recommended



Brian McDonough
Chairperson
Northern Tablelands Bush Fire Management Committee

Approved



18/10/21

Amendment List

Amendment		Entered	
Number	Date	Signature	Date

Glossary

Assets: anything valued by the community which includes houses, crops, heritage buildings and places, infrastructure, the environment, businesses, and forests, that may be at risk from bush fire.

Bush Fire: a general term used to describe fire in vegetation, includes grass fire.

Bush Fire Hazard: the potential severity of a bush fire, which is determined by fuel load, fuel arrangement and topography under a given climatic condition.

Bush Fire Risk: the chance of a bush fire igniting, spreading and causing damage to the community or the assets they value.

Bush Fire Risk Management: a systematic process that provides a range of treatments which contribute to the wellbeing of communities and the environment, which suffer the adverse effects of wildfire/bush fire.

Bush Fire Threat: potential bush fire exposure of an asset due to the proximity and type of a hazard and the slope on which the hazard is situated.

Consequence: outcome or impact of a bush fire event.

Fire Fighting Authorities: the NSW Rural Fire Service, NSW Fire Brigades, the National Parks and Wildlife Service and Forests NSW.

Likelihood: the chance of a bush fire igniting and spreading.

Major Bush Fire: A bush fire which requires the attendance of multiple brigades, or causes damage to property or injury to one or more persons.

Display area: geographic area determined by the Bush Fire Management Committee which is used to provide a suitable area and scale for community participation and mapping display purposes.

Recovery costs: the capacity of an asset to recover from the impacts of a bush fire.

Risk Acceptance: an informed decision to accept the consequences and the likelihood of a particular risk.

Risk Analysis: a systematic process to understand the nature of and to deduce the level of risk.

Risk Assessment: the overall process of risk identification, risk analysis and risk evaluation.

Risk Identification: the process of determining what, where, when, why, and how something could happen.

Risk Treatment: the process of selection and implementation of measures to modify risk.

Vulnerability: the susceptibility of an asset to the impacts of bush fire.

Chapter 1. Introduction

1.1 Background

Under the Rural Fires Act 1997 the Bush Fire Coordinating Committee (BFCC) must constitute a Bush Fire Management Committee (BFMC) for each area in the State, which is subject to the risk of bush fires. Each BFMC is required to prepare and submit to the BFCC a draft Bush Fire Risk Management Plan (BFRMP).

A BFRMP is a strategic document that identifies community assets at risk and sets out a five-year program of coordinated multi-agency treatments to reduce the risk of bush fire to the assets. Treatments may include such things as hazard reduction burning, grazing, community education, fire trail maintenance and establishing community fireguard groups.

Annual programs to implement the treatments identified in this plan will be undertaken by the relevant land managers and firefighting authorities.

In exercising its functions under the Rural Fires Act 1997, including the preparation of a draft bush fire risk management plan, the Northern Tablelands BFMC is required to have regard to the principles of ecologically sustainable development (ESD).

This document and the accompanying maps together form the BFRMP for the Northern Tablelands BFMC area.

This BFRMP has been prepared by the Northern Tablelands BFMC and covers both public and private lands. This BFRMP must be reviewed and updated within each successive five-year period from the constitution of the BFMC.

The BFCC recognises that climate change has the potential to increase bush fire risk. The risk assessment process applied in this BFRMP is based on current climatic conditions. The BFCC will monitor information on climate change and will modify the process when necessary.

1.2 Aim and Objectives

The **aim** of this BFRMP is to minimise the risk of adverse impact of bush fires on life, property and the environment.

The **objectives** of this BFRMP are to:

- reduce the number of human-induced bush fire ignitions that cause damage to life, property and the environment;
- manage fuel to reduce the rate of spread and intensity of bush fires, while minimising environmental/ecological impacts;
- reduce the community's vulnerability to bush fires by improving its preparedness; and
- effectively contain fires with a potential to cause damage to life, property and the environment.

1.3 Description of the Northern Tablelands BFMC Area

1.3.1 Location and land tenure

The Northern Tablelands BFMC area is located in Northern NSW New South Wales and includes the Local Government Areas of Glen Innes-Severn, Inverell and Tenterfield.

The area covered by the Northern Tablelands BFMC is 2,142,500 hectares and includes the land tenures outlined in Table 1.1.

Land Manager	% of BFMC area
National Parks & Wildlife Service	9.53
Forests NSW	9.13
Department of Lands	0.79
Local Government	0.93
Private	79.49
All other	0.13

Table 1.1 Land Tenure

1.3.2 Climate and bush fire season

The typical/average climate in the Northern Tablelands BFMC area is consistent with a Temperate Zone (warm summer, cool winter). As the name implies, most people find this climate acceptable at any time of year. Autumn and spring are the most comfortable seasons in most parts. The weather is more changeable than in the tropics, with cool cloudy days alternating with warmth and sunshine. Rain falls occasionally but doesn't usually last very long and the bush fire season generally runs from August to March annually.

Prevailing weather conditions associated with the bush fire season in the Northern Tablelands BFMC area are north-westerly winds accompanied by high daytime temperatures and low relative humidity. Dry lightning storms occur frequently during the bush fire season.

1.3.3 Population and demographic information

The population of the Northern Tablelands BFMC area is approximately 34,200 people. The major population centres are Glen Innes, Inverell and Tenterfield.

The following issue has been identified within the Northern Tablelands BFMC area as potentially impacting on the ability of certain sections of the community to prepare for bush fire: a large number of absentee landowners with property, mostly small holdings, and "Weekender" type dwellings. Some of these properties are only visited by the owners on an annual basis with no Hazard Reduction works being done between visits. These "Weekenders" are generally located in high fire danger areas in Glen Innes and Tenterfield Shires.

1.3.4 History of bush fire frequency and ignition cause

The Northern Tablelands BFMC area has on average 170 bush fires per year, of which five on average can be considered to be major fires.

The main sources of ignition in the Northern Tablelands BFMC area are:

- Escaped private burns;
- Lightning; and
- Machinery.

Chapter 2. Identifying and Assessing the Bush Fire Risk

2.1 Process

The Australia/New Zealand Standard *AS/NZS 4360: 2004 Risk Management* was used as the basis for the risk assessment process. See Figure 2.1 for the steps involved. For a detailed description of the process undertaken see the Bush Fire Risk Management Planning Guidelines for Bush Fire Management Committees on the RFS website: www.rfs.nsw.gov.au.

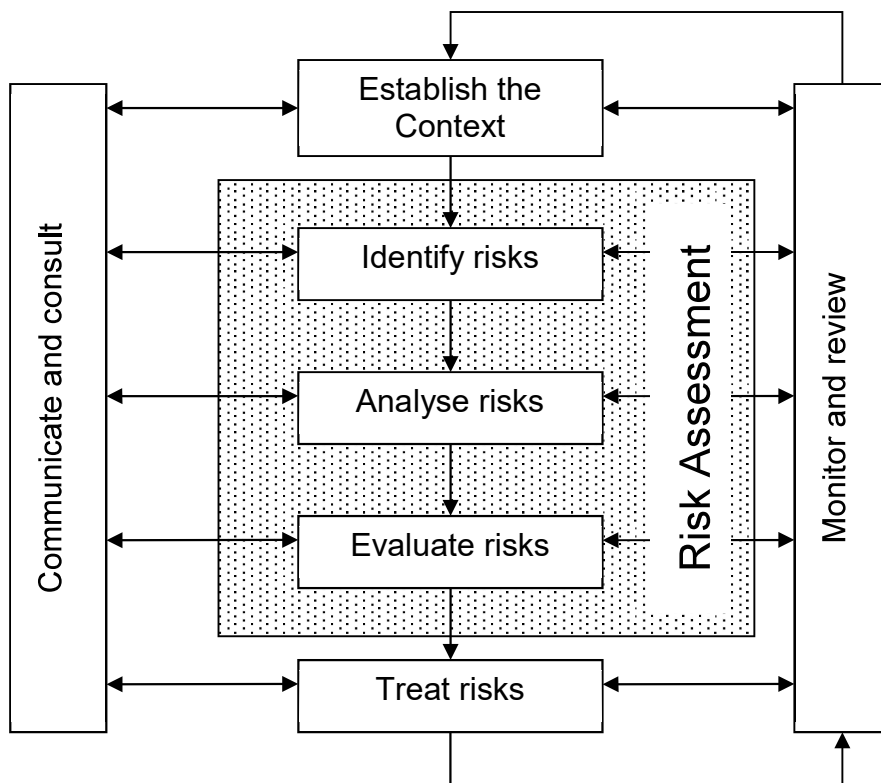


Figure 2.1 Overview of the risk assessment process

2.2 Communication and Consultation

Community participation is an integral part of risk management. The Community Participation Strategy involved developing and implementing a process to address the needs, issues and concerns of stakeholders within the BFMC area in regards to the BFRMP. See Appendix 1 for the Community Participation Strategy used by the Northern Tablelands BFMC in preparing this BFRMP.

2.3 Identifying the Bush Fire Risk

Identifying the level of bush fire risk firstly involved identifying important community assets considered to be at risk from bush fire in the Northern Tablelands BFMC area, and then assessing the likelihood and consequence ratings.

2.3.1 Assets

BFMC members and the community, including RFS volunteers, identified assets within the Northern Tablelands BFMC that they believed were at risk of bush fire.

The assets were divided into four asset types:

Human settlement

- Residential areas including urban bushland interface areas and rural properties;
- Special Fire Protection areas including schools, hospitals, nursing homes, and tourist facilities;
- Other human settlement areas including commercial and industrial areas where distinct from major towns; and
- Neighbourhood Safer Place (NSP) is defined by the *Rural Fires Act 1997* as *land or a building designated as a neighbourhood safer place under section 62C*. NSPs provide a place of last resort for people during a bush fire. All designated NSP locations for NSW are available at www.rfs.nsw.gov.au.

Economic

- Agricultural; e.g. major silos, regional saleyards, cropping/grazing land;
- Commercial/industrial e.g. major industries, waste treatment plants, sawmills;
- Infrastructure e.g. large power lines, gas and oil pipelines, railway lines, electricity substations, communication facilities;
- Tourist and recreational e.g. tourist sites and facilities, resorts, retreats;
- Mines;
- Commercial forests e.g. pine plantations, eucalypt plantations and commercial native forests; and
- Drinking water catchments.

Environmental

- Threatened species, populations and ecological communities and Ramsar wetlands;
- Locally important species and ecological communities, such as species and ecological communities especially sensitive to fire.

Cultural

- Aboriginal significance – Aboriginal places and items of significance;
- Non-indigenous heritage – places and items arising from the early occupation of NSW by European or other non-indigenous settlers; and
- Other cultural assets – community halls, clubs and recreational facilities.

See Appendix 2 for the full list of assets identified in the Northern Tablelands BFMC area. See maps 1 - 3 for the location of assets to be treated under this BFRMP.

2.3.2 Assessing the Bush Fire Risk - Consequence

Once the assets were identified, the consequence of a bush fire impacting on these assets was assessed.

See Appendix 2 for the consequence ratings assigned to each asset identified in the Northern Tablelands BFMC area.

The different asset types had different assessment processes used to determine the consequence. These processes are identified below.

Human settlement

A potential fire behaviour model using vegetation type, slope and separation distance was used to produce a threat rating for human settlement assets. The vulnerability of the asset to a bush fire was also assessed and a rating assigned. These ratings were then used to assess the consequence of a bush fire impacting upon a human settlement asset.

Special Fire Protection (SFP) assets were considered inherently more vulnerable to bush fire due to mobility capacity, knowledge or other issues relating to their inhabitants, (e.g. the elderly, infirm, children or tourists) and therefore stricter requirements for vulnerability assessment and rating were applied.

Economic

The level of economic impact e.g. local, regional or state, as well as the economic recovery costs (how long and complicated a financial recovery will be) of the asset were identified. These ratings were used to assess the consequence of a bush fire impacting upon an economic asset.

Environmental

Environmental assets with known minimum fire threshold were assessed to determine if they were at risk of a bush fire within the 5 year life of the BFRMP using fire history data. Those environmental assets which were within or above the fire threshold were not assessed in the BFRMP, as the negative impact of a fire within the 5 year period was determined as being low and may even be of benefit to the asset and surrounding habitat.

The vulnerability of an environmental asset was determined by its conservation status and its geographic extent (distribution across the landscape). Vulnerability and potential impact of bush fire were used to assess the consequence of a bush fire impacting upon an environmental asset.

Several Endangered Ecological Communities were identified as occurring within the Northern Tablelands BFMC area; however these have not been mapped and assessed due to a lack of sufficient spatial information. Land managers need to take this into consideration before undertaking approved hazard reduction activities.

Cultural

For non-indigenous historical, Aboriginal and other cultural assets a potential fire behaviour model using fuel load, slope and proximity was used to produce a threat rating. The physical vulnerability of the asset to a bush fire was also assessed. These ratings were then used to assess the consequence of a bush fire impacting upon a cultural asset.

2.3.3 Assessing the Bush Fire Risk - Likelihood

For all asset types the likelihood of a bush fire occurring was assessed. This involves considering fire history, including ignition cause and patterns, known fire paths, access, containment potential and potential fire run (size of the vegetated area). See Appendix 2 for

the likelihood ratings assigned to each asset identified in the Northern Tablelands BFMC area.

2.3.4 Identifying the level of risk

The consequence and likelihood ratings were then used to identify the level of risk. See Appendix 2 for the risk ratings assigned to each asset identified in the Northern Tablelands BFMC area.

2.3.5 Evaluating the Bush Fire Risk

Once the risk ratings for each asset were identified, they were evaluated to:

- a) confirm that risk levels identified in the risk analysis process are appropriate and reflect the relative seriousness of the bush fire risk;
- b) identify which assets require treatments; and
- c) identify treatment priorities.

2.3.6 Prioritising Treatments

No organisation has limitless resources to deal with adverse risk. It is therefore necessary to define priorities. The bush fire risk ratings determined were used to prioritise the risk treatments, i.e. areas of extreme risk were considered first for treatment, then very high, then high then medium then low. It was also necessary to prioritise within the risk levels i.e. determining which of the high risks was the most serious. This was done on the basis of the consequence and likelihood ratings.

2.3.7 Risk Acceptability

Risks below a certain level were assessed as not requiring treatment within the life of this plan. This is due to a combination of risk priority and capacity to undertake the works. Within the Northern Tablelands BFMC area the level of acceptability is high. Areas of high, medium or low risk are likely to be managed by routine procedures and so do not require a specific application of resources.

All NSPs for a BFMC area will require ongoing treatment by the applicable land owner to ensure that the asset remains viable as a place of last resort for people during a bush fire. Therefore, all NSP assets are allocated specific treatments in this Plan, regardless of the level of bush fire risk identified and the risk acceptability nominated by the Northern Tablelands BFMC.

Chapter 3. Treating the Risk

3.1 Bush Fire Management Zones

Bush Fire Management Zones were identified within the Northern Tablelands BFMC area and mapped (see maps 1 - 3). These zones identify the fire management intent for a specific area. See Table 3.1 for descriptions of the zones and their purposes. The four categories of Bush Fire Management Zones are:

- Asset Protection Zone (APZ);
- Strategic Fire Advantage Zone (SFAZ);
- Land Management Zone (LMZ); and
- Fire Exclusion Zone (FEZ).

Some of these zones (usually Land Management Zones) may be further classified within this category by the land manager, e.g. LMZ -Heritage Management Zone (NPWS).

Zone	Purpose	Suppression Objective(s)	Zone characteristics
Asset Protection Zone	To protect human life, property and highly valued public assets and values.	To enable the safe use of Direct Attack suppression strategies within the zone. To minimise bush fire impacts on undefended assets.	As per RFS document <i>Standards for Asset Protection Zones</i> .
Strategic Fire Advantage Zone	To provide strategic areas of fire protection advantage which will reduce the speed and intensity of bush fires, and reduce the potential for spot fire development; To aid containment of wildfires to existing management boundaries.	To improve the likelihood and safe use of: Parallel Attack suppression strategies within the zone. and/or Indirect Attack (back burning) in high to very high fire weather conditions within the zone. To reduce the likelihood of: Crown fire development within the zone. and/or Spot fire ignition potential from the zone.	Zone width related to suppression objectives and dependent upon: <ul style="list-style-type: none"> • Topography • Aspect • Spotting propensity • Location of adjacent firebreaks • Mosaic pattern of treatment Assess Overall Fuel Hazard (OFH) once vegetation communities reach minimum fire thresholds within this plan. Management practices should aim to achieve mosaic fuel reduction patterns so that the majority of the SFAZ has an OFH of less than high.
Land Management Zone	To meet relevant land management objectives in areas where APZs or SFAZs are not appropriate.	As per the land management and fire protection objectives of the responsible land management agency. To reduce the likelihood of spread of fires. To undertake mosaic burning	As appropriate to achieve land management e.g. heritage and/or fire protection e.g. broad scale mosaic burning objectives.
Fire Exclusion Zone	To exclude bush fires.	N/A	Variable dependant on size of fire sensitive area requiring protection.

Table 3.1 Bush Fire Management Zones: Purpose, objectives and characteristics

NB: OFH refers the Overall Fuel Hazard Guide as described in the document published by (Dept. of Sustainability and Environment 3rd ed. 1999 & NPWS version); State-wide procedures for assessment of fuel hazard will be developed in conjunction with the BFCC.

Note: All areas that are not mapped or described as APZs or SFAZs are considered as LMZs.

For the purpose of the Bush Fire Environmental Assessment Code:

1. Plantations that are approved under the *Plantations & Reafforestation Act 1999* after closure of the public exhibition period for this BFRMP are considered to be identified in this BFRMP; and
2. Retained vegetation within the aforementioned plantations is considered to be a Strategic Fire Advantage Zone identified in the text of this BFRMP as long as it meets the suppression objectives for SFAZs included in the BFRMP, and is not mapped or otherwise described as a Fire Exclusion Zone in the BFRMP.

3.2 BFMC Wide Treatments

BFMC wide treatments are activities which reduce the overall bush fire risk within the BFMC area and are undertaken on an ongoing basis as part of normal business. These treatments are not linked to specific assets in the BFRMP, rather they are applied across all or part of the BFMC area as designated by legislation or agency policy. BFMC wide treatments include the following:

- **Reviewing the bush fire prone land map**

These maps identify bush fire prone land and are used to trigger whether a development application is assessed using *Planning for Bush Fire Protection*¹.

- **Ensuring developments in bush fire prone land comply with *Planning for Bush Fire Protection***

This assessment process requires new applications for development to include bush fire protection measures.

- **Using the Local Environment Plan/s (LEPs) to control developments in areas with a bush fire risk**

LEPs can be used to exclude development in extreme bush fire risk areas or where bush fire protection measures cannot be incorporated.

- **Varying the standard bush fire danger period as required**

In years where the weather is particularly adverse the bush fire danger period may be brought in early or extended. This is assessed every year by the BFMC.

- **Requiring permits during the bush fire danger period**

In the bush fire danger period a fire safety permit is required to light a fire in the open. Permits specify conditions such as firefighting equipment that must be on site, or restrict burns based on weather conditions.

- **Prosecution of arsonists/offenders**

Under the *Rural Fires Act 1997* persons may be prosecuted for breaching the conditions on a fire permit, lighting a fire during a Total Fire Ban, allowing fire to escape their property, or other breaches of the Act.

¹ NSW Rural Fire Service 2006 *Planning for Bush Fire Protection: A guide for councils, planners, fire authorities and developers.*

- **Investigation of bush fire cause**

All bush fires which do not have a known cause are investigated to identify how they started.

- **Normal fire suppression activities**

Responding to bush fire is a normal business activity for the firefighting authorities.

- **Assessing and managing compliance with strategic firefighting resource allocation provisions**

Strategic firefighting resource allocation provisions is the process used to identify the number of stations, brigades and appliances required in an area, and considers members, training, assets and hazards.

- **Preparation of a S52 Operations Coordination Plan**

The Operations Coordination Plan is prepared biannually and sets out how coordinated firefighting will occur. It includes specific operational restrictions on firefighting techniques in certain areas, where fires will be managed from, and how agencies involved can communicate during operations.

- **Fire Management Plans or Plans of Management**

Some land management agencies have developed fire management plans or plans of management with specific fire or fuel management strategies, for example a Forests NSW Regional Fuel Management Risk Plan, a NPWS Fire Management Strategy. These publicly exhibited plans form the basis for operational fire planning on public parks, reserves and forests.

- **Bush Fire Hazard Complaints**

If someone is concerned about possible bush fire hazards on a neighbouring property or any other land, then this can be reported to the RFS Commissioner or their local RFS Fire Control Centre. The complaint will be investigated and may result in a notice being issued to the landowner or manager to reduce the hazard.

3.3 Asset Specific Treatments

There are five broad strategy groups available to treat the bush fire risk to assets identified in the BFRMP.

The types of asset specific treatments in each strategy group used in the Northern Tablelands BFMC area are listed below. A full list of the treatment strategies in the Northern Tablelands BFMC area are in Appendix 2.

Strategy	Targeted treatments used in the Northern Tablelands BFMC area
Hazard Reduction	To reduce the amount of available fuels using mechanical means or prescribed burning.
Community Education	To provide the community with information to make informed decisions.
Property Planning	Use of Bush Fire Prone Land Map to determine developments requiring assessment under <i>Planning for Bush Fire Protection</i> .
Preparedness	Preparation of management and operations plans.
Other	Treatments for Commonwealth Land.

Table 3.2 Asset specific treatments used in the Northern Tablelands BFMC area

3.4 Fire Thresholds

The vegetation in the Northern Tablelands BFMC area was classified into fire threshold categories (Table 3.3).

Vegetation formation	Minimum SFAZ Threshold	Minimum LMZ Threshold	Maximum Threshold	Notes
Rainforest	NA	NA	NA	Fire should be avoided.
Alpine complex	NA	NA	NA	Fire should be avoided.
Wet Sclerophyll forest (shrubby subformation)	25	30	60	Crown fires should be avoided in the lower end of the interval range.
Wet Sclerophyll forest (grassy subformation)	10	15	50	Crown fires should be avoided in the lower end of the interval range.
Grassy woodland	5	8	40	Minimum interval of 10 years should apply in the southern Tablelands area. Occasional intervals greater than 15 years may be desirable.
Grassland	2	3	10	Occasional intervals greater than 7 years should be included in coastal areas. There was insufficient data to give a maximum interval; available evidence indicates maximum intervals should be approximately 10 years.
Dry sclerophyll forest (shrub/grass subformation)	5	8	50	Occasional intervals greater than 25 years may be desirable.
Dry sclerophyll forest (shrub subformation)	7	10	30	Occasional intervals greater than 25 years may be desirable.
Heathlands	7	10	30	Occasional intervals greater than 20 years may be desirable.
Freshwater wetlands	6	10	35	Occasional intervals greater than 30 years may be desirable.
Forested wetlands	7	10	35	Some intervals greater than 20 years may be desirable.
Saline wetlands	NA	NA	NA	Fire should be avoided.
Semi-arid woodlands (grassy subformation)	6	9	No max	Not enough data for a maximum fire interval.
Semi-arid woodlands (shrubby subformation)	10	15	No Max	Not enough data for a maximum fire interval.
Arid shrublands (chenopod subformation)	NA	NA	NA	Fire should be avoided.
Arid shrublands (acacia subformation)	10	15	No Max	Not enough data for a maximum fire interval.

Table 3.3 Fire Thresholds for Vegetation Categories

3.5 Annual Works Programs

The land management agencies and firefighting authorities responsible for implementing the treatments identified in this plan will include those treatments in their annual works programs detailing how, when, and where the required activities will be undertaken.

3.6 Implementation

When the treatments identified in this BFRMP are implemented there are a number of issues that need to be considered by the responsible agency including environmental assessments and approvals, smoke management and prescribed burn plans.

3.7 Local permit issuing/hazard reduction burning exclusion periods

In the Northern Tablelands BFMC area the issuing of permits/hazard reduction burning is not permitted during the week/weeks covering the Christmas/New Year period.

This would normally be from the Monday prior to Christmas until the Monday following New Year but dependant on when the holidays occur. The reason for this BFMC Approved strategy is due to the reduced number of fire fighters available during this period of the year.

Chapter 4. Performance Monitoring and Reviewing

4.1 Review

This BFRMP must be reviewed and updated within each successive five-year period from the constitution of the BFMC. The Northern Tablelands BFMC will also review this plan as necessary to account for any changes in context or risk. This may be triggered by a range of circumstances, including but not limited to:

- changes to the BFMC area, organisational responsibilities or legislation;
- changes to the bush fire risk in the area; or
- following a major fire event.

4.2 Monitoring

The BFMC is required to monitor progress towards the completion of treatment works listed in the BFRMP, and the timeliness of the works.

4.3 Reporting

The BFMC is required to report annually to the BFCC on its progress in implementing the bush fire risk management activities identified in this plan.

4.4 Performance Measurements

State wide performance measurements which are linked to the BFRMP have been identified by the BFCC. All BFMCs must use these to monitor and report on their success in reducing the bush fire risk in their BFMC area.

Appendix 1 Community Participation Strategy

Date	Target Audience	Method of communication	Method of notification	Key messages/ purpose	Resources required	Responsibility
28-29 February, 1 March 2020	General Public (Inverell Show)	Public display	Local paper, and social media	<ul style="list-style-type: none"> • Introduce BFRMPs • Community issues • Identify assets • Asset assessments • Discuss treatment options • Community responsibilities 	<ul style="list-style-type: none"> • Venue • Static • Maps • Contact details for more info/submissions 	RFS, LGA
12-13 Feb 2020	General public (Tenterfield Show)	Public display	Local paper, and social media	<ul style="list-style-type: none"> • Introduce BFRMPs • Community issues • Identify assets • Asset assessments • Discuss treatment options • Community responsibilities 	<ul style="list-style-type: none"> • Venue • Static • Maps • Contact details for more info/submissions 	RFS, LGA
7 May 2020	BFRMP Sub Committee Meeting	On line meeting	Email	<ul style="list-style-type: none"> • Gather data on assets and treatments with all agencies. 	<ul style="list-style-type: none"> • Skype connectivity • PowerPoint presentation 	BFMC Executive Officer
May June July August 2020	RFS Brigades	AGMs	Various	<ul style="list-style-type: none"> • Introduce BFRMPs • Community issues • Identify assets • Asset assessments • Discuss treatment options • Community responsibilities 	<ul style="list-style-type: none"> • Maps • Contact details for more info/submissions 	RFS
May June July August 2020	BFRMP Sub Committee Meeting	Email	Email	<ul style="list-style-type: none"> • Updated assets in BFRMP 	<ul style="list-style-type: none"> • Email 	BFMC Members
8 Sept 2020	BFMC Meeting	Meeting	Email	<ul style="list-style-type: none"> • Finalise assets and treatments 	<ul style="list-style-type: none"> • Venue • Static • Maps • Contact details for 	BFMC Members

Date	Target Audience	Method of communication	Method of notification	Key messages/ purpose	Resources required	Responsibility
19 September 2020	Captains and Field Officers Meetings	Discussion	Agenda	<ul style="list-style-type: none"> • Introduce BFRMP's • Community issues • Identify assets • Asset assessments • Discuss likelihood/consequence • Discuss treatment options • Community responsibilities 	<ul style="list-style-type: none"> • Venue • Powerpoint presentation • Maps • Facilitators 	RFS
2020	Senior Management Team Meetings	Discussion	Agenda	<ul style="list-style-type: none"> • Introduce BFRMPs • Community issues • Identify assets • Asset assessments • Discuss likelihood/consequence • Discuss treatment options • Community responsibilities 	<ul style="list-style-type: none"> • Venue • Powerpoint presentation • Maps • Facilitators 	RFS
19 September 2020	RFS Field Officers Meeting	Presentation	Agenda	<ul style="list-style-type: none"> • Discussion on asset identification and treatments 	<ul style="list-style-type: none"> • Presentation • Discussion 	RFS
September-October 2020	Media release / Public Information	All council foyers, RFS FCC's, NPWS offices static display	Media release, local papers, Social Media	<ul style="list-style-type: none"> • Introduce BFRMPs • Community issues • Identify assets • Asset assessments • Discuss treatment options • Community responsibilities 	<ul style="list-style-type: none"> • Funding • Maps • Venues 	RFS

Appendix 2 Asset Register

Map Ref No	Asset type	Asset sub type	Asset name	Asset Location	LGA	Likelihood	Consequence	Risk	Priority	Treatment number
1	Human Settlement	Residential	Dwellings on Long Gully Rd	Drake	Tenterfield	Almost certain	Catastrophic	Extreme	1A	1,2;9,11
2	Human Settlement	Residential	Dwellings on Mud Flat Rd	Drake	Tenterfield	Almost certain	Catastrophic	Extreme	1A	1,2;9
3	Human Settlement	Residential	Dwellings on Leslie Creek Rd	Drake	Tenterfield	Almost certain	Catastrophic	Extreme	1A	1,2;9
4	Human Settlement	Residential	Dwellings on Old Bruxner Rd	Drake	Tenterfield	Almost certain	Catastrophic	Extreme	1A	1;12
5	Human Settlement	Residential	Dwellings on Sugar Bag Rd	Drake	Tenterfield	Almost certain	Catastrophic	Extreme	1A	1,2;9
6	Human Settlement	Residential	Dwellings on Aqua Park Rd	Mt Mitchell	Glen Innes Severn	Almost certain	Catastrophic	Extreme	1A	13;1
7	Human Settlement	Residential	Dwellings on Bruxner Highway	Drake	Tenterfield	Almost certain	Catastrophic	Extreme	1A	1;3
8	Human Settlement	Residential	Isolated Dwellings, Rivertree Rd	Rivertree Rd	Tenterfield	Almost certain	Catastrophic	Extreme	1A	5;8,4
9	Human Settlement	Residential	Kangawalla	Shannonvale	Glen Innes Severn	Almost certain	Catastrophic	Extreme	1A	6
10	Cultural	Non Indigenous	WW2 Tank Traps	Mt Lindsay Rd	Tenterfield	Almost certain	Catastrophic	Extreme	1A	7;10
11	Human Settlement	Other	Copeton Dam Camping Area	Howell Road Tingha	Inverell	Almost certain	Catastrophic	Extreme	1A	1;15
12	Human Settlement	Other	Evacuation Route Wyaliba	Old Grafton Road Diehard	Glen Innes Severn	Almost certain	Catastrophic	Extreme	1A	14
13	Human Settlement	Residential	Dwellings on Pateman Rd	Drake	Tenterfield	Likely	Catastrophic	Extreme	1B	1;9
14	Human Settlement	Residential	Dwellings in Sunset Estate area	Dundee	Glen Innes Severn	Likely	Catastrophic	Extreme	1B	3;1,7
15	Human Settlement	Other	Kwiambal Houses and Workshop	McIntyre Falls Road, Kwiambal NP	Inverell	Likely	Catastrophic	Extreme	1B	16
16	Human Settlement	Residential	Isolated Dwelling, Butler Mine Rd	Butler Mine Road	Tenterfield	Likely	Catastrophic	Extreme	1B	18;16;8;1
17	Human Settlement	Residential	Isolated Dwelling, Currs Rd	Currs Rd, Bolivia	Tenterfield	Likely	Catastrophic	Extreme	1B	24;16
18	Human Settlement	Residential	Wyaliba Multiple Occupancy	Wyaliba, Diehard	Glen Innes Severn	Likely	Catastrophic	Extreme	1B	16;26;1;28;5;25
19	Human Settlement	Residential	Currawinya Multiple Occupancy	Paddys Flat Road, Paddys Flat	Tenterfield	Likely	Catastrophic	Extreme	1B	20;19;31;30
20	Human Settlement	Residential	Isolated Dwellings, Monterey Lane	Monterey Lane, Copeton Dam	Inverell	Likely	Catastrophic	Extreme	1B	23;27;32
21	Human Settlement	Residential	Old Mill Village	Stannifer Road, Old Mill	Inverell	Likely	Catastrophic	Extreme	1B	23;21;29;32;33
22	Cultural	Other	Old Girard Fire Shed	Tower Fire Trail, Drake	Tenterfield	Likely	Catastrophic	Extreme	1B	25
23	Cultural	Other	Red Rock Mine Buildings	Sandy Hills, Tenterfield	Tenterfield	Likely	Catastrophic	Extreme	1B	25
24	Human Settlement	Residential	Dwellings on Carrot Farm Rd	Dundee	Glen Innes Severn	Likely	Catastrophic	Extreme	1B	22;28
25	Human Settlement	Residential	Dwellings in Rummery Hill area	Reddestone	Glen Innes Severn	Likely	Catastrophic	Extreme	1B	22;17;20;8
26	Cultural	Other	Cypress Logging Buildings	Holdfast Rd, Dthinnia Dthinnaiwan NP	Inverell	Likely	Catastrophic	Extreme	1B	16

Appendix 2 Asset Register

Map Ref No	Asset type	Asset sub type	Asset name	Asset Location	LGA	Likelihood	Consequence	Risk	Priority	Treatment number
27	Cultural	Other	Arakoola Shearing Shed	Arakoola Nature Reserve	Inverell	Likely	Catastrophic	Extreme	1B	16
28	Human Settlement	Residential	Stannifer Village	Stannifer, Inverell	Inverell	Likely	Catastrophic	Extreme	1B	29
29	Human Settlement	Other	Merrigall House	Maryland NP	Tenterfield	Almost certain	Major	Extreme	1C	16
30	Human Settlement	Residential	Dwellings on Ponds Road	Ponds Road Gilgai	Inverell	Almost certain	Major	Extreme	1C	23;32;39
31	Human Settlement	Residential	Isolated Dwellings Paddys Flat Rd	Paddys Flat	Tenterfield	Almost certain	Major	Extreme	1C	4;3
32	Human Settlement	Residential	Dwellings on Old Stannifer Rd	Gilgai	Inverell	Almost certain	Major	Extreme	1C	23;36;34
33	Human Settlement	Residential	Isolated Dwellings Rocky River	Rocky River	Tenterfield	Almost certain	Major	Extreme	1C	25;35;2
34	Human Settlement	Residential	Isolated Dwellings Gulf Rd	Emmaville	Glen Innes Severn	Almost certain	Major	Extreme	1C	22;28
35	Economic	Commercial Forest	Mt Topper Plantation	Mount Toppper	Inverell	Almost certain	Major	Extreme	1C	25
36	Economic	Commercial	Mount Topper Plantation	Tingha	Inverell	Almost certain	Major	Extreme	1C	37
37	Human Settlement	Residential	Tingha Village	Tingha Village	Inverell	Almost certain	Major	Extreme	1C	4;38
0	Human Settlement	Residential	Dwellings on Blue Hills Road	Blue Hills Road Glen Innes	Glen Innes Severn	Likely	Major	Very High	2A	42;43
0	Human Settlement	Other	Emmaville Land Fill	Emmaville Tip Road Emmaville	Glen Innes Severn	Likely	Major	Very High	2A	56
0	Cultural	Aboriginal Significance	Aboriginal Cultural Assets on Forest Land	State Forests across BFMC Area	Tenterfield	Likely	Major	Very High	2A	37
0	Cultural	Aboriginal Significance	Aboriginal Cultural Assets on Private Land	Private land across BFMC area.	Tenterfield	Likely	Major	Very High	2A	53
0	Cultural	Aboriginal Significance	Aboriginal Cultural Assets on Crown Land	Crown Land across BFMC area	Tenterfield	Likely	Major	Very High	2A	52
0	Cultural	Aboriginal Significance	Aboriginal Cultural Assets in National Park	Northern Tablelands BFMC Area	Glen Innes Severn	Likely	Major	Very High	2A	28
38	Human Settlement	Residential	Isolated Dwelling, Bullock Mountain	Bullock Mountain, Rangers Valley	Glen Innes Severn	Likely	Major	Very High	2A	22;8
39	Human Settlement	Residential	Isolated Dwelling, Bullock Mountain	Bullock Mountain, Rangers Valley	Glen Innes Severn	Likely	Major	Very High	2A	22;8
40	Human Settlement	Residential	Dwellings in Roger Rd Area	Roger St, Blue Hills Rd & Blacks Rd, Glen Innes	Glen Innes Severn	Likely	Major	Very High	2A	42;43
41	Human Settlement	Residential	Gilgai Village	Gilgai	Inverell	Likely	Major	Very High	2A	34
42	Human Settlement	Residential	Dwellings on Staggs Lane north side	Gilgai	Inverell	Likely	Major	Very High	2A	22;8
43	Human Settlement	Residential	Dwellings on Browns Lane	Inverell	Inverell	Likely	Major	Very High	2A	41;58
44	Human Settlement	Other	Inverary Homestead and Outbuildings	Bruxner Highway to Inverary Road, Yetman	Inverell	Likely	Major	Very High	2A	16
45	Economic	Infrastructure	The Magistrate PMR Radio Site	Nine Mile Spur, Deepwater	Glen Innes Severn	Likely	Major	Very High	2A	16;62
46	Economic	Infrastructure	Mt McKenzie Repeater Site	Mt McKenzie, Tenterfield	Tenterfield	Likely	Major	Very High	2A	45

Appendix 2 Asset Register

Map Ref No	Asset type	Asset sub type	Asset name	Asset Location	LGA	Likelihood	Consequence	Risk	Priority	Treatment number
47	Human Settlement	Residential	Isolated Dwelling Old Bundarra Rd	Old Bundarra Rd, Copeton Dam	Inverell	Likely	Major	Very High	2A	23;27;32
48	Human Settlement	Residential	Isolated Dwelling Bundarra Rd	Bundarra Rd, Gilgai	Inverell	Likely	Major	Very High	2A	27;32;23
49	Economic	Infrastructure	Frog Hollow Repeater	Glen Elgin	Glen Innes Severn	Likely	Major	Very High	2A	49
50	Economic	Infrastructure	Girard Repeater	Girard State Forest, Sandy Flat	Tenterfield	Likely	Major	Very High	2A	49
51	Human Settlement	Residential	Isolated Dwelling Talmoi Road	Talmoi Road, Tenterfield	Tenterfield	Likely	Major	Very High	2A	16;24
52	Cultural	Other	Mt Carrington Mine Office	Cheviot Hills Fire Trail	Tenterfield	Likely	Major	Very High	2A	25
53	Human Settlement	Residential	Dwellings on Emmaville Rd	Emmaville	Tenterfield	Likely	Major	Very High	2A	48;14;22
54	Human Settlement	Residential	Torrington Village	Torrington	Tenterfield	Likely	Major	Very High	2A	34;55
55	Human Settlement	Residential	Dwellings in Mt Mackenzie Rd Area	Tenterfield	Tenterfield	Likely	Major	Very High	2A	45;59
56	Human Settlement	Residential	Dwellings on Bluff River Road	Sandy Flat	Tenterfield	Likely	Major	Very High	2A	24;40;60
57	Human Settlement	Residential	Dwellings in Chauvel Rd Area	Frazers Cutting	Tenterfield	Likely	Major	Very High	2A	46;4;44
58	Human Settlement	Residential	Dwellings on Ogilvie Drive	Frazers Cutting	Tenterfield	Likely	Major	Very High	2A	4;46;44
59	Human Settlement	Residential	Dwellings on Cyril Smith Cct & Bushy Dr	Frazers Cutting	Tenterfield	Likely	Major	Very High	2A	4;44;46
60	Human Settlement	Special Fire Protection	Glen Innes Correctional Centre	Glen Elgin	Glen Innes Severn	Likely	Major	Very High	2A	57
61	Human Settlement	Residential	Isolated Dwellings Glen Elgin	Glen Elgin	Glen Innes Severn	Likely	Major	Very High	2A	51;35;61
62	Human Settlement	Other	Elouera - UNE Pindari Campus	Inverell LGA	Inverell	Likely	Major	Very High	2A	47
63	Cultural	Other	Gibraltar World Heritage House	Gwydir Highway, Glen Elgin	Glen Innes Severn	Likely	Major	Very High	2A	16
64	Cultural	Non Indigenous	Cooradooral Stock Yards	Mann River, Nymboida NP	Glen Innes Severn	Likely	Major	Very High	2A	16
65	Economic	Infrastructure	Transgrid Sub-station	Fishers Lane, Inverell	Inverell	Likely	Major	Very High	2A	50
66	Economic	Infrastructure	Boonoo Boonoo Depot & Robinsons Cabin	Boonoo Boonoo Falls Rd, Boonoo Boonoo	Tenterfield	Likely	Major	Very High	2A	16;63
67	Cultural	Non Indigenous	Bolivia Shearing Shed	New England Highway, Bolivia	Tenterfield	Likely	Major	Very High	2A	16
68	Cultural	Non Indigenous	Fatmans Hut & 4 Bulls Hut	Washpool National Park	Tenterfield	Likely	Major	Very High	2A	16
69	Cultural	Non Indigenous	Merrigall Stock Yards	Maryland National Park	Tenterfield	Likely	Major	Very High	2A	16
70	Economic	Infrastructure	Head Gate House & Shed (Tick Gates)	Koreeja National Park	Tenterfield	Likely	Major	Very High	2A	16
71	Economic	Tourist and Recreational	Mulligans Camp Ground	Mulligans Drive, Glen Elgin	Glen Innes Severn	Likely	Major	Very High	2A	16
72	Environment	Locally Important	Ashford Caves	Ashford	Inverell	Likely	Major	Very High	2A	16

Appendix 2 Asset Register

Map Ref No	Asset type	Asset sub type	Asset name	Asset Location	LGA	Likelihood	Consequence	Risk	Priority	Treatment number
73	Human Settlement	Residential	Jubullum Aboriginal Village	Tabulam	Tenterfield	Likely	Major	Very High	2A	54,41
74	Human Settlement	Other	Evacuation Route Emmaville Road	Emmaville Road Emmaville	Glen Innes Severn	Likely	Major	Very High	2A	14
75	Human Settlement	Other	Evacuation Route Wellington Vale Road	Wellington Vale Road Emmaville	Glen Innes Severn	Likely	Major	Very High	2A	14
76	Economic	Commercial Forest	FC NSW Plantation	Northern Tablelands	Glen Innes Severn	Likely	Major	Very High	2A	25
0	Human Settlement	Residential	Dwellings on Mt Lindesay Road	Mt Lindesay Road Tenterfield	Tenterfield	Almost certain	Moderate	Very High	2C	69
77	Human Settlement	Residential	Jennings Village	Jennings	Tenterfield	Almost certain	Moderate	Very High	2C	24
78	Human Settlement	Residential	Graman Village	Graman	Inverell	Almost certain	Moderate	Very High	2C	66,64;65
79	Economic	Infrastructure	Tingha Communication Towers	Mount Tingha	Inverell	Almost certain	Moderate	Very High	2C	16;67
80	Human Settlement	Residential	Wandera	Wandera	Inverell	Almost certain	Moderate	Very High	2C	68
0	Human Settlement	Residential	Dwelling - Jennings	Cnr Ballendean and Duke Streets Jennings	Tenterfield	Likely	Moderate	High	3A	81
0	Human Settlement	Residential	Isolated Dwellings, Wallangra	Wallangra, Ashford Rd	Inverell	Likely	Moderate	High	3A	35
0	Human Settlement	Residential	Isolated Dwellings Ashford, Emmaville Rd	Ashford, Emmaville Rd	Inverell	Likely	Moderate	High	3A	74;76
0	Human Settlement	Residential	Isolated Dwelling Wallangra-Ashford Rd	Wallangra-Ashford Rd	Inverell	Likely	Moderate	High	3A	77
0	Human Settlement	Residential	Isolated Dwellings Pindari Dam Rd	Pindari Dam Rd	Inverell	Likely	Moderate	High	3A	75;76
0	Human Settlement	Other	Glen Innes Landfill	Rodgers Road Glen Innes	Tenterfield	Likely	Moderate	High	3A	56
0	Economic	Infrastructure	Wooden bridges across Inverell LGA	Various locations across Inverell LGA	Inverell	Likely	Moderate	High	3A	83
0	Economic	Infrastructure	Wooden bridges across Glen Innes LGA	Various locations across Glen Innes LGA	Glen Innes Severn	Likely	Moderate	High	3A	83
0	Economic	Infrastructure	Wooden Bridges across Tenterfield LGA	Various locations across Tenterfield LGA	Tenterfield	Likely	Moderate	High	3A	83
81	Human Settlement	Residential	Omsulom Multiple Occupancy	Off Beardy River Rd, Bonshaw	Inverell	Likely	Moderate	High	3A	8
82	Environment	Vulnerable	Vulnerable Flora	Inverell	Inverell	Likely	Moderate	High	3A	79
83	Environment	Vulnerable	Vulnerable Flora	Tenterfield	Tenterfield	Likely	Moderate	High	3A	16
84	Human Settlement	Residential	Dwellings on Cunninghams Lane	Inverell	Inverell	Likely	Moderate	High	3A	23;58
85	Human Settlement	Residential	Dwellings on Goonoowigall Road	Goonoowigall	Inverell	Likely	Moderate	High	3A	58;23
86	Economic	Infrastructure	The Gap TV Transmitter Site	The Gap Range, Emmaville	Glen Innes Severn	Likely	Moderate	High	3A	16;82
87	Economic	Infrastructure	Mt Hallam Radio Site	Bonshaw	Inverell	Likely	Moderate	High	3A	45
88	Economic	Infrastructure	Country Energy Radio Repeater Site	Bonshaw	Inverell	Likely	Moderate	High	3A	50
89	Cultural	Other	Tarban Creek Railway Bridge	Tenterfield	Tenterfield	Likely	Moderate	High	3A	72

Appendix 2 Asset Register

Map Ref No	Asset type	Asset sub type	Asset name	Asset Location	LGA	Likelihood	Consequence	Risk	Priority	Treatment number
90	Human Settlement	Residential	Isolated Dwellings Sandy Flat	Sandy Flat, Tenterfield	Tenterfield	Likely	Moderate	High	3A	24,71;85
91	Human Settlement	Residential	Wallangra Road Sub-Division	Ashford	Inverell	Likely	Moderate	High	3A	35;70
92	Cultural	Other	Bluff River Railway Bridge	Sandy Flat, Tenterfield	Tenterfield	Likely	Moderate	High	3A	72
93	Economic	Tourist and Recreational	Wyangarra Area Camping	Wyangarra	Tenterfield	Likely	Moderate	High	3A	87
94	Human Settlement	Special Fire Protection	Gilgai School	Gilgai	Inverell	Likely	Moderate	High	3A	34;73
95	Human Settlement	Special Fire Protection	Sunhaven Aged Care Facility	Ashford	Inverell	Likely	Moderate	High	3A	8;80
96	Human Settlement	Residential	Ashford Village	Ashford	Inverell	Likely	Moderate	High	3A	8;41
97	Cultural	Non Indigenous	Cooradooral Hut	Mann River, Nymboida NP	Glen Innes Severn	Likely	Moderate	High	3A	16
98	Economic	Tourist and Recreational	Raspberry Lookout	Gwydir Highway, Glen Elgin	Glen Innes Severn	Likely	Moderate	High	3A	16
99	Economic	Tourist and Recreational	Boundary Falls Camping & Day Use Area	Gwydir Highway, Glen Elgin	Glen Innes Severn	Likely	Moderate	High	3A	16
100	Cultural	Other	Tamariki Homestead & Outbuildings	McIntyre Falls Rd, Kwiambal NP	Inverell	Likely	Moderate	High	3A	16
101	Economic	Tourist and Recreational	Lanaki Camping Area	Paddys Flat Rd, Paddys Flat	Tenterfield	Likely	Moderate	High	3A	89
102	Cultural	Other	Cudgel Tobacco Barns	Bedwell Downs Rd, Denham	Inverell	Likely	Moderate	High	3A	78
103	Human Settlement	Residential	Stannum Village	Tenterfield	Tenterfield	Likely	Moderate	High	3A	4;41
104	Economic	Tourist and Recreational	Beardy Waters Woodland	Gwydir Highway, east of Glen Innes	Glen Innes Severn	Likely	Moderate	High	3A	88
105	Human Settlement	Other	Tingha Public School	Ruby Street Tingha	Inverell	Likely	Moderate	High	3A	1
106	Human Settlement	Residential	Dwellings on McKechnie Road	McKechnie Road Ruby Creek	Tenterfield	Likely	Moderate	High	3A	86;64;1
107	Economic	Infrastructure	Blue Hills Reservoir	Duval Road	Glen Innes Severn	Likely	Moderate	High	3A	84
108	Economic	Infrastructure	Glen Innes Water Treatment Plant	Watsons Drive Glen Innes	Glen Innes Severn	Likely	Moderate	High	3A	84
109	Human Settlement	Residential	Tent Hill Village	Wellington Vale Road and Tent Hill Road, Tent Hill	Glen Innes Severn	Possible	Major	High	3B	22;94
110	Environment	Vulnerable	Vulnerable Flora	Northern Tablelands	Glen Innes Severn	Possible	Major	High	3B	16
111	Environment	Endangered	Endangered Fauna	Tenterfield	Tenterfield	Possible	Major	High	3B	90
112	Environment	Endangered	Endangered Fauna	Northern Tablelands	Glen Innes Severn	Possible	Major	High	3B	16
113	Environment	Endangered	Endangered Fauna	Northern Tablelands	Glen Innes Severn	Possible	Major	High	3B	16
114	Environment	Vulnerable	Vulnerable Flora	Northern Tablelands	Tenterfield	Possible	Major	High	3B	16
115	Environment	Endangered	Endangered Fauna	Northern Tablelands	Tenterfield	Possible	Major	High	3B	91

Appendix 2 Asset Register

Map Ref No	Asset type	Asset sub type	Asset name	Asset Location	LGA	Likelihood	Consequence	Risk	Priority	Treatment number
116	Environment	Vulnerable	Vulnerable Flora	Northern Tablelands	Tenterfield	Possible	Major	High	3B	92
117	Human Settlement	Residential	Drake Village	Bruxner Highway	Tenterfield	Possible	Major	High	3B	34,93
118	Economic	Infrastructure	Thales (Commonwealth Territory)	East of Jennings	Tenterfield	Unlikely	Catastrophic	High	3C	96
119	Human Settlement	Residential	Dwellings on Campbell Road	Leeffield	Tenterfield	Unlikely	Catastrophic	High	3C	4,95
0	Human Settlement	Residential	Scrub Road Interface.	Scrub Road Tenterfield	Tenterfield	Almost certain	Minor	High	3D	100
120	Environment	Vulnerable	Vulnerable Flora	Northern Tablelands	Tenterfield	Almost certain	Minor	High	3D	16
121	Environment	Endangered	Endangered Fauna	Northern Tablelands	Tenterfield	Almost certain	Minor	High	3D	92
122	Economic	Tourist and Recreational	Boonoo Boonoo Camping Areas	Boonoo Boonoo National Park	Tenterfield	Almost certain	Minor	High	3D	16
123	Economic	Tourist and Recreational	Emu Creek Extreme Retreat	Emu Creek	Tenterfield	Almost certain	Minor	High	3D	4
124	Economic	Tourist and Recreational	Bens Falls Tourist Facility	Severn River Emmaville	Glen Innes Severn	Almost certain	Minor	High	3D	35
125	Human Settlement	Residential	The Willows Aboriginal Holding	Emmaville Rd, Emmaville	Inverell	Almost certain	Minor	High	3D	97
126	Cultural	Non Indigenous	Tingha Cemetery	Garnet Street Tingha	Inverell	Almost certain	Minor	High	3D	98
127	Economic	Commercial	Tingha Landfill	Kempton Road Tingha	Inverell	Almost certain	Minor	High	3D	99
128	Human Settlement	Residential	Emmaville Village	Emmaville	Glen Innes Severn	Almost certain	Minor	High	3D	101
0	Human Settlement	Other	Red Range Landfill	Red Range Tip Road Red range.	Glen Innes Severn	Likely	Minor	Medium	4	56
0	Human Settlement	Other	Deepwater Landfill	Deepwater Tip Road Deepwater	Glen Innes Severn	Likely	Minor	Medium	4	56
129	Human Settlement	Residential	Isolated Dwelling, Black Swamp Road	Black Swamp Road, Tenterfield	Tenterfield	Possible	Moderate	Medium	4	24,3
130	Economic	Tourist and Recreational	Rover Park Recreational Park	Boorook	Tenterfield	Likely	Minor	Medium	4	22,95
131	Environment	Endangered	Endangered Fauna	Northern Tablelands	Tenterfield	Possible	Moderate	Medium	4	91
132	Human Settlement	Residential	Dwellings on Ruwenzorie Road	Rummery Hill, Wellingrove	Glen Innes Severn	Likely	Minor	Medium	4	
133	Economic	Tourist and Recreational	Lanaki Tourist Park	Pretty Gully	Tenterfield	Likely	Minor	Medium	4	
134	Economic	Infrastructure	Sinclair Lookout Road Reserve	Gwydir Highway, West of Glen Innes	Glen Innes Severn	Likely	Minor	Medium	4	
135	Economic	Infrastructure	Ben Nevis Radio Repeater Site	Mt Mitchell	Glen Innes Severn	Likely	Minor	Medium	4	
136	Economic	Infrastructure	Grampian Ridge Repeater	Emmaville	Glen Innes Severn	Possible	Moderate	Medium	4	
137	Economic	Tourist and Recreational	Bullock Mountain Riding Camps	Reddestone	Glen Innes Severn	Likely	Minor	Medium	4	

Appendix 2 Asset Register

Map Ref No	Asset type	Asset sub type	Asset name	Asset Location	LGA	Likelihood	Consequence	Risk	Priority	Treatment number
138	Economic	Infrastructure	Martins Lookout Repeater	Glen Innes	Glen Innes Severn	Unlikely	Major	Medium	4	
139	Economic	Tourist and Recreational	Teepee Resort	Black Swamp Road, Tenterfield	Tenterfield	Likely	Minor	Medium	4	
140	Economic	Agricultural	Vineyards - Deetswood	Leeches Gully Rd	Tenterfield	Unlikely	Major	Medium	4	
141	Economic	Agricultural	Vineyards - Kurrajong Downs	Bruxner Highway	Tenterfield	Unlikely	Major	Medium	4	
142	Human Settlement	Residential	Legume Village	Legume	Tenterfield	Possible	Moderate	Medium	4	
143	Human Settlement	Residential	Urbenville Village	Urbenville	Tenterfield	Possible	Moderate	Medium	4	
144	Human Settlement	Special Fire Protection	Urbenville Hospital	Urbenville	Tenterfield	Possible	Moderate	Medium	4	105
145	Human Settlement	Special Fire Protection	Urbenville Public School	Urbenville	Tenterfield	Possible	Moderate	Medium	4	73
146	Human Settlement	Special Fire Protection	Jennings Public School	Jennings	Tenterfield	Possible	Moderate	Medium	4	73
147	Economic	Agricultural	Rangers Valley Feedlot	Rangers Valley	Glen Innes Severn	Unlikely	Major	Medium	4	
148	Economic	Infrastructure	Inverell Airport	Gilgai	Inverell	Possible	Moderate	Medium	4	
149	Economic	Agricultural	Gunee Feedlot	Delungra	Inverell	Unlikely	Major	Medium	4	
150	Economic	Tourist and Recreational	Bald Rock Camping/Picnic Area	Bald Rock NP	Tenterfield	Likely	Minor	Medium	4	16
151	Economic	Tourist and Recreational	Kings Plains Camping Grounds	Kings Plains National Park	Inverell	Likely	Minor	Medium	4	106
152	Economic	Tourist and Recreational	Lemontree Camping Area	Kwiambal National Park	Inverell	Likely	Minor	Medium	4	16
153	Economic	Infrastructure	Captains Creek Lookout	Toooloom National Park	Tenterfield	Likely	Minor	Medium	4	16
154	Economic	Tourist and Recreational	Trough Creek Camping Area	Koreela National Park	Tenterfield	Likely	Minor	Medium	4	16
155	Economic	Tourist and Recreational	McIlveen Park Lookout Reserve	McIlveen Park Rd, Inverell	Inverell	Likely	Minor	Medium	4	
156	Economic	Tourist and Recreational	Blair Athol Reserve	Gwydir Highway, Inverell	Inverell	Likely	Minor	Medium	4	
157	Economic	Tourist and Recreational	Fishing Camp	Bruxner Highway, Sandy Hills	Tenterfield	Likely	Minor	Medium	4	
158	Economic	Agricultural	TSR Sandy Flat	New England Highway, Sandy Flat	Tenterfield	Likely	Minor	Medium	4	103
159	Human Settlement	Residential	Isolated Dwellings Tarban Rd	Tenterfield	Tenterfield	Possible	Moderate	Medium	4	
160	Human Settlement	Residential	Isolated Dwellings Sunnyside Loop Rd	Tenterfield	Tenterfield	Possible	Moderate	Medium	4	
161	Economic	Commercial Forest	FNSW Plantation	Northern Tablelands	Tenterfield	Likely	Minor	Medium	4	25
162	Economic	Commercial Forest	Private Plantation	Tenterfield LGA	Tenterfield	Likely	Minor	Medium	4	104
163	Economic	Commercial Forest	FCNSW Native Forest	Northern Tablelands	Tenterfield	Likely	Minor	Medium	4	25
164	Human Settlement	Other	NSP Woodward Park	Cnr Alison Street and Bruxner Highway Drake	Tenterfield	Possible	Moderate	Medium	4	102
165	Human Settlement	Other	NSP Tingha Recreation Reserve	Cnr Garnet and Ruby Streets Tingha	Inverell	Possible	Moderate	Medium	4	102

Appendix 2 Asset Register

Map Ref No	Asset type	Asset sub type	Asset name	Asset Location	LGA	Likelihood	Consequence	Risk	Priority	Treatment number
166	Human Settlement	Other	NSP Gilgai Public Hall	Hall Street Gilgai	Inverell	Possible	Moderate	Medium	4	102
167	Human Settlement	Other	NSP Glencoe Sports Ground	New England Highway Glencoe	Glen Innes Severn	Possible	Moderate	Medium	4	102
168	Human Settlement	Other	NSP Apex Park	Crn Young and Severn Streets Deepwater	Glen Innes Severn	Possible	Moderate	Medium	4	102
169	Human Settlement	Other	NSP Torrington Memorial Hall	Bates Road Torrington	Tenterfield	Possible	Moderate	Medium	4	102
170	Human Settlement	Other	NSP Emmaville Memorial Hall	93 Moore Street Emmaville	Glen Innes Severn	Possible	Moderate	Medium	4	102
171	Human Settlement	Other	NSP Federation Park	Petrie Street Tenterfield	Tenterfield	Possible	Moderate	Medium	4	102
0	Human Settlement	Residential	Glen Innes Township	Glen Innes	Glen Innes Severn	Unlikely	Minor	Low	NA	
0	Human Settlement	Residential	Red Range Village	Red Range	Glen Innes Severn	Unlikely	Minor	Low	NA	
0	Human Settlement	Residential	Deepwater Village	Deepwater	Glen Innes Severn	Unlikely	Minor	Low	NA	
172	Economic	Tourist and Recreational	Northern Foreshores Copeton Dam	Copeton Dam	Inverell	Unlikely	Moderate	Low	NA	110
173	Economic	Infrastructure	Acacia Plateau Repeater	Legume	Tenterfield	Unlikely	Minor	Low	NA	
174	Economic	Infrastructure	Uambi Repeater	Old Bundarra Road, Gilgai	Inverell	Unlikely	Moderate	Low	NA	
175	Economic	Tourist and Recreational	Crooked Creek Rest Area	Drake	Tenterfield	Unlikely	Minor	Low	NA	37
176	Human Settlement	Special Fire Protection	Emmaville Hosptial	Emmaville	Glen Innes Severn	Unlikely	Moderate	Low	NA	109
177	Human Settlement	Residential	Dwellings on Common Rd & Billarimba Rd	Tenterfield	Tenterfield	Unlikely	Moderate	Low	NA	
178	Human Settlement	Residential	Liston Village	Liston	Tenterfield	Unlikely	Moderate	Low	NA	
179	Cultural	Other	Glen Elgin School House	Glen Elgin	Glen Innes Severn	Unlikely	Moderate	Low	NA	107
180	Human Settlement	Residential	Dundee Village	Dundee	Glen Innes Severn	Unlikely	Moderate	Low	NA	
181	Human Settlement	Residential	Deepwater Village	Deepwater	Glen Innes Severn	Unlikely	Minor	Low	NA	
182	Human Settlement	Special Fire Protection	Emmaville Public School	Emmaville	Glen Innes Severn	Unlikely	Moderate	Low	NA	73
183	Human Settlement	Residential	Yetman Village	Yetman	Inverell	Unlikely	Moderate	Low	NA	
184	Human Settlement	Residential	Wallangra Village	Wallangra	Inverell	Unlikely	Moderate	Low	NA	
185	Human Settlement	Residential	Elsmore Village	Elsmore	Inverell	Unlikely	Moderate	Low	NA	
186	Human Settlement	Residential	Bruderhof Community	Inverell LGA	Inverell	Unlikely	Moderate	Low	NA	
187	Human Settlement	Special Fire Protection	Ashford Public School	Ashford	Inverell	Unlikely	Moderate	Low	NA	73
188	Human Settlement	Residential	Delungra Village	Delungra	Inverell	Unlikely	Moderate	Low	NA	

Appendix 2 Asset Register

Map Ref No	Asset type	Asset sub type	Asset name	Asset Location	LGA	Likelihood	Consequence	Risk	Priority	Treatment number
189	Human Settlement	Residential	Gum Flat Village	Gum Flat	Inverell	Unlikely	Moderate	Low	NA	1
190	Human Settlement	Special Fire Protection	Gum Flat Public School	Gum Flat	Inverell	Unlikely	Moderate	Low	NA	73
191	Human Settlement	Other	NSP Red Range Hall	Cnr Victoria and Grafton Streets, Red Range	Glen Innes Severn	Unlikely	Moderate	Low	NA	108
192	Human Settlement	Other	NSP Graham Park	Ruby Street Tingha	Inverell	Unlikely	Moderate	Low	NA	102
193	Human Settlement	Other	NSP King George Oval	Cnr Wentworth St and Services Lane Glen Innes	Glen Innes Severn	Unlikely	Moderate	Low	NA	102
194	Human Settlement	Other	NSP Bonshaw Memorial Hall	Miller Street Bonshaw	Inverell	Unlikely	Moderate	Low	NA	102
195	Human Settlement	Other	NSP Ashford Oval	Albury Street Ashford	Inverell	Unlikely	Moderate	Low	NA	102
196	Human Settlement	Other	NSP Inverell Showground	Tingha Road Inverell	Inverell	Unlikely	Moderate	Low	NA	102
197	Human Settlement	Other	Glen Innes Sale Yards	Lang Street Glen Innes	Tenterfield	Unlikely	Minor	Low	NA	
198	Economic	Infrastructure	Glen Innes Airport	Emmaville Road Glen Innes	Glen Innes Severn	Unlikely	Minor	Low	NA	
199	Human Settlement	Residential	Glencoe Village	Glencoe	Glen Innes Severn	Unlikely	Minor	Low	NA	
200	Economic	Infrastructure	Beardy Waters Pump Station	Beardy Waters	Glen Innes Severn	Unlikely	Minor	Low	NA	
201	Economic	Infrastructure	Deepwater Water Treatment Plant	Deepwater	Glen Innes Severn	Unlikely	Moderate	Low	NA	
202	Economic	Infrastructure	Sewage Treatment Plant	New England Highway Glen Innes	Glen Innes Severn	Unlikely	Moderate	Low	NA	
203	Human Settlement	Residential	Glen Innes Township Interface	Glen Innes	Glen Innes Severn	Unlikely	Moderate	Low	NA	
204	Human Settlement	Residential	Red Range Village	Red Range	Glen Innes Severn	Possible	Minor	Low	NA	
205	Human Settlement	Residential	Deepwater Village	Deepwater	Glen Innes Severn	Possible	Minor	Low	NA	

Appendix 3 Treatment Register

Priority (Risk Rating)	Asset ID	Asset Name	Asset Location	Class	Subclass	Strategy	Treatment ID	Action Description	Responsible Agencies	Other RA	Support Agencies	Other SA	2122	2223	2324	2425	2526	2627
1A (Extreme)	1	Dwellings on Long Gully Rd	Drake	Human Settlement	Residential	Community Education	1	Deliver targeted Community Engagement program	RFS		LGA,FCNSW		[2122]	[2223]	[2324]	[2425]	[2526]	
						Hazard Reduction	9	Monitor Fuel Loads	RFS,FCNSW		RFS		[2122]	[2223]	[2324]	[2425]	[2526]	
						Preparedness	2	Inspect and Maintain Fire Trails	FCNSW		RFS		[2122]	[2223]	[2324]	[2425]	[2526]	
	2	Dwellings on Mud Flat Rd	Drake	Human Settlement	Residential	Community Education	1	Deliver targeted Community Engagement program	RFS		LGA,FCNSW		[2122]	[2223]	[2324]	[2425]	[2526]	
						Hazard Reduction	9	Monitor Fuel Loads	RFS,FCNSW		RFS		[2122]	[2223]	[2324]	[2425]	[2526]	
						Preparedness	2	Inspect and Maintain Fire Trails	FCNSW		RFS		[2122]	[2223]	[2324]	[2425]	[2526]	
	3	Dwellings on Leslie Creek Rd	Drake	Human Settlement	Residential	Community Education	1	Deliver targeted Community Engagement program	RFS		LGA,FCNSW		[2122]	[2223]	[2324]	[2425]	[2526]	
						Hazard Reduction	9	Monitor Fuel Loads	RFS,FCNSW		RFS		[2122]	[2223]	[2324]	[2425]	[2526]	
						Preparedness	2	Inspect and Maintain Fire Trails	FCNSW		RFS		[2122]	[2223]	[2324]	[2425]	[2526]	
	4	Dwellings on Old Bruxner Rd	Drake	Human Settlement	Residential	Community Education	1	Deliver targeted Community Engagement program	RFS		LGA,FCNSW		[2122]	[2223]	[2324]	[2425]	[2526]	
						Hazard Reduction	9	Monitor Fuel Loads	RFS,FCNSW		RFS		[2122]	[2223]	[2324]	[2425]	[2526]	
Preparedness						2	Inspect and Maintain Fire Trails	FCNSW		RFS		[2122]	[2223]	[2324]	[2425]	[2526]		
5	Dwellings on Sugar Bag Rd	Drake	Human Settlement	Residential	Community Education	1	Deliver targeted Community Engagement program	RFS		LGA,FCNSW		[2122]	[2223]	[2324]	[2425]	[2526]		
					Hazard Reduction	9	Monitor Fuel Loads	RFS,FCNSW		RFS		[2122]	[2223]	[2324]	[2425]	[2526]		
					Preparedness	2	Inspect and Maintain Fire Trails	FCNSW		RFS		[2122]	[2223]	[2324]	[2425]	[2526]		
6	Dwellings on Aqua Park Rd	Mt Mitchell	Human Settlement	Residential	Community Education	1	Deliver targeted Community Engagement program	RFS		LGA,FCNSW		[2122]	[2223]	[2324]	[2425]	[2526]		
					Hazard Reduction	13	Maintain SFAZ	Private		NPWS,RFS,FCNSW		[2122]	[2223]	[2324]	[2425]	[2526]		
					Preparedness	3	Undertake Pre Incident Planning	FRNSW,Private		LGA,RFS		[2122]	[2223]	[2324]	[2425]	[2526]		
7	Dwellings on Bruxner Highway	Drake	Human Settlement	Residential	Community Education	1	Deliver targeted Community Engagement program	RFS		LGA,FCNSW		[2122]	[2223]	[2324]	[2425]	[2526]		
					Hazard Reduction	13	Maintain SFAZ	Private		NPWS,RFS,FCNSW		[2122]	[2223]	[2324]	[2425]	[2526]		
					Preparedness	3	Undertake Pre Incident Planning	FRNSW,Private		LGA,RFS		[2122]	[2223]	[2324]	[2425]	[2526]		
8	Isolated Dwellings, Rivertree Rd	Rivertree Rd	Human Settlement	Residential	Community Education	4	Conduct Community Awareness Program	RFS				[2122]	[2223]	[2324]	[2425]	[2526]		
					Preparedness	5	Inspect Fire Trails	RFS				[2122]	[2223]	[2324]	[2425]	[2526]		
					Preparedness	8	Facilitate Pre-incident Planning	Private		RFS		[2122]	[2223]	[2324]	[2425]	[2526]		
9	Kangavalla	Shannonvale	Human Settlement	Residential	Preparedness	6	Undertake Pre-incident Planning	Private			RFS		[2122]	[2223]	[2324]	[2425]	[2526]	
10	WW2 Tank Traps	Mt Lindsay Rd	Cultural Heritage	Non Indigenous	Hazard Reduction	7	Monitor Fuel Loads and Maintain to < 8t ha	LGA			RFS		[2122]	[2223]	[2324]	[2425]	[2526]	
					Preparedness	10	Create and Maintain APZ	LGA				[2122]	[2223]	[2324]	[2425]	[2526]		
11	Copeton Dam Camping Area	Howell Road Tingha	Human Settlement	Other	Community Education	1	Deliver targeted Community Engagement program	RFS			LGA,FCNSW		[2122]	[2223]	[2324]	[2425]	[2526]	
					Hazard Reduction	15	Implement Fire Management Strategy	CL				[2122]	[2223]	[2324]	[2425]	[2526]		

Appendix 3 Treatment Register

Priority (Risk Rating)	Asset ID	Asset Name	Asset Location	Class	Subclass	Strategy	Treatment ID	Action Description	Responsible Agencies	Other RA	Support Agencies	Other SA	2122	2223	2324	2425	2526	2627	
	12	Evacuation Route Wyalaliba	Old Grafton Road Diehard	Human Settlement	Other	Hazard Reduction	14	Undertake Vegetation Management on road reserve	LGA				[2122]	[2223]	[2324]	[2425]	[2526]		
1B (Extreme)	13	Dwellings on Pateman Rd	Drake	Human Settlement	Residential	Community Education	1	Deliver targeted Community Engagement program	RFS		LGA,FCNSW		[2122]	[2223]	[2324]	[2425]	[2526]		
						Hazard Reduction	9	Monitor Fuel Loads	RFS,FCNSW		RFS	[2122]	[2223]	[2324]	[2425]	[2526]			
	14	Dwellings in Sunset Estate area	Dundee	Human Settlement	Residential	Community Education	1	Deliver targeted Community Engagement program	RFS		LGA,FCNSW		[2122]	[2223]	[2324]	[2425]	[2526]		
						Hazard Reduction	7	Monitor Fuel Loads and Maintain to < 5t/ha	LGA		RFS	[2122]	[2223]	[2324]	[2425]	[2526]			
						Preparedness	3	Undertake Fire Incident Planning	FRNSW,Private		LGA,RFS	[2122]	[2223]	[2324]	[2425]	[2526]			
	15	Kwiambal Houses and Workshop	McIntyre Falls Road, Kwiambal NP	Human Settlement	Other	Hazard Reduction	16	Implement NPWS Fire Management Strategy	NPWS				[2122]	[2223]	[2324]	[2425]	[2526]		
	16	Isolated Dwelling, Butler Mine Rd	Butler Mine Road	Human Settlement	Residential	Community Education	1	Deliver targeted Community Engagement program	RFS			LGA,FCNSW		[2122]	[2223]	[2324]	[2425]	[2526]	
						Hazard Reduction	16	Implement NPWS Fire Management Strategy	NPWS			[2122]	[2223]	[2324]	[2425]	[2526]			
							18	Create and Maintain APZ	NPWS,Private		RFS	[2122]	[2223]	[2324]	[2425]	[2526]			
						Preparedness	8	Facilitate Pre-incident Planning	Private		RFS	[2122]	[2223]	[2324]	[2425]	[2526]			
	17	Isolated Dwelling, Currys Rd	Currys Rd, Bolivia	Human Settlement	Residential	Community Education	24	Conduct Community Awareness Program	RFS			NPWS		[2122]	[2223]	[2324]	[2425]	[2526]	
						Hazard Reduction	16	Implement NPWS Fire Management Strategy	NPWS			[2122]	[2223]	[2324]	[2425]	[2526]			
18	Wyalaliba Multiple Occupancy	Wyalaliba, Diehard	Human Settlement	Residential	Community Education	1	Deliver targeted Community Engagement program	RFS			LGA,FCNSW		[2122]	[2223]	[2324]	[2425]	[2526]		
					Hazard Reduction	16	Implement NPWS Fire Management Strategy	NPWS			[2122]	[2223]	[2324]	[2425]	[2526]				
						25	Implement FCNSW Plan of Management	FCNSW			[2122]	[2223]	[2324]	[2425]	[2526]				
					Preparedness	5	Inspect Fire Trails	RFS			[2122]	[2223]	[2324]	[2425]	[2526]				
						26	Undertake Pre-incident Planning	Private		RFS	[2122]	[2223]	[2324]	[2425]	[2526]				
19	Currawinya Multiple Occupancy	Paddys Flat Road, Paddys Flat	Human Settlement	Residential	Community Education	19	Conduct Community Awareness Meeting	RFS			NPWS		[2122]	[2223]	[2324]	[2425]	[2526]		
					Hazard Reduction	20	Monitor Fuel Loads	Private		RFS	[2122]	[2223]	[2324]	[2425]	[2526]				
						30	Implement NPWS FMS as per entries in Guardian	LGA			[2122]	[2223]	[2324]	[2425]	[2526]				
						31	Implement Forest Corp's Fire management plan	FCNSW			[2122]	[2223]	[2324]	[2425]	[2526]				
20	Isolated Dwellings, Monterey Lane	Monterey Lane, Copeton Dam	Human Settlement	Residential	Community Education	23	Conduct Community Awareness Program	RFS				[2122]	[2223]	[2324]	[2425]	[2526]			

Appendix 3 Treatment Register

Priority (Risk Rating)	Asset ID	Asset Name	Asset Location	Class	Subclass	Strategy	Treatment ID	Action Description	Responsible Agencies	Other RA	Support Agencies	Other SA	2122	2223	2324	2425	2526	2627
						Hazard Reduction	27	Create and Maintain APZ	Private		RFS		[2122]	[2223]	[2324]	[2425]	[2526]	
						Hazard Reduction	32	Implement NPWS Fire Management Strategy	NPWS				[2122]	[2223]	[2324]	[2425]	[2526]	
	21	Old Mill Village	Stannifer Road, Old Mill	Human Settlement	Residential	Community Education	23	Conduct Community Awareness Program	RFS				[2122]	[2223]	[2324]	[2425]	[2526]	
						Hazard Reduction	32	Implement NPWS Fire Management Strategy	NPWS				[2122]	[2223]	[2324]	[2425]	[2526]	
						Hazard Reduction	33	Implement Forest Corps Fire Management Plan	FCNSW				[2122]	[2223]	[2324]	[2425]	[2526]	
						Preparedness	21	Inspect and Maintain Old Mill Fire Trail	CL,NPWS,DPI,FCNSW		RFS		[2122]	[2223]	[2324]	[2425]	[2526]	
						Preparedness	29	Facilitate Stannifer Old Mill CPP	CL,LGA,NPWS,DPI,FCNSW		RFS		[2122]	[2223]	[2324]	[2425]	[2526]	
	22	Old Girard Fire Shed	Tower Fire Trail, Drake	Cultural Heritage	Other	Hazard Reduction	25	Implement FCNSW Plan of Management	FCNSW				[2122]	[2223]	[2324]	[2425]	[2526]	
	23	Red Rock Mine Buildings	Sandy Hills, Tenterfield	Cultural Heritage	Other	Hazard Reduction	25	Implement FCNSW Plan of Management	FCNSW				[2122]	[2223]	[2324]	[2425]	[2526]	
	24	Dwellings on Carrot Farm Rd	Dundee	Human Settlement	Residential	Community Education	22	Conduct Community Awareness Program	RFS				[2122]	[2223]	[2324]	[2425]	[2526]	
						Property Planning	28	Implement NPWS Fire Management Strategy	NPWS				[2122]	[2223]	[2324]	[2425]	[2526]	
	25	Dwellings in Rummery Hill area	Reddestone	Human Settlement	Residential	Community Education	22	Conduct Community Awareness Program	RFS				[2122]	[2223]	[2324]	[2425]	[2526]	
						Hazard Reduction	20	Monitor Fuel Loads	Private		RFS		[2122]	[2223]	[2324]	[2425]	[2526]	
						Preparedness	8	Facilitate Pre-Incident Planning	Private		RFS		[2122]	[2223]	[2324]	[2425]	[2526]	
						Preparedness	17	Facilitate SWS Program	RFS				[2122]	[2223]	[2324]	[2425]	[2526]	
	26	Cypress Logging Buildings	Holdfast Rd, Dhinna Dhinna NP	Cultural Heritage	Other	Hazard Reduction	16	Implement NPWS Fire Management Strategy	NPWS				[2122]	[2223]	[2324]	[2425]	[2526]	
	27	Arakoola Shearing Shed	Arakoola Nature Reserve	Cultural Heritage	Other	Hazard Reduction	16	Implement NPWS Fire Management Strategy	NPWS				[2122]	[2223]	[2324]	[2425]	[2526]	
	28	Stannifer Village	Stannifer, Inverell	Human Settlement	Residential	Preparedness	29	Facilitate Stannifer Old Mill CPP	CL,LGA,NPWS,DPI,FCNSW		RFS		[2122]	[2223]	[2324]	[2425]	[2526]	
1C (Extreme)	29	Merrigall House	Maryland NP	Human Settlement	Other	Hazard Reduction	16	Implement NPWS Fire Management Strategy	NPWS				[2122]	[2223]	[2324]	[2425]	[2526]	
	30	Dwellings on Ponds Road	Ponds Road Gilgai	Human Settlement	Residential	Community Education	23	Conduct Community Awareness Program	RFS				[2122]	[2223]	[2324]	[2425]	[2526]	
						Hazard Reduction	32	Implement NPWS Fire Management Strategy	NPWS				[2122]	[2223]	[2324]	[2425]	[2526]	
						Hazard Reduction	39	Implement Forest Corps Fire Management Plan	FCNSW				[2122]	[2223]	[2324]	[2425]	[2526]	
	31	Isolated Dwellings Paddys Flat Rd	Paddys Flat	Human Settlement	Residential	Community Education	4	Conduct Community Awareness Program	RFS				[2122]	[2223]	[2324]	[2425]	[2526]	
						Preparedness	3	Undertake Pre Incident Planning	FRNSW,Private		LGA,RFS		[2122]	[2223]	[2324]	[2425]	[2526]	
	32	Dwellings on Old Stannifer Rd	Gilgai	Human Settlement	Residential	Community Education	23	Conduct Community Awareness Program	RFS				[2122]	[2223]	[2324]	[2425]	[2526]	

Appendix 3 Treatment Register

Priority (Risk Rating)	Asset ID	Asset Name	Asset Location	Class	Subclass	Strategy	Treatment ID	Action Description	Responsible Agencies	Other RA	Support Agencies	Other SA	2122	2223	2324	2425	2526	2627
						Preparedness	34	Implement Community Protection Plan	CL,LGA,NPWS,FRNSW,Private,RFS,DPI,FCNSW				[2122]	[2223]	[2324]	[2425]	[2526]	
							36	Implement SWS Program	RFS				[2122]			[2425]		[2627]
	33	Isolated Dwellings Rocky River	Rocky River	Human Settlement	Residential	Community Education	35	Conduct Community Awareness Program	RFS				[2122]	[2223]	[2324]	[2425]	[2526]	
						Hazard Reduction	25	Implement FCNSW Plan of Management	FCNSW				[2122]	[2223]	[2324]	[2425]	[2526]	
						Preparedness	2	Inspect and Maintain Fire Trails	FCNSW		RFS		[2122]	[2223]	[2324]	[2425]	[2526]	
	34	Isolated Dwellings Gulf Rd	Emmaville	Human Settlement	Residential	Community Education	22	Conduct Community Awareness Program	RFS				[2122]	[2223]	[2324]	[2425]	[2526]	
						Property Planning	28	Implement NPWS Fire Management Strategy	NPWS				[2122]	[2223]	[2324]	[2425]	[2526]	
	35	Mt Topper Plantation	Mount Toppper	Economic	Commercial Forests	Hazard Reduction	25	Implement FCNSW Plan of Management	FCNSW				[2122]	[2223]	[2324]	[2425]	[2526]	
	36	Mount Topper Plantation	Tingha	Economic	Commercial	Preparedness	37	Implement Forest Corps Fire Management Plan	FCNSW				[2122]	[2223]	[2324]	[2425]	[2526]	
	37	Tingha Village	Tingha Village	Human Settlement	Residential	Community Education	4	Conduct Community Awareness Program	RFS				[2122]	[2223]	[2324]	[2425]	[2526]	
						Preparedness	38	Implement Tingha Community Protection Plan	CL,LGA;Other	Tingha Common Trust	RFS		[2122]	[2223]	[2324]	[2425]	[2526]	
2A (Very High)	0	Aboriginal Cultural Assets in National Park	Northern Tablelands BPMC Area	Cultural Heritage	Aboriginal Significance	Property Planning	28	Implement NPWS Fire Management Strategy	NPWS				[2122]	[2223]	[2324]	[2425]	[2526]	
		Aboriginal Cultural Assets on Crown Land	Crown Land across BPMC area	Cultural Heritage	Aboriginal Significance	Hazard Reduction	52	Implement Crown Lands Fire Management Plan	CL				[2122]	[2223]	[2324]	[2425]	[2526]	
		Aboriginal Cultural Assets on Forest Land	State Forests across BPMC Area	Cultural Heritage	Aboriginal Significance	Preparedness	37	Implement Forest Corps Fire Management Plan	FCNSW				[2122]	[2223]	[2324]	[2425]	[2526]	
		Aboriginal Cultural Assets on Private Land	Private land across BPMC area.	Cultural Heritage	Aboriginal Significance	Community Education	53	Deliver targeted Community Engagement program	Other	LALC			[2122]	[2223]	[2324]	[2425]	[2526]	
		Dwellings on Blue Hills Road	Blue Hills Road Glen Innes	Human Settlement	Residential	Preparedness	43	Monitor Fuel Loads and Conduct HR	LGA		FRNSW		[2122]	[2223]	[2324]	[2425]	[2526]	
						Property Planning	42	Prepare Bushfire Survival Plan	FRNSW				[2122]	[2223]	[2324]	[2425]	[2526]	
		Emmaville Land Fill	Emmaville Tip Road Emmaville	Human Settlement	Other	Preparedness	56	Create and Maintain APZ	LGA				[2122]	[2223]	[2324]	[2425]	[2526]	
	38	Isolated Dwelling, Bullock Mountain	Bullock Mountain, Rangers Valley	Human Settlement	Residential	Community Education	22	Conduct Community Awareness Program	RFS				[2122]	[2223]	[2324]	[2425]	[2526]	
						Preparedness	8	Facilitate Pre-incident Planning	Private		RFS		[2122]	[2223]	[2324]	[2425]	[2526]	
	39	Isolated Dwelling, Bullock Mountain	Bullock Mountain, Rangers Valley	Human Settlement	Residential	Community Education	22	Conduct Community Awareness Program	RFS				[2122]	[2223]	[2324]	[2425]	[2526]	
						Preparedness	8	Facilitate Pre-incident Planning	Private		RFS		[2122]	[2223]	[2324]	[2425]	[2526]	
	40	Dwellings in Roger Rd Area	Roger St, Blue Hills Rd & Blacks Rd, Glen Innes	Human Settlement	Residential	Preparedness	43	Monitor Fuel Loads and Conduct HR	LGA		FRNSW		[2122]	[2223]	[2324]	[2425]	[2526]	
						Property Planning	42	Prepare Bushfire Survival Plan	FRNSW				[2122]	[2223]	[2324]	[2425]	[2526]	

Appendix 3 Treatment Register

Priority (Risk Rating)	Asset ID	Asset Name	Asset Location	Class	Subclass	Strategy	Treatment ID	Action Description	Responsible Agencies	Other RA	Support Agencies	Other SA	2122	2223	2324	2425	2526	2627
	41	Gilgai Village	Gilgai	Human Settlement	Residential	Preparedness	34	Implement Community Protection Plan	CL,LGA,NPWS,FRNSW,Private,RFS,DPI,FCNSW				[2122]	[2223]	[2324]	[2425]	[2526]	
	42	Dwellings on Staggs Lane north side	Gilgai	Human Settlement	Residential	Community Education	22	Conduct Community Awareness Program	RFS				[2122]	[2223]	[2324]	[2425]	[2526]	
						Preparedness	8	Facilitate Pre-incident Planning	Private		RFS		[2122]	[2223]	[2324]	[2425]	[2526]	
	43	Dwellings on Browns Lane	Inverell	Human Settlement	Residential	Hazard Reduction	41	Monitor Fuel Loads	CL,Private		RFS		[2122]	[2223]	[2324]	[2425]	[2526]	
							58	Implement NPWS Fire Management Strategy	NPWS				[2122]	[2223]	[2324]	[2425]	[2526]	
	44	Inverary Homestead and Outbuildings	Bruxner Highway to Inverary Road, Yatman	Human Settlement	Other	Hazard Reduction	16	Implement NPWS Fire Management Strategy	NPWS				[2122]	[2223]	[2324]	[2425]	[2526]	
	45	The Magistrate PMR Radio Site	Nine Mile Spur, Deepwater	Economic	Infrastructure	Hazard Reduction	16	Implement NPWS Fire Management Strategy	NPWS				[2122]	[2223]	[2324]	[2425]	[2526]	
							62	Create and Maintain APZ	NPWS				[2122]	[2223]	[2324]	[2425]	[2526]	
	46	Mt McKenzie Repeater Site	Mt McKenzie, Tenterfield	Economic	Infrastructure	Hazard Reduction	45	Maintain APZ	Other	Comms Tower Lessee	RFS		[2122]	[2223]	[2324]	[2425]	[2526]	
	47	Isolated Dwelling Old Bundarra Rd	Old Bundarra Rd, Copeton Dam	Human Settlement	Residential	Community Education	23	Conduct Community Awareness Program	RFS				[2122]	[2223]	[2324]	[2425]	[2526]	
						Hazard Reduction	27	Create and Maintain APZ	Private		RFS		[2122]	[2223]	[2324]	[2425]	[2526]	
							32	Implement NPWS Fire Management Strategy	NPWS				[2122]	[2223]	[2324]	[2425]	[2526]	
	48	Isolated Dwelling Bundarra Rd	Bundarra Rd, Gilgai	Human Settlement	Residential	Community Education	23	Conduct Community Awareness Program	RFS				[2122]	[2223]	[2324]	[2425]	[2526]	
						Hazard Reduction	27	Create and Maintain APZ	Private		RFS		[2122]	[2223]	[2324]	[2425]	[2526]	
							32	Implement NPWS Fire Management Strategy	NPWS				[2122]	[2223]	[2324]	[2425]	[2526]	
	49	Frog Hollow Repeater	Glen Elgin	Economic	Infrastructure	Hazard Reduction	49	Maintain APZ	FCNSW		Police		[2122]	[2223]	[2324]	[2425]	[2526]	
	50	Girard Repeater	Girard State Forest, Sandy Flat	Economic	Infrastructure	Hazard Reduction	49	Maintain APZ	FCNSW		Police		[2122]	[2223]	[2324]	[2425]	[2526]	
	51	Isolated Dwelling Talmoi Road	Talmoi Road, Tenterfield	Human Settlement	Residential	Community Education	24	Conduct Community Awareness Program	RFS		NPWS		[2122]	[2223]	[2324]	[2425]	[2526]	
						Hazard Reduction	16	Implement NPWS Fire Management Strategy	NPWS				[2122]	[2223]	[2324]	[2425]	[2526]	
	52	Mt Carrington Mine Office	Cheviot Hills Fire Trail	Cultural Heritage	Other	Hazard Reduction	25	Implement FCNSW Plan of Management	FCNSW				[2122]	[2223]	[2324]	[2425]	[2526]	
	53	Dwellings on Emmaville Rd	Emmaville	Human Settlement	Residential	Community Education	22	Conduct Community Awareness Program	RFS				[2122]	[2223]	[2324]	[2425]	[2526]	
						Hazard Reduction	14	Undertake Vegetation Management on road reserve	LGA				[2122]	[2223]	[2324]	[2425]	[2526]	
							48	Create and Maintain Interface APZ	LGA,RFS		RFS		[2122]	[2223]	[2324]	[2425]	[2526]	
	54	Torrington Village	Torrington	Human Settlement	Residential	Hazard Reduction	55	Implement Torrington Community Protection Plan.	CL,LGA,NPWS,Other	Torrington Common Trust	RFS		[2122]	[2223]	[2324]	[2425]	[2526]	

Appendix 3 Treatment Register

Priority (Risk Rating)	Asset ID	Asset Name	Asset Location	Class	Subclass	Strategy	Treatment ID	Action Description	Responsible Agencies	Other RA	Support Agencies	Other SA	2122	2223	2324	2425	2526	2627
						Preparedness	34	Implement Community Protection Plan	CL,LGA,NPWS,FRNSW,Private,RFS,DPI,FCNSW				[2122]	[2223]	[2324]	[2425]	[2526]	
	55	Dwellings in Mt Mackenzie Rd Area	Tenterfield	Human Settlement	Residential	Hazard Reduction	45	Maintain APZ	Other	Comms Tower Lessee	RFS		[2122]	[2223]	[2324]	[2425]	[2526]	
							59	Implement NPWS Fire Management Strategy	NPWS				[2122]	[2223]	[2324]	[2425]	[2526]	
	56	Dwellings on Bluff River Road	Sandy Flat	Human Settlement	Residential	Community Education	24	Conduct Community Awareness Program	RFS		NPWS		[2122]	[2223]	[2324]	[2425]	[2526]	
						Hazard Reduction	40	Monitor Fuel Loads	Private,RFS				[2122]	[2223]	[2324]	[2425]	[2526]	
							60	Implement NPWS Fire Management Strategy	NPWS				[2122]	[2223]	[2324]	[2425]	[2526]	
	57	Dwellings in Chauvel Rd Area	Frazers Cutting	Human Settlement	Residential	Community Education	4	Conduct Community Awareness Program	RFS				[2122]	[2223]	[2324]	[2425]	[2526]	
						Hazard Reduction	46	Monitor Fuel Loads	LGA		RFS		[2122]	[2223]	[2324]	[2425]	[2526]	
						Preparedness	44	Facilitate SWS Program	RFS				[2122]	[2223]	[2324]	[2425]	[2526]	
	58	Dwellings on Ogilvie Drive	Frazers Cutting	Human Settlement	Residential	Community Education	4	Conduct Community Awareness Program	RFS				[2122]	[2223]	[2324]	[2425]	[2526]	
						Hazard Reduction	46	Monitor Fuel Loads	LGA		RFS		[2122]	[2223]	[2324]	[2425]	[2526]	
						Preparedness	44	Facilitate SWS Program	RFS				[2122]	[2223]	[2324]	[2425]	[2526]	
	59	Dwellings on Cyril Smith Cct & Bushy Dr	Frazers Cutting	Human Settlement	Residential	Community Education	4	Conduct Community Awareness Program	RFS				[2122]	[2223]	[2324]	[2425]	[2526]	
						Hazard Reduction	46	Monitor Fuel Loads	LGA		RFS		[2122]	[2223]	[2324]	[2425]	[2526]	
						Preparedness	44	Facilitate SWS Program	RFS				[2122]	[2223]	[2324]	[2425]	[2526]	
	60	Glen Innes Correctional Centre	Glen Elgin	Human Settlement	Special Fire Protection	Preparedness	57	Implement Corrections Fire Management Strategy	Other	NSW Correctional Services	RFS		[2122]	[2223]	[2324]	[2425]	[2526]	
	61	Isolated Dwellings Glen Elgin	Glen Elgin	Human Settlement	Residential	Community Education	35	Conduct Community Awareness Program	RFS				[2122]	[2223]	[2324]	[2425]	[2526]	
						Hazard Reduction	61	Implement NPWS Fire Management Strategy	NPWS				[2122]	[2223]	[2324]	[2425]	[2526]	
						Preparedness	51	Undertake Pre-Incident Planning	Private,RFS		RFS		[2122]			[2425]		[2627]
	62	Elouera - UNE Pindari Campus	Inverell LGA	Human Settlement	Other	Property Planning	47	Facilitate Fire Management Strategy	Private		RFS		[2122]		[2324]		[2526]	
	63	Gibraltar World Heritage House	Gwydir Highway, Glen Elgin	Cultural Heritage	Other	Hazard Reduction	16	Implement NPWS Fire Management Strategy	NPWS				[2122]	[2223]	[2324]	[2425]	[2526]	
	64	Cooradool Stock Yards	Mann River, Nymboida NP	Cultural Heritage	Non Indigenous	Hazard Reduction	16	Implement NPWS Fire Management Strategy	NPWS				[2122]	[2223]	[2324]	[2425]	[2526]	
	65	Transgrid Sub-station	Fishers Lane, Inverell	Economic	Infrastructure	Preparedness	50	Maintain APZ	Other	Trans Grid			[2122]	[2223]	[2324]	[2425]	[2526]	
	66	Boonoo Boonoo Depot & Robinsons Cabin	Boonoo Boonoo Falls Rd, Boonoo Boonoo	Economic	Infrastructure	Hazard Reduction	16	Implement NPWS Fire Management Strategy	NPWS				[2122]	[2223]	[2324]	[2425]	[2526]	
							63	Maintain APZ	NPWS				[2122]	[2223]	[2324]	[2425]	[2526]	
	67	Bolivia Shearing Shed	New England Highway, Bolivia	Cultural Heritage	Non Indigenous	Hazard Reduction	16	Implement NPWS Fire Management Strategy	NPWS				[2122]	[2223]	[2324]	[2425]	[2526]	
	68	Fatmans Hut & 4 Bulls Hut	Washpool National Park	Cultural Heritage	Non Indigenous	Hazard Reduction	16	Implement NPWS Fire Management Strategy	NPWS				[2122]	[2223]	[2324]	[2425]	[2526]	

Appendix 3 Treatment Register

Priority (Risk Rating)	Asset ID	Asset Name	Asset Location	Class	Subclass	Strategy	Treatment ID	Action Description	Responsible Agencies	Other RA	Support Agencies	Other SA	2122	2223	2324	2425	2526	2627
	69	Merrigall Stock Yards	Maryland National Park	Cultural Heritage	Non Indigenous	Hazard Reduction	16	Implement NPWS Fire Management Strategy	NPWS				[2122]	[2223]	[2324]	[2425]	[2526]	
	70	Head Gate House & Shed (Tick Gates)	Koreela National Park	Economic	Infrastructure	Hazard Reduction	16	Implement NPWS Fire Management Strategy	NPWS				[2122]	[2223]	[2324]	[2425]	[2526]	
	71	Mulligans Camp Ground	Mulligans Drive, Glen Elgin	Economic	Tourist and Recreation	Hazard Reduction	16	Implement NPWS Fire Management Strategy	NPWS				[2122]	[2223]	[2324]	[2425]	[2526]	
	72	Ashford Caves	Ashford	Environmental	Locally Important	Hazard Reduction	16	Implement NPWS Fire Management Strategy	NPWS				[2122]	[2223]	[2324]	[2425]	[2526]	
	73	Jubullum Aboriginal Village	Tabulam	Human Settlement	Residential	Hazard Reduction	41 54	Monitor Fuel Loads Create and Maintain SFAZ	CL,Private CL,Private		RFS RFS		[2122]	[2223]	[2324]	[2425]	[2526]	
	74	Evacuation Route Emmaville Road	Emmaville Road Emmaville	Human Settlement	Other	Hazard Reduction	14	Undertake Vegetation Management on road reserve	LGA				[2122]	[2223]	[2324]	[2425]	[2526]	
	75	Evacuation Route Wellington Vale Road	Wellington Vale Road Emmaville	Human Settlement	Other	Hazard Reduction	14	Undertake Vegetation Management on road reserve	LGA				[2122]	[2223]	[2324]	[2425]	[2526]	
	76	FC NSW Plantation	Northern Tablelands	Economic	Commercial Forests	Hazard Reduction	25	Implement FCNSW Plan of Management	FCNSW				[2122]	[2223]	[2324]	[2425]	[2526]	
2C (Very High)	0	Dwellings on Mt Lindesay Road	Mt Lindesay Road Tenterfield	Human Settlement	Residential	Hazard Reduction	69	Undertake Vegetation Management on road reserve	LGA				[2122]	[2223]	[2324]	[2425]	[2526]	
	77	Jennings Village	Jennings	Human Settlement	Residential	Community Education	24	Conduct Community Awareness Program	RFS		NPWS		[2122]	[2223]	[2324]	[2425]	[2526]	
	78	Graman Village	Graman	Human Settlement	Residential	Hazard Reduction	66	Monitor Fuel Loads and conduct HRs	LGA,Other	Graman Showground Trust	RFS		[2122]	[2223]	[2324]	[2425]	[2526]	
						Property Planning	64	Prepare Bush Fire Survival Plan	RFS				[2122]		[2324]		[2526]	
							65	Implement Village Protection Strategy	CL,LGA,RFS				[2122]	[2223]	[2324]	[2425]	[2526]	
	79	Tingha Communication Towers	Mount Tingha	Economic	Infrastructure	Hazard Reduction	16	Implement NPWS Fire Management Strategy	NPWS				[2122]	[2223]	[2324]	[2425]	[2526]	
						Preparedness	67	Maintain APZ	NPWS				[2122]	[2223]	[2324]	[2425]	[2526]	
	80	Wandera	Wandera	Human Settlement	Residential	Preparedness	68	Implement Village Protection Strategy	CL,Private		RFS		[2122]	[2223]	[2324]	[2425]	[2526]	
3A (High)	0	Dwelling - Jennings	Cnr Ballendean and Duke Streets Jennings	Human Settlement	Residential	Hazard Reduction	81	Maintain APZ	CL				[2122]	[2223]	[2324]	[2425]	[2526]	
		Glen Innes Landfill	Rodgers Road Glen Innes	Human Settlement	Other	Preparedness	56	Create and Maintain APZ	LGA				[2122]	[2223]	[2324]	[2425]	[2526]	
		Isolated Dwelling Wallangra-Ashford Rd	Wallangra-Ashford Rd	Human Settlement	Residential	Community Education	77	Develop Community Fire Action Plan	RFS				[2122]	[2223]	[2324]	[2425]	[2526]	
		Isolated Dwellings Ashford, Emmaville Rd	Ashford, Emmaville Rd	Human Settlement	Residential	Community Education	74	Develop Local Community Fire Action Plan	RFS				[2122]	[2223]	[2324]	[2425]	[2526]	
						Preparedness	76	Prepare Bush Fire Survival Plan	Private,RFS				[2122]		[2324]		[2526]	
		Isolated Dwellings Pindari Dam Rd	Pindari Dam Rd	Human Settlement	Residential	Community Education	75	Develop Local Community Fire Action Plan	RFS				[2122]	[2223]	[2324]	[2425]	[2526]	
						Preparedness	76	Prepare Bush Fire Survival Plan	Private,RFS				[2122]		[2324]		[2526]	
		Isolated Dwellings, Wallangra	Wallangra, Ashford Rd	Human Settlement	Residential	Community Education	35	Conduct Community Awareness Program	RFS				[2122]	[2223]	[2324]	[2425]	[2526]	

Appendix 3 Treatment Register

Priority (Risk Rating)	Asset ID	Asset Name	Asset Location	Class	Subclass	Strategy	Treatment ID	Action Description	Responsible Agencies	Other RA	Support Agencies	Other SA	2122	2223	2324	2425	2526	2627
		Wooden bridges across Glen Innes LGA	Various locations across Glen Innes LGA	Economic	Infrastructure	Preparedness	83	Create and Maintain APZ	LGA				[2122]	[2223]	[2324]	[2425]	[2526]	
		Wooden bridges across Inverell LGA	Various locations across Inverell LGA	Economic	Infrastructure	Preparedness	83	Create and Maintain APZ	LGA				[2122]	[2223]	[2324]	[2425]	[2526]	
		Wooden Bridges across Tenterfield LGA	Various locations across Tenterfield LGA	Economic	Infrastructure	Preparedness	83	Create and Maintain APZ	LGA				[2122]	[2223]	[2324]	[2425]	[2526]	
	81	Omshulom Multiple Occupancy	Off Beardy River Rd, Bonshaw	Human Settlement	Residential	Preparedness	8	Facilitate Pre-incident Planning	Private		RFS		[2122]	[2223]	[2324]	[2425]	[2526]	
	82	Vulnerable Flora	Inverell	Environmental	Vulnerable	Ignition Management	79	Avoid frequent exposure to fire.	NPWS		RFS		[2122]	[2223]	[2324]	[2425]	[2526]	
	83	Vulnerable Flora	Tenterfield	Environmental	Vulnerable	Hazard Reduction	16	Implement NPWS Fire Management Strategy	NPWS				[2122]	[2223]	[2324]	[2425]	[2526]	
	84	Dwellings on Cunninghams Lane	Inverell	Human Settlement	Residential	Community Education	23	Conduct Community Awareness Program	RFS				[2122]	[2223]	[2324]	[2425]	[2526]	
Hazard Reduction						58	Implement NPWS Fire Management Strategy	NPWS			[2122]	[2223]	[2324]	[2425]	[2526]			
	85	Dwellings on Goonooigall Road	Goonooigall	Human Settlement	Residential	Community Education	23	Conduct Community Awareness Program	RFS				[2122]	[2223]	[2324]	[2425]	[2526]	
Hazard Reduction						58	Implement NPWS Fire Management Strategy	NPWS			[2122]	[2223]	[2324]	[2425]	[2526]			
	86	The Gap TV Transmitter Site	The Gap Range, Emmaville	Economic	Infrastructure	Hazard Reduction	16	Implement NPWS Fire Management Strategy	NPWS				[2122]	[2223]	[2324]	[2425]	[2526]	
Preparedness						82	Create and Maintain APZ	CL			[2122]	[2223]	[2324]	[2425]	[2526]			
	87	Mt Hallam Radio Site	Bonshaw	Economic	Infrastructure	Hazard Reduction	45	Maintain APZ	Other	Comms Tower Lessee	RFS		[2122]	[2223]	[2324]	[2425]	[2526]	
	88	Country Energy Radio Repeater Site	Bonshaw	Economic	Infrastructure	Preparedness	50	Maintain APZ	Other	Trans Grid			[2122]	[2223]	[2324]	[2425]	[2526]	
	89	Tarban Creek Railway Bridge	Tenterfield	Cultural Heritage	Other	Hazard Reduction	72	Monitor Fuel Loads and Undertake Hazard Reduction	ARTC		RFS		[2122]	[2223]	[2324]	[2425]	[2526]	
	90	Isolated Dwellings Sandy Flat	Sandy Flat, Tenterfield	Human Settlement	Residential	Community Education	24	Conduct Community Awareness Program	RFS		NPWS		[2122]	[2223]	[2324]	[2425]	[2526]	
Hazard Reduction						71	Monitor Fuel Loads	CL,Private			[2122]	[2223]	[2324]	[2425]	[2526]			
							85	Implement NPWS Fire Management Strategy	NPWS				[2122]	[2223]	[2324]	[2425]	[2526]	
	91	Wallangra Road Sub-Division	Ashford	Human Settlement	Residential	Community Education	35	Conduct Community Awareness Program	RFS				[2122]	[2223]	[2324]	[2425]	[2526]	
Preparedness						70	Facilitate SWS Program	RFS			[2122]			[2425]		[2627]		
	92	Bluff River Railway Bridge	Sandy Flat, Tenterfield	Cultural Heritage	Other	Hazard Reduction	72	Monitor Fuel Loads and Undertake Hazard Reduction	ARTC		RFS		[2122]	[2223]	[2324]	[2425]	[2526]	
	93	Wyangarra Area Camping	Wyangarra	Economic	Tourist and Recreation	Preparedness	87	Maintain Preparedness	Private		RFS		[2122]	[2223]	[2324]	[2425]		
	94	Gilgai School	Gilgai	Human Settlement	Special Fire Protection	Community Education	73	Conduct School Visit	RFS				[2122]		[2324]		[2526]	
Preparedness						34	Implement Community Protection Plan	CL,LGA,NPWS,FRNSW,Private,RFS,DPI,FCNSW			[2122]	[2223]	[2324]	[2425]	[2526]			
	95	Sunhaven Aged Care Facility	Ashford	Human Settlement	Special Fire Protection	Preparedness	8	Facilitate Pre-incident Planning	Private		RFS		[2122]	[2223]	[2324]	[2425]	[2526]	
						80	Create and Maintain APZ	CL,Other	Ashford Common Trust	RFS		[2122]	[2223]	[2324]	[2425]	[2526]		
	96	Ashford Village	Ashford	Human	Residential	Hazard Reduction	41	Monitor Fuel Loads	CL,Private		RFS		[2122]	[2223]	[2324]	[2425]	[2526]	

Appendix 3 Treatment Register

Priority (Risk Rating)	Asset ID	Asset Name	Asset Location	Class	Subclass	Strategy	Treatment ID	Action Description	Responsible Agencies	Other RA	Support Agencies	Other SA	2122	2223	2324	2425	2526	2627
				Settlement		Preparedness	8	Facilitate Pre-incident Planning	Private		RFS		[2122]	[2223]	[2324]	[2425]	[2526]	
	97	Cooradocoral Hut	Mann River, Nymboida NP	Cultural Heritage	Non Indigenous	Hazard Reduction	16	Implement NPWS Fire Management Strategy	NPWS				[2122]	[2223]	[2324]	[2425]	[2526]	
	98	Raspberry Lookout	Gwydir Highway, Glen Elgin	Economic	Tourist and Recreation	Hazard Reduction	16	Implement NPWS Fire Management Strategy	NPWS				[2122]	[2223]	[2324]	[2425]	[2526]	
	99	Boundary Falls Camping & Day Use Area	Gwydir Highway, Glen Elgin	Economic	Tourist and Recreation	Hazard Reduction	16	Implement NPWS Fire Management Strategy	NPWS				[2122]	[2223]	[2324]	[2425]	[2526]	
	100	Tamariki Homestead & Outbuildings	McIntyre Falls Rd, Kiambal NP	Cultural Heritage	Other	Hazard Reduction	16	Implement NPWS Fire Management Strategy	NPWS				[2122]	[2223]	[2324]	[2425]	[2526]	
	101	Lanaki Camping Area	Paddys Flat Rd, Paddys Flat	Economic	Tourist and Recreation	Hazard Reduction	89	Monitor Fuel Loads	Private		RFS		[2122]	[2223]	[2324]	[2425]	[2526]	
	102	Cudgel Tobacco Barns	Bedwell Downs Rd, Denham	Cultural Heritage	Other	Preparedness	76	Monitor Fuel Loads	Private		RFS		[2122]	[2223]	[2324]	[2425]	[2526]	
	103	Stannum Village	Tenterfield	Human Settlement	Residential	Community Education	4	Conduct Community Awareness Program	RFS				[2122]	[2223]	[2324]	[2425]	[2526]	
	104	Beady Waters Woodland	Gwydir Highway, east of Glen Innes	Economic	Tourist and Recreation	Hazard Reduction	41	Monitor Fuel Loads	CL,Private		RFS		[2122]	[2223]	[2324]	[2425]	[2526]	
	105	Tingha Public School	Ruby Street Tingha	Human Settlement	Other	Community Education	1	Deliver targeted Community Engagement program	RFS		LGA,FCNSW		[2122]	[2223]	[2324]	[2425]	[2526]	
	106	Dwellings on McKechnie Road	McKechnie Road Ruby Creek	Human Settlement	Residential	Community Education	1	Deliver targeted Community Engagement program	RFS		LGA,FCNSW		[2122]	[2223]	[2324]	[2425]	[2526]	
						Hazard Reduction	86	Monitor Fuel Loads	Private		RFS		[2122]	[2223]	[2324]	[2425]	[2526]	
						Property Planning	64	Prepare Bush Fire Survival Plan	RFS				[2122]	[2324]	[2526]			
	107	Blue Hills Reservoir	Duval Road	Economic	Infrastructure	Hazard Reduction	84	Monitor Fuel Loads	LGA		FRNSW		[2122]	[2223]	[2324]	[2425]	[2526]	
	108	Glen Innes Water Treatment Plant	Watsons Drive Glen Innes	Economic	Infrastructure	Hazard Reduction	84	Monitor Fuel Loads	LGA		FRNSW		[2122]	[2223]	[2324]	[2425]	[2526]	
3B (High)	109	Tent Hill Village	Wellington Vale Road and Tent Hill Road, Tent Hill	Human Settlement	Residential	Community Education	22	Conduct Community Awareness Program	RFS				[2122]	[2223]	[2324]	[2425]	[2526]	
						Hazard Reduction	94	Develop and Implement Village Protection Strategy.	CL,Private		RFS		[2122]	[2223]	[2324]	[2425]	[2526]	
	110	Vulnerable Flora	Northern Tablelands	Environmental	Vulnerable	Hazard Reduction	16	Implement NPWS Fire Management Strategy	NPWS				[2122]	[2223]	[2324]	[2425]	[2526]	
	111	Endangered Fauna	Tenterfield	Environmental	Endangered	Preparedness	90	Implement Forestcorp's Fire Management Program	FCNSW				[2122]	[2223]	[2324]	[2425]	[2526]	
	112	Endangered Fauna	Northern Tablelands	Environmental	Endangered	Hazard Reduction	16	Implement NPWS Fire Management Strategy	NPWS				[2122]	[2223]	[2324]	[2425]	[2526]	
	113	Endangered Fauna	Northern Tablelands	Environmental	Endangered	Hazard Reduction	16	Implement NPWS Fire Management Strategy	NPWS				[2122]	[2223]	[2324]	[2425]	[2526]	
	114	Vulnerable Flora	Northern Tablelands	Environmental	Vulnerable	Hazard Reduction	16	Implement NPWS Fire Management Strategy	NPWS				[2122]	[2223]	[2324]	[2425]	[2526]	
	115	Endangered Fauna	Northern Tablelands	Environmental	Endangered	Preparedness	91	Implement Forestcorp's Fire management plan	FCNSW				[2122]	[2223]	[2324]	[2425]	[2526]	
	116	Vulnerable Flora	Northern Tablelands	Environmental	Vulnerable	Community Education	92	Conduct targeted community education	NPWS		RFS		[2122]	[2223]	[2324]	[2425]	[2526]	

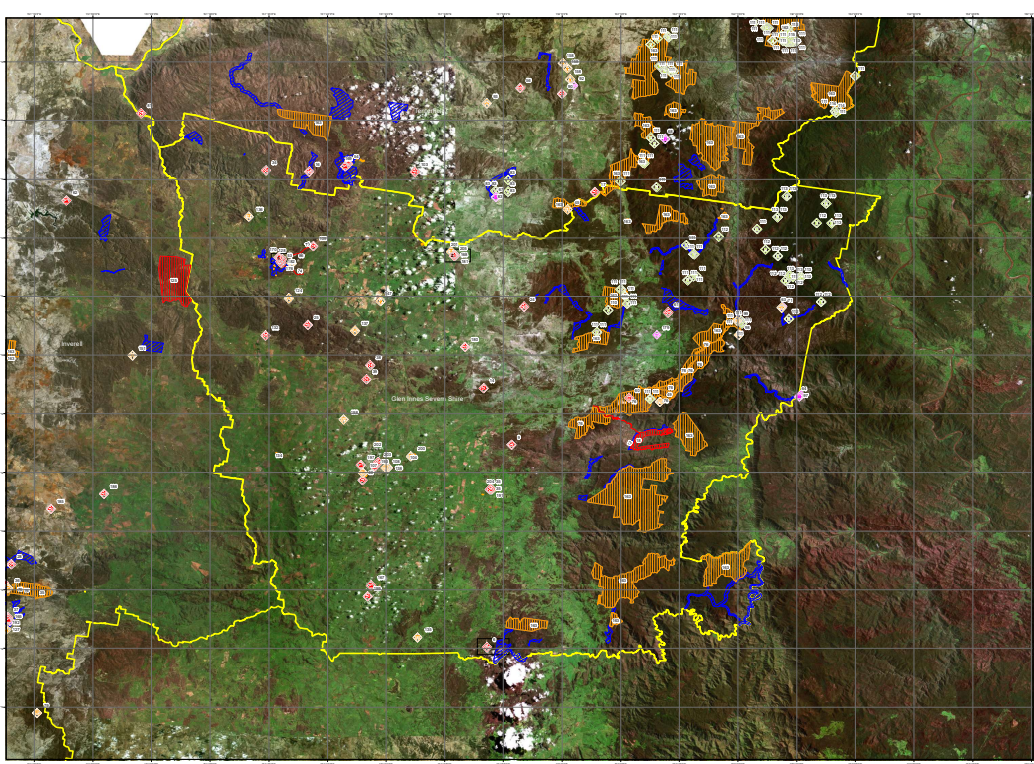
Appendix 3 Treatment Register

Priority (Risk Rating)	Asset ID	Asset Name	Asset Location	Class	Subclass	Strategy	Treatment ID	Action Description	Responsible Agencies	Other RA	Support Agencies	Other SA	2122	2223	2324	2425	2526	2627
	136	Grampian Ridge Repeater	Emmaville	Economic	Infrastructure													
	137	Bullock Mountain Riding Camps	Reddestone	Economic	Tourist and Recreation													
	138	Martins Lookout Repeater	Glen Innes	Economic	Infrastructure													
	139	Teepee Resort	Black Swamp Road, Tenterfield	Economic	Tourist and Recreation													
	140	Vineyards - Deetswood	Leeches Gully Rd	Economic	Agricultural													
	141	Vineyards - Kurrajong Downs	Bruxner Highway	Economic	Agricultural													
	142	Legume Village	Legume	Human Settlement	Residential													
	143	Urbenville Village	Urbenville	Human Settlement	Residential													
	144	Urbenville Hospital	Urbenville	Human Settlement	Special Fire Protection	Preparedness	105	Create and Maintain APZ	CL,LGA		RFS		[2122]	[2223]	[2324]	[2425]	[2526]	
	145	Urbenville Public School	Urbenville	Human Settlement	Special Fire Protection	Community Education	73	Conduct School Visit	RFS				[2122]		[2324]		[2526]	
	146	Jennings Public School	Jennings	Human Settlement	Special Fire Protection	Community Education	73	Conduct School Visit	RFS				[2122]		[2324]		[2526]	
	147	Rangers Valley Feedlot	Rangers Valley	Economic	Agricultural													
	148	Inverell Airport	Gilgai	Economic	Infrastructure													
	149	Gunee Feedlot	Delungra	Economic	Agricultural													
	150	Bald Rock Camping/Picnic Area	Bald Rock NP	Economic	Tourist and Recreation	Hazard Reduction	16	Implement NPWS Fire Management Strategy	NPWS				[2122]	[2223]	[2324]	[2425]	[2526]	
	151	Kings Plains Camping Grounds	Kings Plains National Park	Economic	Tourist and Recreation	Preparedness	106	Implement NPWS Fire Management Strategy	NPWS				[2122]	[2223]	[2324]	[2425]	[2526]	
	152	Lemontree Camping Area	Kwiambal National Park	Economic	Tourist and Recreation	Hazard Reduction	16	Implement NPWS Fire Management Strategy	NPWS				[2122]	[2223]	[2324]	[2425]	[2526]	
	153	Captains Creek Lookout	Tooloom National Park	Economic	Infrastructure	Hazard Reduction	16	Implement NPWS Fire Management Strategy	NPWS				[2122]	[2223]	[2324]	[2425]	[2526]	
	154	Trough Creek Camping Area	Koreela National Park	Economic	Tourist and Recreation	Hazard Reduction	16	Implement NPWS Fire Management Strategy	NPWS				[2122]	[2223]	[2324]	[2425]	[2526]	
	155	McIlveen Park Lookout Reserve	McIlveen Park Rd, Inverell	Economic	Tourist and Recreation													
	156	Bair Athol Reserve	Gwydir Highway, Inverell	Economic	Tourist and Recreation													
	157	Fishing Camp	Bruxner Highway, Sandy Hills	Economic	Tourist and Recreation													
	158	TSR Sandy Flat	New England Highway, Sandy Flat	Economic	Agricultural	Preparedness	103	Monitor Fuel Loads Conduct HR	CL									
	159	Isolated Dwellings Tarban Rd	Tenterfield	Human Settlement	Residential													
	160	Isolated Dwellings Sunnyside Loop Rd	Tenterfield	Human Settlement	Residential													
	161	FNSW Plantation	Northern Tablelands	Economic	Commercial Forests	Hazard Reduction	25	Implement FCNSW Plan of Management	FCNSW				[2122]	[2223]	[2324]	[2425]	[2526]	
	162	Private Plantation	Tenterfield LGA	Economic	Commercial Forests	Preparedness	104	Implement private forest fire management plan	Private		RFS		[2122]	[2223]	[2324]	[2425]	[2526]	
	163	FCNSW Native Forest	Northern Tablelands	Economic	Commercial Forests	Hazard Reduction	25	Implement FCNSW Plan of Management	FCNSW				[2122]	[2223]	[2324]	[2425]	[2526]	
	164	NSP Woodward Park	Cnr Alison Street and Bruxner Highway Drake	Human Settlement	Other	Property Planning	102	Maintain Neighbourhood Safer Place	LGA		RFS		[2122]	[2223]	[2324]	[2425]	[2526]	

Appendix 3 Treatment Register

Priority (Risk Rating)	Asset ID	Asset Name	Asset Location	Class	Subclass	Strategy	Treatment ID	Action Description	Responsible Agencies	Other RA	Support Agencies	Other SA	2122	2223	2324	2425	2526	2627
	165	NSP Tingha Recreation Reserve	Cnr Garnet and Ruby Streets Tingha	Human Settlement	Other	Property Planning	102	Maintain Neighbourhood Safer Place	LGA		RFS		[2122]	[2223]	[2324]	[2425]	[2526]	
	166	NSP Gilgai Public Hall	Hall Street Gilgai	Human Settlement	Other	Property Planning	102	Maintain Neighbourhood Safer Place	LGA		RFS		[2122]	[2223]	[2324]	[2425]	[2526]	
	167	NSP Glencoe Sports Ground	New England Highway Glencoe	Human Settlement	Other	Property Planning	102	Maintain Neighbourhood Safer Place	LGA		RFS		[2122]	[2223]	[2324]	[2425]	[2526]	
	168	NSP Apex Park	Cm Young and Severn Streets Deepwater	Human Settlement	Other	Property Planning	102	Maintain Neighbourhood Safer Place	LGA		RFS		[2122]	[2223]	[2324]	[2425]	[2526]	
	169	NSP Torrington Memorial Hall	Bates Road Torrington	Human Settlement	Other	Property Planning	102	Maintain Neighbourhood Safer Place	LGA		RFS		[2122]	[2223]	[2324]	[2425]	[2526]	
	170	NSP Emmaville Memorial Hall	93 Moore Street Emmaville	Human Settlement	Other	Property Planning	102	Maintain Neighbourhood Safer Place	LGA		RFS		[2122]	[2223]	[2324]	[2425]	[2526]	
	171	NSP Federation Park	Petrie Street Tenterfield	Human Settlement	Other	Property Planning	102	Maintain Neighbourhood Safer Place	LGA		RFS		[2122]	[2223]	[2324]	[2425]	[2526]	
NA (Low)	0	Deepwater Village	Deepwater	Human Settlement	Residential													
		Glen Innes Township	Glen Innes	Human Settlement	Residential													
		Red Range Village	Red Range	Human Settlement	Residential													
	172	Northern Foreshores Copeton Dam	Copeton Dam	Economic	Tourist and Recreation	Property Planning	110	Implement Fire Management Plan	LGA		RFS		[2122]	[2223]	[2324]	[2425]	[2526]	
	173	Acacia Plateau Repeater	Legume	Economic	Infrastructure													
	174	Uambi Repeater	Old Bundarra Road, Gilgai	Economic	Infrastructure													
	175	Crooked Creek Rest Area	Drake	Economic	Tourist and Recreation	Preparedness	37	Implement Forest Corps Fire Management Plan	FCNSW				[2122]	[2223]	[2324]	[2425]	[2526]	
	176	Emmaville Hospital	Emmaville	Human Settlement	Special Fire Protection	Property Planning	109	Facilitate Pre Incident Plan	FRNSW,RFS				[2122]	[2223]	[2324]	[2425]	[2526]	
	177	Dwellings on Common Rd & Billarimba Rd	Tenterfield	Human Settlement	Residential													
	178	Liston Village	Liston	Human Settlement	Residential													
	179	Glen Elgin School House	Glen Elgin	Cultural Heritage	Other	Preparedness	107	Create and Maintain AFZ	CL				[2122]	[2223]	[2324]	[2425]	[2526]	
	180	Dundee Village	Dundee	Human Settlement	Residential													
	181	Deepwater Village	Deepwater	Human Settlement	Residential													
	182	Emmaville Public School	Emmaville	Human Settlement	Special Fire Protection	Community Education	73	Conduct School Visit	RFS				[2122]		[2324]		[2526]	
	183	Yetman Village	Yetman	Human Settlement	Residential													
	184	Wallangra Village	Wallangra	Human Settlement	Residential													
	185	Elsmore Village	Elsmore	Human Settlement	Residential													
	186	Bruderhof Community	Inverell LGA	Human Settlement	Residential													
	187	Ashford Public School	Ashford	Human Settlement	Special Fire Protection	Community Education	73	Conduct School Visit	RFS				[2122]		[2324]		[2526]	
	188	Delungra Village	Delungra	Human Settlement	Residential													
	189	Gum Flat Village	Gum Flat	Human Settlement	Residential	Community Education	1	Deliver targeted Community Engagement program	RFS		LGA,FCNSW		[2122]	[2223]	[2324]	[2425]	[2526]	

Appendix 4
Maps 1 - 3



Asset/Zone	Asset/Zone	Asset/Zone
1. Treatment Strategy	20. Treatment Strategy	39. Treatment Strategy
2. Asset Protection	21. Asset Protection	40. Asset Protection
3. Fuel Reduction	22. Fuel Reduction	41. Fuel Reduction
4. Fire Management	23. Fire Management	42. Fire Management
5. Fire Management	24. Fire Management	43. Fire Management
6. Fire Management	25. Fire Management	44. Fire Management
7. Fire Management	26. Fire Management	45. Fire Management
8. Fire Management	27. Fire Management	46. Fire Management
9. Fire Management	28. Fire Management	47. Fire Management
10. Fire Management	29. Fire Management	48. Fire Management
11. Fire Management	30. Fire Management	49. Fire Management
12. Fire Management	31. Fire Management	50. Fire Management
13. Fire Management	32. Fire Management	51. Fire Management
14. Fire Management	33. Fire Management	52. Fire Management
15. Fire Management	34. Fire Management	53. Fire Management
16. Fire Management	35. Fire Management	54. Fire Management
17. Fire Management	36. Fire Management	55. Fire Management
18. Fire Management	37. Fire Management	56. Fire Management
19. Fire Management	38. Fire Management	57. Fire Management

Asset/Zone	Asset/Zone	Asset/Zone
60. Treatment Strategy	79. Treatment Strategy	98. Treatment Strategy
61. Asset Protection	80. Asset Protection	99. Asset Protection
62. Fuel Reduction	81. Fuel Reduction	100. Fuel Reduction
63. Fire Management	82. Fire Management	
64. Fire Management	83. Fire Management	
65. Fire Management	84. Fire Management	
66. Fire Management	85. Fire Management	
67. Fire Management	86. Fire Management	
68. Fire Management	87. Fire Management	
69. Fire Management	88. Fire Management	
70. Fire Management	89. Fire Management	
71. Fire Management	90. Fire Management	
72. Fire Management	91. Fire Management	
73. Fire Management	92. Fire Management	
74. Fire Management	93. Fire Management	
75. Fire Management	94. Fire Management	
76. Fire Management	95. Fire Management	
77. Fire Management	96. Fire Management	
78. Fire Management	97. Fire Management	

Asset	Asset	Asset	Asset	Asset	Asset
1. Treatment Strategy	2. Asset Protection	3. Fuel Reduction	4. Fire Management	5. Fire Management	6. Fire Management
7. Fire Management	8. Fire Management	9. Fire Management	10. Fire Management	11. Fire Management	12. Fire Management
13. Fire Management	14. Fire Management	15. Fire Management	16. Fire Management	17. Fire Management	18. Fire Management
19. Fire Management	20. Fire Management	21. Fire Management	22. Fire Management	23. Fire Management	24. Fire Management
25. Fire Management	26. Fire Management	27. Fire Management	28. Fire Management	29. Fire Management	30. Fire Management
31. Fire Management	32. Fire Management	33. Fire Management	34. Fire Management	35. Fire Management	36. Fire Management
37. Fire Management	38. Fire Management	39. Fire Management	40. Fire Management	41. Fire Management	42. Fire Management
43. Fire Management	44. Fire Management	45. Fire Management	46. Fire Management	47. Fire Management	48. Fire Management
49. Fire Management	50. Fire Management	51. Fire Management	52. Fire Management	53. Fire Management	54. Fire Management
55. Fire Management	56. Fire Management	57. Fire Management	58. Fire Management	59. Fire Management	60. Fire Management
61. Fire Management	62. Fire Management	63. Fire Management	64. Fire Management	65. Fire Management	66. Fire Management
67. Fire Management	68. Fire Management	69. Fire Management	70. Fire Management	71. Fire Management	72. Fire Management
73. Fire Management	74. Fire Management	75. Fire Management	76. Fire Management	77. Fire Management	78. Fire Management
79. Fire Management	80. Fire Management	81. Fire Management	82. Fire Management	83. Fire Management	84. Fire Management
85. Fire Management	86. Fire Management	87. Fire Management	88. Fire Management	89. Fire Management	90. Fire Management
91. Fire Management	92. Fire Management	93. Fire Management	94. Fire Management	95. Fire Management	96. Fire Management
97. Fire Management	98. Fire Management	99. Fire Management	100. Fire Management		

Northern Tablelands BFMC Bush Fire Risk Management Plan 2021

Glen Innes Severn Shire - Map Display Area

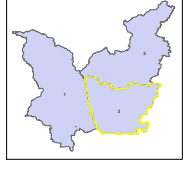
Map 3 of 3

This Bush Fire Risk Management Plan (BFRMP) has been prepared by the Northern Tablelands Bush Fire Management Committee (NTBFMC) pursuant to section 4 of the Bush Fire Act 2009.

The aim of this BFRMP is to reduce the adverse impact of bush fires on life, property and the environment.

The objectives of this BFRMP are to:

- protect the health, safety and wellbeing of the community from damage to life, property and the environment;
- protect the community's livelihoods, assets and identity of bush fires while minimising environmental and economic impacts;
- ensure the community's vulnerability to bush fires by improving its preparedness and response to bush fires;
- ensure the community's vulnerability to bush fires by ensuring the safety and the effectiveness of its bush fire management plan.



This map forms part of the BFRMP. The map is intended to be used in conjunction with the Northern Tablelands BFMC and its associated documents. The map is not intended to be used as a substitute for the BFRMP or any other document. The map is not intended to be used as a substitute for the BFRMP or any other document.



Map 1: Overview

Map 2: Detailed

Map 3: Detailed

Asset	Asset	Asset	Asset
1. Treatment Strategy	2. Asset Protection	3. Fuel Reduction	4. Fire Management
5. Fire Management	6. Fire Management	7. Fire Management	8. Fire Management
9. Fire Management	10. Fire Management	11. Fire Management	12. Fire Management
13. Fire Management	14. Fire Management	15. Fire Management	16. Fire Management
17. Fire Management	18. Fire Management	19. Fire Management	20. Fire Management
21. Fire Management	22. Fire Management	23. Fire Management	24. Fire Management
25. Fire Management	26. Fire Management	27. Fire Management	28. Fire Management
29. Fire Management	30. Fire Management	31. Fire Management	32. Fire Management
33. Fire Management	34. Fire Management	35. Fire Management	36. Fire Management
37. Fire Management	38. Fire Management	39. Fire Management	40. Fire Management
41. Fire Management	42. Fire Management	43. Fire Management	44. Fire Management
45. Fire Management	46. Fire Management	47. Fire Management	48. Fire Management
49. Fire Management	50. Fire Management	51. Fire Management	52. Fire Management
53. Fire Management	54. Fire Management	55. Fire Management	56. Fire Management
57. Fire Management	58. Fire Management	59. Fire Management	60. Fire Management
61. Fire Management	62. Fire Management	63. Fire Management	64. Fire Management
65. Fire Management	66. Fire Management	67. Fire Management	68. Fire Management
69. Fire Management	70. Fire Management	71. Fire Management	72. Fire Management
73. Fire Management	74. Fire Management	75. Fire Management	76. Fire Management
77. Fire Management	78. Fire Management	79. Fire Management	80. Fire Management
81. Fire Management	82. Fire Management	83. Fire Management	84. Fire Management
85. Fire Management	86. Fire Management	87. Fire Management	88. Fire Management
89. Fire Management	90. Fire Management	91. Fire Management	92. Fire Management
93. Fire Management	94. Fire Management	95. Fire Management	96. Fire Management
97. Fire Management	98. Fire Management	99. Fire Management	100. Fire Management